

STATE LEGISLATIVE AGENDA



2014 LEGISLATIVE AGENDA

INTRODUCTION

This document represents the Board's state legislative program for the 2014 Session. While these priorities are intended to guide the County's advocacy efforts in Tallahassee, the list is not exhaustive and issues may arise or evolve that will require Board attention.

The most critical issues are not ranked in order of priority. Commissioners, staff and contract lobbyists will pursue all of the legislative policies approved by the Board and place appropriate priority on the issues given the opportunities that arise during the legislative process. As usual, items of emphasis will include maintaining the County's home rule authority and opposing cost shifts or unfunded mandates.

The state legislative session will begin on March 4, 2014, and is scheduled to conclude on May 2nd.

CONTENTS

SUMMARY OF LEGISLATIVE PRIORITIES

SUPPORT AND TRACKING ISSUES

BACKUP MATERIALS

LEE COUNTY BOARD OF COUNTY COMMISSIONERS



JOHN MANNING – DISTRICT 1



CECIL L PENDERGRASS – DISTRICT 2



LARRY KIKER -- DISTRICT 3



BRIAN HAMMAN -- DISTRICT 4



FRANK MANN -- DISTRICT 5

2014 STATE LEGISLATIVE AGENDA

SUMMARY OF PROPOSED LEGISLATIVE PRIORITIES

The Lee County Board of County Commissioners advocates for the preservation of local home rule and opposes any legislation, policies or regulations that would impose unfunded responsibilities upon the County.

1. **Fertilizer – OPPOSE** efforts to preempt local regulation of the sale or use of fertilizers. The County's fertilizer ordinance was crafted to deal with water quality issues by taking into account specific concerns relating to local geology and hydrology.
2. **Bert Harris Act – SUPPORT** an exemption for local government adoption of Federal Emergency Management Agency Flood Zone Maps. To date, the County has received nineteen notices of claim for inverse condemnation under the Bert J. Harris Act (alleging nearly \$44 million in damages) related to the County's adoption of Federal Flood Insurance Rate Maps. Adoption of these maps is required by the federal government for participation in the National Flood Insurance Program.
3. **Bob Janes Triage Center – SUPPORT** funding a \$250,000 grant to serve an estimated 500 adults with shelter based services. These services enhance public safety and reduce criminal justice expenditures.
4. **Department of Juvenile Justice Secure Detention – SUPPORT** maintaining DJJ's revised billing methodology that is based on recent judicial decisions (County saves nearly \$2.5 million in FY 14).

LOCAL PROJECT FUNDING REQUESTS

- a) **Alico Road Phase 2 Forcemain – \$761,250** (local match of \$761,250)
It is anticipated that this project will contribute to the creation of up to 3,000 permanent jobs and will eliminate the need for at least 3 sanitary sewer package plants.
- b) **Palmona Park Water Quality Improvements – \$200,000** (local match of \$500,000)
Retrofit a degraded 1960's stormwater drainage system in North Fort Myers to include legacy pollutant removal and construction of a vegetative swale to improve water quality.
- c) **Nalle Grade Stormwater Park – \$100,000** (local match of \$200,000)
Design, permitting and construction of a facility in North Fort Myers to provide water quality benefits, flood protection, wildlife habitat and recreational opportunities.
- d) **Daniels Preserve Restoration – \$100,000** (local match of \$100,000)
Proposed project will re-route excess flows from the County Line Drainage District, through Daniels Preserve to Spanish Creek restoring historic flows, rehydrating wetlands and improving water quality.

SUPPORT AND TRACKING ISSUES

ADMINISTRATION –

OPPOSE potential reforms and/or modifications to the Communications Services Tax that are adverse to counties;

OPPOSE potential modifications (including repeal) of local authority to levy the Local Business Tax that are adverse to counties;

MONITOR legislation relating to Tax on Sales, Use and Other Transactions, to include sales of tangible personal property ordered through the Internet; and

OPPOSE potential reforms to the Florida Retirement System that are adverse to counties.

ECONOMIC DEVELOPMENT

SUPPORT adequately funding Florida's Economic Development TOOL KIT to ensure that Florida's incentive program is globally competitive.

HUMAN SERVICES –

SUPPORT participation in the Medicaid Workgroup and continued evaluation of the county-state Medicaid cost sharing arrangement, taking into consideration the impacts of state efforts designed to control and reduce Medicaid costs, including Medicaid managed care and diagnosis related group reimbursement for hospitals. OPPOSE efforts to further shift state Medicaid costs to counties; and

SUPPORT additional funding opportunities for homeless coalitions.

NATURAL RESOURCES –

OPPOSE legislation preempting local authority to regulate inspection of septic tanks and wells;

SUPPORT additional beach management funding;

Monitor proposed revisions to Chapter 161, Fla. Stats., regarding Beach and Shore preservation;

SUPPORT implementation of Chapter 373, Fla. Stats., Regarding Water Resources (Northern Everglades);

OPPOSE legislation that preempts local government authority to regulate fertilizer application;

MONITOR legislation regarding springs protection (may contain preemption of local fertilizer regulation);

SUPPORT legislation to retain County authority regarding well permitting; and

SUPPORT additional funding to South Florida Water Management District.

PUBLIC SAFETY –

SUPPORT application of the E-911 Fee to prepaid mobile telecommunications;

SUPPORT new legislation to include pre-hospital services in Medicaid reimbursements; and

OPPOSE any efforts to shift inmates with less than a year on their sentence at the time of sentencing to jails instead of prisons.

RISK MANAGEMENT –

OPPOSE legislation that would increase the state fee charged to self-insured counties.

SOLID WASTE –

MONITOR landfill construction and operations regulations;

MONITOR any potential “Bottle Bill” legislation that could have a negative impact on the economic stability of the County’s curbside recycling program; and

Monitor legislation that impacts Solid Waste Flow Control and might affect the financial stability and viability of the County’s solid waste system (for both waste and recycling materials).

SPORTS AUTHORITY –

Monitor legislation regarding Specialty License Plates and sports centers; and

SUPPORT funding opportunities regarding Florida sports.

TRANSIT –

SUPPORT Florida Public Transportation Association’s legislative platform, to include:

Support efforts to maintain funding for the Transportation Disadvantaged program and support the continuation of the Coordinated System within Chapter 427, Florida Statutes;

Support measures that allow all state colleges the option to establish a transportation access fee;

Allowing counties to levy local option motor fuel taxes by a majority, rather than a super majority vote of county commissioners; and

Indexing of Local Option Motor Fuel taxes in a manner similar to the current indexing of the State Motor Fuel Tax.

UTILITIES –

In addition to working with Senator Wilton Simpson regarding revisions to Section 367.081, F.S., Lee County Utilities has an interest in the following legislative items:

Procurement –

SUPPORT the non-publishing of detailed bid estimates by creating an exemption for county and municipality projects in statute; and

SUPPORT establishing an optional (alternative) process for state and local entities to consider cost in the award of professional service agreement pursuant to the Consultants’ Competitive Negotiation Act.

Copper and Other Metal Thefts –

SUPPORT legislation strengthening laws related to copper and other metals thefts and secondary metals recyclers to deter thefts from local governments, businesses and individuals;

SUPPORT legislation increasing the penalties for illegal purchase of scrap metals; and

OPPOSE legislation preempting local scrap metal ordinances from being more restrictive.

Irrigation and Reclaimed Water –

Local governments have invested significant resources toward developing reclaimed water in order to conserve Florida's water resources; therefore, FAC OPPOSES additional regulations of reclaimed water by water management districts that are outside the scope of the water management district's statutory authority and that provide regulatory hurdles to the development of reclaimed water;

OPPOSE statewide or regional regulations regarding irrigation that result in unfunded mandates to local government or preemption of local government ordinances; and

SUPPORT legislation that specifically authorizes local governments to promulgate irrigation ordinances, consistent with s. 373.228(4), F.S.

Onsite Wastewater Treatment –

OPPOSE legislation that would prevent counties from requiring mandatory hookup to central sewer. Local governments are best equipped to determine how to properly balance environmental concerns with the cost of providing for wastewater treatment to homeowners and businesses, whether by centralized sewer, advanced treatment units, performance based onsite wastewater systems, or conventional or passive onsite systems; therefore,

OPPOSE legislation that would reduce the local role in determining how to best address wastewater issues locally.

Septage Waste Disposal –

SUPPORT local government authority to regulate the land application of septage waste within its jurisdictional boundaries, given the differences in technical, environmental and economic feasibilities present within each jurisdiction.

Water Supply/Funding –

SUPPORT legislation that enhances regional and local financial capacity to address water resource and water supply development;

SUPPORT legislation that enhances the flexibility of expenditures from the state, regional, and local funding sources to address water resource and water supply development;

SUPPORT the enhanced funding of the Water Protection and Sustainability Program within the DEP for alternative water supply development, water quality development, and comprehensive water supply infrastructure needs;

SUPPORT greater commitment of state resources for regional systems of statewide importance, such as rivers, springs and the Everglades;

SUPPORT renewed funding for alternative water supply projects, conservation, and the TMDL program; and

SUPPORT maintaining the current limitations on the use of Florida Forever funding for water resource development.

Water Pricing and Privatization –

OPPOSE legislation that shifts water supply allocation from a publicly regulated process to a market driven process;

OPPOSE legislation that undermines the fundamental principles of Florida water law which establishes a right of use, not a right of ownership;

SUPPORT legislation that preserves the fundamental principles of water law which requires a showing that a proposed use of water is a reasonable-beneficial use, will not interfere with an existing legal use of water, and is consistent with the public interest to protect water and related natural resources;

SUPPORT legislation consistent with the fundamental principles of Florida water law, that will allow water management districts the flexibility to work with local governments to establish procedures to manage reallocation efforts when regions have reached or surpassed their sustainable amount of water usage; and

SUPPORT legislation that removes the current sales tax exemption on bottled water.

Water Transfer –

OPPOSE legislation that undermines existing Florida water law which states that a county in which water is withdrawn shall not be deprived directly or indirectly of the prior right to reasonable and beneficial use of water which is required to supply the needs of that county's natural systems or any of the inhabitants or property owners therein;

SUPPORT continuation of state law on local sources first because counties have the prior right to reasonable and beneficial use of water; and

SUPPORT legislation that requires the consent of affected counties or water supply authorities to regional and inter-regional projects.

Water Quality –

SUPPORT science-based numeric nutrient criteria for Florida’s waters. FAC encourages the United States Environmental Protection Agency (EPA) and DEP to ensure that any rulemaking to promulgate new nutrient criteria:

Is based upon or correlated with cause and effect relationships between nutrients and biological impairment;

Is economically and technically feasible;

Achieves environmental benefits;

Takes into account existing state water quality and water supply programs; and

Includes meaningful stakeholder participation.

Water Quality, Stormwater Management and Total Maximum Daily Loads (TMDLs) –

SUPPORT the continued or enhanced funding of the Water Protection and Sustainability Program within the DEP for TMDL and stormwater programs;

OPPOSE legislation that would preempt county authority to regulate water quality or would restrict counties in implementing TMDLs; and

SUPPORT measures to preserve county authority to address water quality problems or those that provide flexibility to county governments in crafting solutions to water quality problems at the local level.

Working Waterfronts –

SUPPORT legislation that provides additional state and local funding sources and statutory provisions to assist local governments in the following: 1) the acquisition of property or the securing of development rights resulting in the preservation or enhancement of public access to Florida water bodies; 2) the preservation of recreational and commercial working waterfronts; and 3) the construction or maintenance of boating improvement projects.

Water Supply/Governance –

SUPPORT legislation that would enhance local government participation in the water management district planning, permitting and regulatory processes;

OPPOSE the legislative creation of a statewide water commission or “water czar” which redefines the water supply relationship among the state, water management districts, and local governments, as this would add a new layer of government and create additional bureaucracy; and

SUPPORT utilizing the DEP to maximize coordination and cooperation among the water management districts.

Water Supply/Reservations –

SUPPORT the current authority of the DEP and the water management districts to create water reservations for the purpose of protecting natural resources and the public health and safety;

SUPPORT legislation providing counties with input to DEP or the water management districts with respect to water reservations projects, minimum flows and levels, and recovery and prevention strategies;

SUPPORT legislation that encourages and supports “goal-based water conservation initiatives through permit incentives and the use of conservation best management practices developed by the utility industry; and

SUPPORT legislation that recognizes the responsibility and authority of local government utilities to establish rates and rate structures to allow for flexibility in the provision of services and the sustainable funding of operations.

Utilities –

Water conservation measures should allow a utility to choose either a Standard Water Conservation Plan or Goal-Based Water Conservation Plan. Lee County Utilities has a very low per capita use compared to other southwest Florida utilities. Thus the sole option of requiring a Goal-Based plan during the permit renewal process could put the utility into an unobtainable and cost prohibitive goal of water conservation. Seasonal weather and population variations make it difficult to “measure” the effectiveness of water conservation measures. Oppose a Goal-Based Water Conservation Plan and Support the option of either Standard or Goal-Based plan during the permit renewal process.

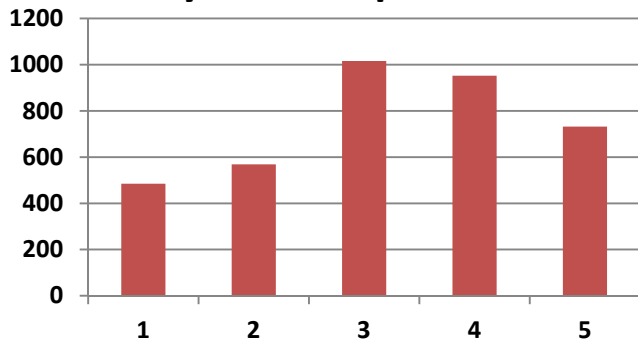
BOB JANES TRIAGE CENTER/LOW DEMAND SHELTER - 2013 SUMMARY

The Bob Janes Triage Center/Low Demand Shelter (Triage Center), located in Lee County Florida, is a multi agency collaboration which is primarily a voluntary pre-arrest diversion program for individuals exhibiting symptoms of a behavioral health disorder(s) and are at risk of arrest for low-level minor offenses or future involvement with the criminal justice system. The program allows law enforcement to divert individuals with behavioral health issues to the Triage Center for shelter, assessments, and linkages to services. In addition, the project serves individuals referred from the hospital system and the Veterans Administration who are high utilizers of acute medical and/or behavioral health services including crisis stabilization and detoxification. Due to behavioral and life style issues these individuals are also at risk of future involvement with the criminal justice system

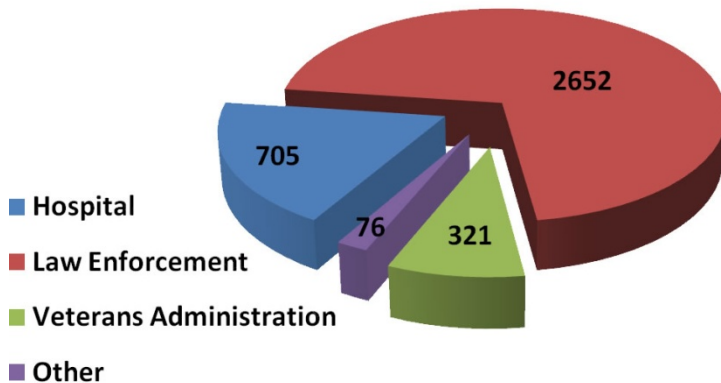
The ultimate goal of the project is to provide a more suitable and less costly alternative to incarceration or the inappropriate utilization of emergency rooms for primary health care needs for homeless individuals; more efficiently utilize existing resources such as residential treatment and supportive housing and allow individuals to seek help immediately when they are motivated to do so by providing a safe place to stay while accessing services. It is a low demand or “wet” shelter, meaning that individuals “under the influence” can be admitted to the facility. There are three avenues for referrals: the majority of clients (70%) are voluntary diverted by local law enforcement officers who encounter them while on patrol; local hospitals can divert individuals who arrive at the emergency department for non-acute care; and The Veterans Administration staff can refer homeless veterans.

The facility opened in 2008 with 22 beds and expanded to 58 beds in 2010. Data presented below is for the five years of operations of 05/01/2008 to 04/30/2013:

Admissions to Triage for five years of operations



Referral Sources



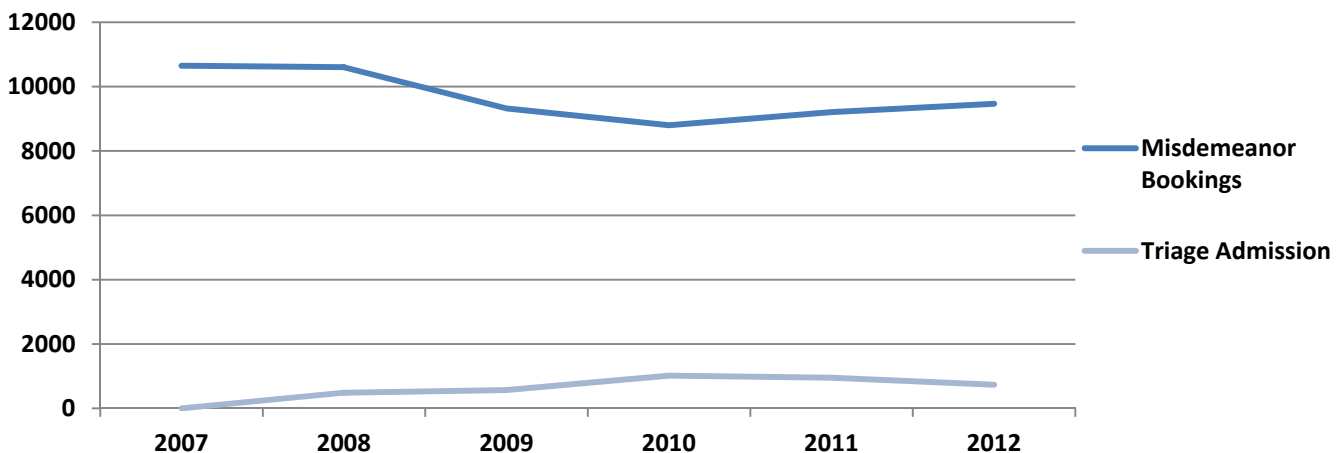
Triage/Low Demand Center's Impact on the Community

- 2,107 unique individuals were served for 3,754 admissions
- A highly vulnerable population was served: 94% unemployed; 95% homeless; 81% have no income; 97% have no insurance; 20% veterans; 38% self-reported having a mental health issue and 35% reported having a substance abuse problem
- Reduces impact on inappropriate utilization of emergency rooms; 19% of clients were referred by Lee Memorial Health System
- Provides access to assessment, shelter, resources, and treatment for people who would have otherwise been left on the streets.
 - 76% of clients are successfully linked with resources aimed at effectively reintegrating the individual into the community
 - 16% of clients are discharged into a substance abuse or psychiatric facility
 - 22% entered a permanent supportive housing facility or permanent housing situation
 - 10% of clients receive or are linked to social security benefits at exit

Triage/Low Demand Center's Impact on the Criminal Justice System:

- Reduces Jail Admission - Diverted 583 specific charges as indicated by law enforcement officers
- 60% of clients have a previous arrest history within Lee County
- 11% reduction in misdemeanor bookings since opening
- Re-arrest rate for clients participating for longer than 3 days is 15% less
- Jail cost avoidance ranges between \$463,540 and \$499,282 over the last five years or \$92,708 to \$99,856 annually
- Public safety is increased as it reduces time spent by law enforcement dealing with clientele, allowing officers a faster turnaround to patrolling the streets.
 - 88% of law enforcement officers' report spending less than 5 minutes at the facility and 96% report spending less than 10 minutes.
- 70% of clients are brought to Triage by law enforcement of which 13% is LCSO
- All admissions were either a direct diversion from an arrest or arrest(s) for low level offenses or were high risk for future incarcerations due to experiencing homelessness and exhibiting behavioral health issues.

Data provided by the Lee County Sheriff's office shows that the number of misdemeanor bookings from 2007 (prior to inception of the Triage Center) to 2012 decreased by 11.3%; conversely the Triage admissions rose during the time periods that the misdemeanor bookings decreased suggesting a correlation between the decrease of misdemeanor bookings and the increase in triage admissions as is illustrated in the chart below.

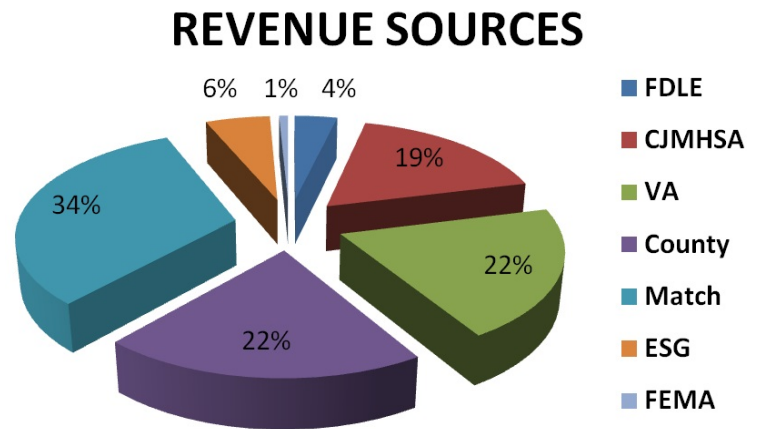


A study of the project completed in 2011 by The Policy Services and Research Data Center (PSRDC), of the University of South Florida, Florida Mental Health Institute concluded that the Triage Center not only diverts individuals away from the criminal justice system, but provides a safe place to stay; comprehensive assessment of needs; and linkages to needed community services, including housing. Those who stay longer at the Triage Center are less likely to be re-arrested, stay longer in the community prior to re-arrest, and have shorter incarceration lengths.

This project found that diverted subjects are about 25% more likely to receive mental health counseling services; spend more time in the community and less time in jail than those who are not diverted, resulting in cost savings. Diverted subjects were no more likely to be arrested than those not diverted, indicating that time in the community was not a trade-off for public safety.

Funding sources have included:

- Edward Byrne {Florida Department of Law Enforcement (FDLE)}
- Criminal Justice, Mental Health Substance Abuse Grant - Department of Children & Families (CJMHSAs)
- Veterans Administration (VA)
- Local Government General Fund (County)
- Emergency Solution Grant (ESG)
- FEMA
- Local Partner Match Contributions (Match)



Alico Road Phase 2 Force Main

Community Budget Issue Request

Supporting Information

Lee County is seeking grant funding to assist in the construction of approximately 9,000 linear feet of 20" sanitary sewer force main along Alico Road to provide service to a portion of the Research and Enterprise Diamond. The Research and Enterprise Diamond is an innovation center anchored by FGCU and Southwest Florida International Airport and includes several private sector industrial, commercial, and research oriented developments. Lee County has designated this area as the Tradeport and University Community in its comprehensive plan to promote industrial, commercial, and research development to diversify the economy of Lee County. This project will bring services to the Research and Enterprise Diamond that will promote and facilitate private investment and environmental sustainability by eliminating the need for multiple on-site wastewater treatment plants.

The proposed project qualifies for funding under section 403.885 F.S. as it is a wastewater management project with the eligible recipient being a County (Lee County). Further, the project will aid in the creation of up to 3,000 permanent jobs in the immediate area of the project while protecting public health and the environment by providing central sanitary sewer service to an area that would otherwise be served by on-site wastewater systems such as sanitary sewer package plants. Sanitary sewer package plants have been viewed as a potential detriment to the environment by the local regional planning council. The Southwest Florida Regional Planning Council Resolution #2007-05, titled "Wastewater Package Plant Resolution, Plants with Less Than 100,000 GPD Capacity", states: "No new package plants should be permitted on the mainland unless there is no available connection to a centralized sewer system". The resolution prohibits the permitting of package plants on barrier islands. The project will reduce the proliferation of septic systems and sanitary sewer package plants in the area.

The project addresses a statewide and regional interest as it will bring services to a significant portion of the Research and Enterprise Diamond, an area targeted by Lee County for economic diversification and job creation. The Research and Enterprise Diamond comprises a geographic area in Lee County that is economically distressed. For over 4 years, the unemployment rate in Lee County has exceeded the national unemployment rate. Compounding the unemployment problem is underemployment. The Cape Coral-Fort Myers MSA is largely dependent on the construction and tourism industries. The latest available data from the American Community Survey indicates a great disparity between the high percentage of well-educated workers and low inventory of quality jobs. At least 2 in 10 workers who have jobs are underemployed, compounded by unemployment.

The entire Research and Enterprise Diamond is anticipated to create over 25,000 jobs with an economic impact of over \$1 billion over a 10 year period. The planned developments will create 4.9 million square feet of industrial, 1.5 million square feet of office, and 1.2 million square feet of retail space and is anticipated to include 560 new hotel rooms. The construction of the Alico Road Phase 2 Force Main will facilitate the development of at least three large scale developments within the Research and Enterprise Diamond. One of the developments is the FGCU Innovation Hub, scheduled to be operational in August 2014 with proposed development to reach 1.2 million square feet of research facilities geared towards renewable energy, wetlands research, bioterrorism, and biotechnology. The three developments within the area of the proposed force main project anticipate creating 3,000 permanent high quality technical jobs.

There is a documented need for the project that is addressed in a regional plan. The Research and Enterprise Diamond is listed as a vital project in the Southwest Florida Regional Planning Council's "Comprehensive Economic Development Strategy Plan 2012-2017". The forcemain project will provide vital facilities to provide for central sanitary sewer service to a portion of the Research and Enterprise Diamond.

The measurable outcome of this project is the creation of up to 3,000 permanent high quality technical jobs and providing central sanitary sewer service to at least three large scale developments that would otherwise utilize package plants for wastewater treatment and disposal.

A sustainable revenue source for operating the proposed facility is available through monthly user fees, charged by LCU, that will be paid by developments connected to the facility. LCU periodically has a rate study performed to ensure users of the system are paying an appropriate use charge to cover the operating expenses of the facility they are utilizing.

Project Tracking #: _____

Community Budget Issue Request

1. Project Title: Alico Road Phase 2 Force Main Date August 15, 2013

2. Member Sponsor(s) Name: _____ District No.(s): _____

3. What Statewide interest does this project address as it relates to Chapter 216.052(1)? Job creation and reduce proliferation of sewer package plants.

4. Requester

Name: Lee County Board of County Commissioners Organization: Lee County Government

5. Recipient

Name: Lee County Utilities Street 1500 Monroe Street

City: Fort Myers Zip Code: 33901

Counties Lee Gov't Entity or Private Organization (Profit/Not for Profit)

6. Contract

Name: Pamela Keyes, P.E., Utilities Director Phone #: 239-533-8899 e-mail: PKeyes@leegov.com

7. Project description: (Include services to be provided): Construction of approximately 9,000 linear feet of sanitary sewer forcemain along Alico Road providing sanitary sewer service to the eastern portion of the Research and Enterprise Diamond, an innovation center anchored by Florida Gulf Coast University and the S.W. Florida International Airport.

8. Is this project related to a federal or state declared disaster? Yes No

8a. If yes, which declared disaster? N/A

8b. If yes, what year? N/A

9. **Measurable Outcome Anticipated:** Creation of up to 3,000 permanent jobs. Elimination of need for at least 3 sanitary sewer package plants.

10. Amount you are requesting from the State for this project this year? Amount Requested:

11. Total cost of the project this year:

12. Is this request being made to fund (check all that apply): Operations Construction

13. What type of match exists for this request? Local Private Federal None

13a. Enter all amounts that apply: Total cash Amount Total In Kind Amount

14. Was this project previously funded by the State? Yes No

14a. If yes, most recent Fiscal Year N/A (eg. 2002-2003) Amount:

15. Is future-year funding likely to be requested? Yes No

15a. If yes, how much?

15b. Purpose for future year funding: Recurring Operations Non-Recurring Construction Other: _____

16. Will this be an annual request? Yes No

17. Was this project included in an Agency Budget Request? Yes No

17a. If yes, name the Agency: U.S. Economic Development Administration

18. Was this project included in the Governor's Recommended Budget? Yes No Unknown

19. Is there documented need for this project? Yes No

19a. If yes, what is the documentation (eg: LRPP, Agency Needs Assessment, etc.) S.W. Florida Regional Planning Council, S.W. Florida Comprehensive Economic Development Strategy 2012-2017

20. Was this project request heard before a publicly-noticed meeting of a body of elected officials (municipal, county or state)? Yes No

20a. If yes, name the Body: Lee County Board of County Commissioners

21. Is this a water project under s. 403.885, F.S.? Yes No

(see http://www.dep.state.fl.us/water/waterprojectfunding/2007/wpf_2007_main.htm for more information including historical funding)

If yes, please complete Page 2

IMPORTANT: ATTACH APPROPRIATE SUPPORTING DOCUMENTATION FOR THIS CBIRS REOEUST

Project Tracking #: _____

Community Budget Issue Request

21a. Is the project eligible under section 403.885(2), F.S. to protect public health or the environment; and implement plans developed pursuant to the Surface Water Improvement and Management Act created in part IV of Chapter 373, F.S., other waste restoration plans required by low, management plans prepared pursuant to s. 403.067, F.S., or other plans adopted by the local government for water quality improvement and water restoration? Yes No

22. Is your project addressed in a state, regional or local plan (such as a SWIM Plan, Comprehensive Plan, Local Master Plan, etc.)?

Yes No

22a. If yes, name the plan and cite the pages on which the project is described.

Page 31 S.W. Florida Regional Planning Council, S.W. Florida
Comprehensive Economic Development Strategy 2012-2017

23. Are you requesting funding for a stormwater, surface water restoration, or other water management project? Yes No

If yes, answer the following:

23a. In which Water management Districts area is your project located? N/A

23b. Have you provided at least a 50% match (that is, one-half the total project cost identified in this request?) Yes No

23c. If yes, identify the amount and source of any match being provided: Amount \$761,250.00 Source: Lee County CIP

23d. Will this project reduce pollutant loadings to a water management district designated "priority" surface water body? Yes No

(see www.dep.state.fl.us/water/waterprojectfunding/WMDprioritywaters.htm for list of priority water bodies.)

23e. If yes, name the water body: N/A

23f. If yes, describe, specifically how it will reduce loadings, identify anticipated load reduction for total suspended solids, total nitrogen, total phosphorus, and other contaminants, and specify the practices that will be used to reduce loadings. N/A

23g. Is the project under construction? Yes No

24. Are you requesting funding for a wastewater project? Yes No

If yes, answer the following:

24a. Does your project qualify for funding from DEP's "Small Community Wastewater Treatment Grant Program" under section 403.1838, F.S.?

Yes No (See www.dep.state.fl.us/water/wff/cwsrf/smalcwgp.htm for information.)

24b. If yes, have you received or applied for funding? Yes No

24c. If yes, provide the DEP Disadvantaged Small Community Grant project number N/A

24d. Have you received or applied for funding for this project from DEP's State Revolving Fund (SRF) program under section 403.1835, F.S.?

Yes No (see www.dep.state.fl.us/water/wff/cwsrf/index/htm for information)

24e. If yes, provide the DEP SRF project number N/A

24f. Is the project under construction? Yes No

24g. Have you provided at least a 25% match (that is, one-quarter the total project cost identified in this request)? Yes No

24h. If yes, identify the amount and source of the match: Amount \$761,250.00 Source: Lee County CIP

25. Are you requesting funding for a drinking water project? Yes No

If yes, answer the following:

25a. Have you received or applied for funding for this project from DEP's State Revolving Fund (SRF) program under section 403.8532, F.S.?

Yes No (See www.dep.state.fl.us/water/wff/desrf/index.htm for information)

25b. If yes, provide the DEP SRF project number: N/A

25c. Is the project under construction? Yes No

25d. Have you provided a match? Yes No

25e. If yes, identify the amount and source of the match: Amount _____ Source: _____

Water Project Application

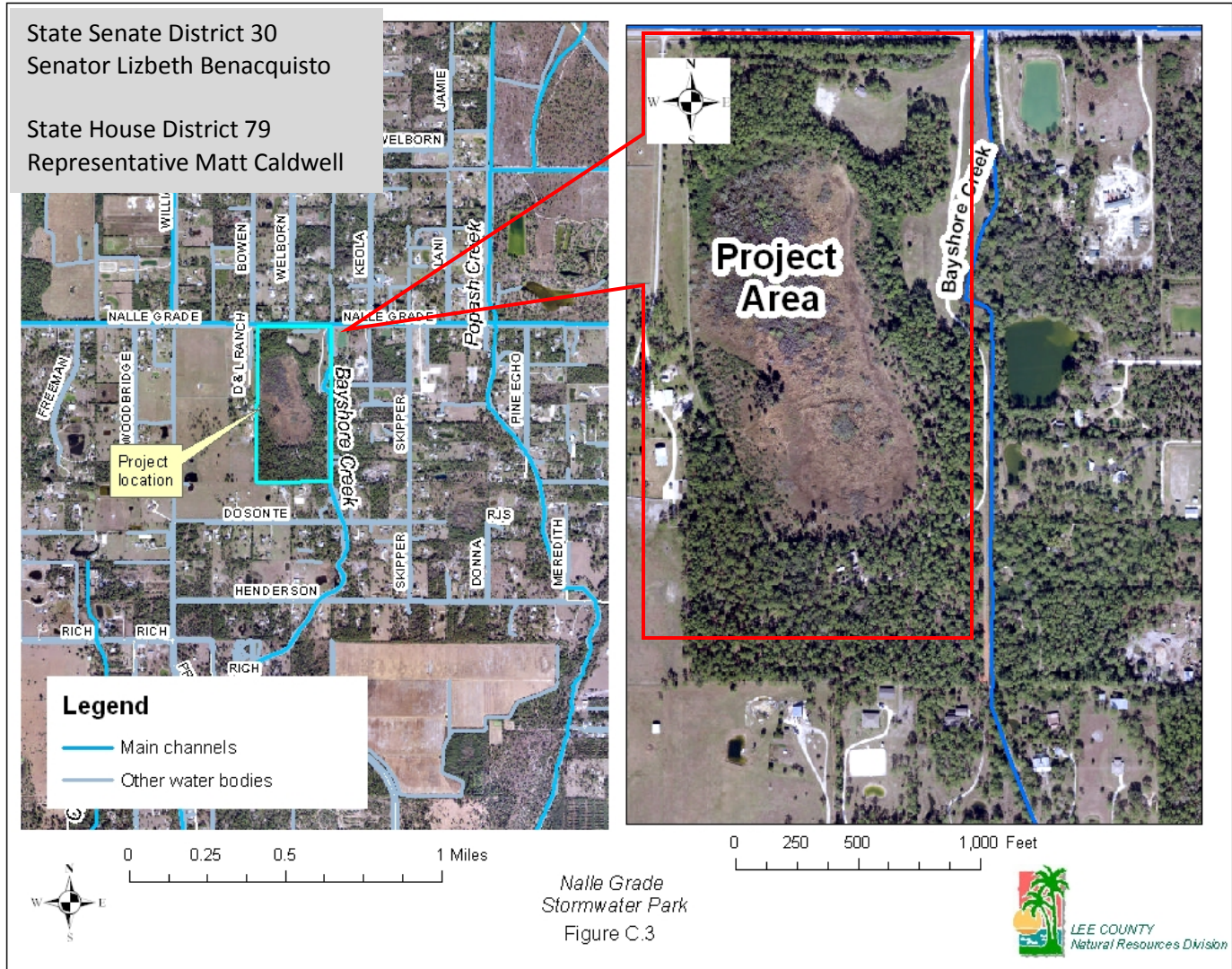
The following general criteria are to guide the Governor in his decision-making process for the funding of water projects should they receive funding in the General Appropriations Act.

Eligible recipients - counties; municipalities; water management districts; and special districts that are statutorily responsible for water quality improvement, stormwater management, wastewater management, water restoration, and other water projects specifically appropriated by the Legislature.

Project Description:	
Project protects public health or the environment.	Yes No
Project implements a plan developed pursuant to the Surface Water Improvement and Management Act created in part IV of chapter 373, F.S., other water restoration plans required by law, management plans prepared pursuant to s. 403.067, F.S., or other plans adopted by local government for water quality improvement and water restoration. If yes, which plan(s)? _____	Yes No
Project has completed all planning, design, permitting and local zoning and land use requirements. If partial, please explain. _____ _____	Yes No Partial
Applicant has demonstrated that they are pursuing funding from other sources, specifically including any funding under the Drinking Water/Wastewater Treatment Facility Construction State Revolving Loan Programs or Small Community Wastewater Treatment Grants, and provide the status of that pursuit. If yes, which program(s) and the status. _____	Yes No
Applicant has provided an equal match to the request for state appropriations. Local matching funds may come from any source, with the exception of a direct state legislative appropriation, regardless of pass-through entity. The matching requirement may be waived for counties with a population of 75,000 or less and municipalities with a population of 25,000 or less, or any county or municipality not included within a metropolitan statistical area. The applicant must certify that the cost of the match is a fiscal hardship based on one of the following: (1) Per capita taxable value is less than the statewide average for the current fiscal year; (2) percentage of assessed property value that is exempt from ad valorem taxation is higher than the statewide average for the current fiscal year; (3) any condition specified in s. 218.503(1), F.S., that results in the county or municipality being in a state of financial emergency; or (4) ad valorem operating millage rate for the current fiscal year is greater than 8 mills. (Attach documentation supporting applicant's pertinent waiver(s).)	Yes No

<p>Applicant has provided a description of the project and includes metrics that will demonstrate the beneficial return on investment to Florida taxpayers. Metrics identify "before and after scenarios" with attached supporting documentation to quantify the anticipated return on investment.</p>	<p>Yes No</p>
<p>Applicant has demonstrated that there is a sustainable revenue source for operating expenses of a facility that was constructed through a state appropriation for water projects. This revenue source should not be attained through an increase in fees or taxes without an approved referendum of the increase by the affected taxpayers. (Attach documentation supporting the operating revenue source.)</p>	<p>Yes No</p>
<p>Applicant has identified sponsor and a majority of the local delegation members approve of the project in writing. (Attach documentation.)</p>	<p>Yes No</p>
<p>Project has received state appropriations in previous years and is in the construction phase. Please state the fiscal year(s) and amount(s). _____</p>	<p>Yes No</p>

Nalle Grade Stormwater Park



The Nalle Grade Stormwater Park will be located at 8350 Nalle Grade Road, North Fort Myers, FL. This project will be designed to provide water quality benefits, enhance flood protection, wild life habitat and recreational opportunities for the community. The Bayshore Creek watershed is roughly 3 square miles and receives drainage from a 12 square mile contributing watershed that originates in Charlotte County. Bayshore Creek drainage interacts with Popash Creek watershed depending on water levels and rainfall.

The watersheds of North Fort Myers are tributaries to the Caloosahatchee River. The Caloosahatchee River is currently under a mandatory Federal Clean Water Act watershed restoration plan adopted by the State of Florida, Department of Environmental Protection in

Nalle Grade Stormwater Park

November 2012. This restoration plan requires the communities along the Caloosahatchee River, west of the Franklin Locks, to reduce nutrient pollution over the next 5 years. The Nalle Grade Stormwater Park is one of the projects required by the watershed restoration plan for nutrient pollution removal.

Lee County Division of Natural Resources is currently working on design and permitting of the Nalle Grade Stormwater Park. This project was one of the recommendations of the North Fort Myers Surface Water Management Plan developed in 2010. The process includes the following:

- **Review & Analyze Existing and New Data –**
 - ✓ Collect topographic, geotechnical and other field data if necessary.
 - ✓ Review existing water quality data to identify pollutants of concern and opportunities to improve water quality.
 - ✓ Review existing basin boundary maps for adequacy and accuracy and analyze previous flood events to identify issues of concern.

- **Develop preliminary conceptual design alternatives and project descriptions.**
 - ✓ Water quality treatment is the main focus of the project.
 - ✓ Design features may include wetland preservation, protection of wildlife, recreation, and water conservation.
 - ✓ Continue to look for opportunities to enhance flood protection.

- **Develop detailed design plans for public presentation.**

- **Complete permits for construction plans and specifications necessary implement project.**

Project description, status updates, contact information, meeting announcements and other details can be found at:

<http://www.leegov.com/gov/dept/NaturalResources/SurfaceWater/Pages/NalleGradeStormwaterPark.aspx>

Project Tracking #: _____

Community Budget Issue Request

1. Project Title: Nalle Grade Stormwater Park Date: July 10, 2013

2. Member Sponsor(s) Name: Lee County Division of Natural Resources District No.(s): House District 79

3. What statewide interest does this project address as it relates to Chapter 216.052(1)? Lee County BOCC is a county government entity responsible for carrying out State water quality improvement mandates under s. 403.067, F.S.

4. Requester:
Name: Roland Ottolini, Director Organization: Lee County Board of County Commissioners

5. Recipient:
Name: Lee County Division of Natural Resources Street: PO Box 398

City: Fort Myers Zip Code: 33901

Counties: Lee County Gov't Entity or Private Organization (Profit/Not for Profit)

6. Contact:
Name: Roland Ottolini Phone #: 239-533-8109 e-mail: ottolire@leegov.com

7. Project Description: (Include services to be provided) This project entails design, permitting and construction of a facility in North Fort Myers to provide water quality benefits, flood protection, wildlife habitat and recreational opportunities.

8. Is this project related to a federal or state declared disaster? Yes No

8a. If yes, which declared disaster? _____

8b. If yes, what year?: _____

9. Measurable Outcome Anticipated : Reduce nutrient pollution discharge into the Caloosahatchee River that has a TMDL.

10. Amount you are requesting from the State for this project this year? Amount Requested:

11. Total cost of project this year:

12. Is this request being made to fund (check all that apply): Operations Construction

13. What type of match exists for this request? Local Private Federal None

13a. Enter all amounts that apply: Total Cash Amount Total In Kind Amount

14. Was this project previously funded by the State? Yes No

14a. If yes, most recent Fiscal Year _____ (eg. 2002-2003) Amount:

15. Is future-year funding likely to be requested? Yes No

15a. If yes, how much?

15b. Purpose for future year funding: Recurring Operations Non-Recurring Construction Other _____

16. Will this be an annual request? Yes No

17. Was this project included in an Agency Budget Request? Yes No

17a. If yes, name the Agency: _____

18. Was this project included in the Governor's Recommended Budget? Yes No Unknown

19. Is there documented need for this project? Yes No

19a. If yes, what is the documentation? (eg: LRPP, Agency Needs Assessment, etc.) North Ft Myers Surface Water Master Plan, Sec.C.9

20. Was this project request heard before a publicly-noticed meeting of a body of elected officials (municipal, county, or state)? Yes No

20a. If yes, name the Body: Lee County Board of County Commissioners

21. Is this a water project under s. 403.885, F.S.? Yes No

(See http://www.dep.state.fl.us/water/waterprojectfunding/2007/wpf_2007_main.htm for more information including historical funding)

If Yes, please complete Page 2

IMPORTANT: ATTACH APPROPRIATE SUPPORTING DOCUMENTATION FOR THIS CBIRS REQUEST

21a. Is the project eligible under section 403.885(2), F. S., to protect public health or the environment; and implement plans developed pursuant to the Surface Water Improvement and Management Act created in part IV of Chapter 373, F.S., other water restoration plans required by law, management plans prepared pursuant to s. 403.067, F.S., or other plans adopted by local government for water quality improvement and water restoration? Yes No

22. Is your project addressed in a state, regional or local plan (such as a SWIM Plan, Comprehensive Plan, Local Master Plan, etc.)?

Yes No

North Ft Myers Surface Water Master Plan, Sec.C.9.58

22a. If yes, name the plan and cite the pages on which the project is described Caloosahatchee Estuary BMAP, P. 65

23. Are you requesting funding for a stormwater, surface water restoration, or other water management project? Yes No

If yes, answer the following:

23a. In which Water Management Districts area is your project located? South Florida Water Management District

23b. Have you provided at least a 50% match (that is, one-half the total project cost identified in this request)? Yes No

23c. If yes, identify the amount and source of any match being provided: Amount \$ 200,000 Source: General Revenue

23d. Will this project reduce pollutant loadings to a water management district designated "priority" surface water body? Yes No

(See www.dep.state.fl.us/water/waterprojectfunding/WMDprioritywaters.htm for list of priority water bodies.)

23e. If yes, name the water body: Caloosahatchee River

23f. If yes, describe, specifically, how it will reduce loadings, identify anticipated load reductions for total suspended solids, total nitrogen, total phosphorus, and other contaminants, and specify the practices that will be used to reduce loadings: The filter marsh will create stormwater attenuation to capture suspended solids and reduce nitrogen, phosphorus and other pollutants by plant uptake.

23g. Is the project under construction? Yes No

24. Are you requesting funding for a wastewater project? Yes No

If yes, answer the following:

24a. Does your project qualify for funding from DEP's "Small Community Wastewater Treatment Grant Program" under section 403.1838, F.S.?

Yes No (See www.dep.state.fl.us/water/wff/cwsrf/smalcwgp.htm for information)

24b. If yes, have you received or applied for funding? Yes No

24c. If yes, provide the DEP Disadvantaged Small Community Grant project number _____

24d. Have you received or applied for funding for this project from DEP's State Revolving Fund (SRF) program under section 403.1835, F.S.?

Yes No (See www.dep.state.fl.us/water/wff/cwsrf/index.htm for information)

24e. If yes, provide the DEP SRF project number _____

24f. Is the project under construction? Yes No

24g. Have you provided at least a 25% match (that is, one-quarter the total project cost identified in this request)? Yes No

24h. If yes, identify the amount and source of the match: Amount \$ _____ Source: _____

25. Are you requesting funding for a drinking water project? Yes No

If yes, answer the following:

25a. Have you received or applied for funding for this project from DEP's State Revolving Fund (SRF) program under section 403.8532, F.S.?

Yes No (See www.dep.state.fl.us/water/wff/dwsrf/index.htm for information)

25b. If yes, provide the DEP SRF project number _____

25c. Is the project under construction? Yes No

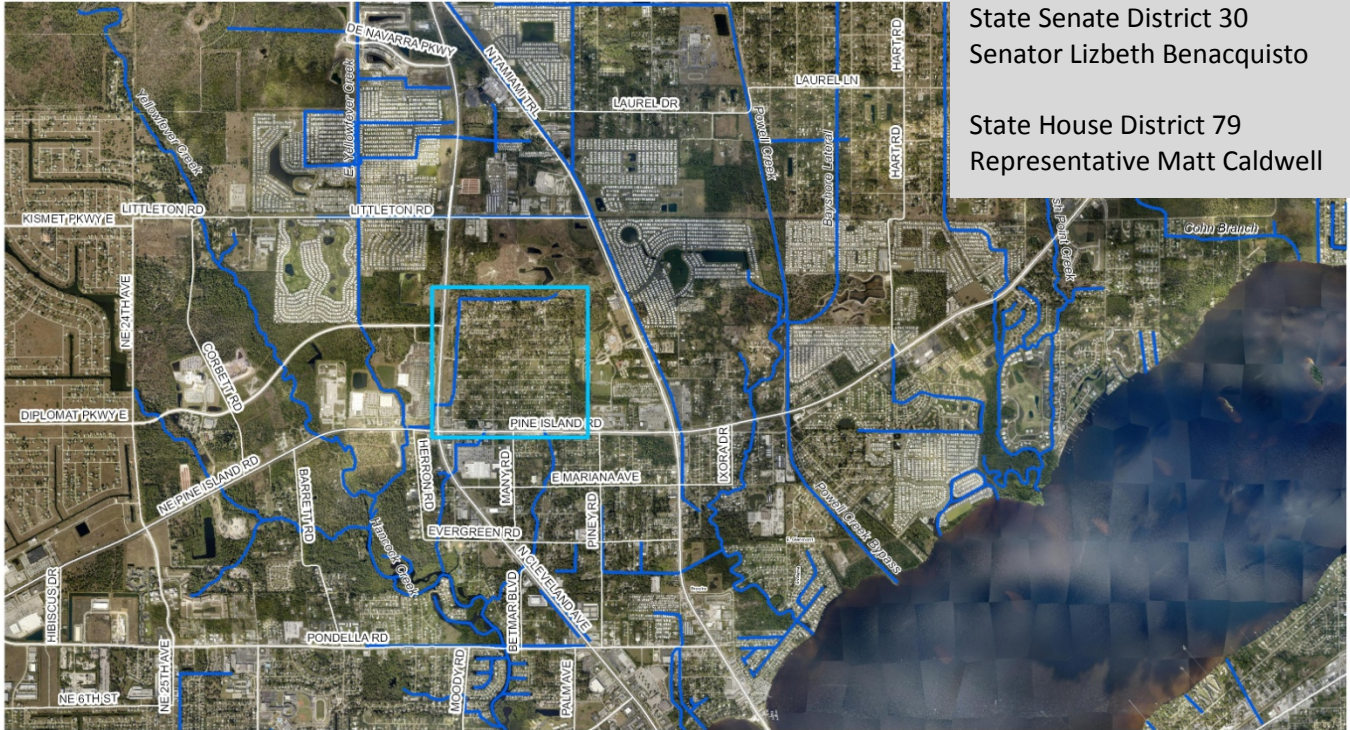
25d. Have you provided a match? Yes No

25e. If yes, identify the amount and source of the match: Amount \$ _____ Source: _____

Palmona Park Water Quality Improvement Project

State Senate District 30
Senator Lizbeth Benacquisto

State House District 79
Representative Matt Caldwell



0 0.25 0.5 1 Miles

Palmona Park



The Palmona Park neighborhood consists of a 200+ acre, older construction subdivision (circa 1960's) located in the northeasterly quadrant of Tamiami Trail (US 41) and Pine Island Road (SR 78) in North Fort Myers, Florida in the Yellow Fever Creek watershed (see location map above). The watershed is primarily comprised of medium to high density residential land use utilizing septic systems for wastewater disposal. Yellow Fever Creek is verified impaired for fecal coliform and is scheduled for TMDL development this year.

The homes in Palmona Park are on septic systems and the neighborhood is considered low-income (50% of households are in an income bracket less than 80% of the county's mean wages) by the Department of Housing and Urban Development (HUD). The watershed may be heavily influenced by aging and failing septic systems in addition to urban stormwater runoff. In addition, there are open lands adjacent to the neighborhood that are used intermittently for livestock grazing as well as park land uses and commercial land uses that has an influence on local water quality.

The Palmona Park Water Quality Improvements (PPWQI) primarily involves the water quality issues associated with the open ditch that lies adjacent to Brown Road and San Jose Street between Ellis Street and Atlantic Avenue. (See Appendix 2, project area map attached.) The canal system functions efficiently as a storm-water corridor, but lacks the water quality treatment. The primary purpose of the project is to reduce fecal coliform, algae and nutrient build up in the canal system which discharges to the Yellow Fever Creek and ultimately outflows into the Caloosahatchee river.

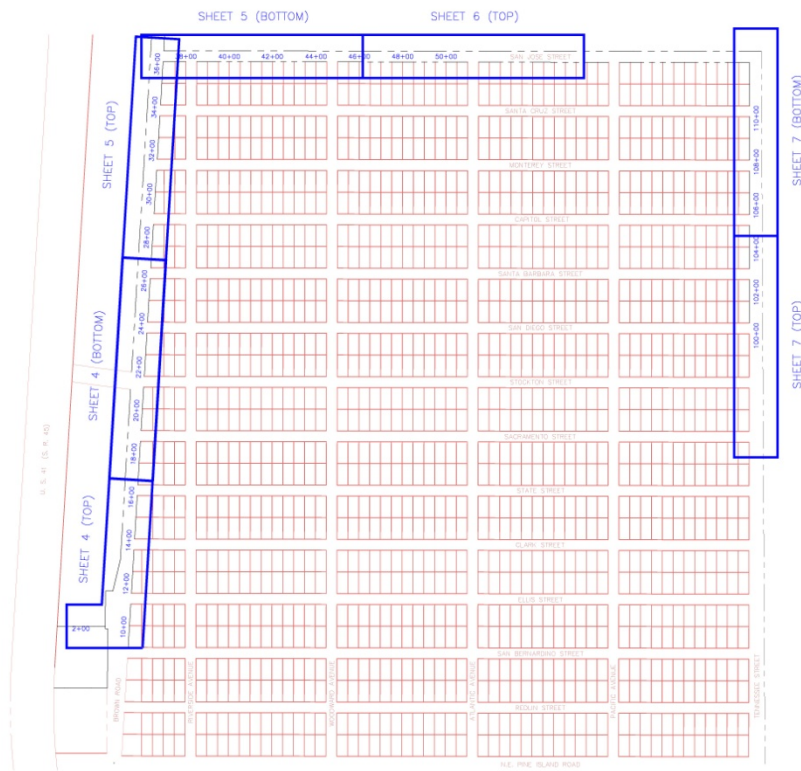
Palmona Park Water Quality Improvement Project

The pollution reduction strategy for this project is removing muck bottom to eliminate legacy nutrient and fecal coliform pollution that has accumulated in sediments over time, and adding vegetation the swale to improve nutrient uptake.

The specific improvements involve the removal of the existing bottom materials (muck) and filling/grading the invert elevation to a uniform slope along Brown Road. In addition, that portion of the Tennessee Avenue right-of-way from just south of San Jose Street to Santa Barbara Street will be excavated into a broad, shallow flow-way. The flow-way will then be vegetated with wetland type plantings for the improved water quality functions. The widened flow-way will allow more time to settle out pollutants in stormwater runoff and increase exposure time to plants and sunlight that also help reduce pollutants in surface water prior to discharging to Yellow Fever Creek.

Appendix 2

SYMBOL LEGEND	
SMAND	SENDES SET WIRE NAIL & DISC STAMPED 1/4" IN 1/2" X 2" X 8" NOTES
I.E.	SENDES INVERT ELEVATION
EL	SENDES ELEVATION
EMFP	SENDES ELLIPTICAL CORRUGATED METAL PIPE
EMCP	SENDES ELLIPTICAL REINFORCED CONCRETE PIPE
RCF	SENDES REINFORCED CONCRETE PIPE
MCS	SENDES METERS END SECTION
CPF	SENDES CORRUGATED PLASTIC PIPE
CCMC	SENDES CONCRETE
---	SENDES TOP OF BANK
---	SENDES TOE OF SLOPE
---	SENDES SWALE SIDE
IT	SENDES INTERIOR
---	SENDES CHAIN LINK FENCE
---	SENDES WOOD FENCE
---	SENDES BARBED WIRE FENCE
---	SENDES WATER METER
---	SENDES FIRE HYDRANT
---	SENDES FORD METER
---	SENDES FORD POLE
---	SENDES LIGHT POLE
---	SENDES GULF ANCHOR
---	SENDES CATCH BASIN
---	SENDES TELEPHONE RISER
---	SENDES BENCHMARK
---	SENDES SPOT ELEVATION



80% DESIGN and PERMITTING PLANS
 THESE DRAWINGS ARE FOR PERMITTING PURPOSES ONLY AND ARE NOT APPROVED FOR CONSTRUCTION

FOR PERMITTING PURPOSES ONLY March 12, 2013 Bradley S. Vance Florida Professional Engineer No. 43746	h2eaux, LLC 26470 Bay Road - Bonita Springs, Florida 34134 (239) 267-5100 h2eauxllc@gmail.com Certificate of Authorization No. 29639	Lee County PUBLIC WORKS DIVISION FLORIDA	LEE COUNTY BOARD OF COUNTY COMMISSIONERS Department of Public Works - Division of Natural Resources 1100 Monroe Street - Fort Myers, Florida 33901	PALMONA PARK WATER QUALITY IMPROVEMENTS PROJECT LAYOUT + LEGEND	SHEET No. 2 OF 7
---	--	---	--	--	-------------------------------

Project Tracking #: _____

Community Budget Issue Request

1. Project Title: Palmona Park Water Quality Improvements Date: July 10, 2013

2. Member Sponsor(s) Name: Lee County Division of Natural Resources District No.(s): House District 79

3. What statewide interest does this project address as it relates to Chapter 216.052(1)? Lee County BOCC is a county government entity responsible for carrying out State water quality improvement mandates under s. 403.067, F.S.

4. Requester:
Name: Roland Ottolini, Director Organization: Lee County Board of County Commissioners

5. Recipient:
Name: Lee County Division of Natural Resources Street: PO Box 398

City: Fort Myers Zip Code: 33901

Counties: Lee County Gov't Entity or Private Organization (Profit/Not for Profit)

6. Contact:
Name: Roland Ottolini Phone #: 239-533-8109 e-mail: ottolire@leegov.com

7. Project Description: (Include services to be provided) This project will retrofit a degraded 1960's stormwater drainage system in N. Ft. Myers to include legacy pollutant removal and constructing a vegetate swale to improve water quality.

8. Is this project related to a federal or state declared disaster? Yes No

8a. If yes, which declared disaster? _____

8b. If yes, what year?: _____

9. Measurable Outcome Anticipated : Reduce nutrient pollution discharge into the Caloosahatchee River that has a TMDL.

10. Amount you are requesting from the State for this project this year? Amount Requested:

11. Total cost of project this year:

12. Is this request being made to fund (check all that apply): Operations Construction

13. What type of match exists for this request? Local Private Federal None

13a. Enter all amounts that apply: Total Cash Amount Total In Kind Amount

14. Was this project previously funded by the State? Yes No

14a. If yes, most recent Fiscal Year _____ (eg. 2002-2003) Amount:

15. Is future-year funding likely to be requested? Yes No

15a. If yes, how much?

15b. Purpose for future year funding: Recurring Operations Non-Recurring Construction Other _____

16. Will this be an annual request? Yes No

17. Was this project included in an Agency Budget Request? Yes No

17a. If yes, name the Agency: _____

18. Was this project included in the Governor's Recommended Budget? Yes No Unknown

19. Is there documented need for this project? Yes No

19a. If yes, what is the documentation? (eg: LRPP, Agency Needs Assessment, etc.) _____

20. Was this project request heard before a publicly-noticed meeting of a body of elected officials (municipal, county, or state)? Yes No

20a. If yes, name the Body: Lee County Board of County Commissioners

21. Is this a water project under s. 403.885, F.S.? Yes No

(See http://www.dep.state.fl.us/water/waterprojectfunding/2007/wpf_2007_main.htm for more information including historical funding)

If Yes, please complete Page 2

IMPORTANT: ATTACH APPROPRIATE SUPPORTING DOCUMENTATION FOR THIS CBIRS REQUEST

21a. Is the project eligible under section 403.885(2), F. S., to protect public health or the environment; and implement plans developed pursuant to the Surface Water Improvement and Management Act created in part IV of Chapter 373, F.S., other water restoration plans required by law, management plans prepared pursuant to s. 403.067, F.S., or other plans adopted by local government for water quality improvement and water restoration? Yes No

22. Is your project addressed in a state, regional or local plan (such as a SWIM Plan, Comprehensive Plan, Local Master Plan, etc.)?

Yes No

22a. If yes, name the plan and cite the pages on which the project is described _____

23. Are you requesting funding for a stormwater, surface water restoration, or other water management project? Yes No

If yes, answer the following:

23a. In which Water Management Districts area is your project located? South Florida Water Management District

23b. Have you provided at least a 50% match (that is, one-half the total project cost identified in this request)? Yes No

23c. If yes, identify the amount and source of any match being provided: Amount \$ 500,000 Source: General Revenue

23d. Will this project reduce pollutant loadings to a water management district designated "priority" surface water body? Yes No

(See www.dep.state.fl.us/water/waterprojectfunding/WMDprioritywaters.htm for list of priority water bodies.)

23e. If yes, name the water body: Caloosahatchee River

23f. If yes, describe, specifically, how it will reduce loadings, identify anticipated load reductions for total suspended solids, total nitrogen, total phosphorus, and other contaminants, and specify the practices that will be used to reduce loadings: The vegetated swale will create stormwater quality improvement by capturing suspended solids, reducing nitrogen, phosphorus and other pollutants by plant uptake.

23g. Is the project under construction? Yes No

24. Are you requesting funding for a wastewater project? Yes No

If yes, answer the following:

24a. Does your project qualify for funding from DEP's "Small Community Wastewater Treatment Grant Program" under section 403.1838, F.S.?

Yes No (See www.dep.state.fl.us/water/wff/cwsrf/smalcwgp.htm for information)

24b. If yes, have you received or applied for funding? Yes No

24c. If yes, provide the DEP Disadvantaged Small Community Grant project number _____

24d. Have you received or applied for funding for this project from DEP's State Revolving Fund (SRF) program under section 403.1835, F.S.?

Yes No (See www.dep.state.fl.us/water/wff/cwsrf/index.htm for information)

24e. If yes, provide the DEP SRF project number _____

24f. Is the project under construction? Yes No

24g. Have you provided at least a 25% match (that is, one-quarter the total project cost identified in this request)? Yes No

24h. If yes, identify the amount and source of the match: Amount \$ _____ Source: _____

25. Are you requesting funding for a drinking water project? Yes No

If yes, answer the following:

25a. Have you received or applied for funding for this project from DEP's State Revolving Fund (SRF) program under section 403.8532, F.S.?

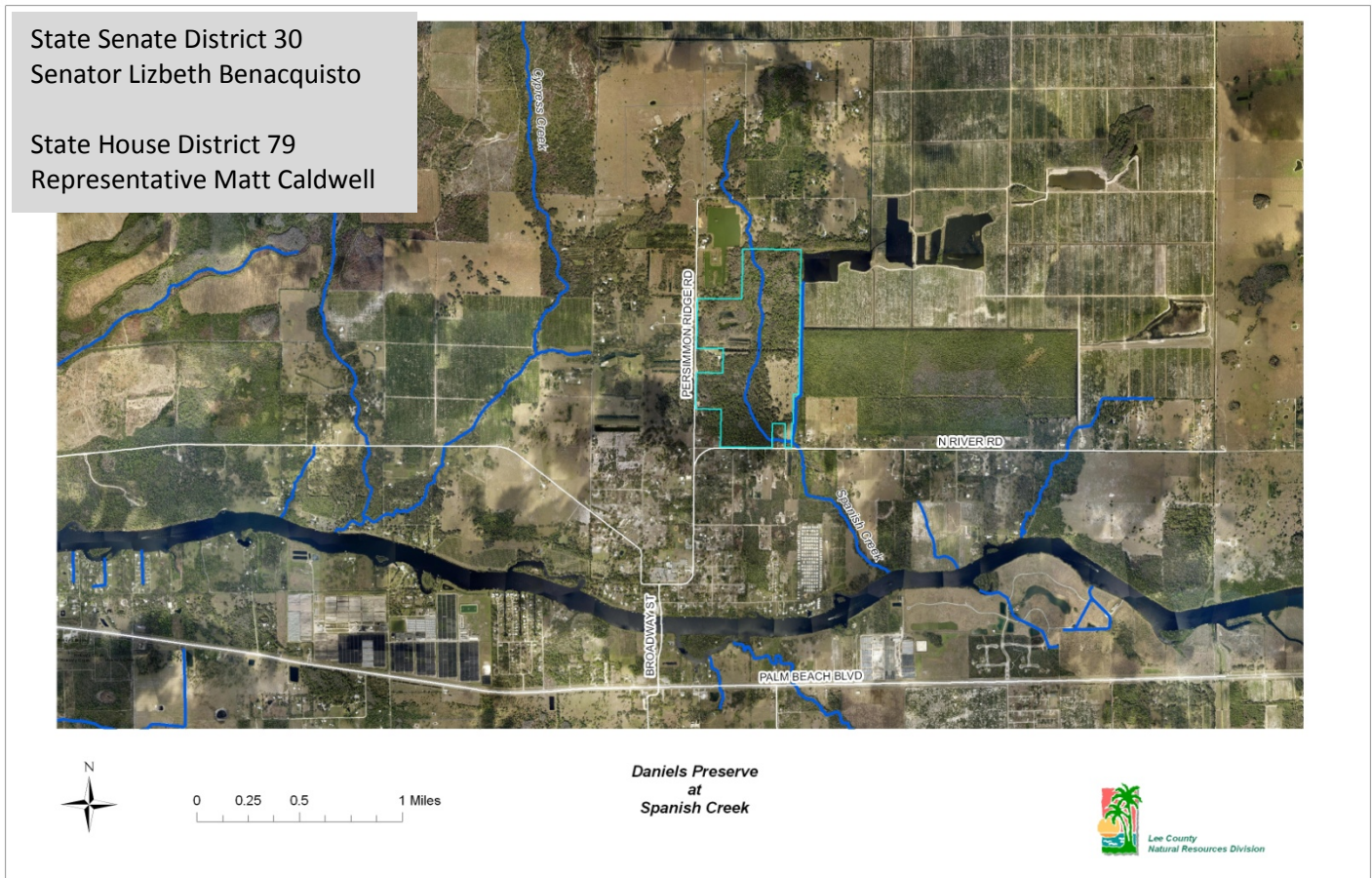
Yes No (See www.dep.state.fl.us/water/wff/dwsrf/index.htm for information)

25b. If yes, provide the DEP SRF project number _____

25c. Is the project under construction? Yes No

25d. Have you provided a match? Yes No

25e. If yes, identify the amount and source of the match: Amount \$ _____ Source: _____



Daniels Preserve at Spanish Creek is a 243 acre parcel purchased through the Conservation 20/20 program in 2005. The preserve is located in Alva, Florida in northeast Lee County, north of County Road 78, approximately 1 mile north of the Caloosahatchee River. This site is deemed instrumental in providing storage of floodwaters and improving water quality flowing into Spanish Creek. Spanish Creek is a tributary to the Caloosahatchee River, which has a TMDL for total nitrogen and is currently subject to a State of Florida Basin Management Action Plan.

The Preserve is surrounded by rural residences to the north, west and south, orange groves to the east located within the County Line Drainage District (CLDD) and a spoil disposal area owned by the South Florida Water Management District (SFWMD). Over the last 50 years, the preserve has been impacted by land use changes that have disrupted historic flow ways, including creation of borrow pits and drainage canals. These alterations have reduced flows in the Spanish Creek and dehydrated wetlands on the Preserve.

The Daniels Preserve Restoration will rehydrate on-site wetlands which currently have reduced hydro-periods and restore flows to the Creek proper by capturing the surface water flows from the CLDD outfall ditch to Spanish Creek within that portion located on the South Florida Water Management

Daniels CPreserve Restoration

District (SFWMD) property adjacent to the easterly boundary of the site. In addition, a potential east-west interconnect will be evaluated that would convey portions of those higher flow rates from the outfall ditch to Spanish Creek in proximity to the middle and southerly portions of the site. Re-routing flows in this way will increase the wetland hydroperiods on Daniels Preserve providing more storage to relieve flooding of adjacent properties in the region, increasing sheet-flow attenuation which will improve water quality by increasing residence time of surface waters in wetlands as well as improving groundwater recharge in the area.

The proposed improvements involve the placement of a pumping facility to extract water from the CLDD outfall ditch. This water will then be conveyed via a subsurface pipe to the northeasterly corner of the property and discharged into an existing depressional area for sheet flow into the wetland areas. As a measure to preclude the premature outflow of surface waters via the channelized portions of Spanish Creek, a limited segment of the channel will be partially filled to reflect the approximate historic conditions. The restoration project components are as follows: (1) CLDD outfall ditch and control structure; (2) pumping facility; (3) conveyance piping and stilling basin; (4) wetland rehydration areas and volumes; and (5) Spanish Creek Channel and Environmental Restoration. The project components are depicted in the map graphic below.



LEE COUNTY B. O. C. C. DEPARTMENT OF PARKS & RECREATION DIVISION OF NATURAL RESOURCES	h2eaux, LLC 25470 Bay Road Bonita Springs, Florida 34134 (239) 297-5100 h2eauxLLC@gmail.com Certificate of Authorization # 29459	FOR INFORMATIONAL PURPOSES ONLY Bradley S. Vance Florida Professional Engineer #43746 Date: MAY 10, 2013	DPS RESTORATION, PHASE I
---	---	---	--------------------------

Project Tracking #: _____

Community Budget Issue Request

1. Project Title: Daniels Preserve Restoration Date: July 10, 2013

2. Member Sponsor(s) Name: Lee County Division of Natural Resources District No.(s): House District 79

3. What statewide interest does this project address as it relates to Chapter 216.052(1)? Lee County BOCC is a county government entity responsible for carrying out State water quality improvement mandates under s. 403.067, F.S.

4. Requester:
Name: Roland Ottolini, Director Organization: Lee County Board of County Commissioners

5. Recipient:
Name: Lee County Division of Natural Resources Street: PO Box 398

City: Fort Myers Zip Code: 33901

Counties: Lee County Gov't Entity or Private Organization (Profit/Not for Profit)

6. Contact:
Name: Roland Ottolini Phone #: 239-533-8109 e-mail: ottolire@leegov.com

7. Project Description: (Include services to be provided) The proposed project will re-route excess flows from the County Line Drainage District, through Daniels Preserve to the Spanish Creek restoring historic flows, rehydrating wetlands and improving water quality.

8. Is this project related to a federal or state declared disaster? Yes No

8a. If yes, which declared disaster? _____

8b. If yes, what year?: _____

9. Measurable Outcome Anticipated : Reduce nutrient pollution discharge into the Caloosahatchee River that has a TMDL.

10. Amount you are requesting from the State for this project this year? Amount Requested:

11. Total cost of project this year:

12. Is this request being made to fund (check all that apply): Operations Construction

13. What type of match exists for this request? Local Private Federal None

13a. Enter all amounts that apply: Total Cash Amount Total In Kind Amount

14. Was this project previously funded by the State? Yes No

14a. If yes, most recent Fiscal Year _____ (eg. 2002-2003) Amount:

15. Is future-year funding likely to be requested? Yes No

15a. If yes, how much?

15b. Purpose for future year funding: Recurring Operations Non-Recurring Construction Other _____

16. Will this be an annual request? Yes No

17. Was this project included in an Agency Budget Request? Yes No

17a. If yes, name the Agency: _____

18. Was this project included in the Governor's Recommended Budget? Yes No Unknown

19. Is there documented need for this project? Yes No

19a. If yes, what is the documentation? (eg: LRPP, Agency Needs Assessment, etc.) Caloosahatchee River Watershed Protection Plan

20. Was this project request heard before a publicly-noticed meeting of a body of elected officials (municipal, county, or state)? Yes No

20a. If yes, name the Body: Lee County Board of County Commissioners

21. Is this a water project under s. 403.885, F.S.? Yes No

(See http://www.dep.state.fl.us/water/waterprojectfunding/2007/wpf_2007_main.htm for more information including historical funding)

If Yes, please complete Page 2

IMPORTANT: ATTACH APPROPRIATE SUPPORTING DOCUMENTATION FOR THIS CBIRS REQUEST

21a. Is the project eligible under section 403.885(2), F. S., to protect public health or the environment; and implement plans developed pursuant to the Surface Water Improvement and Management Act created in part IV of Chapter 373, F.S., other water restoration plans required by law, management plans prepared pursuant to s. 403.067, F.S., or other plans adopted by local government for water quality improvement and water restoration? Yes No

22. Is your project addressed in a state, regional or local plan (such as a SWIM Plan, Comprehensive Plan, Local Master Plan, etc.)?

Yes No

22a. If yes, name the plan and cite the pages on which the project is described Caloosahatchee River Watershed Protection Plan, App.10-2-18

23. Are you requesting funding for a stormwater, surface water restoration, or other water management project? Yes No

If yes, answer the following:

23a. In which Water Management Districts area is your project located? South Florida Water Management District

23b. Have you provided at least a 50% match (that is, one-half the total project cost identified in this request)? Yes No

23c. If yes, identify the amount and source of any match being provided: Amount \$ 100,000 Source: General Revenue

23d. Will this project reduce pollutant loadings to a water management district designated "priority" surface water body? Yes No

(See www.dep.state.fl.us/water/waterprojectfunding/WMDprioritywaters.htm for list of priority water bodies.)

23e. If yes, name the water body: Caloosahatchee River

23f. If yes, describe, specifically, how it will reduce loadings, identify anticipated load reductions for total suspended solids, total nitrogen, total phosphorus, and other contaminants, and specify the practices that will be used to reduce loadings: Restoring historic flows through wetlands attenuate suspended solids, reduce nitrogen, phosphorus and other pollutants by plant uptake improving water quality.

23g. Is the project under construction? Yes No

24. Are you requesting funding for a wastewater project? Yes No

If yes, answer the following:

24a. Does your project qualify for funding from DEP's "Small Community Wastewater Treatment Grant Program" under section 403.1838, F.S.?

Yes No (See www.dep.state.fl.us/water/wff/cwsrf/smalcwgp.htm for information)

24b. If yes, have you received or applied for funding? Yes No

24c. If yes, provide the DEP Disadvantaged Small Community Grant project number _____

24d. Have you received or applied for funding for this project from DEP's State Revolving Fund (SRF) program under section 403.1835, F.S.?

Yes No (See www.dep.state.fl.us/water/wff/cwsrf/index.htm for information)

24e. If yes, provide the DEP SRF project number _____

24f. Is the project under construction? Yes No

24g. Have you provided at least a 25% match (that is, one-quarter the total project cost identified in this request)? Yes No

24h. If yes, identify the amount and source of the match: Amount \$ _____ Source: _____

25. Are you requesting funding for a drinking water project? Yes No

If yes, answer the following:

25a. Have you received or applied for funding for this project from DEP's State Revolving Fund (SRF) program under section 403.8532, F.S.?

Yes No (See www.dep.state.fl.us/water/wff/dwsrf/index.htm for information)

25b. If yes, provide the DEP SRF project number _____

25c. Is the project under construction? Yes No

25d. Have you provided a match? Yes No

25e. If yes, identify the amount and source of the match: Amount \$ _____ Source: _____