

Evaluation
and
Appraisal Report
2004



What is an Evaluation and Appraisal Report?

- An assessment of progress
- Identifies changes
 - Successes and failures
 - Conditions that effect the community
 - State and Growth Management policies

2004 Evaluation and Appraisal Report

- Due in February 2004
- Different approach than in past

**Key Planning Issues vs.
Policy by Policy evaluation**

PUBLIC PARTICIPATION



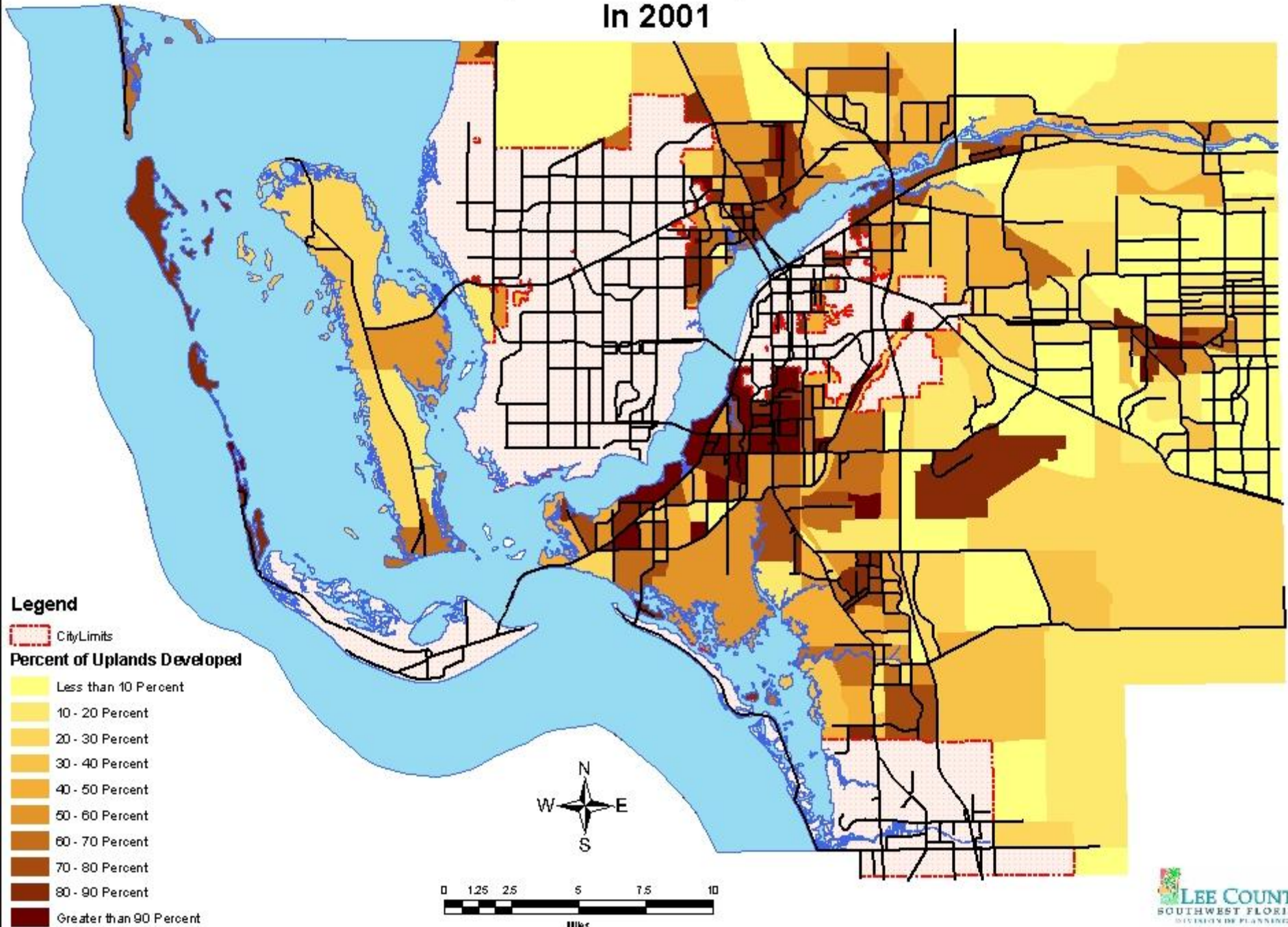
- PUBLICLY ADVERTISED WORKSHOPS
- QUESTIONNAIRES TO WORKSHOP PARTICIPANTS
- INFO POSTED ON PLANNING DIVISION WEB PAGE AND IN DCD NEWSLETTER

* Photo from 4/9/03 North Fort Myers Neighbor

WHAT WE ASKED CITIZENS

- What issues do you believe are most important?
- Does the Lee Plan address those issues?
- What changes could better direct the County's growth?

Percent of Uplands Developed or Preserved In 2001



Major Issues in SW Florida

As perceived by the Department of Community Affairs

- Level of Service on Regional Roadways
- Growth Pressures
- Hurricane Evacuation
- Coastal High Hazard Areas
- Natural Resource Systems
- Platted Areas
- Water Supply and Land Use
- Land Use and School Facilities

What Can Your Agency Contribute?

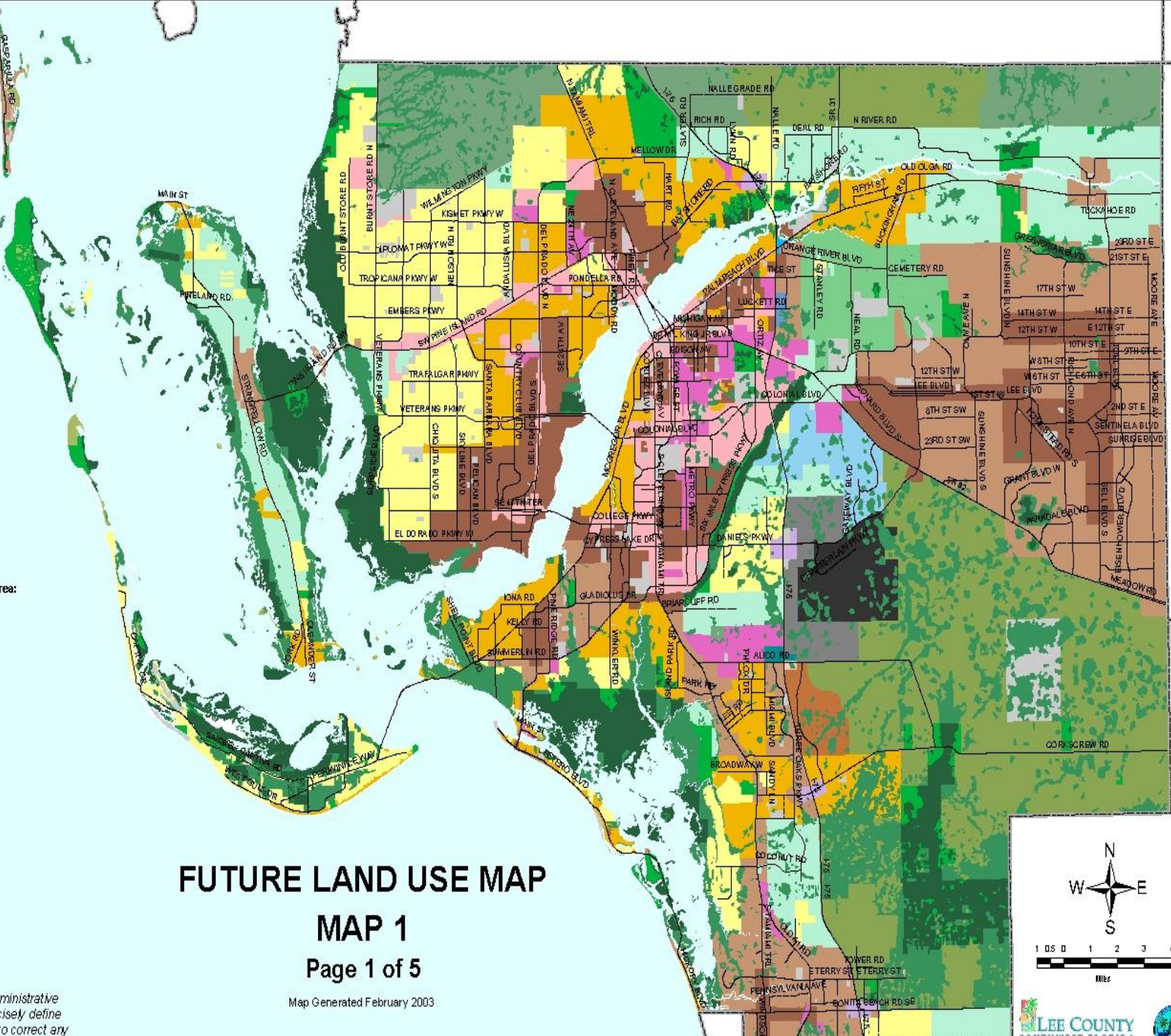
- Tell us what you believe are the major development issues facing Lee County.
- Let us know whether you believe the Lee Plan adequately addresses these issues.
- Provide data and direction to help Planning address the issues that are of concern to your agency.

This map is a representation of the future land use plan as adopted by the Board of County Commissioners on September 17, 2003.

Development	Area Code	Acres
Intensive Development	1-1	1,000
Central Urban	1-2	2,000
Urban Community	1-3	3,000
Suburban	1-4	4,000
Outlying Suburban	1-5	5,000
Industrial Development	1-6	6,000
Public Facilities	1-7	7,000
University Community	1-8	8,000
Conservation Lands - Uplands	2-1	10,000
Density Reduction/Groundwater Resource	2-2	12,000
Outer Island	2-3	14,000
Open Lands	2-4	16,000
Rural Community Preserve	2-5	18,000
Rural	2-6	20,000
Conservation Lands - Wetlands	3-1	22,000
Wetlands	3-2	24,000

The map is a representation of the future land use plan as adopted by the Board of County Commissioners on September 17, 2003.

- Future Urban Areas:**
- Intensive Development
 - Central Urban
 - Urban Community
 - Suburban
 - Outlying Suburban
 - Industrial Development
 - Public Facilities
 - University Community
- Southwest Florida International Airport Area:**
- Airport
 - Airport Commerce
- Interstate Highway Interchange Areas:**
- Industrial Interchange
 - General Interchange
 - General Commercial Interchange
 - Industrial Commercial Interchange
 - University Village Interchange
- New Community:**
- New Community
- Non-Urban Areas:**
- Conservation Lands - Uplands
 - Density Reduction/Groundwater Resource
 - Outer Island
 - Open Lands
 - Rural Community Preserve
 - Rural
- Wetlands:**
- Conservation Lands - Wetlands
 - Wetlands



FUTURE LAND USE MAP

MAP 1

Page 1 of 5

Map Generated February 2003

Chapter XIII of this plan contains an administrative process, including a field check, to precisely define the boundaries of a wetland area, and to correct any such boundaries that are based on clear factual error.

Lee County
Southwest Florida
Division of Planning