

EXHIBIT "A" DANIELS PARKWAY DESIGNATED ACCESS POINTS

ADOPTED OCTOBER 4, 1989 PER RESOLUTION *89-10-11
 AMENDED APRIL 5, 1993 PER RESOLUTION *Z-92-078
 AMENDED SEPTEMBER 15, 1993 PER RESOLUTION *Z-93-045
 AMENDED DECEMBER 2, 1997 PER RESOLUTION *97-12-04
 AMENDED MARCH 24, 1998 PER RESOLUTION *95-03-07
 AMENDED AUGUST 17, 1999 PER RESOLUTION *99-03-23
 AMENDED JANUARY 23, 2001 PER RESOLUTION *01-01-28
 AMENDED APRIL 6, 2004 PER RESOLUTION *04-04-05
 AMENDED NOVEMBER 14, 2006 PER RESOLUTION *06-11-28
 AMENDED AUGUST 19, 2005 PER RESOLUTION *08-08-57
 AMENDED APRIL 3, 2016 PER RESOLUTION *16-04-08
 AMENDED MAY 4, 2021 PER RESOLUTION *21-05-06
 AMENDED AUGUST 3, 2021 PER RESOLUTION *21-08-04
 AMENDED FEBRUARY 4, 2025 PER RESOLUTION *25-02-04



Department of Transportation
Lee County
 Southwest Florida

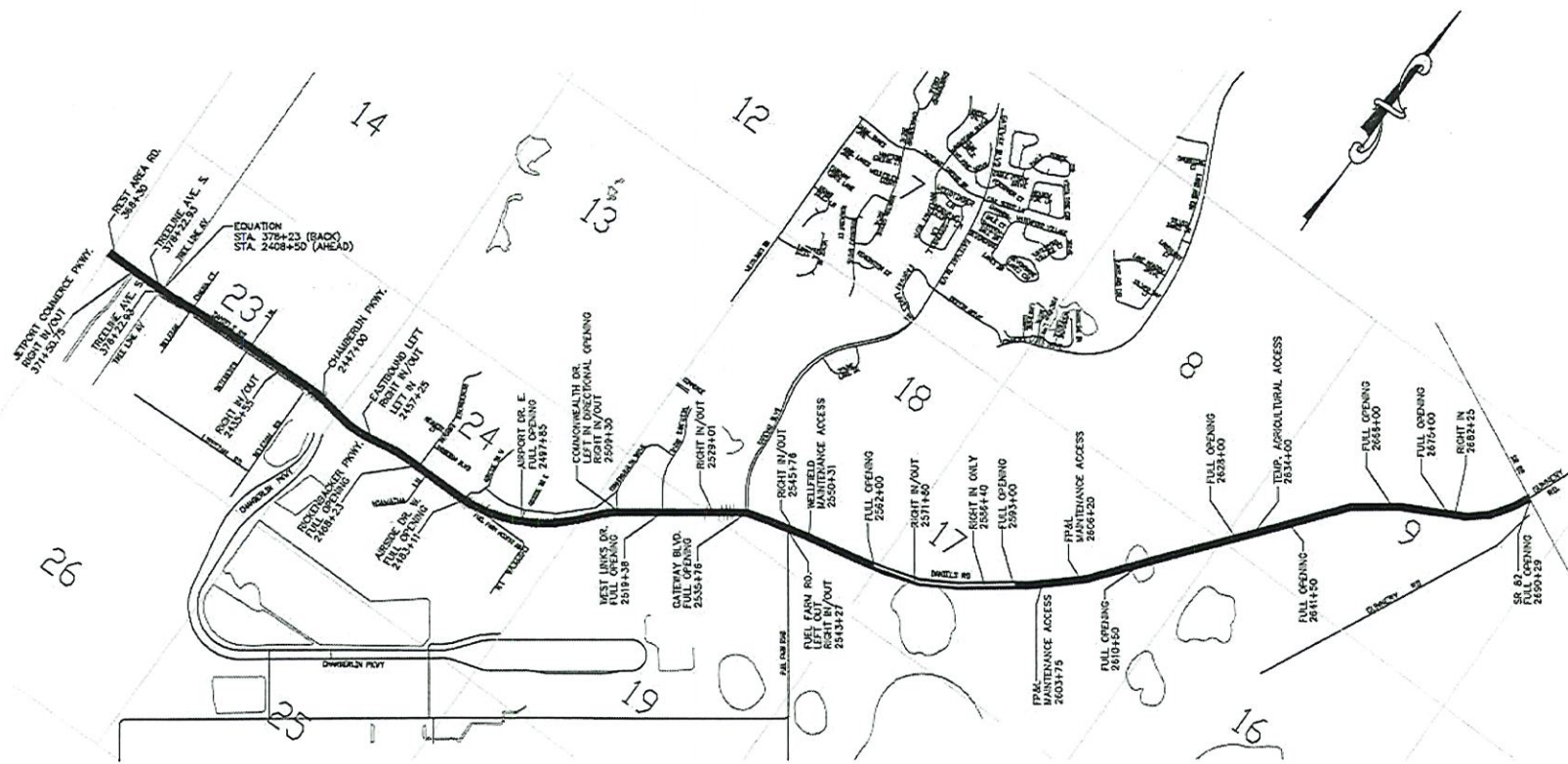


EXHIBIT "A" DANIELS PARKWAY DESIGNATED ACCESS POINTS

- ADOPTED OCTOBER 4, 1989 PER RESOLUTION *89-10-11
- AMENDED APRIL 5, 1993 PER RESOLUTION *Z-92-073
- AMENDED SEPTEMBER 15, 1993 PER RESOLUTION *Z-93-045
- AMENDED DECEMBER 2, 1997 PER RESOLUTION *97-12-04
- AMENDED MARCH 24, 1998 PER RESOLUTION *98-03-07
- AMENDED AUGUST 17, 1999 PER RESOLUTION *99-08-23
- AMENDED JANUARY 23, 2001 PER RESOLUTION *01-01-28
- AMENDED APRIL 6, 2004 PER RESOLUTION *04-04-05
- AMENDED NOVEMBER 14, 2006 PER RESOLUTION *06-11-28
- AMENDED AUGUST 19, 2008 PER RESOLUTION *08-08-57
- AMENDED APRIL 5, 2016 PER RESOLUTION *16-04-08
- AMENDED MAY 4, 2021 PER RESOLUTION *21-05-06
- AMENDED AUGUST 3, 2021 PER RESOLUTION *21-08-04
- AMENDED FEBRUARY 4, 2025 PER RESOLUTION *25-02-01



Department of Transportation
Lee County
Southwest Florida