

**Lee County Board Of County Commissioners
Agenda Item Summary**

Blue Sheet No. 20040018

1. REQUESTED MOTION:

ACTION REQUESTED: Approve award of Project # EX040179, the purchase of one new Altec Model AN755MH aerial device and chassis for DOT from Altec Industries, Inc. at the prices given in the Federal General Services Administration Contract #GS-30F-1028G. Total cost: \$108,901.

WHY ACTION IS NECESSARY: As this expenditure will exceed \$50,000, Board approval is required.

WHAT ACTION ACCOMPLISHES: Provides DOT/Traffic Division with an additional bucket truck to be utilized throughout the County for the maintenance and new construction of traffic signals.

2. DEPARTMENTAL CATEGORY:

COMMISSION DISTRICT #

C9A

3. MEETING DATE:

01-27-2004

4. AGENDA:

- CONSENT
- ADMINISTRATIVE
- APPEALS
- PUBLIC
- WALK ON
- TIME REQUIRED:

5. REQUIREMENT/PURPOSE:

(Specify)

- STATUTE
- ORDINANCE
- ADMIN. *AC-4-1*
- CODE
- OTHER

6. REQUESTOR OF INFORMATION:

- A. COMMISSIONER
- B. DEPARTMENT *Transportation*
- C. DIVISION

BY: Scott Gilbertson, P.E., Director

BACKGROUND: On January 6, 2004, the Division of Purchasing received a request from DOT and the Division of Fleet Management to purchase one new Altec Model AN755MH aerial device and chassis at the prices given in Federal GSA Contract #GS-30F-1028G.

Funding is available: PD5410417500.506430

Please see attachments:

- (1) Department's Request for Purchase
- (2) Vendor's Quotation
- (3) GSA Contract #GS-30F-1028G

8. MANAGEMENT RECOMMENDATIONS:

9. RECOMMENDED APPROVAL:

A	B	C	D	E	F				G
Department Director	Purchasing or Contracts	Human Resources	Other	County Attorney	Budget Services				County Manager
<i>Mrawles</i> <i>1/12/04</i>	<i>Janet Sheehan</i> <i>1-9-04</i>			<i>KRZ</i> <i>1/13/04</i>	<i>Cep/m 1/14/03</i>				
					OA	OM	Risk	GC	
					<i>RK 1/14</i>	<i>1/14</i>	<i>1/14</i>	<i>1/14</i>	<i>PW for</i> <i>DDS</i> <i>1-14-04</i>

10. COMMISSION ACTION:

- APPROVED
- DENIED
- DEFERRED
- OTHER

Rec. by CoAtty
 Date: *1/13/04*
 Time: *1:30 pm*
 Forwarded To:
Co. Admin
1/13/04

RECEIVED BY
 COUNTY ADMIN: *RK*
1/13/04
2:40 PM SGT
 COUNTY ADMIN
 FORWARDED TO: *PL*
1-14-04
NOVA



ATTACHMENT #1

**DIVISION OF
FLEET MANAGEMENT**

To: Janet Sheehan, Purchasing Director
From: Marilyn L. Rawlings, Fleet Manager *MR*
Date: 12/31/2003
Re: Altec Bucket Truck Model AN755MH

Please prepare a Blue Sheet for the purchase of one Altec Bucket Truck Model AN755MH, for the Department of Transportation, Traffic Division.

ACTION REQUESTED:

Approve the GSA (contract #GS-30F-1028G) purchase of one (1) Altec Bucket Truck Model AN755MH for the Department of Transportation, Traffic Division from Altec Industries, Inc. in the amount of \$108,901.00

WHY ACTION IS NECESSARY:

Board approval is required, as this expenditure will exceed \$50,000.

WHAT ACTION ACCOMPLISHES:

This purchase will provide the Department of Transportation, Traffic Division with an additional bucket truck to be utilized throughout of all Lee County for the maintenance and new construction of traffic signals.

Funds for this purchase are available from account string #PD5410417500.506430.

04 JAN - 6 AM 7:34

MATERIAL REQUEST FORM

Non-Surcharge

GSA CONTRACT # GS-01F-10280

BOARD DATE
DATE OF ORDER

R.P.O. #

449418

P.O. #

VENDOR: Altec Industries, Inc.
1720 Vanderbilt Road
Birmingham, AL 38234

VENDOR #: 100337

ORDER CONFIRMED BY: Bud Welch

PHONE # 633-1801

DELIVERY: 180 days

FAX # 561-686-6972-Bud / 205-458-3801-Factory

REPLACES ASSET # New
ASSET #
ASSET #

DEPT # T-SIGNALS - DOT Signals
DEPT #
DEPT #

REGISTRATION TITLE AND TAXES BEING PAID FOR BY Lee County

ACCOUNT STAMP: PD5410417500.506430

FLEET MANAGEMENT SPEC #	QTY	UNIT PRICE
03-183		
This purchase is for a new bucket truck off of the GSA contract. The new truck is for the department of DOT - Signals and is a new purchase, not a replacement.		
Altec model AN755MH, articulating aerial device installed over rear axle, built in accordance with ALTEC'S standard specifications and to include all standard features.	1	\$ 107,676.00
Dealer installed Options.		
INTR - Outrigger boom interlock.	1	\$ 488.00
TBE - Electric trailer brake controller. Controls trailer with electric brakes, wired to 7-way plug next to pintle hook.	1	\$ 193.00
TTP1 - Trailer towing package. Standard T-100A pintle hook with two eyebolts installed at rear. Does not include tractor package.	1	\$ 684.00
Three sets of keys at no additional cost.		
1-year or 12,000 mile warranty.		
The vehicle will be licensed for the road.		
Subtotal for all options:	=	\$ 108,901.00
TOTAL AMOUNT OF PURCHASE ORDER:	=	\$ 108,901.00

APPROVE BY: Danny Brashear
Operations Manager

BY: Marilyn Rawlings
Fleet Manager

DATE: 12/17/03

DATE: 12/17/03

Altec
Altec Industries, Inc.
July 24, 2003

2570 Old Okechobee Road Telephone: (561) 686-8550
West Palm Beach, Florida
33409

Mike Berens
Lee County Traffic Engineering
5650 Enterprise Pkwy
Fort Myers, FL 33905

Dear Mike,

As a follow up to our meeting, please find pricing information for the Altec AN755MH aerial device found in the General Services Administration (GSA) catalog. This model has an insulated boom with a working height of 60' to include a single two-man platform with hydraulic platform rotator. Also included is a hydraulic jib winch or material handler at the platform. Unit shall be mounted on 132" flatbed with saddle compartments each side.

The AN755MH is shown as item #A-24 on the price list for GSA's contract # GS-30F-1028G dated August 1, 2002 through July 31, 2007. The 2004 chassis will be an International 4300 series with a GVW rating of 33,000 lbs. Standard features include a diesel engine, automatic transmission and air conditioning.

Pricing will be as follows.

Base Price for Item # A-24 (AN755MH)		\$107,676.00
Options requested:		
• INTR- Outrigger Boom Interlock	(page 2)	\$ 468.00
• TTP1- Trailer Towing Package	(page12)	\$ 564.00
• TBE- Electric Trailer Brake Controller	(page12)	\$ 193.00
	Options	\$ 1,225.00
Total GSA price including options (Delivery 180 days)		\$108,901.00

Please call me at (239) 633-1901 should you have any questions.


Bud Welch
Account Manager

01/05/2004 12:24 15615865972

ALTEC IND

PAGE 01

Altec.
Altec Industries, Inc.

2570 Old Overchokes Road
West Palm Beach, Florida
33409 Telephone: (561) 668-8550

January 8, 2004

Danny Breshnar
Lee County Fleet Management
2995 Van Buren St.
Fort Myers, FL 33916

RE: General Services Administration Price List

Dear Danny,

The new price list from General Services Administration is due to be printed and available within the next few weeks. Until then, the prices quoted in July of 2003 for two Altec lifts, an AN755MH and an A77T will be honored. In addition to the literature changes, the new price list will now have an effective date from January 1, 2004 through December 31, 2004. It will drop off this date as soon as it comes available. Please excuse our delay.

Sincerely,



Bud Welch, Account Manager
Altec Industries, Inc

ALTEC INDUSTRIES, INCORPORATED

WORLD WIDE MANUFACTURER OF:
MOBILE HYDRAULIC EQUIPMENT FOR THE UTILITY INDUSTRY,
TELECOMMUNICATIONS INDUSTRY AND SPECIAL PURPOSE VEHICLES.

GENERAL SERVICES ADMINISTRATION
FEDERAL SUPPLY SERVICE
AUTHORIZED FEDERAL SUPPLY SCHEDULE CATALOG/PRICE LIST

FSC GROUP 23 V
VEHICLE-MOUNTED PERSONNEL LIFTS, DIGGER DERRICKS & CABLE PLACERS

CLASS 2320

CONTRACT NUMBER GS-30F-1028G

CONTRACT PERIOD: AUGUST 1, 2002 THROUGH JULY 31, 2007

CONTRACTOR: ALTEC INDUSTRIES, INC.
210 INVERNESS CENTER DRIVE
BIRMINGHAM, ALABAMA 35242
OFFICE PHONE 800-892-4081 EXT 3891
CELL PHONE 205-335-2648
FAX 205-458-3881

E-MAIL: clrobins@altec.com

CONTACT: MR. CHARLES ROBINSON

BUSINESS SIZE: LARGE

1. (a) SIN 232-1, 232-2, 232-3
 1. (b) Lowest Price Model: Entire "Federal Gov't Price Sheet" reflects lowest price for models available under contract.
2. Order Limitations:
 5-8 Units per SIN: 1% Discount from Contract Price
 9-14 Units per SIN: 1.5% Discount from Contract Price
 15-19 Units per SIN: 2% Discount from Contract Price
 20+ Units per SIN: TBD at Time of Order
3. Minimum Order: \$100.00
4. Geographic Area: 48 Contiguous States and District of Columbia
5. Points of Production: See Installation Centers Listed in Catalog
6. Statement of Net Price: See Price List Blocks A-1 through A-48
7. Quantity Discount: See Number 2 (Order Limitations)
8. Prompt Payment Terms: Net 30 days
9. Government Credit Card: On Request and Approval, up to and over Micro-Threshold
10. Foreign Items: Not Applicable
11. (a) Time of Delivery: 180 to 260 days after receipt of order depending upon model ordered, as indicated in Altec "Federal Government Price List Dated 8-1-2002"
11. (b) Expedited Delivery: Not Applicable
11. (c) Overnight Delivery: Not Applicable
11. (d) Urgent Requirements: Please Contact Charles Robinson for Urgent Requirements
12. FOB: Destination in the 49 contiguous states and District of Columbia
13. Ordering Address:
 Altec Industries, Inc.
 1730 Vanderbilt Road
 Birmingham, AL 35234

 Attn: Charles Robinson
 Office Phone 800-892-4081 x3891
 Or 205-458-3891
 Cell Phone 205-335-2648
 Fax 205-458-3881
 Email: clrobins@altec.com

14. Payment Address: Altec Industries, Inc.
210 Inverness Center Drive
Birmingham, AL 35242
Attn: Scott Reed
- Wire Transfers: AmSouth Bank
Birmingham, AL
Attn: Terri Odum
AC-205 Phone 205-326-5248
ABA Routing #062000019
Account #30053064
15. Warranty: 12 months or 12,000 miles, whichever comes first
16. Export Packing Charges: \$100.00
17. Terms for Credit Cards: Credit Card Accepted Based on Approval
18. Terms for Rental, Maintenance and Repair: See Warranty
19. Terms & Conditions of Installation: Final installation points will be determined by Altec depending on plant loading & final delivery location.
20. Terms & Conditions of Repair Parts indicating date of parts price lists and any discounts from list prices: Not Applicable
21. List of Service & Distribution Points: Reference Altec Product Catalog
22. List of Participating Dealers: Not Applicable
23. Preventative Maintenance: Each unit furnished by Altec under this contract will receive one full day of training in the overall proper operation and maintenance as specified in the maintenance manual.
24. Environmental Attributes: See Compressed Natural Gas (CNG) Option in Price List
25. DUNS Number: 625217906
26. Notification Regarding CCR Registration: Altec Industries, Inc. is CCR Registered



Federal Government Price List With Discount

Effective August 1, 2002 Through July 31, 2003

Please see vendor's note in Attachment #2

<p>ITEM #A-13 MODEL L42M AS DESCRIBED ON PAGE A-13</p> <p>CHASSIS PER FEDERAL STANDARD #794U, TABLE 1, ITEM 512 EXCEPT WITH 10,000 LB. FRONT AXLE</p> <p>TOTAL "GSA" PRICE... 96,319.00</p> <p>OPTIONS FOR THIS ITEM ONLY EDC - 12-Volt DC lowering system 1,015.00 INTR - Outrigger boom interlock 870.00 AWD - All-wheel drive, 12,000 lb. 22,218.00</p> <p>Delivery 180 days</p>	<p>ITEM #A-14 MODEL TA48-T45 AS DESCRIBED ON PAGE A-14</p> <p>CHASSIS PER FEDERAL STANDARD #794U, TABLE 1, ITEM 513 EXCEPT WITH 12,000 LB. FRONT AXLE</p> <p>TOTAL "GSA" PRICE... 98,616.00</p> <p>OPTIONS FOR THIS ITEM ONLY EDC - 12-Volt DC lowering system 975.00 INTR - Outrigger boom interlock 370.00 AWD - All-wheel drive, 12,000 lb. 16,888.00</p> <p>Delivery 180 days</p>	<p>ITEM #A-15 MODEL TA45 AS DESCRIBED ON PAGE A-15</p> <p>CHASSIS PER FEDERAL STANDARD #794U, TABLE 1, ITEM 513 EXCEPT WITH 12,000 LB. FRONT AXLE</p> <p>TOTAL "GSA" PRICE... 91,394.00</p> <p>OPTIONS FOR THIS ITEM ONLY EDC - 12-Volt DC lowering system 975.00 INTR - Outrigger boom interlock 370.00 AWD - All-wheel drive, 12,000 lb. 16,888.00</p> <p>Delivery 180 days</p>
<p>ITEM #A-16 MODEL TA46M AS DESCRIBED ON PAGE A-16</p> <p>CHASSIS PER FEDERAL STANDARD #794U, TABLE 1, ITEM 513 EXCEPT WITH 12,000 LB. FRONT AXLE</p> <p>TOTAL "GSA" PRICE... 95,054.00</p> <p>OPTIONS FOR THIS ITEM ONLY EDC - 12-Volt DC lowering system 975.00 INTR - Outrigger boom interlock 370.00 AWD - All-wheel drive, 12,000 lb. 16,888.00</p> <p>Delivery 180 days</p>	<p>ITEM #A-17 MODEL AN546P AS DESCRIBED ON PAGE A-17</p> <p>CHASSIS PER FEDERAL STANDARD #794U, TABLE 1, ITEM 512 EXCEPT WITH 10,000 LB. FRONT AXLE</p> <p>TOTAL "GSA" PRICE... 86,396.00</p> <p>OPTIONS FOR THIS ITEM ONLY EDC1 - 12-Volt DC lowering system 770.00 INTR - Outrigger boom interlock 298.00 AWD - All-wheel drive, 12,000 lb. 22,218.00</p> <p>Delivery 210 days</p>	<p>ITEM #A-18 MODEL TA45-T50 AS DESCRIBED ON PAGE A-18</p> <p>CHASSIS PER FEDERAL STANDARD #794U, TABLE 1, ITEM 513 EXCEPT WITH 12,000 LB. FRONT AXLE</p> <p>TOTAL "GSA" PRICE... 101,016.00</p> <p>OPTIONS FOR THIS ITEM ONLY EDC - 12-Volt DC lowering system 975.00 INTR - Outrigger boom interlock 370.00 AWD - All-wheel drive, 12,000 lb. 16,888.00</p> <p>Delivery 180 days</p>
<p>ITEM #A-19 MODEL TA45M-T50 AS DESCRIBED ON PAGE A-19</p> <p>CHASSIS PER FEDERAL STANDARD #794U, TABLE 1, ITEM 513 EXCEPT WITH 12,000 LB. FRONT AXLE</p> <p>TOTAL "GSA" PRICE... 106,990.00</p> <p>OPTIONS FOR THIS ITEM ONLY EDC - 12-Volt DC lowering system 975.00 INTR - Outrigger boom interlock 370.00 AWD - All-wheel drive, 12,000 lb. 16,888.00</p> <p>Delivery 180 days</p>	<p>ITEM #A-20 MODEL AM50 AS DESCRIBED ON PAGE A-20</p> <p>CHASSIS PER FEDERAL STANDARD #794U, TABLE 1, ITEM 513 EXCEPT WITH 12,000 LB. FRONT AXLE</p> <p>TOTAL "GSA" PRICE... 114,992.00</p> <p>OPTIONS FOR THIS ITEM ONLY EDC1 - 12-Volt DC lowering system 1,000.00 INTR - Outrigger boom interlock 468.00 AWD - All-wheel drive, 14,000 lb. 17,858.00</p> <p>Delivery 210 days</p>	<p>ITEM #A-21 MODEL AN650P AS DESCRIBED ON PAGE A-21</p> <p>CHASSIS PER FEDERAL STANDARD #794U, TABLE 1, ITEM 512 EXCEPT WITH 10,000 LB. FRONT AXLE</p> <p>TOTAL "GSA" PRICE... 87,574.00</p> <p>OPTIONS FOR THIS ITEM ONLY EDC1 - 12-Volt DC lowering system 770.00 INTR - Outrigger boom interlock 298.00 CB - Compensating boom 3,390.00 AWD - All-wheel drive, 12,000 lb. 22,218.00</p> <p>Delivery 210 days</p>
<p>ITEM #A-22 MODEL AN650MH AS DESCRIBED ON PAGE A-22</p> <p>CHASSIS PER FEDERAL STANDARD #794U, TABLE 1, ITEM 513 EXCEPT WITH 12,000 LB. FRONT AXLE</p> <p>TOTAL "GSA" PRICE... 102,187.00</p> <p>OPTIONS FOR THIS ITEM ONLY EDC1 - 12-Volt DC lowering system 770.00 INTR - Outrigger boom interlock 468.00 CB - Compensating boom 3,390.00 AWD - All-wheel drive, 14,000 lb. 22,218.00</p> <p>Delivery 210 days</p>	<p>ITEM #A-23 MODEL AN755P AS DESCRIBED ON PAGE A-23</p> <p>CHASSIS PER FEDERAL STANDARD #794U, TABLE 1, ITEM 513 EXCEPT WITH 12,000 LB. FRONT AXLE</p> <p>TOTAL "GSA" PRICE... 100,947.00</p> <p>OPTIONS FOR THIS ITEM ONLY EDC1 - 12-Volt DC lowering system 770.00 INTR - Outrigger boom interlock 468.00 CB - Compensating boom 6,075.00 AWD - All-wheel drive, 14,000 lb. 17,858.00</p> <p>Delivery 210 days</p>	<p>ITEM #A-24 MODEL AN755MH AS DESCRIBED ON PAGE A-24</p> <p>CHASSIS PER FEDERAL STANDARD #794U, TABLE 1, ITEM 513 EXCEPT WITH 12,000 LB. FRONT AXLE</p> <p>TOTAL "GSA" PRICE... 107,676.00</p> <p>OPTIONS FOR THIS ITEM ONLY EDC1 - 12-Volt DC lowering system 1,000.00 INTR - Outrigger boom interlock 468.00 CB - Compensating boom 6,075.00 AWD - All-wheel drive, 14,000 lb. 17,858.00</p> <p>Delivery 210 days</p>

ALTEC PRICE LIST EFFECTIVE AUGUST 1, 2002 THROUGH JULY 31, 2003

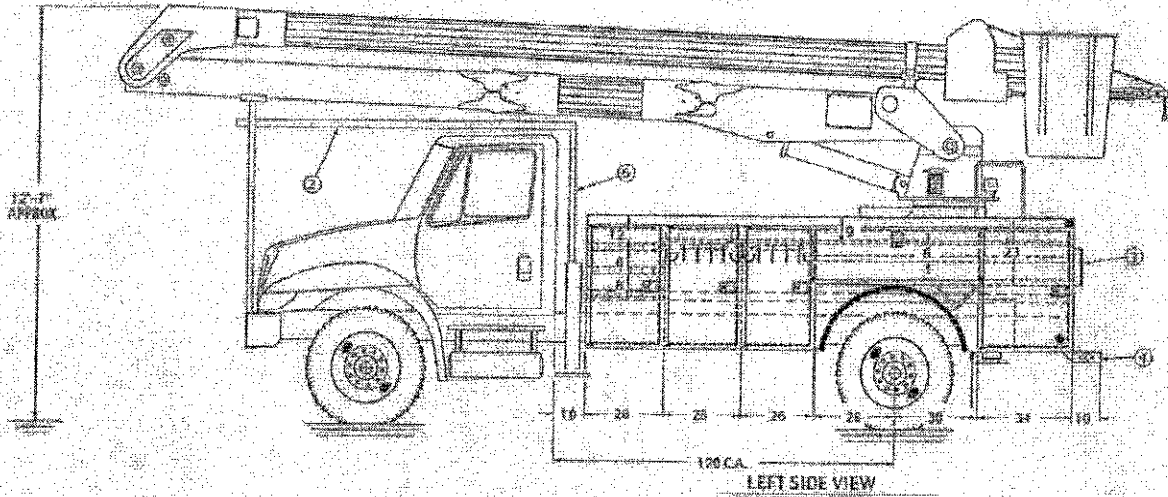


CHASSIS OPTIONS

COMMONLY ORDERED CHASSIS OPTION	APPLICATIONS	PRICE
SEHD - IN-TANK FUEL WARMER. Uses engine coolant to warm fuel in tank before pumping to engine. Maximum heated temperature for fuel 80 degrees under any circumstance.	A-9 THROUGH A-48	502.00
SRP - STANDARD RUSTPROOFING. Manufacturers standard rust proof installed on cab and body and in doors. RUSTPROOF MATERIAL USED ANCHOR TUFLEX RP785, light brown in color	ALL	205.00
STA - SPARE TIRE/WHEEL. Shipped loose with vehicle unless STC option is ordered. Front tire	ALL	456.00
STB - SPARE TIRE/WHEEL. Shipped loose with vehicle unless STC option is ordered. Rear tire	A-9 THROUGH A-48	456.00
STC - SPARE TIRE CARRIER. Mounted in the cargo area of truck with chain retainer. Can be ordered without STA or STB for use with previously owned spare tire.	ALL	195.00
TJ - LUG WRENCH/HYDRAULIC JACK. 4-way lug wrench and hydraulic jack on larger chassis. Manufacturers standard on small chassis. (See accessories)		118.00
TBC - TRAILER BRAKE CONTROLLER. Tractor package installed in cab with glad hands at rear and a set of coiled hoses for trailer connection	ALL	320.00
TBE - ELECTRIC TRAILER BRAKE CONTROLLER. Controls trailers with electric brakes, wired to 7-way plug next to pintle hook	ALL	193.00
TTP - TRAILER TOWING PACKAGE. Standard T-100A pintle hook with two eyebolts installed at rear. On aerial devices, includes TBC tractor package installed in cab with glad hands at rear and a set of coiled hoses for trailer connection.	A-9 THROUGH A-48	873.00
TTP1 - TRAILER TOWING PACKAGE. Standard T-100A pintle hook with two eyebolts installed at rear. Does not include tractor package.	A-9 THROUGH A-48	564.00
TTP2 - TRAILER TOW PACKAGE - T-60. Pintle hook with two eyebolts installed at rear	A-2 THROUGH A-8	509.00
YES - VERTICAL EXHAUST. Mounted to back of cab vertical tailpipe with guard and grab handle	A-9 THROUGH A-48	175.00
XP - EXPORT PREP. Locking compartments, bundling loose material, and coating cylinders	ALL	200.00
YD - DIESEL ENGINE IN LIEU OF GAS	SEE ITEM LIST	SEE ITEM LIST
NOTE: CHASSIS EXTERIOR PAINT COLORS AVAILABLE	SEE CHART AT REAR OF PRODUCT CATALOG	

ALTEC MODEL AN755MH

60 FT. WORKING HEIGHT ARTICULATING
AERIAL DEVICE WITH MATERIAL
HANDLING (INSULATED)



RIGHT SIDE BODY COMPARTIMENTATION

- FIRST VERTICAL - THREE (3) FIXED SHELVES WITH REMOVABLE DIVIDERS ON 4" CENTERS
- SECOND VERTICAL - MOUNTING BRACKET FOR WATER TANK, INCLUDING DRAIN SPOUT, SIX (6) FIXED MATERIAL HOOKS
- THIRD VERTICAL - ACCESS STEPS TO CARGO AREA (TREADPLATE)
- HORIZONTAL - TWO (2) FIXED SHELVES WITH REMOVABLE DIVIDERS ON 8" CENTERS
- REAR VERTICAL - SEVEN (7) FIXED MATERIAL HOOKS

LEFT SIDE BODY COMPARTIMENTATION

- FIRST VERTICAL - THREE (3) FIXED SHELVES WITH REMOVABLE DIVIDERS ON 4" CENTERS
- SECOND VERTICAL - SIX (6) FIXED MATERIAL HOOKS
- THIRD VERTICAL - SIX (6) FIXED MATERIAL HOOKS
- HORIZONTAL - ONE (1) FLAT FIXED SHELF EXTENDING THROUGH REAR VERTICAL COMPARTMENT
- REAR VERTICAL - TOP PORTION INCORPORATED INTO HORIZONTAL COMPARTMENT, LOWER PORTION VACANT

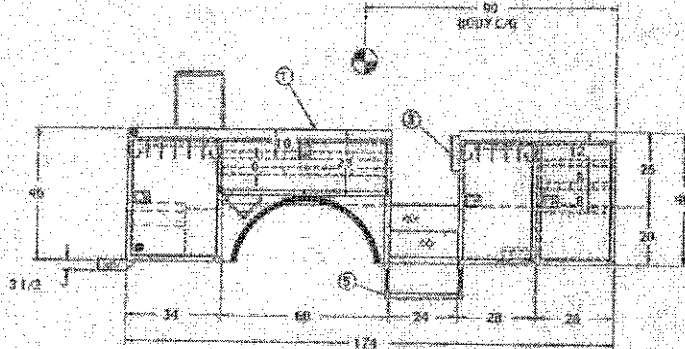
THROUGH SHELF FROM SECOND VERTICAL TO REAR OF LEFT SIDE WITH HOIST/CRACK BRACKETS AND REAR DOOR.

GALVANNEAL TREADPLATE TOPS

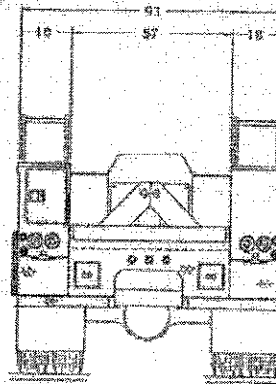
WHEEL CHUCK HOLDERS TO ACCOMMODATE HIGHER

"V" TYPE CRACK, 10" L x 3/4" H x 3" BASE

8" HIGH, METAL TYPE, SHIP-IN-YARD GATE



RIGHT SIDE VIEW



REAR VIEW

ITEM No.	PART NUMBER	DESCRIPTION
1	4101-022-01	BODY-ASLS-174-120 (110)
2	5140-001-42	GUARD-CAB
3	1403-500-01	HANDLE-GRAB
4	3150-025-73	BUMPER-TP "VEE"
5	3225-001-61	STEP-CABLE
6	3170-020-04	GUARD-WINDOW
7	3224-001-01	ACCESS STEP

TRAVEL HEIGHT INCLUDES 8" FEDESTAL SPACER

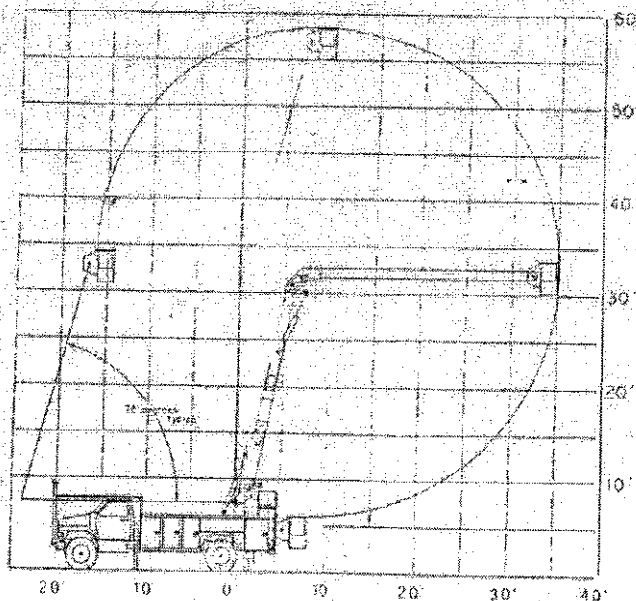
GSA STANDARD FEATURES AN755MH

- Ground to Bottom of Platform – 54.5'
- Working Height – 59.5'
- Maximum Reach – 33.0'
- Stowed Travel Height – 12.7' (Approximate)
- Platform Capacity – 350 lbs. each
- Upper Boom Articulation – 0° to 162°
- Lower Boom Articulation – -2° to 100°
- Continuous Rotation
- Fiberglass Upper Boom with Gelcoat Finish
- Steel Lower Boom with 30" Fiberglass Insert
- "Category B, 48kV and Below" ANSI Dielectric Rating
- Two (2) 24" X 24" X 42" Side-Mount Platforms
- Hydraulic Platform Rotators
- Manual Platform Tilt
- Single Handle Upper Controls
- Lower Control Station with Override of Upper Controls
- Material Handling Jib/ Winch Package at Boom Tip
- Two (2) Sets of Hydraulic Tool Circuits at Boom Tip
- Two (2) Sets of Outriggers
- Platform Covers (2)
- Platform Liners (2)
- Scuff Pads to Protect Liner Floor
- Fall Protection Systems (2)
- Full Line Body with Side Access
- Rear Bumper and Step
- Cab Guard w/ Rear Window Guard
- Hydraulic Hourmeter
- Rubber Wheel Chocks
- Strobe Light
- Back-Up and Outrigger Motion Alarms
- Painted One Solid Color
- Two (2) Operator and Maintenance Manuals
- INTL 4300 per GSA Federal Standard 794U, Item 513

Aerial Device Built at a Facility to Meet ISO 9001 Certification

Additional Options Available from OPTIONS LIST

Reach Diagram AN755MH



AN755MH Lift Capacity Chart

Upper Boom Angle	Jib Payload Capacity @ Horizontal Reach from Bucket Shaft 600 LBS in Platform 0' to 1'
0°	248
15°	306
30°	502
45°	922
60°	1500
70°	1500

AN755 AERIAL DEVICE - REACH DIAGRAM
FOR UNITS EQUIPPED WITH ISO PLATFORMS

MEMORANDUM
FROM
THE DIVISION OF PURCHASING

DATE: JANUARY 9, 2004

TO: MARILYN RAWLINGS
FLEET MANAGER

FROM: JANET SHEEHAN, CPPB
PURCHASING DIRECTOR

2004 JAN 13 PM 1:15
RECEIVED BY
LEE CO. ATTORNEY

Janet Sheehan

RE: BLUE SHEET # 20040018

PROJECT: One Altec Bucket Truck

TYPE: GSA Contract Purchase

AWARDED TO: Altec Industries, Inc.

Attn. Ms. Rawlings – When you have finished your review of this package, please forward it to Scott Gilbertson, DOT.

Attn. Mr. Gilbertson - When you have finished your review of this package, please forward it to Kristie Kroslack in the County Attorney's Office.

If there are any questions or concerns with this package, please contact Bob Franceschini at 344-5450.