

**Lee County Board Of County Commissioners  
Agenda Item Summary**

**Blue Sheet No. 20041548**

**1. REQUESTED MOTION:**

**ACTION REQUESTED:** Approve the additional expenditures on award of Project # EX040509, the purchase of modular furniture, accessories, and related services at the Florida State Contract price of \$11,609.24 from Herman Miller Workplace for the Morgue expansion project. Also approve the expenditure of a not-to-exceed amount of \$1,161. for such incidentals as miscellaneous components, overnight delivery services, etc. These funds are in addition to an already approved amount of \$123,153.72 in June.

**WHY ACTION IS NECESSARY:** Purchases over \$50,000 must be approved by the Board.

**WHAT ACTION ACCOMPLISHES:** Allows the Department of Public Works to obtain the furnishings necessary to complete the expansion of the Morgue.

**2. DEPARTMENTAL CATEGORY:**  
**COMMISSION DISTRICT #**

*C2B*

**3. MEETING DATE:**

*12-07-2004*

**4. AGENDA:**

**CONSENT**  
**ADMINISTRATIVE**  
**APPEALS**

**PUBLIC**  
**WALK ON**  
**TIME REQUIRED:**

**5. REQUIREMENT/PURPOSE:**  
*(Specify)*

**STATUTE**  
 **ORDINANCE**  
 **ADMIN. CODE** **AC-4-1**  
 **OTHER**

**6. REQUESTOR OF INFORMATION:**

**A. COMMISSIONER**  
**B. DEPARTMENT** Public Works  
**C. DIVISION**

**BY:** Jim Lavender, Director

**BACKGROUND:** On June 11, 2004, the Division of Purchasing received a request from Public Works to prepare a request to purchase the furniture needed to complete the expansion of the Morgue at the prices listed in the Florida State Contract. This amount was \$123,153.72 including incidentals. On November 15, 2004, the Division of Purchasing received a request from Public Works to prepare a request to purchase an additional \$11,609. of furniture.

Funds are available: 20874530100.506410

**Please see attachments:**

- (1) Department's Request for Additional State Contract Purchase
- (2) Florida State Contract #425-001-01-1
- (3) Herman Miller Workplace Quotation from June
- (4) Approved Bluesheet 20040791
- (5) Current Herman Miller Workplace Quotation

**8. MANAGEMENT RECOMMENDATIONS:**

**9. RECOMMENDED APPROVAL:**

A Department Director	B Purchasing or Contracts	C Human Resources	D Other	E County Attorney	F Budget Services				G County Manager
<i>[Signature]</i> 11/18/04	<i>[Signature]</i> 11-17-04 PA		<i>[Signature]</i> 11/18/04	<i>[Signature]</i> 11/18/04	OA <i>[Signature]</i> 11/22/04	OM <i>[Signature]</i> 11/22/04	Risk <i>[Signature]</i> 11/22/04	GC <i>[Signature]</i> 11/22/04	<i>[Signature]</i> 11/18/04

**10. COMMISSION ACTION:**

**APPROVED**  
 **DENIED**  
 **DEFERRED**  
 **OTHER**

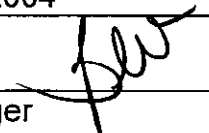
Rec. by CoAtty  
Date: *11-18-04*  
Time: *10:30 Am*  
Forwarded To:  
*Admin 11/18/04*

RECEIVED BY  
COUNTY ADMIN  
*11/18/04*  
*3:30 pm*  
COUNTY ADMIN  
FORWARDED TO:  
*11-22-04*

**MEMORANDUM  
FROM  
THE DEPARTMENT OF  
PUBLIC WORKS**

**ATTACHMENT 1**

To: Janet Sheehan  
Purchasing Director

Date: November 15, 2004  
From: Bev Dearborn  
Program Manager 

**RE: Furniture for Medical Examiner**

Please use the attached information to prepare a blue sheet to purchase modular furniture and files that are needed to complete the expansion of the Morgue from Herman Miller at the Florida State Contract price of \$11,609.24. Please include an additional 10% to allow for incidentals such as miscellaneous furniture, overnight shipping, etc.

Funds are available in account string: 20874530100.506410

Please let me know if you need any additional information.

As always, thank you for your assistance.

C: Peter Wisniewski

04 NOV 16 PM 2:22

# Furniture: Office and Files

## 425-001-01-1

Effective: 04/20/01 through 03/31/05



[Rate this contract](#)



[View survey Results](#)

### Certification

#### Certification

#### Contract Administrator How to Use This Contract Contract Documents

#### Contractors / Price Sheets

- Affordable Interior Systems, Inc. <http://www.ais-inc.com/DealerNet/GSA3.asp>
- Allseating <http://www.allseating.com/florida01>
- Allsteel, Inc. [http://www.allsteeloffice.com/government/govt\\_florida.html](http://www.allsteeloffice.com/government/govt_florida.html)
- Artopex Plus, Inc. <http://www.burby.com/artopexstate.htm>
- CompuChair <http://compuchairinc.com/contracts/florida.html>
- Canadian Atlas Furniture Corp. <http://www.burby.com/cafstate.htm>
- Cramer <http://www.cramerinc.com/florida>
- Dauphin North America <http://www.dauphin.com/florida/default.html>
- Design Options <http://www.designoptions.com/florida.htm>
- DMI Office Furniture <http://www.dmi-furniture.com/florida.htm>
- EckAdams <http://www.EckAdams.com/state%20contract/statecontract.htm>
- Ergogenesis (Bodybilt) <http://www.bodybilt.com/GSA/statecontracts/Florida>

Executive Office Concepts <http://www.eocorp.com/florida.htm>

Flex-Y-Plan Ind. Inc. <http://www.fyp.com/Flweb/flcontracthome.htm>

Global Ind. Inc. <http://www.globaltotaloffice.com/florida-state/>

GF Office Furniture, LTD <http://www.gfoffice.com/fl>

Groupe Lacasse <http://www.cfsgroup.info/state>

Gunlocke Company <http://www.gunlocke.com/GSAflorida/>

Harter <http://www.harter.com/contracts/florida/florida.html>

Haworth, Inc. <http://connect.haworth.com/stateofflorida>

Herman Miller, Inc. <http://www.hmiexperience.com/florida>

HighMark <http://www.highmarkergo.com/sfl.htm>

High Point Furniture Ind. Inc. [http://www.hpfi.com/state\\_of\\_fl.htm](http://www.hpfi.com/state_of_fl.htm)

Hon Company <http://www.hon.com/gsa/statecontract/>

Howe  
<http://www.thefalconcompanies.com/government/florida/howe>

Humanscale Corp. <http://www.humanscale.com/florida>

Indiana Desk Co. <http://www.indianadesk.com/floridagov/>

Inwood Office Furniture <http://www.inwood.net/home/floridaContracts.html>

ISE. Inc. <http://www.florida.ise-ergonomics.com>

Jofco, Inc. <http://www.burby.com/jofcostate.htm>

JSI/Community  
[http://www.jasperseating.com/contracts/state\\_of\\_florida/stateofflorida\\_ordering.htm](http://www.jasperseating.com/contracts/state_of_florida/stateofflorida_ordering.htm)

Kimball Int. [http://www.kimballoffice.com/home/gsa\\_florida/](http://www.kimballoffice.com/home/gsa_florida/)

Knoll, Inc. <http://florida.knoll.com>

Krueger Int.(KI) <http://www.ki.com/florida>

Krug, Inc. [www.krug.ca/files/florida\\_contract.htm](http://www.krug.ca/files/florida_contract.htm)

La-Z-Boy, Inc. <http://www.lzbcontract.com/stateofflorida/>

Mayline Company <http://www.mayline.com/floridacontract>

Miller Casegoods & Seating <http://www.hackimflorida.com>

Montisa Office Furniture <http://www.montisa.com/florida/>

Neutral Posture, Inc: <http://www.igoergo.com/floridaContract>

Nova Solutions, Inc.  
<http://www.novasolutionsinc.com/specphotos/novagovfla.html>

Office Specialty: <http://www.officespecialty.com/florida/>

OFS <http://contracts.ofs.com/florida>

Omni International, Inc. <http://www.omniinternational.com/fl/stflcontract.html>

Paoli, Inc. <http://216.26.133.245/statecontracts/florida.htm>

Pride Enterprises [http://www.peol.com/state\\_furniture\\_office\\_files.htm](http://www.peol.com/state_furniture_office_files.htm)

Rosemount Office Systems, Inc. <http://www.florida.rosemount-office.com/>

Sit On It Seating <http://www.sitonit.net/home/flcontract/dealerlist.htm>

Sitmatic <http://www.sitmatic.com/florida.html>

Smed International  
<http://www.smednet.com/resources/GSAinfo/externalGSAInfo.asp>

Source International  
[http://www.sourceseating.com/florida/state\\_of\\_florida\\_contract.htm](http://www.sourceseating.com/florida/state_of_florida_contract.htm)

Southern Metal <http://southernmetal.com/florida/>

Standard Desk <http://www.standarddesk.com/std/myflorida.htm>

Steelcase, Inc. <http://in2.steelcase.com/stateofflorida>

Stylex, Inc. <http://www.stylexseating.com/stateofflorida>

Superior Furniture/izzydesign  
<http://www.superior-seating.com/contracts/florida.htm>

Symbiote, Inc. <http://www.symbiote.com/FloridaState>

Tab Products Co. <http://www.tab.com/solutions/government/florida>

Teknion <http://tekfloridacontract.com>

Trendway Corp.

<http://www.trendway.com/contracts>

Vecta

<http://www.vecta.com/florida/fcontract01.html>

Via

<http://www.viagsa.com/florida.html>

Viking Acoustical Corp.

<http://www.vikingusa.com/floridacontract.htm>

WorkRite

<http://www.wrea.com/florida>

Wrightline (formerly APW Wrightline)

<http://wrightline.com/florida>

(Rev 23 Mar 04)

## The State of Florida Contract Website

Contract number - #425-001-01-1

Effective Date - April 20, 2001 - March 31, 2005

Systems Furniture    Filing and Storage Systems    Tables    Resolve  
Seating    Freestanding Desk Systems    Balance of Line Product

### State of Florida Pricing

Herman Miller Inc.

Office Furniture and Files

State of Florida Contract # 425-001-01-1

Order volume for Products 1) on a single purchase order and 2) within the same "Special Item Numbers" (SIN's) will be aggregated to determine the proper volume pricing tier. Aggregating of products in separate SIN's and /or purchase orders is not allowed.

### SIN 711-2, Freestanding Desk Systems

Price List: Commercial, September 2, 2003

#### Meridian 5000 Desk System

Net Purchase	Approx. List	Discount From List
\$100 - \$500,000	\$236 - \$1,178,689	57.58%

#### Passage Furniture Systems

Net Purchase	Approx. List	Discount From List
\$100 - \$500,000	\$225 - \$1,251,125	55.56%

#### Meridian Passage Pedestals

Net Purchase	Approx. List	Discount From List
\$100 - \$500,000	\$366 - \$2,145,923	61.62%

#### Meridian Passage Files

Net Purchase	Approx. List	Discount From List
\$100 - \$300,000	\$296 - \$886,524	66.16%
\$300,001 - \$350,000	\$886,525 - \$1,036,729	66.24%
\$350,001 - \$400,000	\$1,036,730 - \$1,188,001	66.33%
\$400,001 - \$450,000	\$1,188,002 - \$1,339,684	66.41%
\$450,001 - \$500,000	\$1,339,685 - \$1,492,537	66.50%

#### Meridian Passage Storage Products

Net Purchase	Approx. List	Discount From List
\$100 - \$300,000	\$267 - \$802,782	62.63%
\$300,001 - \$350,000	\$802,783 - \$938,841	62.72%
\$350,001 - \$400,000	\$938,842 - \$1,075,847	62.82%
\$400,001 - \$450,000	\$1,075,848 - \$1,213,265	62.91%
\$450,001 - \$500,000	\$1,213,266 - \$1,351,351	63.00%

#### Supporting Lighting, Work Tools and Electrical Cable Mgt.

Net Purchase	Approx. List	Discount From List
\$100 - \$250,000	\$353 - \$915,751	72.70%
\$250,001 - \$500,000	\$915,752 - \$2,145,923	76.70%

**Services:**

Installation Costs	Based on \$40 per hour
Space Planning Costs	Based on \$55 per hour



**ATTACHMENT** *3*

LEE COUNTY MEDICAL EXAMINERS OFFICE  
 F4093.SP4

Item	Qty	Part Number	Part Description	List \$	Est \$	Est Net \$	Self %
1	MER 4	180-1800-F	+Pcd,180 Series Bar Pull,Entry,5/8"	\$ 468.00	\$ 174.63	\$ 293.37	61.220
		TS	+treated steel				
		BU	+black amber				
		KD	+pays differently, black				
			TAG: ASST. MEDICAL EXAMINERS				
2	MER 1	26-3820-2N	+Pc,FS Lat Std Pulc 11 3/4" Dwr	\$ 708.00	\$ 285.40	\$ 422.60	61.180
		TS	+treated steel				
		BU	+black amber				
		T2	+1 1/4" high painted metal top with squared edge				
		KD	+pays differently, black				
		B2	+1 1/2" high base				
		CB	+counterweight (recommended)				
		SP	+front-to-back sling rail				
			TAG: ASST. MEDICAL EXAMINER				
3	MER 4	26-4220-2N	+Pc,FS Lat Std Pulc 11 3/4" Dwr	\$ 841.00	\$ 324.50	\$ 516.50	61.180
		TS	+treated steel				
		BU	+black amber				
		T2	+1 1/4" high painted metal top with squared edge				
		KD	+pays differently, black				
		B2	+1 1/2" high base				
		CB	+counterweight (recommended)				
		SP	+front-to-back sling rail				
			TAG: ASST. MEDICAL EXAMINERS				
4	MER 8	26-4620-2N	+Pc,FS Lat Std Pulc 11 3/4" Dwr	\$ 1,257.00	\$ 485.97	\$ 771.03	61.180
		TS	+treated steel				
		BU	+black amber				
		T2	+1 1/4" high painted metal top with squared edge				
		KD	+pays differently, black				
		B2	+1 1/2" high base				
		CB	+counterweight (recommended)				
		SP	+front-to-back sling rail				
			TAG: INVESTIGATORS				
5	MER 1	26-4820-2F	+Pc,FS Lat Std Pulc 13 1/2" FOM 18 1/8" Dwr	\$ 1,722.00	\$ 642.72	\$ 1,079.28	61.180
		TS	+treated steel				
		BU	+black amber				
		T2	+1 1/4" high painted metal top with squared edge				
		KD	+pays differently, black				
		B2	+1 1/2" high base				
		CB	+counterweight (recommended)				
		SP	+front-to-back sling rail				
			TAG: SECRETARY AREA 84				
6	MPS 1	48-3016-DB-88	+Blaze, Floor, No Doors 30W 88 5/8"	\$ 886.00	\$ 198.82	\$ 687.18	61.830
		TS	+treated steel				
		BU	+black amber				
		T2	+1 1/4" high painted metal top with squared edge				
		N24	+2 shelves total				
		B2	+1 1/2" high base				
7	MPS 28	48-3415-DB-88	+Blaze, Floor, No Doors 30W 88 5/8"	\$ 286.00	\$ 222.95	\$ 63.05	61.830
		TS	+treated steel				
		BU	+black amber				
		T2	+1 1/4" high painted metal top with squared edge				
		N24	+2 shelves total				
		B2	+1 1/2" high base				
8	MPS 2	48-3620-38	+Blz, Cor, Std Pulc 30W 20D 35 1/4"	\$ 871.00	\$ 218.30	\$ 652.70	61.890
		TS	+treated steel				
		BU	+black amber				
		N32	+2 shelves total				
		KD	+pays differently, black				
		T1	+1/4" high painted metal top with squared edge				
		B1	+1" high base				
			TAG: GENERAL OFFICE WORK AREA 87				

LEE COUNTY MEDICAL EXAMINERS OFFICE  
F4093.SP4

Item	Qty	Part Number	Part Description	Unit \$	Sub \$	Est Sub \$	Est %
9	MGR	3	28-4235-2E APR,FS Lat Box Pkz 13, 1/8" Dur -finished steel -black amber -1 1/4"-high painted metal top with squared edge -kayed differently, black -1 1/2"-high base -cupperweight (recommended) -flow-to-back filing rail TAG: FILE/ COPY/ AREA 80	\$ 241.00	\$ 204.00	\$ 204.00	84.690
10	MGR	1	40-1020-20 -Copper, Full Size SW 200 20 1/4" -finished steel -black amber -1 shelf total -kayed differently, black -1 1/4"-high painted metal top with squared edge -1 1/2"-high base TAG: FILE/ COPY/ AREA 80	\$ 204.00	\$ 204.00	\$ 204.00	84.690
11	MGR	1	8F8-7104-0510 -Copper, Full Size SW 200 20 1/4" -finished steel -black amber -1 shelf total -kayed differently, black -1 1/4"-high painted metal top with squared edge -1 1/2"-high base TAG: FILE/ COPY/ AREA 80	\$ 2,200.00	\$ 1,000.00	\$ 1,000.00	45.455
12	HQB	8	A1120.5024C -Panel, Fabric New, Wire Top Lz 36H 20W -black amber -black amber -1/2" Py Cut 4 -1/2" Py Cut 4 -1/2" Py Cut 4 -1/2" Py Cut 4	\$ 360.00	\$ 108.00	\$ 108.00	72.700
13	HQB	8	A1120.5024E -Panel, Fabric New, Wire Top Lz 36H 20W -black amber -black amber -1/2" Py Cut 4 -1/2" Py Cut 4 -1/2" Py Cut 4 -1/2" Py Cut 4	\$ 360.00	\$ 108.00	\$ 108.00	72.700
14	HQB	4	A1120.5030C -Panel, Fabric New, Wire Top Lz 36H 20W -black amber -black amber -1/2" Py Cut 4 -1/2" Py Cut 4 -1/2" Py Cut 4 -1/2" Py Cut 4	\$ 414.00	\$ 112.00	\$ 112.00	72.700
15	HQB	8	A1120.5030E -Panel, Fabric 4-Cor Wire Top Lz 36H 20W -black amber -black amber -1/2" Py Cut 4 -1/2" Py Cut 4 -1/2" Py Cut 4 -1/2" Py Cut 4	\$ 468.00	\$ 148.00	\$ 148.00	72.700
16	HQB	8	A1120.5030G -Panel, Fabric 4-Cor Wire Top Lz 36H 20W -black amber -black amber -1/2" Py Cut 4 -1/2" Py Cut 4 -1/2" Py Cut 4 -1/2" Py Cut 4	\$ 468.00	\$ 150.00	\$ 1,276.00	72.700

LEE COUNTY MEDICAL EXAMINERS OFFICE  
F4093.SP4

Item	Qty	Part Number	Part Description	Unit \$	Sub \$	Ext Sub \$	Ext \$
17	HSS 2	A1120.8480	*Panel Fabric 4-Circ W/Com P.Lc 6TH 30W	\$ 637.00	\$ 171.17	\$ 342.34	72.700
		BU	*black umber				
		BU	*black umber				
		32	*hole™-Pr Col 4				
		18	*hole™ meringue				
		32	*hole™-Pr Col 4				
		18	*hole™ meringue				
18	HSS 3	A1120.87240	*Panel Fabric 4-Circ W/Com P.Lc 6TH 30W	\$ 608.00	\$ 168.28	\$ 408.78	72.700
		BU	*black umber				
		BU	*black umber				
		32	*hole™-Pr Col 4				
		18	*hole™ meringue				
		32	*hole™-Pr Col 4				
		18	*hole™ meringue				
19	HSS 3	A1120.87200	*Panel Fabric 4-Circ W/Com P.Lc 6TH 30W	\$ 600.00	\$ 178.00	\$ 406.45	72.700
		BU	*black umber				
		BU	*black umber				
		32	*hole™-Pr Col 4				
		18	*hole™ meringue				
		32	*hole™-Pr Col 4				
		18	*hole™ meringue				
20	HSS 2	A1120.87200	*Panel Fabric 4-Circ W/Com P.Lc 6TH 30W	\$ 724.00	\$ 187.80	\$ 365.50	72.700
		BU	*black umber				
		BU	*black umber				
		32	*hole™-Pr Col 4				
		18	*hole™ meringue				
		32	*hole™-Pr Col 4				
		18	*hole™ meringue				
21	HSS 1	A1120.87480	*Panel Fabric 4-Circ W/Com P.Lc 6TH 30W	\$ 702.00	\$ 214.22	\$ 214.22	72.700
		BU	*black umber				
		BU	*black umber				
		32	*hole™-Pr Col 4				
		18	*hole™ meringue				
		32	*hole™-Pr Col 4				
		18	*hole™ meringue				
22	HSS 8	A1220.38F	*Comp. 8-Way 80 Deg Fabric 67H	\$ 148.00	\$ 28.88	\$ 218.72	72.700
		BU	*black umber				
		BU	*black umber				
		32	*hole™-Pr Col 4				
		18	*hole™ meringue				
23	HSS 8	A1220.67F	*Comp. 8-Way 80 Deg Fabric 67H	\$ 172.00	\$ 48.88	\$ 578.88	72.700
		BU	*black umber				
		BU	*black umber				
		32	*hole™-Pr Col 4				
		18	*hole™ meringue				
24	HSS 10	A1280.26H	*Pin End 3PH	\$ 98.00	\$ 8.80	\$ 98.80	72.700
		BU	*black umber				
		BU	*black umber				
25	HSS 8	A1322.08E	*Base Part ENY.DF Con 4-Circ 67L	\$ 120.00	\$ 32.76	\$ 185.80	72.700
26	HSS 1	A1311.A	*Duplex Rep. A-Circ A 8PH	\$ 181.80	\$ 41.22	\$ 41.22	72.700
		BU	*black umber				
27	HSS 1	A1311.B	*Duplex Rep. A-Circ B 8PH	\$ 151.00	\$ 41.22	\$ 41.22	72.700
		BU	*black umber				
28	HSS 1	A1311.C	*Duplex Rep. A-Circ C 8PH	\$ 161.00	\$ 41.22	\$ 41.22	72.700
		BU	*black umber				
29	HSS 1	A1311.D	*Duplex Rep. A-Circ D 8PH	\$ 161.80	\$ 41.22	\$ 41.22	72.700
		BU	*black umber				

LEE COUNTY MEDICAL EXAMINERS OFFICE  
 F4093.SP4

Item	Est	Qty	Part Number	Part Description	Unit	Est \$	Unit \$	Est \$	Unit \$
30	HGS	1	A2310.2448L SX BU	Wk Sur, 84-Edge Rect Lam 240 48W -chromatic -black amber		\$ 814.00	\$ 814.00	\$ 814.00	72.700
31	HGS	1	A2310.2454L SX BU	Wk Sur, 84-Edge Rect Lam 240 84W -chromatic -black amber		\$ 868.00	\$ 868.00	\$ 868.00	72.700
32	HGS	1	A2310.2460L SX BU	Wk Sur, 84-Edge Rect Lam 240 120W -chromatic -black amber		\$ 402.00	\$ 402.00	\$ 402.00	72.700
33	HGS	1	A2310.2472L SX BU	Wk Sur, 84-Edge Rect Lam 240 172W -chromatic -black amber		\$ 478.00	\$ 478.00	\$ 478.00	72.700
34	HGS	2	A2310.2478L SX BU	Wk Sur, 84-Edge Rect Lam 240 178W -chromatic -black amber		\$ 808.00	\$ 404.00	\$ 808.00	72.700
35	HGS	1	A2310.2490L SX BU	Wk Sur, 84-Edge Rect Lam 300 90W -chromatic -black amber		\$ 268.00	\$ 268.00	\$ 268.00	72.700
36	HGS	2	A2310.2548L SX BU	Wk Sur, 84-Edge Rect Lam 300 48W -chromatic -black amber		\$ 368.00	\$ 184.00	\$ 368.00	72.700
37	HGS	2	A2310.2580L SX BU	Wk Sur, 84-Edge Rect Lam 300 80W -chromatic -black amber		\$ 487.00	\$ 243.50	\$ 487.00	72.700
38	HGS	4	A2310.2672L SX BU	Wk Sur, 84-Edge Rect Lam 300 72W -chromatic -black amber		\$ 448.00	\$ 112.00	\$ 448.00	72.700
39	HGS	1	A2310.3084L SX BU	Wk Sur, 84-Edge Rect Lam 300 84W -chromatic -black amber TAG: PHOTOGRAPHY AREA		\$ 861.00	\$ 861.00	\$ 861.00	72.700
40	HGS	1	A2352.3048L SX BU	Wk Sur, 84-Edge Rect Lam 300 48W -chromatic -black amber		\$ 808.00	\$ 808.00	\$ 808.00	72.700
41	HGS	4	B3001L SX	Opt Frame, 84-Edge Lam -chromatic		\$ 84.00	\$ 21.00	\$ 84.00	72.700
42	HGS	8	A2360.20L BU BU	Support Panel, Wk Sur, 84-Edge Lam 300 -black amber -black amber		\$ 968.00	\$ 121.00	\$ 968.00	72.700
43	HGS	1	A2361.25 BU	CD-Leg -black amber		\$ 278.00	\$ 278.00	\$ 278.00	72.700
44	HGS	4	A2320.1478L SX	PTase Sur, 84-Edge Round/Rect Lam Top 78W -chromatic		\$ 300.00	\$ 75.00	\$ 300.00	72.700
45	HGS	1	A2330.1458L SX	PTase Sur, 84-Edge Rect Lam Top 84W -chromatic		\$ 138.00	\$ 37.15	\$ 138.00	72.700
46	HGS	1	A2321.1230 BU	Wk Sur, 84-Edge 7-12H 130 30W -black amber		\$ 108.00	\$ 27.00	\$ 108.00	72.700
47	HGS	1	A2321.1236 BU	Wk Sur, 84-Edge 7-12H 130 36W -black amber		\$ 108.00	\$ 27.00	\$ 108.00	72.700
48	HGS	3	A2321.1248 BU	Wk Sur, 84-Edge 7-12H 130 48W -black amber		\$ 121.00	\$ 33.67	\$ 121.00	72.700

LEE COUNTY MEDICAL EXAMINERS OFFICE  
 F4093.SP4

Item	Cat	Qty	Part Number	Part Description	List \$	Unit \$	Est. Bill \$	Rate %
49	HGS	3	A3362.1324	*Pip Dr UNLB-Style Pub,W/Lock 180 3/4W 15-12H KD BU SO OS *Hayed differently *black number *Match-Pr Cat 2 *Match symphony	\$ 367.50	\$ 97.48	\$ 292.50	72.700
50	HGS	6	A3362.1330	*Pip Dr UNLB-Style Pub,W/Lock 130 3/4W 15-12H KD BU SO OS *Hayed differently *black number *Match-Pr Cat 2 *Match symphony	\$ 378.26	\$ 102.88	\$ 618.28	72.700
51	HGS	2	A3362.1334	*Pip Dr UNLB-Style Pub,W/Lock 130 3/4W 15-12H KD BU SO OS *Hayed differently *black number *Match-Pr Cat 2 *Match symphony	\$ 404.10	\$ 110.39	\$ 220.80	72.700
52	HGS	1	A3362.1349	*Pip Dr UNLB-Style Pub,W/Lock 130 3/4W 15-12H KD BU SO OS *Hayed differently *black number *Match-Pr Cat 2 *Match symphony	\$ 438.50	\$ 124.49	\$ 124.49	72.700
53	HGS	1	AS410.1030	*Trackboard,B-Style 12H 30W SZ 18 *Orange-Pr Cat 2 *Orange Indigo TAG: GENERAL OFFICE WORK FAX PRINTER STATION	\$ 168.58	\$ 27.50	\$ 27.50	72.700
54	HGS	2	AS410.1034	*Trackboard,B-Style 18H 30W SZ 18 *Orange-Pr Cat 2 *Orange Indigo	\$ 158.50	\$ 34.50	\$ 69.00	72.700
55		1	AS410.1050	*Trackboard,B-Style 18H 30W SZ 18 *Atom™-Pr Cat 4 *Atom™ Partridge TAG: PHOTOGRAPHY AREA #20	\$ 202.90	\$ 38.18	\$ 38.18	72.700
56	HGS	2	AS410.1034	*Trackboard,B-Style 18H 30W SZ 18 *Atom™-Pr Cat 4 *Atom™ Partridge TAG: PHOTOGRAPHY AREA #20	\$ 211.80	\$ 67.80	\$ 115.20	72.700
57	HGS	1	AS610.25	*Tool Box,B-Style 4H 30W BU *black number TAG: GENERAL OFFICE WORK FAX PRINTER STATION	\$ 64.50	\$ 17.47	\$ 17.47	72.700
58	HGS	1	AS815.1004	*File Rail Action Office® Series 2 24W BU *black number	\$ 141.80	\$ 38.48	\$ 38.48	72.700
59	HGS	1	AS815.1030	*File Rail Action Office® Series 2 30W BU *black number	\$ 166.00	\$ 42.88	\$ 42.88	72.700
60	HGS	2	AS815.1030	*File Rail Action Office® Series 2 30W BU *black number	\$ 166.00	\$ 48.74	\$ 98.28	72.700
61	HGS	2	AS815.1049	*File Rail Action Office® Series 2 48W BU *black number	\$ 194.00	\$ 64.66	\$ 129.36	72.700
62	HGS	7	AO213.80	*Wire Strip 6H BU *black number	\$ 48.00	\$ 11.47	\$ 80.29	72.700
63	GR1	7	SUBC-INSTALLATION	INSTALLATION HARDWARE	\$ 28.18	\$ 7.58	\$ 54.75	72.700
64	HGS	12	AO216.84	*Draw Rod 5H	\$ 18.80	\$ 4.10	\$ 49.20	72.700
65	HGS	7	AO216.82	*Draw Rod 6H	\$ 18.80	\$ 4.97	\$ 30.58	72.700
66	HGS	8	AO226.	*Pin End,Chg-Off/PanelConn BU *black number	\$ 17.80	\$ 4.84	\$ 37.12	72.700

LEE COUNTY MEDICAL EXAMINERS OFFICE  
 F4093.SP4

Item	Est	Qty	Part Number	Part Description	List \$	Est \$	Est Sell \$	Sell %
67	HQS	8	AD483	*Tram Surf Support,Carow	\$ 28.00	\$ 7.84	\$ 48.84	72.700
			BU	*black unbr				
68	HQS	8	AD483	*Tram Surf Support,Mid-End	\$ 27.00	\$ 7.57	\$ 44.32	72.700
			BU	*black unbr				
69	HQS	8	GS120.18	*Pack,Pr Dispensary 6,6,12 37H 200 16W	\$ 870.50	\$ 182.81	\$ 814.33	72.700
			BU	*black unbr				
			KD	*keyed differently				
70	HQS	7	GS130.18	*Pack,Pr Dispensary 12,18 37H 200 16W	\$ 845.00	\$ 178.00	\$ 1,208.65	72.700
			BU	*black unbr				
			KD	*keyed differently				
71	HQS	8	GS010	*Dhw,Pencil 21W 16D	\$ 48.00	\$ 11.47	\$ 57.36	72.700
			BU	*black unbr				
72	HQS	9	GS912	*Utility Tray,Pod	\$ 18.00	\$ 4.10	\$ 58.80	72.700
73	HQS	3	GS120.34NS	*Task Light,E.E.No Dim,ADPProa/Etha,Canada 34W	\$ 340.00	\$ 87.88	\$ 171.28	72.700
			BU	*black unbr				
74	HQS	1	GS120.34NP	*Task Light,E.E.No Dim,Passage,Canada 30W	\$ 310.00	\$ 68.41	\$ 98.81	72.700
			BU	*black unbr				
75	HQS	8	GS120.30NS	*Task Light,E.E.No Dim,ADPProa/Etha,Canada 30W	\$ 216.00	\$ 38.81	\$ 347.06	72.700
			BU	*black unbr				
76	HQS	1	GS120.34NP	*Task Light,E.E.No Dim,Passage,Canada 30W	\$ 224.00	\$ 61.16	\$ 61.15	72.700
			BU	*black unbr				
77	HQS	3	GS120.32NS	*Task Light,E.E.No Dim,ADPProa/Etha,Canada 26W	\$ 324.00	\$ 61.16	\$ 188.48	72.700
			BU	*black unbr				
78	HQS	6	GS120.42NP	*Task Light,E.E.No Dim,Passage,Canada 42W	\$ 254.00	\$ 65.88	\$ 314.88	72.700
			BU	*black unbr				
79	HQS	4	GS120.44NP	*Task Light,E.E.No Dim,Passage,Canada 48W	\$ 238.00	\$ 65.26	\$ 261.00	72.700
			BU	*black unbr				
80	HQS	1	GS120.48NS	*Task Light,E.E.No Dim,ADPProa/Etha,Canada 48W	\$ 228.00	\$ 66.35	\$ 66.35	72.700
			BU	*black unbr				
81	HQS	1	GS120.60W	*Task Light,E.E.No Dim,Passage,Canada 60W	\$ 282.00	\$ 71.83	\$ 71.83	72.700
			BU	*black unbr				
82	HQS	10	GT110.10	*Pp007 Tray 10W	\$ 82.00	\$ 8.74	\$ 67.40	72.700
			BU	*black unbr				
83	HQS	8	GT100.4	*Vest Tray 4W	\$ 36.00	\$ 6.36	\$ 68.36	72.700
			BU	*black unbr				
84	HQS	8	GT100.	*Dug Tray	\$ 61.00	\$ 13.82	\$ 111.36	72.700
			BU	*black unbr				
85	HQS	6	GT110.84P	*Recep Tray,Full Ad,50" Long Arm,Padle Ad	\$ 382.00	\$ 104.38	\$ 338.81	72.700
			BU	*black unbr				
86	HQS	9	GT742	*Access Tray,Wk Surf Ad,Ad,Stretch	\$ 308.00	\$ 66.24	\$ 204.14	72.700
87	HQS	1	PS1VC.DC02N	*RAC,30W,18, Van Top/Wood Cmp 64L C-Lad/R Rec Leg,NDPw	\$ 1,178.00	\$ 822.17	\$ 822.17	69.500
			BU	*black unbr				
			KY	*@Cody@ light anire				
				*@@@@@@ complete				
				TACK DREYNOT MEDICAL EXAMINER				

LEE COUNTY MEDICAL EXAMINERS OFFICE  
 FA093.SP4

Item	Qty	Part Number	Part Description	Unit \$	Unit \$	Ext. Bill \$	Ext. %
88	1	PS1VE.DT22N	@Rec, 20x24, Van Top/Wood Comp Ed, L. Rec, Leg/R. C-Leg, Nonpwr BU EY ~ ~black under @Colg@ light angrs ~position complete TAG: DISTRICT MEDICAL EXAMINER	\$ 1,200.00	\$ 862.61	\$ 862.61	88.540
89	1	PS1VE.DV22N	@Rec, 20x24, Van Top/Wood Comp Ed, L. Rec, Leg/R. C-Leg, Nonpwr BU EY ~ ~black under @Colg@ light angrs ~position complete TAG: DISTRICT MEDICAL EXAMINER	\$ 1,420.00	\$ 831.25	\$ 831.25	86.580
90	1	PS3VC.H842p	@Cm, 30x20, Van Top/Wood Comp Ed, L. Full B&W, Rec, Leg, Nonpwr BU EY MP ~ ~black under @Colg@ light angrs ~P" mobility panel ~position complete TAG: DISTRICT MEDICAL EXAMINER	\$ 3,180.00	\$ 1,413.19	\$ 1,413.19	88.800
91	1	P18V-1819-88P	@Pnl, PS 814 Full, 814, Van, Pwr, B&W TB BU TZ EY KD U1 B2 CB C ~stained steel ~black under ~1 1/4" high painted metal top with squared edge @Colg@ light angrs ~ayed aluminum, black ~brushed aluminum ~1 1/2" high base ~sunweight ~standard compressor TAG: DISTRICT MEDICAL EXAMINER	\$ 1,870.00	\$ 410.87	\$ 410.87	84.930
92	1	M83V3.TCM	@Cm, 24x 30, Van Pwr 814 Full, 1 Door, P, 20W Pwr Facing TB BU U1 TV1 EY KD B2 NC ~stained steel ~black under ~brushed aluminum @1 1/4" high wood veneer top and wood composite edge with overall front @Colg@ light angrs ~ayed aluminum, black ~1 1/2" high base ~sun weight standard TAG: DISTRICT MEDICAL EXAMINER	\$ 3,070.00	\$ 1,147.28	\$ 1,147.28	82.330
93	1	28V-4230-4N	@Pnl, PS 814 Full, Pwr, 4 Door TB BU TP EY KD U1 B2 CB SP ~stained steel ~black under @1 1/4" high wood veneer top @Colg@ light angrs ~ayed aluminum, black ~brushed aluminum ~1 1/2" high base ~sunweight (recommended) ~front-to-back 18" rail TAG: DISTRICT MEDICAL EXAMINER	\$ 2,380.00	\$ 774.87	\$ 774.87	88.160
94	1	PH220.1848	~Korean, Black, 20x24, 18" W M448 MAHARAM, DOT PATTERN- 48300-005 NAVY TAG: DISTRICT MEDICAL EXAMINER	\$ 348.00	\$ 108.88	\$ 108.88	88.980
95	1	PH220.1878S	~Korean, Black, 20x24, 18" W M448 MAHARAM, DOT PATTERN- 48300-005 NAVY TAG: DISTRICT MEDICAL EXAMINER	\$ 315.00	\$ 128.58	\$ 128.58	84.950
96	1	PH200.308	~Korean, Black, 24x30, 18" W M448 MAHARAM, DOT PATTERN- 48300-005 NAVY TAG: DISTRICT MEDICAL EXAMINER	\$ 388.00	\$ 134.83	\$ 134.83	85.860
97	1	PH200.308	~Korean, Black, 24x30, 18" W M448 MAHARAM, DOT PATTERN- 48300-005 NAVY TAG: DISTRICT MEDICAL EXAMINER	\$ 388.00	\$ 134.83	\$ 134.83	84.980

LEE COUNTY MEDICAL EXAMINERS OFFICE  
 F4093.SP4

Item	Cat	Qty	Part Number	Part Description	Unit Price	Net Price	Net Price	Unit Price
98		7	46650-005	MAHARAM FABRIC DOT PATTERN 46650-005 NAVY TO BE APPLIED TO ABOVE SCREENS	\$ 90.01	\$ 630.07	\$ 630.00	0.07
99	HPE	1	FJ191.48V	2Ply Coat UNL/WA Advanced LINCOLN Class, Veneer Front, 48W -black under -Gage® light beige -kayab differently, black -reposition complete TAG: DISTRICT MEDICAL EXAMINER	\$ 1,100.00	\$ 480.84	\$ 480.84	31.980
100	HPE	1	FJ191.78V	2Ply Coat UNL/WA Advanced LINCOLN Class, Veneer Front, 78W -black under -Gage® light beige -kayab differently, black -reposition complete TAG: DISTRICT MEDICAL EXAMINER	\$ 1,234.00	\$ 615.47	\$ 615.47	35.580
101	HPE	1	FJ500.30	-Shel, 50in W -black under -reposition complete TAG: DISTRICT MEDICAL EXAMINER	\$ 215.00	\$ 98.95	\$ 98.95	24.280
102	HPE	1	FJ500.30	-Shel, 50in W -black under -reposition complete TAG: DISTRICT MEDICAL EXAMINER	\$ 228.00	\$ 99.99	\$ 99.99	26.650
103	HPE	1	PE131.8042V	2Ply Coat UNL/WA Advanced LINCOLN Class, Veneer Front, 80W -black under -Gage® light beige TAG: DISTRICT MEDICAL EXAMINER	\$ 1,490.00	\$ 622.19	\$ 622.19	34.980
104	HPE	2	PA1LE DP22N	2 Ply Coat UNL/WA Advanced LINCOLN Class, Veneer Front, 22W -black under -kayab differently, black -reposition complete	\$ 1,250.00	\$ 254.90	\$ 1,111.00	51.540
106	HPE	2	PA1LAX2EN	2 Ply Coat UNL/WA Advanced LINCOLN Class, Veneer Front, 22W -black under -kayab differently, black -reposition complete	\$ 1,250.00	\$ 254.90	\$ 1,111.00	51.540
108	HPE	4	PA1LE DP22N	2 Ply Coat UNL/WA Advanced LINCOLN Class, Veneer Front, 22W -black under -kayab differently, black -reposition complete	\$ 800.00	\$ 366.80	\$ 1,482.00	51.980
107	HPE	1	PA1LE DP32N	2 Ply Coat UNL/WA Advanced LINCOLN Class, Veneer Front, 32W -black under -kayab differently, black -reposition complete TAG: OFFICE 28	\$ 770.00	\$ 342.19	\$ 342.19	25.980
106	HPE	2	PA1LE DP22N	2 Ply Coat UNL/WA Advanced LINCOLN Class, Veneer Front, 22W -black under -kayab differently, black -reposition complete TAG: OFFICE 28 & 30	\$ 700.00	\$ 353.90	\$ 706.80	27.380
105	HPE	1	PA1LE DP32N	2 Ply Coat UNL/WA Advanced LINCOLN Class, Veneer Front, 32W -black under -kayab differently, black -reposition complete TAG: OFFICE 28	\$ 799.00	\$ 363.90	\$ 363.90	26.880



LEE COUNTY MEDICAL EXAMINERS OFFICE  
F4093.SP4

Item	Qty	Part Number	Part Description	Unit \$	Est \$	Est 50% \$	Est %
110	2	PCALE.RD3AN	On Pan, 30x30 Lam Top/Vin EdL. Rse Leg/R. Pol End, Nospur	\$ 2,050.00	\$ 911.02	\$ 1,822.04	88.500
		BU	+black amber				
		111	+network cherry				
		CM	+chromium				
		MP	+24" medesty panel				
		-	+specification complete				
111	2	PCALE.RD3AN	On Pan, 30x30 Lam Top/Vin EdL. Rse Leg/R. Pol End, Nospur	\$ 2,050.00	\$ 911.02	\$ 1,822.04	88.500
		BU	+black amber				
		111	+network cherry				
		CM	+chromium				
		MP	+24" medesty panel				
		-	+specification complete				
112	5	PH200.1843S	Screen, Black, Straight End, 18"x24"	\$ 346.00	\$ 108.30	\$ 541.40	53.380
		02	+scraps-Py Cat 2				
		15	+scraps Indigo				
		02	+scraps-Py Cat 2				
		15	+scraps Indigo				
113	2	PH200.1843R	Screen, Black, Bow R End For L. Side of Corner, 18"x24"	\$ 295.00	\$ 112.32	\$ 226.84	46.000
		02	+scraps-Py Cat 2				
		15	+scraps Indigo				
		02	+scraps-Py Cat 2				
		15	+scraps Indigo				
114	2	PH200.1843R	Screen, Black, Bow L End For R. Side of Corner, 18"x24"	\$ 288.00	\$ 112.32	\$ 226.84	46.000
		02	+scraps-Py Cat 2				
		15	+scraps Indigo				
		02	+scraps-Py Cat 2				
		15	+scraps Indigo				
115	3	PH200.1843S	Screen, Black, Straight End, 18"x24"	\$ 288.00	\$ 112.32	\$ 226.84	46.000
		02	+scraps-Py Cat 2				
		15	+scraps Indigo				
		02	+scraps-Py Cat 2				
		15	+scraps Indigo				
116	2	GA200007	CUSTOM MARKER BOARD SCREEN 80"W 88"VL ON LEFT FOR RIGHT SIDE OF CORNER	\$ 505.00	\$ 178.84	\$ 261.00	69.600
		02	+scraps-Py Cat 2				
		15	+scraps Indigo				
117	2	GA200008	CUSTOM MARKER BOARD SCREEN 80"W 88"VL ON RIGHT FOR LEFT SIDE OF CORNER	\$ 505.00	\$ 178.84	\$ 261.00	69.600
		02	+scraps-Py Cat 2				
		15	+scraps Indigo				
118	5	PH100.228	Flipper Door LHS, End LHS Close, Fabric Front, 42"W	\$ 640.00	\$ 294.48	\$ 1,422.10	85.380
		BU	+black amber				
		02	+non-Py Cat 4				
		15	+non-Py Cat 4				
		KD	+flayed differently, black				
		-	+specification complete				
119	5	PH100.488	Flipper Door RHS, End RHS Close, Fabric Front, 48"W	\$ 670.00	\$ 298.87	\$ 1,498.91	85.540
		BU	+black amber				
		02	+non-Py Cat 4				
		15	+non-Py Cat 4				
		KD	+flayed differently, black				
		-	+specification complete				
120	4	PH510.47	Panel, Ch, 47"W	\$ 292.00	\$ 118.82	\$ 133.20	66.000
		BU	+black amber				
		-	+specification complete				
121	2	BT105L	Panel, 61" Lxh Base Vinyl EdG Lxh Top 20.5" H 36"W	\$ 480.00	\$ 191.04	\$ 262.00	75.700
		2X	+black				
		WA	+white				
		BU	+black amber				
		BU	+black amber				
		-	+specification complete				

LEE COUNTY MEDICAL EXAMINERS OFFICE  
F4093.SP4

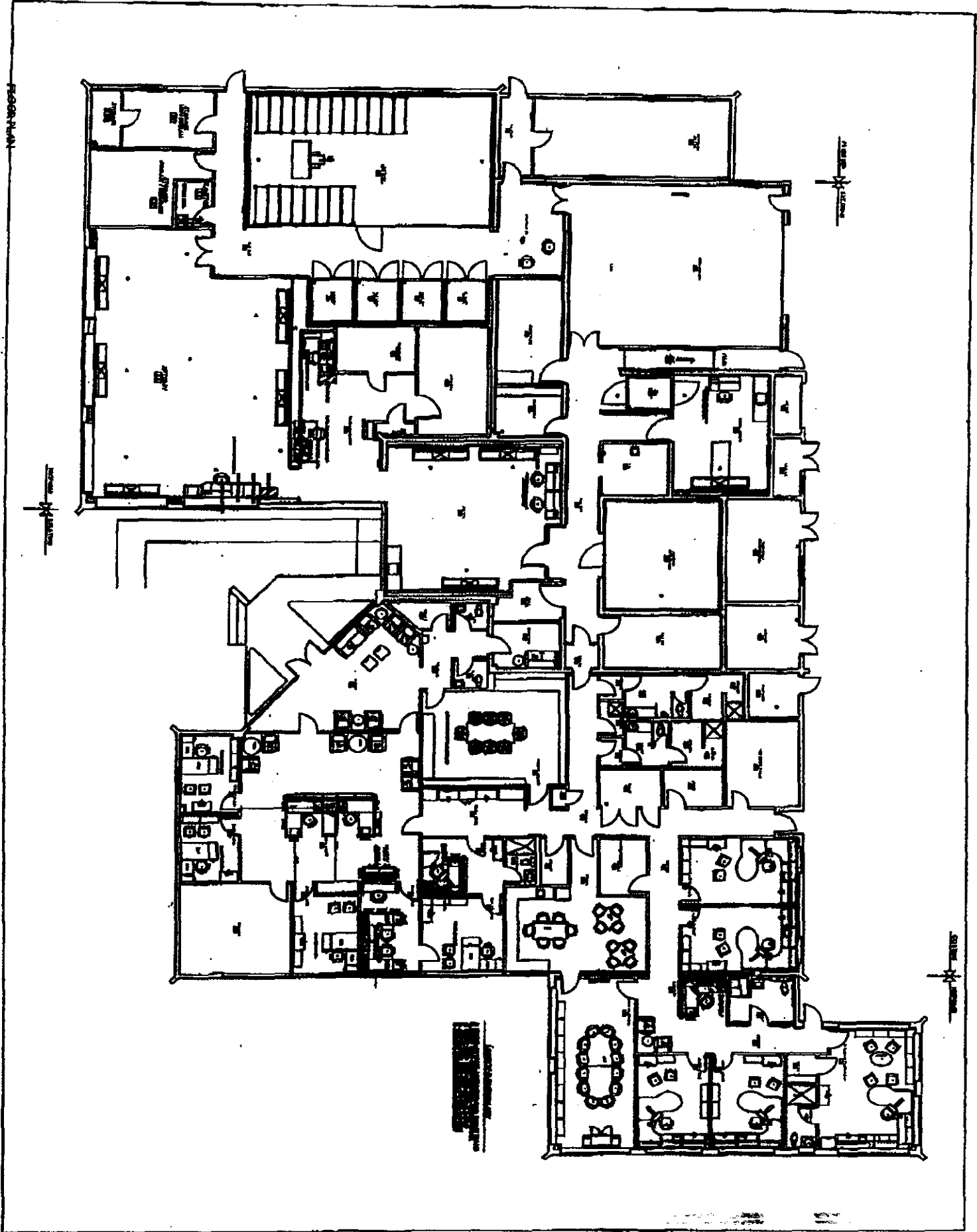
Item	Cat	Qty	Part Number	Part Description	List \$	Sell \$	Est Sell \$	Roll %
121	HCC	1	ET123L	*Table,Fixed Top Base Vln Edg/Lam Top 28.5H 94D 72W +white +white +black amber +black amber TAG: BREAK RM.	\$ 1,300.00	\$ 594.00	\$ 594.00	72.700
122	HCC	1	ET123C	*Table,Over Top Base Vln Edg/Van Top 28.5H 94D 144W +black +black +black amber +black amber TAG: CONFERENCE RM.	\$ 4,410.00	\$ 1,203.00	\$ 1,203.00	72.700
124	HCC	2	ET123L	*Table,Low/Modr Upr Base Vln Edg/Lam Top 18H 58W +black +black +black amber +black amber TAG: NATIONAL LOBBY	\$ 480.00	\$ 181.00	\$ 181.00	72.700
126	HCC	14	WC110P	*Chair,Capitol Stndng,Modr Emul,Fixed Arms +chrome +green +black wheel castor, carpet or hard floor +silver gray TAG: BREAK RM.	\$ 230.00	\$ 111.00	\$ 1,554.12	60.870
128	HCC	5	CE123AB	*Chair,Ergon 3 Phn,Aj Arm,Knee Trk,Fixed Ang,SE B +adjustable +black amber +2" hd dbl wt castor, carpet +non-photosens +black +cage-Fy Cat 2 +cage Indigo TAG: WORKSTATIONS	\$ 1,087.00	\$ 301.20	\$ 1,508.00	67.000
127	HCC	4	WR123AC	*Chair,Ergon 3 Phn,Aj Arm,Knee Trk,Fixed Ang,SE C +adjustable +black amber +2" hd dbl wt castor, carpet +non-photosens +black +cage-Fy Cat 4 +cage Indigo TAG: INVESTIGATORS	\$ 1,142.00	\$ 288.00	\$ 1,476.00	67.000
128	HCC	8	BE123AB	*Chair,Ergon 3 Phn,Aj Arm,Knee Trk,Fixed Ang,SE B +adjustable +black amber +2" hd dbl wt castor, carpet +non-photosens +black +cage-Fy Cat 1 +cage Indigo TAG: ALTOBY ROOMS	\$ 1,088.00	\$ 344.20	\$ 2,088.00	67.000
129	HCC	2	CE123AB	*Chair,Ergon 3 Phn,Aj Arm,Knee Trk,Fixed Ang,SE B +adjustable +black amber +2" hd dbl wt castor, carpet +non-photosens +cage-Fy Cat 2 +cage Indigo TAG: FRONT CLERICAL WORKSTATIONS	\$ 862.00	\$ 288.00	\$ 576.00	67.000

LEE COUNTY MEDICAL EXAMINERS OFFICE  
F4093.SP4

Item	Cat	Qty	Part Number	Part Description	List 1	List 2	Est Bid 1	Est 1
131	HSC	12	84123P-B	*Chair, Ergo 3 Post, Pz Arms, Knee TR, Sw 8	\$ 1,107.00	\$ 357.75	\$ 4,289.36	\$ 67,667
			AJ	*adjustable				
			BU	*black under				
			BC	*12" hr and wt center, carpet				
			FB	*fabric back				
			BK	*black				
			SN	*vertical perspective view collection - Fr Cat 4				
			15	*vertical perspective view collection - Fr Cat 4				
				TAG: NEW CONFERENCE RM.				
131	HSC	4	AD10UB	*Side Chair, Arms, Uphol Chair Back	\$ 474.00	\$ 137.62	\$ 516.64	\$ 53,000
			MA	*metal arms				
			US	*100% wheel center, carpet or hard floors				
			BK	*black				
			2K	*200% padding - Fr Cat M				
			05	*200% padding heavy				
				TAG: DISTRICT MEDICAL EXAMINER				
132	HSC	8	AD10UB	*Side Chair, Arms, Uphol Chair Back	\$ 380.00	\$ 182.40	\$ 1,459.20	\$ 52,080
			MA	*metal arms				
			US	*100% wheel center, carpet or hard floors				
			BK	*black				
			TK	*200% padding - Fr Cat D				
			10	*100% padding				
				TAG: ABST. MEDICAL EXAMINERS				
133	HSC	8	AD10UB	*Side Chair, Arms, Uphol Chair Back	\$ 380.00	\$ 171.84	\$ 1,374.72	\$ 52,000
			MA	*metal arms				
			05	*glide				
			BK	*black				
			SN	*vertical perspective view collection - Fr Cat 4				
			15	*vertical perspective view collection - Fr Cat 4				
				TAG: INVESTIGATORS				
134	HSC	1	AE112AWB	*Chair, Asstn Wr, Erg, Swage Pz, Tr Lm, Adj Arms	\$ 1,144.00	\$ 482.88	\$ 482.88	\$ 60,000
			FJ	*adjustable PostureFit™ support				
			01	*graphite				
			08	*2 1/2" hard center, black yoke, carpet				
			BK	*black				
			3D	*padding chrome				
			01	*padding chrome carbon				
				TAG: DISTRICT MEDICAL EXAMINER				
135	HSC	4	AE112AWC	*Chair, Asstn Wr, Erg, Swage Pz, Tr Lm, Adj Arms	\$ 1,144.00	\$ 482.88	\$ 1,931.52	\$ 60,000
			FJ	*adjustable PostureFit™ support				
			01	*graphite				
			08	*2 1/2" hard center, black yoke, carpet				
			BK	*black				
			3D	*padding chrome				
			01	*padding chrome carbon				
				TAG: ABST. MEDICAL EXAMINERS				
136	HSC	8	2082	Magazini Mid-back, Swivel, TR Pneumatic, Arms	\$ 371.00	\$ 198.62	\$ 1,348.96	\$ 60,000
			.B	CASTER: (Standard)				
			S(1)	GRADE: IV UPHOLSTERY				
			.T	Equipped Center				
				FRAME: Black				
				TAG: EXISTING CONFERENCE ROOM				
137	UNI	4	KCE-30009	ICBERG WORKMANAGER 30" X 30" DESK	\$ 440.00	\$ 322.08	\$ 1,288.32	\$ 30,000
				NEUTRAL PLATINUM GRY W/ MEDIUM GREY LAMINATE				
				TAG: AUTOPSY ROOMS				
138	UNI	4	KCE-30003	ICBERG WORKMANAGER 30" X 30" DESK	\$ 385.00	\$ 308.36	\$ 828.64	\$ 30,000
				NEUTRAL PLATINUM GREY W/ MEDIUM GREY LAMINATE				
				TAG: AUTOPSY ROOMS				
138	UNI	4	KCE-65419	ICBERG WORKMANAGER MOBILE FILE	\$ 328.00	\$ 227.50	\$ 810.00	\$ 30,000
				NEUTRAL PLATINUM GREY W/ MEDIUM GREY LAMINATE				
				TAG: AUTOPSY ROOMS				

LEE COUNTY MEDICAL EXAMINERS OFFICE  
F4093.SP4

Item	Cat	Qty	Part Number	Part Description	List \$	Sell \$	Est Sell \$	Unit %
140	UN1	1	ICC-82008	ICEBERG WORKMANAGER PRINTER STAND NEUTRAL PLATINUM GREY W/ MEDIUM GREY LAMINATE TAG: AUTOPEY ROOMS	\$ 208.00	\$ 208.00	\$ 208.00	90.000
141	UN1	1	ICC-82008	ICEBERG WORKMANAGER PRINTER STAND NEUTRAL PLATINUM GREY W/ MEDIUM GREY LAMINATE TAG: AUTOPEY ROOMS	\$ 241.00	\$ 241.00	\$ 241.00	90.000
142	NL1	1	N32AA MOMH 09037037	RENO, ONE SEAT LOUNGE MOMENTUM GRADE H COMBO TRANCE TAG: MEDICAL EXAMINERS SUITE WAITING TAG: CHAIR "A"	\$ 1,743.00	\$ 907.50	\$ 1,884.48	90.000
143	NL1	2	N32BB MOMH 09037037	RENO, MOBILE ONE SEAT LOUNGE MOMENTUM GRADE H COMBO TRANCE TAG: CHAIR "B"	\$ 1,847.00	\$ 738.80	\$ 1,477.60	90.000
144	NL1	6	N32BB GRADE 2 22182	RENO, MOBILE ONE SEAT LOUNGE GRADE 2 SEDONA RIDGEO TAG: CHAIR "C"	\$ 1,286.00	\$ 607.80	\$ 3,646.80	90.000
145	NL1	8	N32BB GRADE 2 22177	RENO, MOBILE ONE SEAT LOUNGE GRADE 2 SEDONA CANYON TAG: CHAIR "D"	\$ 1,286.00	\$ 907.80	\$ 1,523.80	90.000
146	NL1	2	N32BB MOMH 09037037	RENO, 3 AND HALF SEAT LOUNGE MOMENTUM GRADE H COMBO TRANCE TAG: LOVERSEAT "E"	\$ 2,346.00	\$ 1,858.40	\$ 2,116.80	90.000
147	NL1	2	N32BK GRADE 2 22177	RENO, OTTOMAN GRADE 2 SEDONA CANYON	\$ 418.00	\$ 178.80	\$ 596.80	90.000
148	NL3	6	OP-CR258H	OCCASIONAL TABLE 81W82D1, CYLINDER LAMINATE, HONEY TAG: (1) TO BODY VIEW RM, 021	\$ 431.00	\$ 173.80	\$ 990.00	90.000
149	NL3	1	NK0428VGL HNY	ACCESSORIES, B/W W/PALEO VISUAL BOARD LAMINATE HONEY TAG: NEW CONFERENCE ROOM	\$ 1,281.00	\$ 482.40	\$ 482.40	90.000
150	GU1	60	ELEC-INSTALLATION	RECEIVE, DELIVER & INSTALL CHAIRS PER STATE CONTRACT	\$ 18.00	\$ 18.00	\$ 1,080.00	0.000
151	GU1	1	BUDG-INSTALLATION	TO RECEIVE, DELIVER & INSTALL PRODUCT	\$ 16,850.01	\$ 16,850.00	\$ 16,850.00	0.000
162	GU1	47	DESIGN	DESIGN SERVICES SPEC ENTERED BY 104	\$ 68.21	\$ 68.00	\$ 2,986.00	0.018
				Grand Total			\$ 111,883.72	88.108



**Lee County Board Of County Commissioners  
Agenda Item Summary**

Blue Sheet No. 20040791

**1. REQUESTED MOTION:**

**ACTION REQUESTED:** Approve the award of Project # EX040509, the purchase of modular furniture, accessories, and related services at the Florida State Contract price of \$111,953.72 from Herman Miller Workplace for the Morgue expansion project. Also approve the expenditure of a not-to-exceed amount of \$11,200 for such incidentals as miscellaneous components, overnight delivery services, etc.

**WHY ACTION IS NECESSARY:** Purchases over \$50,000 must be approved by the Board.

**WHAT ACTION ACCOMPLISHES:** Allows the Department of Public Works to obtain the furnishings necessary to complete the expansion of the Morgue.

**2. DEPARTMENTAL CATEGORY:  
COMMISSION DISTRICT #**

C2E

**3. MEETING DATE:**

06-29-2004

**4. AGENDA:**

- CONSENT
- ADMINISTRATIVE APPEALS
- PUBLIC WALK ON
- TIME REQUIRED:

**5. REQUIREMENT/PURPOSE:  
(Specify)**

- STATUTE
- ORDINANCE
- ADMIN. CODE AC-4-1
- OTHER

**6. REQUESTOR OF INFORMATION:**

- A. COMMISSIONER
- B. DEPARTMENT Public Works
- C. DIVISION

BY: Jim Lavender, Director

**BACKGROUND:** On June 11, 2004, the Division of Purchasing received a request from Public Works to prepare a request to purchase the furniture needed to complete the expansion of the Morgue at the prices listed in the Florida State Contract.

Funds are available: 2087450100.506410  
*3 P.M.*

**Please see attachments:**

- (1) Department's Request for State Contract Purchase
- (2) Florida State Contract #425-001-01-1
- (3) Herman Miller Workplace Quotation

**8. MANAGEMENT RECOMMENDATIONS:**

**9. RECOMMENDED APPROVAL:**

A Department Director	B Purchasing or Contracts	C Human Resources	D Other	E County Attorney	F Budget Services	G County Manager
<i>J. Lavender</i> 6/15/04	<i>J. Sheehan</i> 6-11-04		<i>SAO</i> 6/11/04	<i>S. J. Smith</i> 6/15/04	<i>APM</i> 6/16 <i>OA</i> 6/15/04 <i>OM</i> 6/15/04 <i>Risk</i> 6/15/04 <i>GC</i> 6/15/04	<i>J. Lavender</i> 6-14-04

**10. COMMISSION ACTION:**

- APPROVED
- DENIED
- DEFERRED
- OTHER

Rec. by CoAtty

Date: 6/15/04

Time: 4:30 PM

Forwarded To: Co. Admin.  
6/15/04

RECEIVED BY  
COUNTY ADMIN: JK

6/15/04

9:30 AM SLT

COUNTY ADMIN  
FORWARDED TO: JK

6-16-04

2:10 PM

# ATTACHMENT 5

LEE COUNTY MEDICAL EXAMINER INVESTIGATOR'S OFFICES  
f4672.sp4

Item	Cat	Qty	Part Number	Part Description	List \$	Sell \$	Ext Sell \$	Sell %
1	MEC	3	6-3689-ODT	+Flip Dr Unit,Paint Dr,Tlbd Bck 36W	\$ 1,051.00	\$ 446.83	\$ 1,337.49	67.580
			TS	+textured steel				
			BU	+black umber				
			32	+lotsD-Pr Cat 4				
			18	+lotsD meringue				
			KD	+keyed differently with black lock				
2	MEC	3	6-4839-ODT	+Flip Dr Unit,Paint Dr,Tlbd Bck 48W	\$ 1,140.00	\$ 483.59	\$ 1,450.77	67.580
			TS	+textured steel				
			BU	+black umber				
			32	+lotsD-Pr Cat 4				
			18	+lotsD meringue				
			KD	+keyed differently with black lock				
3	MEC	1	6-7239-ODT	+Flip Dr Unit,Paint Dr,Tlbd Bck 72W	\$ 1,367.00	\$ 579.88	\$ 579.88	67.580
			TS	+textured steel				
			BU	+black umber				
			32	+lotsD-Pr Cat 4				
			18	+lotsD meringue				
			KD	+keyed differently with black lock				
4	MEC	2	SF6-7236-HL	+Dsk-Sngl Ped,Full Bck,Std Pul/Paint Frt,B-B-F Ltr/Full End Rt 72W 36D	\$ 1,468.00	\$ 622.73	\$ 1,246.46	67.580
			TS	+textured steel				
			BU	+black umber				
			TL	+laminat top				
			5X	+chamomile				
			CO	+chamomile				
			NTG	+no grommet				
			KD	+keyed differently with black lock				
5	MEC	2	SF6-7236-LH	+Dsk-Sngl Ped,Full Bck,Std Pul/Paint Frt,Full End Ltr/B-B-F Rt 72W 36D	\$ 1,468.00	\$ 622.73	\$ 1,246.46	67.580
			TS	+textured steel				
			BU	+black umber				
			TL	+laminat top				
			5X	+chamomile				
			CO	+chamomile				
			NTG	+no grommet				
			KD	+keyed differently with black lock				
6	MEC	1	6R0-4824-D	+Bridge,Raised Bck,48W 24D	\$ 378.00	\$ 160.36	\$ 160.36	67.580
			TS	+textured steel				
			BU	+black umber				
			TL	+laminat top				
			5X	+chamomile				
			CO	+chamomile				
			NTG	+no grommet				
7	MEC	2	6R6-4824-G0D	+Ratum w/Sng Ped,Raised Bck,Std Pul/Paint Frt,F-F Ltr/Open End Rt 48W 24D	\$ 673.00	\$ 370.33	\$ 740.66	67.580
			TS	+textured steel				
			BU	+black umber				
			TL	+laminat top				
			5X	+chamomile				
			CO	+chamomile				
			NTG	+no grommet				
			KD	+keyed differently with black lock				

LEE COUNTY MEDICAL EXAMINER INVESTIGATOR'S OFFICES  
f4672.sp4

Item	Cat	Qty	Part Number	Part Description	List \$	Sell \$	Ext Sell \$	Sell-%
8	MEC	1	6R6-4824-OGD	+Return w/Sng Ped,Raised Bck,Std Pul/Paint Frt,Open End L/V-F Rt 48W 24D +textured steel +black umber +laminete top +chamomile +chamomile +no grommet +keyed differently with black lock	\$ 673.00	\$ 370.83	\$ 370.83	57.880
			TS					
			BU					
			TL					
			5X					
			CO					
			NTG					
			KD					
9	MEC	1	6R6-7224-LG	+Desk-Sngl Ped,Raised Bck,Std Pul/Paint Frt,Full End L/V-F Rt 72W 24D +textured steel +black umber +laminete top +chamomile +chamomile +no grommet +keyed differently with black lock	\$ 1,254.00	\$ 631.65	\$ 631.65	67.880
			TS					
			BU					
			TL					
			5X					
			CO					
			NTG					
			KD					
10	MEC	1	72-2016-SP	+Pencil Dwr,Metal for 24D,30D or 36D Wk Surf +black umber	\$ 87.00	\$ 41.16	\$ 41.16	57.880
			BU					
11	MER	3	73-1518-PT	+Pencil Tray for 15W Box Dwr	\$ 16.00	\$ 5.14	\$ 15.42	61.620
12	HMU	4	G2091.L	+Cm Wedge,Sq-Edge Lam +chamomile	\$ 90.00	\$ 24.57	\$ 98.28	72.700
			5X					
13	HMU	3	G6132.30MNF	+Task Light,Utility,Std,Magnetic Ballast,No Dim,6000,30W +black umber	\$ 164.00	\$ 44.77	\$ 134.31	72.700
			BU					
14	HMU	3	G6132.42MNF	+Task Light,Utility,Std,Magnetic Ballast,No Dim,6000,42W +black umber	\$ 151.00	\$ 49.41	\$ 148.23	72.700
			BU					
15	HMU	1	G6132.60MNF	+Task Light,Utility,Std,Magnetic Ballast,No Dim,6000,60W +black umber	\$ 202.00	\$ 56.15	\$ 56.15	72.700
			BU					
16	HMU	4	G7715.06P	+Keyboard Tray,Fully Adj,Peddle Adj 21In Trk +black umber	\$ 428.00	\$ 116.84	\$ 467.36	72.700
			BU					
17	HMU	4	G7742	+Mouse Tray,Wk Surf Alt,Adj/Storable	\$ 217.00	\$ 69.24	\$ 238.96	72.700
18	GU1	1	SUBC-INSTALLATION	TO RECEIVE, DELIVER & INSTALL PRODUCT	\$ 1,975.00	\$ 1,975.00	\$ 1,975.00	0.000
19	661	5	DESIGN	SPEC ENTERED 10/16/04	\$ 55.00	\$ 55.00	\$ 275.00	0.000
				Grand Total			\$ 11,112.21	54.893



Lee County Medical Examiner - lateral file  
 F4733.SP4

Item	Cat	Qty	Part Number	Part Description	List \$	Sell \$	Ext.Sell \$	Sell %
1	MER	1	26-3820-4N	+File,F8 Lat Bid Pul,4 11 3/4" Dwr  +textured steel +black amber +1 1/4"-high painted metal top with squared edge +keyed differently, black +1 1/2"-high base +counterweight (recommended) +front-to-back filing rail	\$ 1,321.00	\$ 447.03	\$ 447.03	66.150
2	GUI	1	SUBC-INSTALLATION	TO RECEIVE, DELIVER AND INSTALL PRODUCT	\$ 60.00	\$ 60.00	\$ 60.00	0.000
3	001	1	DESIGN	SPEC ENTERED 11/4/04	\$ 0.00	\$ 0.00	\$ 0.00	0.000
Grand Total							\$ 497.03	65.747