

**Lee County Board Of County Commissioners  
Agenda Item Summary**

Blue Sheet No. 20060390

**1. ACTION REQUESTED/PURPOSE:** Approve Construction Manager Addendum under RFQ-05-07 COUNTY-WIDE CONTRACT FOR CONSTRUCTION MANAGEMENT, to The Chris-Tel Company of Southwest Florida, Inc., for the Terry Park Batter's Cage Building project, for a Guaranteed Maximum Price (GMP) of \$114,987.00 (includes CM Fee of \$10,454.00). Also, approve the alternate in the amount of \$10,450.00. The total project completion time is 90 days. Also request the Board approve waiving of the formal process (if needed) and authorize the use of the Direct Material Purchase Orders as provided for in the CM agreement with Lee County, which allows the County to purchase directly from suppliers of equipment and/or materials as a cost/time saving measure. Also, authorize the Chairwoman to execute Addendum upon receipt. Also approve budget transfer in the amount of \$150,000.00 from Capital Improvement Fund Reserves to the Terry Park Batter's Cage Building project and amend FY 05/06-09/10 CIP accordingly.

**2. WHAT ACTION ACCOMPLISHES:** Provides Lee County with a Construction Manager to provide concrete, steel, electrical work, painting and site repairs for construction of the Batter's Cage Building at Terry Park. An alternate of galvanized steel in lieu of paint was also provided.

**3. MANAGEMENT RECOMMENDATION:** Approval recommended.

**4. Departmental Category:** 02 **CZA** **5. Meeting Date:** 04-25-2006

<b>6. Agenda:</b> <input checked="" type="checkbox"/> Consent <input type="checkbox"/> Administrative <input type="checkbox"/> Appeals <input type="checkbox"/> Public <input type="checkbox"/> Walk-On	<b>7. Requirement/Purpose: (specify)</b>		<b>8. Request Initiated:</b> Commissioner Department Construction & Design Division By: Jim Lavender, Director
	<input type="checkbox"/> Statute		
	<input type="checkbox"/> Ordinance		
	<input checked="" type="checkbox"/> Admin. Code	AC-4-4	
	<input type="checkbox"/> Other		

**9. Background:**

On May 3, 2005, the Board of County Commissioners approved the award of RFQ-05-07 COUNTY-WIDE CONTINUING CONTRACT FOR CONSTRUCTION MANAGEMENT with a total of twelve (12) firms. As approved under that blue sheet, each projects' Guaranteed Maximum Price (GMP) will be brought back for Board approval.

It is being recommended that the Board approve the Construction Manager Agreement under RFQ-05-07 for the project known as TERRY PARK BATTER'S CAGE BUILDING for a total Guaranteed Maximum Price of \$114,987.00 (includes CM fee of \$10,454.00), plus the alternate in the amount of \$10,450.00.

Funds will be available in the following account: 20206730100.506540

Attachments: (1) Price Proposal from The Chris-Tel Company of Southwest Florida, Inc.  
(2) Budget Transfer for Execution

**10. Review for Scheduling:**

Department Director	Purchasing or Contracts	Human Resources	Other	County Attorney	Budget Services				County Manager/P.W. Director
					Analyst	Risk	Grants	Mgr.	
<i>[Signature]</i> 4/1/06	<i>[Signature]</i>	N/A	AD 4/11	<i>[Signature]</i> 4/12/06	<i>[Signature]</i>	<i>[Signature]</i>	4/12/06	<i>[Signature]</i> 4/13/06	<i>[Signature]</i> 4-11-06

**11. Commission Action:**

- Approved
- Deferred
- Denied
- Other

RECEIVED BY
COUNTY ADMIN: <i>[Signature]</i>
COUNTY ADMIN
FORWARDED TO: <i>[Signature]</i>

Rec. by CoAtty
Date: 4/12/06
Time: 2:23pm
Forwarded To: Batter's Cage Building at Terry Park
4/12/06

# REQUEST FOR TRANSFER OF FUNDS

FUND NAME: Capital Improvement Fund DATE: 04/11/06 BATCH NO. \_\_\_\_\_

FISCAL YEAR: 05/06 FUND #: 30100 DOC TYPE: YB LEDGER TYPE: BA


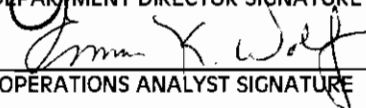
TO: Capital Projects Parks Capital Projects  
(DIVISION NAME) (PROGRAM NAME)

NOTE: PLEASE LIST THE ACCOUNT NUMBER BELOW IN THE FOLLOWING ORDER:  
FUND #-DEPT/DIV #-PROGRAM #-OBJECT CODE #-SUBFUND #-PROJECT#-COST CENTER #.  
(EXAMPLE: BB5120100100.503450)

<u>ACCOUNT NUMBER</u>	<u>OBJECT NAME</u>	<u>DEBIT</u>
<u>20206730100.506540</u>	<u>Other Contracted Services</u>	<u>\$ 150,000</u>
	TOTAL TO:	<u>\$ 150,000</u>

<u>ACCOUNT NUMBER</u>	<u>OBJECT NAME</u>	<u>CREDIT</u>
<u>GC5890130100.509910</u>	<u>Reserves for Contingency</u>	<u>\$ 150,000</u>
	TOTAL FROM:	<u>\$ 150,000</u>

EXPLANATION: Transfer \$150,000 from reservers to construct a batting cage building at Terry Park.

_____ DIVISION DIRECTOR SIGNATURE	_____ DATE	 _____ DEPARTMENT DIRECTOR SIGNATURE	<u>4-11-06</u> _____ DATE
DBS: APPROVAL <input checked="" type="checkbox"/> DENIAL <input type="checkbox"/>		 _____ OPERATIONS ANALYST SIGNATURE	<u>4-12-06</u> _____ DATE
APPROVAL <input type="checkbox"/> DENIAL <input type="checkbox"/>		_____ BUDGET OPERATIONS MANAGER SIGNATURE	_____ DATE
CO. ADMIN.: APPROVAL <input type="checkbox"/> DENIAL <input type="checkbox"/>		_____ CO. ADMIN. SIGNATURE	_____ DATE
BCC APPROVAL DATE _____		_____ BCC CHAIRMAN SIGNATURE	

BA NO. _____	AUTH CODE: _____	TRANS DATE: _____	REV. 05/93
--------------	------------------	-------------------	------------

LEE COUNTY  
RECEIVED

06 MAR -6 PM 3:47

COMM DEV/PLN WKS CNTR  
FOURTH FLOOR

## **LEE COUNTY**

LEE COUNTY  
BOARD OF COUNTY COMMISSIONERS

# **GUARANTEED MAXIMUM PRICE PROPOSAL**

For

**TERRY PARK**

**BATTER'S CAGE BUILDING**

January 17, 2006

**THE CHRIS-TEL COMPANY OF SOUTHWEST FLORIDA, INC.**

# **GUARANTEED MAXIMUM PRICE PROPOSAL**

**Terry Park – Batter’s Cage Building**

**January 17, 2006**

---

## **TABLE OF CONTENTS**

<b>SECTION I</b>	<b>SUMMARY OF WORK</b>
<b>SECTION II</b>	<b>LIST OF DRAWINGS AND SPECIFICATIONS</b>
<b>SECTION III</b>	<b>CLARIFICATIONS/ASSUMPTIONS/QUALIFICATIONS</b>
<b>SECTION IV</b>	<b>GMP COST SUMMARY</b>
<b>SECTION V</b>	<b>ALTERNATES</b>
<b>SECTION VI</b>	<b>PROJECT SCHEDULE</b>
<b>SECTION VII</b>	<b>SAFETY PROGRAM</b>

---

**THE CHRIS-TEL COMPANY OF SOUTHWEST FLORIDA, INC.**

# **SECTION I**

## **SUMMARY OF WORK**

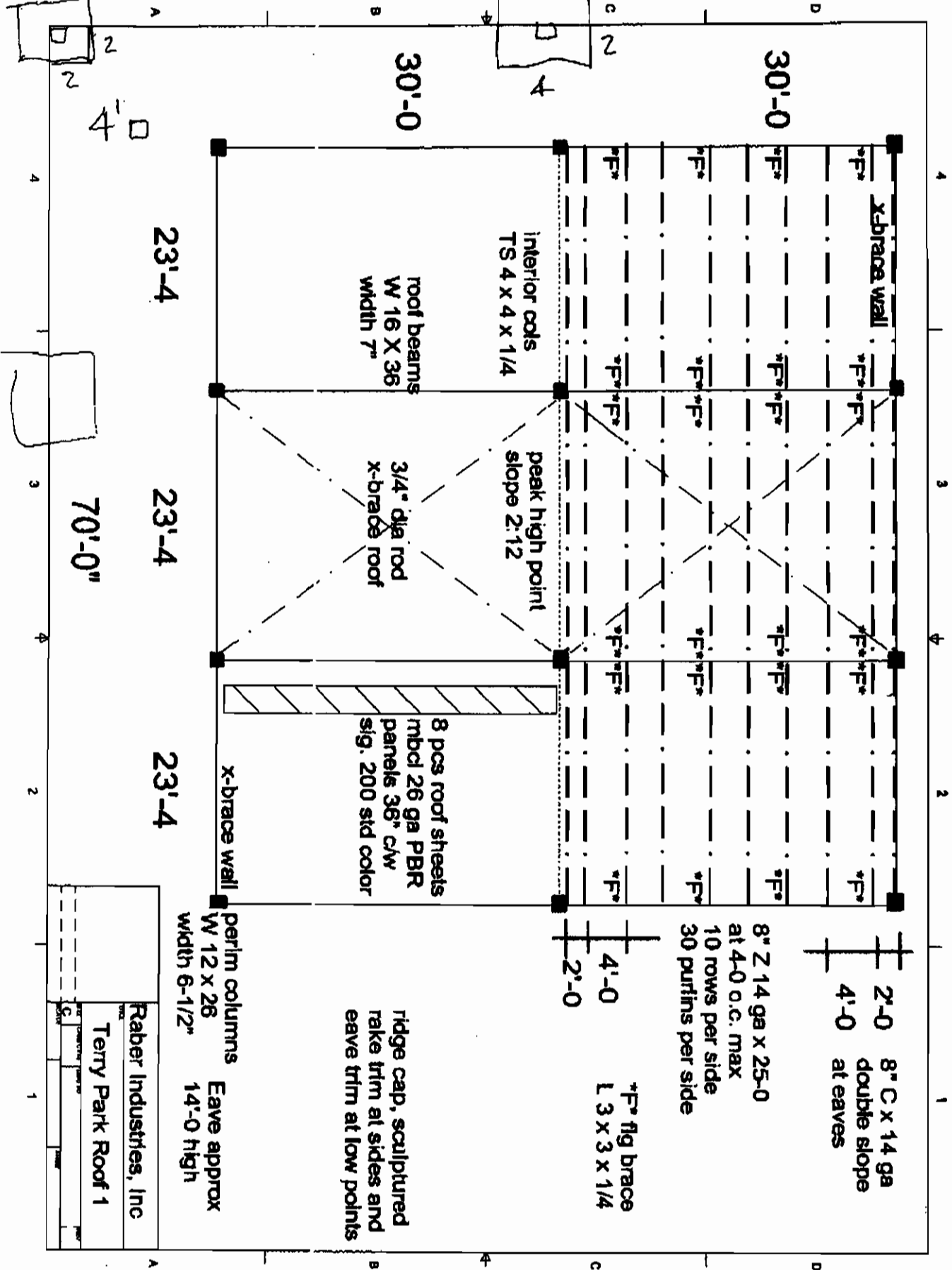
**SUMMARY OF WORK:**

- 1) Provide 60'-0" x 70'-0" metal roof structure with 14'-0" +/- eave per attached drawing.
- 2) Provide (12) 4'x4'x4' foundations cut into existing slab.
- 3) Provide lighting per attached specification sheet.
- 4) Provide (1) double duplex outlet.
- 5) Provide structure if galvanized alternate is not selected.

**DRAWING AND SPECIFICATIONS**

**The following Construction Documents for "Terry Park"**

<b>DRAWING NUMBER</b>	<b>PREPARED BY</b>	<b>TITLE</b>	<b>ISSUE DATE</b>
	<b>Raber Industries</b>		
	<b>Current Electric</b>	<b>Hubbell Cut Sheets</b>	



perim columns  
W 12 x 26  
width 6-1/2"      Eave approx  
14'-0" hgh

Ridge cap, sculptured  
rake trim at sides and  
eave trim at low points

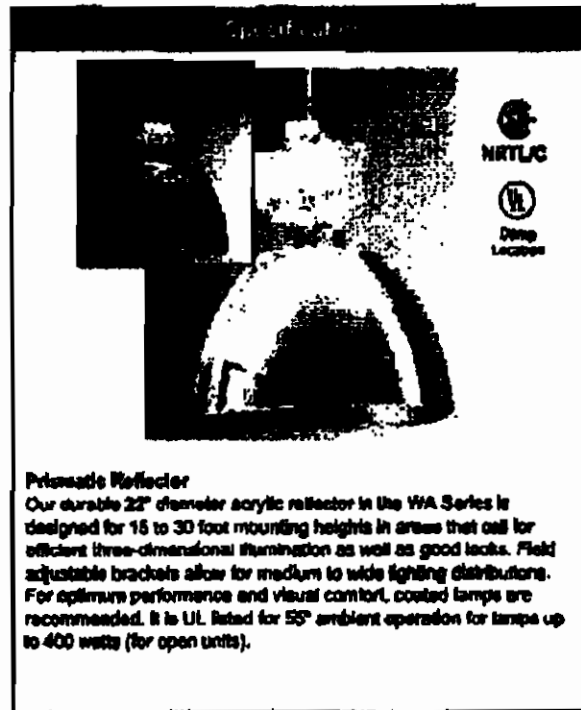
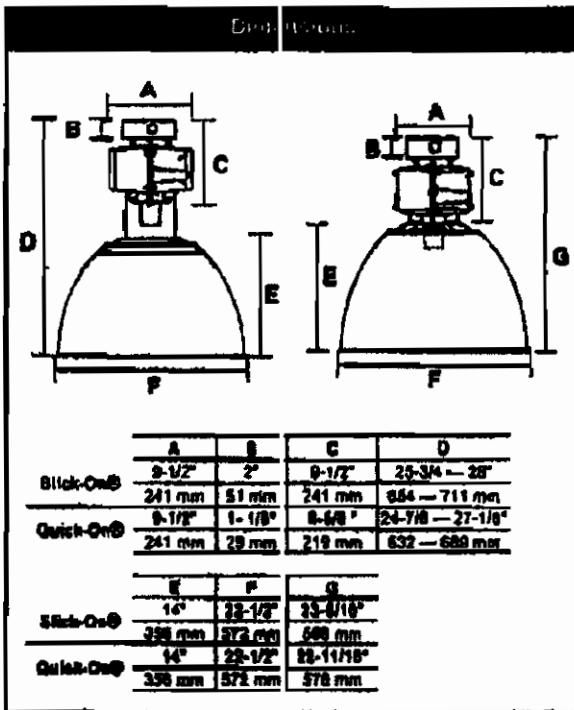
8" C x 14 ga  
double slope  
at eaves  
4'-0"  
8" Z 14 ga x 25-0  
at 4-0 o.c. max  
10 rows per side  
30 purlins per side  
4'-0"  
2'-0"

F\* fig brace  
L 3 x 3 x 1/4  
4'-0"  
2'-0"

Raber Industries, Inc  
Terry Park Roof 1



JOB **Teery Park** Type



**Ordering Information**

Series	Voltage	Source	Options	Color	Options
<b>BL</b>	<b>100</b>	<b>H</b>	<b>4</b>	<b>WA22</b>	<b>WA22</b>

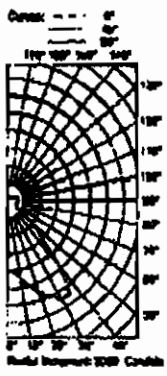
SERIES	SOURCE	OPTICS
<b>BL</b> Superbay 1 Series	<b>H</b> Metal Halide	<b>WA22</b> 22" wide acrylic reflector
	<b>S</b> High Pressure Sodium	
	<b>W</b> Pulse Start Metal Halide	
WATTAGE	VOLTAGE	COLOR
<b>150</b> 150 watt HPS	<b>5</b> 480 volt	<b>WH</b> White (standard)
<b>175</b> 175 watt MH	<b>6</b> Tri-Top® 120/277/347 volt	<b>GR</b> Gray (optional)
<b>250</b> 250 watt MH or HPS	<b>8</b> Quad-Top® 120/208/240/277 volt	
<b>320</b> 320 watt Pulse Start MH		
<b>350</b> 350 watt Pulse Start MH		
<b>400</b> 400 watt MH, HPS or Pulse Start MH		

**Notes:**  
1. MV lamps will operate on MH ballast.  
2. Linear Reactor Pulse Start ballast available — consult factory.  
Note: Options must be added on suffix to catalog number. See Options. Accessories must be ordered separately. See Accessories.

Comments

See back for Prismatic

Photometric Data												
Catalog No. BL-400HX-4WA		Lamp		Input Watts 480		Spacing Criteria 1.7		Report No.				
Lens		Lumens 36000		Ballast Factor (BF) 1.00		Spacing Criteria L 1.7		1/P-00558				
LGR 72.00		Ballast		Total Luminaire Efficiency 91.87%		Spacing Criteria 1.7 STW 4						
COEFFICIENTS OF UTILIZATION												
COC	80%				70%				50%			
	70	80	90	10	70	80	90	10	70	80	90	10
RCR												
0	105	168	183	103	99	81	181	101	83	83	80	78
1	87	88	88	88	83	88	88	88	83	88	78	45
2	86	83	78	73	86	88	75	71	74	78	67	67
3	83	78	68	63	88	82	68	62	67	63	58	61
4	77	68	61	58	74	68	68	64	61	64	62	48
5	71	61	54	48	68	68	62	47	68	68	48	48
6	68	58	58	45	64	64	47	48	61	48	41	38
7	61	68	43	38	68	68	48	37	48	49	38	31
8	57	48	38	33	64	68	37	33	41	38	31	28
9	68	41	34	28	68	68	33	28	37	31	27	24
10	48	37	38	23	48	68	29	23	34	28	24	21
ZONAL LUMENS												
Zone	Lumens	% Lamp	% Firl.									
0-30	8080	22.4	1.4									
0-40	17140	47.6	2.0									
0-60	12818	35.6	1.8									
0-80	27280	75.8	1.7									
0-120	36000	100.0	1.00									
CANDELA DISTRIBUTION												
Angle	Along B	45°	Across J									
0	7160	7780	1780									
10	8885	8485	8885									
20	11100	11100	11100									
30	12895	12895	12895									
40	9488	9488	9488									
50	3818	3818	3818									
60	1188	1188	1188									
70	1088	1088	1088									
80	1228	1228	1228									
90	1302	1302	1302									
100	1328	1328	1328									
110	1214	1214	1214									
120	911	911	911									
130	688	688	688									
140	387	387	387									
150	528	528	528									
160	324	324	324									
170	278	278	278									
180	318	318	318									



Hubbell Lighting, Inc., 2000 Electric Way, Christiansburg, Virginia 24073, (540) 382-6111 • Fax (540) 382-1526 • <http://www.hubbell-lig.com/>  
 Hubbell Canada, Inc., 670 Brock Road South, Pickering, Ontario L1W1Z8, (905) 838-1138 • Fax (905) 838-9108 • <http://www.hubbell-canada.com/>

## OPTIONS — Factory Installed. Order with fixture by adding suffix.

Suffix	Description
-CXHL	Cord and Hook/Loop with Quick-On® Hanger - SO cord wired thru hook (specify cord length - see section notes.)
-CXHLP (X <sub>1</sub> )	Cord, Hook/Loop and 20A Plug with Quick-On® Hanger - SO cord with plug <sup>1</sup> wired thru hook (specify voltage) <sup>1</sup> (specify cord length - see notes.)
-CXHLP1-15A	Cord, Hook/Loop and 15A 120 Volt Plug With Quick-On® Hanger - SO cord with plug <sup>1</sup> wired thru hook (specify cord length - see notes.)
-CXHLP4-15A	Cord, Hook/Loop and 15A 277 Volt Plug With Quick-On® Hanger - SO cord with plug <sup>1</sup> wired thru hook (specify cord length - see notes.)
-CXHLP60 (X <sub>1</sub> )	Cord, Hook/Loop and 20A Plug With Stick-On® Hanger - SO cord with plug <sup>1</sup> wired thru hook (specify voltage) <sup>1</sup> (specify cord length - see notes.)
-CXHLP60-15A	Cord, Hook/Loop and 15A 120 Volt Plug With Stick-On® Hanger - SO cord with plug <sup>1</sup> wired thru hook (specify cord length - see notes.)
-CXHLP60-18A	Cord, Hook/Loop and 15A 277 Volt Plug With Stick-On® Hanger - SO cord with plug <sup>1</sup> wired thru hook (specify cord length - see notes.)
-CXHLP60F (X <sub>2</sub> )	Cord, Hook/Loop and 20A Plug with Stick-On® Hanger - single fuse (included) SO cord with plug <sup>1</sup> wired thru hook (specify voltage) <sup>2</sup> (specify cord length - see notes.)
-CXHLP60FF (X <sub>2</sub> )	Cord, Hook/Loop and 20A Plug with Stick-On® Hanger - double fuse (included) SO cord with plug <sup>1</sup> wired thru hook (specify voltage) <sup>2</sup> (specify cord length - see notes.)
-CXHL60	Cord and Hook/Loop with Stick-On® Hanger - SO cord wired thru hook (specify cord length - see notes.)
-CXHL60F (X <sub>2</sub> )	Cord and Hook/Loop with Stick-On® Hanger - single fuse (included) SO cord wired thru hook (specify voltage) <sup>3</sup> (specify cord length - see notes.)
-CXHL60FF (X <sub>2</sub> )	Cord and Hook/Loop with Stick-On® Hanger - double fuse (included) SO cord wired thru hook (specify voltage) <sup>4</sup> (specify cord length - see notes.)
-DFP (X <sub>1</sub> )	Dead Front Disconnect - Includes cord, loop and dead front disconnect plug with Quick-On® hanger - 15" SO cord factory wired to the fixture. Order with PHS-XXXL (see mounting accessories) (specify voltage) <sup>1</sup>
-DFPF (X <sub>1</sub> )	Dead Front Disconnect with Single Fuse - Includes cord, loop and dead front disconnect plug plus single fuse block (fuse included) with Quick-On® hanger. 15" SO cord factory wired to fixture. Order with PHS-XXXL (see mounting accessories) (specify voltage) <sup>2</sup>
-DFPFF (X <sub>1</sub> )	Dead Front Disconnect with Double Fuse - Includes cord, loop and dead front disconnect plug plus a double fuse block (fuses included) with Quick-On® hanger. 15" SO cord factory wired to fixture. Order with PHS-XXXL (see mounting accessories) (specify voltage) <sup>4</sup>
-DFP60 (X <sub>1</sub> )	Dead Front Disconnect - Includes cord, loop and dead front disconnect plug with Stick-On® hanger. 15" SO cord factory wired to fixture. Order with PHS-XXXL (see mounting accessories) (specify voltage) <sup>1</sup>
-DFP60F (X <sub>1</sub> )	Dead Front Disconnect with Single Fuse - Includes cord, loop and dead front disconnect plug plus a single fuse block (fuse included) with Stick-On® hanger. 15" SO cord factory wired to fixture. Order with PHS-XXXL (see mounting accessories) (specify voltage) <sup>3</sup>
-DFP60FF (X <sub>1</sub> )	Dead Front Disconnect with Double Fuse - Includes cord, loop and dead front disconnect plug plus a double fuse block (fuses included) with Stick-On® hanger. 15" SO cord factory wired to fixture. Order with PHS-XXXL (see mounting accessories) (specify voltage) <sup>4</sup>
-EM	Emergency Circuit Complete with Stick-On® Hanger - D.C. beyond base 120V quartz socket. For connection by customer to separate power supply.
-FCX <sub>1</sub> X <sub>2</sub>	Flexible Wire System Fixture Cord. Replace X <sub>1</sub> with 3'-3" or 6'-6"; for cord length. Replace X <sub>2</sub> with required voltage: 1=120V; 2=208V; 3=240V; 4=277V; 5=480V; 6=947V
-GR	Gray Lektroac® Finish on housing. Replaces -WH in catalog number.
-JP	Job Pack. Master carton packaging of ballast housing to reduce corrugated waste disposal. For shipment to jobsite only.
-LRJ <sup>2</sup>	Lower Luminaire Retainer - A snap-in cable on housing secures reflector to ballast housing.
-NMM	No Mounting Method - Neither Stick-On® nor Quick-On® provided with luminaire. Mounting method must be ordered as an accessory. Option used for applications requiring mounting method supplied in advance of luminaire.
-OSS	Quartz Standby System - On when power is restored. Off when HID lamp restrikes. Wattage of quartz lamp (not included) may not exceed wattage of HID lamp. (250W max. recommended). Uses 120V DC beyond base lamp. Factory wired.



Lighting, Inc.

Hobasite Lighting, Inc., 2000 Elcadio Way, Christiansburg, Virginia 24073, (540) 382-6111 • Fax (540) 382-1526 • <http://www.hobasite-lighting.com>  
 Hobasite Canada, Inc., 670 Brook Road South, Pickering, Ontario L1W1Z8, (905) 839-1138 • Fax (905) 839-8108 • <http://www.hobasite-canada.com>

# **SECTION II**

## **LIST OF DRAWINGS AND SPECIFICATIONS**

**SUPERBAT I WA SERIES**

**Standard 22 inch Prismatic Acrylic Reflector**

**BL-WA22**

OPTIONS — Factory installed. Order with fixture by adding suffix.

Suffix	Description
-QST	Quartz standby with time delay - On when power is restored. Off when HID lamp restrikes and has warmed up. Wattage not to exceed wattage of HID lamp (250 watt max recommended) uses 120 volt DC beyond base lamp. Factory wired.
-SLD-1	Switch Level Dimming with 120V control. <sup>5</sup>
-SLD-2	Switch Level Dimming with 24V control. <sup>5</sup>
-SLD-3	Switch Level Dimming with 277V control. <sup>5</sup>
-SO	Slick-On® Thru Wire Outlet Box for 3/4" pendant or side entry conduit
-SOF (X <sub>2</sub> )	Slick-On® Thru Wire Outlet Box, single fuse (included) for 3/4" pendant or side entry conduit (specify voltage) <sup>6</sup>
-SOFF (X <sub>2</sub> )	Slick-On® Thru Wire Outlet Box, double fuse (included) for 3/4" pendant or side entry conduit (specify voltage) <sup>6</sup>
-TR(X <sub>2</sub> ) <sup>2,7</sup>	Top Luminaire Retainer - Chain secures ballast housing to structure when additional safety precautions are required. Ship tied in housing carton. Specify length. Recommended maximum slack - 3".

- Note: To specify cord length substitute "C" as follows: 2-2 FT, 4-4 FT, 6-6 FT, 8-8 FT, 10-10 FT, 12-12 FT
- To specify voltage substitute "X<sub>1</sub>" as follows: 1-120V, 2-208V, 3-240V, 4-277V, 5-480V, 6-547V
  - Luminaire retainers reduce risk of equipment falling.
  - To specify voltage substitute "X<sub>2</sub>" as follows: 1-120V, 4-277V, 6-547V
  - To specify voltage substitute "X<sub>3</sub>" as follows: 2-208V, 3-240V, 5-480V
  - For Motion Sensor and Switch Level in remote Panel accessories see Controls on page 355
  - Twist-Lock plug.
  - To specify length, substitute (X<sub>3</sub>) as follows: 8-6', 10-10', 12-12', 18-18'

**ACCESSORIES — Must be ordered separately**

Catalog Number	Description
B-LLR <sup>1</sup>	Lower Luminaire Retainer - 2' cable secures reflector to ballast housing
B-TLR(X <sub>1</sub> ) <sup>1,3</sup>	Top luminaire retainer - Chain secures ballast housing to structure when additional safety precautions are required. Specify length.
BL-FLUSH-MT-KIT	Adapter bracket for mounting CH-WA22/WA22 reflector flush to the bottom of the Superbat ballast housing.
BL-QO	Quick-On® 3/4" pendant mount.
BL-SO	Slick-On® thru wire outlet box for 3/4" pendant or side entry conduit.
BL-SOF	Slick-On® single fusing (fuses not included) thru wire outlet box for 3/4" pendant or side entry conduit mount with single fuse holder.
BL-SOFF	Slick-On® double fusing (fuses not included) thru wire outlet box for 3/4" pendant or side entry conduit mount with two fuse holder.
X WAZ-ENC	22" Flat Acrylic lens - 1/8" acrylic lens for "WA" acrylic reflector. (40°C maximum operating temperature with lens in place in reflector) <i>Bottom Enclosure</i>
WA22-CDL	22" Conical Acrylic - Conical drop lens for "WA" acrylic reflector (40°C maximum operating temperature with lens in place in reflector)
WA22-DLR	Dropped lowbay refractor lens for 22" WA acrylic reflector (40°C maximum with lens in place in reflector)
WG-23	23" Wireguard - corrosion resistant, welded steel with center lamp access.



Hubbell Lighting, Inc., 2000 Electric Way, Christiansburg, Virginia 24073, (540) 382-6111 • Fax (540) 382-1826 - <http://www.hubbell-lt.com>  
 Hubbell Canada, Inc., 870 Brock Road South, Pickering, Ontario L1W 1Z8, (905) 836-1136 • Fax (905) 836-0108 - <http://www.hubbell-canada.com>

296 0300850

GE SUPPLY

**SUPERBAT I TIA SERIES**

Prismatic Acrylic Reflector

10:21:30 a.m.

01-13-2006

0.00

**DL-WALL**

**ACCESSORIES — Must be ordered separately**

Catalog Number	Description
<b>MOUNTING ACCESSORIES</b>	
<b>FHE-XXX<sup>1</sup></b>	Die Cast Aluminum Power Hook with 20A Twist-Lock® Receptacle - ceiling or 3/4" pendant mount, with 3/4" side entry for thru wiring. Cord, Hook/Loop and plug (20 amp) included.
<b>FHE-XXX-L<sup>2,4</sup></b>	As above, except cord, Hook/Loop, and plug not included.
<b>SY3-XXX-2<sup>1</sup></b>	Rugged Steel Power Hook with 20A Twist-Lock® Receptacle- pendant or surface mount, 3/4" thru wiring capability. Cord, Hook/Loop and plug (20 amp) included.
<b>SY3-XXX-L<sup>2,4</sup></b>	As above, except cord, Hook/Loop and plug not included.

1. Luminaire remains/safety cables reduce risk of equipment falling.
2. Cord, Hook/Loop, and Plug must be added to fixture as option, example: "CMLP"
3. Cord, Hook/Loop, and Dead Front Plug must be added to fixture as option, example: "DFP"
4. To specify voltage, replace "XXX" with 120, 208, 240, 277, 347, 480.
5. To specify length, substitute "L," as follows: 6-6', 10-10', 12-12', 18-18'.

**NEMA CONFIGURATIONS**

Voltage	Description	Plug <sup>1</sup>		Receptacle
		NEMA #	Plug #	NEMA #
<b>20 Amp Twist-Lock Plugs and Receptacles</b>				
120		L5-20P	2311	L5-20R
208		L6-20P	2321	L6-20R
240	2 pole, 3 wire grounding	L8-20P	2321	L8-20R
277		L7-20P	2331	L7-20R
480		L9-20P	2341	L9-20R
<b>15 Amp Twist-Lock Plugs and Receptacles</b>				
120		L5-15P	4720C	L5-15R
208		L6-15P	4570C	L6-15R
240	2 pole, 3 wire grounding	L8-15P	4570C	L8-15R
277		L7-15P	4770C	L7-15R

Note: All plugs used are manufactured by Hubbell Wiring Device Division.  
 1. CSA certified.



Lighting, Inc.

Hubbell Lighting, Inc., 2000 Electric Way, Christiansburg, Virginia 24073, (540) 832-4111 • Fax (540) 262-1628 • <http://www.hubbell-lg.com/>  
 Hubbell Canada, Inc., 670 Brock Road South, Pickering, Ontario L1W1Z8, (905) 930-1138 • Fax (905) 838-8108 • <http://www.hubbell-canada.com/>

## **SECTION III**

### **CLARIFICATIONS/ASSUMPTIONS/ QUALIFICATIONS**

**CLARIFICATIONS/ASSUMPTIONS/QUALIFICATIONS**

- 1) Permit not required.**



# **SECTION IV**

## **GMP COST SUMMARY**

<b>Cost of the Work:</b>	<b>\$ 104,533.00</b>
<b>C.M. Fee:</b>	<b>\$ 10,454.00</b>
<b>Total GMP for this Project:</b>	<b>\$ 114,987.00</b>

---

**Alternate:**

**Provide galvanized structure in lieu of painted structure.**

<b>Add:</b>	<b>\$ 10,450.00</b>
-------------	---------------------

**TERRY PARK**

CONCRETE	\$	11,636.00
STEEL	\$	57,857.00
ELECTRICAL	\$	20,300.00
PAINTING	\$	6,500.00
SITE REPAIRS	\$	1,000.00
GENERAL CONDITIONS	\$	7,240.00
C.M.FEE	\$	10,454.00
TOTAL	\$	114,987.00

**ALTERNATE****PROVIDE GALVANIZED IN LIEU OF PAINT**

STEEL	\$	16,000.00
PAINTING	\$	(6,500.00)
C.M. FEE	\$	950.00
TOTAL ADD	\$	10,450.00

**PROJECT: LEE CO. TERRY PARK****ADMINISTRATIVE/GENERAL CONDITIONS BREAK DOWN**

<u>ITEM</u>	<u>QUANTITY</u>	<u>UNIT</u>	<u>MULTIPLIER</u>	<u>BID</u>
PROJECT SUPERVISOR	4	\$ 2,500.00	0.1	\$ 1,000 00
PROJECT MANAGER	4	\$ 2,850.00	0.1	\$ 1,140 00
PROJECT ADMINISTRATOR				\$ ..
LABOR CLEAN UP	4	\$ 400.00	1	\$ 1,600 00
TOOLS/EQUIPMENT				\$ ..
INITIAL TRAILER SET UP & REMOVAL		\$ 630.00		
TRAILER		\$ 314.00	1	\$ ..
PORTABLE TOILET		\$ 69.00	1	\$ ..
TEMP. WATER/ BY OWNER				\$ ..
TEMP. POWER		\$ 145.00	1	\$ ..
TEMP. TELEPHONE		\$ 60.00	1	\$ ..
DUMPSTER	2	\$ 500.00	1	\$ 1,000 00
HAZARDOUS WASTE REMOVAL		\$ 5,700.00	1	\$ .
BLDG. PERMIT/ BY OWNER				\$ .
PLAN REVIEW				\$ .
IMPACT FEE/ BY OWNER				\$ .
NIGHT/WEEKEND PREMIUM				\$ .
EQUIPMENT RENTAL				\$ .
FIRE PROTECTION				\$ .
TRUCK	0	\$ 450.00	1	\$ .
GAS	0	\$ 50.00	1	\$ .
SIGNAGE/BARRICADES	1	\$ 500.00	1	\$ 500.00
LIABILITY INSURANCE		\$ 1,200.00	1	\$ .
TESTING/SURVEYING		\$ 7,500.00	1	\$ .
BUILDERS RISK INSURANCE				\$ .
PLANS	0	\$ 35.00	1	\$ .
FINAL CLEAN	1	\$ 2,000.00	1	\$ 2,000.00
PROJECT TOTAL				\$ 7,240.00

# PROPOSALS

# ***STRUCTURE***

From: Marilyn Vandervort 2392660503 To: CHRIS-TEL

**RABER INDUSTRIES, INC., 2100 SEBASTIAN CT, ALVA, FL 33920  
PHONE 239-728-5527 - FAX 239-728-5526 - TOM RABER CELL 239-229-2957**

TO: CHRIS-TEL DATE: 12/21/2005  
FAX: REVISION #1  
ATTN: HOWARD

PROJECT: TERRY PARK BATTING CAGE ROOF LOCATION: FORT MYERS, FL

**BUDGET PRICE TO FURNISH & INSTALL**

- 1 COLUMNS & BEAMS FOR METAL BUILDING 60 X 70
- BEAM FRAMES SPAN 80-0 DIRECTION
- ROOF PURLINS AND FRAMES ARE PRIME PAINTED ONLY
- ROOF SHEETS ARE STANDARD MBCI SIGNATURE 200 COLOR
- X-BRACING 2 PLACES IN ROOF AND 2 PLACES IN WALLS AS REQUIRED
- NO WALL FRAMING IS INCLUDED
- WE INCLUDE SEALED DRAWINGS FOR ABOVE ITEMS
- EAVE HEIGHT APPROXIMATELY 14'-0"; ROOF SLOPE APPROX. 2": 12"

**EXCLUSIONS:**

- 1 CONCRETE SLAB (EXISTING) OR ANY NEW CONCRETE FOOTERS OR GRADE BEAMS
- 2 ANY GALVANIZING OR ANY FINISH PAINTING OF ANY ITEMS
- 3 PERMIT, SURVEY, INSPECTION OR TESTING FEES, BONDS
- 4 ANY ITEMS NOT SPECIFICALLY LISTED ABOVE

**BID QUALIFICATIONS:**

- 1 OTHERS ARE RESPONSIBLE FOR CONCRETE SLAB & FOOTER DESIGN AND INSTALLATION. OTHERS ARE TO PROVIDE ADEQUATE CRANE ACCESS ADJACENT TO OUR WORK. ALL SCHEDULES DEPEND ON ENGINEER'S AND SUPPLIERS' LEAD TIMES.

**PRICE IS VALID A MAXIMUM OF \*\* 30 \*\* DAYS FROM DATE**

SCHEDULES TO BE MUTUALLY AGREED UPON. DELIVERIES ARE SUBJECT TO SUPPLIER'S AND OUR SCHEDULES. PAGE 1 OF 1

PRICE: \$57,857.00  
STRUCT: GRAY  
JOIST:  
RAILS:  
SALES TAX INCLUDED - YES  
TERMS: NET 30 DAYS

\_\_\_\_\_  
THOMAS E. RABER, JR., PRESIDENT

ACCEPTED DATE: \_\_\_\_\_

BY: \_\_\_\_\_

**RABER INDUSTRIES, INC., 2190 SEBASTIAN CT, ALVA, FL 33920  
PHONE 239-728-5527 - FAX 239-728-5526 - TOM RABER CELL 239-229-2957**

TO: CHRIS-TEL  
FAX:  
ATTN: HOWARD

DATE: 12/21/2005  
REVISION #1

PROJECT: TERRY PARK BATTING CAGE ROOF LOCATION: FORT MEERS, FL

**BUDGET PRICE TO FURNISH & INSTALL**

- 1 COLUMNS & BEAMS FOR METAL BUILDING 60 X 70  
BEAM FRAMES SPAN 60-0 DIRECTION  
ROOF PURLINS AND FRAMES ARE PRIME PAINTED ONLY  
ROOF SHEETS ARE STANDARD MBCI SIGNATURE 200 COLOR  
X-BRACING 2 PLACES IN ROOF AND 2 PLACES IN WALLS AS REQUIRED  
NO WALL FRAMING IS INCLUDED  
WE INCLUDE SEALED DRAWINGS FOR ABOVE ITEMS  
EAVE HEIGHT APPROXIMATELY 14'-0"; ROOF SLOPE APPROX. 2": 12"

**\*\* NOW REVISED TO GALVANIZED STEEL FRAME, PURLINS, AND GALVALUME SHEETS \*\***

**EXCLUSIONS:**

- 1 CONCRETE SLAB (EXISTING) OR ANY NEW CONCRETE FOOTERS OR GRADE BEAMS
- 2 ANY GALVANIZING OR ANY FINISH PAINTING OF ANY ITEMS
- 3 PERMIT, SURVEY, INSPECTION OR TESTING FEES, BONDS
- 4 ANY ITEMS NOT SPECIFICALLY LISTED ABOVE

**BID QUALIFICATIONS:**

- 1 OTHERS ARE RESPONSIBLE FOR CONCRETE SLAB & FOOTER DESIGN AND INSTALLATION. OTHERS ARE TO PROVIDE ADEQUATE CRANE ACCESS ADJACENT TO OUR WORK. ALL SCHEDULES DEPEND ON ENGINEER'S AND SUPPLIERS' LEAD TIMES.
- 2 GALVANIZING IS A LONG LEAD TIME ITEM.

**PRICE IS VALID A MAXIMUM OF \*\* 30 \*\* DAYS FROM DATE**

SCHEDULES TO BE MUTUALLY AGREED UPON. DELIVERIES ARE SUBJECT TO SUPPLIER'S AND OUR SCHEDULES. PAGE 1 OF 1

PRICE: \$73,857.00  
STRUCT: GALV  
JOIST:  
RAILS:  
SALES TAX INCLUDED - YES  
TERMS: NET 30 DAYS

\_\_\_\_\_  
THOMAS E. RABER, JR., PRESIDENT

ACCEPTED DATE: \_\_\_\_\_

BY: \_\_\_\_\_

***CONCRETE***



---

# O.B.C.

## Ogden Brothers Construction, Inc.

---

1141 Sun Century Road Suite 100  
Naples, FL 34110

(239) 289-5798  
Fax: (239) 582-7649

---

### PROPOSAL

Date: December 29, 2005  
Job Name: Terry Park - Column Footers

The following is a breakdown of our proposal for 12 4'x4'x4' concrete footers cut into existing 4" slab for Terry Park. Work includes cutting existing slab, excavation of footer, steel, concrete, setting in-beds if necessary, place concrete, finish, clean-up.

Labor	.....	\$ 5,850
Concrete	.....	\$ 3,911
Steel	.....	\$ 1,250
Materials	.....	\$ 625
<b>Total</b>	.....	<b>\$11,636</b>

Exclusions:  
Does not include permit/inspection fees  
Dumpster for material removal provided by others on-site.

Please send contract if in agreement with the above pricing information.

\_\_\_\_\_  
Rob Ogden  
  
\_\_\_\_\_  
OBC - President  
Company - Title

\_\_\_\_\_  
Howard Wheeler  
  
\_\_\_\_\_  
Chris-Tel Company - President  
Company - Title

\_\_\_\_\_  
Date

\_\_\_\_\_  
Date

***PAINT***

# **NANCE PAINTING**

**Commercial — Residential — Industrial** \_\_\_\_\_

**January 10, 2006**

**The Chris-Tel Company  
RE: Terry Park Building**

---

**Painting of structural steel building**

**Price: \$8,500.00**

**Bill Nance**

***ELECTRIC***



**Current Electric Service, Inc.**

8701 DIVISION DRIVE SUITE B  
FORT MYERS, FL 33905  
(239) 494-0039  
FAX (239) 444-0037

The ChrisTel Co.  
2546 Edison Ave.  
Ft. Myers, FL 33901

1/13/06

**Reference: Terry Park / Batting Cages Lighting**

**We hereby propose to furnish all labor and material necessary to provide a complete electrical installation in accordance with the provided drawings, specifications, and the following scope of work as detailed by Current Electric Service, Inc.**

- 1) Provide and install (24) low bay light fixtures.
- 2) Provide and install (1) double duplex receptacle.
- 3) Utilize existing service for power requirements.

Base Bid.....	Lithonia Package.....	\$21,000.00
Base Bid Alternate #1.....	Hubbell Package.....	\$20,300.00
Base Bid Alternate #2.....	Musco Package.....	\$52,400.00

Musco package does not include separate switching of each bay.

**Payable on the following terms: Invoiced as per contract draw  
This proposal is void if not accepted in writing within 30 days.**

Accepted by: \_\_\_\_\_ Date: \_\_\_\_\_  
*Authorized Representative*

Sincerely,  
Current Electric Service, Inc.,

Duane Chamberlain II, Project Manager

# **SECTION VI**

**PROJECT SCHEDULE**

***TO BE DETERMINED***

# **SECTION VII**

## **SAFETY PROGRAM**

## **SAFETY PROGRAM**

- A. Provide access to building at all times.
  - 1) To coordinate with personnel and schedules.
  - 2) Fence - cones, signage or barricades. Fence for blockage.
  - 3) Advise security and staff of work areas and times.
  
- B. Safety Equipment
  - 1) Maintain integrity of alarm system for all buildings:
    - (a) Cover alarm sensors with plastic and tape, no false alarms due to dust.
  - 2) Verify location of all fire extinguishers and blankets. Check charge and accesses.
  - 3) Maintain clear egress at all times (i.e. Construction material ladders, debris, etc.)
  - 4) Maintain ventilation and lighting (emergency lighting) for construction.
  - 5) First aid and emergency phone numbers on hand.
  - 6) All visitors must report to field office and will be advised to use eye protection and hard-hats.
  - 7) Construction personnel to use hard-hats.
  
- C. Use of lifts, scaffold and trash chute.
  - 1) Plan and location of trash chute and dumpsters.
  - 2) Barricade of chute area - signage and fence.
    - (a) Fence dumpster staging area.
  - 3) Protect railing at second floor - gate for trash chute.
  
- D. Regular safety meetings with subcontractors and personnel.
  - 1) Shirts with sleeves, appropriate dress for appearance and safety, no smoking or eating except in designated areas, loud noise or inappropriate language prohibited.
  - 2) Authorized personnel only to operate lifts and other machinery, use of spotter on the ground to insure safe placement and movement of lifts, etc.



- E. Protection from fumes, etc.
- 1) Any use of paint, solvents, cleaning agents, etc. will be coordinated to be used at times of least occupancy of building or at such times the fumes can disperse over the weekend to minimize discomfort to occupants.
  - 2) MSDS Sheets are available upon request and a copy is in company vehicles.
- F. Provide detail of isolation of areas.
- 1) Post signage for both pedestrians and construction personnel to avoid intrusion of unauthorized personnel in construction area and to keep construction personnel away from egress areas and office personnel.
  - 2) Provide passive gate at isolation areas to allow for emergency egress for construction personnel.

This agreement entered into as of the day and year first above written.

**SUBMITTED BY:**

**ACCEPTED BY:**

**THE CHRIS-TEL COMPANY**

**LEE COUNTY BOARD OF  
COMMISSIONERS**

\_\_\_\_\_  
Howard L. Wheeler Jr., President

\_\_\_\_\_