



PERFECT WEEK AT CAMP WA-KE HATCHEE - WEEK 1



Camper Daily's:

p.m. snack
Water bottle
Tennis shoes
(No Crocs)
Comfortable clothing
Sunscreen

Guardian Daily's:

Please make sure
your supplemental
form is completed
before the first day!

Photo ID required at
sign out

Camp Hours:

Camp Hours: 7:30 a.m. - 6 p.m.

**NO CAMP on July 4th.
Have a fun and safe holiday!**

Special Events:

Southern SnoBalls
(Every Monday - \$3, \$5, \$6)
Pool day on
Tuesday (Blue & Black) or
Wednesday (Green & Red)

Did you have fun
this week?
Scan this QR code
to let us know
how we did!



Guest Speakers:

Solid Waste and
Natural Resources

Reminders:

Wear your camp shirt
on the first day of
camp! (Monday)

Don't forget to pack a
swimsuit, towel,
change of clothes
and sunscreen for all
pool and water days



A parent or guardian is required to sign in and sign out each camper daily. Only persons who have previously been listed on the Supplemental Information Sheet will be permitted to sign for your child at pick up. Photo ID will be required. Changes must be submitted in writing.

WA-KE HATCHEE MIDDLE SCHOOL CAMP

WEEK 1

COLORS WEEK

Monday
June 10

9:00am- Morning
Announcements!



SNOW CONES AT 1 PM
(Please bring cash if
you would like to
purchase)



Tuesday
June 11

9:00am- Morning
Announcements!

11:00 am-3:00pm
Karl Draws Pool
(Blue and Black
Groups)

Bring swimsuit,
towel, change
of clothes and
sunscreen



Golisanos Card
making for
Children's Hospital

Wednesday
June 12

9:00am- Morning
Announcements!



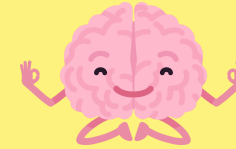
12:45pm-3:00pm
San Carlos Pool
(Green and Red
Groups)

Bring swimsuit,
towel, change of
clothes and
sunscreen



Thursday
June 13

9:00am- Morning
Announcements!



10:00am Yoga
and Mindfulness
with 4H

WEAR YOUR GROUP
COLOR!



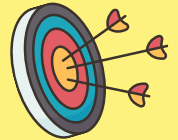
Friday
June 14

9:00am- Morning
Announcements!

10am
Solid Waste and
Natural Resources



1:00pm-3:00pm
Archery Practice



- Camp Hours: 7:30 a.m.- 6 p.m. | 9 a.m. Announcements
- Bring swimsuit, towel, change of clothes and sunscreen for Water days.
- Cash only for Snow cone days, \$3, \$5 & \$6.
- Calendars are subject to change



Middle School Camp Director:

Juliana Silva |

Jsilva@leegov.com

**Wa-Ke Hatchee Recreation
Center**

(239) 634-0141



PERFECT WEEK AT CAMP WA-KE HATCHEE - WEEK 2



Camper Daily's:

p.m. Snack
Water bottle
Tennis shoes
(No Crocs)
Comfortable clothing
Sunscreen

Guardian Daily's:

Photo ID required at
sign out

Camp Hours:

Camp Hours: 7:30 a.m. - 6 p.m.

**NO CAMP on July 4th.
Have a fun and safe holiday!**

Special Events:

Halloween in June!
(Thursday)
Dress up in your favorite
Halloween costume or be
creative and create your own!

Did you have fun
this week?
Scan this QR code
to let us know
how we did!



Reminders

Don't forget to pack a
swimsuit, towel,
change of clothes
and sunscreen for all
pool and water days

Southern SnoBalls
(Every Monday - \$3,
\$5, \$6)

Field Trips:

Tuesday : Pool day
(All groups)

Wednesday: Skyzone
and lunch at Lakes
Park



A parent or guardian is required to sign in and sign out each camper daily. Only persons who have previously been listed on the Supplemental Information Sheet will be permitted to sign for your child at pick up. Photo ID will be required. Changes must be submitted in writing.

WA-KE HATCHEE MIDDLE SCHOOL CAMP

WEEK 2

TROPICAL WEEK

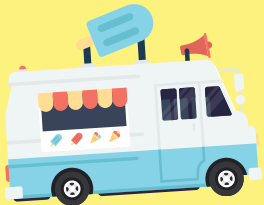
Monday
June 17

9:00am- Morning
Announcements!



SNOW CONES AT 1 PM

(Please bring cash if
you would like to
purchase)



Tuesday
June 18

9:00am- Morning
Announcements!

11:00 am-3:00pm
Karl Draws Pool
(All groups)

Bring swimsuit,
towel, change of
clothes and
sunscreen



Hula Hoop
Contest!



Wednesday
June 19



9:00am-12pm
SKYZONE



Lunch at Lakes
Park



Thursday
June 20

9:00am- Morning
Announcements!



TRICK
OR
TREAT



HALLOWEEN IN JUNE!

Dress up in your
favorite
Halloween
costume or be
creative and
create your own!

Friday
June 21

9:00am- Morning
Announcements!



ALL GROUPS
WATER DAY

National Selfie
Day!



- Camp Hours: 7:30 a.m.- 6 p.m. | 9 a.m. Announcements
- Bring swimsuit, towel, change of clothes and sunscreen for Water days.
- Cash only for Snow cone days, \$3, \$5 & \$6.
- Calendars are subject to change



Middle School Camp Director:

Juliana Silva |

Jsilva@leegov.com

**Wa-Ke Hatchee Recreation
Center**

(239) 634-0141



PERFECT WEEK AT CAMP WA-KE HATCHEE - WEEK 3



Camper Daily's:

p.m. Snack
Water bottle
Tennis shoes
(No Crocs)
Comfortable clothing
Sunscreen

Guardian Daily's:

Photo ID required at
sign out

Camp Hours:

Camp Hours: 7:30 a.m. - 6 p.m.

NO CAMP on July 4th.
Have a fun and safe holiday!

Special Events:

Southern SnoBalls
(Every Monday - \$3, \$5, \$6)
Pool day on Tuesday
(Groups green and red) or
Wednesday (Groups blue and
black)

Did you have fun
this week?
Scan this QR code
to let us know
how we did!



Reminders

Don't forget to pack a
swimsuit, towel,
change of clothes
and sunscreen for all
pool and water days

Field Trips:

Tuesday or
Wednesday: Pool
days

Thursday: Collier
Museum
Wear your camp
shirt!



A parent or guardian is required to sign in and sign out each camper daily. Only persons who have previously been listed on the Supplemental Information Sheet will be permitted to sign for your child at pick up. Photo ID will be required. Changes must be submitted in writing.

WA-KE HATCHEE MIDDLE SCHOOL CAMP

WEEK 3

STEAM WEEK

Monday
June 24

9:00am- Morning
Announcements!



SNOW CONES AT 1 PM

(Please bring cash if
you would like to
purchase)



SCIENCE

Tuesday
June 25

9:00am- Morning
Announcements!

11:00 am-3:00pm
Karl Drews Pool
(Green and red
groups)

Bring swimsuit,
towel, change of
clothes and
sunscreen



TECHNOLOGY

Wednesday
June 26

9:00am- Morning
Announcements!

12:45pm-3:00pm
San Carlos Pool
(Blue and Black
groups)

Bring swimsuit,
towel, change of
clothes and
sunscreen



ENGINEERING

Thursday
June 27

9:00am- Morning
Announcements!



10 am-12 pm
Collier Museum



ART

Friday
June 28

9:00am- Morning
Announcements!



1:00pm
All Camp
Scavenger Hunt

MATH

- Camp Hours: 7:30 a.m.- 6 p.m. | 9 a.m. Announcements
- Bring swimsuit, towel, change of clothes and sunscreen for Water days.
- Cash only for Snow cone days, \$3, \$5 & \$6.
- Calendars are subject to change



Middle School Camp Director:

Juliana Silva |

Jsilva@leegov.com

**Wa-Ke Hatchee Recreation
Center**

(239) 634-0141



PERFECT WEEK AT CAMP WA-KE HATCHEE - WEEK 3



Camper Daily's:

p.m. Snack
Water bottle
Tennis shoes
(No Crocs)
Comfortable
clothing
Sunscreen
Lunch

Guardian Daily's:

Photo ID required
at sign out

Camp Hours:

Camp Hours: 7:30 a.m. - 6 p.m.

**NO CAMP on July 4th.
Have a fun and safe holiday!**

Special Events:

Southern SnoBalls
(Every Monday - \$3, \$5, \$6)

Did you have fun
this week?
Scan this QR code
to let us know
how we did!



Reminders

Don't forget to pack a
swimsuit, towel,
change of clothes
and sunscreen for all
pool and water days

Field Trips:

Please wear your
camp shirts!
Tuesday:

Blue wolves and
Black Panthers - San
Carlos Pool

Thursday:
Green Sharks and
Red Eagles - Collier
Museum



A parent or guardian is required to sign in and sign out each camper daily. Only persons who have previously been listed on the Supplemental Information Sheet will be permitted to sign for your child at pick up. Photo ID will be required. Changes must be submitted in writing.

WA-KE HATCHEE MIDDLE SCHOOL CAMP

WEEK 3

STEAM WEEK

Monday
June 24

9:00am- Morning
Announcements!



SNOW CONES AT 1 PM

(Please bring cash if
you would like to
purchase)



SCIENCE

Tuesday
June 25

9:00am- Morning
Announcements!



WATER DAY

Bring swimsuit,
towel, change of
clothes and
sunscreen



TECHNOLOGY

Wednesday
June 26

9:00am- Morning
Announcements!



12:45pm-3:00pm

San Carlos Pool

Bring swimsuit,
towel, change of
clothes and
sunscreen
(Blue and Black
groups)



ENGINEERING

Thursday
June 27

9:00am- Morning
Announcements!



10 am-12 pm

Collier Museum

(Please arrive by
8:30 AM)



ART

Friday
June 28

9:00am- Morning
Announcements!



1:00pm
All Camp
Scavenger
Hunt

MATH

- Camp Hours: 7:30 a.m.- 6 p.m. | 9 a.m. Announcements
- Bring swimsuit, towel, change of clothes and sunscreen for Water days.
- Cash only for Snow cone days, \$3, \$5 & \$6.
- Calendars are subject to change



Middle School Camp Director:

Juliana Silva |

Jsilva@leegov.com

**Wa-Ke Hatchee Recreation
Center**

(239) 634-0141



PERFECT WEEK AT CAMP WA-KE HATCHEE - WEEK 4



Camper Daily's:

p.m. Snack
Water bottle
Tennis shoes
(No Crocs)
Comfortable clothing
Sunscreen
Lunch

Guardian Daily's:

Photo ID required at
sign out

Don't forget to pack a
swimsuit, towel,
change of clothes
and sunscreen for all
pool and water days

Camp Hours:

Camp Hours: 7:30 a.m. - 6 p.m.
**NO CAMP this Thursday,
July 4th.**
Have a fun and safe holiday!

Special Events:

Camp Family Cookout!
Family is invited to participate in this
fun event! We will have food trucks
for purchase!
Campers must stay with their groups
unless they are signed out

Did you have fun
this week?
Scan this QR code
to let us know
how we did!



Reminders

Southern SnoBalls
(Every Monday - \$3,
\$5, \$6)

Field Trips:

Six Mile Cypress
Slough Wet Walk:
Tuesday (Groups
Green and red)
Wednesday (Groups
blue and black)

Please arrive by 8 AM
and wear close toed
shoes and pants.
NO CROCS



A parent or guardian is required to sign in and sign out each camper daily. Only persons who have previously been listed on the Supplemental Information Sheet will be permitted to sign for your child at pick up. Photo ID will be required. Changes must be submitted in writing.

WA-KE HATCHEE MIDDLE SCHOOL CAMP

WEEK 4

PATRIOTIC WEEK

Monday
July 1

9:00am- Morning
Announcements!



SNOW CONES AT 1 PM

(Please bring cash if
you would like to
purchase)



Tuesday
July 2

8:30am-11:00am
Six Mile Cypress
Slough Wet Walk
(Green and red
groups)



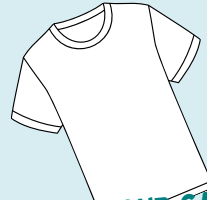
**WEAR YOUR CAMP
SHIRTS!**

LUNCH AT SIX MILE



Wednesday
July 3

8:30am-11:00am
Six Mile Cypress
Slough Wet Walk
(Blue and Black
groups)



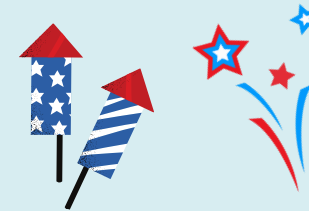
**WEAR YOUR CAMP
SHIRTS!**

LUNCH AT SIX MILE



Thursday
July 4

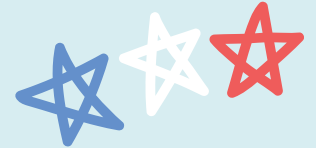
NO CAMP



**HAPPY 4TH
OF JULY**

Friday
July 5

Wear your
Red, White &
Blue



**CAMP COOKOUT
WITH FOOD TRUCKS!**

12 PM

**BRING YOUR
FRIENDS & FAMILY!**



- Camp Hours: 7:30 a.m.- 6 p.m. | 9 a.m. Announcements
- Bring swimsuit, towel, change of clothes and sunscreen for water days.
- Cash only for Snow cone days, \$3, \$5 & \$6.
- Calendars are subject to change



Middle School Camp Director:

Juliana Silva |

Jsilva@leegov.com

**Wa-Ke Hatchee Recreation
Center**

(239) 634-0141



PERFECT WEEK AT CAMP WA-KE HATCHEE - WEEK 5



Camper Daily's:

p.m. Snack
Water bottle
Tennis shoes
(No Crocs)
Comfortable clothing
Sunscreen
Lunch

Guardian Daily's:

Photo ID required at
sign out

Don't forget to pack a
swimsuit, towel,
change of clothes
and sunscreen for all
pool and water days

Camp Hours:

Camp Hours: 7:30 a.m. - 6 p.m.

Special Events:

Water Day on Tuesday!

Mighty Mussels Baseball Game
on Wednesday!

Did you have fun
this week?
Scan this QR code
to let us know
how we did!



Reminders

Wear your favorite pjs
all day on Friday

Wear your Camp
T-shirt to the Mighty
Mussels Baseball Game
on Wednesday!

Southern SnoBalls
(Every Monday - \$3, \$5,
\$6)

Guest Speaker:

Thursday: LCSO
Presentation and Ice
Cream (No cash is
needed)



A parent or guardian is required to sign in and sign out each camper daily. Only persons who have previously been listed on the Supplemental Information Sheet will be permitted to sign for your child at pick up. Photo ID will be required. Changes must be submitted in writing.

WA-KE HATCHEE MIDDLE SCHOOL CAMP

WEEK 5

AROUND THE WORLD WEEK

Monday
July 8

9:00am- Morning
Announcements!



SNOW CONES AT 1 PM

(Please bring cash if
you would like to
purchase)



Tuesday
July 9

9:00am- Morning
Announcements!



WATER DAY

Bring swimsuit,
towel, change of
clothes and
sunscreen



Wednesday
July 10

11 AM
MIGHTY MUSSELS
BASEBALL GAME



Thursday
July 11

9:00am- Morning
Announcements!



1:30pm LCSO
Presentation
and Ice Cream!
(No cash
needed)



Friday
July 12

Wear your
favorite
PJ'S

**PAJAMA
PARTY**

Day at the
movies!



- Camp Hours: 7:30 a.m.- 6 p.m. | 9 a.m. Announcements
- Bring swimsuit, towel, change of clothes and sunscreen for water days.
- Cash only for Snow cone days, \$3, \$5 & \$6.
- Calendars are subject to change



Middle School Camp Director:

Juliana Silva |

Jsilva@leegov.com

**Wa-Ke Hatchee Recreation
Center**

(239) 634-0141



PERFECT WEEK AT CAMP WA-KE HATCHEE - WEEK 6



Camper Daily's:

p.m. Snack
Water bottle
Tennis shoes
(No Crocs)
Comfortable clothing
Sunscreen
Lunch

Guardian Daily's:

Photo ID required at
sign out

Don't forget to pack a
swimsuit, towel,
change of clothes
and sunscreen for all
pool and water days

Camp Hours:

Camp Hours: 7:30 a.m. - 6 p.m.

Special Events:

Southern SnoBalls
(Every Monday - \$3, \$5, \$6)

Sunsplash on Wednesday!
Please wear your camp shirt and
arrive by 8:30 AM

Did you have fun
this week?
Scan this QR code
to let us know
how we did!



Reminders

Don't forget to pack a
swimsuit, towel,
change of clothes
and sunscreen for all
pool and water days

Wear your Favorite
Sports team t-shirt or
jersey!

Guest Speaker:

Tuesday: Mike
Hammond with the
Calusa Blueway



A parent or guardian is required to sign in and sign out each camper daily. Only persons who have previously been listed on the Supplemental Information Sheet will be permitted to sign for your child at pick up. Photo ID will be required. Changes must be submitted in writing.

WA-KE HATCHEE MIDDLE SCHOOL CAMP

WEEK 6

CAREER WEEK

Monday
July 15

9:00am- Morning
Announcements!



SNOW CONES AT 1 PM

(Please bring cash if
you would like to
purchase)



Tuesday
July 16

9:00am- Morning
Announcements!



10:00am
The Calusa
BlueWay
Presentation



Wednesday
July 17



9 AM

SUNSPASH!

Please bring a
swimsuit, towel,
change of
clothes and
sunscreen



**WEAR YOUR CAMP
SHIRTS!**

Thursday
July 18

9:00am- Morning
Announcements!



**Wear your
favorite sports
team t-shirt or
jersey!**



Friday
July 19

9:00am- Morning
Announcements!



Campers create
thank you cards for
essential workers in
their community!



- Camp Hours: 7:30 a.m.- 6 p.m. | 9 a.m. Announcements
- Bring swimsuit, towel, change of clothes and sunscreen for water days.
- Cash only for Snow cone days, \$3, \$5 & \$6.
- Calendars are subject to change



Middle School Camp Director:

Juliana Silva |

Jsilva@leegov.com

**Wa-Ke Hatchee Recreation
Center**

(239) 634-0141



PERFECT WEEK AT CAMP WA-KE HATCHEE - WEEK 7



Camper Daily's:

p.m. Snack
Water bottle
Tennis shoes
(No Crocs)
Comfortable clothing
Sunscreen
Lunch

Guardian Daily's:

Photo ID required at
sign out

Camp Hours:

Camp Hours: 7:30 a.m. - 6 p.m.

Special Events:

Southern SnoBalls
(Every Monday - \$3, \$5, \$6)
Christmas in July

Olympic Awards Community
Event - Please arrive by 12:45 PM

Did you have fun
this week?

Scan this QR code
to let us know
how we did!



Reminders

Wear red and green
for Christmas in July!

Don't forget to pack a
swimsuit, towel,
change of clothes
and sunscreen for all
pool and water days

Field Trips:

Wear your camp shirt!

Wednesday:

San Carlos Pool
(Green and Red
Groups)

Thursday:

Collier Museum
(Blue and Black Groups)



A parent or guardian is required to sign in and sign out each camper daily. Only persons who have previously been listed on the Supplemental Information Sheet will be permitted to sign for your child at pick up. Photo ID will be required. Changes must be submitted in writing.

WA-KE HATCHEE MIDDLE SCHOOL CAMP

WEEK 7

OLYMPICS WEEK

Monday
July 22

9:00am- Morning
Announcements!



**OLYMPIC
EVENTS**



SNOW CONES AT 1 PM

(Please bring cash if
you would like to
purchase)



Tuesday
July 23

9:00am- Morning
Announcements!



**OLYMPIC
EVENTS**



Wednesday
July 24

9:00am- Morning
Announcements!

**OLYMPIC
EVENTS**



12:45pm-3:00pm
San Carlos Pool

Please bring a
swimsuit, towel,
change of clothes
and sunscreen
(Green and Red
Groups)

AT THE
pool

Thursday
July 25

9:00am- Morning
Announcements!

**CHRISTMAS IN
JULY**



10am-12pm
**Collier
Museum**



Friday
July 26

9:00am- Morning
Announcements!



1 PM
**OLYMPIC
AWARDS!**

Community is
invited!



- Camp Hours: 7:30 a.m.- 6 p.m. | 9 a.m. Announcements
- Bring swimsuit, towel, change of clothes and sunscreen for water days.
- Cash only for Snow cone days, \$3, \$5 & \$6.
- Calendars are subject to change



Middle School Camp Director:

Juliana Silva |

Jsilva@leegov.com

**Wa-Ke Hatchee Recreation
Center**

(239) 634-0141



PERFECT WEEK AT CAMP WA-KE HATCHEE - WEEK 8



Camper Daily's:

p.m. Snack
Water bottle
Tennis shoes
(No Crocs)
Comfortable clothing
Sunscreen
Lunch

Guardian Daily's:

Photo ID required at
sign out

Camp Hours:

Camp Hours: 7:30 a.m. - 6 p.m.

Special Events:

Southern SnoBalls
(Every Monday - \$3, \$5, \$6)

Talent Show on Friday!

Did you have fun
this week?

Scan this QR code
to let us know
how we did!



Reminders

Bring a can to
support the Harry
Chapin Food Bank

Don't forget to pack a
swimsuit, towel,
change of clothes
and sunscreen for all
pool and water days

Guest Speaker:

Wednesday: LCDAS
Presentation
with Karen Frick



A parent or guardian is required to sign in and sign out each camper daily. Only persons who have previously been listed on the Supplemental Information Sheet will be permitted to sign for your child at pick up. Photo ID will be required. Changes must be submitted in writing.

WA-KE HATCHEE MIDDLE SCHOOL CAMP

WEEK 8

ENTERTAINMENT WEEK

Monday
July 29

9:00am- Morning
Announcements!



SNOW CONES AT 1 PM

(Please bring cash if
you would like to
purchase)



TALENT
SHOW
PRACTICE

*Show
your
Talent*

Tuesday
July 30

9:00am- Morning
Announcements!



TALENT SHOW
PRACTICE



Wednesday
July 31

9:00am- Morning
Announcements!



10 am
LCDAS
Presentation



TALENT
SHOW
PRACTICE

Thursday
August 1

9:00am- Morning
Announcements!

**Bring in a can
for the Harry
Chapin Food
Bank!**



TALENT
SHOW
PRACTICE



Friday
August 2

9:00am- Morning
Announcements!



1 PM

*Talent
Show*

- Camp Hours: 7:30 a.m.- 6 p.m. | 9 a.m. Announcements
- Bring swimsuit, towel, change of clothes and sunscreen for water days.
- Cash only for Snow cone days, \$3, \$5 & \$6.
- Calendars are subject to change



Middle School Camp Director:

Juliana Silva |

Jsilva@leegov.com

**Wa-Ke Hatchee Recreation
Center**

(239) 634-0141