



# PERFECT WEEK AT CAMP WA-KE HATCHEE - WEEK 1



## Camper Daily's:

p.m. snack  
Water bottle  
Tennis shoes  
(No Crocs)  
Comfortable clothing  
Sunscreen

## Guardian Daily's:

Please make sure  
your supplemental  
form is completed  
before the first day!

Photo ID required at  
sign out

## Camp Hours:

Camp Hours: 7:30 a.m. - 6 p.m.

**NO CAMP on July 4th.  
Have a fun and safe holiday!**

## Special Events:

Southern SnoBalls  
(Every Monday - \$3, \$5, \$6)

Water day on Wednesday!

Did you have fun  
this week?  
Scan this QR code  
to let us know  
how we did!



## Guest Speakers:

Solid Waste and  
Natural Resources

## Reminders:

Wear your camp shirt  
on the first day of  
camp! (Monday)

Don't forget to pack a  
swimsuit, towel,  
change of clothes  
and sunscreen for all  
pool and water days



A parent or guardian is required to sign in and sign out each camper daily. Only persons who have previously been listed on the Supplemental Information Sheet will be permitted to sign for your child at pick up. Photo ID will be required. Changes must be submitted in writing.

# WA-KE HATCHEE TRADITIONAL CAMP

## WEEK 1

### COLORS WEEK

**Monday**  
June 10

9:00am- Morning  
Announcements!



SNOW CONES 1pm  
(Please bring cash)

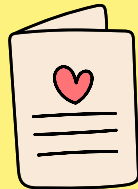


**Tuesday**  
June 11

9:00am- Morning  
Announcements!



Golisanos Card  
making for  
Children's Hospital



**Wednesday**  
June 12

9:00am- Morning  
Announcements!



ALL GROUPS  
WATER DAY



**Thursday**  
June 13

9:00am- Morning  
Announcements!



10am Yoga and  
Mindfulness with  
4H

WEAR YOUR GROUP  
COLOR!



**Friday**  
June 14

9:00am- Morning  
Announcements!



10:00am  
Solid Waste and  
Natural Resources



- Camp Hours: 7:30 a.m.- 6 p.m. | 9 a.m. Announcements
- Bring swimsuit, towel, change of clothes and sunscreen for Water days.
- Cash only for Snow cone days, \$3, \$5 & \$6.
- Calendars are subject to change



**Traditional Camp Director:**  
Yvette Sanchez |  
Ysanchez@leegov.com  
**Wa-Ke Hatchee Recreation  
Center**  
(239) 634-0141



# PERFECT WEEK AT CAMP WA-KE HATCHEE - WEEK 2



## Camper Daily's:

p.m. Snack  
Water bottle  
Tennis shoes  
(No Crocs)  
Comfortable clothing  
Sunscreen

## Guardian Daily's:

Photo ID required at  
sign out

## Camp Hours:

Camp Hours: 7:30 a.m. - 6 p.m.

**NO CAMP on July 4th.  
Have a fun and safe holiday!**

## Special Events:

Halloween in June!  
(Thursday)  
Dress up in your favorite  
Halloween costume or be  
creative and create your own!

Did you have fun  
this week?  
Scan this QR code  
to let us know  
how we did!



## Reminders

Don't forget to pack a  
swimsuit, towel,  
change of clothes  
and sunscreen for all  
pool and water days

Southern SnoBalls  
(Every Monday - \$3,  
\$5, \$6)

## Field Trips:

Wednesday: Skyzone  
and lunch at Lakes  
Park



A parent or guardian is required to sign in and sign out each camper daily. Only persons who have previously been listed on the Supplemental Information Sheet will be permitted to sign for your child at pick up. Photo ID will be required. Changes must be submitted in writing.

# WA-KE HATCHEE TRADITIONAL CAMP

## WEEK 2

### TROPICAL WEEK

**Monday**  
June 17

9:00am- Morning  
Announcements!



SNOW CONES 1pm  
(Please bring cash)



**Tuesday**  
June 18

9:00am- Morning  
Announcements!



ALL GROUPS  
WATER DAY



Hula Hoop Contest



**Wednesday**  
June 19

9:00am-12pm  
**SKY ZONE**  
(Wear your camp  
shirt)



Lunch at  
Lakes Park



**Thursday**  
June 20

9:00am- Morning  
Announcements!



**TRICK  
OR  
TREAT**



**Halloween in  
June!**

Wear your favorite  
costume or create  
your own!

**Friday**  
June 21

9:00am- Morning  
Announcements!



ALL GROUPS  
WATER DAY

National Selfie  
Day!



- Camp Hours: 7:30 a.m.- 6 p.m. | 9 a.m. Announcements
- Bring swimsuit, towel, change of clothes and sunscreen for Water days.
- Cash only for Snow cone days, \$3, \$5 & \$6.
- Calendars are subject to change



**Traditional Camp Director:**

Yvette Sanchez |

Ysanchez@leegov.com

**Wa-Ke Hatchee Recreation  
Center**

(239) 634-0141



# PERFECT WEEK AT CAMP WA-KE HATCHEE - WEEK 3



## Camper Daily's:

p.m. Snack  
Water bottle  
Tennis shoes  
(No Crocs)  
Comfortable clothing  
Sunscreen

## Guardian Daily's:

Photo ID required at  
sign out

## Camp Hours:

Camp Hours: 7:30 a.m. - 6 p.m.

**NO CAMP on July 4th.  
Have a fun and safe holiday!**

## Special Events:

Southern SnoBalls  
(Every Monday - \$3, \$5, \$6)

Water day on Tuesday!

Did you have fun  
this week?  
Scan this QR code  
to let us know  
how we did!



## Reminders

Don't forget to pack a  
swimsuit, towel,  
change of clothes  
and sunscreen for all  
pool and water days

## Guest Speaker

Butterfly Presentation  
with Matthew Rudd



A parent or guardian is required to sign in and sign out each camper daily. Only persons who have previously been listed on the Supplemental Information Sheet will be permitted to sign for your child at pick up. Photo ID will be required. Changes must be submitted in writing.

# WA-KE HATCHEE TRADITIONAL CAMP

## WEEK 3

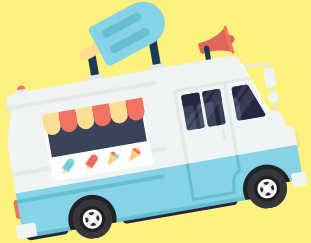
### STEAM WEEK

Monday  
June 24

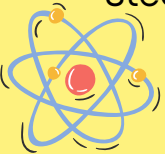
9:00am- Morning  
Announcements!



SNOW CONES 1pm  
(Please bring cash)



Science Day  
Steam Project



Tuesday  
June 25

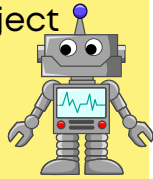
9:00am- Morning  
Announcements!



ALL GROUPS  
WATER DAY



Technology Day  
Steam Project



Wednesday  
June 26

9:00am- Morning  
Announcements!

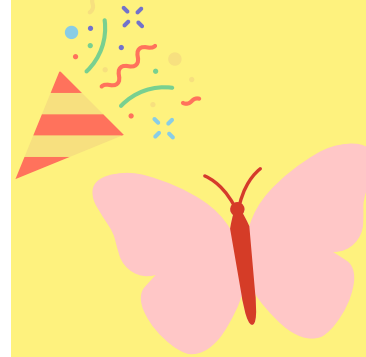


Engineering Day  
Steam Project



Thursday  
June 27

9:00am- Morning  
Announcements!



Matthew Rudd  
Butterfly  
Presentation 10am

Art Day  
Steam Project

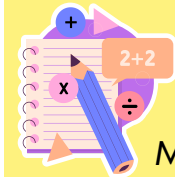


Friday  
June 28

9:00am- Morning  
Announcements!



1:00pm  
All Summer Camp  
Scavenger Hunt



Math Day  
Steam Project

- Camp Hours: 7:30 a.m.- 6 p.m. | 9 a.m. Announcements
- Bring swimsuit, towel, change of clothes and sunscreen for Water days.
- Cash only for Snow cone days, \$3, \$5 & \$6.
- Calendars are subject to change



**Traditional Camp Director:**

Yvette Sanchez |

Ysanchez@leegov.com

**Wa-Ke Hatchee Recreation  
Center**

(239) 634-0141



# PERFECT WEEK AT CAMP WA-KE HATCHEE - WEEK 4



## Camper Daily's:

p.m. Snack  
Water bottle  
Tennis shoes  
(No Crocs)  
Comfortable clothing  
Sunscreen

## Guardian Daily's:

Photo ID required at  
sign out

## Camp Hours:

Camp Hours: 7:30 a.m. - 6 p.m.  
**NO CAMP this Thursday  
July 4th.**  
**Have a fun and safe holiday!**

## Special Events:

Camp Family Cookout!  
Family is invited to participate in  
this fun event! Please sign up to  
bring an item.

Did you have fun  
this week?  
Scan this QR code  
to let us know  
how we did!



## Reminders

Don't forget to pack a  
swimsuit, towel,  
change of clothes  
and sunscreen for all  
pool and water days

Southern SnoBalls  
(Every Monday - \$3,  
\$5, \$6)

## Field Trips:

Tuesday and  
Wednesday: Six Mile  
Cypress Slough Wet  
Walk



A parent or guardian is required to sign in and sign out each camper daily. Only persons who have previously been listed on the Supplemental Information Sheet will be permitted to sign for your child at pick up. Photo ID will be required. Changes must be submitted in writing.

# WA-KE HATCHEE TRADITIONAL CAMP

## WEEK 4

### PATRIOTIC WEEK

**Monday**  
July 1

9:00am- Morning  
Announcements!



SNOW CONES 1pm  
(Please Bring Cash)



**Tuesday**  
July 2

9:00am- Morning  
Announcements!



Wear your  
Red, White  
and Blue



**Wednesday**  
July 3

9:00am- Morning  
Announcements!

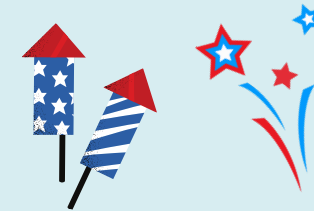


Wear your  
Red, White  
and Blue



**Thursday**  
July 4

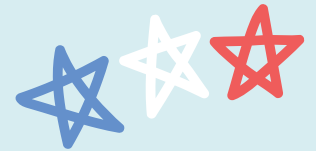
**NO CAMP**



**HAPPY 4TH  
OF JULY**

**Friday**  
July 5

Wear your  
Red, White  
and Blue



**BRING YOUR  
FAMILY TO  
THE  
COOKOUT!  
WE'LL HAVE  
FOOD TRUCKS**

- Camp Hours: 7:30 a.m.- 6 p.m. | 9 a.m. Announcements
- Bring swimsuit, towel, change of clothes and sunscreen for Water days.
- Cash only for Snow cone days, \$3, \$5 & \$6.
- Calendars are subject to change



**Traditional Camp Director:**  
Yvette Sanchez |  
Ysanchez@leegov.com

**Wa-Ke Hatchee Recreation  
Center**

(239) 634-0141





# PERFECT WEEK AT CAMP WA-KE HATCHEE - WEEK 5



## Camper Daily's:

p.m. Snack  
Water bottle  
Tennis shoes  
(No Crocs)  
Comfortable clothing  
Sunscreen

## Guardian Daily's:

Photo ID required at  
sign out

Don't forget to pack a  
swimsuit, towel,  
change of clothes  
and sunscreen for all  
pool and water days

## Camp Hours:

Camp Hours: 7:30 a.m. - 6 p.m.

## Special Events:

All Group water Day on Tuesday

Did you have fun  
this week?  
Scan this QR code  
to let us know  
how we did!



## Reminders

Wear your favorite  
pjs all day on Friday

Southern SnoBalls  
(Every Monday - \$3,  
\$5, \$6)

## Guest Speaker:

LCISO Presentation  
and Ice Cream (No  
cash is needed)



A parent or guardian is required to sign in and sign out each camper daily. Only persons who have previously been listed on the Supplemental Information Sheet will be permitted to sign for your child at pick up. Photo ID will be required. Changes must be submitted in writing.

# WA-KE HATCHEE TRADITIONAL CAMP

## WEEK 5

### AROUND THE WORLD WEEK

**Monday**  
July 8

9:00am- Morning  
Announcements!



SNOW CONES 1pm  
(Please bring cash)



**Tuesday**  
July 9

9:00am- Morning  
Announcements!



ALL GROUPS  
WATER DAY



**Wednesday**  
July 10

9:00am- Morning  
Announcements!



**Thursday**  
July 11

9:00am- Morning  
Announcements!



1:30pm LCSO  
Presentation  
and Ice Cream!  
(No cash  
needed)



Bring in a can  
for the Harry  
Chapin Food  
Bank!



**Friday**  
July 12

Wear your  
favorite  
PJ'S

PAJAMA  
PARTY

Day at the  
movies!



- Camp Hours: 7:30 a.m.- 6 p.m. | 9 a.m. Announcements
- Bring swimsuit, towel, change of clothes and sunscreen for Water days.
- Cash only for Snow cone days, \$3, \$5 & \$6.
- Calendars are subject to change



**Traditional Camp Director:**

Yvette Sanchez |  
Ysanchez@leegov.com

**Wa-Ke Hatchee Recreation  
Center**

(239) 634-0141



# PERFECT WEEK AT CAMP WA-KE HATCHEE - WEEK 6



## Camper Daily's:

p.m. Snack  
Water bottle  
Tennis shoes  
(No Crocs)  
Comfortable clothing  
Sunscreen

## Guardian Daily's:

Photo ID required at  
sign out

Don't forget to pack a  
swimsuit, towel,  
change of clothes  
and sunscreen for all  
pool and water days

## Camp Hours:

Camp Hours: 7:30 a.m. - 6 p.m.

## Special Events:

Southern SnoBalls  
(Every Monday - \$3, \$5, \$6)

Sunsplash on Wednesday!  
Please wear your camp shirt

Did you have fun  
this week?  
Scan this QR code  
to let us know  
how we did!



## Reminders

Don't forget to pack a  
swimsuit, towel,  
change of clothes  
and sunscreen for all  
pool and water days

Wear your Favorite  
Sports team t-shirt or  
jersey

## Guest Speaker:

Mike Hammond with  
the Calusa Blueway



A parent or guardian is required to sign in and sign out each camper daily. Only persons who have previously been listed on the Supplemental Information Sheet will be permitted to sign for your child at pick up. Photo ID will be required. Changes must be submitted in writing.

# WA-KE HATCHEE TRADITIONAL CAMP

## WEEK 6

### CAREER WEEK

**Monday**  
July 15

9:00am- Morning  
Announcements!



SNOW CONES 1pm  
(Please bring cash)



**Tuesday**  
July 16

9:00am- Morning  
Announcements!



10:00am  
Calusa Blue  
Way  
Presentation



**Wednesday**  
July 17



#### SUNSPASH!

Please bring a  
swimsuit, towel,  
change of  
clothes and  
sunscreen



**WEAR YOUR CAMP  
SHIRT!**

**Thursday**  
July 18

9:00am- Morning  
Announcements!



**Wear your  
favorite sports  
team t-shirt or  
jersey!**



**Friday**  
July 19

9:00am- Morning  
Announcements!



Campers create  
thank you cards for  
essential workers in  
their community!



- Camp Hours: 7:30 a.m.- 6 p.m. | 9 a.m. Announcements
- Bring swimsuit, towel, change of clothes and sunscreen for Water days.
- Cash only for Snow cone days, \$3, \$5 & \$6.
- Calendars are subject to change



**Traditional Camp Director:**  
Yvette Sanchez |  
Ysanchez@leegov.com  
**Wa-Ke Hatchee Recreation  
Center**  
(239) 634-0141



# PERFECT WEEK AT CAMP WA-KE HATCHEE - WEEK 7



## Camper Daily's:

p.m. Snack  
Water bottle  
Tennis shoes  
(No Crocs)  
Comfortable clothing  
Sunscreen

## Guardian Daily's:

Photo ID required at  
sign out

## Camp Hours:

Camp Hours: 7:30 a.m. - 6 p.m.

## Special Events:

Southern SnoBalls  
(Every Monday - \$3, \$5, \$6)  
Christmas in July

Olympic Awards Community  
Event

Did you have fun  
this week?  
Scan this QR code  
to let us know  
how we did!



## Reminders

Wear red and green  
for Christmas in July!

Don't forget to pack a  
swimsuit, towel,  
change of clothes  
and sunscreen for all  
pool and water days

## Guest Speaker

Iona McGregor  
Fire Department



A parent or guardian is required to sign in and sign out each camper daily. Only persons who have previously been listed on the Supplemental Information Sheet will be permitted to sign for your child at pick up. Photo ID will be required. Changes must be submitted in writing.

# WA-KE HATCHEE TRADITIONAL CAMP

## WEEK 7

### OLYMPICS WEEK

Monday  
July 22

9:00am- Morning  
Announcements!



OLYMPICS  
WEEK

SNOW CONES 1pm  
(Please bring cash)



Tuesday  
July 23

9:00am- Morning  
Announcements!



OLYMPICS  
WEEK



Wednesday  
July 24

9:00am- Morning  
Announcements!



OLYMPIC  
EVENTS



ALL GROUPS  
WATER DAY



Thursday  
July 25

9:00am- Morning  
Announcements!



CHRISTMAS IN  
JULY



1pm Iona McGregor  
Fire Department



Friday  
July 26

9:00am- Morning  
Announcements!



OLYMPIC  
GAMES AND  
AWARDS



- Camp Hours: 7:30 a.m.- 6 p.m. | 9 a.m. Announcements
- Bring swimsuit, towel, change of clothes and sunscreen for Water days.
- Cash only for Snow cone days, \$3, \$5 & \$6.
- Calendars are subject to change



**Traditional Camp Director:**

Yvette Sanchez |

Ysanchez@leegov.com

**Wa-Ke Hatchee Recreation  
Center**

(239) 634-0141



# PERFECT WEEK AT CAMP WA-KE HATCHEE - WEEK 8



## Camper Daily's:

p.m. Snack  
Water bottle  
Tennis shoes  
(No Crocs)  
Comfortable clothing  
Sunscreen

## Guardian Daily's:

Photo ID required at  
sign out

## Camp Hours:

Camp Hours: 7:30 a.m. - 6 p.m.

## Special Events:

Southern SnoBalls  
(Every Monday - \$3, \$5, \$6)

Talent Show on Friday!

Did you have fun  
this week?  
Scan this QR code  
to let us know  
how we did!



## Reminders

Bring a can to  
support the Harry  
Chapin Food Bank

Don't forget to pack a  
swimsuit, towel,  
change of clothes  
and sunscreen for all  
pool and water days

## Guest Speaker:

LCDAS Presentation  
with Karen Frick



A parent or guardian is required to sign in and sign out each camper daily. Only persons who have previously been listed on the Supplemental Information Sheet will be permitted to sign for your child at pick up. Photo ID will be required. Changes must be submitted in writing.

# WA-KE HATCHEE TRADITIONAL CAMP

## WEEK 8

### ENTERTAINMENT WEEK

Monday  
July 29

9:00am- Morning  
Announcements!



SNOW CONES 1pm  
(Please bring cash)



TALENT  
SHOW  
PRACTICE *Show your Talent*

Tuesday  
July 30

9:00am- Morning  
Announcements!



TALENT  
SHOW  
PRACTICE



Wednesday  
July 31

9:00am- Morning  
Announcements!



LCDAS GUEST  
SPEAKER



TALENT  
SHOW  
PRACTICE

Thursday  
August 1

9:00am- Morning  
Announcements!

Bring in a can  
for the Harry  
Chapin Food  
Bank!



TALENT  
SHOW  
PRACTICE



Friday  
August 2

9:00am- Morning  
Announcements!



Talent  
Show

- Camp Hours: 7:30 a.m.- 6 p.m. | 9 a.m. Announcements
- Bring swimsuit, towel, change of clothes and sunscreen for Water days.
- Cash only for Snow cone days, \$3, \$5 & \$6.
- Calendars are subject to change



**Traditional Camp Director:**  
Yvette Sanchez |  
Ysanchez@leegov.com  
**Wa-Ke Hatchee Recreation  
Center**  
(239) 634-0141