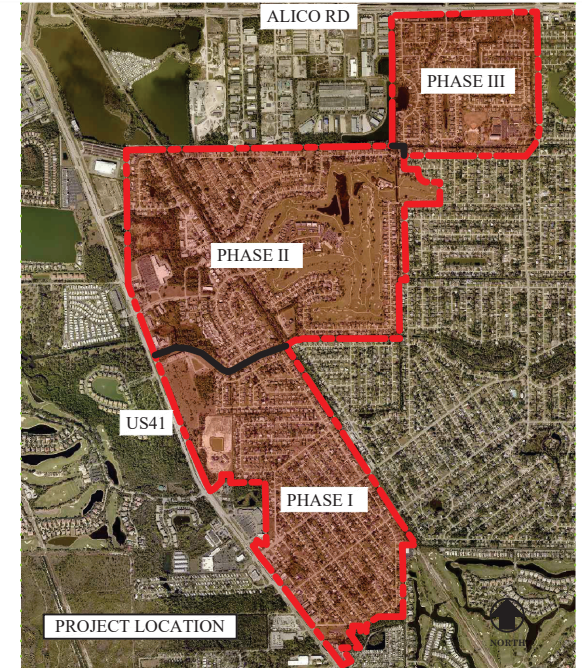




LEE COUNTY  
SOUTHWEST  
FLORIDA

DEPARTMENT  
of  
TRANSPORTATION  
OPERATIONS DIVISION



SAN CARLOS PARK PROJECT:

DRAINAGE IMPROVEMENT

SIDEWALK AND PIPE REPLACEMENT BREAKDOWN

**Addendum 1**



LEE COUNTY  
SOUTHWEST  
FLORIDA

DEPARTMENT  
of  
TRANSPORTATION  
OPERATIONS DIVISION

Revision	Date	Description	By

DESIGNED BY:	JRB
DRAWN BY:	JRB
APPROVED:	EG
JOB CODE:	
SCALE:	XXX XXX

SAN CARLOS DRAINAGE PROJECT

SAN CARLOS PARK

DATE:	FILE NAME:	DRAWING NUMBER 1 of 3
4/02/2020		

## SIDEWALK REPLACEMENT LIST

Adress	Quantity SF	Quantity SY	Notes
7001 Constitution Blvd	140	16	Midblock
7021 Constitution Blvd	60	7	Corner of Constitution and Constitution
7237 Constitution Cir	100	11	Corner of Constitution and Buchanan
7248 Collidge Rd	50	6	Corner of Constitution and Collidge
7270 Baragan Rd	60	7	Corner of Baragan and Constitution
18218 Louise Dr	60	7	Corner of Louise and Constitution
18248 Iris Road	50	6	Corner Iris & Constitution Cir
18255 Iris Rd	50	6	Corner Iris & Constitution Cir
18170 Iris Rd	170	19	Midblock
18186 Iris rd	135	15	Midblock
18194 Iris Rd	85	9	Midblock
18202 Iris Rd	135	15	Midblock
18218 Iris Rd	160	18	Midblock
7365 Jonas Rd	450	50	Midblock
7366 Jonas Rd	60	7	Corner Iris & Jonas
18274 Iris Rd	100	11	Corner Iris & Jonas
18376 Iris Rd	60	7	Corner Iris & Myrtle
7350 Myrtle	60	7	Corner Iris & Myrtle
7349 Captiva	85	9	Corner Iris & Captiva
18412 Iris Rd	85	9	Corner Iris & Captiva
18412 Iris Rd	100	11	Midblock
18420 Iris Rd	85	9	Midblock
18432 Iris Rd	110	12	Midblock
18440 Iris Rd	30	3	Midblock
18448 Iris Rd	60	7	Midblock
7543 Sanibel Blvd	175	19	Midblock
7543 Sanibel Blvd	165	18	Corner Iris & Sanibel
19017 Tamiami Trail	60	7	Located on Sanibel Blvd Side
7327 Sanibel Blvd	60	7	
7339 Sanibel Blvd	66	7	
19021 Tamiami Trail	60	7	Located on Sanibel Side & Corn Int.
7320 Sanibel Blvd	60	7	
7320 Sanibel Blvd	65	7	Midblock
7328 Sanibel Blvd	225	25	Corner Sanibel & Birch
7543 Sanibel Blvd	95	11	Corner Sanibel & Iris
18493 Iris Rd	65	7	Corner Iris & Sanibel - Adjust Storm Inlet
18625 Holly Rd	65	7	Corner San Carlos & Holly
7576 San Carlos Blvd	200	22	Midblock
7514 San Carlos Blvd	40	4	Midblock
19041 Dogwood Rd	45	5	Corner Dogwood & San Carlos
7498 San Carlos Blvd	45	5	Corner Dogwood & San Carlos
7492 San Carlos Blvd	40	4	Corner of Coconut & San Carlos
19068 Coconut Rd	40	4	Corner of Coconut & San Carlos
7472 San Carlos Blvd	40	4	Corner of San Carlos & Birch
7480 San Carlos Blvd	40	4	Corner of San Carlos & Birch
7590 Winged Foot Dr	140	16	Midblock
7586 Winged Foot Dr	220	24	Midblock
7548 Winged Foot Dr	30	3	Midblock
7548 Winged Foot Dr	60	7	Midblock
7522 Winged Foot Dr	140	16	Midblock
7520 Winged Foot Dr	30	3	Midblock
7328 Pebble Beach Rd	30	5	Midblock
7288 Pebble Beach	50	6	Midblock
7272 Pebble Beach	220	24	Midblock

## Pipe Replacement ERCP 14" x 23"

Address	Length (Ft)
19125 Coconut	30
7471 Hickory	30
19005 Flamingo	30
19006 Flamingo	20
19034 Evergreen	30
19041 Dogwood	40
7549 San Carlos	30
18612 Granium	40
18635 Birch	60
18560 Flamingo	30
18568 Evergreen	70
18588 Evergreen	70
18604 Evergreen	50
18512 Holly	30
18528 Holly	40
18552 Geranium	35
18596 Geranium	30
18486 Marco	35
18486 Marco	80
18483 Marco	50
18502 Marco	30
<i>7541 San Carlos</i>	<i>40</i>
<i>17410 Dumont</i>	<i>40</i>
<i>7278 Captiva</i>	<i>30</i>
<i>19003 Flamingo</i>	<i>30</i>
<i>19104 Dogwood</i>	<i>30</i>
<i>18568 Flamingo</i>	<i>30</i>
<i>18486 Geranium</i>	<i>30</i>
<i>18499 Geranium</i>	<i>40</i>