

**CONTRACT PLANS COMPONENTS**

ROADWAY PLANS  
SIGNING AND PAVEMENT MARKING PLANS  
SIGNALIZATION AND LIGHTING PLANS

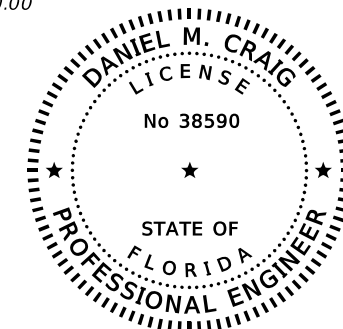
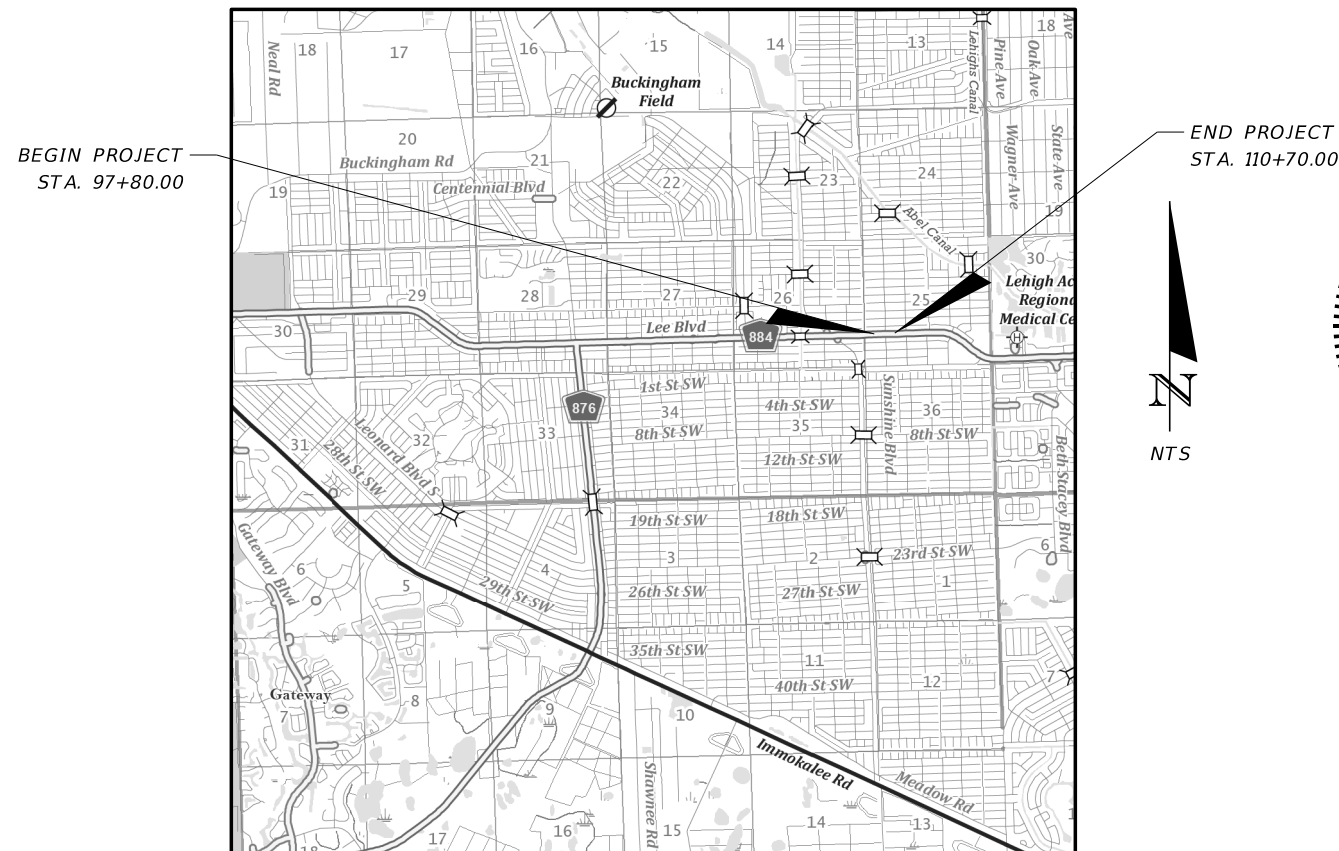
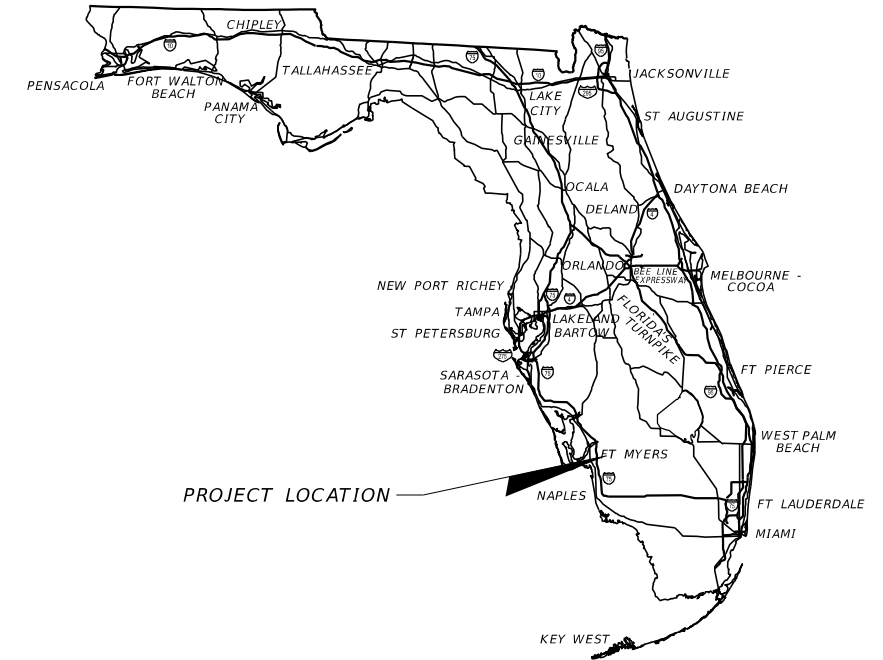
A DETAILED INDEX APPEARS ON THE  
KEY SHEET OF EACH COMPONENT

**INDEX OF ROADWAY PLANS**

SHEET NO.	SHEET DESCRIPTION
1	KEY SHEET
2 - 3	TYPICAL SECTIONS
4	GENERAL NOTES
5 - 8	ROADWAY PLAN
9	DRIVEWAY CROSS SECTIONS
10 - 12	SUMMARY OF QUANTITIES

**LEE COUNTY**  
**DEPARTMENT OF TRANSPORTATION**  
**CONTRACT PLANS**

**INTERSECTION IMPROVEMENTS**  
**LEE BOULEVARD AT JOAN AVENUE N.**



THIS ITEM HAS BEEN DIGITALLY  
SIGNED AND SEALED BY

ON THE DATE ADJACENT TO THE SEAL

PRINTED COPIES OF THIS DOCUMENT ARE  
NOT CONSIDERED SIGNED AND SEALED  
AND THE SIGNATURE MUST BE VERIFIED  
ON ANY ELECTRONIC COPIES.

**ROADWAY PLANS**  
**ENGINEER OF RECORD:**

**Stantec**  
Stantec  
1412 Jackson St., Suite 3  
Fort Myers, FL 33901  
Ph. 239-347-5512  
Daniel M. Craig, P.E. #38590

**LEE COUNTY PROJECT MANAGER:**

RYAN KIRSCH

**GOVERNING STANDARD PLANS:**  
Florida Department of Transportation, FY 2023-24 Standard Plans for Road and Bridge Construction and applicable Interim Revisions (IRs).

Standard Plans for Road Construction and associated IRs are available at the following website: <http://www.fdot.gov/design/standardplans>

APPLICABLE IRs: IR - -

Standard Plans for Bridge Construction are included in the Structures Plans Component

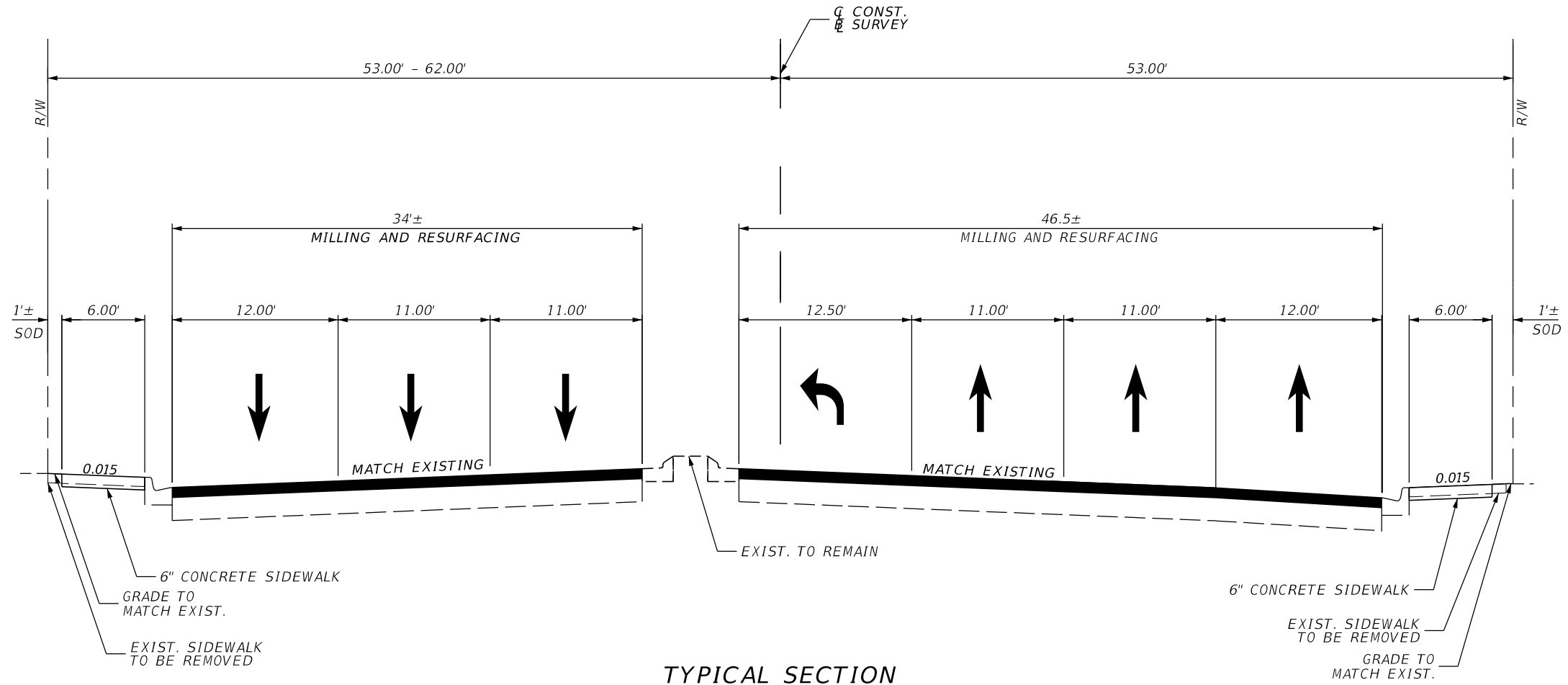
**GOVERNING STANDARD SPECIFICATIONS:**  
Florida Department of Transportation, FY 2023-24 Standard Specifications for Road and Bridge Construction at the following website: <http://www.fdot.gov/programmanagement/Implemented/SpecBooks>

November 2023

COUNTY CIP NO.	FISCAL YEAR	SHEET NO.
21-00011	24	1

11/21/2023 6:53:11 AM C:\Worksets\FDOT\0000400502\roadway\KEY5RD01.dgn jowinter

THE OFFICIAL RECORD OF THIS SHEET IS THE ELECTRONIC FILE DIGITALLY SIGNED AND SEALED UNDER RULE 61G15-23.004, F.A.C.



**TYPICAL SECTION  
LEE BOULEVARD  
STA. 97+80.00 TO STA. 110+70.00**

**MILLING**

MILL EXISTING ASPHALT  
PAVEMENT FOR AVG. DEPTH (1½")

**RESURFACING**

FRICTION COURSE FC-12.5 (TRAFFIC C) (1½") (PG 76-22)

**NOTE:**

1. WESTBOUND TO SOUTHBOUND LEFT TURN ON LEE BLVD. IS NOT SHOWN HERE.
2. PAVEMENT MILLING AND RESURFACING SHALL TAKE PLACE AFTER ALL UNDERGROUND WORK IS COMPLETED.
3. CONTRACTOR TO TACK ALL MILLED SURFACES PRIOR TO PLACEMENT OF THE FRICTION COURSE.
4. SEE ROADWAY PLAN SHEETS FOR MILLING AND RESURFACING LIMITS.

11/21/2023 6:53:15 AM Jowinter  
C:\worksets\FDOT\000040502\roadway\TYPSRD01.dgn

THE OFFICIAL RECORD OF THIS SHEET IS THE ELECTRONIC FILE DIGITALLY SIGNED AND SEALED UNDER RULE 61G15-23.004, F.A.C.

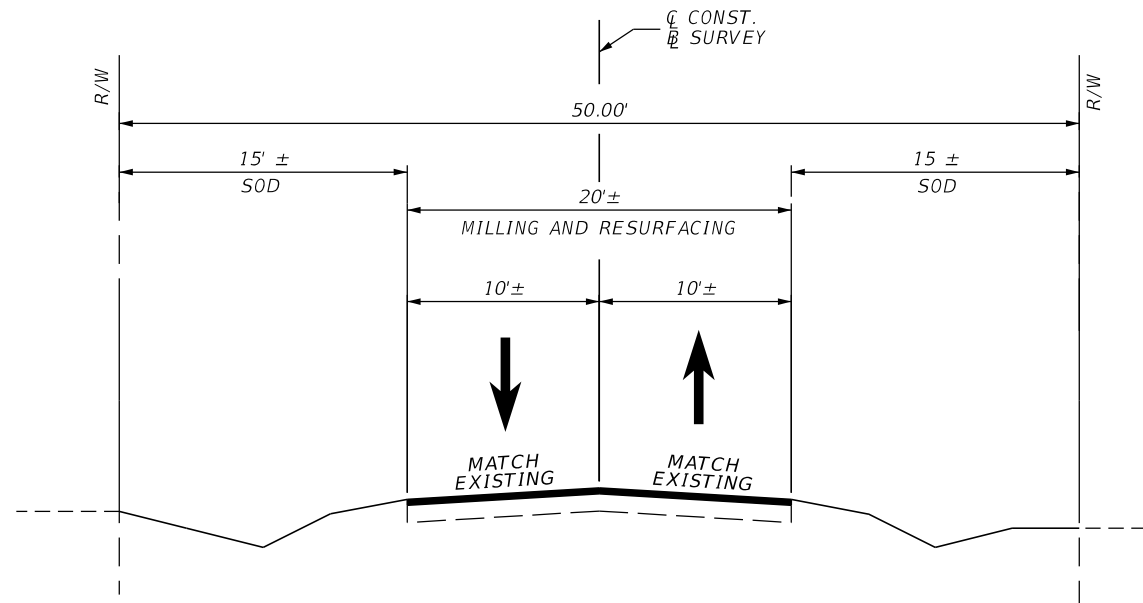
REVISIONS			
DATE	DESCRIPTION	DATE	DESCRIPTION

Stantec  
1412 Jackson St., Suite 3  
Fort Myers, FL 33901  
Ph. 239-347-5512  
Daniel M. Craig, P.E. #38590

LEE COUNTY DEPARTMENT OF TRANSPORTATION		
ROAD NAME	COUNTY	COUNTY CIP NO.
LEE BLVD	21-00011	21-00011

**TYPICAL SECTION**

SHEET NO.
2



**TYPICAL SECTION  
JOAN AVE. N.  
STA. 299+66.00 TO STA. 299+86.00  
STA. 300+06.00 TO STA. 302+61.53  
STA. 200+43.83 TO STA. 201+00.00**

**MILLING**  
MILL EXISTING ASPHALT  
PAVEMENT FOR AVG. DEPTH (1")

**RESURFACING**  
FRICTION COURSE FC-12.5 (TRAFFIC C) (1½") (PG 76-22)

**STA. 299+25.00 TO STA. 299+66.00  
STA. 299+86.00 TO STA. 300+06.00**

**RECONSTRUCTION**  
TYPE B STABILIZATION 12" LBR 40  
OPTIONAL BASE GROUP 6  
TYPE FC-12.5 FRICTION COURSE (TRAFFIC C) (1½") (PG 76-22)

**NOTE:**

1. PAVEMENT MILLING AND RESURFACING SHALL TAKE PLACE AFTER ALL UNDERGROUND WORK IS COMPLETED.
2. CONTRACTOR TO TACK ALL MILLED SURFACES PRIOR TO PLACEMENT OF THE FRICTION COURSE.
3. ANY BASE MATERIAL EXPOSED BY MILLING OPERATIONS SHALL BE REWORKED, RECOMPACTED AS REQUIRED AND PRIMED PRIOR TO RESURFACING.
4. SEE ROADWAY PLAN SHEETS FOR MILLING AND RESURFACING LIMITS.
5. SEE PLAN SHEETS FOR LIMITS OF SWALE REGRADING.

11/21/2023 6:53:16 AM jowinter C:\worksets\FDOT\000040502\roadway\TYP5RD01.dgn

THE OFFICIAL RECORD OF THIS SHEET IS THE ELECTRONIC FILE DIGITALLY SIGNED AND SEALED UNDER RULE 61G15-23.004, F.A.C.

REVISIONS				Stantec 1412 Jackson St., Suite 3 Fort Myers, FL 33901 Ph. 239-347-5512 Daniel M. Craig, P.E. #38590	LEE COUNTY DEPARTMENT OF TRANSPORTATION			<b>TYPICAL SECTION</b>	SHEET NO.
DATE	DESCRIPTION	DATE	DESCRIPTION		ROAD NAME	COUNTY	COUNTY CIP NO.		3
					LEE BLVD	21-00011	N/A		

GENERAL NOTES

1. BENCHMARK ELEVATIONS SHOWN ON THE PLANS ARE NORTH AMERICAN VERTICAL DATUM OF 1988 (NAVD 88) HORIZONTAL DATUM SHOWN ON THE PLANS ARE NAD83 FLORIDA STATE PLANE WEST ZONE.
2. ALL SURVEY INFORMATION WAS OBTAINED FROM A LICENSED FLORIDA PROFESSIONAL SURVEYOR AND MAPPER AND UTILIZED AS SUPPORTING DATA IN THE PRODUCTION OF DESIGN PLANS. THE PROFESSIONAL SURVEYOR AND MAPPER OF RECORD IS:  
SCOTT URQUHART, P.S.M.  
P.S.M. NO: 6524  
T2 UTILITY ENGINEERS  
5670 ZIP DRIVE  
FORT MYERS, FL 33905
3. THE LOCATION(S) OF THE UTILITIES SHOWN IN THE PLANS (INCLUDING THOSE DESIGNATED VV, VH, AND VVH) ARE BASED ON LIMITED INVESTIGATION TECHNIQUES AND SHOULD BE CONSIDERED APPROXIMATE ONLY. THE VERIFIED LOCATIONS/ELEVATIONS APPLY ONLY AT THE POINTS SHOWN. INTERPOLATIONS BETWEEN THESE POINTS HAVE NOT BEEN VERIFIED.
4. FOR SIDEWALK CONSTRUCTION REFER TO INDEX NO. 522-001. ALL CONCRETE PLACED WITHIN LEE COUNTY'S R/W SHALL BE A MINIMUM OF 6"
5. FOR CURB RAMP CONSTRUCTION REFER TO INDEX NO. 522-002
6. FOR DRIVEWAY CONSTRUCTION REFER TO INDEX NO. 522-003
7. ANY CURBING DAMAGED AS A RESULT OF THE MILLING AND RESURFACING OPERATIONS SHALL BE REMOVED AND REPLACED BY THE CONTRACTOR AT NO ADDITIONAL COST TO LEE COUNTY.
8. THE CONTRACTOR SHALL TACK ALL MILLED SURFACES PRIOR TO PLACEMENT OF THE FRICTION COURSE. TACK COAT IS INCIDENTAL TO THE COST OF THE FRICTION COURSE AND NO COMPENSATION WILL BE MADE.
9. ANY BASE MATERIAL EXPOSED BY MILLING OPERATIONS SHALL BE REWORKED, RECOMPACTED AS REQUIRED AND PRIMED PRIOR TO THE RESURFACING. PRIME COAT IS INCIDENTAL TO THE COST OF THE REWORKING OF BASE AND NO ADDITIONAL COMPENSATION WILL BE MADE. ESTIMATED QUANTITY FOR REWORKING BASE PROVIDED IN THE SUMMARY IS CONSISTENT WITH THE JOAN AVE N. AREA. REWORKING OF BASE IS TO BE USED AT THE DIRECTION OF THE ENGINEER AND LEE COUNTY.
10. CONTRACTOR TO CONFIRM NEW DRIVEWAY & CURB LIMITS WITH ENGINEER/LEE COUNTY IN THE FIELD PRIOR TO THE EXISTING DRIVEWAY & CURB REMOVAL.
11. CONCRETE PAVEMENT REMOVAL FOR SIDEWALK AND CURBING SHALL EXTEND TO THE NEAREST JOINT.
12. CONTRACTOR SHALL CONFIRM MANHOLE COVER SIZE PRIOR TO ORDERING. MANHOLE COVERS SHALL BE TYPE X, STAMPED WITH THE WORDING "STORM", AND PLACED FLUSH WITH THE FINISHED GRADE.
13. THERE WILL BE NO PAVEMENT MARKING ERADICATION PERMITTED AFTER THE FINAL ASPHALT COURSE IS PLACED. ANY EXISTING ROADWAYS THAT HAVE TEMPORARY STRIPING ERADICATED SHALL HAVE THE FULL WIDTH OF THE EXISTING TOP PAVEMENT COURSE MILLED AND RESURFACED PRIOR TO FINAL ACCEPTANCE.
14. ALL CROSSWALK RAMPS ADA DETECTABLE WARNING TILES (TRUNCATED PADS) SHALL BE WET-SET
15. ALL PIPE MATERIAL FOR STORM SEWER SHALL CONSIST OF STEEL REINFORCED CONCRETE PIPE IN ACCORDANCE WITH SECTION 449 AND SHALL BE A MINIMUM OF CLASS III OR HE-III.
16. CONTRACTOR IS REQUIRED TO OBTAIN A LCDOT ROW PERMIT PRIOR TO THE COMMENCEMENT OF CONSTRUCTION.

UTILITY OWNERS:

BILL MCCLOUD CENTURYLINK 1325 BLAIRSTONE RD RM 113 TALLAHASSEE, FL 32301 PH 850-599-1444	LINA MARIA QUINTERO, PE SEVERN TRENT ENVIRO SERVICES 9841 BERNWOOD PLACE DR #120 FT MYERS, FL 33966 PH 727-858-2396	TOM BAILEY LEE COUNTY ELECTRIC CO-OP 4980 BAYLINE DR N FORT MYERS, FL 33917 PH 239-656-2414	JOAN DOMNING TECO PEOPLES GAS-FT MYERS 8416 PALM RIVER RD TAMPA, FL 33619 PH 813-275-3783
JOSH DAVIS COMCAST 12600 WESTLINKS DR FORT MYERS, FL 33913 PH 239-253-7642	CHINA ABRAMS LEE COUNTY SIGNAL P.O. DRAWER 2238 FT. MYERS, FL 33902-2238 PH 239-533-9500	JOAN DOMNING TECO PEOPLES GAS-FT MYERS 8416 PALM RIVER RD TAMPA, FL 33619 PH 813-275-3783	PAUL ARNETT FLORIDA GOVERNMENT UTILITY AUTHORITY (FGUA) DEVELOP. SERVICES COORDINATOR PH 407-629-6900

TEMPORARY TRAFFIC CONTROL PLAN NOTES

1. THE CONTRACTOR SHALL PROVIDE THE LABOR, EQUIPMENT AND MATERIAL NECESSARY TO PREPARE AND IMPLEMENT A COMPLETE TEMPORARY TRAFFIC CONTROL PLAN (TTC PLAN) PER THE REQUIREMENTS IN THE CONTRACT DOCUMENTS TO FACILITATE THE CONSTRUCTION OF THE PROJECT.
2. THE CONTRACTOR SHALL SUBMIT A DETAILED TTC PLAN THAT HAS BEEN SIGNED AND SEALED BY A PROFESSIONAL ENGINEER REGISTERED IN THE STATE OF FLORIDA. THE TTC PLAN SHALL CONFORM TO THE JANUARY 2023 FDOT STANDARD SPECIFICATIONS, THE STANDARD PLANS FOR ROAD AND BRIDGE CONSTRUCTION FY2022-23 AND THE MUTCD.
3. THE CONTRACTOR SHALL MAINTAIN SAFE ACCESS FOR PEDESTRIANS, CROSSWALKS, AND BICYCLISTS DURING CONSTRUCTION.
4. THE CONTRACTOR IS RESPONSIBLE FOR MAINTAINING POSITIVE DRAINAGE THROUGHOUT CONSTRUCTION SO AS TO NOT ALLOW THE ACCUMULATION OF WATER ON THE TRAVEL WAY. THE TEMPORARY DRAINAGE MEASURES SHALL BE SHOWN IN THE TTC PLAN.
5. THE CONTRACTOR SHALL PROVIDE A CREW, ON CALL 24 HOURS PER DAY TO BE RESPONSIBLE TO ERECT, INSTALL, RELOCATE, MAINTAIN AND REMOVE TRAFFIC CONTROL DEVICES, SIGNING, BARRIERS AND PAVEMENT MARKINGS AS NECESSARY THROUGHOUT THE PROJECT AREA. SAID CREW SHALL RESPOND WITHIN 2 HOURS OF NOTIFICATION BY THE COUNTY.
6. LANE CLOSURES REQUIRE PRIOR APPROVAL FROM LEE COUNTY.
7. ALL TRAFFIC LANES MUST BE KEPT OPEN TO TRAFFIC FROM 6:00 A.M. TO 9:00 A.M. AND FROM 4:00 P.M. TO 7:00 P.M., UNLESS OTHERWISE DIRECTED BY THE LEE COUNTY DIRECTOR OF TRANSPORTATION OR DESIGNEE. DURING PEAK SEASON (THANKSGIVING - EASTER) DAYTIME LANE CLOSURES WILL NOT BE PERMITTED ON LEE BLVD. DURING THIS TIME PERIOD ALL LANE CLOSURES WILL BE ALLOWED TO COMMENCE AFTER 7:00 P.M. AND ALL LANES RE-OPENED AT 6:00 A.M. LANE CLOSURES MAY BE DONE ON WEEKENDS OR DURING DAYTIME HOURS WITH PRIOR APPROVAL OF THE LEE COUNTY DIRECTOR OF TRANSPORTATION OR DESIGN.
8. AT THE DISCRETION OF THE LEE COUNTY DIRECTOR OF TRANSPORTATION OR DESIGNEE, ALL TEMPORARY LANE CLOSURES CAUSING EXTENDED TRAFFIC CONGESTION (5-MINUTE DELAY) MUST BE OPENED UNTIL TRAFFIC HAS RETURNED TO AN ACCEPTABLE FLOW AS DETERMINED BY THE LEE COUNTY DIRECTOR OF TRANSPORTATION OR DESIGNEE.
9. THE COUNTY RESERVES THE RIGHT TO REJECT ANY TTC PLAN. OBTAIN THE ENGINEER'S WRITTEN APPROVAL BEFORE BEGINNING WORK USING A TTC PLAN. THE ENGINEER'S WRITTEN APPROVAL IS REQUIRED FOR ALL MODIFICATIONS TO THE TTC PLAN. THE ENGINEER WILL ONLY ALLOW CHANGES TO THE TTC PLAN IN AN EMERGENCY WITHOUT THE PROPER DOCUMENTATION.

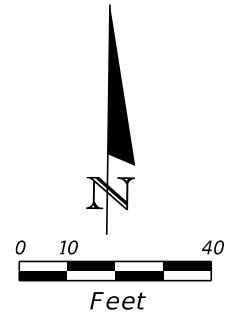
CONTROL POINT TABLE

POINT	NORTHING	EASTING	LATITUDE	LONGITUDE	DESCRIPTION	ELEVATION
100	830096.39'	762093.25'	N 26°37'01.2978"	W 81°40'32.8237"	SET 5/8" IR&C "T2 CONT. PT. LB 8336"	25.42'
101	830107.43'	762154.07'	N 26°37'01.4056"	W 81°40'32.1533"	SET 5/8" IR&C "T2 CONT. PT. LB 8336"	25.67'
102	830237.35'	762125.12'	N 26°37'02.6930"	W 81°40'32.4686"	SET 5/8" IR&C "T2 CONT. PT. LB 8336"	25.74'
103	830227.39'	762057.19'	N 26°37'02.5961"	W 81°40'33.2173"	SET 5/8" IR&C "T2 CONT. PT. LB 8336"	26.27'
105	830120.65'	762375.30'	N 26°37'01.5310"	W 81°40'29.7152"	SET N-D "T2 CONT. PT. LB 8336"	25.70'
106	830242.63'	762379.84'	N 26°37'02.7389"	W 81°40'29.6618"	SET N-D "T2 CONT. PT. LB 8336"	25.24'
107	830220.77'	761905.41'	N 26°37'02.5343"	W 81°40'34.8900"	SET N-D "T2 CONT. PT. LB 8336"	25.61'
108	830114.76'	761865.04'	N 26°37'01.4855"	W 81°40'35.3378"	SET N-D "T2 CONT. PT. LB 8336"	25.69'
110	830231.68'	762765.73'	N 26°37'02.6207"	W 81°40'25.4101"	SET N-D "T2 CONT. PT. LB 8336"	26.56'
111	830229.42'	762575.04'	N 26°37'02.6032"	W 81°40'27.5113"	SET N-D "T2 CONT. PT. LB 8336"	26.07'
112	830216.79'	761656.36'	N 26°37'02.5011"	W 81°40'37.6342"	SET N-D "T2 CONT. PT. LB 8336"	25.69'
113	830213.54'	761434.48'	N 26°37'02.4746"	W 81°40'40.0791"	SET N-D "T2 CONT. PT. LB 8336"	26.40'
114	830109.20'	761429.46'	N 26°37'01.4413"	W 81°40'40.1374"	SET N-D "T2 CONT. PT. LB 8336"	26.13'

11/21/2023 6:53:21 AM jowinter  
C:\Worksets\FDOT\0000400502\Roadway\GMTRD01.dgn

THE OFFICIAL RECORD OF THIS SHEET IS THE ELECTRONIC FILE DIGITALLY SIGNED AND SEALED UNDER RULE 61G15-23.004, F.A.C.

REVISIONS				Stantec 1412 Jackson St., Suite 3 Fort Myers, FL 33901 Ph. 239-347-5512 Daniel M. Craig, P.E. #38590	LEE COUNTY DEPARTMENT OF TRANSPORTATION			GENERAL NOTES	SHEET NO.
DATE	DESCRIPTION	DATE	DESCRIPTION		ROAD NAME	COUNTY	COUNTY CIP NO.		
					LEE BLVD.	LEE	21-00011		4



LOTS 9 & 14 & THE  
EAST 1/2 OF LOTS 6 & 15 &  
THE WEST 1/2 OF LOTS 8 & 13  
BLOCK 20, UNIT 3  
LEHIGH ACRES  
P.B. 15, PG. 70  
INST. # 2008000159218

BEGIN PROJECT  
BEGIN CONSTRUCTION  
STA. 97+80.00

STA. 97+00.00  
OFF. = 0.00' RT.  
X = 761365.15'  
Y = 830160.27'

6" CONCRETE SIDEWALK/DRIVEWAY  
 MILLING AND RESURFACING

REMOVE EXIST. SIDEWALK  
REPLACE W/  
6' CONCRETE SIDEWALK

CONCRETE DRIVEWAY  
INDEX NO. 522-003

REMOVE & REPLACE 99.4 LF±  
TYPE F C&G & DROP CURB  
INDEX NO. 520-001

CATCH BASIN  
GRATE EL. = 25.81'  
STRUCTURE FULL OF WATER  
COULD NOT GET INVERTS  
BOTTOM OF STRUCTURE EL. = 16.06'

+13.21  
53.00' LT.  
+08.38  
52.04' LT.

DRAINAGE MANHOLE  
RIM EL. = 24.92'  
NE INV. EL. = 20.37' (15" RCP)  
E INV. EL. = 20.54' (16" RCP)  
S INV. EL. = 19.53' (24" RCP)  
W INV. EL. = 20.46' (15" RCP)  
BOTTOM OF STRUCTURE EL. = 18.80'

+85.14  
53.00' LT.  
+79.79  
53.00' LT.

+90.28  
52.02' LT.

CATCH BASIN  
GRATE EL. = 24.37'  
SW INV. EL. = 20.81' (15" RCP)  
BOTTOM OF STRUCTURE EL. = 20.27'

DRAINAGE MANHOLE  
RIM EL. = 25.49'  
W INV. EL. = 20.61' (15" RCP)  
BOTTOM OF STRUCTURE EL. = 20.19'

+80.00  
52.04' LT.

GRASS

GRASS

GRASS

GRASS

MATCH EXIST.  
PAVT. & SIDEWALK  
(TYP.) ALL APPROACHES

LEE BLVD. REPLACE MH COVER  
W/ TYPE X

BEGIN C&G  
+04.50  
44.03' LT.

+03.84  
44.02' LT.

REPLACE MH COVER  
W/ TYPE X

REPLACE MH COVER  
W/ TYPE X

97

98

99

100

101

N89°11'36"E

+80.00  
9.39' RT.

GRASS

EOP & CURBING

REPLACE MH  
COVER W/ TYPE X

+80.00  
51.52' RT.

GRASS

REPLACE MH COVER  
W/ TYPE X

DRAINAGE MANHOLE  
RIM EL. = 25.97'  
STRUCTURE FULL OF WATER  
COULD NOT GET INVERTS  
BOTTOM OF STRUCTURE EL. = 16.57'

CATCH BASIN  
GRATE EL. = 25.08'  
STRUCTURE FULL OF WATER  
COULD NOT GET INVERTS  
BOTTOM OF STRUCTURE EL. = 16.5'

REMOVE EXIST. SIDEWALK  
REPLACE W/  
6' CONCRETE SIDEWALK

EXIST. C & G  
TO REMAIN UNLESS  
OTHERWISE NOTED (TYP.)

CONTRACTOR TO REPAIR/PATCH  
TOP OF DRAINAGE STRUCTURE.  
REMOVE CONCRETE AS  
REQUIRED TO FIX SURFACE  
CRACKING WITH A UNIFORM  
SURFACE TO MATCH THE  
ADJACENT SIDEWALK.  
CONTRACTOR SHALL SUBMIT A  
REPAIR PROCEDURE FOR APPROVAL.  
MATERIALS SHALL BE IN  
ACCORDANCE WITH SECTION 930  
OF THE STD. SPECIFICATIONS.

SIDEWALK TO BE  
FLUSH WITH ADJACENT  
DRAINAGE STRUCTURE  
(TYP.)

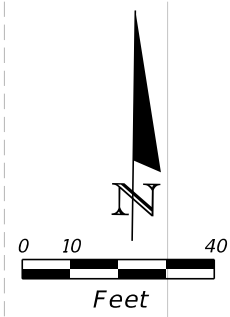
LOTS 1 THRU 9 &  
LOTS 14 THRU 22  
BLOCK 25, UNIT 4  
LEHIGH ACRES  
P.B. 15, PG. 70  
INST. # 2007000032564

MATCHLINE STA. 101+60.00

11/21/2023 6:53:30 AM jowinter  
C:\Worksets\FDOT\0000400502\roadway\PLAN\RD01.dgn

THE OFFICIAL RECORD OF THIS SHEET IS THE ELECTRONIC FILE DIGITALLY SIGNED AND SEALED UNDER RULE 61G15-23.004, F.A.C.

REVISIONS				Stantec 1412 Jackson St., Suite 3 Fort Myers, FL 33901 Ph. 239-347-5512 Daniel M. Craig, P.E. #38590	LEE COUNTY DEPARTMENT OF TRANSPORTATION			PLAN	SHEET NO.  5
DATE	DESCRIPTION	DATE	DESCRIPTION		ROAD NAME	COUNTY	COUNTY CIP NO.		
					LEE BLVD	LEE	21-00011		



LOTS 9, 10, 11 & 12 & THE EAST 1/2 OF LOTS 8 & 13  
BLOCK 20, UNIT 3  
LEHIGH ACRES  
P.B. 15, PG. 70  
INST. # 2015000274536

LOTS 1 & 20  
BLOCK 24, UNIT 3  
LEHIGH ACRES  
P.B. 15, PG. 70  
O.R. 3957, PG. 2240

LOTS 2, 19 & THE WEST 1/2 OF LOTS 3 & 18  
BLOCK 24, UNIT 3  
LEHIGH ACRES  
P.B. 15, PG. 70  
O.R. 2661, PG. 1867

NON-EXCLUSIVE INGRE  
O.R. 3765, PG.

LOTS 10 & 13  
BLOCK 25, UNIT 4  
LEHIGH ACRES  
P.B. 15, PG. 70  
O.R. 2467, PG. 3676

LOTS 12 & 13  
BLOCK 25, UNIT 4  
LEHIGH ACRES  
P.B. 15, PG. 70  
O.R. 1945, PG. 3493

LOTS 1, 2, 19 & 20  
BLOCK 29, UNIT 4  
LEHIGH ACRES  
P.B. 15, PG. 70  
INST. # 2018000099293

LOTS 3 & 18  
BLOCK 29, UNIT 4  
LEHIGH ACRES  
P.B. 15, PG. 70  
INST. # 2020000112932

MATCHLINE STA. 101+60.00

MATCHLINE STA. 107+20.00

MATCHLINE STA. 301+30.00

- 6" CONCRETE SIDEWALK/DRIVEWAY
- MILLING AND RESURFACING
- ASPHALT REMOVAL (CLEARING & GRUBBING)

REVISIONS			
DATE	DESCRIPTION	DATE	DESCRIPTION

Stantec  
1412 Jackson St., Suite 3  
Fort Myers, FL 33901  
Ph. 239-347-5512  
Daniel M. Craig, P.E. #38590

LEE COUNTY DEPARTMENT OF TRANSPORTATION		
ROAD NAME	COUNTY	COUNTY CIP NO.
LEE BLVD	LEE	21-00011

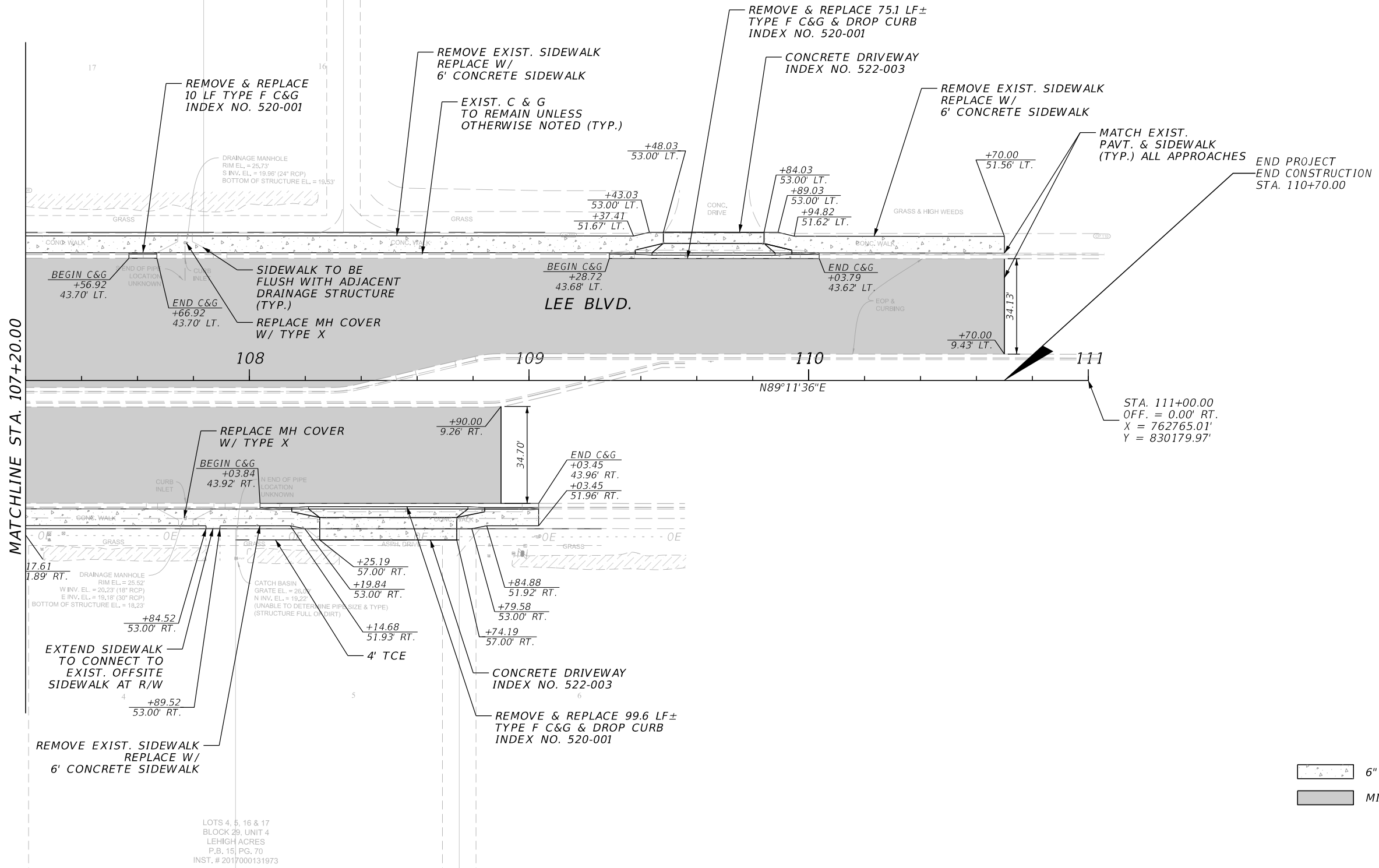
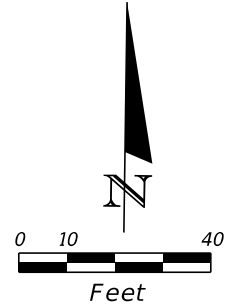
PLAN

SHEET NO.  
6

11/21/2023 6:53:31 AM jowinter  
C:\Work\sets\FDOT\0000400502\roadway\PLAN\RD01.dgn

THE OFFICIAL RECORD OF THIS SHEET IS THE ELECTRONIC FILE DIGITALLY SIGNED AND SEALED UNDER RULE 61G15-23.004, F.A.C.

LOTS 4, 17 & THE EAST 1/2  
OF LOTS 3 & 18 &  
A PORTION OF LOTS 5 & 16  
BLOCK 24, UNIT 3  
LEHIGH ACRES  
P.B. 15, PG. 70  
O.R. 3759, PG. 2120



MATCHLINE STA. 107+20.00

STA. 111+00.00  
OFF. = 0.00' RT.  
X = 762765.01'  
Y = 830179.97'

- 6" CONCRETE SIDEWALK/DRIVEWAY
- MILLING AND RESURFACING

LOTS 4, 5, 16 & 17  
BLOCK 29, UNIT 4  
LEHIGH ACRES  
P.B. 15, PG. 70  
INST. # 2017000131973

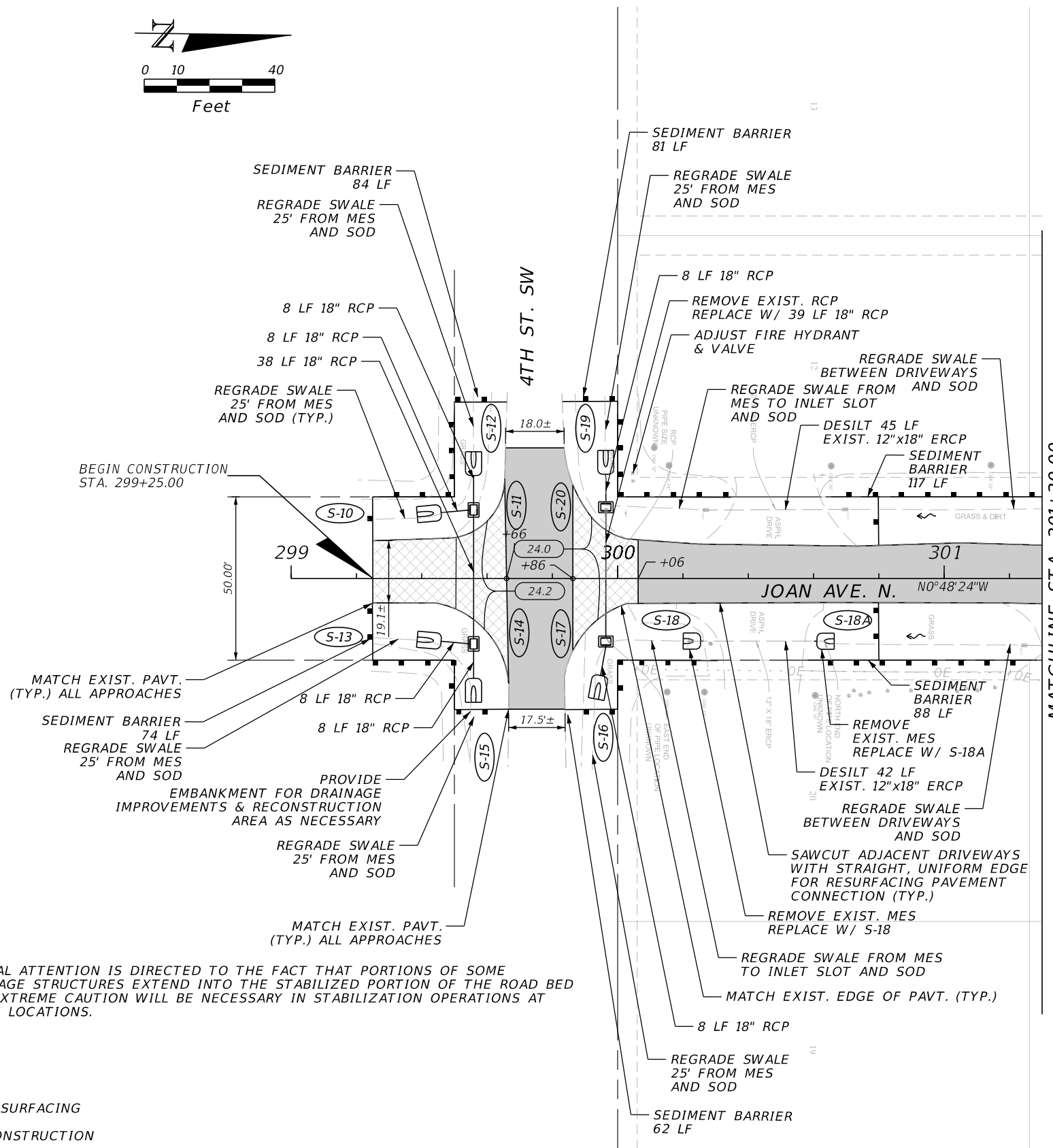
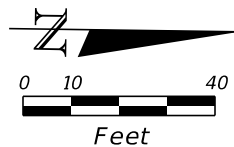
11/21/2023 6:53:32 AM jowinter C:\work\sets\FDOT\0000400502\roadway\PLAN\RD01.dgn

THE OFFICIAL RECORD OF THIS SHEET IS THE ELECTRONIC FILE DIGITALLY SIGNED AND SEALED UNDER RULE 61G15-23.004, F.A.C.

REVISIONS				Stantec 1412 Jackson St., Suite 3 Fort Myers, FL 33901 Ph. 239-347-5512 Daniel M. Craig, P.E. #38590	LEE COUNTY DEPARTMENT OF TRANSPORTATION			PLAN	SHEET NO.
DATE	DESCRIPTION	DATE	DESCRIPTION		ROAD NAME	COUNTY	COUNTY CIP NO.		
					LEE BLVD	LEE	21-00011		

**DRAINAGE STRUCTURES**

- S-10  
STA. 299+43.64, 20.02' LT  
CONST. 18" MES 1:4  
INDEX NO. 430-021  
FL. = 21.10
- S-11  
STA. 299+55.88, 21.00' LT  
CONST. DBI TYPE C  
INDEX NO. 425-052  
GRATE EL. = 24.00  
FL. = 21.10
- S-12  
STA. 299+55.88, 33.83' LT  
CONST. 18" MES 1:4  
INDEX NO. 430-021  
FL. = 21.10
- S-13  
STA. 299+43.64, 19.02 RT  
CONST. 18" MES 1:4  
INDEX NO. 430-021  
FL. = 21.20
- S-14  
STA. 299+55.88, 20.00' RT  
CONST. DBI TYPE C  
INDEX NO. 425-052  
GRATE EL. = 24.00  
FL. = 21.20
- S-15  
STA. 299+55.88, 32.83' RT  
CONST. 18" MES 1:4  
INDEX NO. 430-021  
FL. = 21.20
- S-16  
STA. 299+94.35, 31.95' RT  
CONST. 18" MES 1:4  
INDEX NO. 430-021  
FL. = 21.20
- S-17  
STA. 299+96.40, 19.30' RT  
CONST. DBI TYPE C  
W/ SLOT  
INDEX NO. 425-052  
GRATE EL. = 23.80  
SLOT EL. = 23.40  
FL. = 21.20
- S-18  
STA. 300+23.13, 19.15' RT  
CONST. 12"x18" MES 1:4  
INDEX NO. 430-021  
FL. = MATCH EXIST. (23.46)
- S-18A  
STA. 300+63.34, 19.19 RT  
CONST. 12"x18" MES 1:4  
INDEX NO. 430-021  
FL. MATCH EXIST.
- S-18B  
STA. 301+63.65, 20.85 RT  
CONST. 12"x18" MES 1:4  
INDEX NO. 430-021  
FL. MATCH EXIST.
- S-19  
STA. 299+96.40, 34.22' LT  
CONST. 18" MES 1:4  
INDEX NO. 430-021  
FL. = 21.10
- S-20  
STA. 299+96.40, 21.85' LT  
CONST. DBI TYPE C  
W/ SLOT  
INDEX NO. 425-052  
GRATE EL. = 23.60  
SLOT EL. = 23.10  
FL. = 21.10



**NOTE:**  
SPECIAL ATTENTION IS DIRECTED TO THE FACT THAT PORTIONS OF SOME DRAINAGE STRUCTURES EXTEND INTO THE STABILIZED PORTION OF THE ROAD BED AND EXTREME CAUTION WILL BE NECESSARY IN STABILIZATION OPERATIONS AT THOSE LOCATIONS.

- MILLING AND RESURFACING
- PAVEMENT RECONSTRUCTION

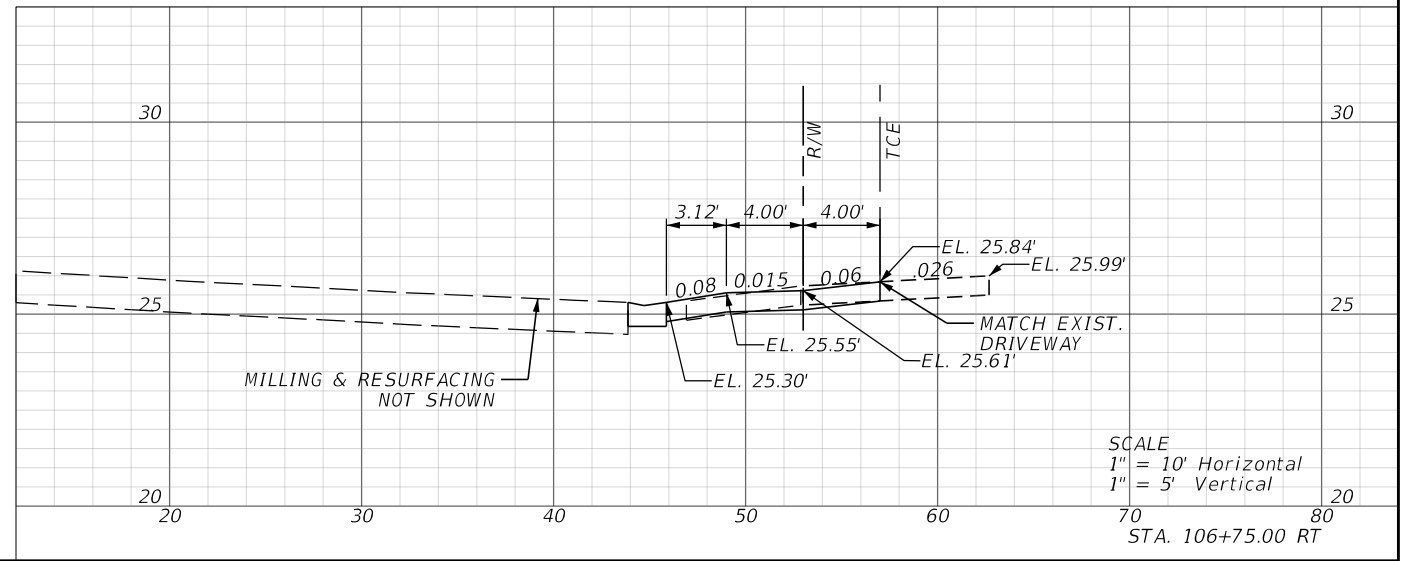
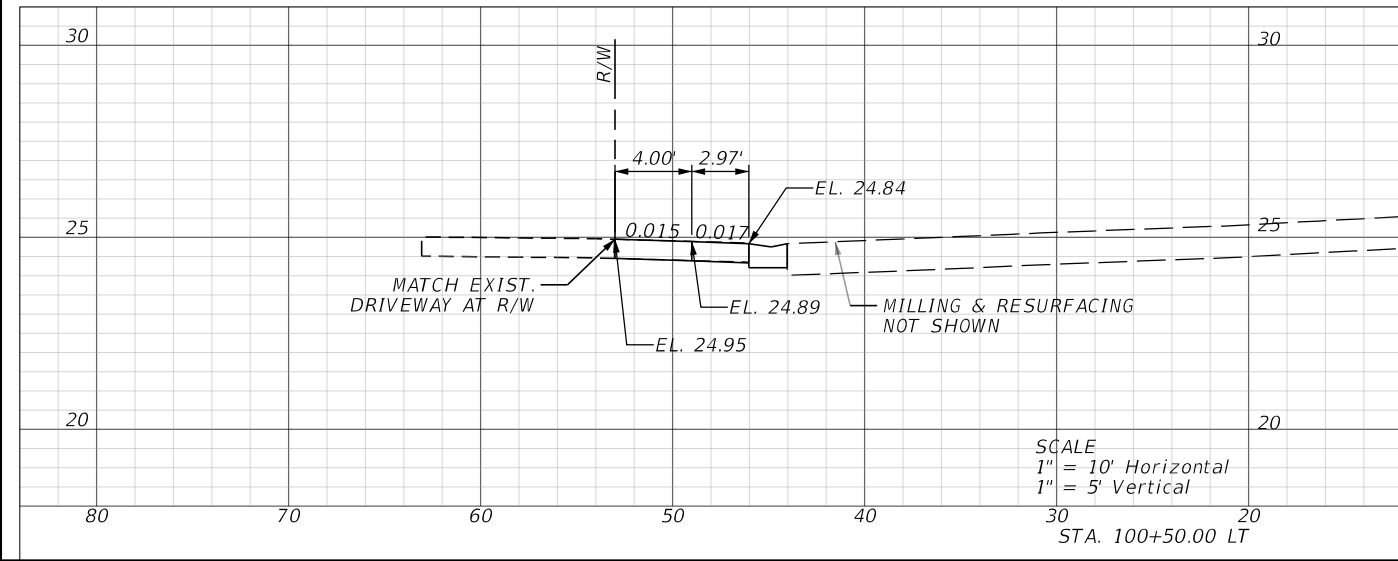
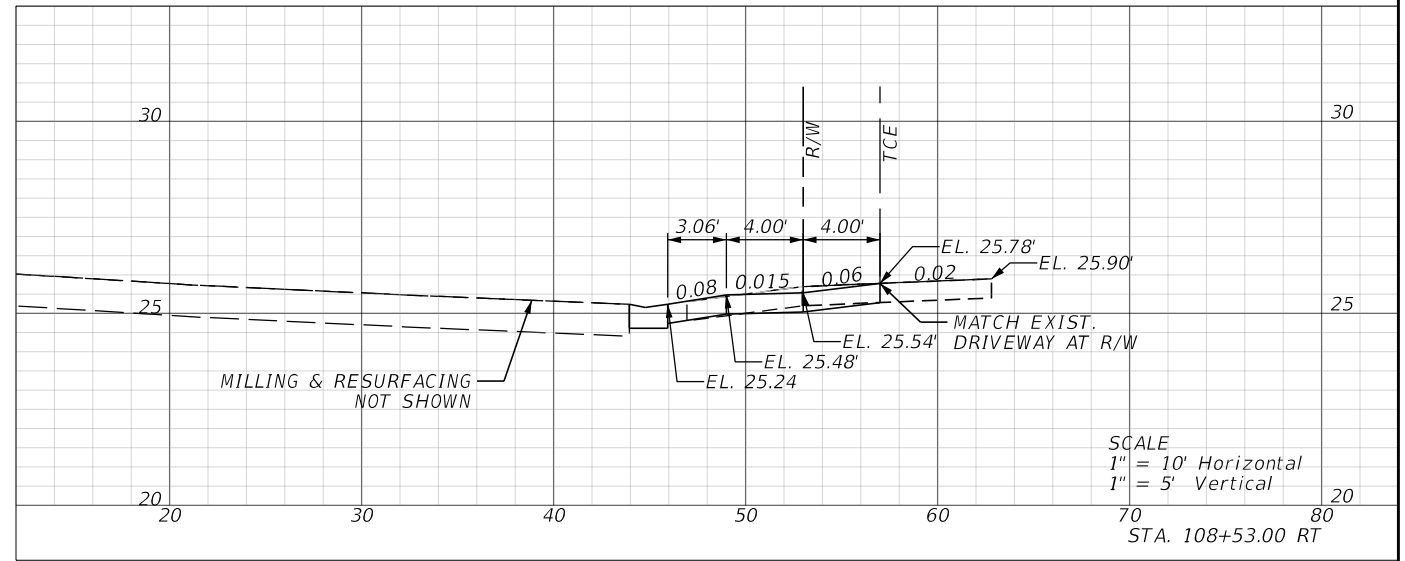
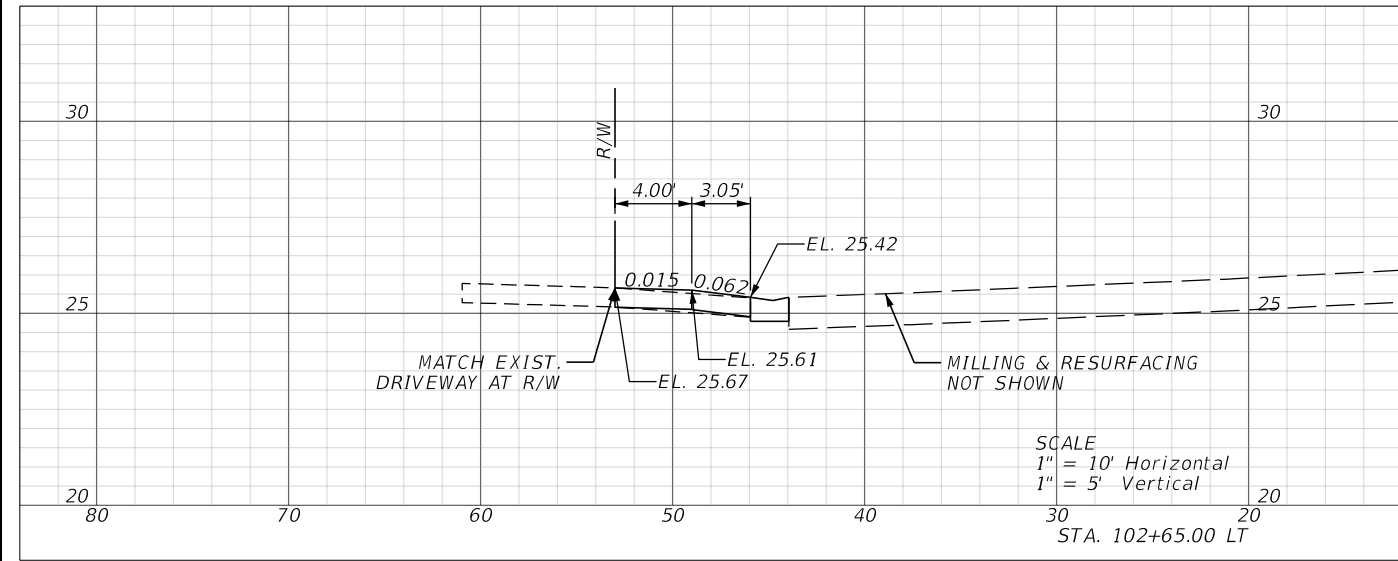
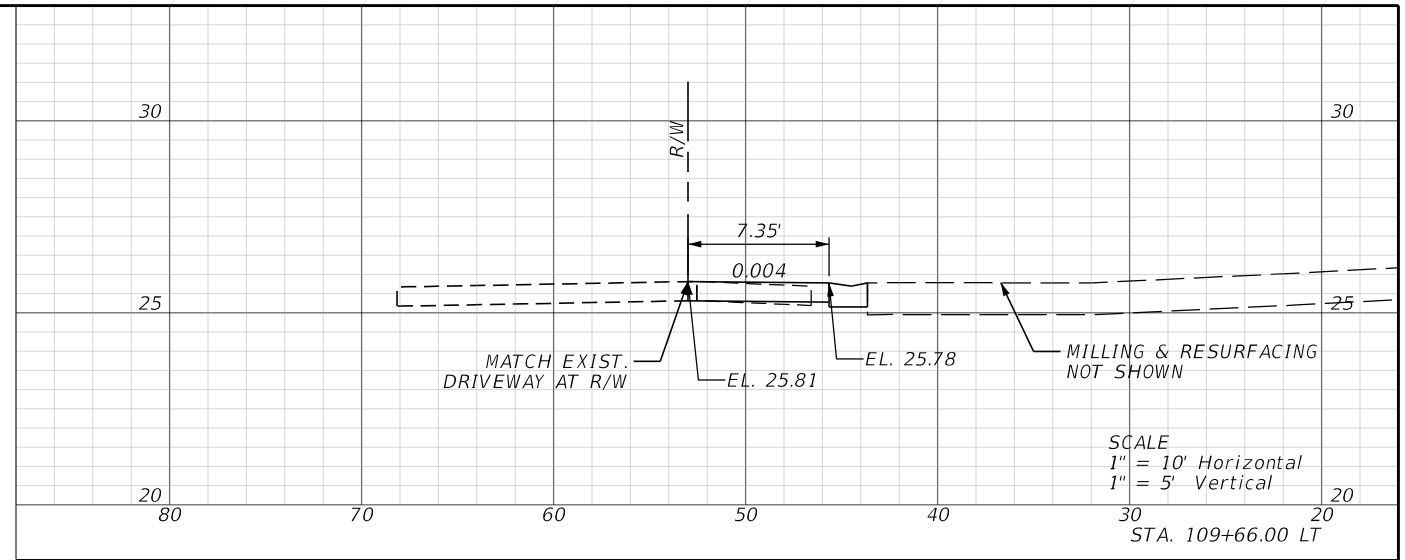
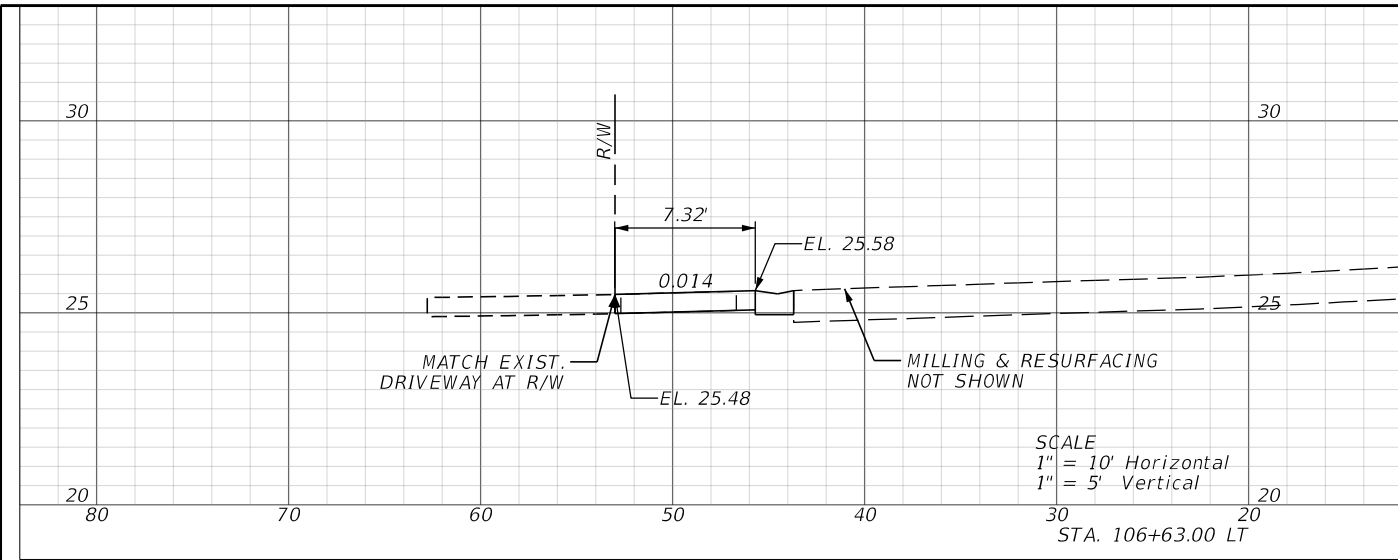
11/21/2023 6:53:32 AM jowinter C:\worksets\FDOT\0000400502\roadway\PLAN\RD01.dgn

THE OFFICIAL RECORD OF THIS SHEET IS THE ELECTRONIC FILE DIGITALLY SIGNED AND SEALED UNDER RULE 61G15-23.004, F.A.C.

REVISIONS				Stantec 1412 Jackson St., Suite 3 Fort Myers, FL 33901 Ph. 239-347-5512 Daniel M. Craig, P.E. #38590	LEE COUNTY DEPARTMENT OF TRANSPORTATION			PLAN	SHEET NO.
DATE	DESCRIPTION	DATE	DESCRIPTION		ROAD NAME	COUNTY	COUNTY CIP NO.		8
					LEE BLVD	LEE	21-00011		



11/21/2023 6:53:37 AM jowinter  
 C:\Worksets\FDOT\0000400502\Roadway\RD\SRD01.dgn



REVISIONS			
DATE	DESCRIPTION	DATE	DESCRIPTION

Stantec  
 1412 Jackson St., Suite 3  
 Fort Myers, FL 33901  
 Ph. 239-347-5512  
 Daniel M. Craig, P.E. #38590

LEE COUNTY DEPARTMENT OF TRANSPORTATION		
ROAD NAME	COUNTY	COUNTY CIP NO.
LEE BLVD.	LEE	21-00011

**DRIVEWAY CROSS SECTIONS**

SHEET NO.  
9

THE OFFICIAL RECORD OF THIS SHEET IS THE ELECTRONIC FILE DIGITALLY SIGNED AND SEALED UNDER RULE 61G15-23.004, F.A.C.

Summary of General Items and Summary of Clearing and Grubbing and Removal Items										
Pay Item Number	Pay Item Description	Unit	Quantity		Total Quantity		Location		Design Notes	Construction Remarks
			P	F	P	F	Side	Elem. ID		
0104 10 3	Sediment Barrier	LF	159		1119		RT		Lee at Joan NW corner	
			130				RT		Lee at Joan NE corner	
			151				LT		Lee at Joan SW corner	
			173				LT		Lee at Joan SE corner	
			84				LT/RT		Joan at 4th SW corner	
			81				LT		Joan at 4th NW corner	
			74				RT		Joan at 4th SE corner	
			62				LT/RT		Joan at 4th NE corner	
			117				LT		Joan	
			88				RT		Joan	
0104 18	Inlet Protection	EA	1		5		LT		100+02	
			1				RT		100+70	
			1				LT		101+05	
			1				LT		107+80	
			1				RT		107+80	
0120-6	Embankment	CY	150		150		LT/RT		Use at direction of engineer	
0110 1 1	Clearing and Grubbing	LS	1		1		LT/RT		Includes asphalt pavement removal	
0110 4 10	Removal of Existing Concrete	SY	497.7		1962.6		LT	4626	Sidewalk LT	
			455.6				LT	4662	Sidewalk LT	
			495				RT	4638	Sidewalk RT	
			298.2				RT	4650	Sidewalk RT	
			22.1				LT	4696	Driveway 1	
			16.3				LT	4697	Driveway 2	
			21				LT	4720	Driveway 3	
			25.7				RT	4723	Driveway 4	
			32.5				RT	4722	Driveway 5	
			23.6				LT	4721	Driveway 6	
			18.4				LT	5141	Curb Return NW	
			17.5				LT	5155	Curb Return NE	
			15.9				RT	5169	Curb Return SE	
20.9				RT	5186	Curb Return SW				
			2.2				LT	5209	Curb	

Summary of Pavement														
Pay Item Number	Pay Item Description	Unit	Quantity		Total Quantity		Location					Design Notes	Construction Remarks	
			P	F	P	F	Alignment	Begin Station	End Station	Location Description	Side			Elem. ID
0160 4	Type B Stabilization	SY	113.2		177		CLJOAN-S	299+25.00	299+66.00	Joan at 4th St Reconstruction	LT/RT	7036		
			63.5				CLJOAN-S	299+86.00	300+06.00	Joan at 4th St Reconstruction	LT/RT	7026		
0210 1 1	Reworking Limerock Base, 6	SY	256.1		1105		CLJOAN-N	200+43.85	201+00.00	Joan North of Lee Blvd	LT/RT	6994	Use at direction of engineer	
			174.3				CLJOAN-S	299+66.00	299+86.00	Joan South of Lee Blvd	LT	7007	Use at direction of engineer	
			675.0				CLJOAN-S	300+06.00	302+61.53	Joan South of Lee Blvd	RT	7014	Use at direction of engineer	
0285 706	Optional Base, Base Group 06	SY	113.2		177		CLJOAN-S	299+25.00	299+66.00	Joan at 4th St Reconstruction	LT/RT	7036		
			63.5				CLJOAN-S	299+86.00	300+06.00	Joan at 4th St Reconstruction	LT/RT	7026		
0327 70 1	Milling Exist Asph Pavt, 1 Avg Depth	SY	256.1		1105		CLJOAN-N	200+43.85	201+00.00	Joan North of Lee Blvd	LT/RT	6994		
			174.3				CLJOAN-S	299+66.00	299+86.00	Joan South of Lee Blvd	LT	7007		
			675.0				CLJOAN-S	300+06.00	302+61.53	Joan South of Lee Blvd	RT	7014		
0327 70 6	Milling Exist Asph Pavt, 1 1/2 Avg Depth	SY	4850.5		10358		CL	97+80.00	108+90.00	Lee Blvd Eastbound Lanes	RT	6971		
			5507.9				CL	97+80.00	110+70.00	Lee Blvd Westbound Lanes	LT	6982		
0337 7 83	Asphalt Concrete Friction Course, Traffic C, FC-12.5, PG 76-22	TN	400.16		960.3		CL	97+80.00	108+90.00	Lee Blvd Eastbound Lanes	RT	6971	1.5"	
			454.40				CL	97+80.00	110+70.00	Lee Blvd Westbound Lanes	LT	6982	1.5"	
			21.12				CLJOAN-N	200+43.85	201+00.00	Joan North of Lee Blvd	LT/RT	6994	1.5"	
			9.34				CLJOAN-S	299+66.00	299+86.00	Joan at 4th St Reconstruction	LT/RT	7036	1.5"	
			14.38				CLJOAN-S	299+66.00	299+86.00	Joan South of Lee Blvd	LT	7007	1.5"	
			5.24				CLJOAN-S	299+86.00	300+06.00	Joan at 4th St Reconstruction	LT/RT	7026	1.5"	
			55.69				CLJOAN-S	300+06.00	302+61.53	Joan South of Lee Blvd	RT	7014	1.5"	

<table border="1"> <thead> <tr> <th colspan="4">REVISIONS</th> </tr> <tr> <th>DATE</th> <th>DESCRIPTION</th> <th>DATE</th> <th>DESCRIPTION</th> </tr> </thead> <tbody> <tr> <td> </td> <td> </td> <td> </td> <td> </td> </tr> </tbody> </table>				REVISIONS				DATE	DESCRIPTION	DATE	DESCRIPTION					<b>Stantec</b> 1412 Jackson St., Suite 3 Fort Myers, FL 33901 Ph. 239-347-5512 Daniel M. Craig, P.E. #38590			<b>LEE COUNTY</b> <b>DEPARTMENT OF TRANSPORTATION</b> <table border="1"> <tr> <th>ROAD NAME</th> <th>COUNTY</th> <th>COUNTY CIP NO.</th> </tr> <tr> <td>LEE BLVD.</td> <td>LEE</td> <td>21-00011</td> </tr> </table>			ROAD NAME	COUNTY	COUNTY CIP NO.	LEE BLVD.	LEE	21-00011	<b>SUMMARY OF QUANTITIES</b>		SHEET NO. 10
REVISIONS																														
DATE	DESCRIPTION	DATE	DESCRIPTION																											
ROAD NAME	COUNTY	COUNTY CIP NO.																												
LEE BLVD.	LEE	21-00011																												

11/21/2023 6:53:41 AM jowinter  
 C:\Worksets\FDOT\0000400502\Roadway\SUMOR001.dgn

THE OFFICIAL RECORD OF THIS SHEET IS THE ELECTRONIC FILE DIGITALLY SIGNED AND SEALED UNDER RULE 61G15-23.004, F.A.C.

Summary of Drainage Items & Water Items												
Pay Item Number	Pay Item Description	Unit of Measure	Total Quantity				Alignment	Begin Station	End Station	Side	Design Notes	Construction Remarks
			P	F	P	F						
0425 7	Replace Manhole Cover, Type X	EA	1		8		CL	97+83.05		RT		
			1				CL	100+02.31		LT		
			1				CL	100+67.61		RT		
			1				CL	100+69.11		LT		
			1				CL	101+06.02		LT		
			1				CL	106+45.39		RT		
			1				CL	107+77.00		LT		
0425 1 521	Inlet, Ditch Bottom Type C, <10	EA	1		2			299+55.58		LT	S-11	
			1					299+55.58		RT	S-14	
0425 1 529	Inlet, Ditch Bottom Type C Modified, <10	EA	1		2			299+96.40		RT	S-17 W/ SLOT	
			1					299+96.40		LT	S-20 W/ SLOT	
0430 175 118	Pipe Culvert Optional Material, CD, Round 18"	LF	8		125						S-10 TO S-11	
			8								S-11 TO S-12	
			38								S-14 TO S-11	
			8								S-13 TO S-14	
			8								S-14 TO S-15	
			8								S-16 TO S-17	
			39								S-17 TO S-20	
			8								S-20 TO S-19	
0430 982 125	Mitered End Section, Cross Drain, Round 18"	EA	1		6			299+43.64		LT	S-10	
			1					299+55.88		LT	S-12	
			1					299+43.64		RT	S-13	
			1					299+55.88		RT	S-15	
			1					299+94.35		RT	S-16	
			1					299+96.40		LT	S-19	
0430 984 623	Mitered End Section, Side Drain, Ellip 12"X18"	EA	1		3			300+23.13		RT	S-18	
			1					300+63.34		RT	S-18A	
			1					301+63.65		RT	S-18B	
0430 94 1	Desilt Pipe, 0-24"	LF	45		172			300+50.00		LT		
			42					300+50.00		RT		
			42					301+40.00		RT		
			43					301+80.00		LT		
0425 2 11	Drainage Structure Repair	EA	1		1		CL	100+67.61		RT		
1080 21 5	Water Valve Adjustment	EA	1		4			105+07.37		RT		
			1					104+03.73		RT		
			1					104+22.74		RT		
			1					300+05		LT	Joan at 4th	
1080 21 1	Water Meter Box Replacement	EA	1		1		CL	104+77.57		LT		
1644 713 08	Adjust Fire Hydrant	EA	1		1			300+05		LT	Joan at 4th	

11/21/2023 6:53:41 AM jowinter C:\worksets\FDOT\0000400502\roadway\SUMORD01.dgn

THE OFFICIAL RECORD OF THIS SHEET IS THE ELECTRONIC FILE DIGITALLY SIGNED AND SEALED UNDER RULE 61G15-23.004, F.A.C.

<table border="1"> <thead> <tr> <th colspan="4">REVISIONS</th> </tr> <tr> <th>DATE</th> <th>DESCRIPTION</th> <th>DATE</th> <th>DESCRIPTION</th> </tr> </thead> <tbody> <tr> <td> </td> <td> </td> <td> </td> <td> </td> </tr> </tbody> </table>				REVISIONS				DATE	DESCRIPTION	DATE	DESCRIPTION					<p>Stantec 1412 Jackson St., Suite 3 Fort Myers, FL 33901 Ph. 239-347-5512 Daniel M. Craig, P.E. #38590</p>	<p>LEE COUNTY DEPARTMENT OF TRANSPORTATION</p> <table border="1"> <tr> <th>ROAD NAME</th> <th>COUNTY</th> <th>COUNTY CIP NO.</th> </tr> <tr> <td>LEE BLVD.</td> <td>LEE</td> <td>21-00011</td> </tr> </table>	ROAD NAME	COUNTY	COUNTY CIP NO.	LEE BLVD.	LEE	21-00011	<p><b>SUMMARY OF QUANTITIES</b></p>	<p>SHEET NO. 11</p>
REVISIONS																									
DATE	DESCRIPTION	DATE	DESCRIPTION																						
ROAD NAME	COUNTY	COUNTY CIP NO.																							
LEE BLVD.	LEE	21-00011																							

Summary of Curbs													
	Pay Item Description	Unit	Quantity		Total Quantity		Location				Design Notes		
			P	F	P	F	Alignment	Begin Station	End Station	Side			
0520	1	10	Concrete Curb & Gutter, Type F	LF	99.4		854		CL	100+04.50	101+03.84	LT	Driveway 1
					73.4				CL	102+28.84	103+02.18	LT	Driveway 2
					102.2				CL	103+68.91	104+37.94	RT	Curb Return SW
					81.9				CL	103+68.84	104+26.37	LT	Curb Return NW
					89.5				CL	104+61.23	105+18.44	RT	Curb Return SE
					77.8				CL	104+51.18	105+18.43	LT	Curb Return NE
					65.0				CL	106+30.30	106+95.26	LT	Driveway 3
					80.0				CL	106+37.08	107+17.67	RT	Driveway 4
					10.0				CL	107+56.92	107+66.92	LT	Curb
					99.6				CL	108+03.84	109+03.45	RT	Driveway 5
					75.1				CL	109+28.72	110+03.79	LT	Driveway 6

Summary of Sidewalk and Detectable Warnings													
Item	Pay Item Description	of	Quantity		Total Quantity		Location				Design Notes		
			P	F	P	F	Alignment	Begin Station	End Station	Side		Element ID	
0522	2	Sidewalk Concrete And Driveways, 6" Thick	SY	157.9		1633		CL	97+80.00	100+18.79	LT	5233	Sidewalk
				430.7				CL	97+80.00	104+18.43	RT	7103	Sidewalk
				51.7				CL	100+18.79	100+79.79	LT	5234	Driveway 1
				103.2				CL	100+79.79	102+38.83	LT	5235	Sidewalk
				46.3				CL	102+38.83	102+92.17	LT	5236	Driveway 2
				73.7				CL	102+92.17	103+97.37	LT	7066	Sidewalk
				116.1				CL	104+75.69	106+44.81	LT	7074	Sidewalk
				114.7				CL	104+83.61	106+47.08	RT	7120	Sidewalk
				35.3				CL	106+44.81	106+82.41	LT	5261	Driveway 3
				78.8				CL	106+47.08	107+07.08	RT	5373	Driveway 4
				174.6				CL	106+82.41	109+48.03	LT	5281	Sidewalk
				76.7				CL	107+07.08	108+25.19	RT	5375	Sidewalk
				64.7				CL	108+25.19	108+74.19	RT	5374	Driveway 5
				18.1				CL	108+74.19	109+03.45	RT	5376	Sidewalk
				34.3				CL	109+48.03	109+84.03	LT	5280	Driveway 6
				56.1				CL	109+84.03	110+70.00	LT	5282	Sidewalk
0527	2	Detectable Warnings	SF	10.9		131		CL	103+74.91	103+80.34	LT	3929	Curb Return NW
				10.0				CL	103+74.96	103+79.84	RT	3948	Curb Return SW
				24.6				CL	103+95.48	104+07.91	LT	7137	Curb Return NW
				20.3				CL	104+17.29	104+26.25	RT	7145	Curb Return SW
				25.3				CL	104+65.74	104+78.25	LT	7126	Curb Return NE
				19.8				CL	104+75.12	104+84.37	RT	7151	Curb Return SE
				10.0				CL	105+07.49	105+12.38	RT	7157	Curb Return SE
				10.0				CL	105+07.49	105+12.38	LT	3942	Curb Return NE

Summary of Performance Turf							
Location	Side	Length	Width	Performance Turf (Sod)		Design Notes	Construction Remarks
				0570	1 1		
STA. TO STA.				SY			
97+80.00 to 104+20.00	LT	640.0	1.0	71.1		Back of sidewalk to RW	
104+60.00 to 110+70.00	LT	610.0	1.0	67.8		Back of sidewalk to RW	
97+80.00 to 104+20.00	RT	640.0	1.0	71.1		Back of sidewalk to RW	
104+60.00 to 108+85.74	RT	425.7	1.0	47.3		Back of sidewalk to RW	
299+14 to 299+67	LT			125.9		Joan at 4th St SW return area	
299+14 to 299+67	RT			147.3		Joan at 4th St SE return area	
299+83 to 300+36	LT			118.6		Joan at 4th St NW return area	
299+85 to 300+33	RT			127.7		Joan at 4th St NE return area	
300+62 to 301+67	LT			159.0		Joan Ave Swale LT	
301+95 to 302+52	LT			62.4		Joan Ave Swale LT and Curb Return Area	
301+55 to 302+52	RT			165.4		Joan Ave Swale RT and Curb Return Area	
300+57 to 301+31	RT			133.7		Joan Ave Swale RT	
200+53 to 201+00	LT			74.8		Joan Ave N Curb Return Area	
200+59 to 201+00	RT			45.0		Joan Ave N Curb Return Area	
Sub-Total:				1417.1			
Total:				1417			

11/21/2023 6:53:41 AM jowinter C:\worksets\FDOT\0000400502\roadway\SUMOR001.dgn

REVISIONS			
DATE	DESCRIPTION	DATE	DESCRIPTION

Stantec  
1412 Jackson St., Suite 3  
Fort Myers, FL 33901  
Ph. 239-347-5512  
Daniel M. Craig, P.E. #38590

LEE COUNTY  
DEPARTMENT OF TRANSPORTATION

ROAD NAME	COUNTY	COUNTY CIP NO.
LEE BLVD.	LEE	21-00011

SUMMARY OF QUANTITIES

SHEET NO.  
12

THE OFFICIAL RECORD OF THIS SHEET IS THE ELECTRONIC FILE DIGITALLY SIGNED AND SEALED UNDER RULE 61G15-23.004, F.A.C.