

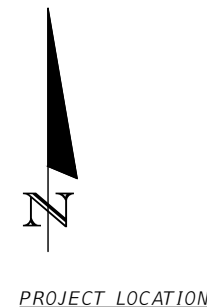
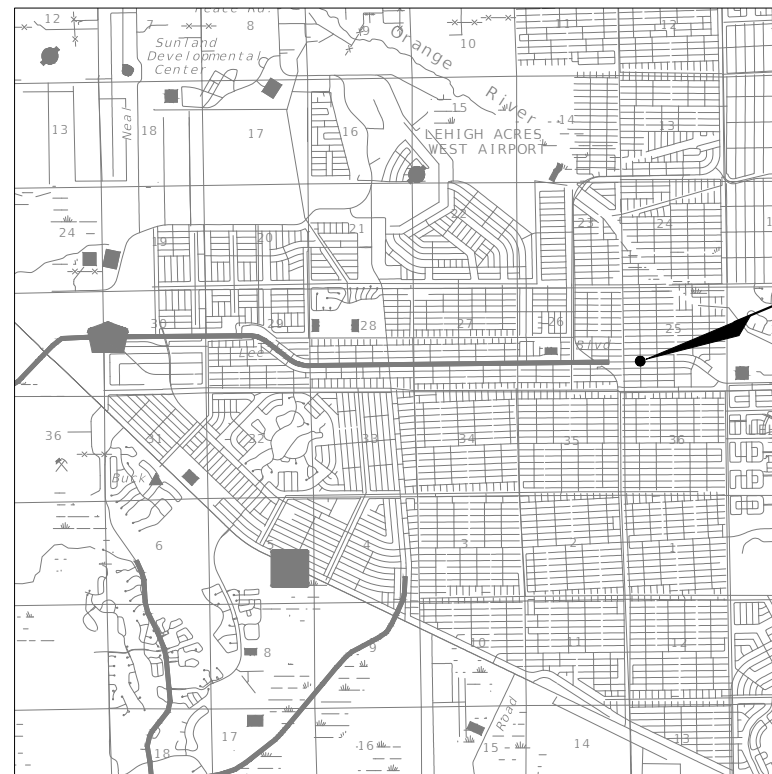
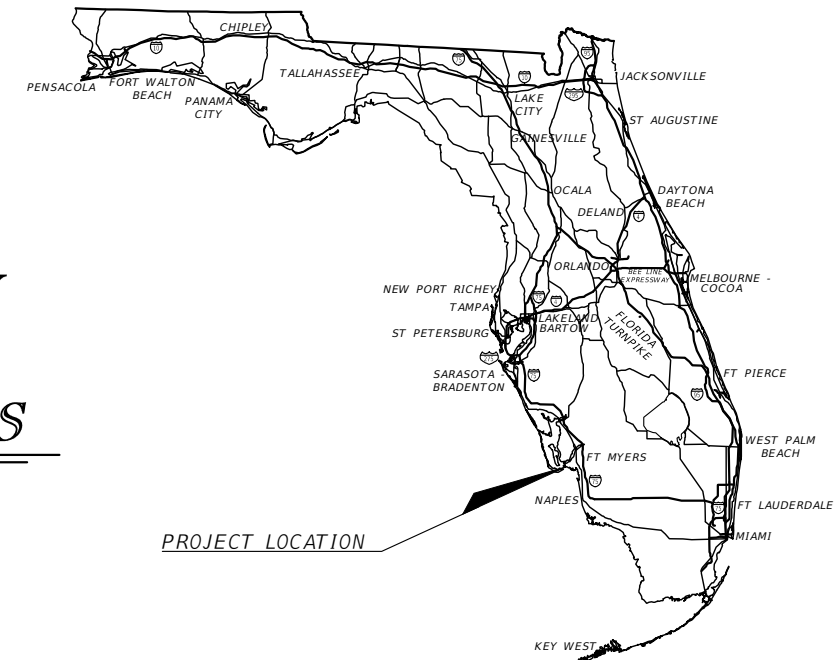
**LEE COUNTY
DEPARTMENT OF TRANSPORTATION**

CONTRACT PLANS

**INTERSECTION IMPROVEMENTS
LEE BOULEVARD AT JOAN AVENUE N
SIGNALIZATION AND LIGHTING PLANS**

INDEX OF SIGNALIZATION AND LIGHTING PLANS

SHEET NO.	SHEET DESCRIPTION
T-1	KEY SHEET
T-2	SIGNATURE SHEET
T-3	TABULATION OF QUANTITIES
T-4 - T-6	GENERAL NOTES
T-7	LIGHT POLE DATA AND LEGEND
T-8 - T-11	SIGNALIZATION PLAN
T-12	ADVANCE SIGNS
T-13	MAST ARM TABULATION
T-14	STANDARD MAST ARM ASSEMBLIES DATA TABLE
T-15	LIGHT POLE WIRING DETAIL
T-16	GUIDE SIGN WORKSHEET
T-17	FIBER OPTIC SPLICE DETAILS
T-18	REPORT OF CORE BORINGS



GOVERNING STANDARD PLANS:
Florida Department of Transportation, FY 2023-24
Standard plans for Road and Bridge Construction and
applicable Interim Revisions (Irs).

Standard Plans for Road Construction and associated Irs
are available at the following website:

Standard Plans for Bridge Construction are included in
the Structures Plans Component.

GOVERNING STANDARD SPECIFICATIONS:
Florida Department of Transportation, FY 2023-24
Standard Specifications for Road and Bridge Construction
at the following website:

<http://www.fdot.gov/programmanagement/Implemented/SpecBooks>

SIGNALIZATION AND LIGHTING PLANS
ENGINEER OF RECORD:

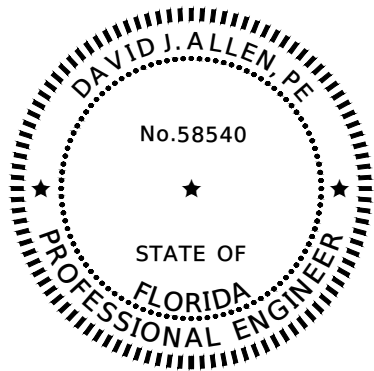
DAVID J. ALLEN, P.E.
P.E. NO.: 58540
STANTEC CONSULTING SERVICES, INC.
3905 CRESCENT PARK DRIVE
RIVERVIEW, FLORIDA 33578

LEE COUNTY PROJECT MANAGER:

RYAN KIRSCH

LEE COUNTY CIP NO.	FISCAL YEAR	SHEET NO.
21-00011	24	T-1

THE OFFICIAL RECORD OF THIS SHEET IS THE ELECTRONIC FILE DIGITALLY SIGNED AND SEALED UNDER RULE 61G15-23.004, F.A.C.



THIS ITEM HAS BEEN DIGITALLY SIGNED AND SEALED BY:

ON THE DATE ADJACENT TO THE SEAL

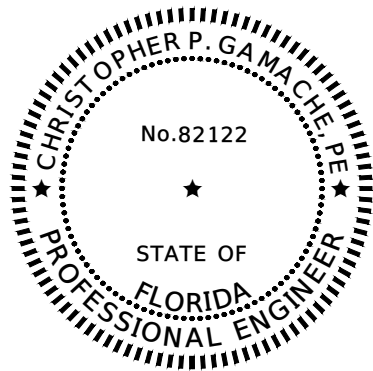
PRINTED COPIES OF THIS DOCUMENT ARE NOT CONSIDERED SIGNED AND SEALED AND THE SIGNATURE MUST BE VERIFIED ON ANY ELECTRONIC COPIES.

STANTEC CONSULTING SERVICES, INC.
3905 CRESCENT PARK DRIVE
RIVERVIEW, FL 33578
DAVID J. ALLEN, P.E. NO. 58540

THE ABOVE NAMED PROFESSIONAL ENGINEER SHALL BE RESPONSIBLE FOR THE FOLLOWING SHEETS IN ACCORDANCE WITH RULE 61G15-23.004, F.A.C.

PLAN INDEX

SHEET NO.	DESCRIPTION
T-1	KEY SHEET
T-2	SIGNATURE SHEET
T-3	TABULATION OF QUANTITIES
T-4 - T-6	GENERAL NOTES
T-7	LIGHT POLE DATA AND LEGEND
T-8 - T-11	SIGNALIZATION PLAN
T-12	ADVANCE SIGNS
T-13	MAST ARM TABULATION
T-15	LIGHT POLE WIRING DETAIL
T-16	GUIDE SIGN WORKSHEET
T-17	FIBER OPTIC SPLICE DETAILS



THIS ITEM HAS BEEN DIGITALLY SIGNED AND SEALED BY:

ON THE DATE ADJACENT TO THE SEAL

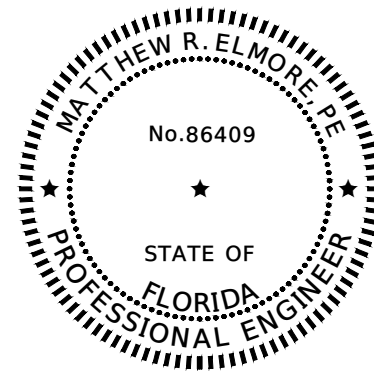
PRINTED COPIES OF THIS DOCUMENT ARE NOT CONSIDERED SIGNED AND SEALED AND THE SIGNATURE MUST BE VERIFIED ON ANY ELECTRONIC COPIES.

STANTEC CONSULTING SERVICES, INC.
380 PARK PLACE BLVD SUITE 300
CLEARWATER, FL 33579
CHRISTOPHER P. GAMACHE, P.E. NO. 82122

THE ABOVE NAMED PROFESSIONAL ENGINEER SHALL BE RESPONSIBLE FOR THE FOLLOWING SHEETS IN ACCORDANCE WITH RULE 61G15-23.004, F.A.C.

PLAN INDEX

SHEET NO.	DESCRIPTION
T-2	SIGNATURE SHEET
T-14	STANDARD MAST ARM ASSEMBLIES DATA TABLE



THIS ITEM HAS BEEN DIGITALLY SIGNED AND SEALED BY:

ON THE DATE ADJACENT TO THE SEAL

PRINTED COPIES OF THIS DOCUMENT ARE NOT CONSIDERED SIGNED AND SEALED AND THE SIGNATURE MUST BE VERIFIED ON ANY ELECTRONIC COPIES.

GFA INTERNATIONAL, INC.
201 WALDO AVENUE NORTH
LEHIGH ACRES, FLORIDA 33971
MATTHEW R. ELMORE, P.E. NO. 86409

THE ABOVE NAMED PROFESSIONAL ENGINEER SHALL BE RESPONSIBLE FOR THE FOLLOWING SHEETS IN ACCORDANCE WITH RULE 61G15-23.004, F.A.C.

PLAN INDEX

SHEET NO.	DESCRIPTION
T-2	SIGNATURE SHEET
T-18	REPORT OF CORE BORINGS

REVISIONS				DAVID J. ALLEN, P.E. P.E. LICENSE NUMBER 58540 STANTEC CONSULTING SERVICES, INC. 3905 CRESCENT PARK DRIVE RIVERVIEW, FLORIDA 33578	LEE COUNTY DEPARTMENT OF TRANSPORTATION			SIGNATURE SHEET	SHEET NO.
DATE	DESCRIPTION	DATE	DESCRIPTION		ROAD NAME	LEE COUNTY CIP NO.	FINANCIAL PROJECT ID		
						LEE BLVD.	21-00011		N/A

TABULATION OF QUANTITIES

PAY ITEM NO.	DESCRIPTION	UNIT	SHEET NUMBERS														TOTAL THIS SHEET		GRAND TOTAL	
			T-8		T-9		T-12										PLAN	FINAL	PLAN	FINAL
			PLAN	FINAL	PLAN	FINAL	PLAN	FINAL	PLAN	FINAL	PLAN	FINAL	PLAN	FINAL						
ASB-1	AS-BUILT PLANS	LS																		1
630-2-11	CONDUIT, FURNISH & INSTALL, OPEN TRENCH	LF	690		1040												1730		1730	
630-2-12	CONDUIT, FURNISH & INSTALL, DIRECTIONAL BORE	LF	295														295		295	
632-7-1	SIGNAL CABLE- NEW OR RECONSTRUCTED INTERSECTION, FURNISH & INSTALL	PI	1														1		1	
633-1-121	FIBER OPTIC CABLE, F&I, UNDERGROUND, 2-12 FIBERS	LF	400		1060												1460		1460	
633-2-31	FIBER OPTIC CONNECTION, INSTALL, SPLICE	EA			12												12		12	
633-2-32	FIBER OPTIC CONNECTION, INSTALL, TERMINATION	EA	12														12		12	
633-3-11	FIBER OPTIC CONNECTION HARDWARE, F&I, SPLICE ENCLOSURE	EA			1												1		1	
633-3-12	FIBER OPTIC CONNECTION HARDWARE, F&I, SPLICE TRAY	EA			1												1		1	
633-3-13	FIBER OPTIC CONNECTION HARDWARE, F&I, PRETERMINATED CONNECTOR ASSEMBLY	EA	1														1		1	
633-3-14	FIBER OPTIC CONNECTION HARDWARE, F&I, BUFFER TUBE FAN OUT KIT	EA			1												1		1	
633-3-16	FIBER OPTIC CONNECTION HARDWARE, F&I, PATCH PANEL- FIELD TERMINATED	EA	1														1		1	
635-2-12	PULL & SPLICE BOX, F&I, 24" X 36" COVER SIZE	EA	3														3		3	
635-2-13	PULL & SPLICE BOX, F&I, 30" X 60" RECTANGULAR	EA			1												1		1	
635-2-14	PULL & SPLICE BOX, F&I, 17" X 30" COVER SIZE	EA	29		6												35		35	
639-1-122	ELECTRICAL POWER SERVICE, F&I, UNDERGROUND, METER PURCHASED BY CONTRACTOR	AS	1														1		1	
639-2-1	ELECTRICAL SERVICE WIRE, FURNISH & INSTALL	LF	310														310		310	
639-3-11	ELECTRICAL SERVICE DISCONNECT, F&I, POLE MOUNT	EA	1														1		1	
641-2-12	PRESTRESSED CONCRETE POLE, F&I, TYPE P-II SERVICE POLE (12')	EA	2														2		2	
646-1-11	ALUMINUM SIGNALS POLE, PEDESTAL	EA	8														8		8	
649-21-1	STEEL MAST ARM ASSEMBLY, FURNISH AND INSTALL, SINGLE ARM 30'	EA	1														1		1	
649-21-15	STEEL MAST ARM ASSEMBLY, FURNISH AND INSTALL, SINGLE ARM 70'	EA	1														1		1	
649-21-19	STEEL MAST ARM ASSEMBLY, FURNISH AND INSTALL, DOUBLE ARM 70'-60'	EA	1														1		1	
650-1-14	VEHICULAR TRAFFIC SIGNAL, FURNISH & INSTALL ALUMINUM, 3 SECTION, 1 WAY	AS	10														10		10	
650-1-16	VEHICULAR TRAFFIC SIGNAL, FURNISH & INSTALL ALUMINUM, 4 SECTION, 1 WAY	AS	2														2		2	
653-1-11	PEDESTRIAN SIGNAL, FURNISH & INSTALL LED COUNTDOWN, 1 WAY	AS	8														8		8	
660-1-111	LOOP DETECTOR INDUCTIVE, F&I, TYPE II, 4 CH, SS, RM	EA	8														8		8	
660-2-102	LOOP ASSEMBLY, F&I, TYPE B	AS	6		12												18		18	
660-2-106	LOOP ASSEMBLY, F&I, TYPE F	AS	4														4		4	
665-1-12	PEDESTRIAN DETECTOR, FURNISH & INSTALL, ACCESSIBLE	EA	8														8		8	
670-5-110	TRAFFIC CONTROLLER ASSEMBLY, F&I, ATCC	AS	1														1		1	
682-1-133	ITS CCTV CAMERA, F&I, DOME ENCLOSURE - NON-PRESSURIZED, IP, HIGH DEFINITION	EA	1														1		1	
684-1-1	MANAGED FIELD ETHERNET SWITCH, FURNISH & INSTALL	EA	1														1		1	
685-1-11	UNINTERRUPTIBLE POWER SUPPLY, FURNISH AND INSTALL, LINE INTERACTIVE	EA	1														1		1	
700-1-11	SINGLE POST SIGN, F&I GROUND MOUNT, UP TO 12 SF	AS					4										4		4	
700-1-12	SINGLE POST SIGN, F&I GROUND MOUNT, 12-20 SF	AS					3										3		3	
700-3-201	SIGN PANEL, FURNISH & INSTALL OVERHEAD MOUNT, UP TO 12 SF	EA	2														2		2	
700-3-202	SIGN PANEL, FURNISH & INSTALL OVERHEAD MOUNT, 12-20 SF	EA	4														4		4	
715-1-12	LIGHTING CONDUCTORS, F&I, INSULATED, NO. 8 - 6	LF	2700														2700		2700	
715-7-11	LOAD CENTER, F&I, SECONDARY VOLTAGE	EA	1														1		1	
715-11-111	LUMINAIRE, F&I, ROADWAY, COBRA HEAD	EA	2														2		2	
715-65-156	LIGHT POLE COMPLETE, F&I, UTILITY CONFLICT POLE STANDARD FOUNDATION, 30' MOUNTING HEIGHT, 15' ARM LENGTH	EA	1														1		1	
715-65-256	LIGHT POLE COMPLETE, F&I, UTILITY CONFLICT POLE STANDARD FOUNDATION, 35' MOUNTING HEIGHT, 15' ARM LENGTH	EA	1														1		1	
715-66-156	LIGHT POLE COMPLETE, F&I, UTILITY CONFLICT POLE SPECIAL FOUNDATION, 30' MOUNTING HEIGHT, 15' ARM LENGTH	EA	4														4		4	

THE OFFICIAL RECORD OF THIS SHEET IS THE ELECTRONIC FILE DIGITALLY SIGNED AND SEALED UNDER RULE 61G15-23.004, F.A.C.

REVISIONS				DAVID J. ALLEN, P.E. P.E. LICENSE NUMBER 58540 STANTEC CONSULTING SERVICES, INC. 3905 CRESCENT PARK DRIVE RIVERVIEW, FLORIDA 33578	LEE COUNTY DEPARTMENT OF TRANSPORTATION			TABULATION OF QUANTITIES	SHEET NO. T-3
DATE	DESCRIPTION	DATE	DESCRIPTION		ROAD NAME	LEE COUNTY CIP NO.	FINANCIAL PROJECT ID		
					LEE BLVD.	21-00011	N/A		

GENERAL NOTES

1. SPECIFICATIONS: ADHERE TO REQUIREMENTS IN "LEE COUNTY DEPARTMENT OF TRANSPORTATION PLAN SPECIFICATIONS FOR SIGNAL & STREET LIGHTING", JANUARY 2023. CONTACT LEE COUNTY DEPARTMENT OF TRANSPORTATION (LCDOT) FOR ANY QUESTIONS REGARDING EQUIPMENT OR INSTALLATION REQUIREMENTS. FOLLOW THE FDOT GOVERNING STANDARDS AND SPECIFICATIONS FOR ALL ITEMS NOT COVERED BY LEE COUNTY SPECIFICATIONS.
2. NOTIFICATIONS: PRIOR TO THE START OF ANY CONSTRUCTION OF TRAFFIC SIGNALS, STREET LIGHTING, RRFBS, FLASHERS, SCHOOL FLASHERS, AND ITS DEVICES, LEE COUNTY DOT TRAFFIC SHALL BE NOTIFIED VIA EMAIL LCDOTPROJECTS@LEEGOV.COM AT LEAST TEN (10) BUSINESS DAYS PRIOR
3. PRELIMINARY PRODUCT AND EQUIPMENT DATA SUBMITTALS: PRIOR TO INSTALLATION OR WITHIN THIRTY (30) DAYS AFTER THE PRECONSTRUCTION MEETING, WHICHEVER COMES FIRST, SUBMIT TO LEE COUNTY DOT TRAFFIC FOR APPROVAL, A COMPLETED SUBMITTAL PACKAGE THAT INCLUDES THE FOLLOWING. ALL TRAFFIC CONTROL SIGNALS, DEVICES, AND HARDWARE THAT WILL BE USED ON THE PROJECT. SHOP DRAWINGS FOR STRUCTURAL SUPPORT MATERIAL AND OTHER SPECIAL DESIGNS, SUCH AS NON-ELECTRICAL, NON-MECHANICAL, OR OTHER FABRICATED ITEMS WHICH MAY NOT BE SPECIFICALLY DETAILED IN THE PLANS VIA EMAIL LCDOTPROJECTS@LEEGOV.COM
4. QUALIFICATIONS: MINIMUM QUALIFICATIONS FOR PERSONNEL SUPERVISING OR PERFORMING WORK INVOLVING ELECTRICAL OR SOLAR POWER TRAFFIC CONTROL DEVICES, STREET LIGHTING AND RELATED COMPONENTS.
 - A. TRAFFIC SIGNAL CABINET WIRING: WORK MUST BE PERFORMED BY AN EMPLOYEE OF THE CONTRACTOR THAT HOLDS A CURRENT IMSA TRAFFIC SIGNAL FIELD TECHNICIAN LEVEL II CERTIFICATION OR HIGHER; AND MUST BE PRESENT AT THE FINAL INSPECTION OF THE PROJECT.
 - B. TRAFFIC SIGNAL ELECTRICAL SERVICE: WORK MUST BE PERFORMED BY OR IN THE PRESENCE OF AND UNDER THE RESPONSIBLE CHARGE OF AN EMPLOYEE OF THE LICENSED ELECTRICAL CONTRACTOR AND THAT HOLDS A CURRENT IMSA TRAFFIC SIGNAL FIELD TECHNICIAN LEVEL II CERTIFICATION OR HIGHER.
 - C. RRFB, FLASHERS, AND SCHOOL FLASHERS: WORK MUST BE PERFORMED BY AN EMPLOYEE OF THE CONTRACTOR THAT HOLDS A CURRENT IMSA TRAFFIC SIGNAL FIELD TECHNICIAN LEVEL II CERTIFICATION OR HIGHER; AND MUST BE PRESENT AT THE FINAL INSPECTION OF THE PROJECT.
 - D. ITS DEVICES: WORK MUST BE PERFORMED BY AN EMPLOYEE OF THE CONTRACTOR THAT HOLDS A CURRENT IMSA TRAFFIC SIGNAL FIELD TECHNICIAN LEVEL II CERTIFICATION OR HIGHER; AND MUST BE PRESENT AT THE FINAL INSPECTION OF THE PROJECT.
 - E. STREET LIGHTING: WORK MUST BE PERFORMED BY OR IN THE PRESENCE OF AND UNDER THE RESPONSIBLE CHARGE OF AN EMPLOYEE OF THE LICENSED ELECTRICAL CONTRACTOR AND THAT HOLDS A CURRENT IMSA ROADWAY LIGHTING TECHNICIAN LEVEL I CERTIFICATION OR HIGHER.
5. CONTRACTOR TRANSFER OF MAINTENANCE RESPONSIBILITIES:
 - A. FULLY MAINTAIN ALL TRAFFIC CONTROL DEVICES LOCATED WITHIN THE PROJECT LIMITS, INCLUDING ANY INTERCONNECT, PREEMPTION, SYSTEM/ADVANCED LOOPS, AND ITS DEVICES, BEGINNING ON THE DATE OF THE NOTICE TO PROCEED OR THE DATE CONTRACTOR HAS BEGUN ANY WORK ON ANY PORTION OF THE PROJECT, WHICHEVER IS SOONER, THROUGH AND INCLUDING THE DATE OF FINAL ACCEPTANCE BY THE COUNTY SUBJECT TO ANY ADDITIONAL CONTRACTOR WARRANTY AND BURN-IN PERIOD REQUIREMENTS. INVESTIGATE ALL INQUIRIES, COMPLAINTS OR REQUESTS MADE BY THE COUNTY OR THE PUBLIC AND IMMEDIATELY INITIATE ALL REQUIRED REPAIRS.
 - B. NOTIFY LEE COUNTY DOT TRAFFIC OF INTENT TO BEGIN ANY PHYSICAL CONSTRUCTION WORK ON THE PROJECT OR ANY PORTION THEREOF. THIS NOTIFICATION MUST BE A MINIMUM OF SEVEN (7) WORKING DAYS PRIOR TO THE START OF CONSTRUCTION TO ALLOW SUFFICIENT TIME FOR CONTRACTOR TO CONDUCT AN INSPECTION OF THE EXISTING TRAFFIC CONTROL DEVICE INSTALLATION(S). IN THE EVENT ANY DEFICIENCIES ARE NOTED BY CONTRACTOR, AT THE COUNTY'S OPTION, THEY ARE TO BE REPAIRED BY LEE COUNTY DOT TRAFFIC OR DOCUMENTED ON THE "TRANSFER OF MAINTENANCE" FORM. IF WORK IS STARTED PRIOR TO THE INSPECTION, MAINTENANCE OF THE TRAFFIC CONTROL DEVICE(S) WILL IMMEDIATELY BE TRANSFERRED TO CONTRACTOR WITHOUT AN INSPECTION. CONTRACTOR IS THEN RESPONSIBLE FOR REPAIRING OR REPLACING ALL EQUIPMENT THAT IS NOT OPERATING PROPERLY OR IS DAMAGED AT NO COST TO THE OWNER OF THE TRAFFIC CONTROL DEVICE.
6. EMERGENCY AND NON-EMERGENCY REPAIRS:
 - A. PROVIDE LEE COUNTY DOT TRAFFIC MINIMUM TWO (2) CONTACT NAMES AND (24-HOUR) TELEPHONE NUMBERS. CONTRACTOR MUST PROVIDE SUFFICIENT QUALIFIED PERSONNEL TO RESPOND TO ALL NOTIFICATIONS OF MALFUNCTIONS ON AROUND-THE-CLOCK BASIS (24 HOURS A DAY, 7 DAYS A WEEK).
 - B. MAINTAIN AND MAKE AVAILABLE TO LEE COUNTY DOT TRAFFIC A TIME AND DATE LOG OF EACH RESPONSE FROM THE TIME OF THE INITIAL REPORT TO THE TIME OF FINAL PERMANENT REPAIR.
 - C. WHEN A SIGNAL MALFUNCTION OCCURS, CONTRACTOR MUST RESPOND WITHIN TWO (2) HOURS OF NOTIFICATION AND REPAIR THE TRAFFIC SIGNAL SO THAT IT IS OPERATING IN A SAFE MANNER WITHIN FOUR (4) HOURS OF INITIAL NOTIFICATION. CONTRACTOR IS RESPONSIBLE FOR THE PERMANENT REPAIR WITHIN 24 HOURS, AND MUST NOTIFY THE COUNTY IMMEDIATELY UPON COMPLETION OF THE REPAIRS. IF CONTRACTOR FAILS TO RESPOND WITHIN TWO (2) HOURS, THE COUNTY RESERVES THE RIGHT TO EITHER REPAIR THE MALFUNCTION OR EMPLOY ALTERNATE PERSONNEL AND CHARGE ALL COSTS INCURRED BY THE COUNTY TO THE CONTRACTOR.
 - D. AUTHORIZED COUNTY PERSONNEL MAY, AT ANY TIME, ENTER THE CONTROLLER CABINET IN ORDER TO MODIFY TIMING OR RESTORE ANY AND ALL SIGNAL EQUIPMENT TO PROPER OPERATION IF THE MALFUNCTION OR NON-FUNCTION OF SUCH EQUIPMENT POSES A HAZARD OR INCONVENIENCE TO MOTORISTS OR PEDESTRIANS. SUCH AUTHORIZED ENTRY MAY OCCUR AT ANY TIME WITHIN THE PERIOD OF THE CONTRACT, AND SUCH AUTHORIZED ENTRY WILL IN NO WAY RELIEVE THE CONTRACTOR OR MANUFACTURER OF THEIR RESPECTIVE WARRANTIES.
7. EMERGENCY REPAIRS:
 - A. DURING THE TRANSFER OF MAINTENANCE PERIOD, THE FOLLOWING WILL BE CONSIDERED AN EMERGENCY UNLESS OTHERWISE IDENTIFIED BY LEE COUNTY DOT TRAFFIC:
 - a. ANY HAZARDOUS CONDITION;
 - b. ANY MALFUNCTION OF A CONTROLLER AND ITS ACCESSORY EQUIPMENT; OR
 - c. ANY SITE CONDITION, EQUIPMENT MALFUNCTIONS OR DAMAGE, WHICH IN THE OPINION OF LEE COUNTY DOT TRAFFIC CONSTITUTES A SERIOUS HAZARD OR INCONVENIENCE TO THE PUBLIC.
 - B. CONTRACTOR MUST DISPATCH PERSONNEL TO UNDERTAKE EACH SUCH REPAIR NO LATER THAN THIRTY (30) MINUTES AFTER THE COUNTY NOTIFIES CONTRACTOR OF THE EMERGENCY. PERSONNEL RESPONDING MUST ARRIVE WITHIN ONE (1) HOUR AFTER NOTIFICATION AND IMMEDIATELY PROCEED TO MAKE THE SITE SAFE.
8. LOCATES: ONE (1) COURTESY LOCATE SHALL BE PERFORMED BY LEE COUNTY SIGNALS AT THE START OF THE PROJECT AT THE CONTRACTOR'S REQUEST. THE CONTRACTOR SHALL DOCUMENT THE LOCATION OF THE EXISTING UNDERGROUND AND ABOVE GROUND FACILITIES. AFTER THE COURTESY LOCATE, ALL LOCATES WITHIN THE PROJECT LIMITS ARE THE RESPONSIBILITY OF THE CONTRACTOR AND SHALL BE PERFORMED IN A TIMELY MANNER. TIMELY MANNER IN RESPONSE TO LOCATES IS DEFINED AS, LOCATE SHALL BE PERFORMED NO LATER THAN TWENTY-FOUR (24) HOURS AFTER NOTIFICATION OR AS REQUIRED BY FLORIDA STATUTE. LEE COUNTY SIGNALS WILL ADVISE THE CONTRACTOR VIA E-MAIL OR FAX OF SUNSHINE LOCATE REQUESTS WITHIN THE WORK ZONE. ANY DAMAGE INCURRED DUE TO CONTRACTOR FAILURE TO LOCATE SHALL BE REPAIRED BY THE CONTRACTOR. SHOULD LEE COUNTY FORCES BE CALLED OUT TO MAKE REPAIRS DUE TO CONTRACTOR REFUSAL OR INABILITY TO MAKE REPAIRS, THE CONTRACTOR WILL BE BILLED THE ENTIRE COST AS A "DEDUCT" ON THE NEXT PAYMENT REQUEST AND WILL TRIGGER A "VENDOR/CONTRACTOR COMPLAINT" NOTICE TO BE FILED WITH LEE COUNTY CONTRACTS AS WELL AS FDOT. BEING AN "OUT OF TOWN" CONTRACTOR DOES NOT RELIEVE THIS RESPONSIBILITY.
9. DAMAGE TO EXISTING FACILITIES: ANY DAMAGE TO LEE COUNTY FACILITIES SHALL BE REPAIRED BY THE CONTRACTOR. REPAIRS SHALL BE MADE TO ENSURE FACILITIES ARE LIKE OR BETTER. ANY DAMAGE TO EXISTING COMMUNICATION LINES SHALL NECESSITATE THE REMOVAL OF ALL DAMAGED LINES AND THE RE-PULLING OF NEW CABLE. SPLICING OF COMMUNICATION LINES WILL NOT BE ALLOWED. CAUTION SHALL BE EXERCISED DURING EXCAVATION NEAR EXISTING LEE COUNTY FIBER OPTIC LINES, SINCE MANY ENTITIES USE THESE FACILITIES. SHOULD DAMAGE OCCUR TO FIBER OPTIC LINES, LEE COUNTY WILL DECIDE WHICH QUALIFIED FIBER OPTIC SPLICING COMPANY WILL BE USED TO MAKE REPAIRS. THE CONTRACTOR WILL BE RESPONSIBLE FOR ALL REPAIR COSTS INCURRED, WHETHER REPAIRS ARE MADE BY LEE COUNTY OR A THIRD PARTY.

REVISIONS				DAVID J. ALLEN, P.E. P.E. LICENSE NUMBER 58540 STANTEC CONSULTING SERVICES, INC. 3905 CRESCENT PARK DRIVE RIVERVIEW, FLORIDA 33578	LEE COUNTY DEPARTMENT OF TRANSPORTATION			GENERAL NOTES (1)	SHEET NO.
DATE	DESCRIPTION	DATE	DESCRIPTION		ROAD NAME	LEE COUNTY CIP NO.	FINANCIAL PROJECT ID		
						LEE BLVD.	21-00011		N/A

THE OFFICIAL RECORD OF THIS SHEET IS THE ELECTRONIC FILE DIGITALLY SIGNED AND SEALED UNDER RULE 61G15-23.004, F.A.C.

GENERAL NOTES (CONT.)

10. EXISTING EQUIPMENT: EQUIPMENT SHALL BE RETURNED TO LEE COUNTY DOT/TRAFFIC IN GOOD OPERATING CONDITION AND IN THE SAME CONDITION AS ON THE DAY OF THE MAINTENANCE TRANSFER AT 5650 ENTERPRISE PARKWAY, FORT MYERS, FL 33905 AND IN A TIMELY MANNER. TIMELY MANNER FOR EXISTING EQUIPMENT IS DEFINED AS NO LATER THAN 72 HOURS AFTER DISCONNECTION. THE CONTRACTOR SHALL NOTIFY LEE COUNTY OF THE DISCONNECTION 24 HOURS IN ADVANCE TO SCHEDULE THE DELIVERY OF THE EQUIPMENT SO THAT DELIVERY TAKES PLACE DURING A REGULAR BUSINESS DAY AND HOURS. FAILURE TO PERFORM AS OUTLINED IN THIS PARAGRAPH WILL RESULT IN NO INSPECTION AT COMPLETION UNTIL CONTRACTOR IS IN COMPLIANCE WITH THIS REQUIREMENT. LEE COUNTY SIGNALS WILL WITHHOLD PAYMENT REQUESTS UNTIL LEE COUNTY PROPERTY IS DELIVERED TO 5650 ENTERPRISE PARKWAY, FORT MYERS, FL 33905.
11. CABINET/CONTROLLER/VIDEO DETECTION PREP: LEE COUNTY SIGNALS WILL ASSIST THE CONTRACTOR IN THE SETUP OF NEW SIGNAL CABINET/CONTROLLERS/CAMERAS WHEN THE FOLLOWING CONDITIONS ARE MET: DELIVERY OF EQUIPMENT TO 5650 ENTERPRISE PARKWAY, FORT MYERS, FL 33905 BY CONTRACTOR OF SHIPPER. THE CONTRACTOR SHALL SEND A QUALIFIED TECHNICIAN TO THE SIGNAL SHOP TO SETUP THE EQUIPMENT WITH THE AID OF A SENIOR SIGNAL TECHNICIAN, GIVING A MINIMUM OF 48 HOURS' NOTICE. AFTER SETUP, THE CONTRACTOR SHALL ARRANGE TO PICK UP THE EQUIPMENT WITHIN ONE WEEK. AT TIME OF REMOVAL FROM THE LEE COUNTY SIGNAL SHOP, THE EQUIPMENT SHALL BE SIGNED OUT BY THE CONTRACTOR REPRESENTATIVE AS COMPLETE. LEE COUNTY WILL NOT STORE CONTRACTOR EQUIPMENT. UNDER THESE CONDITIONS, LEE COUNTY SIGNALS WILL ASSIST THE CONTRACTOR ON "TURN ON" DAY IN THE FIELD. SHOULD THE CONTRACTOR ELECT TO SETUP, BURN IN, AND TEST THE EQUIPMENT WITHOUT LEE COUNTY ASSISTANCE, A MANUFACTURER'S REPRESENTATIVE SHALL BE ONSITE AT THE CONTRACTOR'S EXPENSE, ON THE DAY OF TURN ON TO ASSIST THE CONTRACTOR AND TO VERIFY PROPER OPERATION.
12. SPECIAL NOTE REGARDING NEW CONTROLLERS: LEE COUNTY RESERVES THE RIGHT TO SUBSTITUTE DIFFERENT CONTROL EQUIPMENT IN THE EVENT THAT DELIVERED EQUIPMENT IS NOT COMPATIBLE WITH THE EXISTING SYSTEM. SINCE SYSTEM UPGRADES MAY BE BEHIND CONTROLLER TECHNOLOGY, AS THE MAINTAINING AGENCY, LEE COUNTY SIGNALS WILL DECIDE EQUIPMENT PLACEMENT, TIMING AND MAY PROVIDE AN ALTERNATE CONTROLLER TEMPORARILY UNTIL FUTURE UPGRADES ARE MADE. IF THERE IS A COST DIFFERENTIAL, PAYMENT WILL BE MADE TO THE CONTRACTOR PER PLAN QUANTITY AND SPECIFICATION.
13. GROUND RODS FOR ELECTRICAL SERVICE, TRAFFIC SIGNAL CABINET, MAST ARMS, PEDESTRIAN POLES, RRFB SHALL BE INSTALLED IN A MINIMUM 8" X 8" X 12" PULL BOX, THESE PULL BOXES ARE CONSIDERED INCIDENTAL TO GROUNDING. REFER TO SECTION 3 AND SECTION 4 OF LEE COUNTY SPECIFICATIONS.
14. TEMPORARY DETECTION AND MAINTENANCE: CONTRACTOR SHALL PROVIDE AND MAINTAIN FULLY ACTUATED VEHICLE DETECTION AT EXISTING, TEMPORARY, AND NEW SIGNALIZED INTERSECTION FOR THE DURATION OF THE ENTIRE PROJECT.

SEVERAL OPTIONS ARE AVAILABLE TO THE CONTRACTOR FOR TEMPORARY VEHICLE DETECTION:
 - a. MAINTAIN AND/OR RECUT LOOPS AS NECESSARY.
 - b. INSTALL CONTRACTOR OWNED TEMPORARY VIDEO DETECTION.
 - c. INSTALL THE PERMANENT CAMERAS THAT MAY BE CALLED OUT ON THE PLANS FOR TEMPORARY USE DURING CONSTRUCTION. THE CONTRACTOR CAN RELOCATE THESE CAMERAS TO THEIR PERMANENT LOCATION AT THE APPROPRIATE TIME. SHOULD THE CONTRACTOR CHOOSE OPTION 3, LEE COUNTY WILL NOT BE RESPONSIBLE FOR ANY DAMAGE TO THE VIDEO CAMERAS DURING THE PROJECT. THE CAMERAS SHALL BE SUBJECT TO FINAL INSPECTION AND SHALL BE IN GOOD WORKING ORDER.

ADDITIONALLY, ALL EXISTING SIGNAL PHASES, ANY PHASES ACTIVE DURING CONSTRUCTION, AND ALL NEW OR MODIFIED PHASES RESULTING FROM NEW CONSTRUCTION SHALL HAVE DETECTION FULLY MAINTAINED AND OPERATIONAL DURING THE DURATION OF THE PROJECT. ONLY DETECTION APPROVED BY LEE COUNTY DOT TRAFFIC AND OPERATES PROPERLY IN THE "PRESENCE" MODE MAY BE USED. MOTION DETECTION SUCH AS MICROWAVE PULSE DETECTION IS PROHIBITED.

NO ADDITIONAL COMPENSATION WILL BE ALLOWED, UNLESS SPECIFICALLY CALLED OUT IN THE PLANS FOR ANY OF THE ABOVE OPTIONS. MICROWAVE DETECTION OR PULSE DETECTION SHALL NOT BE USED IN LEE COUNTY FOR PRESENCE DETECTION DUE TO OPERATIONAL PROBLEMS AND FAILURE TO DETECT STOPPED VEHICLES.
14. NEW SIGNALS OR SOP: ALL NEW SIGNALS OR EXISTING SIGNALS WITH A NEW SOP SHALL HAVE VMS BOARDS ON ALL APPROACHES 48 HOURS PRIOR TO PRE FLASH, FULL OPERATION, OR NEW SOP. LEE COUNTY DOT TRAFFIC REPRESENTATIVE SHALL BE PRESENT FOR: FLASH MODE ACTIVATION, FULL OPERATION, OR NEW SOP.
15. PRE-FLASH: PRIOR TO ACTIVATING FLASH MODE AT NEW SIGNALS, INSPECTION WILL BE REQUIRED TO ENSURE THE INTERSECTION IS READY TO BE ENERGIZED. ACTIVATION OF FLASH MODE SHALL BE DONE ON MONDAY, TUESDAY, WEDNESDAY, OR THURSDAY BETWEEN THE HOURS OF 9:00 AM - 11:00 AM. PLACE ALL NEW SIGNAL INSTALLATIONS (NO EXISTING SIGNALS) IN FLASH FOR A MINIMUM OF 72 HOURS NOT TO EXCEED 168 HOURS UNLESS EOR OR LEE COUNTY DOT TRAFFIC APPROVES IN WRITING. IF SIGNAL CANNOT GO INTO FULL OPERATION AFTER 168 HOURS THE SIGNAL MUST BE TURNED BACK OFF AND SIGNAL INDICATIONS COVERED.
16. FULL OPERATION: ONCE THE PRE-FLASH REQUIREMENT HAS BEEN SATISFIED, THE INTERSECTION CAN BE PLACED INTO FULL OPERATION UNLESS PRIME CONTRACTOR OR LEE COUNTY DOT TRAFFIC STATES OTHERWISE IN WRITING. FULL OPERATION SHALL BE DONE ON TUESDAY, WEDNESDAY, OR THURSDAY BETWEEN THE HOURS OF 9:00 AM - 11:00 AM UNLESS FALLS ON A HOLIDAY OR SPECIAL EVENTS.
17. TRAFFIC SIGNAL & STREET LIGHTING INSPECTIONS:
 - A. ALL TRAFFIC SIGNAL & STREET LIGHTING INSPECTIONS MUST BE SCHEDULED VIA EMAIL AT LCDOTPROJECTS@LEEGOV.COM TWO WEEKS IN ADVANCE OF SCHEDULED PRE-FLASH ACTIVATION, FULL OPERATION, SOP CHANGE, FINAL INSPECTION, PUNCH LIST INSPECTIONS.
 - B. THE VENDOR SHALL CONFIGURE ALL VIDEO/RADAR DETECTION BEFORE THE FINAL INSPECTION TAKES PLACE, FAILURE TO DO SO WILL RESULT IN RESCHEDULING OF THE INSPECTION.
 - C. INTERSECTION SHALL BE TO FINAL CONFIGURATION PRIOR TO SCHEDULING FINAL INSPECTION.
 - D. CONTRACTOR IS REQUIRED TO BE PRESENT AND/OR HAVE AN AUTHORIZED REPRESENTATIVE ON ALL FORMAL INSPECTIONS. CONTRACTOR SHALL HAVE ALL NECESSARY EQUIPMENT TO COMPLETE THE INSPECTIONS ONSITE AT ALL SIGNAL AND LIGHTING INSPECTIONS. FAILURE TO HAVE A REPRESENTATIVE ONSITE WILL RESULT IN THE CANCELLATION OF THE INSPECTION AND THE WITHHOLDING OF FINAL PAYMENT. AUTHORIZED REPRESENTATIVE IS A PERSON WITH KNOWLEDGE AND ABILITY TO MAKE CORRECTIONS AS NEEDED. THIS IS A REQUIREMENT AND IS NECESSARY TO ELIMINATE COSTLY RE-INSPECTIONS AND TO SPEED UP THE CLOSE OUT OF THE PROJECT.
18. AS-BUILT DRAWINGS: WHEN CONSTRUCTION IS COMPLETE, AS A CONDITION PRECEDENT TO FINAL ACCEPTANCE, PROVIDE SIGNED AND SEALED AS-BUILT DRAWINGS, EITHER BY A STATE OF FLORIDA LICENSED PROFESSIONAL ENGINEER OR A PROFESSIONAL SURVEYOR AND MAPPER CONTRACTOR SHALL PROVIDE A SET OF "AS-BUILT" PLANS IN ELECTRONIC FORM (PDF) TO: LCDOTPROJECTS@LEEGOV.COM
19. WARRANTY: CONTRACTOR'S RESPONSIBILITY FOR WARRANTY REPAIRS, WARRANTY REPLACEMENT, TROUBLESHOOTING, OR OTHER COSTS ASSOCIATED WITH REPAIR OR REPLACEMENT OF TRAFFIC CONTROL SIGNALS AND DEVICES WITHIN THE CONTRACT'S PROJECT LIMITS WILL TERMINATE 90 DAYS AFTER FINAL ACCEPTANCE.
20. DRILL SHAFT: MAST ARM DRILL SHAFT INSPECTIONS ARE REQUIRED BEFORE CONCRETE PLACEMENT. PLEASE REFER TO THE MOST CURRENT FDOT STANDARD SPECIFICATIONS FOR DRILLED SHAFT INSTALLATION, WHICH REQUIRE AN FDOT CERTIFIED DRILLED INSPECTOR TO BE ONSITE DURING THE ENTIRE PROCESS. USE CASING WHEN NECESSARY TO ENSURE SHAFT INTEGRITY. CONCRETE STRAIN POLE EXCAVATIONS WILL ALSO REQUIRE INSPECTION. WHEN USING THE "WETHOLE" METHOD, THE CONCRETE SHALL BE PLACED FROM THE BOTTOM UP, USING EITHER A CONCRETE PUMP OR TREMIE TUBE METHOD OR AS SPECIFIED IN THE PLANS BY THE EOR. NO FREE FALLING CONCRETE SHALL BE ALLOWED. ALL FDOT GUIDELINES FOR CONCRETE QA/QL SHALL BE ADHERED TO. TWENTY-FOUR (24) HOURS' NOTICE IS REQUIRED TO THE INSPECTOR SHOWN IN THE PLAN SET GENERAL NOTES. SHOULD THE INFORMATION BE MISSING, THE CONTRACTOR IS HEREBY DIRECTED TO CALL LEE COUNTY SIGNALS AT 239-533-9500 AND ASK FOR THE SIGNAL INSPECTION DEPARTMENT.
1. ANY PRIVATE OR PUBLIC PROPERTY AFFECTED BY THIS WORK SHALL BE RESTORED TO A CONDITION EQUAL TO OR BETTER THAN EXISTING CONDITIONS. CONTRACTOR TO EXERCISE CAUTION WHEN REPLACING DRIVEWAYS, CONSTRUCTING SWALES, GRADING, ETC. TO AVOID CONFLICT WITH SEPTIC SYSTEM DRAIN FIELDS. AT NO ADDITIONAL COST, THE CONTRACTOR IS RESPONSIBLE FOR REPAIRING ANY DAMAGE TO EXISTING FACILITIES ABOVE OR BELOW GROUND TO A CONDITION EQUAL OR BETTER THAN EXISTING THAT MAY OCCUR AS A RESULT OF THE WORK PERFORMED BY THE CONTRACTOR.

REVISIONS				DAVID J. ALLEN, P.E. P.E. LICENSE NUMBER 58540 STANTEC CONSULTING SERVICES, INC. 3905 CRESCENT PARK DRIVE RIVERVIEW, FLORIDA 33578	LEE COUNTY DEPARTMENT OF TRANSPORTATION			GENERAL NOTES (2)	SHEET NO.
DATE	DESCRIPTION	DATE	DESCRIPTION		ROAD NAME	LEE COUNTY CIP NO.	FINANCIAL PROJECT ID		
					LEE BLVD.	21-00011	N/A		

GENERAL NOTES (CONT.)

2. THE CONTRACTOR SHALL UTILIZE A PROFESSIONAL LAND SURVEYOR LICENSED IN THE STATE OF FLORIDA TO LOCATE AND FLAG ALL PROPERTY CORNERS PRIOR TO CONSTRUCTION AND FINAL ENGINEERING INSPECTION AND CERTIFICATION. IT SHALL BE THE CONTRACTOR'S RESPONSIBILITY TO HAVE PROPERTY CORNERS, WHICH HAVE BEEN LOST DURING CONSTRUCTION, REESTABLISHED BY A PROFESSIONAL LAND SURVEYOR LICENSED IN THE STATE OF FLORIDA. ALL (P.R.M'S) IRONS AND MONUMENTS SHOWN ON THE PLANS OR FOUND SHALL BE PRESERVED. ANY PUBLIC LAND CORNERS WITHIN LIMITS OF CONSTRUCTION SHALL BE PROTECTED. IF ANY CORNER MONUMENT IS IN DANGER OF BEING DESTROYED OR DISTURBED, THE CONTRACTOR SHALL NOTIFY THE PROJECT ENGINEER WITHOUT DELAY.
3. DISCREPANCIES IN FIELD CONDITIONS, PLAN CONDITIONS, OR CODES SHALL BE BROUGHT TO THE ATTENTION OF THE ENGINEER IMMEDIATELY.
4. THESE DRAWINGS DO NOT INCLUDE INSTRUCTIONS FOR THE CONTRACTOR REGARDING CONSTRUCTION SAFETY. DURING THE CONSTRUCTION AND/OR MAINTENANCE OF THIS PROJECT, ALL SAFETY REGULATIONS ARE TO BE ENFORCED BY THE CONTRACTOR. THE CONTRACTOR OR HIS REPRESENTATIVE SHALL BE RESPONSIBLE FOR THE CONTROL AND SAFETY OF THE PUBLIC AND THE SAFETY OF THEIR PERSONNEL.
5. WHEN WORKING ON OR ADJACENT TO EXISTING STRUCTURES OR APPURTENANCES, ALL PRECAUTIONS FOR CONTINUED SAFETY OF STRUCTURES AND ALL PERSONNEL SHALL BE EXERCISED IN ACCORDANCE WITH THE FLORIDA TRENCH SAFETY ACT AT A MINIMUM.
6. THE CONTRACTOR SHALL MAINTAIN A COPY OF THE APPROVED PLANS AND PERMITS AT THE CONSTRUCTION SITE AT ALL TIMES. THE CONTRACTOR IS RESPONSIBLE TO READ AND UNDERSTAND ALL PERMITS INCLUDING ALL GENERAL AND SPECIAL CONDITIONS. AT OWNER'S OR ENGINEER'S REQUEST, THE CONTRACTOR SHALL PROVIDE APPROPRIATE DOCUMENTATION THAT ALL CONSTRUCTION RELATED CONDITIONS ARE ADHERED TO.
7. NO DEWATERING PERMIT HAS BEEN PURSUED BY THE COUNTY FOR THE PROPOSED CONSTRUCTION. IN THE EVENT THAT DEWATERING IS REQUIRED, THE CONTRACTOR SHALL APPLY FOR ALL APPLICABLE WATER USE PERMITS AT THAT TIME.
8. IT HAS BEEN THE EXPERIENCE OF THE DEPARTMENT, WITH PROJECTS CONSTRUCTED WITHIN THIS GENERAL GEOGRAPHIC AREA, THAT ALTHOUGH PRELIMINARY BORINGS DID NOT INDICATE A CONSTANT PRESENCE OF ROCK, ROCK WAS ENCOUNTERED WHILE PERFORMING UNDERGROUND INSTALLATIONS. THEREFORE, THE CONTRACTOR SHOULD CONSIDER THE INCREASED COST OF ALL UNDERGROUND WORK ACTIVITIES WHILE PREPARING HIS BID. ALL COST OF ROCK EXCAVATION SHALL BE INCLUDED IN THE APPROPRIATE ITEMS OF WORK CONTAINED WITHIN THE CONTRACT. NO EXTRA COMPENSATION OR TIME EXTENSION WILL BE ALLOWED FOR ADDITIONAL WORK DIRECTLY ASSOCIATED WITH THE SPLITTING, EXCAVATION, CRUSHING, DISPOSAL, REPLACEMENT OF DISPLACED VOLUME OF EXTRACTED ROCK WITH FILL MATERIALS OR SPECIAL HANDLING OF ROCK.

UTILITY NOTES

1. THE LOCATIONS OF THE UTILITIES SHOWN IN THE PLANS (INCLUDING THOSE DESIGNATED Vv Vh AND Vvh) ARE BASED ON LIMITED INVESTIGATION TECHNIQUES AND SHOULD BE CONSIDERED APPROXIMATE ONLY. THE VERIFIED LOCATIONS OR ELEVATIONS APPLY ONLY AT THE POINTS SHOWN. INTERPOLATIONS BETWEEN THESE POINTS HAVE NOT BEEN VERIFIED.
2. REFER TO THE ROADWAY PLANS FOR THE LIST OF UTILITY OWNERS WITHIN THE PROJECT LIMITS.

PAY ITEM NOTES

639-1-122, 639-3-11:
THE MAIN SERVICE DISCONNECT NEAR THE POWER SOURCE SHALL BE A 125 AMP SQUARE D Q0148L125GRB. THE SECONDARY DISCONNECT SHALL BE A 125 AMP SQUARE D Q0124L125PGRB.

646-1-11:
THE INSTALLATION OF THE PEDESTAL PRECAST FOUNDATIONS FOR 646-1-11 SHALL BE COORDINATED WITH CONCRETE SIDEWALK. THE PRECAST FOUNDATIONS SHALL NOT BE INSTALLED UNTIL THE CONCRETE SIDEWALK IS READY TO BE FORMED. IN THE EVENT THE PRECAST FOUNDATIONS ARE IN CONFLICT WITH UTILITIES OR THE PREFORMED CONCRETE FOUNDATIONS DO NOT WORK FOR SIDEWALK CONFIGURATION, A PEDESTAL SPREADFOOTER SHALL BE INSTALLED AT NO ADDITIONAL COST TO THE COUNTY. REFER TO FDOT INDEX 646-001 FOR DETAILS ON INCORPORATION THE PRECAST FOUNDATION INTO SIDEWALK CURB.

665-1-12:
IF PEDESTRIAN PUSH BUTTON EXTENSIONS ARE REQUIRED TO MEET THE 10" REACH, THEY SHALL FURNISHED AND INSTALLED AT NO ADDITIONAL COST TO THE COUNTY.

670-5-110:
THE TRAFFIC CONTROLLER ASSEMBLY SHALL BE A ECONOLITE/SAFETRAN ATCC-HV 32/48 - LEE COUNTY (ATCC1214-LY).

684-1-1:
THE MANAGED LAYER 2 SWITCH SHALL BE A CISCO IE 2000 WITH THE FOLLOWING COMPONENTS:
A. CISCO IE-3300-8T2X-E
B. IEM-3300-6T2S
C. SFP OPTIC MODULE SFP-10G-LR-PRO
D. CISCO POWER SUPPLY PWR-IE65W-PC-AC=

685-1-11:
THE UPS SHALL BE A ECONOLITE ZINCBLUE2 XRT WITH NO PIGGYBACK CABINET AND SHALL BE INSTALLED INTO THE ATCC CABINET.

715-7-11:
THIS PAY ITEM INCLUDES FURNISHING AND INSTALLING AN ENCLOSURE WITH LIGHTING CONTACTOR AND PHOTO CONTROL AS PER LEE COUNTY SPECIFICATIONS. THE ENCLOSURE SHALL BE A SQUARE D NIGHT MASTER SHORT VERSION, STAINLESS STEEL, 8903SMH61V02.

715-11-111:
THE LUMINAIRE SHALL BE A HOLOPHANE MGLEDM SERIES WITH P7 LED PERFORMANCE PACKAGE, 3000K COLOR TEMPERATUR AND MVOLT AUTO SENSING VOLTAGE. THE OPTICS DISTRIBUTION IS DESIGNATED ON THE LIGHTING DATA TABLE. THIS PAY ITEM INCLUDES THE HOUSESIDE SHIELD AND THE FIELD ADJUSTABLE OUTPUT MODULE. EACH LUMINAIRE SHALL HAVE THE MODULE SWITCH DIALED TO THE APPROPRIATE ADJUSTABLE OUTPUT (AO) POSITION AS SPECIFIED ON LIGHTING DATA TABLE AND LEGEND SHEET.

715-65-156, 715-65-256, 715-66-156:
THIS PAY ITEM SHALL INCLUDE A UTILITY CONFLICT STYLE ALUMINUM POLE WITH TRANSFORMER BASE, FOUNDATION, WIRING, AND A LED LUMINAIRE SPECIFIED ON THE LIGHTING DATA TABLE AND LEGEND SHEET.

THE LUMINAIRE SHALL BE A HOLOPHANE MGLEDM SERIES WITH P7 LED PERFORMANCE PACKAGE, 3000K COLOR TEMPERATURE AND MVOLT AUTO SENSING VOLTAGE. THE OPTICS DISTRIBUTION IS DESIGNATED ON THE LIGHTING DATA TABLE. THE LUMINAIRE SHALL INCLUDE A HOUSESIDE SHIELD AND THE FIELD ADJUSTABLE OUTPUT MODULES. EACH LUMINAIRE SHALL HAVE THE MODULE SWITCH DIALED TO THE APPROPRIATE ADJUSTABLE OUTPUT (AO) POSITION AS SPECIFIED ON LIGHTING DATA TABLE AND LEGEND SHEET. FOR ADDITIONAL INFORMATION ON THE UTILITY CONFLICT POLE, SEE FDOT STANDARD PLANS INDEX 715-003. THE LUMINAIRE SHALL BE POWERED FROM THE LIGHTING LOAD CENTER. ALL LIGHTING WILL BE ON A DESIGNATED LIGHTING CIRCUIT BREAKER AND CONTROLLED BY A PHOTOCCELL AT THE LIGHTING LOAD CENTER.

FOR LIGHT POLES SPECIFIED WITH A SPECIAL FOUNDATION, SEE FDOT STANDARD PLANS INDEX 715-002. FOR LOCATIONS NEAR UTILITIES, HAND DIG THE FIRST FOUR FEET. NO SCREW TYPE BASE FOUNDATIONS SHALL BE USED.

<u>CONDUIT AND PULL BOX LEGEND</u>	
HV	= HIGH VOLTAGE
SHV	= SIGNAL HIGH VOLTAGE
PHV	= PEDESTRIAN SIGNAL HIGH VOLTAGE
LV	= LOW VOLTAGE
PLV	= PEDESTRIAN DETECTOR
ILD	= INDUCTIVE LOOP DETECTION
FO	= FIBER OPTIC
PS	= POWER SERVICE
SL	= STREET LIGHTING
SP	= SPARE

REVISIONS				DAVID J. ALLEN, P.E. P.E. LICENSE NUMBER 58540 STANTEC CONSULTING SERVICES, INC. 3905 CRESCENT PARK DRIVE RIVERVIEW, FLORIDA 33578	LEE COUNTY DEPARTMENT OF TRANSPORTATION			SHEET NO. T-6
DATE	DESCRIPTION	DATE	DESCRIPTION		ROAD NAME	LEE COUNTY CIP NO.	FINANCIAL PROJECT ID	
					LEE BLVD.	21-00011	N/A	

GENERAL NOTES (3)

LIGHTING DATA TABLE

INTERSECTION LIGHTING DESIGN CRITERIA

POLE NO.	CIRCUIT	STATION	DIST. OR ARM	LUMINAIRE WATTAGE	** AO POSITION NO.	DISTRIBUTION TYPE	MOUNTING HEIGHT	POLE TYPE	FOUNDATION TYPE	POLE OFFSET TO CENTER OF POLE	PAY ITEM
1	A-1	104+62.4 CL LEE BLVD	15'	79	2	FT	30'	UTILITY CONFLICT	STANDARD	83.7' LT	715-65-156
2	A-1	105+42.5 CL LEE BLVD	15'	112	3	WR	35'	UTILITY CONFLICT	STANDARD	60.5' LT	715-65-256
3	A-1	105+44.8 CL LEE BLVD	15'	79	2	WR	30'	UTILITY CONFLICT	SPECIAL	51.6' RT	715-66-156
MA-2	A-1	104+88.2 CL LEE BLVD	10'	79	2	FT	40'	MAST ARM	---	70.3' RT	* 715-11-111
5	A-1	104+27.1 CL LEE BLVD	15'	49	1	FT	30'	UTILITY CONFLICT	STANDARD	89.8' RT	715-65-156
6	A-1	103+45.9 CL LEE BLVD	15'	112	3	FT	30'	UTILITY CONFLICT	SPECIAL	51.3' RT	715-66-156
7	A-1	103+09.2 CL LEE BLVD	15'	49	1	FT	30'	UTILITY CONFLICT	SPECIAL	51.5' LT	715-66-156
MA-3	A-1	104+00.5 CL LEE BLVD	10'	79	2	FT	40'	MAST ARM	---	65.0' LT	* 715-11-111

AVERAGE HORIZONTAL INTENSITY 1.5 FOOT CANDLES
 AVERAGE VERTICAL INTENSITY 1.5 FOOT CANDLES
 UNIFORMITY RATIO AVG./MIN. 4:1 OR LESS
 MAX./MIN. 10:1 OR LESS
 VEILING LUMINANCE RATIO 0.4:1 OR LESS
 WIND SPEED 160 MPH

LEGEND

SYMBOLS

DESCRIPTION



HOLOPHANE MONGOOSE MEDIUM LED LUMINAIRE WITH P7 PERFORMANCE PACKAGE, 3000K COLOR TEMPERATURE, FORWARD THROW OR WIDE THROW DISTRIBUTION (AS STATED ON THE ADJACENT TABLE), FIELD ADJUSTABLE OUTPUT MODULE AND HOUSESIDE SHIELDS. LUMINAIRE SHALL BE WIRED FOR 240 VOLT OPERATION AND THE HOUSING SHALL BE GRAY. NO TILT. POLE MOUNTING HEIGHT IS SPECIFIED ON THE ADJACENT TABLE. POLE TYPE IS A UTILITY CONFLICT STYLE LIGHT POLE. THE BRACKET ARM IS 16 FEET. LIGHTING BASIS OF DESIGN USED HOLOPHANE MONGOOSE MEDIUM MGLEDM PHOTOMETRIC CURVE NUMBER MGLEDM_P7_30K_XXXXX_FT_HSS FOR A FORWARD THROW AND MGLEDM_P7_30K_XXXXX_WR_HSS FOR A WIDE THROW. DUE TO DIMMING, THE LUMINAIRE WATTAGE VARIES AND IS REPRESENTED ON THE ADJACENT TABLE AS WELL AS THE ADJUSTABLE OUTPUT POSITION.



HOLOPHANE MONGOOSE MEDIUM LED LUMINAIRE WITH P7 PERFORMANCE PACKAGE, 3000K COLOR TEMPERATURE, FORWARD THROW DISTRIBUTION, FIELD ADJUSTABLE OUTPUT MODULE AND HOUSESIDE SHIELDS. LUMINAIRE SHALL BE WIRED FOR 240 VOLT OPERATION AND THE HOUSING SHALL BE GRAY. NO TILT. LUMINAIRE IS MOUNTED ON THE PROPOSED MAST ARM ON A 10-FOOT ARM AT A MOUNTING HEIGHT OF 40 FEET. LIGHTING BASIS OF DESIGN USED HOLOPHANE MONGOOSE MEDIUM MGLEDM PHOTOMETRIC CURVE NUMBER MGLEDM_P7_30K_XXXXX_FT_HSS. DUE TO DIMMING, THE LUMINAIRE WATTAGE VARIES AND IS REPRESENTED ON THE ADJACENT TABLE AS WELL AS THE ADJUSTABLE OUTPUT POSITION.



SCHEDULE 40 PVC CONDUIT WITH THWN-2 CONDUCTORS INSIDE (CONDUCTOR SIZE AS SHOWN ON PLAN SHEETS). RUN ONE (1) #6 AWG COPPER BOND CONDUCTOR (XLP GREEN INSULATION) INSIDE CONDUIT WITH OTHER CONDUCTORS. ALL FUTURE USE CONDUIT IS TO BE ONLY POPULATED WITH PULL AND LOCATE WIRES.

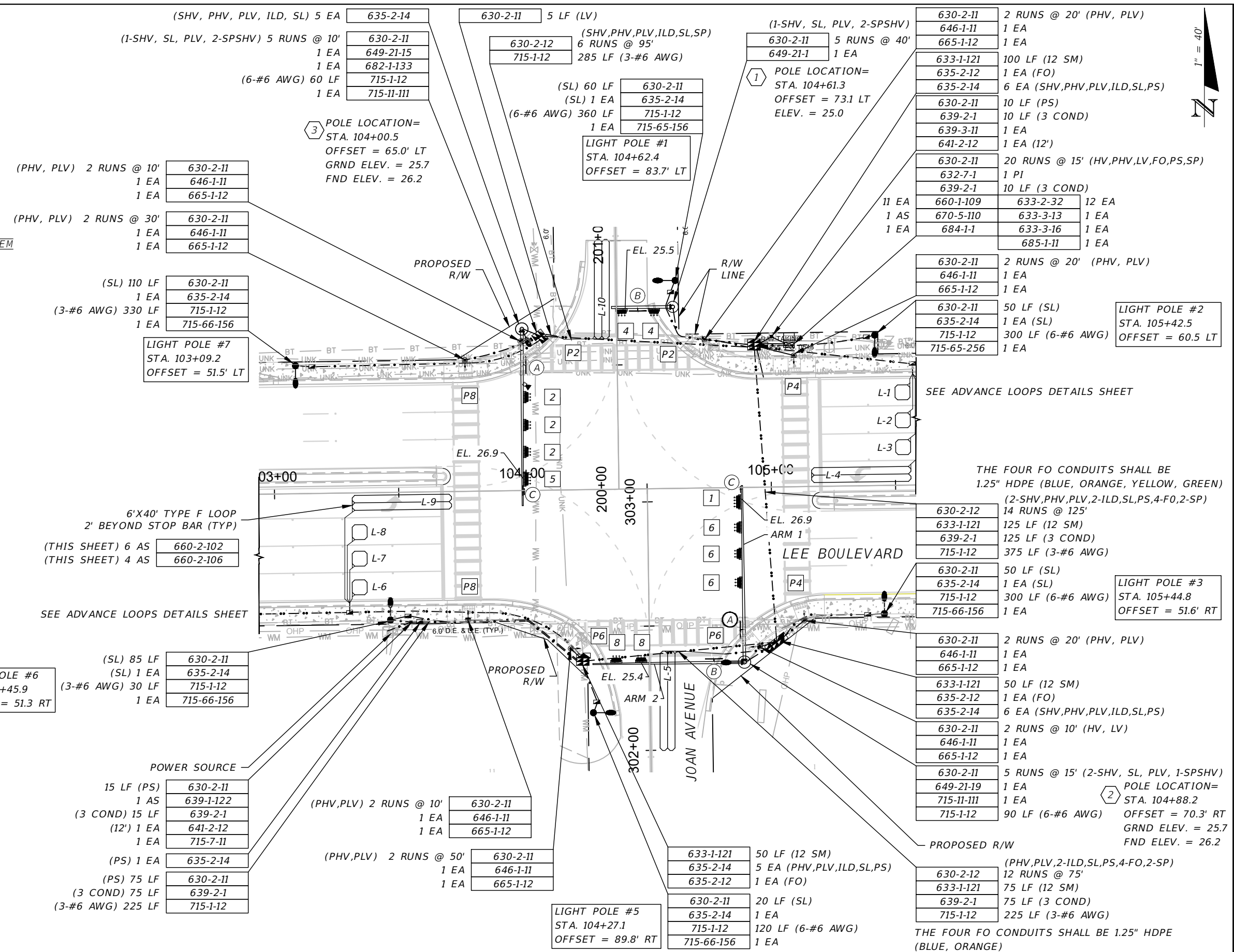
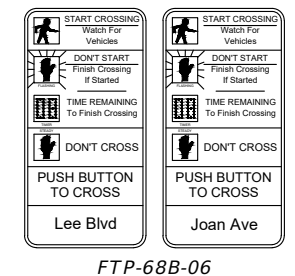
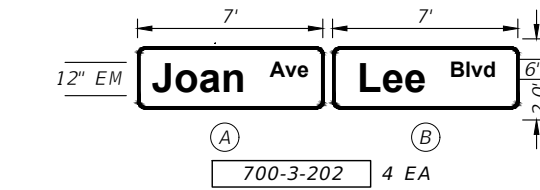
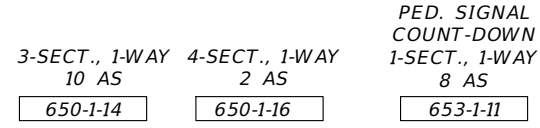
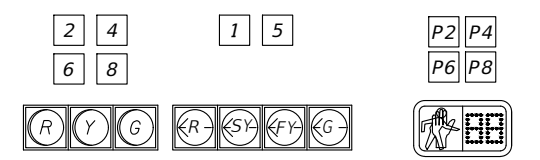


HDPE CONDUIT, DIRECTIONAL BORE WITH THWN-2 CONDUCTORS INSIDE (CONDUCTOR SIZE AS SHOWN ON PLAN SHEETS). EXTEND CONDUIT BEYOND EDGE OF PAVEMENT TO PULL BOXES. RUN ONE (1) #6 AWG COPPER BOND CONDUCTOR (XLP GREEN INSULATION) INSIDE CONDUIT WITH OTHER CONDUCTORS. ALL FUTURE USE AND SPARE CONDUIT IS TO BE ONLY POPULATED WITH PULL AND LOCATE WIRES.

* PAY ITEM TO FURNISH AND INSTALL A LUMINAIRE ON A PROPOSED MAST ARM ASSEMBLY.
 ** AO POSITION NUMBER IS THE DIMMER SELECTION ON THE LUMINAIRE FIELD ADJUSTABLE OUTPUT MODULE.

THE OFFICIAL RECORD OF THIS SHEET IS THE ELECTRONIC FILE DIGITALLY SIGNED AND SEALED UNDER RULE 61G15-23.004, F.A.C.

REVISIONS				DAVID J. ALLEN, P.E. P.E. LICENSE NUMBER 58540 STANTEC CONSULTING SERVICES, INC. 3905 CRESCENT PARK DRIVE RIVERVIEW, FLORIDA 33578	LEE COUNTY DEPARTMENT OF TRANSPORTATION			LIGHT POLE DATA AND LEGEND	SHEET NO.
DATE	DESCRIPTION	DATE	DESCRIPTION		ROAD NAME	LEE COUNTY CIP NO.	FINANCIAL PROJECT ID		
						LEE BLVD.	21-00011		N/A



REVISIONS			
DATE	DESCRIPTION	DATE	DESCRIPTION

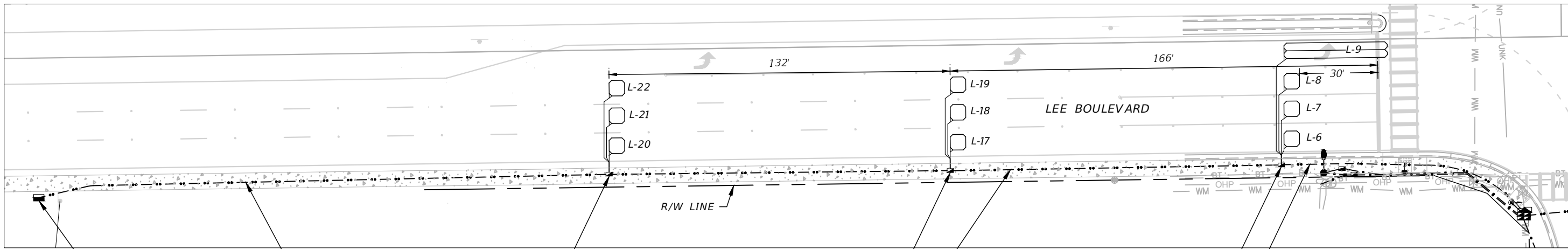
DAVID J. ALLEN, P.E.
P.E. LICENSE NUMBER 58540
STANTEC CONSULTING SERVICES, INC.
3905 CRESCENT PARK DRIVE
RIVERVIEW, FLORIDA 33578

LEE COUNTY DEPARTMENT OF TRANSPORTATION		
ROAD NAME	LEE COUNTY CIP NO.	FINANCIAL PROJECT ID
LEE BLVD.	21-00011	N/A

SIGNALIZATION PLAN (1)

SHEET NO.
T-8

THE OFFICIAL RECORD OF THIS SHEET IS THE ELECTRONIC FILE DIGITALLY SIGNED AND SEALED UNDER RULE 61G15-23.004, F.A.C.



633-1-121	100 LF (12 SM)
633-2-31	12 EA
633-3-11	1 EA
633-3-12	1 EA
633-3-14	1 EA
635-2-13	1 EA (FO)

5 LF	630-2-11
(ILD) 1 EA	635-2-14

630-2-12	4 RUNS @ 225' (FO)
633-1-121	225 LF (12 SM)

THE FOUR FO CONDUITS SHALL BE 1.25" HDPE (BLUE, ORANGE, YELLOW, GREEN); POPULATE AS PER COUNTY SPECS

5 LF	630-2-11
(ILD) 1 EA	635-2-14

(4-FO, 1-ILD) 5 RUNS @ 480'	630-2-12
(12 SM) 480 LF	633-1-121

5 LF	630-2-11
(ILD) 1 EA	635-2-14

(4-FO, 2-ILD) 6 RUNS @ 360'	630-2-12
(12 SM) 360 LF	633-1-121

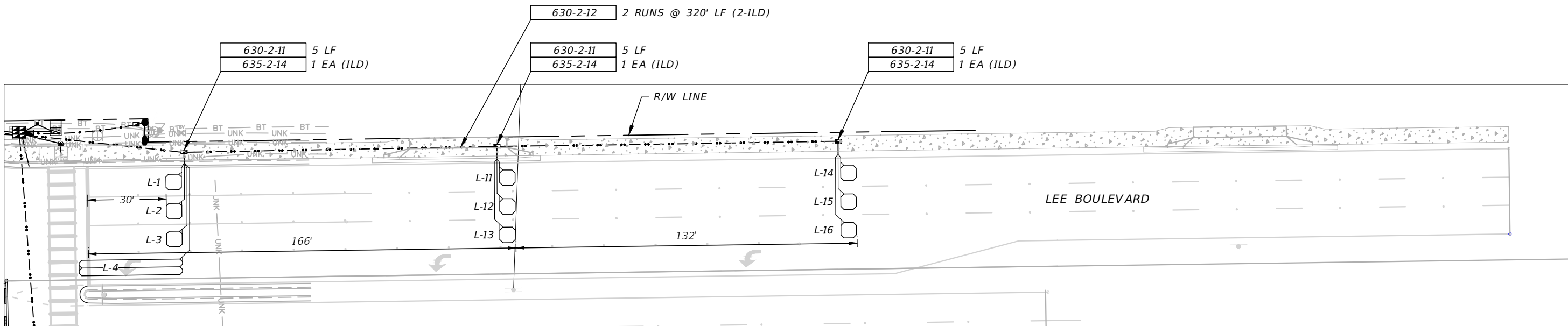
THE FOUR FO CONDUITS SHALL BE 1.25" HDPE (BLUE, ORANGE, YELLOW, GREEN); POPULATE AS PER COUNTY SPECS; 2-2" CONDUIT FOR LOOPS

INSTALLATION NOTES

- COORDINATE ALL FIBER SPLICING WORK WITH LEE COUNTY DOT AT LEAST SEVEN BUSINESS DAYS PRIOR TO START OF WORK TO CONFIRM SCHEDULE AND FIBER CONNECTIONS.
- PROVIDE AT LEAST TWO BUSINESS DAYS NOTICE PRIOR TO PERFORMING WORK THAT AFFECTS EXISTING FIBER CONNECTIVITY.
- REPLACE EXISTING FIBER PULL BOX WITH SPLICE VAULT.

660-2-102 12 AS (THIS SHEET, LOOPS L-11 - L-22)

LOOPS L-1, L-2, L-3, L-4, L-6, L-7, L-8, AND L-9 ARE PAID FOR ON SHEET T-8.



630-2-11	5 LF
635-2-14	1 EA (ILD)

630-2-12 2 RUNS @ 320' LF (2-ILD)

630-2-11	5 LF
635-2-14	1 EA (ILD)

630-2-11	5 LF
635-2-14	1 EA (ILD)

ADVANCE LOOPS DETAILS

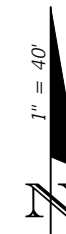
REVISIONS			
DATE	DESCRIPTION	DATE	DESCRIPTION

DAVID J. ALLEN, P.E.
P.E. LICENSE NUMBER 58540
STANTEC CONSULTING SERVICES, INC.
3905 CRESCENT PARK DRIVE
RIVERVIEW, FLORIDA 33578

LEE COUNTY DEPARTMENT OF TRANSPORTATION		
ROAD NAME	LEE COUNTY CIP NO.	FINANCIAL PROJECT ID
LEE BLVD.	21-00011	N/A

SIGNALIZATION PLAN (2)

SHEET NO.
T-9



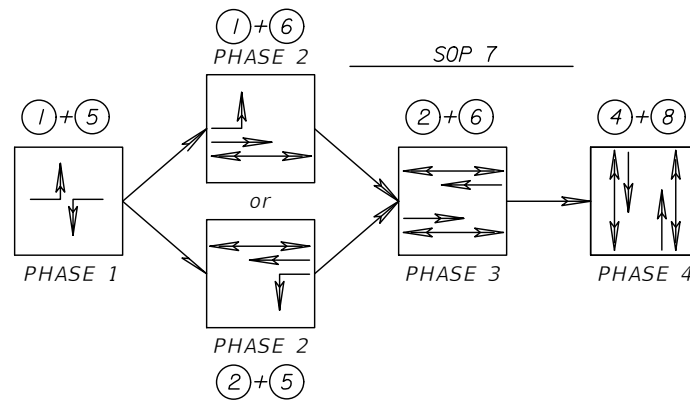
THE OFFICIAL RECORD OF THIS SHEET IS THE ELECTRONIC FILE DIGITALLY SIGNED AND SEALED UNDER RULE 61G15-23.004, F.A.C.

CONTROLLER OPERATION

1. MAJOR STREET IS LEE BOULEVARD, MINOR STREET IS JOAN AVENUE.
2. MINOR STREET SHALL FLASH RED, ALL OTHER MOVEMENTS SHALL FLASH YELLOW.
3. SIGNAL SHALL OPERATE AS SHOWN BELOW.

NOTES:

1. POSTED SPEED LIMIT FOR LEE BOULEVARD IS 45 MPH. POSTED SPEED LIMIT FOR JOAN AVENUE IS 30 MPH FOR THE NORTH APPROACH AND ASSUMED TO BE 30 MPH FOR THE SOUTH APPROACH.



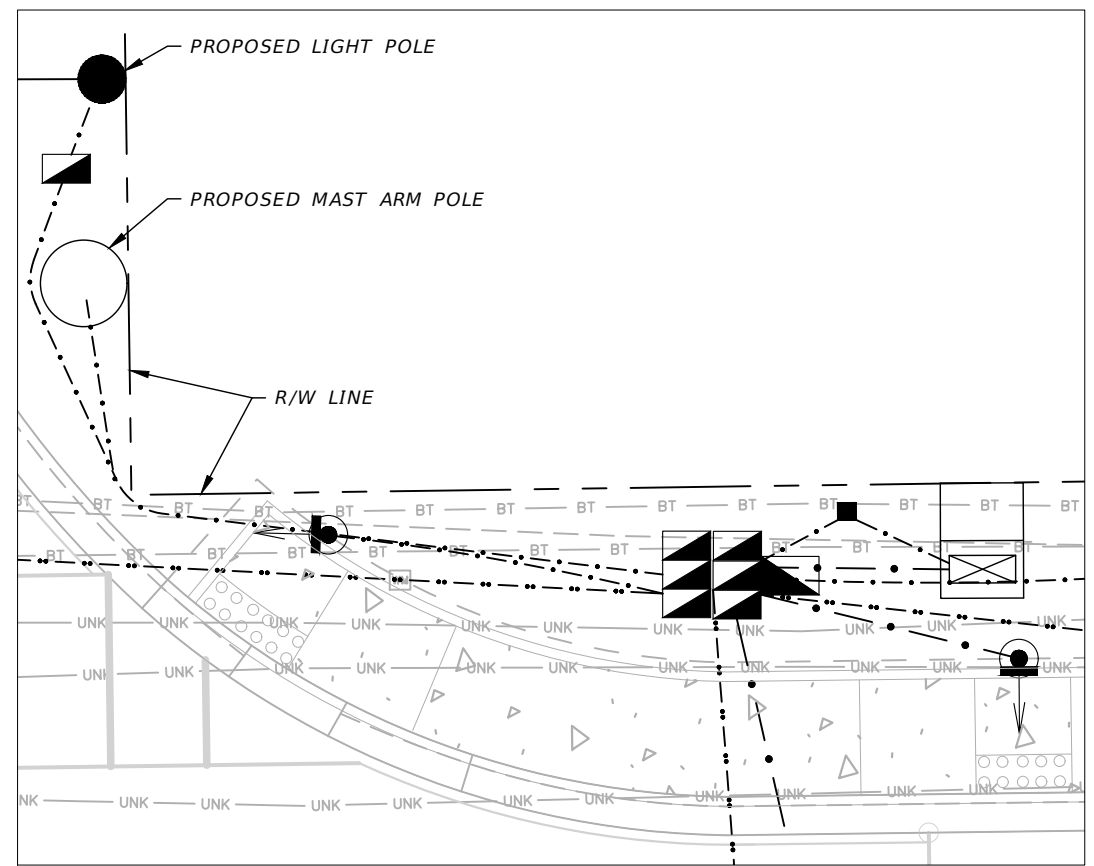
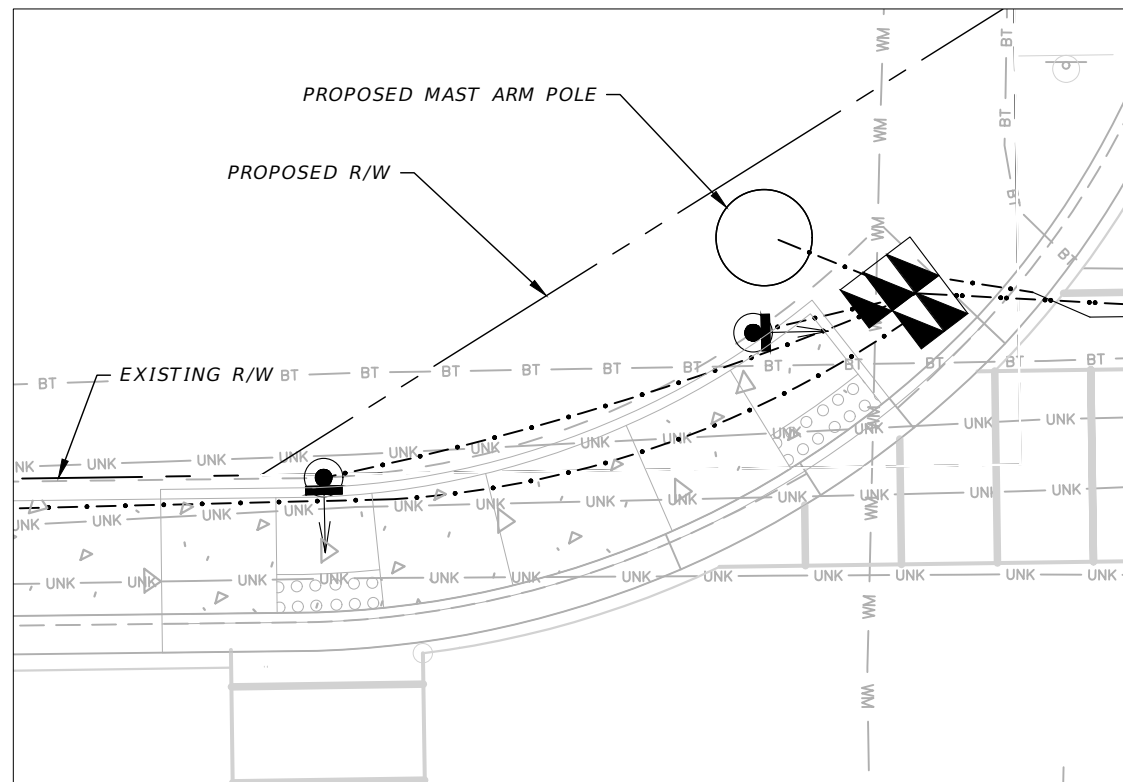
CONTROLLER TIMINGS								
TIMING FUNCTION	1	2	3	4	5	6	7	8
MOVEMENT NUMBER	1	2	3	4	5	6	7	8
MINIMUM GREEN	7	20		7	7	20		7
EXTENSION	2.5	2.5		2.5	2.5	2.5		2.5
MAXIMUM GREEN 1	12	50		20	12	50		20
MAXIMUM GREEN 2								
YELLOW CLEARANCE	4.8	4.8		3.7	4.8	4.8		3.7
ALL RED	3.2	3.7		2.5	3.7	3.7		2.5
PEDESTRIAN WALK		7		7		7		7
PED. CLEARANCE		18		26		18		25
RECALL		MIN				MIN		

TIMINGS ARE INITIAL AND MAY REQUIRE FIELD ADJUSTING AS DIRECTED BY PROJECT ENGINEER.

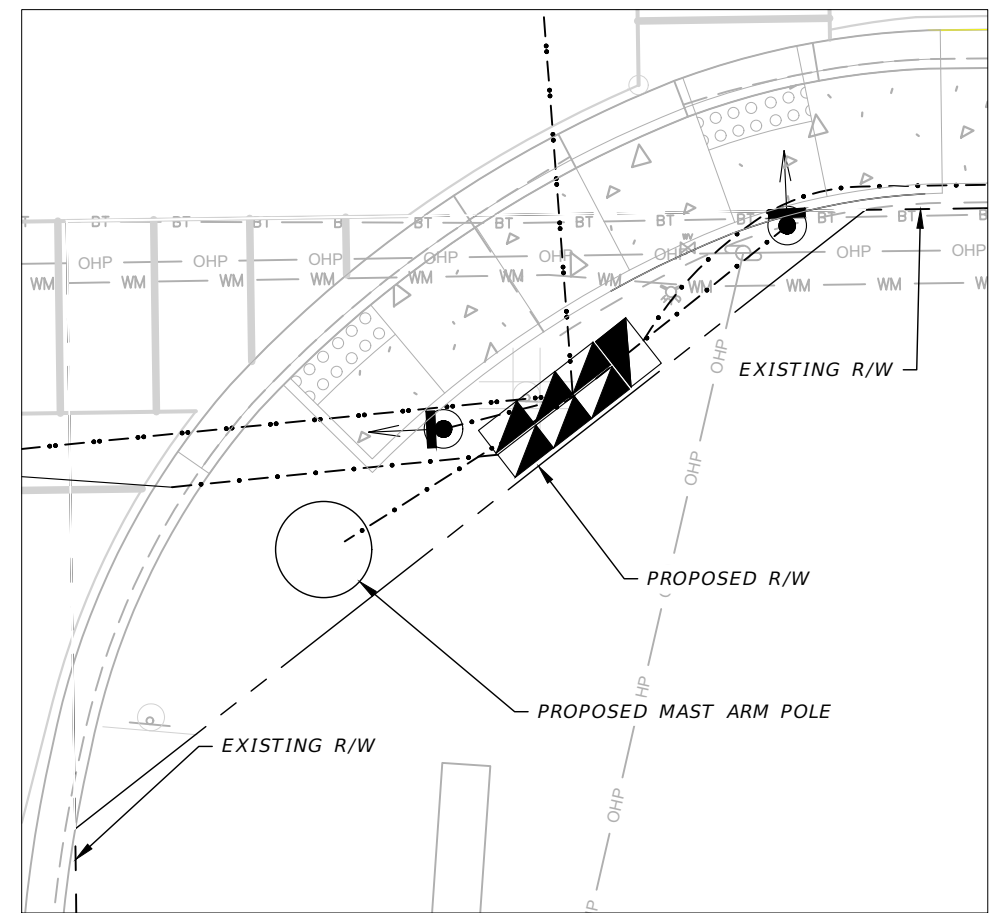
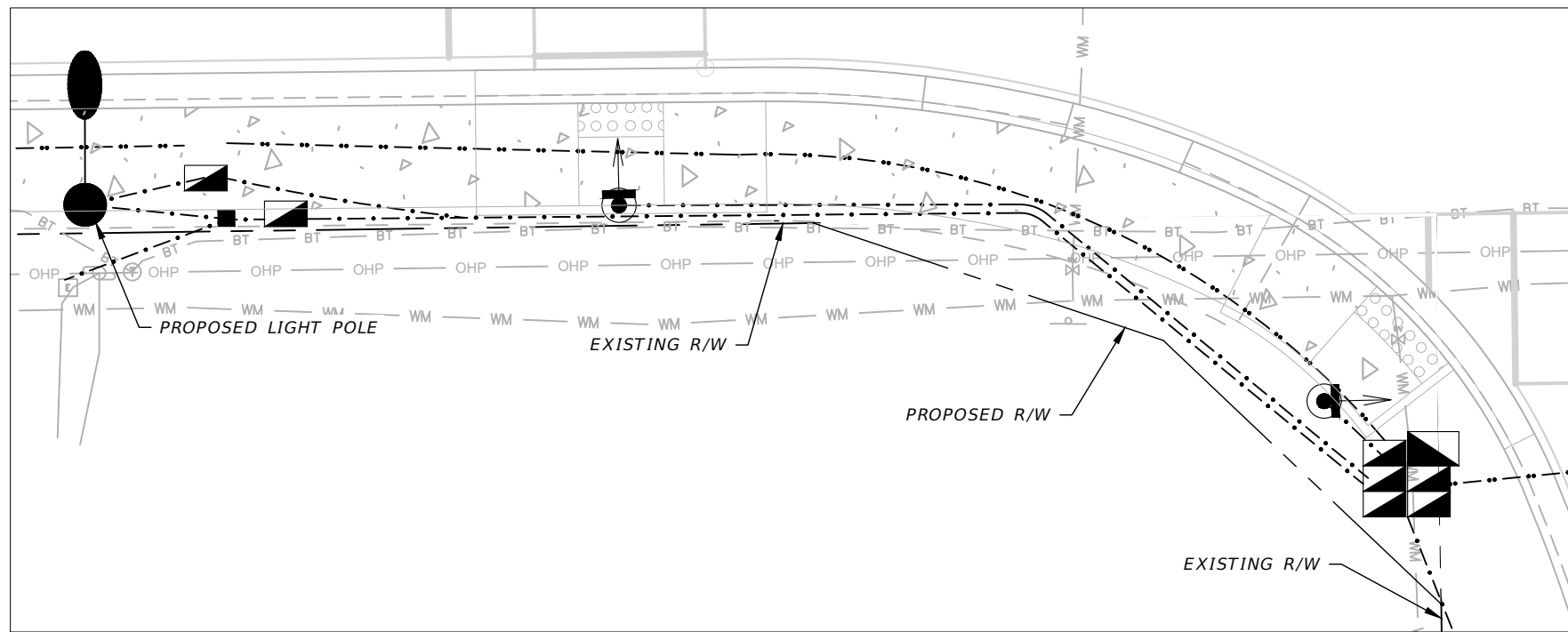
DETECTORS FOR LOOPS					
LOOP	NO. OF LOOPS	NO. OF NEW DETS.	CHANNEL NO.	CONNECT TO MOVEMENT	DELAY TIME (SEC)
L-1	1	1	1	2	0.0
L-2	1		2	2	0.0
L-3	1		3	2	0.0
L-4	1		4	5	0.0
L-5	1	1	1	4	0.0
L-6	1		2	6	0.0
L-7	1		3	6	0.0
L-8	1		4	6	0.0
L-9	1	1	1	1	0.0
L-10	1		2	8	0.0
L-11	1		3	2	0.0
L-12	1		4	2	0.0
L-13	1	1	1	2	0.0
L-14	1		2	2	0.0
L-15	1		3	2	0.0
L-16	1		4	2	0.0
L-17	1	1	1	6	0.0
L-18	1		2	6	0.0
L-19	1		3	6	0.0
L-20	1		4	6	0.0
L-21	1	1	1	6	0.0
L-22	1		2	6	0.0
L-23	1		3	NOT USED	0.0
L-24	1		4	NOT USED	0.0

DELAY TIME IS INITIAL AND MAY REQUIRE FIELD ADJUSTING AS DIRECTED BY PROJECT ENGINEER

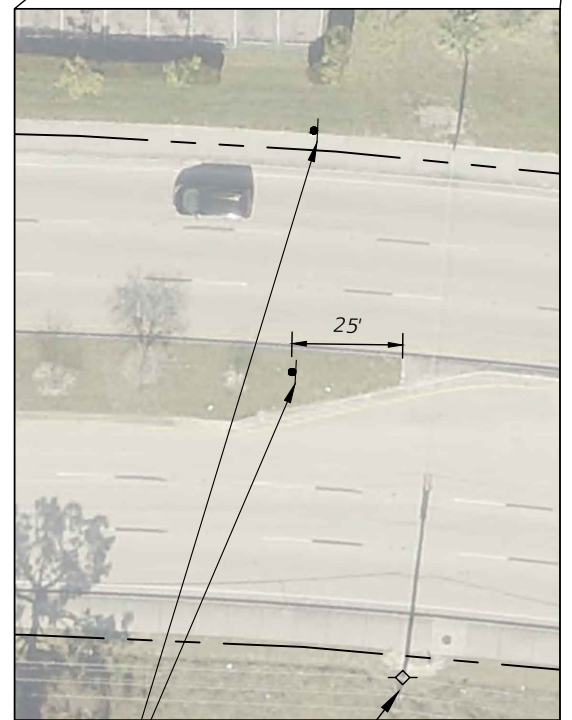
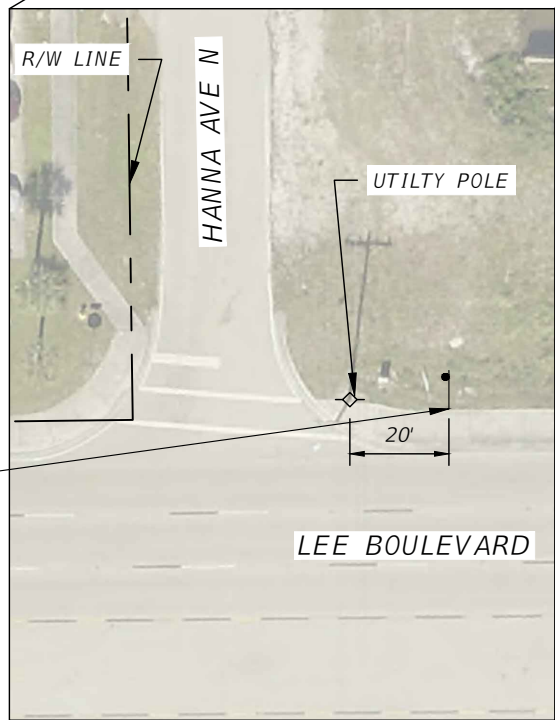
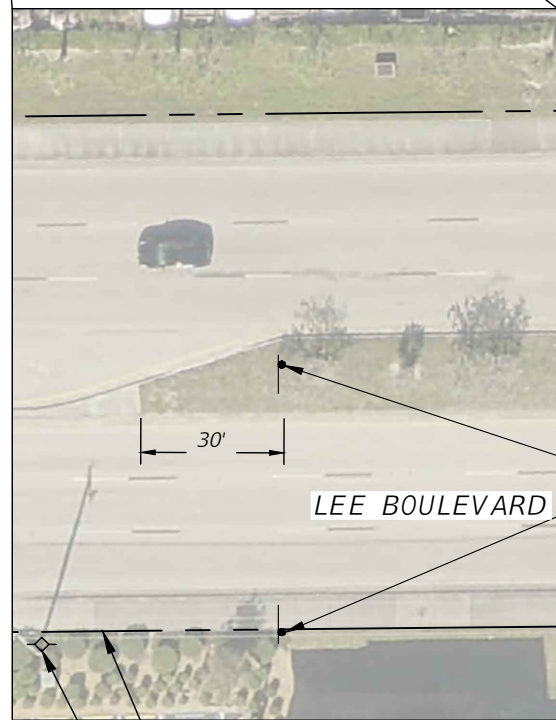
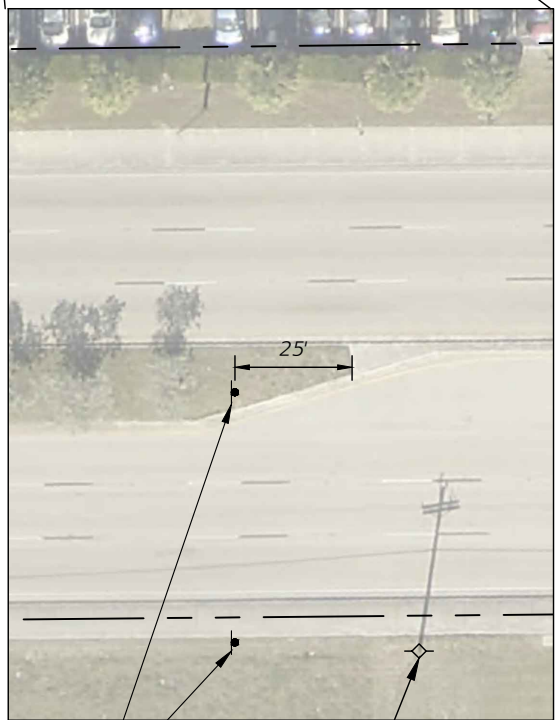
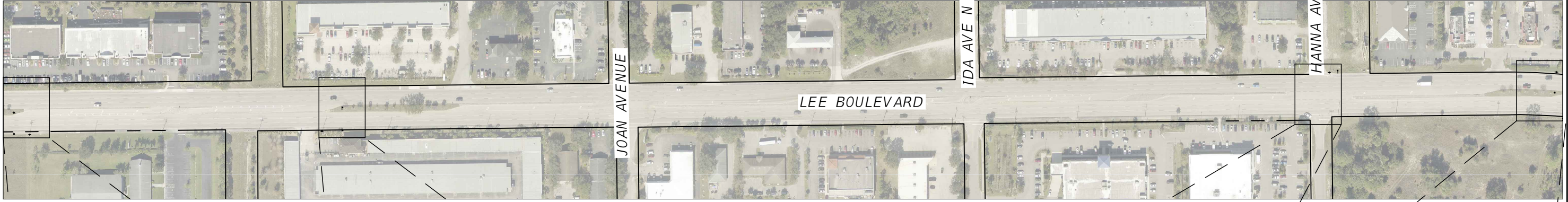
REVISIONS				DAVID J. ALLEN, P.E. P.E. LICENSE NUMBER 58540 STANTEC CONSULTING SERVICES, INC. 3905 CRESCENT PARK DRIVE RIVERVIEW, FLORIDA 33578	LEE COUNTY DEPARTMENT OF TRANSPORTATION			SHEET NO. T-10
DATE	DESCRIPTION	DATE	DESCRIPTION		ROAD NAME	LEE COUNTY CIP NO.	FINANCIAL PROJECT ID	
					LEE BLVD.	21-00011	N/A	



NOTE:
REFER TO STANDARD PLANS INDEX 646-001 FOR PLACEMENT OF PEDESTALS.



REVISIONS				DAVID J. ALLEN, P.E. P.E. LICENSE NUMBER 58540 STANTEC CONSULTING SERVICES, INC. 3905 CRESCENT PARK DRIVE RIVERVIEW, FLORIDA 33578	LEE COUNTY DEPARTMENT OF TRANSPORTATION			<i>SIGNALIZATION PLAN (4)</i>	SHEET NO.
DATE	DESCRIPTION	DATE	DESCRIPTION		ROAD NAME	LEE COUNTY CIP NO.	FINANCIAL PROJECT ID		
					LEE BLVD.	21-00011	N/A		T-11

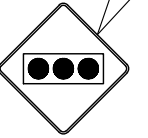


SIGN C
72" X 36"
700-1-12 2 AS

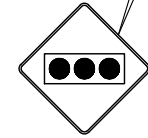
SIGN C
72" X 36"
700-1-12 1 AS

**Joan Ave
NEXT SIGNAL**

**Joan Ave
NEXT SIGNAL**



700-1-11 2 AS
W3-3
30" X 30"



700-1-11 2 AS
W3-3
30" X 30"

REVISIONS			
DATE	DESCRIPTION	DATE	DESCRIPTION

DAVID J. ALLEN, P.E.
P.E. LICENSE NUMBER 58540
STANTEC CONSULTING SERVICES, INC.
3905 CRESCENT PARK DRIVE
RIVERVIEW, FLORIDA 33578

LEE COUNTY DEPARTMENT OF TRANSPORTATION		
ROAD NAME	LEE COUNTY CIP NO.	FINANCIAL PROJECT ID
LEE BLVD.	21-00011	N/A

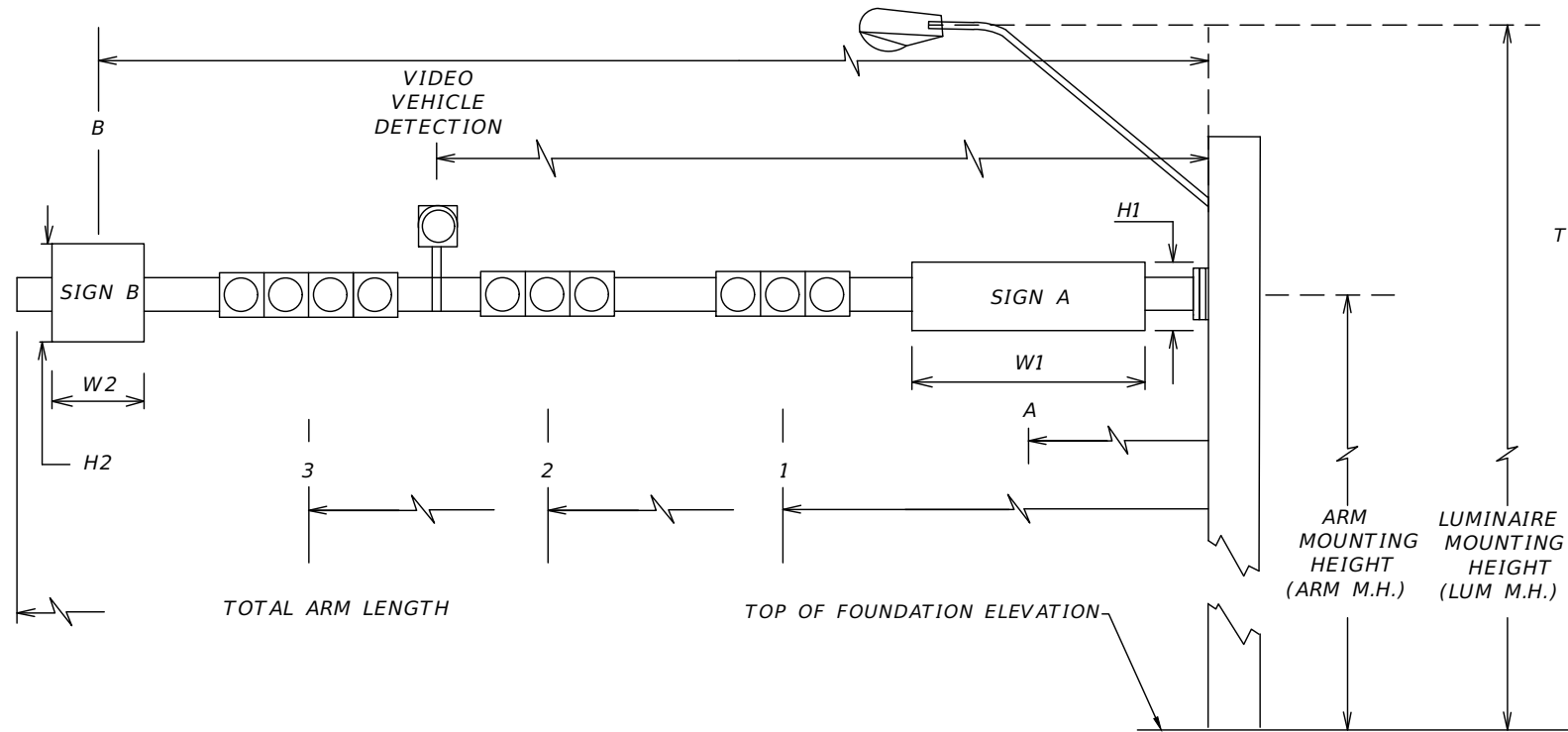
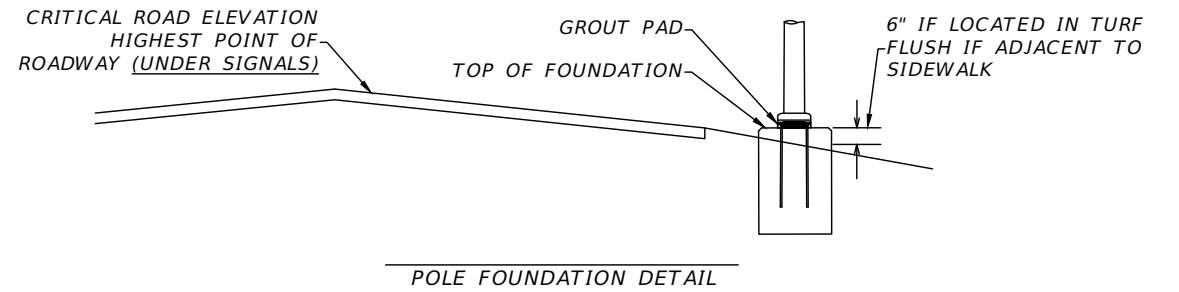
ADVANCE SIGNS

SHEET NO.
T-12

THE OFFICIAL RECORD OF THIS SHEET IS THE ELECTRONIC FILE DIGITALLY SIGNED AND SEALED UNDER RULE 61G15-23.004, F.A.C.

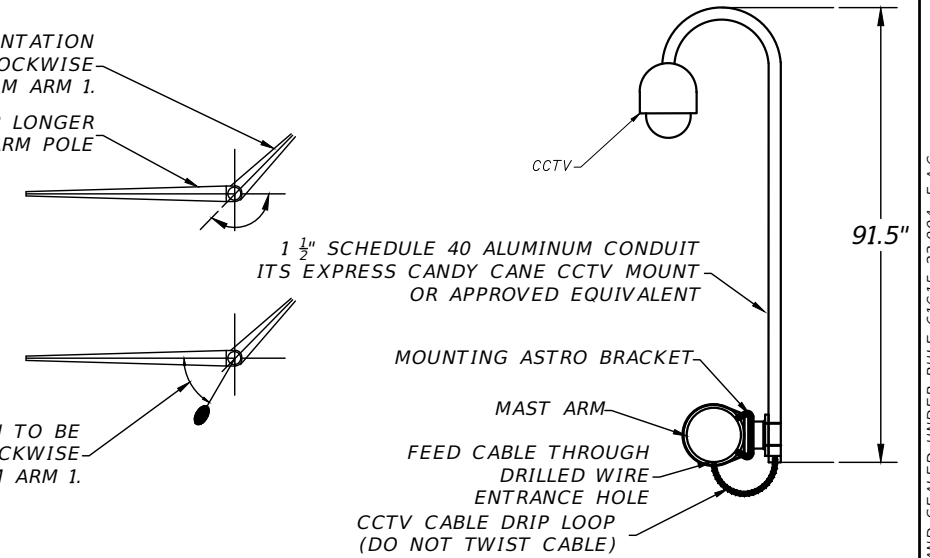
SPECIAL NOTES

- A. EACH POLE AND MAST ARM SHALL BE IDENTIFIED WITH A PERMANENT ONE INCH (1") HIGH ENGRAVED OR IMPRESSED MARK WHICH BEARS THE POLE IDENTIFICATION NUMBER SHOWN ON THE PLANS.
- B. ANCHOR BOLT COVERS (ORNAMENTAL, NON-ORNAMENTAL, AND/OR PAINTED) SHALL BE GALVANIZED STEEL OR CAST ALUMINUM AND SHALL BE SECURED BY A MINIMUM OF TWO (2) THREADED FASTENERS. THE BOLT COVERS SHALL BE OF SUFFICIENT SIZE SO THAT THERE IS NO GAP BETWEEN ITSELF AND THE POLE SHAFT.
- C. IT SHALL BE THE CONTRACTOR'S RESPONSIBILITY TO FIELD VERIFY ALL ELEVATIONS LISTED IN THE PLANS.
- D. ALL MAST ARM POLES SHALL BE GALVANIZED, NON-PAINTED.



ARM #2- DOUBLE ARM POLE ORIENTATION TO BE MEASURED IN A COUNTER CLOCKWISE DIRECTION FROM ARM 1.
 ARM #1-SINGLE ARM OR LONGER ARM FOR DOUBLE ARM POLE

LUMINAIRE ROTATION TO BE MEASURED IN A COUNTER CLOCKWISE DIRECTION FROM ARM 1.



CCTV MOUNTING DETAIL

SHEET NO. - POLE - ARM NO.	LUMINAIRE MOUNTING HEIGHT	LUMINAIRE ARM LENGTH	ANGLE OF LUMINAIRE ARM
T-8-2-2	40	10	90
T-8-3-1	40	10	20

FIELD INSTALLATION AND MAST ARM DESIGN DATA							* DENOTES NUMBER OF SECTIONS IN SIGNAL HEAD ASSEMBLY																VID DET OR CCTV																	
FDOT ID NO.	SHEET-POLE NO.	LOCATION BY STA.		GROUND ELEVATION	TOP OF FOUND. ELEVATION	RDWY ARM NO.	CROWN ELEV.	SIGNAL DATA																DISTANCE FROM POLE / HEIGHT AND WIDTH OF SIGN																
		SIGNAL V/H	BACK PLATES Y/N					PED. SIGNAL Y/N	DISTANCE FROM POLE																															
								1	*	2	*	3	*	4	*	5	*	TOTAL ARM LENGTH	ARM M.H.	ANGLE BETWEEN DUAL ARMS	LUM ANGLE	LUM MTG HT	A	H1	W1	B	H2	W2	C	H3	W3	D	H4	W4						
N/A	T-8-1	104+61.3	73.1 LT	25.0	25.5	1	25.5	H	Y	N	6.5	3	19.5	3				24	20.0	---	---	13	2	7																
N/A	T-8-2	104+88.2	70.3 RT	25.7	26.2	1	26.9	H	Y	N	31	3	43	3	54	3	64	4	70	20.0	90	90	40	12	2	7	68.5	3	2.5											
N/A	T-8-2	104+88.2	70.3 RT	---	---	2	25.4	H	Y	N	41	3	51	3				60	20.0	---	---	12	2	7																
N/A	T-8-3	104+00.5	65.0 LT	25.7	26.2	1	26.9	H	Y	N	26	3	37	3	48	3	59	4	70	20.0	---	20	40	12	2	7	64	3	2.5											

DATE		DESCRIPTION		DATE		DESCRIPTION		DAVID J. ALLEN, P.E. P.E. LICENSE NUMBER 58540 STANTEC CONSULTING SERVICES, INC. 3905 CRESCENT PARK DRIVE RIVERVIEW, FLORIDA 33578			LEE COUNTY DEPARTMENT OF TRANSPORTATION ROAD NAME: LEE COUNTY CIP NO.: FINANCIAL PROJECT ID: LEE BLVD. 21-00011 N/A			MAST ARM TABULATION										SHEET NO. T-13	
------	--	-------------	--	------	--	-------------	--	--	--	--	--	--	--	---------------------	--	--	--	--	--	--	--	--	--	-------------------	--

THE OFFICIAL RECORD OF THIS SHEET IS THE ELECTRONIC FILE DIGITALLY SIGNED AND SEALED UNDER RULE 61G15-23.004, F.A.C.

STANDARD MAST ARM ASSEMBLIES DATA TABLE											Table Date 11-01-16
STRUCTURE ID NUMBER	DESIGNATION	FIRST ARM		SECOND ARM		UF (deg)	LL (deg)	POLE			DRILLED SHAFT ID
		ARM ID	FAA (ft.)	ARM ID	SAA (ft.)			POLE ID	UAA (ft.)	UB (ft.)	
T-8-1	A30/S-P1/S-DS/14/5	A30/S	24	-	-	-	-	P1/S	23.0	20.0	DS/14/5.0
T-8-2	A70/D/H-A60/D-P6/D/L-DS/32/S	A70/D/H	-	A60/D	-	90	90	P6/D/L	-	20.0	DS/32/5.0
T-8-3	A70/S-P5/S/L-DS/31/5	A70/S	-	-	-	-	20	P5/S/L	-	20.0	DS/31/5.0

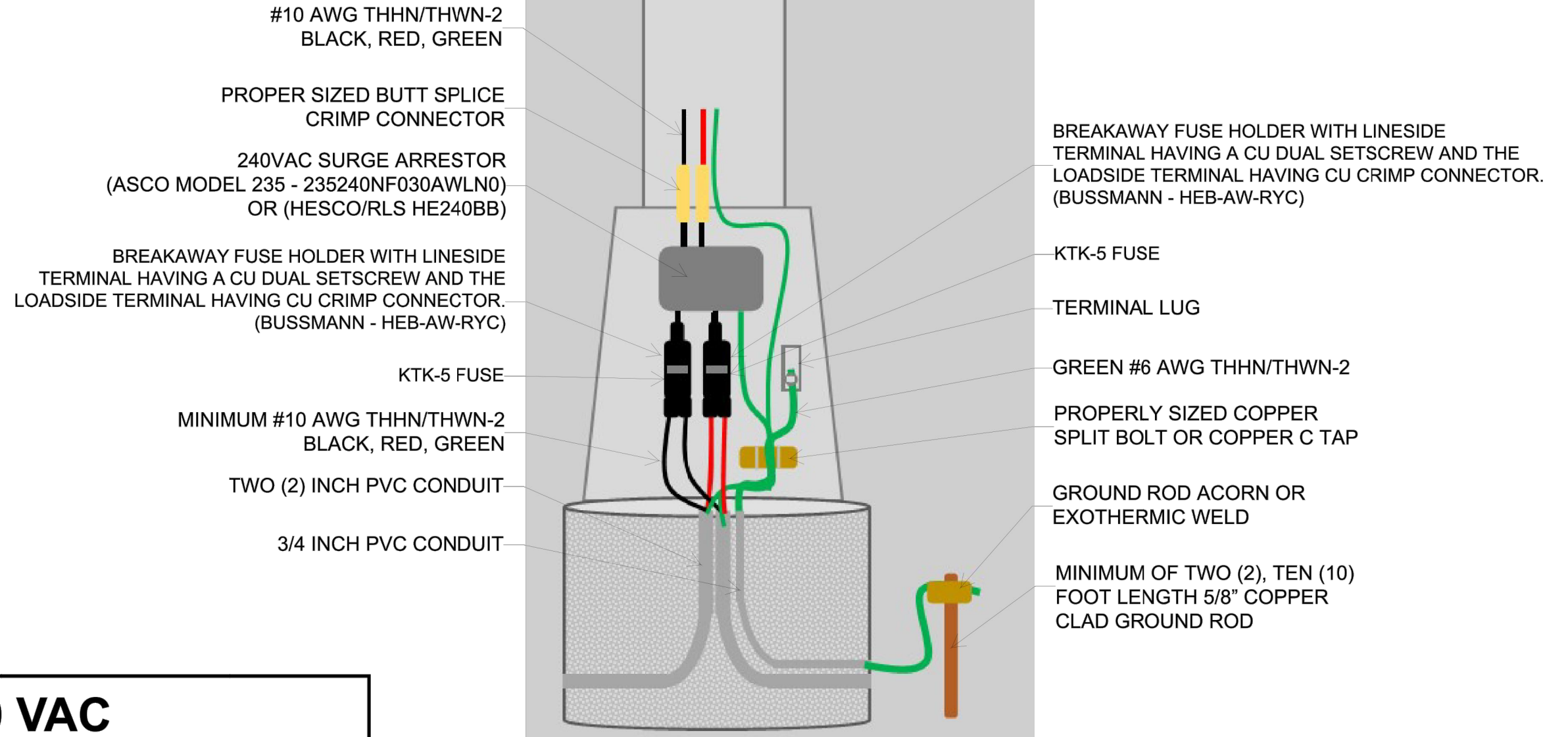
NOTES [Notes Date 11-01-16]:

- If an entry appears in column FAA, a shorter arm is required. This is obtained by removing length from the arm tip and the arm length shortened from FA to FAA. SAA Similar.
- If an entry appears in column UAA, a shorter pole is required. This is obtained by removing length from the pole tip and the pole height shortened from UA to UAA.
- Work this sheet with the Signal Designer's "Mast Arm Tabulation". See "Mast Arm Tabulation" for special instructions that include non-standard Handhole location, paint color, terminal compartment requirement, and pedestrian features.
- Work with Index 649-030 and 649-031.

DRILLED SHAFT								
DRILLED SHAFT ID	DA (FT)	DB (ft.)	RA	RB	RC	RD (in.)	RE	RF (in.)
DS/32/5.0	32	5.0	11	18	10	6	10	9
DS/31/5.0	31	5.0	11	18	10	6	10	9

Work drilled shaft table with with Index 649-030.

REVISED				CHRISTOPHER P. GAMACHE, P.E. P.E. LICENSE NUMBER 82122 STANTEC CONSULTING SERVICES, INC. 380 PARK PLACE BLVD SUITE 300 CLEARWATER, FLORIDA 33759	LEE COUNTY DEPARTMENT OF TRANSPORTATION			STANDARD MAST ASSEMBLIES DATA TABLE	SHEET NO.
DATE	DESCRIPTION	DATE	DESCRIPTION		ROAD NAME	LEE COUNTY CIP NO.	FINANCIAL PROJECT ID		T-14
					LEE BLVD.	21-00011	N/A		



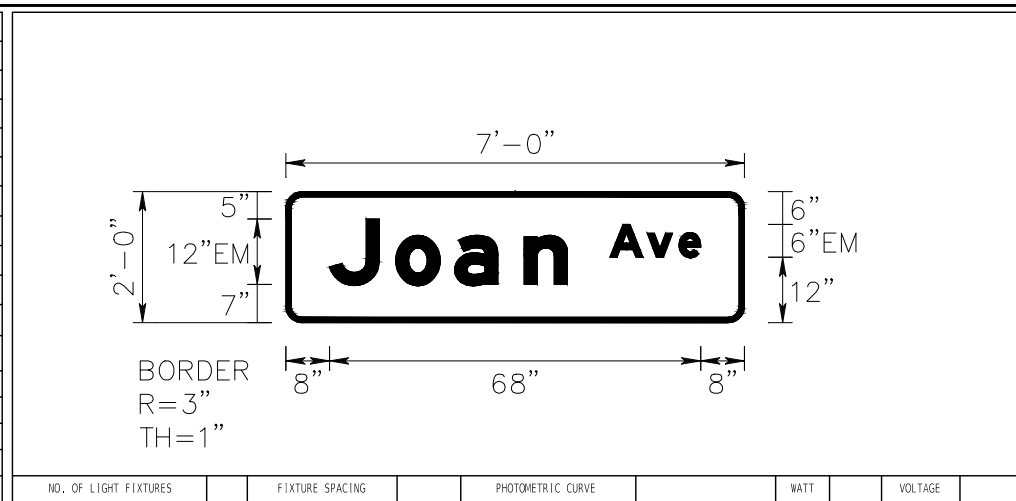
240 VAC

REVISION 11/13/2020	Streetlight Pole Wiring Detail Streetlight T-Base wiring connections	Lee County Department of Transportation - Traffic	INDEX NO. 21
		DRAWN BY: RYAN KIRSCH	

REVISIONS				DAVID J. ALLEN, P.E. P.E. LICENSE NUMBER 58540 STANTEC CONSULTING SERVICES, INC. 3905 CRESCENT PARK DRIVE RIVERVIEW, FLORIDA 33578	LEE COUNTY DEPARTMENT OF TRANSPORTATION			LIGHT POLE WIRING DETAIL	SHEET NO. T-15
DATE	DESCRIPTION	DATE	DESCRIPTION		ROAD NAME	LEE COUNTY CIP NO.	FINANCIAL PROJECT ID		
					LEE BLVD.	21-00011	N/A		

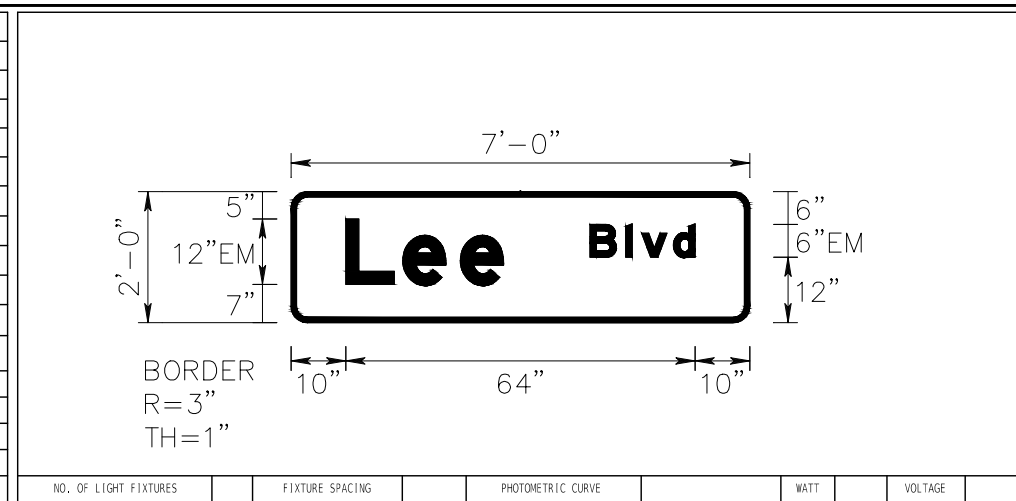
THE OFFICIAL RECORD OF THIS SHEET IS THE ELECTRONIC FILE DIGITALLY SIGNED AND SEALED UNDER RULE 61G15-23.004, F.A.C.

SIGN NAME	A		QTY	2	SIGN NUMBER	STATION(S)
PANEL	BORDER		none			
WIDTH	7'-0"	WIDTH	1"			
HEIGHT	2'-0"	RADII	3"			
LEGEND	White	COLOR	White			
COLOR	Green					
SYMBOL(S)	ANGLE	X	Y	WID	HT	
SIGN NUMBER	NUMBER OF POSTS	CLEARANCE Edge Of Lane	COLUMN SIZE		AVERAGE LENGTH	



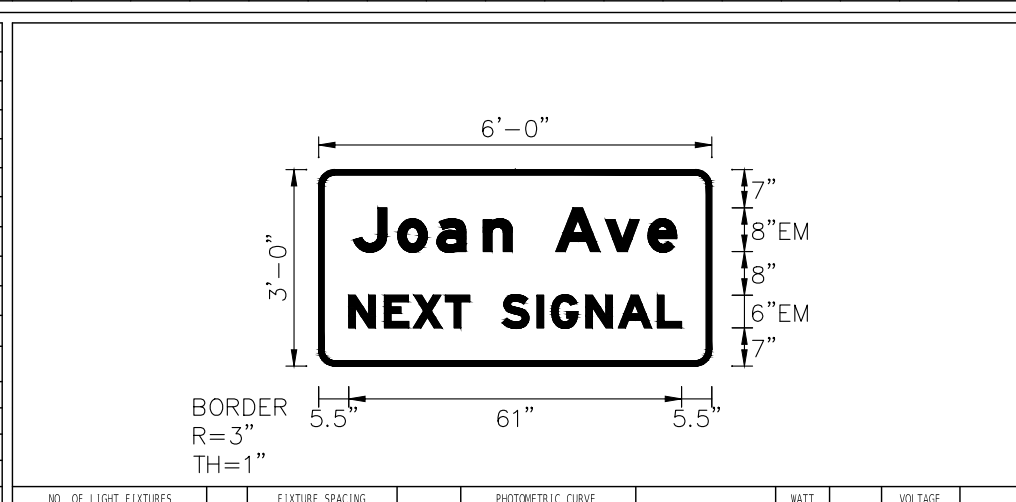
COPY	A v e L										
SPACE	59.4	6.8	5.8	4	8	16.6					
COPY	J o a n L										
SPACE	8	12.1	10.8	12.7	7.9	32.4	43.6				
COPY											
SPACE											
COPY											
SPACE											
COPY											
SPACE											
COPY											
SPACE											

SIGN NAME	B		QTY	2	SIGN NUMBER	STATION(S)
PANEL	BORDER		none			
WIDTH	7'-0"	WIDTH	1"			
HEIGHT	2'-0"	RADII	3"			
LEGEND	White	COLOR	White			
COLOR	Green					
SYMBOL(S)	ANGLE	X	Y	WID	HT	
SIGN NUMBER	NUMBER OF POSTS	CLEARANCE Edge Of Lane	COLUMN SIZE		AVERAGE LENGTH	



COPY	B l v d L										
SPACE	54.7	6.5	2.9	5.8	4	10	19.3				
COPY	L e e L										
SPACE	10	10.4	10.6	7.9	45.1	28.9					
COPY											
SPACE											
COPY											
SPACE											
COPY											
SPACE											

SIGN NAME	C		QTY	2	SIGN NUMBER	STATION(S)
PANEL	BORDER		none			
WIDTH	6'-0"	WIDTH	1"			
HEIGHT	3'-0"	RADII	3"			
LEGEND	White	COLOR	White			
COLOR	Green					
SYMBOL(S)	ANGLE	X	Y	WID	HT	
SIGN NUMBER	NUMBER OF POSTS	CLEARANCE Edge Of Lane	COLUMN SIZE		AVERAGE LENGTH	



COPY	J o a n A v e L											
SPACE	9.6	17.2	23.2	29.5	34.4	42.4	51.1	57.4	52.7			
COPY	N E X T S I G N A L L											
SPACE	5.5	12.1	17.3	23.2	27.7	33.7	40	42.7	49	54.9	62	61
COPY												
SPACE												
COPY												
SPACE												
COPY												
SPACE												

SIGN NAME			QTY		SIGN NUMBER	STATION(S)
PANEL	BORDER					
WIDTH		WIDTH				
HEIGHT		RADII				
LEGEND		COLOR				
COLOR						
SYMBOL(S)	ANGLE	X	Y	WID	HT	
SIGN NUMBER	NUMBER OF POSTS	CLEARANCE Edge Of Lane	COLUMN SIZE		AVERAGE LENGTH	

COPY											
SPACE											
COPY											
SPACE											
COPY											
SPACE											
COPY											
SPACE											

REVISIONS			
DATE	DESCRIPTION	DATE	DESCRIPTION

DAVID J. ALLEN, P.E.
P.E. LICENSE NUMBER 58540
STANTEC CONSULTING SERVICES, INC.
3905 CRESCENT PARK DRIVE
RIVERVIEW, FLORIDA 33578

LEE COUNTY DEPARTMENT OF TRANSPORTATION		
ROAD NAME	LEE COUNTY CIP NO.	FINANCIAL PROJECT ID
LEE BLVD.	21-00011	N/A

<i>GUIDE SIGN WORKSHEET</i>		SHEET NO.
		T-16

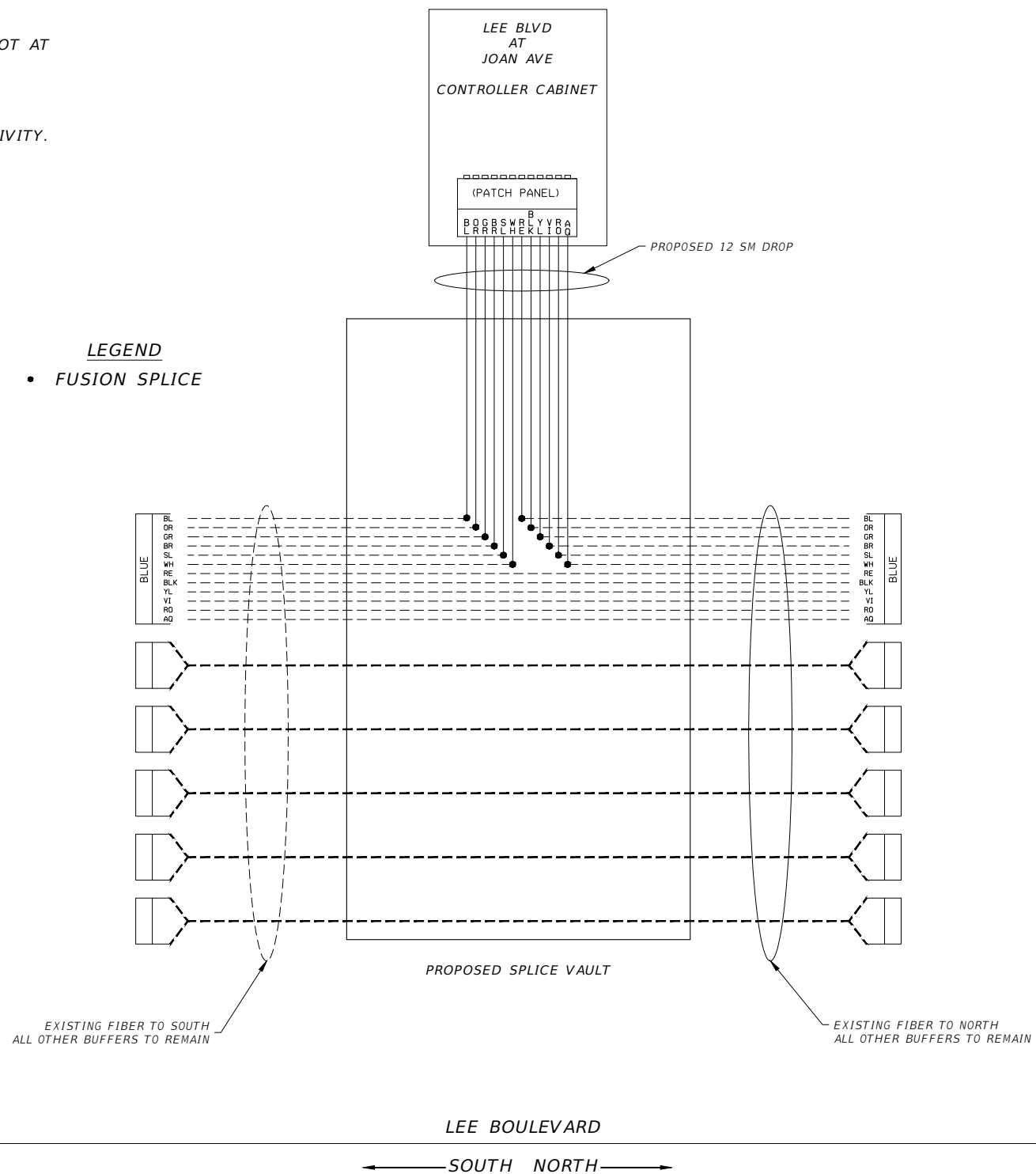
THE OFFICIAL RECORD OF THIS SHEET IS THE ELECTRONIC FILE DIGITALLY SIGNED AND SEALED UNDER RULE 61G15-23.004, F.A.C.

INSTALLATION NOTES

1. COORDINATE ALL FIBER SPLICING WORK WITH LEE COUNTY DOT AT LEAST SEVEN BUSINESS DAYS PRIOR TO START OF WORK TO CONFIRM SCHEDULE AND FIBER CONNECTIONS.
2. PROVIDE AT LEAST TWO BUSINESS DAYS NOTICE PRIOR TO PERFORMING WORK THAT AFFECTS EXISTING FIBER CONNECTIVITY.
3. REPLACE EXISTING FIBER PULL BOX WITH SPLICE VAULT.

LEGEND

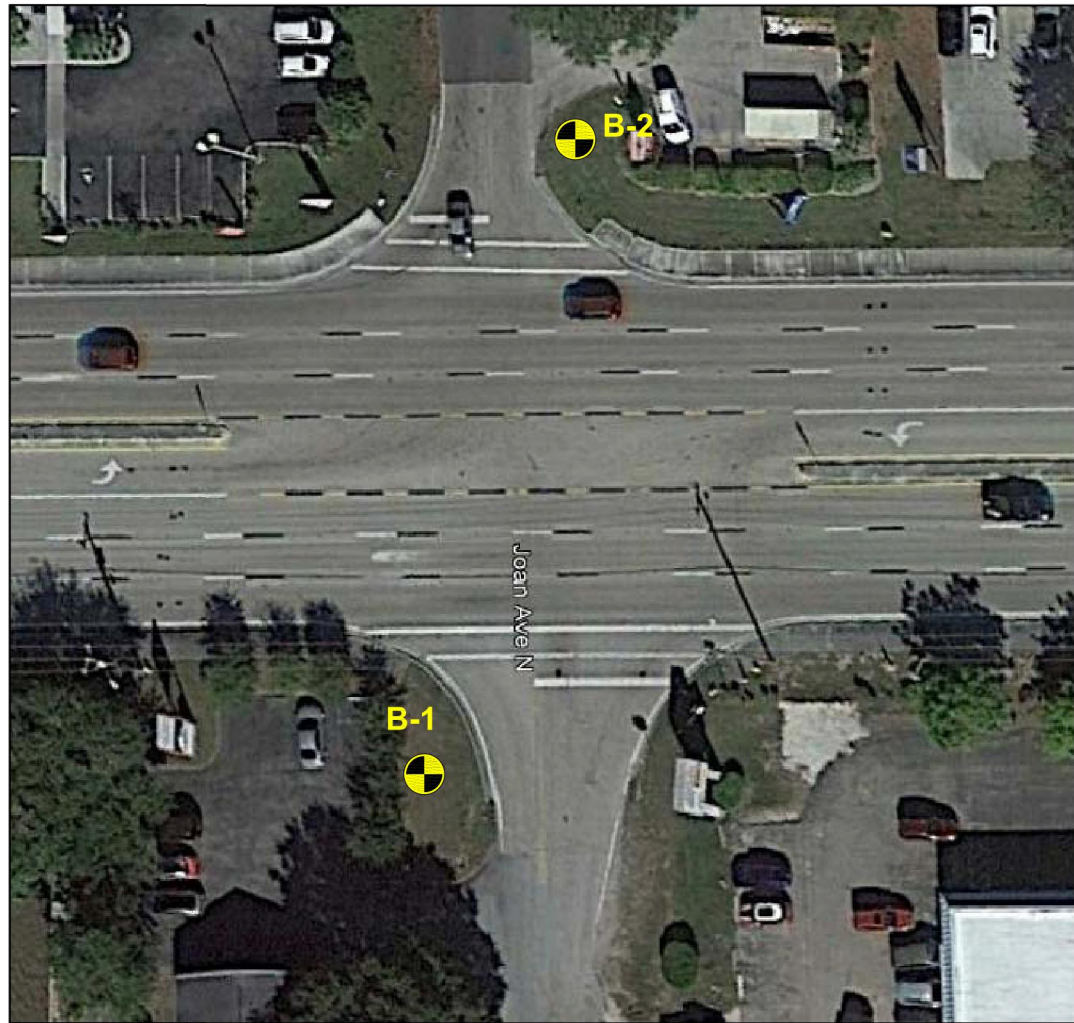
- FUSION SPLICE



LEE BOULEVARD

← SOUTH NORTH →

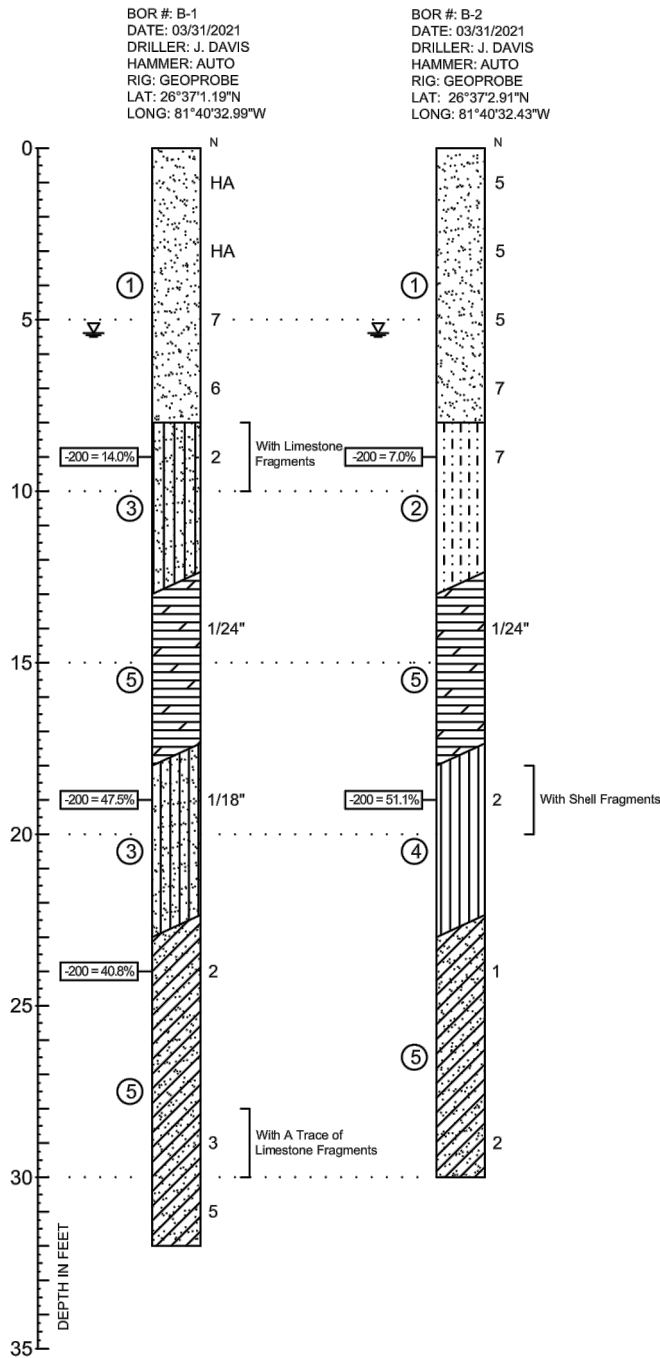
REVISIONS				DAVID J. ALLEN, P.E. P.E. LICENSE NUMBER 58540 STANTEC CONSULTING SERVICES, INC. 3905 CRESCENT PARK DRIVE RIVERVIEW, FLORIDA 33578	LEE COUNTY DEPARTMENT OF TRANSPORTATION			<i>FIBER OPTIC SPLICE DETAILS</i>	SHEET NO.
DATE	DESCRIPTION	DATE	DESCRIPTION		ROAD NAME	LEE COUNTY CIP NO.	FINANCIAL PROJECT ID		T-17
					LEE BLVD.	21-00011	N/A		



NOTES: SPT BORING LOCATION

Source: Google Earth Pro

SOIL PROFILES



SOIL LEGEND

- ① Brown to Dark Brown, Gray to Dark Gray, Tan, SAND (SP) Loose
- ② Gray, Tan, Yellow Slightly Silty SAND (SP-SM) Loose
- ③ Gray, Tan, Silty SAND (SM) Very Loose
- ④ Gray, Tan, SILT (ML) Soft
- ⑤ Green to Light Green, Clayey SAND (SC) Very Loose to Loose
- ⑥ Gray, Tan, WEATHERED LIMESTONE (WLS) Very Soft

SOIL PROFILE LEGEND

B-X = BORING NUMBER
 SOIL TYPE N = SPT TEST VALUE
 GROUND WATER LEVEL
 SOIL SYMBOL INDICATES PRACTICAL REFUSAL TO BORING EQUIPMENT
 H = INDICATES GRADUAL TRANSITION IN SOIL TYPES
 N - NUMBERS TO THE RIGHT OF BORINGS INDICATE SPT VALUE FOR 12-INCHES OF PENETRATION (UNLESS OTHERWISE NOTED).
 NO ELEVATIONS WERE PROVIDED. DEPTH SHOWN IS FROM EXISTING GROUND SURFACE AT TIME OF SAMPLING. GEOGRAPHICAL GPS COORDINATE LOCATIONS WERE DETERMINED USING A 4 SATELLITE MINIMUM AUTONOMOUS SOLUTION WAAS ENABLED HAND HELD GPS UNIT. THE BORING LOGS SHOWN REPRESENT SUBSURFACE CONDITIONS WITHIN THE BOREHOLE AT TIME OF DRILLING. NO WARRANTY AS TO THE SUBSURFACE CONDITION, STRATA DEPTH OF SOIL CONSISTENCY BETWEEN OR OUTSIDE BORING LOCATIONS IS EXPRESSED OR IMPLIED BY THIS DRAWING.
 -200 - PERCENT PASSING THE NO. 200 STANDARD SIEVE
 WLS - WEATHERED LIMESTONE

SOIL CLASSIFICATION

CORRELATION OF N - VALUES WITH RELATIVE DENSITY AND CONSISTENCY		CORRELATION OF N - VALUES WITH HARDNESS DESCRIPTION	
COHESIONLESS SOIL	SILTS AND CLAYS	LIMEROCK	
N - VALUE	RELATIVE DENSITY	N - VALUE	CONSISTENCY
0 - 3	VERY LOOSE	0 - 1	VERY SOFT
4 - 8	LOOSE	2 - 4	SOFT
9 - 24	MEDIUM DENSE	5 - 6	FIRM
25 - 40	DENSE	7 - 12	STIFF
OVER 40	VERY DENSE	13 - 24	VERY STIFF
		OVER 24	HARD

APPROXIMATE FINES CONTENT	MODIFIERS	APPROXIMATE SAND/ GRAVEL CONTENT	MODIFIERS	APPROXIMATE ROOT CONTENT	MODIFIERS
5% TO 15%	SLIGHTLY SILTY OR SLIGHTLY CLAYEY	5% TO 15%	SLIGHTLY SANDY OR SLIGHTLY GRAVELLY	5% TO 10%	TRACE
16% TO 25%	SILTY OR CLAYEY	16% TO 25%	SANDY OR GRAVELLY	11% TO 20%	TRACE TO SOME
26% TO 49%	VERY SILTY OR VERY CLAYEY	26% TO 49%	VERY SANDY OR VERY GRAVELLY	21% TO 40%	SOME
				41% TO 60%	AND

DEFINITION OF DESCRIPTIVE TERMS OF MODIFIERS FOR SILTS/CLAYS/SHELLS/GRAVELS ARE DESCRIBED AS FOLLOWS:

PERCENTAGE OF MODIFIER MATERIAL	FIRST QUALIFIER	SECOND QUALIFIER
0 - 5	WITH A TRACE OF + MODIFIER	WITH A TRACE
5 - 12	SLIGHTLY + MODIFIER + Y	WITH SOME
12 - 30	MODIFIER + Y	WITH
30 - 50	VERY + MODIFIER + Y	AND

SOIL PARAMETERS

Boring No.	Depth (ft)	Unit Weight (moist) (pcf)	Submerged Unit Weight (moist) (pcf)	Angle of Internal Friction (°)	Cohesion Cu (psf)
B-1	0 - 8	105	43	29	-
	8 - 28	100	38	26	-
	28 - 32	105	43	29	-
B-2	0 - 13	105	43	29	-
	13 - 30	100	38	26	-

SUBMERGED UNIT WEIGHT SHOULD BE USED BELOW THE WATER TABLE.

ENVIRONMENTAL CLASSIFICATION

ENVIRONMENTAL CLASSIFICATION IS ASSUMED AS EXTREMELY AGGRESSIVE



REVISIONS						GFA INTERNATIONAL, INC 201 WALDO AVENUE NORTH LEHIGH ACRES, FLORIDA 33971 Matthew R. Elmore, P.E.#86409	ROAD NAME			REPORT OF CORE BORINGS MAST ARM SIGNALIZATION LEE BOULEVARD & JOAN AVENUE LEHIGH ACRES, LEE COUNTY, FLORIDA	SHEET NO. T-18
DATE	BY	DESCRIPTION	DATE	BY	DESCRIPTION		ROAD NAME	COUNTY NAME	GFA PROJECT ID		
							LEE BLVD. / JOAN AVE.	LEE	3230.2100016.0000		