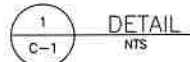
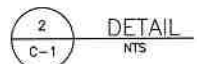
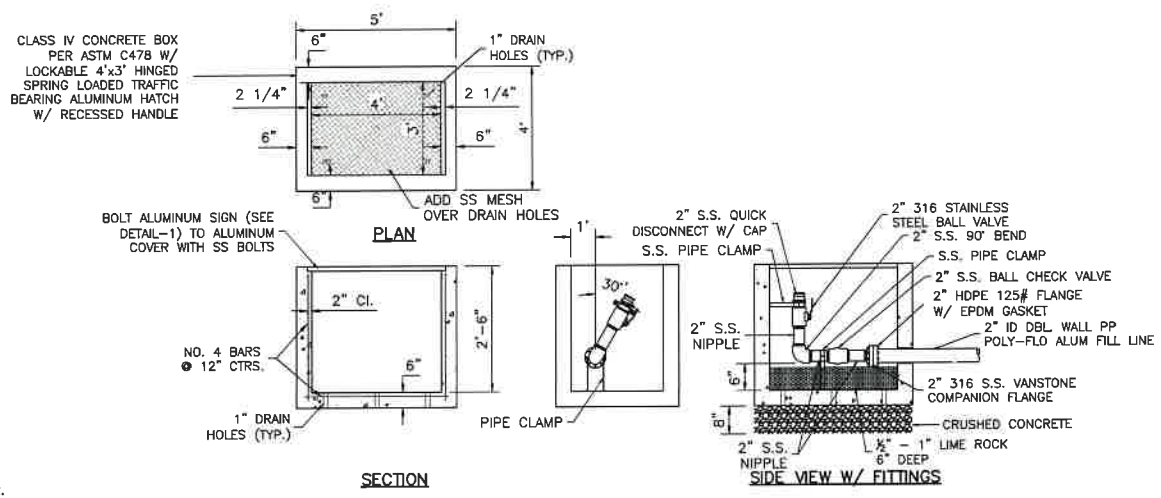


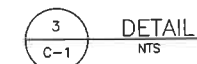
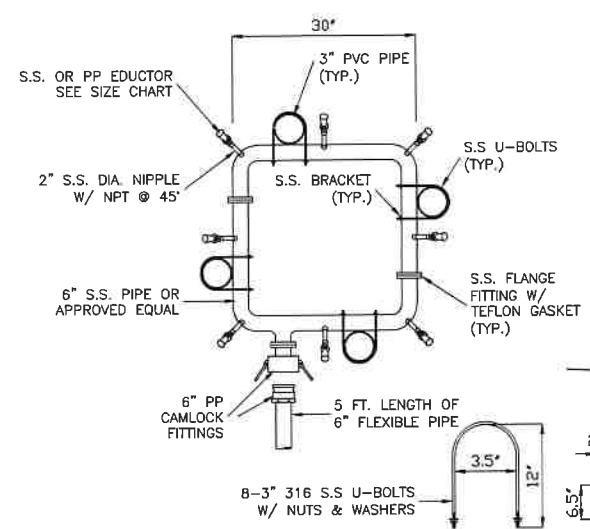
- NOTES:
1. ALL LETTERS ARE 1" SERIES "C".
  2. SIGN SHALL HAVE A WHITE BACKGROUND WITH BLUE OPAQUE LETTERS AND BORDER.
  3. SECURE SIGN TO ALUM PUMP BUILDING DOOR.



CONTROL BUILDING EQUIPMENT



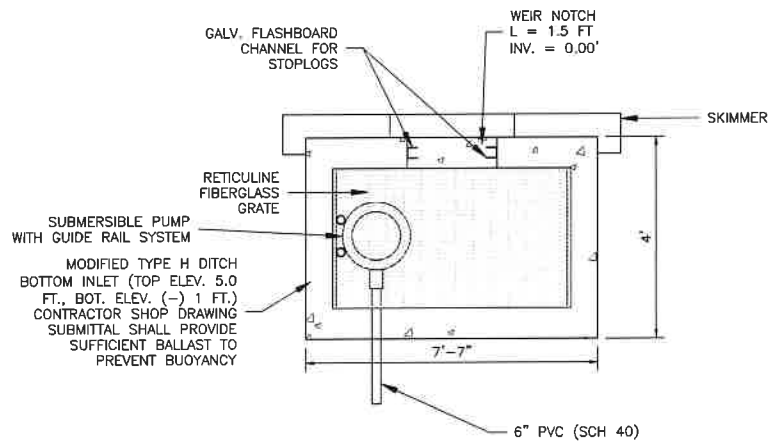
ALUM TANK FILL STRUCTURE



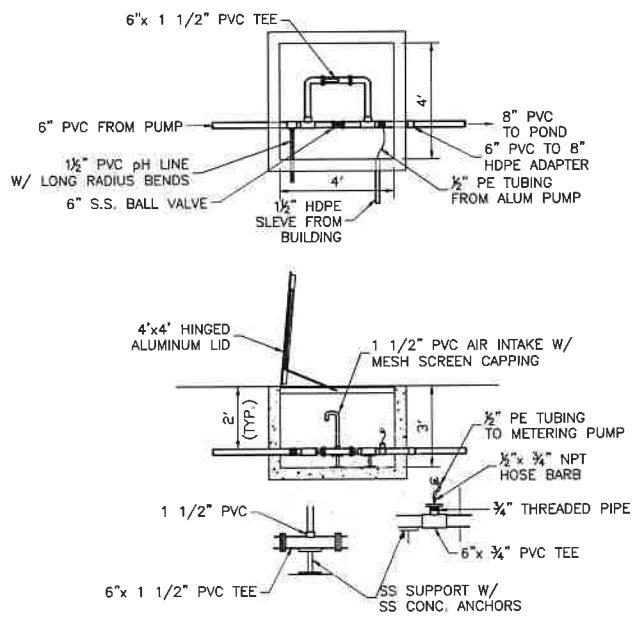
POND ALUM INJECTION APPARATUS

EDUCTOR SIZING CHART BY ZONE AND SITE

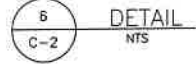
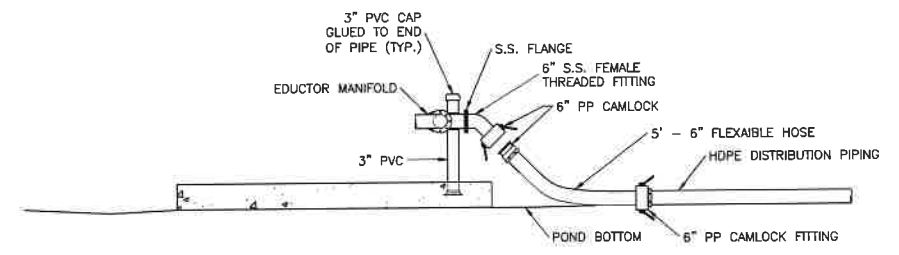
ZONE	FIRST	SECOND	THIRD
1	1.5"	2"	2"
2	1.5"	2"	2"
3	1.5"	2"	2"
4	1.5"	2"	2"
5	2"	2"	2"



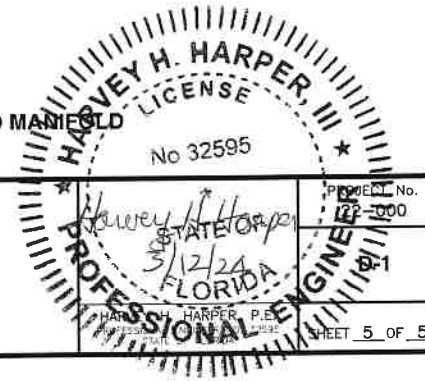
INTAKE STRUCTURE



ALUM / AIR INJECTION



FLEXIBLE PIPING CONNECTION TO MANIFOLD

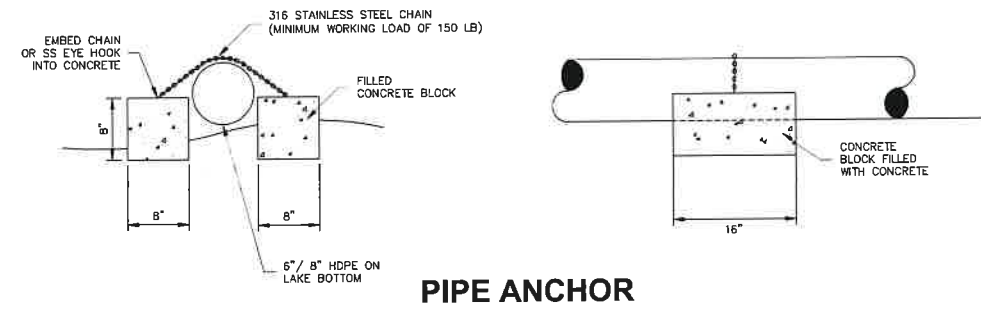


DESIGNED BY:	REV.	DATE	DESCRIPTION	APP'D. BY
H. H. HARPER	1	06/29/23	ADDITIONAL LABELING AND CLARIFICATION	HHH
DRAWN BY:				
L. E. HEIGHT				
CHECKED BY:				
H. H. HARPER				
APPROVED BY:				
H. H. HARPER				
DATE: Jun., 2023				
SCALE: AS SHOWN				

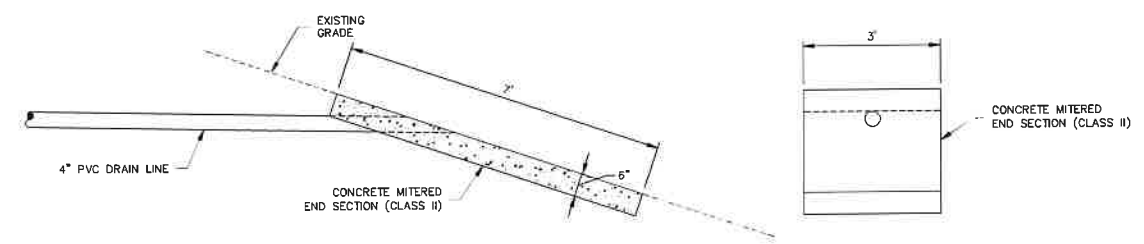
**ERD**  
**ENVIRONMENTAL RESEARCH & DESIGN, INC.**  
 ENGINEERING • SCIENCE • CHEMISTRY • RESEARCH  
 3419 TRENTWOOD BLVD., SUITE 102, ORLANDO, FL 32812  
 TELEPHONE 407-855-9465 • FAX 407-928-0419  
 ENGINEERING BUSINESS No. 6244

LEES PARK WATER QUALITY  
 ENHANCEMENT PROJECT  
 LEES COUNTY  
 FLORIDA

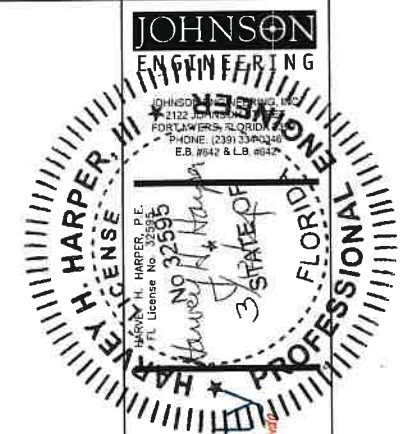
DETAILS



**PIPE ANCHOR**



**DRAIN LINE MITERED END SECTION**



LAKES PARK WATER  
QUALITY - PHASE 3  
LEE COUNTY FLORIDA

NO.	DESCRIPTION	DATE

DATE: MARCH 2024  
PROJECT NO. 20214150-000  
FILE NO. 26-45-24  
SCALE: AS SHOWN

SYSTEM DETAILS

SHEET NUMBER

**D02**