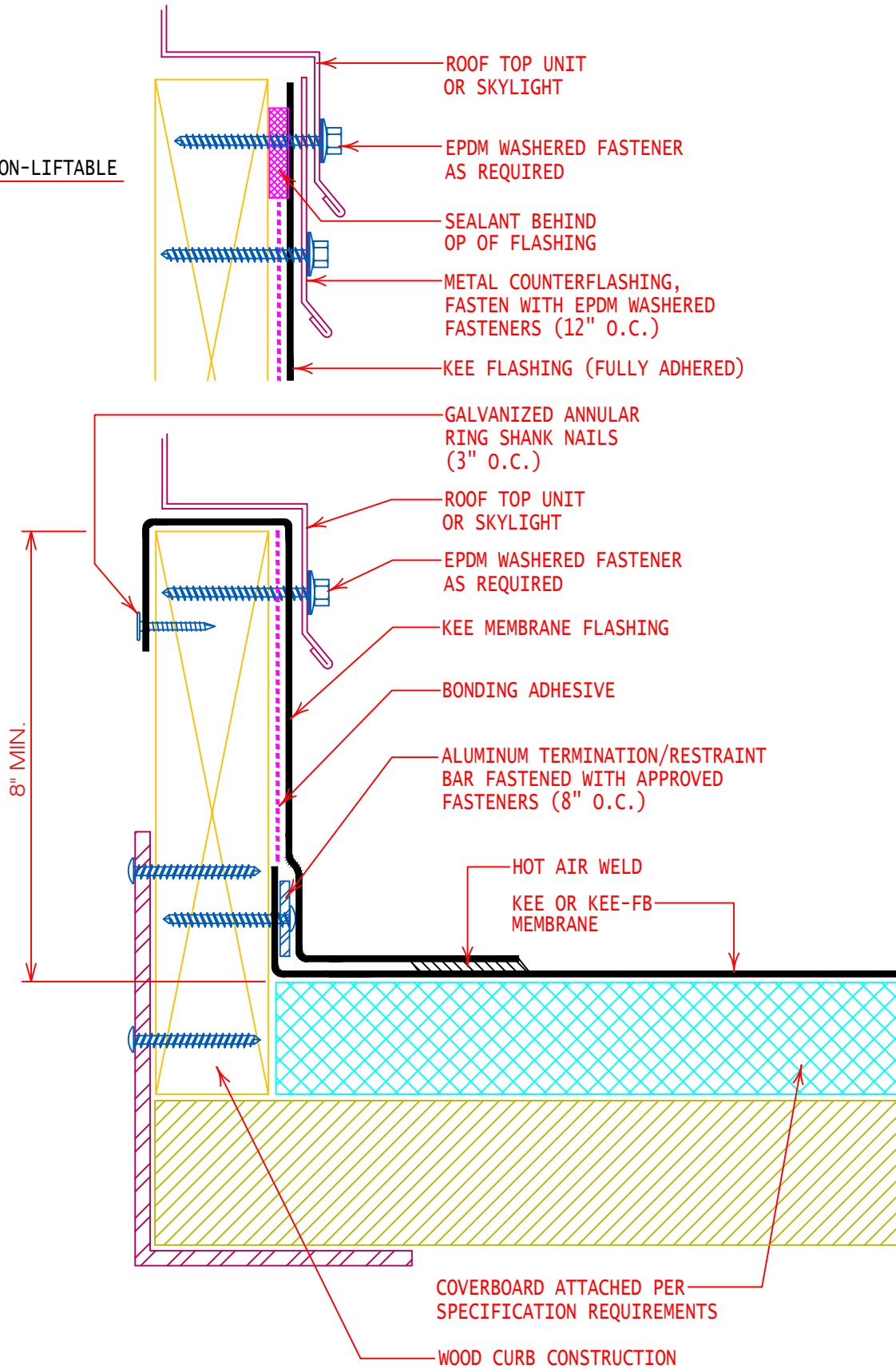
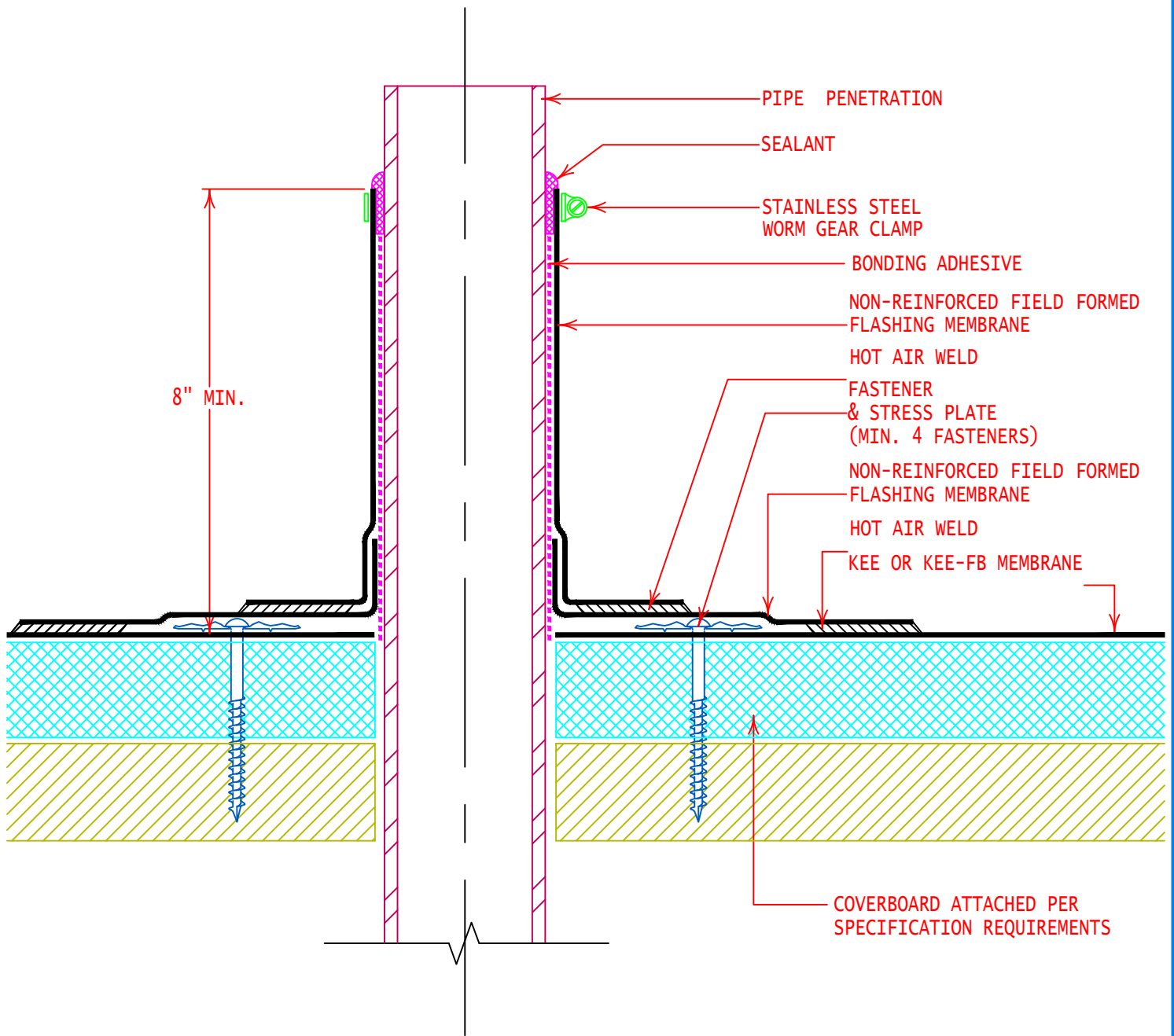


Attachment 1

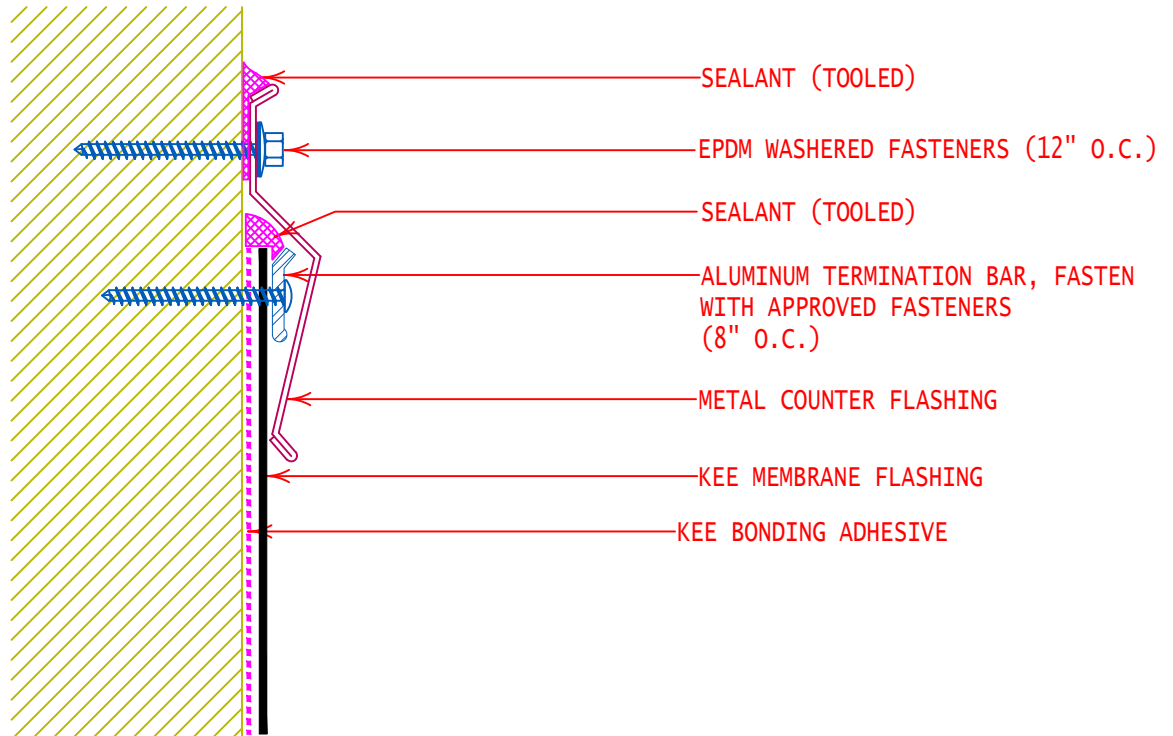
NON-LIFTABLE



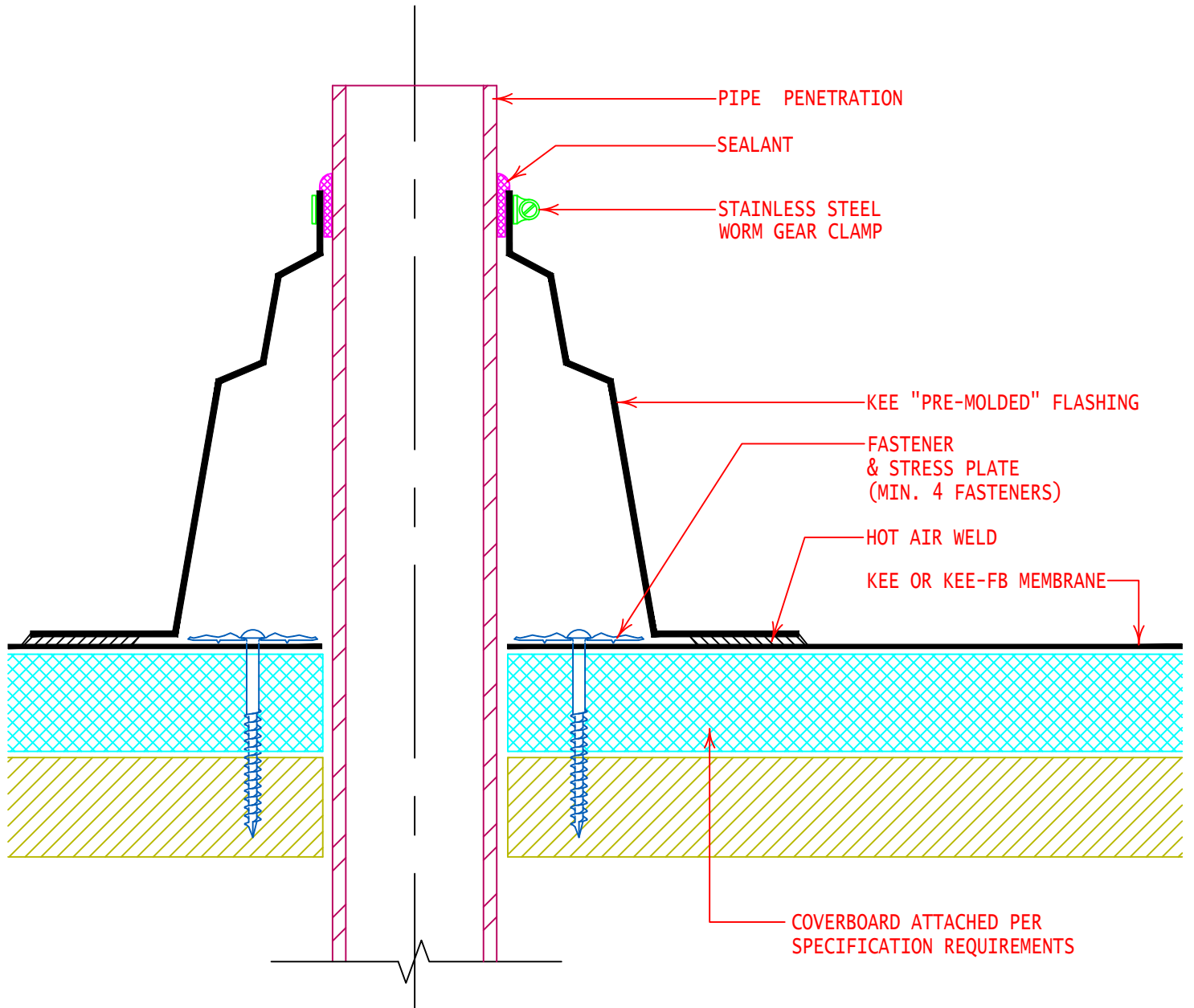
TYPICAL WOOD OR SKYLIGHT CURB FLASHING
(BLOCKING ALTERNATE) T-BAR RESTRAINT



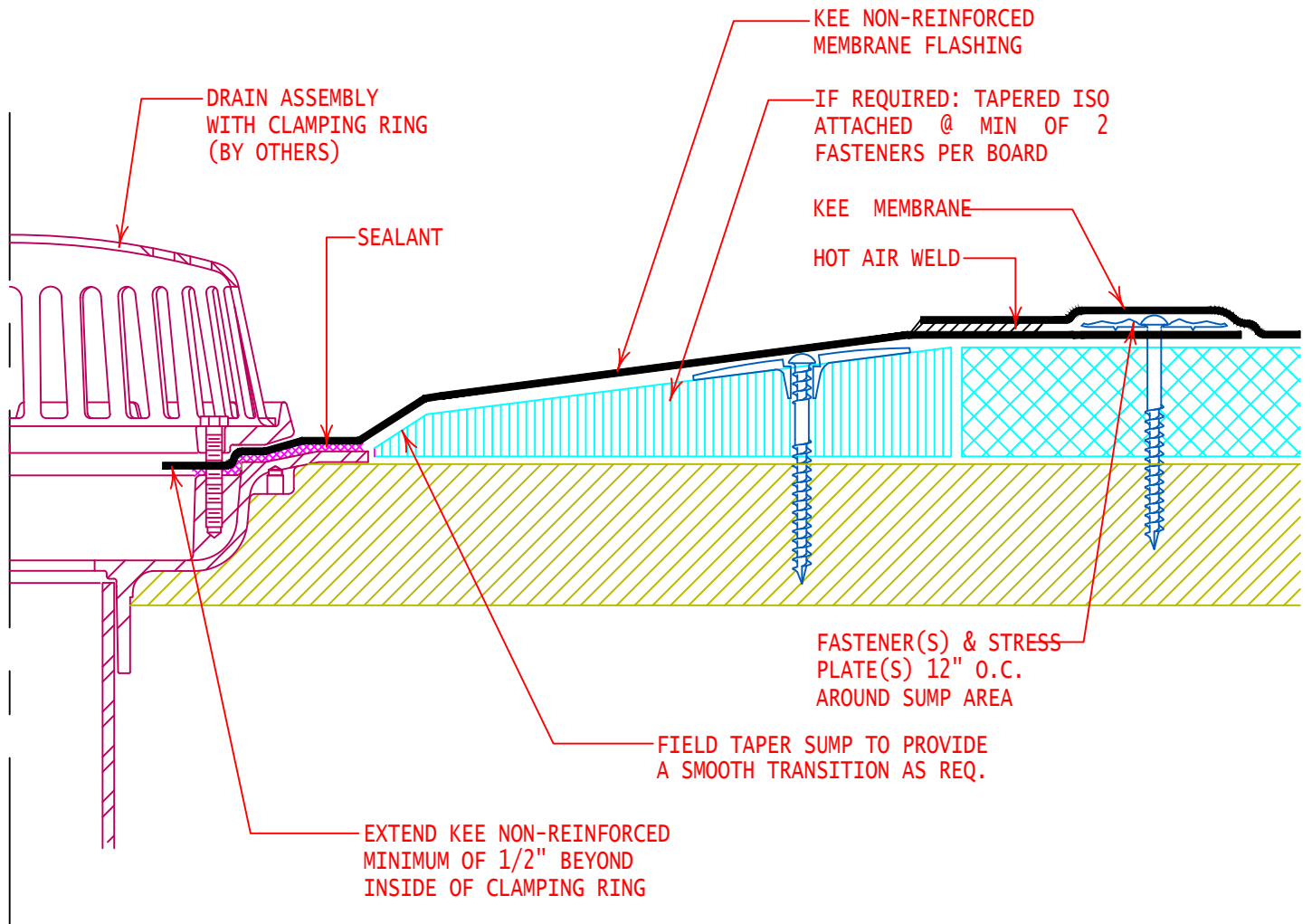
FIELD FABRICATED PIPE FLASHING



LOW WALL FLASHING

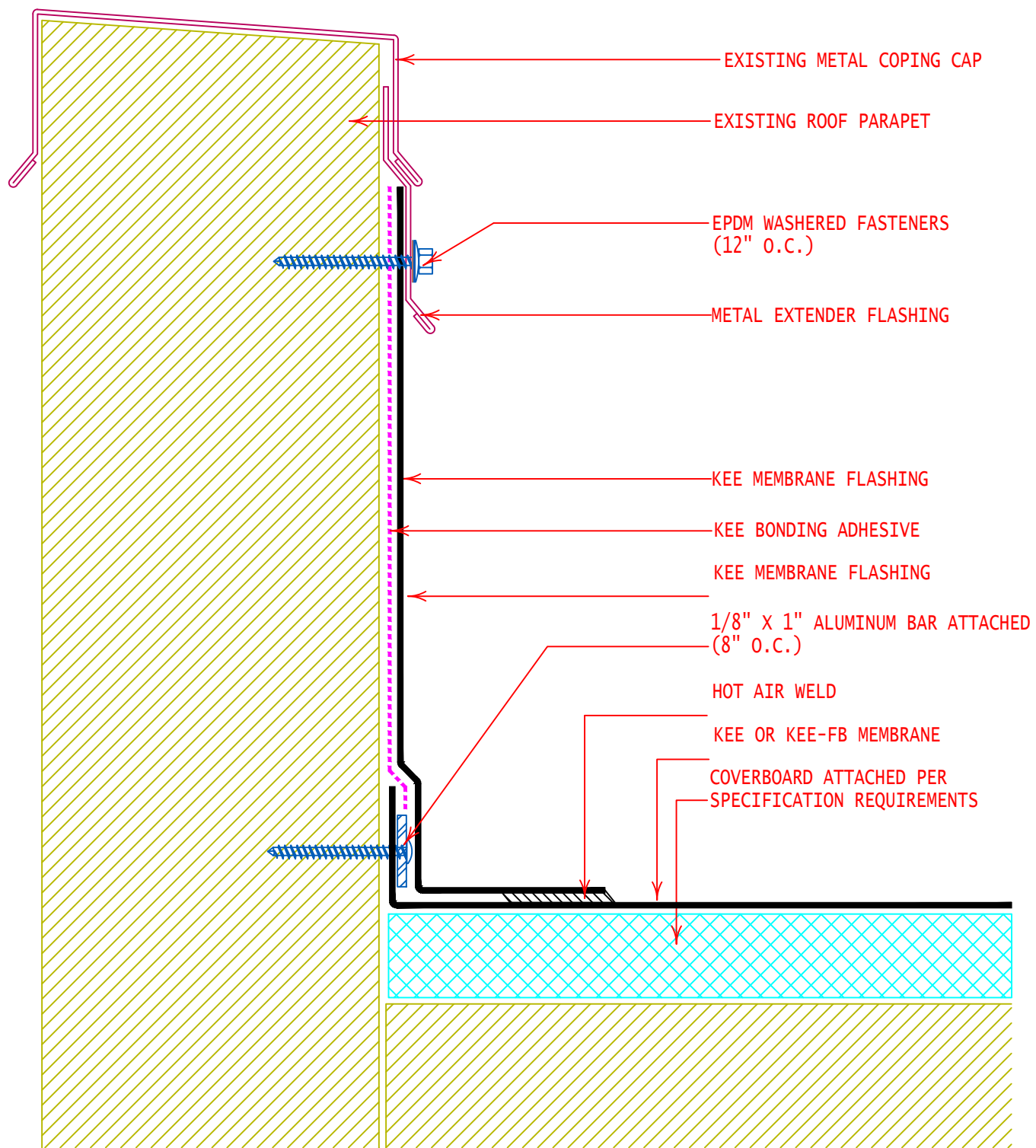


PRE-MOLDED PIPE FLASHING



TYPICAL DRAIN FLASHING

	TYPICAL DRAIN FLASHING		



NON-REMOVABLE COPING CAP

1. GENERAL SPECIFICATIONS

1.1. REQUIREMENTS

- 1.1.1. Furnish and install a new weather and watertight --- Adhered High Performance KEE Fleeceback Thermoplastic Roofing System that complies with ASTM D6754 Standard Specification for Ketone Ethylene Ester Based Sheet Roofing.
- 1.1.2. Roofing membrane must be compliant with ASTM D 6754 KEE Membrane.
- 1.1.3. Membrane Substitutions must be ASTM D 6754 compliant.

1.2. PROJECT SCOPE

- 1.2.1. Roofing Contractor shall furnish all labor, materials, tools, equipment and supervision necessary to complete the installation of a new High Performance Adhered KEE Roofing Membrane including roof related insulation and/or coverboards, flashings, accessories and related metalwork in strict accordance with the contract, drawings and High-Performance Membrane Roof System Manufacturer's (MRSM) most current specifications and details.
- 1.2.2. The roofing contractor shall be an "Authorized Roofing Contractor" of the MRSM in good standing and be fully knowledgeable of all the requirements within the contract documents as well as all job site conditions that could affect their work.
- 1.2.3. The roofing contractor shall confirm all given information and notify County's representative, prior to bid, of any conflicts that will affect the quality or cost of the proposal.

1.3. QUALITY ASSURANCE

- 1.3.1. Manufacturer's Qualifications: The High-Performance Membrane Manufacturer shall be an American owned company with no less than 25 years performance track record in the state of Florida.
- 1.3.2. Installer Qualifications: A licensed roofing contractor, authorized by the MRSM to install the type of roof system specified for this project.
- 1.3.3. Source Limitations: Obtain all components including roof insulation and/or coverboard, fasteners adhesives and other accessories as required, from the approved MRSM.
- 1.3.4. The roofing contractor shall maintain an adequate number of skilled workers who are thoroughly trained and experienced in the necessary crafts, and who are completely familiar with the specified requirements and methods necessary for the proper performance of the work. No allowance will be made for lack of skill on the part of the workers.

- 1.3.5. Any deviations from contract, drawings and/or specifications must be submitted in writing for approval prior to implementation to the design professional representing the County and the MRSM for acceptance / approval by both parties.
- 1.3.6. Upon completion of the roof installation the roofing contractor shall arrange for a quality assurance / warranty inspection by the Technical Service Department of the approved MRSM. Notice of the inspection date and time will be given to the County's representative at least 72 hours prior to the inspection taking place.

1.4. REFERENCES

- 1.4.1. ASTM D6754 Standard Specification for Ketone Ethylene Ester Based Sheet Roofing
- 1.4.2. ASTM D 751 Test Methods for Coated Fabrics
- 1.4.3. UL 790 Underwriters Laboratories (UL) - Fire Hazard Classifications
- 1.4.4. FM 4470 GM Global (FM) - Roof Assembly Classifications
- 1.4.5. National Roofing Contractors Association (NRCA) - Roofing and Waterproofing Manual

1.5. PERFORMANCE REQUIREMENTS

- 1.5.1. General Performance: completed high performance membrane roof system and base flashing shall withstand specified uplift pressures, thermally induced movement, and exposure to weather without failure due to defective manufacture, fabrication, installation or other defects in construction.
- 1.5.2. Material Compatibility: provide roofing materials that are compatible with one another under conditions of service and application required, as demonstrated by the MRSM based upon insitu field evidence of the roofing membrane/systems service life cycle greater than 20-years.
- 1.5.3. Roofing System Design: provide high performance membrane roofing system that is identical to systems that have been successfully tested by a qualified testing and inspecting agency to resist wind uplift pressure calculated according to ASCE-7.

1.6. SUBMITTAL REQUIREMENTS

- 1.6.1. General Performance: completed high performance membrane roof system and base flashing shall withstand specified uplift pressures, thermally induced movement, and exposure to weather without failure due to defective manufacture, fabrication, installation or other defects in construction.
- 1.6.2. Material Compatibility: provide roofing materials that are compatible with

one another under conditions of service and application required, as demonstrated by the MRSM based upon insitu field evidence of the roofing membrane/systems service life cycle greater than 20-years.

- 1.6.3. Roofing System Design: provide high performance membrane roofing system that is identical to systems that have been successfully tested by a qualified testing and inspecting agency to resist wind uplift pressure calculated according to ASCE-7.

1.7. PRODUCTS AND/OR WORK NOT INCLUDED IN THIS SPECIFICATION

- 1.7.1. Rough Carpentry; wood nailers and wood blocking
- 1.7.2. Masonry; waterproofing, through wall flashing, scupper openings
- 1.7.3. Plumbing; installation of any roof drains
- 1.7.4. Electrical; rooftop electrical penetrations
- 1.7.5. Mechanical; rooftop HVAC equipment installation

1.8. PRODUCT DELIVERY, STORAGE AND HANDLING

- 1.8.1. Deliver all materials to the job site in manufacturer's original, unopened containers, with legible labels and in sufficient quantity to allow for continuity of work.
- 1.8.2. Select and operate material handling equipment in a safe manner, guarding against damage to existing construction or newly applied roofing and conforming to manufacturer's recommendations of handling and storage.
- 1.8.3. All rolls of membrane shall be stored, lying down, elevated above the roof deck and completely protected from moisture with tarpaulins. (Manufacturer's packaging is not considered adequate for outdoor storage.)
- 1.8.4. Insulation and cover board materials shall be elevated on pallets and fully protected from moisture with tarpaulins. (Manufacturer's packaging is not considered adequate protection from moisture.)
- 1.8.5. Adhesives and sealants shall be safely stored between 50° F and 80°F prior to use.
- 1.8.6. Flammable materials shall be stored in a cool, dry area away from sparks and open flames. Follow all precautions as outlined in manufacturer's Material Safety Data Sheets.
- 1.8.7. Materials, having been determined by the County's representative to be damaged, shall be immediately removed from the construction site and replaced at no cost to the County.

1.9. COORDINATION

- 1.9.1. Prior to installation of materials, a pre-roofing conference shall be held with the roofing contractor, general contractor, County's representative(s) and representatives of all trades that may be working on the roof / completed membrane to discuss the specified roofing system, coordinate its proper application and the expectations of all parties involved. The authorized roofing

contractor and the County's representative shall notify all parties a minimum of fourteen days prior to the meeting.

- 1.9.2. Plan and coordinate the installation of the roofing system with other trades in such a manner to avoid membrane damage, keeping the complete installation weather tight and in accordance with all approved details and warranty requirements.
- 1.9.3. A Technical Representative of the MRSM shall be available to make recommendations necessary to ensure compliance with project specifications and specification alternatives due to unforeseen job conditions.
- 1.9.4. Topics of discussion at the pre-construction meeting may include the following:
 - 1.9.5. Utility Usage
 - 1.9.6. Sanitary Facilities
 - 1.9.7. Material Storage Areas
 - 1.9.8. Roof loading areas
 - 1.9.9. Site Access
 - 1.9.10. Roof Access
 - 1.9.11. Project security
 - 1.9.12. Rooftop Penetrations
 - 1.9.13. Completed Roof Protection
 - 1.9.14. Employee parking

1.10. JOB CONDITIONS

A. Safety

- 1.10.1. Take all necessary precautions regarding worker health and safety when using solvents, adhesives and hot asphalt.
- 1.10.2. Store flammable liquid and materials away from open sparks, flames and extreme heat.
- 1.10.3. Take necessary precautions when using solvents and adhesives near fresh air intakes.
- 1.10.4. Comply with all OSHA requirements for construction. It is the roofing contractor's responsibility to comply with all state, federal and local codes, guidelines and safety requirements.
- 1.10.5. Daily site cleanup shall be performed to minimize debris and hazardous congestion.
- 1.10.6. Roof work involves handling combustible and heavy materials at height, on some occasions directly over other trades working below the roof deck or in cases of occupied buildings, over building occupants. Extreme caution will be utilized when installing the roof to prevent injury to roofing personnel, other

trades, building occupants and to property. Listed below is a partial list of safety requirements, additional requirements exist in order to comply with OSHA and jobsite regulations.

- 1.10.7. Material Safety Data Sheets (MSDS) shall be maintained on the jobsite for any and all roofing materials being stored or installed on the project.
- 1.10.8. Fire suppression equipment will be readily available on the roof top whenever combustible roofing material is being handled. Protect against fire and flame spread at all times.
- 1.10.9. Roofing contractor will establish a safety plan and rooftop evacuation procedures and brief his personnel on appropriate emergency actions.

B. Protection

- 1.10.10. Schedule installation sequence to limit access and utilization of the newly installed membrane for material storage, construction staging, mechanical and/or excessive foot traffic.
- 1.10.11. Provide proper protection on all newly completed roofing to avoid damage to the new roofing system.
- 1.10.12. Traffic should be minimized on a freshly laid roof.
- 1.10.13. Protect building walls, rooftop units, windows and other components during installation.

C. Additional Precautions

- 1.10.14. Adverse weather conditions e.g. extreme temperature, high winds, high humidity and moisture, could have a detrimental effect on adhesives, general production efforts and/or the quality of the finished installation. Contact Manufacturers Technical Rep for recommendations and acceptable tolerances.
- 1.10.15. Daily production schedules of new roofing shall be limited to only that which can be made 100% watertight at the end of the day, including all flashing and night seals.
- 1.10.16. All surfaces to receive new roof system, including insulation and flashing, shall be free from all dirt, debris and be thoroughly dry.
- 1.10.17. Comply with local EPA requirements as published by Local, State and Federal authorities.
- 1.10.18. All construction debris shall be removed from the construction site and legally dispose of off site.

- 1.10.19. If a condition is discovered that is not covered by the project drawings and specifications notify the general contractor and County's representative immediately and resolve the conflict. Take appropriate steps to prevent water intrusion into the roof system until such conflict is resolved and roofing operations are continued.

1.11. WARRANTY

- 1.11.1. Provide manufacturer's 20 Year No Dollar Limit Warranty. All materials to be supplied by membrane manufacturer to be covered under warranty.
- 1.11.2. Provide contractor's warranty covering leaks caused by installation workmanship for a period of FIVE years.

2. PRODUCTS

2.1. GENERAL

- 2.1.1. All roofing system components shall be manufactured or supplied by approved MRSM.
- 2.1.2. Unless approved otherwise prior to project bid, all roofing components are to be manufactured or supplied through approved MRSM and be included in the warranty coverage.

2.2. MEMBRANE

- 2.2.1. A nominal 50-mil ketone ethylene ester (KEE) FEECEBACK membrane, reinforced with a 6.5-oz yd² knitted polyester fabric with a 4-oz yd² non-woven polyester fabric heat bonded to the backside. KEE membrane must meet or exceed all requirements outlined ASTM D 6754 - 02 Standard Specification for Ketone Ethylene Ester (KEE) Sheet Roofing. Membrane color shall be DC196 Off-White

2.3. FLASHING MEMBRANE

- 2.3.1. The KEE 50 mil smooth membrane shall be used for all flashing requirements to match the field membrane milage and warranty expectations selected for the roofing system.

2.4. PERIMETER MEMBRANE

- 2.4.1. The KEE 60 mil Xtreme feeceback membrane with 12 oz. fabric reinforcement shall be installed to provide additional protection for future exterior window system maintenance. Two rows totaling approximately 11-ft around the entire perimeter.

2.5. COVERBOARD

- 2.5.1. Coverboard (insulation overlayment) shall be a water-resistant gypsum core substrate conforming to the following:
- 2.5.2. FM approved meeting Class A 1-90, for fire and wind.
- 2.5.3. UL Classification: Class A Assembly.
- 2.5.4. Meet requirements of ASTM C 473
- 2.5.5. Approved Cover Board supplied by MRSM.
- 2.5.6. 1/2 in. Securock Gypsum Fiber

2.6. ROOF ACCESSORIES

- 2.6.1. Furnish accessories manufactured, marketed or approved by MRSM required to complete the roof installation to manufacturer's specification including (as applicable) but not limited to the items listed below.
- 2.6.2. ADHESIVES; application technique and coverage rates will vary according to substrate and environmental conditions.
 - i. KEE Bonding Adhesive; A VOC compliant solvent borne, contact (two sided) bonding adhesive, designed for bonding non-fleece back KEE membrane / flashing to properly prepared and pre-authorized vertical substrates and smoothback membrane applications.
 - ii. Foam Adhesive - Dual component, single bead (ribbon applied) urethane insulation adhesive. Adhesive is a non-solvent, elastomeric, urethane adhesive, specifically designed for bonding single or multiple layers of roof insulation and insulation composites and/or cover boards to structural roof decks and base sheets.
 - iii. Fleeceback Adhesive; a polymeric water borne, VOC compliant bonding adhesive, one side application (substrate only), designed for bonding KEE-FB (fleece back) membranes to properly prepared and pre-authorized horizontal substrates.
- 2.6.3. Flashing Sealant; a one-component gun-grade polyurethane sealant to seal flashing termination.
- 2.6.4. Pourable Sealant; a one-component *pourable*, self leveling, polyurethane sealant to fill "pitch pans". Pitch pans are to be avoided whenever possible.
- 2.6.5. Liquid Flashing; polymethyl methacrylate (PMMA) liquid resin for use in aberrant penetrations and low flashing terminations. Liquid flashing areas must be pre-qualified by membrane manufacturer.
- 2.6.6. Clad Metal; to fabricate metal flashing, 4' x 10' sheets of 0.040 thick

3003H14 aluminum, laminated with a 0.020 mil polymeric coating.

- 2.6.7. Pre-Molded Flashing(s); injection molded vent stack and inside/outside corner flashing using KEE 741 compound.
- 2.6.8. Non-Reinforced Membrane; field fabrication membrane, 0.060 mil non-reinforced KEE membrane.
- 2.6.9. Fasteners (for miscellaneous securement and base tie-ins)
 - i Membrane fasteners; to secure KEE membrane to steel, wood and structural concrete decks. A #15-13, buttress threaded, #3 Phillips head fastener constructed of case hardened carbon steel with a reduced diameter drill point and corrosion resistant coating.
 - ii Insulation fasteners; to secure insulation to steel, wood and structural concrete decks. A #14-13, heavy duty threaded steel #3 Phillips truss, self tapping corrosion resistant fastener.
- 2.6.10. Barbed Stress Plates; used to anchor membrane, is 19-ga., AZ50 galvalume steel; 1.5 by 2.75 in. (38 by 70 mm) oval stress distribution plate with barbs and has a 0.25 in. (6 mm) diameter center hole.
- 2.6.11. Insulation Stress Plates; used to secure insulation and/or cover-board to steel, wood and structural concrete decking. Manufactured from high density polyethylene, 3 inch in diameter, designed with a self locking mechanism to secure the head of the fasteners into the plate.
- 2.6.12. Termination Bar; membrane flashing(s) restraint/termination seals, nominal 1/8 inch x 1 inch x 10' 6060-T5 extruded aluminum bar with pre-punched slots, 8 inch on center.
- 2.6.13. Metal Fascia System; two piece "snap-on" pre-formed, architectural metal edge system. Must be supplied by membrane manufacturer and included in warranty.

3. EXECUTION

3.1. GENERAL

- 3.1.1. The latest manufacturer specifications and installation techniques are to be followed along with the following additional requirements. These specific minimum requirements must be accounted for in the contractors bid / proposal and shall not be altered.
- 3.1.2. The roofing contractor is responsible for providing a suitable substrate surface for the proper installation of the Membrane Roofing System, roof insulation and specified components.
- 3.1.3. The roofing contractor shall examine all areas and conditions where by work

in this section is to be installed.

- 3.1.4. Notify the County's Representative of any and all conditions detrimental to the proper and timely execution of the work. Do not proceed until such conditions have been corrected to the satisfaction of the County's representative.
- 3.1.5. Commencement of roofing operations indicates the roofing contractor's acceptance of the roofing substrate for roof application.

3.2. SUBSTRATE PREPARATION

- 3.2.1. Surfaces scheduled to receive new membrane roofing shall be free of any standing water, dew, ice, loose debris or any other contaminate that could impair the quality of the installation.
- 3.2.2. Substrate shall be smooth, clean and free of sharp edges and or projections and obvious depressions that would interfere with the installation of a high quality high performance
- 3.2.3. Examine all the areas and conditions where by work in this section is to be installed. Correct any and all conditions detrimental to the proper and timely execution of the work. Do not proceed until such conditions have been corrected to the satisfaction of the County's representative.
- 3.2.4. Prepared substrate shall be smooth, dry, and free of debris and/or any other irregularities which would interfere with the proper installation of the roofing system.
- 3.2.5. Do not proceed with any part of the application until all defects and preparation work have been corrected and complete.
- 3.2.6. Adhesives will not bond to wet, damp or inadequately cured lightweight insulating concrete or poured structural concrete.
- 3.2.7. Reroofing applications that require modification to the deck and/or insulation system should be installed to provide positive slope and subsequent positive drainage of the new KEE Roofing System.
- 3.2.8. All terminations of the KEE Roofing System must be constructed to prevent water from penetrating behind or beneath the new KEE Roofing System. This includes water from above, beside, below and beneath the new system.

3.3. REMOVE OF EXISTING COATED AND UNCOATED MOD-BIT.

- 3.3.1. Remove all existing mod-bit roofing down to the existing lightweight concrete
- 3.3.2. Remove only enough roofing to accommodate the day's work and ensure the exposed area can be made 100% watertight at the end of the day or prior to inclement weather.

3.4. RECOVER EXISTING LIGHTWEIGHT CONCRETE.

- 3.4.1. Remove all loose debris and/or vacuum and legally dispose of off site.
- 3.4.2. Remove and replace all wet or deteriorated lightweight concrete with like kind.
- 3.4.3. Clean all exposed metal surfaces such as pipes, pipe sleeves, drains, duct work, etc., by removing loose paint, rust and any asphalt or coal tar pitch of any kind. Remove and properly discard lead sleeves at soil stacks.

3.4.4. Existing Lightweight Concrete

- a. Deteriorated decking shall be repaired and/or replaced with appropriate materials according to standard industry regulations and practices.
- b. Repair any depressions and/or areas where reinforcing has become exposed.
- c. Before installing new coverboard using the approved adhesive:
 - i. Cracks and or camber differentials greater than 0.1875 of an inch shall be repaired using an appropriate cementitious grout or fill, and feathered to promote a smooth transition.
 - ii. All surface irregularities shall be leveled to ensure complete contact with the decking for insulation bonded in hot asphalt or approved adhesives.

3.5. WOOD NAILERS.

- 3.5.1. Install treated lumber at the same heights as insulation layer or adjacent construction \pm 0.25 inch. Continuous treated wood nailers are to be installed at all perimeters, around roof projections and penetrations as shown in approved details.
- 3.5.2. Where wood nailers are installed directly on the substrate, the substrate shall be carefully examined to confirm that the entire area provides a suitable fastening surface. All defects shall be repaired by the appropriate trade prior to installation.
- 3.5.3. Nailers shall be at least 3.5 inches wide and 1.5 inches high and installed and anchored in such a manner to resist a force of 250 lbs. per linear foot of wood blocking in any direction.
- 3.5.4. Nailers along parapets, curbs and expansion joints are recommended for insulated decking. Consult KEE Construction Details or Technical Customer Services for optional/alternate membrane termination/securement methods.

3.6. INSTALLATION - GENERAL

- 3.6.1. Perform all related work specified in other sections of the contract documents necessary for the proper installation of the high performance high performance.
- 3.6.2. Ensure mechanical fasteners do not penetrate items located within or secured to the bottom of the deck: i.e. electrical conduit, post tension cables or other miscellaneous items.
- 3.6.3. Outside ambient air temperatures must be 40°F and rising during the use of any and all adhesives.

3.7. ROOF COVERBOARD - GENERAL

- 3.7.1. Roof insulation and/or coverboard shall be installed where by the long dimension of the board(s) run in parallel alignment and the short dimensions are staggered.
- 3.7.2. Insulation and/or coverboard shall be installed with minimum joint dimensions and shall be tightly butted where possible. Maximum joint widths shall be 3/8". Damaged corners shall be cut out and replaced with an insulation piece a minimum of 12" x 12" pieces that are cut from larger panels and are smaller than one square foot are not acceptable.
- 3.7.3. Install no more than can be covered during the same working day.
- 3.7.4. Install coverboard up to the existing drain ring to allow for positive drainage.
- 3.7.5. When a cover board and/or multiple layers are installed each layer shall be offset from the previous layer a minimum of 12" on center.
- 3.7.6. At the end of each working day, provide a watertight cover on all unused insulation as to avoid moisture penetration.

3.8. COVERBOARD ATTACHMENT – ADHERED SYSTEMS

- 3.8.1. Coverboard shall be applied to and installed over properly prepared and pre-approved substrates, free of any debris, dirt, grease, oil or moisture.
- 3.8.2. Foam Adhesive
 - 3.8.2.1. The foam adhesive ribbons should be spaced at 12" o.c. in the field.
 - 3.8.2.2. The foam adhesive ribbons should be spaced at 6" o.c. in the perimeter.
 - 3.8.2.3. The foam adhesive ribbons should be spaced at 3" o.c. in the corner.
 - 3.8.2.4. Approved adhesive shall be applied only to properly prepared and pre-approved substrates, free of any debris, dirt, grease, oil or moisture.
 - 3.8.2.5. The minimum product temperature at time of application shall be 70°F.
 - 3.8.2.6. Approved adhesive shall not be applied when surface or ambient temperatures are below 40° or above 110° F.

- 3.8.2.7. Coverboard shall be fully bonded to the substrate with a maximum board size of 4 feet x 4 feet.
- 3.8.2.8. Coverboard shall be set into a continuous 1/2-inch bead of adhesive at a minimum rate of one linear foot of adhesive for every one square foot of coverboard.
- 3.8.2.9. Approved adhesive rates are to be increased in roof perimeter and corner zones according to specific project requirements and manufacturer's design recommendations.
- 3.8.2.10. Place the coverboards onto the adhesive beads and walk on the boards, spreading the adhesive for maximum contact.
- 3.8.2.11. A second walking will be required after ten (10) minutes to ensure maximum contact and bond strength.

3.9. MEMBRANE INSTALLATION – GENERAL

A. Quality Control

- 3.9.1. It will be the responsibility of the roofing contractor to initiate and maintain a QC program to govern all aspects of the installation of the Membrane Roofing System.
- 3.9.2. The project foreman and or supervisor will be responsible for the daily execution of the QC program which will include but is not limited to the supervision, inspection and probing of all heat welding incorporated within the Membrane Roofing System.
- 3.9.3. If inconsistencies in the quality of the application of the composite, membrane and/or welds are found, all work shall cease until corrective actions are taken to ensure the continuity the installation.

B. General

- 3.9.4. Work shall be coordinated to ensure that sequencing of the installation promotes a 100% watertight installation at the end of each day.
- 3.9.5. Restrictions regarding outside ambient air temperature are relative only to the exposure limits of the workers and/or adhesives when necessary.
- 3.9.6. When using adhesives outside ambient air temperature shall be above 40°F.

Curing or drying time of the adhesive will be affected by ambient temperatures and must be taken into consideration when determining flashing lengths.

- 3.9.7. Humidity can affect the drying time of solvent borne adhesives and/or cause condensation to form on the newly applied adhesive.
- 3.9.8. No moisture may be present on the adhesive(s) prior to mating or application of KEE membranes.

3.10. MEMBRANE SECUREMENT – ADHERED

- 3.10.1. The authorized roofing contractor shall assume full responsibility for any and all irregularities, defects or quality issues that arise due to failure to following published installation guidelines for the proper installation of adhered KEE membrane roofing systems.
 - A. Membrane (with fleece backing) Adhered with KEE
- 3.10.2. For all KEE-FB membranes, un-roll and position two rolls of KEE-FB over the properly installed/prepared substrate.
- 3.10.3. Ensure rolls are straight and the minimum 3 inch overlap between rolls is maintained.
- 3.10.4. Peel (butterfly) the rolls back in the long direction, half way upon themselves to expose the substrate and the underlying polyester fleece backing.
- 3.10.5. Apply continuous spatter pattern of KEE Foam spatter adhesive to the substrate between the rolls; dispensing the adhesive in a spattered pop-corn spray pattern.
- 3.10.6. Spatter pattern shall achieve a nominal 80% coverage of textured coating at approximately 0.25-inch nominal thickness. The balance of the substrate will get coated as the adhesive spreads during the brooming and rolling process.
- 3.10.7. Avoid spattering the back of the FB membrane.
- 3.10.8. Do not allow adhesive to contaminate membrane overlaps. Use a sheet of insulation board to mask the spray area along adjoining membrane areas.
- 3.10.9. Overspray may be cleaned immediately with acetone while the adhesive is still wet.
- 3.10.10. Fold/maneuver the FB membrane into the wet adhesive, (approximate open time for the adhesive is 5 to 10 minutes depending on environmental conditions) avoiding wrinkles or air pockets in the FB membrane.

- 3.10.11. Broom the membrane into the wet adhesive and complete the bonding process by firmly pressing the bonded membrane into place with a weighted, foam covered lawn roller.
- 3.10.12. Repeat the process for the remaining unbonded portion of the membrane, lapping subsequent, adjacent rolls of membrane a minimum 3 inches, ensuring proper shingling of the membrane the water along the laps.
- 3.10.13. No adhesive shall be applied to the lap seam areas of the membrane. Areas contaminated with adhesive are difficult to clean, may impair proper welding of the seams and may require a membrane patch or stip.
- 3.10.14. KEE FB adhesive is designed for use only when the substrate and ambient temperatures are a minimum 40°F and rising and the chemical cylinders are at least 70°F.
- 3.10.15. Do not use bad or marginal adhesives. Contact Manufacturer technical services if the quality of the adhesive is suspect.

3.11. HOT AIR WELDING

A. General

- 3.11.1. All field seams exceeding 10' in length shall be welded with an approved automatic welder.
- 3.11.2. All field seams must be clean and dry prior to initiating any field welding.
- 3.11.3. Remove foreign materials from the seams (dirt, oils, etc.) with MEK or authorized alternative.
- 3.11.4. Do not allow cleaning solvents to come in contact with the Kynar top finish when using Kynar membrane. Aggressive solvents will either mar or completely remove the top finish.
- 3.11.5. Use clean white cotton cloths and allow approximately five minutes for solvents to dissipate before initiating the automatic welder. Do not use denim or synthetic rags for cleaning.
- 3.11.6. Contaminated areas within a membrane seam will inhibit proper welding and will require a membrane patch.
- 3.11.7. All welding shall be performed only by qualified personnel to ensure the quality and continuity of the weld.
- 3.11.8. Keep the bottom of the Induction Weld tool and cooling magnets clean. Continuous operation of the induction welding process can promote overheating of the cooling magnets. Periodically cool the magnets using

clean water to prevent melting and/or scarring of the KEE membrane.

3.11.9. Follow the Induction Welder Tool manufacturer's recommendations for periodic cleaning and maintenance for the equipment.

B. Hand Welding

3.11.10. The lap or seam area of the membrane may be intermittently tack welded to hold the membrane in place.

3.11.11. The back interior edge of the membrane shall be welded first, with a thin, continuous weld to concentrate heat along the exterior edge of the lap during the final welding pass.

3.11.12. The nozzle of the hand held hot air welder shall be inserted into the lap at a 45° angle to the lap. Once the polymer on the material begins to flow, a hand roller shall be use to apply pressure at a right angle to the tip of the hand welder. Properly welded seams shall utilize a 1½" wide nozzle, to create a homogeneous weld, a minimum of 1½" in width.

3.11.13. Smaller nozzles may be used for corners, and other field detailing, maintaining a minimum 1" weld.

C. Automatic Machine Welding

3.11.14. Proper welding of the KEE Membrane can be achieved with a variety of automatic welding equipment. Contact Technical Services for specific recommendations.

3.11.15. Follow all manufacturer instructions for the safe operation of the automatic welder.

3.11.16. Follow local code requirements for electric supply, grounding and surge protection.

3.11.17. The use of a dedicated, portable generator is highly recommended to ensure a consistent electrical supply, without fluctuations that can interfere with weld consistency.

3.11.18. Properly welded seams shall utilize a 1½" wide nozzle, to create a homogeneous weld, a minimum of 1½" width.

3.12 INSPECTION

3.12.1. The job foreman and/or supervisor shall initiate daily inspections of all

completed work which shall include, but is not limited to the probing of all field welding with a dull pointed instrument to assure the quality of the application and ensure that any equipment or operator deficiencies are immediately resolved.

- 3.12.2. Ensure that all aspects of the installation (sheet layout, attachment, welding, flashing details, etc.) are in strict accordance with the most current MRSM Specifications and Details.
- 3.12.3. Excessive patching of field seams because of inexperienced or poor workmanship will not be accepted at time of FINAL INSPECTION FOR WARRANTY ACCEPTANCE.
- 3.12.4. Any deviation from pre-approved specifications and/or details requires written authorization from MRSM Technical Services prior to application to avoid any warranty disqualification.
- 3.12.5. It is the contractor, job foreman, and supervisor and/or quality control personnel to perform a final self-inspection on all seams prior to requesting the inspection for warranty issuance by MRSM Technical Services.

3.13. FLASHING

- 3.13.1. Clean all vents, pipes, conduits, tubes, walls and stacks to bare metal. All protrusions must be properly secured to the roof deck with approved fasteners. Remove and discard all lead, pipes and drain flashing. Flash all penetrations according to approved details.
- 3.13.2. Remove all loose and/or deteriorated cant strips and flashing.
- 3.13.3. Flash all curbs, parapets and interior walls in strict accordance with approved MRSM details.
- 3.13.4. All flashing shall be adhered to properly prepared, approved substrate(s) with bonding adhesive applied in sufficient quantity to ensure total adhesion.
- 3.13.5. The base flashing of all membrane flashing shall extend out on to the plane of the deck, beyond the wood nailers to a maximum width of 8".
- 3.13.6. Vertical flashing shall be terminated no less than 8" above the plane of the deck with approved termination bar and counter-flashing or metal cap flashing.
- 3.13.7. When using trowel grade polymeric sealant (mastic) as the adhesive, vertical wall flashing termination shall not exceed 40" without supplemental mechanical attachment of the flashing between the deck and the termination point of the flashing.

- 3.13.8. Complete all inside and outside corner flashing details with KEE preformed corners or an approved field fabrication detail.
- 3.13.9. Probe all seams with a dull, pointed probe to ensure the weld has created a homogeneous bond.
- 3.13.10. Install penetration accessories in strict accordance with approved details. Ensure penetration accessories have not impeded in any way the working specification. (Refer to the related trade for the technical specification).

3.14. METAL FLASHING

- 3.14.1. All perimeter edge details are to be fabricated from Polymeric-Clad Metal or utilize a prefabricated Fascia System.
- 3.14.2. Fasten all metal flashing to wood nailers or approved substrate with approved fasteners 8 inches on center.
- 3.14.3. Install metal flashing in accordance with MRSM Published Specifications and Construction Details.

3.15. ROOF DRAINS

- 3.15.1. Flash all roof drains in accordance with manufacturer roof drain details.
- 3.15.2. Minimum 60-mil non-reinforced membrane shall be used for flashing the drain assembly.
- 3.15.3. The drain target sheet should be sized and installed to provide for a minimum of 12 inch of exposed 60-mil on all sides of the drain

3.16. PITCH PANS

- 3.16.1. Every reasonable effort shall be made to eliminate the need for pitch pans including the removal of all existing pans. Contact MRSM Technical Services for specific design alternatives and recommendations.
- 3.16.2. In the event of no alternative, fabricate pitch pans from KEE Clad metal, installed in accordance with manufacturer details, ensuring proper attachment, maintaining a minimum of 2" clearance around the penetration.
- 3.16.3. Pitch pans shall be filled with non-shrinking grout to within 1" of the top of the pan. Allow the grout to dry and fill remainder of the pan with membrane manufacturers pourable sealant.
- 3.16.4. Pitch pans and the sealant will require periodic maintenance by the County's maintenance personnel.
- 3.16.5. Pitch pans are maintenance items and shall not be considered as part of the warranty.

3.17. EXPANSION JOINTS

- 3.17.1. Flash all expansion joints in accordance with authorized/approved details. Fasten all expansion joint material according to MRSM specifications. Ensure the expansion material has sufficient material to expand to the widest point in expansion without causing undue stress on the expansion joint material.
- 3.17.2. If the expansion joint is a "pre-formed" system, the manufacturer, description and a drawing illustrating the method of installation must be included in the contractor's submittals.

3.18. SEALANTS

- 3.18.1. Apply authorized sealant(s) to all surface mounted reglets and per project requirements. Sealant(s) are to shed water. Follow all manufacturer's instructions and installation guides.
- 3.18.2. Use primer when recommended by the manufacturer.
- 3.18.3. Sealants will require periodic maintenance by the County's maintenance personnel.

3.19. TEMPORARY SEALS

- 3.19.1. At the end of each working day or at the sign of rain, install temporary, 100% watertight seal(s) where the completed new roofing adjoins the uncovered deck.
- 3.19.2. If water is allowed to enter beneath the newly completed roofing, the affected area(s) shall be removed and replaced at no additional expense to the County.
- 3.19.3. Prior to the commencement of work, cut out and remove all contaminated membrane, insulation, roof cement or sealant and properly dispose off site.

3.20. WALKWAYS

- 3.20.1. Protection pads shall be installed at staging areas for roof top equipment maintenance or areas subject to regular foot traffic as designated by contract and/or drawings.
- 3.20.2. If walkway or protection pads are not available due to supply chain issues, contact MANUFACTURER for substitute recommendations.

3.21. LIGHTNING PROTECTION

- 3.21.1. The installation of lightning protection must be coordinated with the authorized roofing contractor, UL certified lightning contractor and the

County.

- 3.21.2. The lightning protection must be installed in such a manner that base plates, air terminals and cables do not penetrate the roofing membrane without the use of pre-approved flashing details.

3.22. COMPLETION

- 3.22.1. Remove any and all debris, excess materials and scrap of any kind from the roof and surrounding premises prior to demobilization.
- 3.22.2. Inspect all field welds, detailing and terminations to ensure a 100% the watertight installation.

3.23. WARRANTY INSPECTION

- 3.23.1. Upon completion of the project, the authorized roofing contractor shall complete and submit the MRSM Project Completion Notice.
- 3.23.2. Upon receipt of the notice of completion, a Technical Representative of the MRSM shall schedule an inspection with a representative of the authorized roofing contractor to thoroughly review the installation and verify compliance with MRSM specifications.
- 3.23.3. Any corrections or modifications necessary for compliance with the specifications and acceptance for warranty (punch list) will be noted on the Final Inspection for Warranty Form.
- 3.23.4. Upon completion of all punch list items and final acceptance of the installation, a warranty as authorized by the MRSM will be issued.