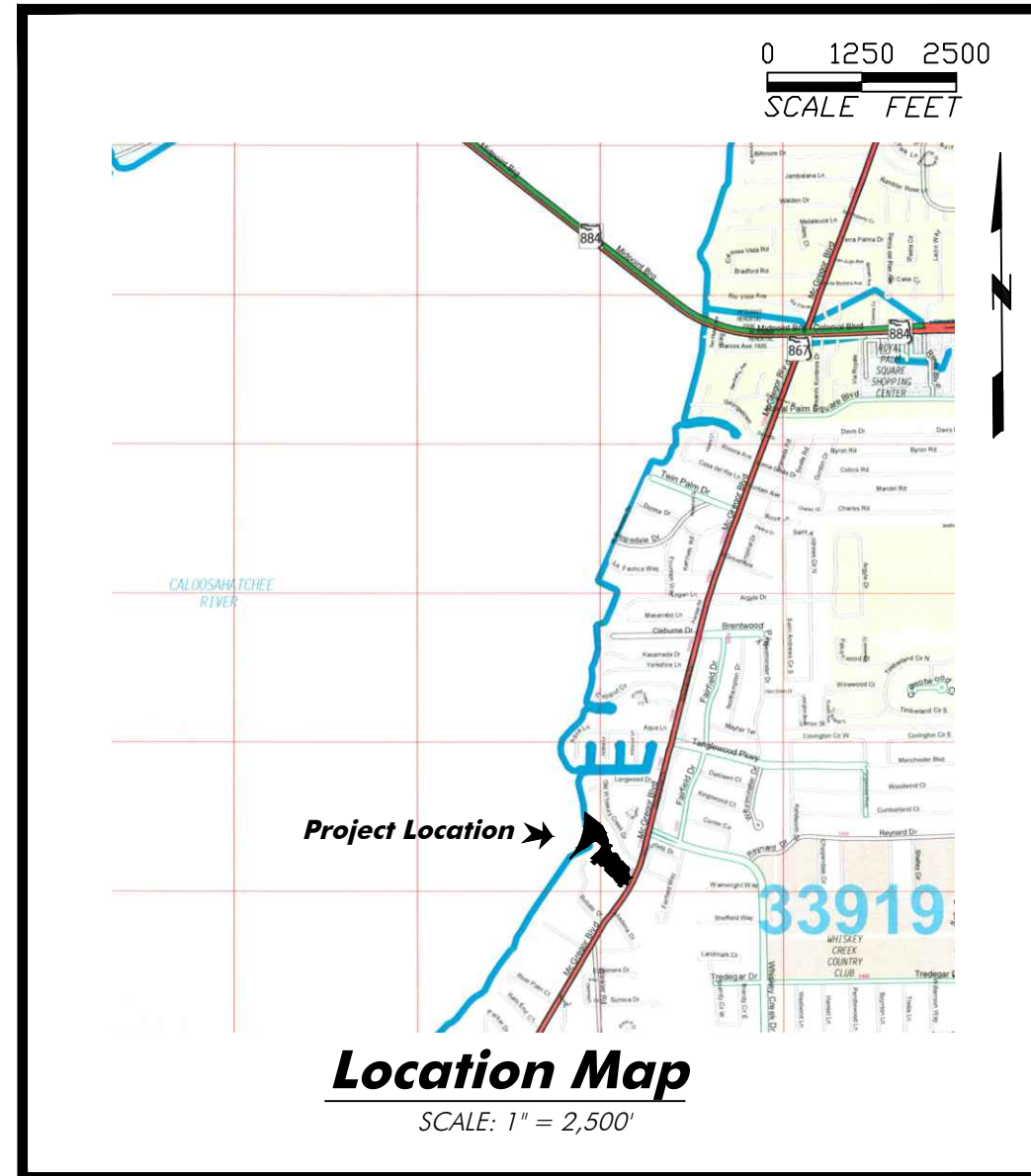
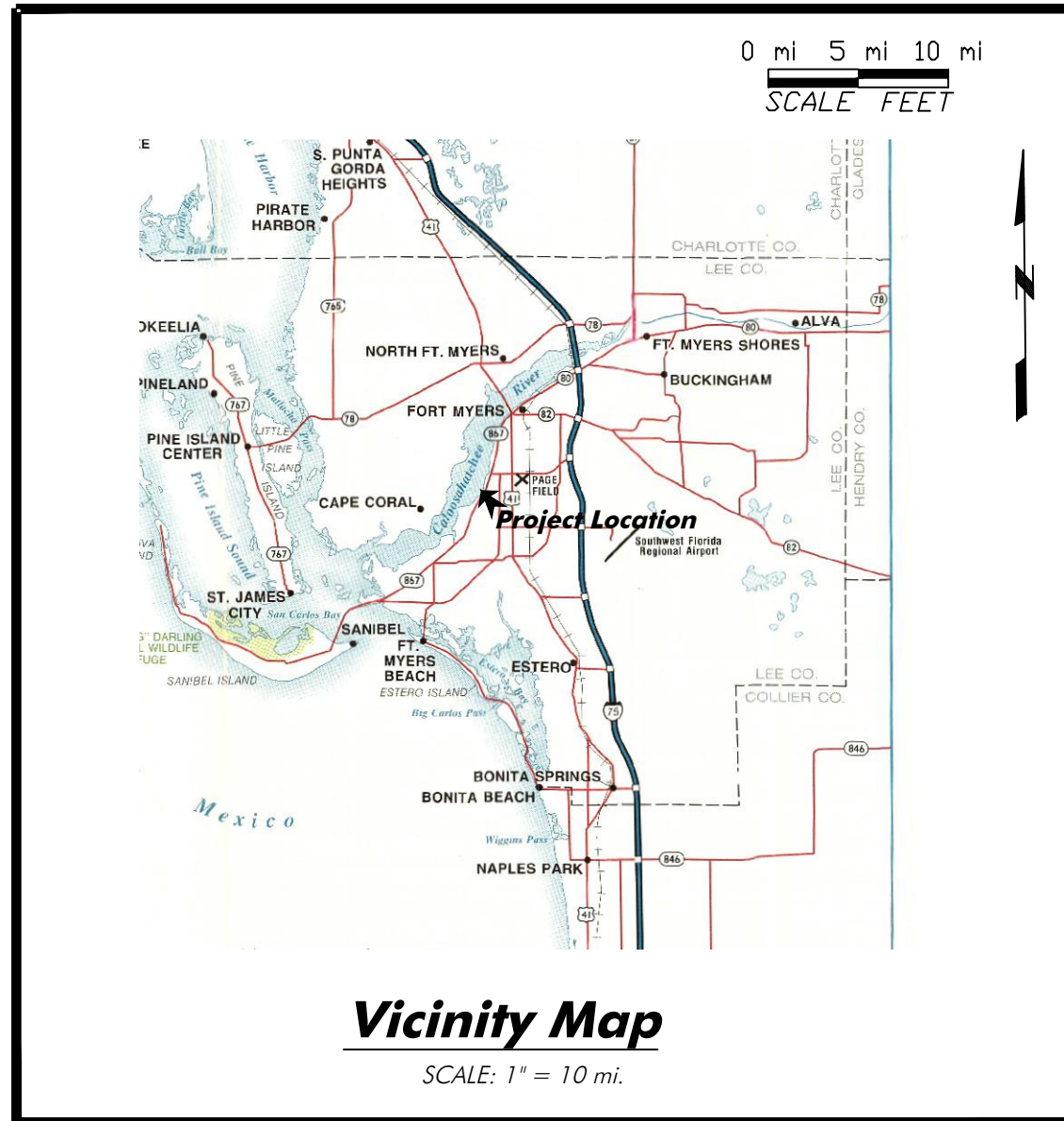


SECTION: 10
 TOWNSHIP: 45 S
 RANGE: 24 E

Call 48 Hours before you dig in Florida
 It's the Law
 811
 Sunshine State one call of Florida, Inc

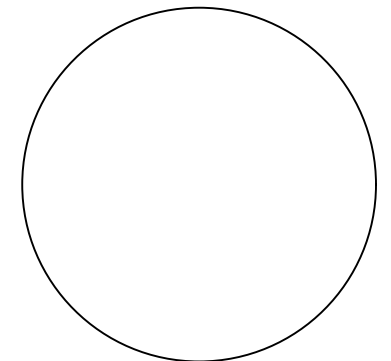
LEE COUNTY WHISKEY CREEK ENTRANCE CHANNEL DREDGING

Plans Prepared for:
**Lee County Office of
 Management and Budget**
 2115 2nd Street
 Fort Myers, FL 33901



Drawing Index:

Page:	Drawing:
1	Cover Page
2	Bathymetric Survey
3	Detail A
4	Detail B
5	Detail C
6	Cross Sections
7	Proposed Turbidity Plan
8	Material Placement Location



Note: The scale of these plans may have changed due to reproduction.



PROVIDED BY:
HWA
 Hans Wilson
 & Associates
 MARINE ENGINEERS and ENVIRONMENTAL CONSULTANTS
 1938 Hill Ave. Ft. Myers, Florida 33901
 Tel: 239-334-6870 Fax: 239-334-7810

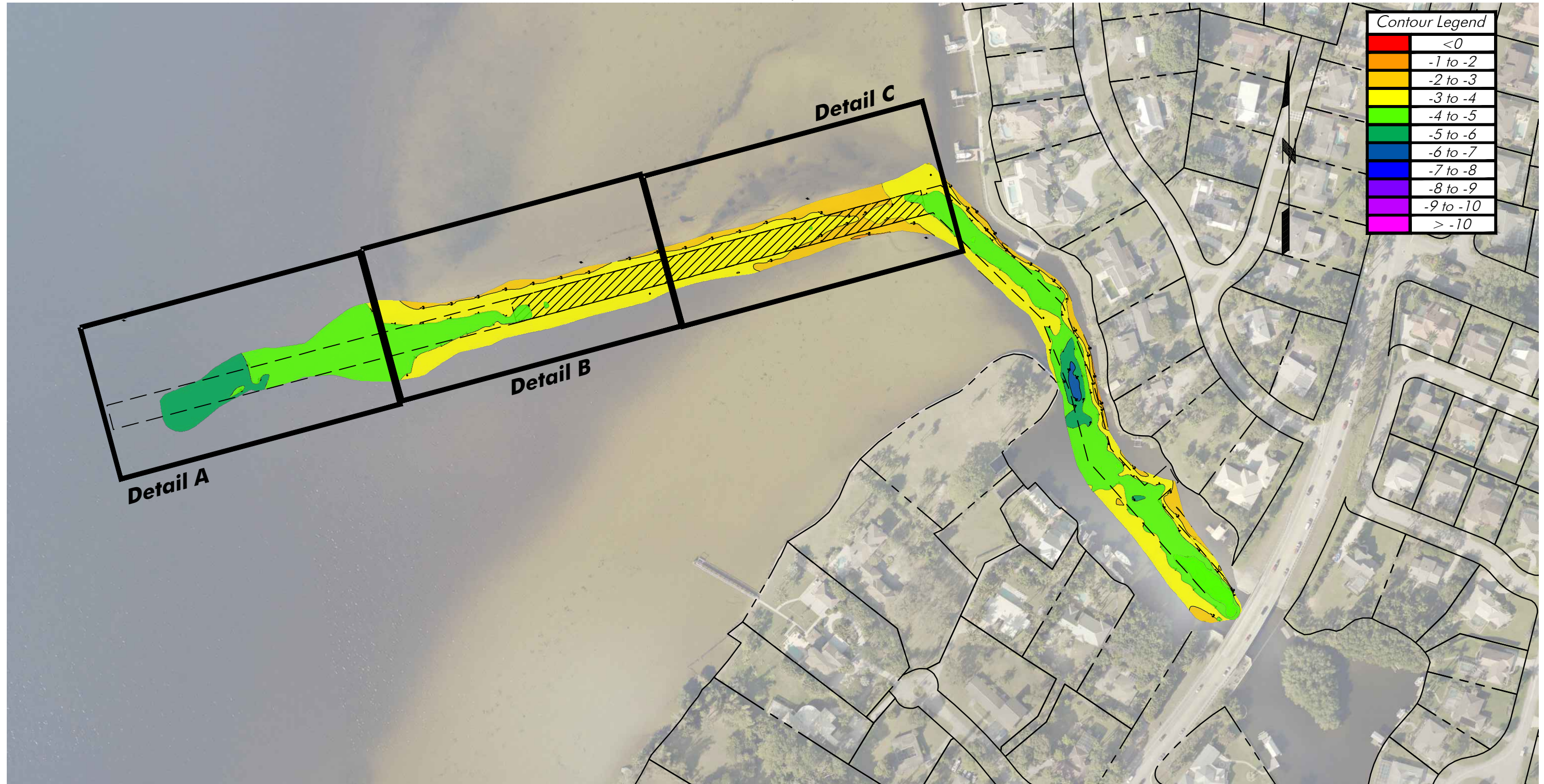
BID PLANS, NOT FOR CONSTRUCTION

Dec 4, 2024 11:21:25 a.m.
 Drawing: LEE29MASTER.DWG

SECTION: 10
TOWNSHIP: 45 S
RANGE: 24 E

0 100 200
SCALE FEET

Lee County Aerial 2019



Notes: Property line per Lee County Property Appraiser. Bathymetric Survey completed by HWA, Inc on 11-18-22. Depths reference MLW per DEP MHW Request, MLW = -0.71' NAVD88.

BID PLANS, NOT FOR CONSTRUCTION

Dec 4, 2024 11:21:25 a.m.
Drawing: LEE29MASTER.DWG



1938 Hill Avenue, Fort Myers, Florida 33901
Office: 239-334-6870 Fax: 239-334-7810
MARINE and ENVIRONMENTAL CONSULTANTS

Bathymetric Survey

Scale 1" = 200'

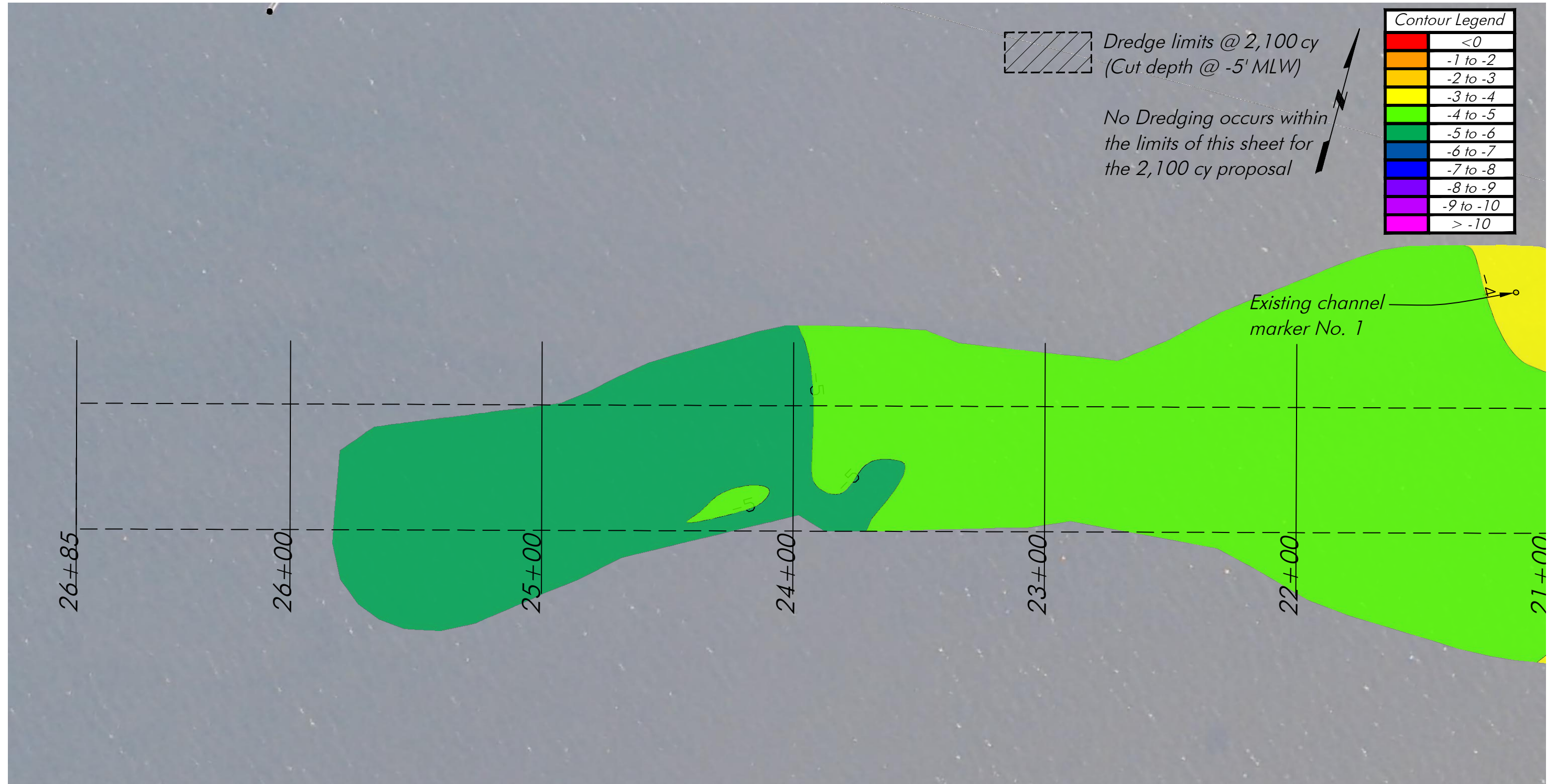
12-4-24

CRY

Lee County
Whiskey Creek MSTBU

SHEET
2/7

Lee County Aerial 2019



Notes: Property line per Lee County Property Appraiser. Bathymetric Survey completed by HWA, Inc on 11-18-22. Depths reference MLW per DEP MHW Request, MLW = -0.71' NAVD88.

BID PLANS, NOT FOR CONSTRUCTION

Dec 4, 2024 11:21:25 a.m.
 Drawing: LEE29MASTER.DWG



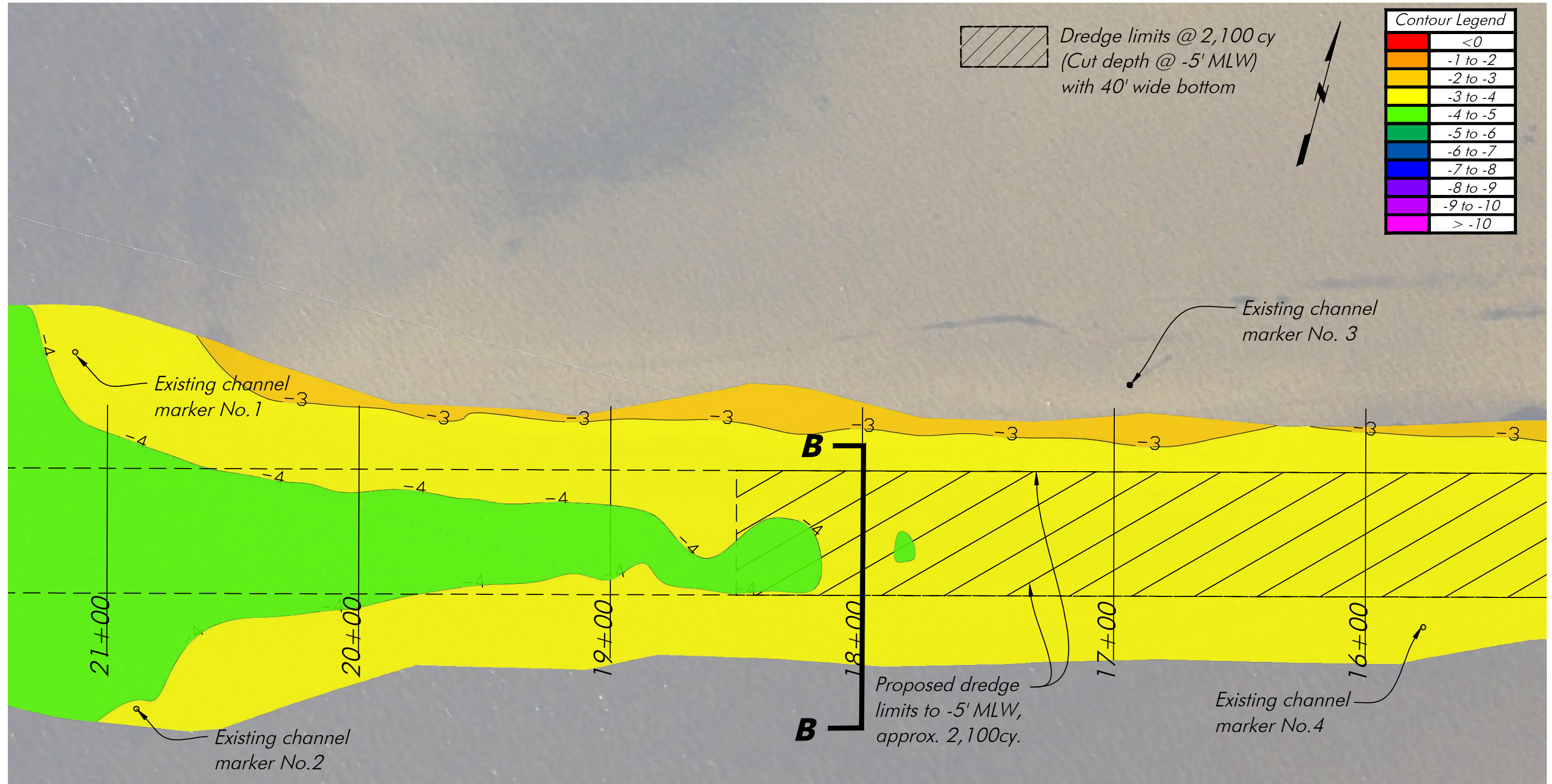
1938 Hill Avenue, Fort Myers, Florida 33901
 Office: 239-334-6870 Fax: 239-334-7810
 MARINE and ENVIRONMENTAL CONSULTANTS

Detail A
 Scale 1" = 40'

12-4-24
 CRY

Lee County
Whiskey Creek MSTBU

SHEET
 3/7



Notes: Property line per Lee County Property Appraiser. Bathymetric Survey completed by HWA, Inc on 11-18-22. Depths reference MLW per DEP MHW Request, MLW = -0.71' NAVD88.

BID PLANS, NOT FOR CONSTRUCTION

Dec 4, 2024 11:21:25 a.m.
 Drawing: LEE29MASTER.DWG



1938 Hill Avenue, Fort Myers, Florida 33901
 Office: 239-334-6870 Fax: 239-334-7810
 MARINE and ENVIRONMENTAL CONSULTANTS

Detail B

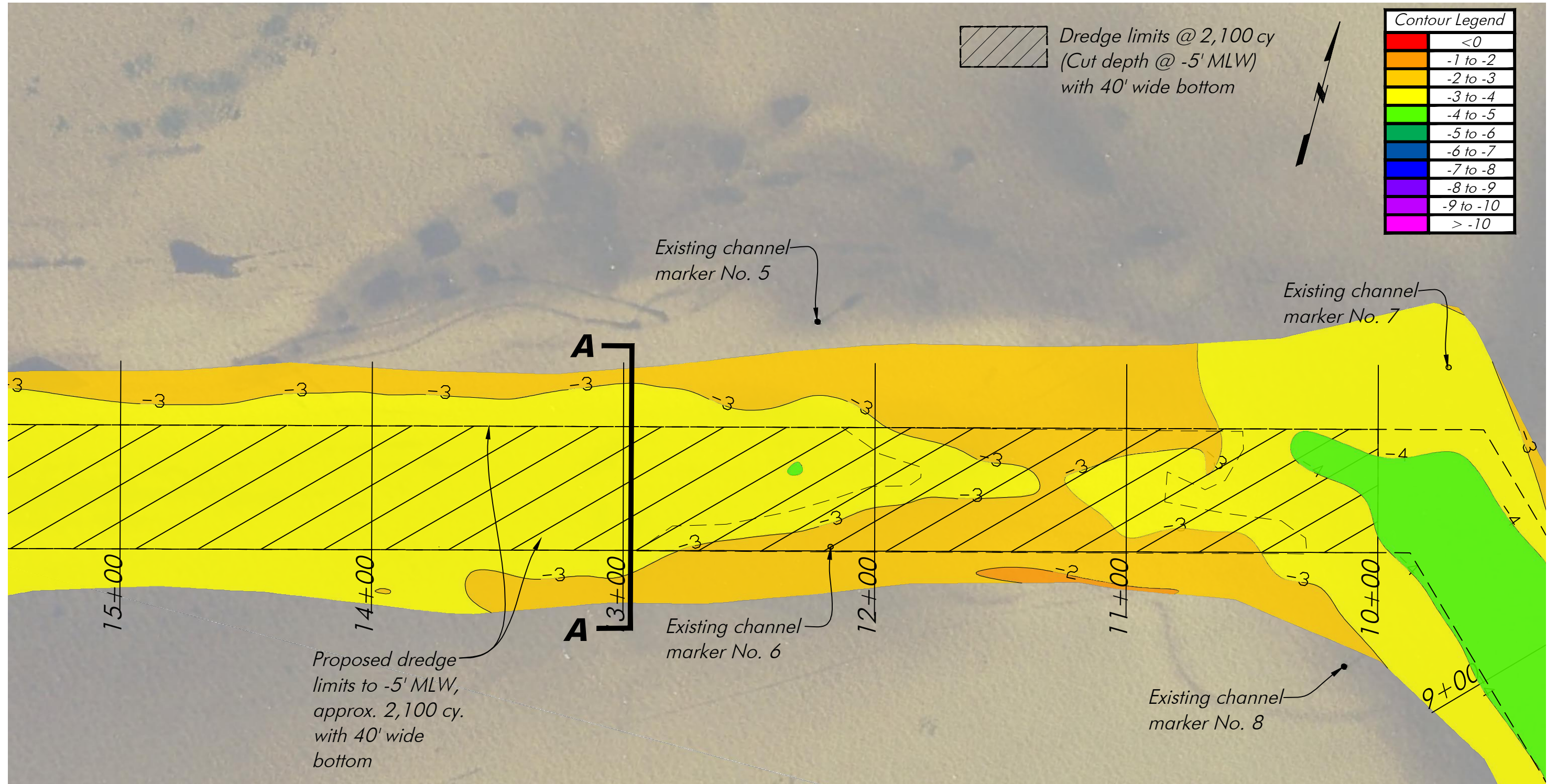
Scale 1" = 40'

12-4-24

CRY

**Lee County
 Whiskey Creek MSTBU**

SHEET
 4/7



Notes: Property line per Lee County Property Appraiser. Bathymetric Survey completed by HWA, Inc on 11-18-22 Depths reference MLW per DEP MHW Request, MLW = -0.71' NAVD88.

BID PLANS, NOT FOR CONSTRUCTION

Dec 4, 2024 11:21:25 a.m.
 Drawing: LEE29MASTER.DWG



1938 Hill Avenue, Fort Myers, Florida 33901
 Office: 239-334-6870 Fax: 239-334-7810
 MARINE and ENVIRONMENTAL CONSULTANTS

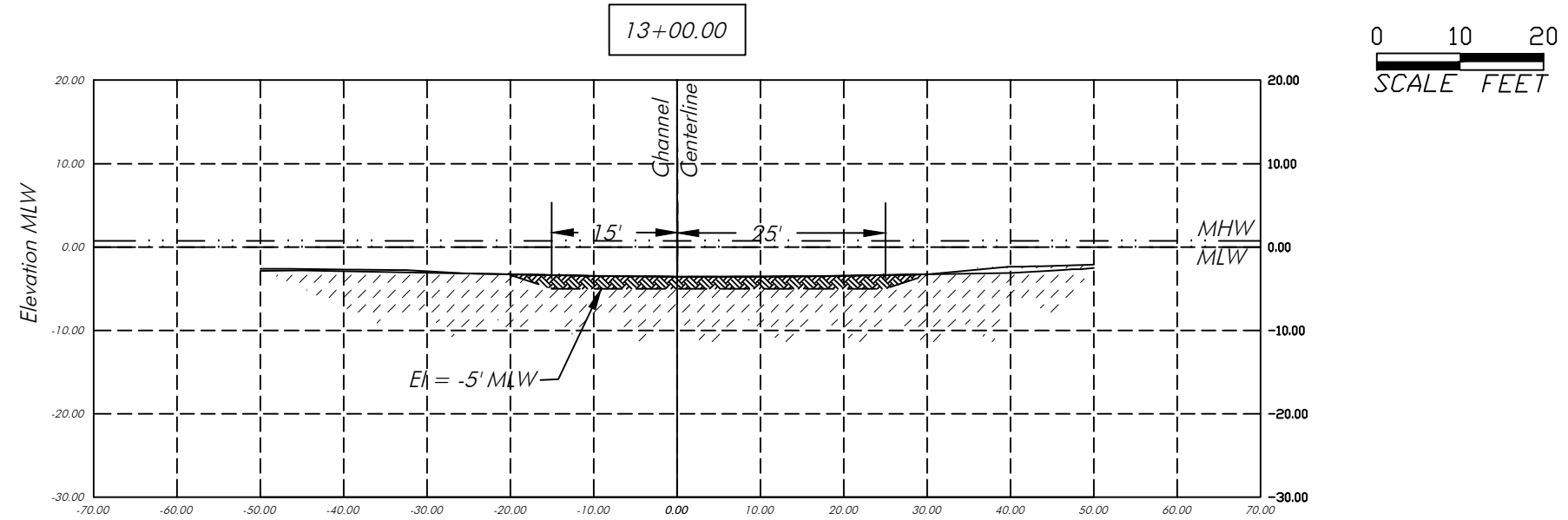
Detail C
 Scale 1" = 40'

12-4-24
 CRY

Lee County
Whiskey Creek MSTBU

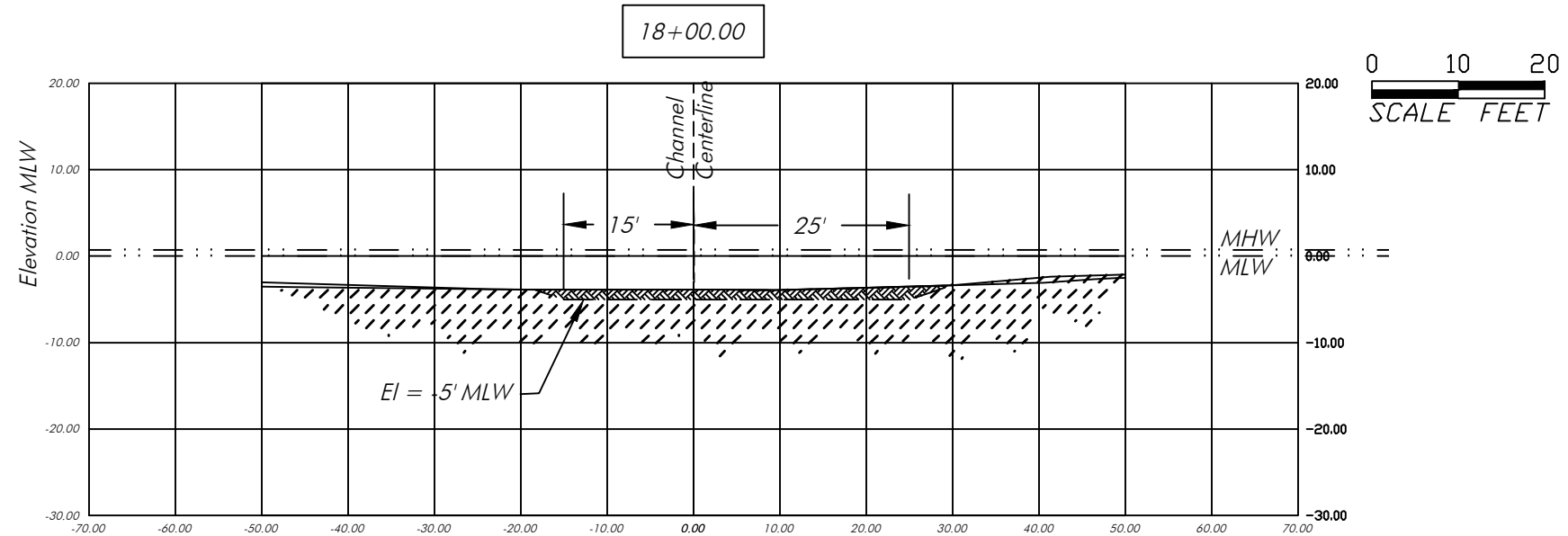
SHEET
 5/7

SECTION: 10
 TOWNSHIP: 45 S
 RANGE: 24 E



Cross Section A-A

SCALE: 1" = 20'



Cross Section B-B

SCALE: 1" = 20'

Notes: Bathymetric Survey completed by HWA, Inc on 11-18-22. Depths reference MLW per DEP MHW Request, MLW = -0.71' NAVD88.

BID PLANS, NOT FOR CONSTRUCTION

Dec 4, 2024 11:21:25 a.m.
 Drawing: LEE29MASTER.DWG



1938 Hill Avenue, Fort Myers, Florida 33901
 Office: 239-334-6870 Fax: 239-334-7810
 MARINE and ENVIRONMENTAL CONSULTANTS

Typical Cross Sections

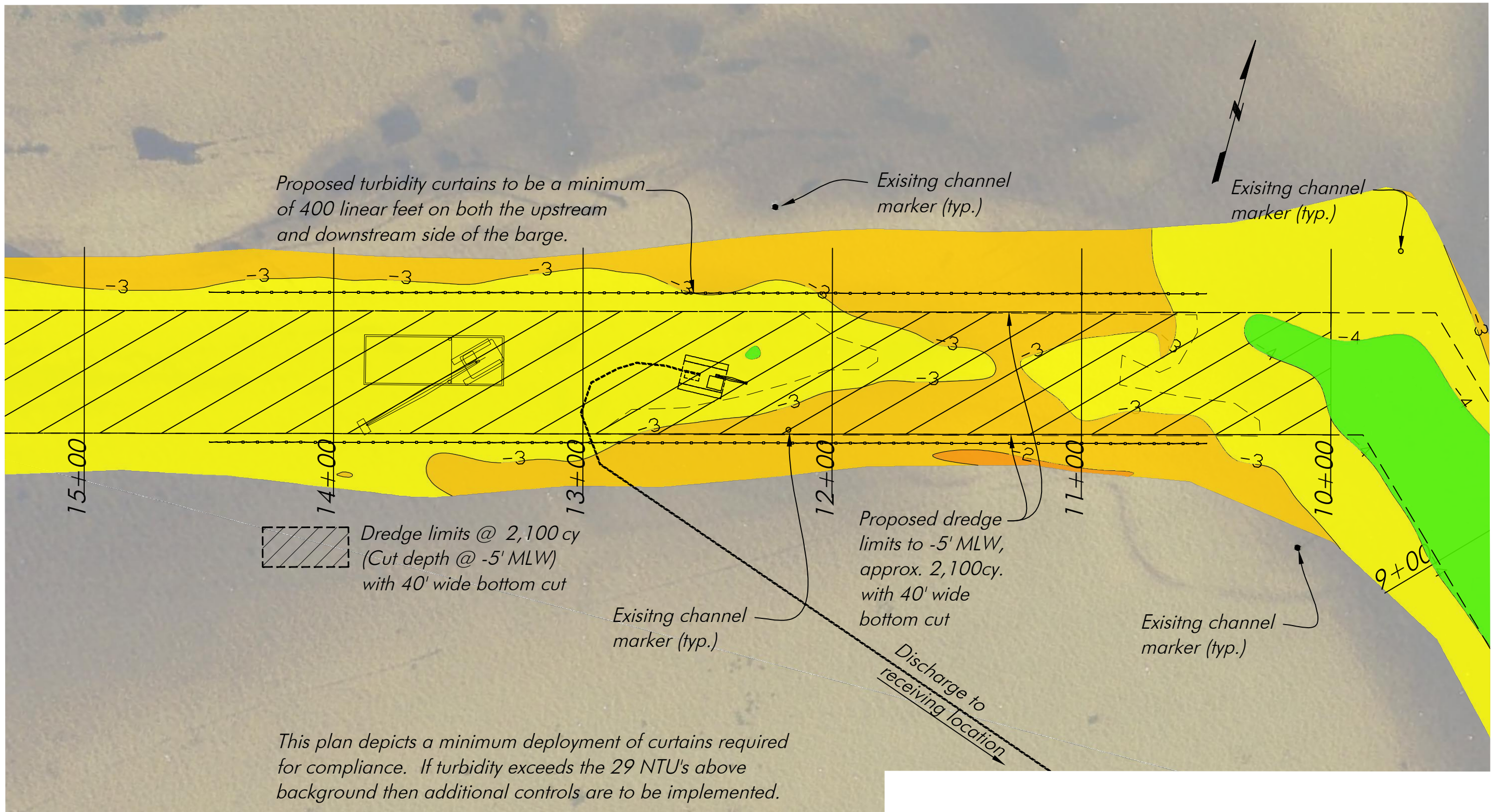
Scale 1" = 20'

12-4-24

CRY

Lee County
Whiskey Creek MSTBU

SHEET
 6/7



BID PLANS, NOT FOR CONSTRUCTION

Dec 4, 2024 11:21:25 a.m.
 Drawing: LEE29MASTER.DWG



1938 Hill Avenue, Fort Myers, Florida 33901
 Office: 239-334-6870 Fax: 239-334-7810
 MARINE and ENVIRONMENTAL CONSULTANTS

Proposed Turbidity Controls

Scale 1" = 40'

12-4-24

CRY

Lee County Whiskey Creek MSTBU

SHEET
7/7