

UTILITIES PROVIDING SERVICE:

WATER AND SEWER:

LEE COUNTY UTILITIES
1500 MONROE ST
FORT MYERS, FLORIDA 33901
PHONE: (239) 533-8181

TELEPHONE:

CENTURYLINK
1520 LEE STREET
FORT MYERS, FLORIDA 33901
PHONE: (239) 336-2030

CABLE:

CENTURYLINK
1520 LEE STREET
FORT MYERS, FLORIDA 33901
PHONE: (239) 336-2030

ELECTRIC:

LEE COUNTY ELECTRIC COOPERATIVE
4980 BAYLINE DRIVE
FORT MYERS, FLORIDA 33917
PHONE: (239) 656-2300
FAX: (239) 995-4287

GARBAGE COLLECTION:

WASTE MANAGEMENT
11990 STATE ROAD 82
FORT MYERS, FLORIDA 33913
PHONE: (239) 334-1224

FIRE CONTROL DISTRICT:

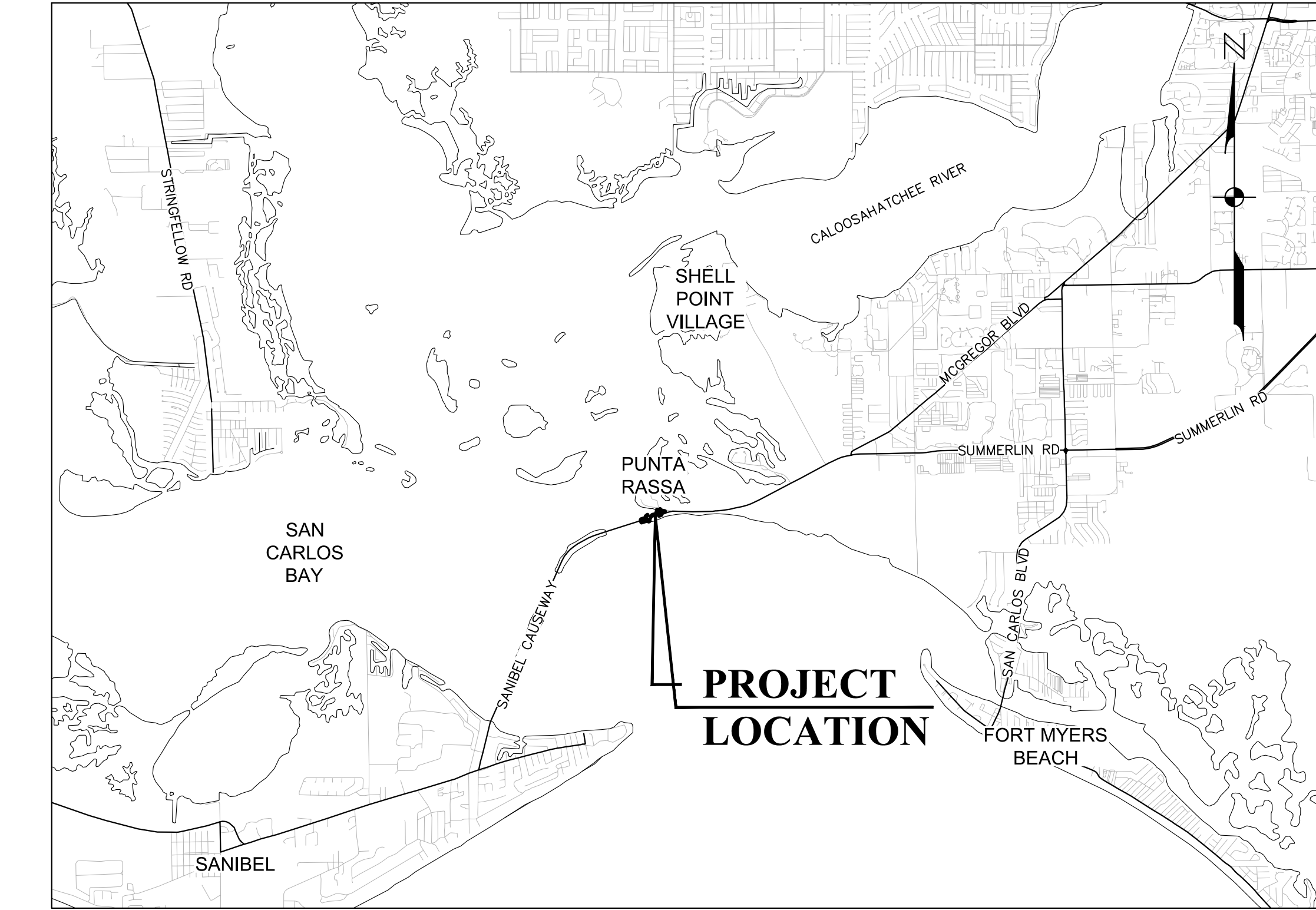
IONA-MCGREGOR FIRE DISTRICT
6061 SOUTH POINTE BOULEVARD
FORT MYERS, FLORIDA 33919
PHONE: (239) 433-0660
FAX: (239) 425-9301

GAS:

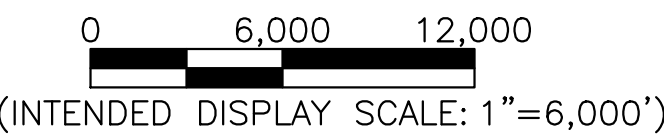
TECO PEOPLES GAS
5901 ENTERPRISE PKWY
FORT MYERS, FLORIDA 33905
PHONE: (877) 832-6747

INDEX OF PLANS

Sheet Number	Sheet Title
C01	COVER SHEET
C02	GENERAL NOTES & ABBREVIATIONS
C03	AERIAL PHOTOGRAPH MAP
C04	EXISTING CONDITIONS & DEMOLITION PLAN
C05	EROSION CONTROL PLAN
C06	SITE PLAN
C07	UTILITY PLAN



LOCATION MAP



FEBRUARY 2025

CONSTRUCTION PLANS

FOR

PUNTA RASSA BOAT RAMP

IMPROVEMENTS

SECTION 09, TOWNSHIP 46 S., RANGE 23 E.

LEE COUNTY, FLORIDA

OWNER / DEVELOPER

LEE COUNTY
PO BOX 398
FORT MYERS FL 33902
PHONE: (239) 533-2111

STRAP NUMBER

09-46-23-00-00002.0060

ZONING

AG-2 (LCO)

SITE ADDRESS

18700 MCGREGOR BLVD
FORT MYERS FL 33908

SIZE OF PROJECT

±6.67 ACRES

THIS IS TO CERTIFY THAT THESE PLANS AND THE ASSOCIATED CONSTRUCTION PROJECT ARE IN SUBSTANTIAL COMPLIANCE WITH THE LEE COUNTY LAND DEVELOPMENT CODE WITH THE EXCEPTION OF THE FOLLOWING DEVIATIONS WHICH HAVE BEEN APPROVED BY THE ASSISTANT COUNTY MANAGER.

DEVIATIONS: NONE

FLORIDA P.E. #: 82277

ENGINEER SIGNATURE DATE

DEVELOPMENT ORDER APPROVED:
LEE COUNTY ADMINISTRATION

MARC MORA DATE
ASSISTANT COUNTY MANAGER

NOTICE TO ALL
CONTRACTORS

IT'S THE LAW IN FLORIDA
2 BUSINESS DAYS BEFORE
YOU DIG
CALL SUNSHINE
1-800-432-4770

STATE, COUNTIES & CITIES
ARE "NOT" PART OF THE
ONE CALL SYSTEM THEY
MUST BE CALLED
INDIVIDUALLY.



JOHNSON
ENGINEERING

— An Apex Company —

REGISTERED PROFESSIONAL ENGINEER
FLORIDA LICENSE NO. 82277

TYLER M. SHARPE, PE

DATE

BID DOCUMENTS

ABBREVIATIONS

AC	ALTERNATE
ALT	APPROXIMATE
ASB	ASBESTOS
BM	BENCHMARK
BLDG	BUILDING
BOT	BOTTOM
CB	CATCH BASIN
CF	CUBIC FEET
CFM	CUBIC FEET PER MINUTE
CI	CAST IRON
CIP	CAST IRON PIPE
CJ	CONSTRUCTION JOINT
CMP	CORRUGATED METAL PIPE
CO	CLEANOUT
CV	CHECK VALVE
CF	CUBIC FOOT
CY	CUBIC YARD
CL	CENTER LINE
CLKG	CAULKING
CLF	CHAIN LINK FENCE
COL	COLUMN, COLOR
CONC	CONCRETE
CONST	CONSTRUCTION
CONT	CONTINUOUS
CONTR	CONTRACTOR
CTRS	CENTERS
CU	COPPER
CU, IN.	CUBIC INCH
DIA, Ø	DIAMETER
DIAG	DIAGONAL
DIM	DIMENSION
DIST.	DISTANCE
DIP	DUCTILE IRON PIPE
DE	DRAINAGE EASEMENT
DWG	DRAWING
E	EAST
EL/ELEV	ELEVATION
EQUIP	EQUIPMENT
ERCP	ELLIPITICAL REINFORCED CONCRETE PIPE
EX	EXISTING
FF	FINISHED FLOOR
FFE	FINISHED FLOOR ELEVATION
FM	FORCE MAIN
FDC	FIRE DEPARTMENT CONNECTION
FDN	FOUNDATION
FIN	FINISH
FRP	FIBERGLASS REINFORCED PLASTIC
FT	FEET
G	NATURAL GAS
GC	GENERAL CONTRACTOR
GI	GALVANIZED IRON
GPM	GALLONS PER MINUTE
GV	GATE VALVE
GA	GALLON
GAL	GALVANIZED
GR	GRADE
HDPE	HIGH DENSITY POLYETHYLENE
HOR	HORIZONTAL
HYD	HYDRANT
ID	INSIDE DIAMETER
IDO	IONA DRAINAGE DISTRICT
INV	INVERT
IRR	IRRIGATION
LAE	LAKE ACCESS EASEMENT
LCUE	LEE COUNTY UTILITY EASEMENT
LF	LINEAL FEET
LME	LAKE MAINTENANCE EASEMENT
LMT	LAKE MAINTENANCE TRACT
MGD	MILLION GALLONS PER DAY
MH	MANHOLE
MJ	MECHANICAL JOINT
MAX	MAXIMUM
MECH	MECHANICAL
MES	MITERED END SECTION
MFR	MANUFACTURER
MIN	MINIMUM
MISC	MISCELLANEOUS
N	NORTH
NE	NORTHEAST
NW	NORTHWEST
NPW	NON POTABLE WATER
NTS	NOT TO SCALE
NUM/#	NUMBER
NOM	NOMINAL
NG	NATURAL GAS
OC	ON CENTERS
OCW	ON CENTER EACH WAY
OD	OUTSIDE DIAMETER
PCF	POUNDS PER CUBIC FOOT
PSF	POUNDS PER SQUARE FOOT
PV	PLUG VALVE
PSI	POUNDS PER SQUARE INCH
PVC	POLYVINYL CHLORIDE
POLY, PE	POLYETHYLENE
PAVT	PAVEMENT
PC	POINT OF CURVATURE
PGL	PROPOSED GRADE LINE
PL	PROPERTY LINE
PLBG	PLUMBING
PLWD	PLYWOOD
PW	POTABLE WATER
PT	POINT OF TANGENCY
PUE	PUBLIC UTILITY EASEMENT
PVI	POINT OF VERTICAL INTERSECTION
QUAN	QUANTITY
R	RADIUS
RD	ROAD
RCR	REINFORCED CONCRETE PIPE
REQ'D	REQUIRED
ROW	RIGHT OF WAY
RU	REUSE LINE
R/W	RIGHT OF WAY
S	SOUTH
SE	SOUTHEAST
SW	SOUTHWEST
SS	SANITARY SEWER
SAN	SANITARY
SCH	SCHEDULE
SECT	SECTION
SEW	SEWER
SH	SHEET
SPEC	SPECIFICATION
SO	SQUARE
ST	STREET
STA	STATION
STL	STEEL
STD	STANDARD
SUR	SURFACE
SYM	SYMMETRICAL
TOE	TOE OF SLOPE
TOR	TOP OF BANK
THK	THICK
TEL	TELEPHONE
TEMP	TEMPERATURE
TRANS	TRANSFORMER
TYP	TYPICAL
UE	UTILITY EASEMENT
VERT	VERTICAL
W	WATER
WM	WATER MAIN
W/	WITH
W/O	WITHOUT
WD	WOOD
WT	WEIGHT
WV	WATER VALVE
WH	WALL HYDRANT

SYMBOLS

	GATE VALVE		IRRIGATION SERVICE (DOUBLE)
	TEE ASSEMBLY		IRRIGATION SERVICE (SINGLE)
	REDUCER		SEWER SERVICE (DOUBLE)
	BLOW OFF		SEWER SERVICE (SINGLE)
	FIRE HYDRANT		WATER SERVICE (DOUBLE)
	FIRE HYDRANT ASSEMBLY W/ GATE VALVE		WATER SERVICE (SINGLE)
	MITERED END SECTION		HEADWALL
	MANHOLE W/ NUMBER		DRAINAGE INLET (SEE PLAN FOR TYPES)
	PLUG VALVE		THROAT INLET
			FLARED END SECTION

HATCH PATTERNS

	WETLAND		EXISTING LAKE TO BE FILLED
	UPLAND BUFFER		PROPOSED LAKE
	UPLAND PRESERVE		LITTORAL SHELF AREA
	INDIGENOUS AREA		COMPENSATING LITTORAL PLANTING AREA
	NATURAL AREA		RIPRAP / GRAVEL
	FILTER MARSH		BRICK PAVERS
	EXISTING LAKE		

NOTE:
HATCH PATTERNS ARE FOR ILLUSTRATIVE PURPOSES
ONLY. ACTUAL HATCH PATTERNS ON DRAWING MAY
VARY IN SCALE & ANGLE

LINETYPES

	EXISTING	PROPOSED
RIGHT-OF-WAY LINE	---	---
CENTER LINE	---	---
LAKE MAINTENANCE EASEMENT	---	---
PUBLIC UTILITY EASEMENT	---	---
DRAINAGE EASEMENT	---	---
WETLAND BOUNDARY	---	---
FORCE MAIN	---	---
SANITARY SEWER	---	---
WATER MAIN	---	---
IRRIGATION MAIN	---	---
RE-USE MAIN	---	---
PERIMETER BERM	---	---
FENCE LINE	---	---
SILT FENCE	---	---
BULKHEAD	---	---
STRUCTURAL BUFFER	---	---

GENERAL NOTES:

- ELEVATIONS REFERENCE TO NAVD 1988. CONVERSION TO NGVD 1929 IS: NAVD 1988 + 1.17 = NGVD 1929.
- THE GENERAL NOTES MUST BE PART OF THIS ENTIRE DOCUMENT PACKAGE AND ARE PART OF THE CONTRACT DOCUMENTS. THE GENERAL NOTES ARE REFERENCED HEREIN AND MUST BE REFERRED TO BY THE CONTRACTOR. THE CONTRACTOR MUST BE FAMILIAR WITH AND ACKNOWLEDGE FAMILIARITY WITH ALL THE GENERAL NOTES AND ALL OF THE PLANS SPECIFICATION NOTES.
- CONTRACTOR MUST VERIFY ALL DIMENSIONS INCLUDED WITHIN THE PLAN SET AND SHOULD NOT SCALE OFF THE DRAWINGS DUE TO POTENTIAL PRINTING INACCURACIES. ALL DIMENSIONS ARE TO BE CHECKED AND CONFIRMED BY THE GENERAL CONTRACTOR PRIOR TO PREPARATION OF SHOP DRAWINGS, FABRICATION/ORDERING OF PARTS AND MATERIALS AND START OF SITE WORK.
- JOHNSON ENGINEERING, INC. IS NOT RESPONSIBLE FOR AND HAVE NO CONTRACTUAL LEGAL OR OTHER RESPONSIBILITIES FOR JOB SITE SAFETY, JOB SITE SUPERVISION, OR ANYTHING RELATED TO THE SAME. JOHNSON ENGINEERING, INC. IS NOT RESPONSIBLE TO IDENTIFY OR REPORT ANY JOB SITE SAFETY ISSUES OR ANY JOB SITE CONDITIONS, AT ANY TIME.
- ALL CONSTRUCTION SHALL BE IN ACCORDANCE WITH STATE OF FLORIDA, DEPARTMENT OF TRANSPORTATION, STANDARD PLANS (LATEST EDITION), LEE COUNTY DEVELOPMENT STANDARDS AND SPECIFICATIONS AND LEE COUNTY UTILITIES REQUIREMENTS.
- CONTRACTOR SHALL RETAIN, ON THE WORK SITE, COPIES OF ANY PERMITS NECESSARY FOR CONSTRUCTION.
- CONTRACTOR SHALL BE RESPONSIBLE FOR OBTAINING ANY REQUIRED DEWATERING PERMITS.
- CONTRACTOR SHALL BE RESPONSIBLE FOR OBTAINING ANY REQUIRED TREE REMOVAL PERMITS.
- THE SITE CONTRACTOR SHALL BECOME FAMILIAR WITH THE GEOTECHNICAL REPORT IF ONE WAS PREPARED. THE CONTRACTOR SHALL COMPLY WITH ALL THE SITE PREPARATION AND OTHER SITE RELATED ITEMS, RECOMMENDATIONS AND PROCEDURES.
- CONTRACTOR TO VERIFY ENGINEER'S BUILDING FOOTPRINT SIZE MATCHES ARCHITECTS BUILDING SIZE BEFORE BEGINNING CONSTRUCTION.
- THIS PROJECT WILL NOT ADVERSELY IMPACT ANY SURFACE WATER OR GROUNDWATER.
- CONTRACTOR SHALL BE RESPONSIBLE FOR MAINTAINING TRAFFIC AND USAGE OF THE EXISTING STREETS ADJACENT TO THE PROJECT. ALL TEMPORARY TRAFFIC CONTROL SHALL BE IN ACCORDANCE WITH FDOT STANDARD PLANS INDEX 102-100 THRU 102-670, OR THE MANUAL ON UNIFORM TRAFFIC CONTROL DEVICES (MUTCD), (LATEST EDITION).
- CONTRACTOR IS REQUIRED TO OBTAIN FROM THE ENGINEER AND OWNER WRITTEN APPROVAL FOR ANY DEVIATIONS FROM THE PLANS AND/OR SPECIFICATIONS.
- EXISTING OFF-SITE DRAINAGE PATTERNS SHALL BE MAINTAINED DURING CONSTRUCTION.
- ANY PUBLIC LAND CORNER WITHIN THE LIMITS OF CONSTRUCTION IS TO BE PROTECTED. IF A CORNER MONUMENT IS IN DANGER OF BEING DESTROYED AND HAS NOT BEEN PROPERLY REFERENCED, THE CONTRACTOR SHOULD NOTIFY THE OWNER/ENGINEER WITHOUT DELAY.
- THE LOCATION OF EXISTING UTILITIES, PAVEMENT, VEGETATION, AND MISCELLANEOUS IMPROVEMENTS ARE APPROXIMATE ONLY. THE EXACT LOCATIONS SHALL BE FIELD VERIFIED BY THE CONTRACTOR.
- CONTRACTOR SHALL NOTIFY THE LEE COUNTY DIVISION OF DEVELOPMENT REVIEW A MINIMUM OF 72 HOURS PRIOR TO ALL REQUIRED INSPECTIONS.
- CONTRACTOR TO PROVIDE SILT FENCE AND OTHER APPROPRIATE MEASURES TO AFFECT THE FILTRATION OF SURFACE WATER FLOWS AND TO PROVIDE EROSION PROTECTION DURING CONSTRUCTION ACTIVITIES. PROTECTION IS TO BE MAINTAINED DURING THE CONSTRUCTION PERIOD UNTIL DISTURBED SOILS HAVE BEEN STABILIZED WITH GRASS OR SUITABLE EROSION PROTECTION TREATMENT.
- DURING CONSTRUCTION, GRATE INLET AND JUNCTION BOX OPENINGS SHALL BE COVERED WITH FILTER FABRIC (MIRAFI 140N OR APPROVED EQUAL) TO PREVENT DEBRIS AND FILL FROM FALLING INTO THE INLET.
- CONTRACTOR SHALL USE DESIGNATED CONSTRUCTION ENTRANCES FOR EMPLOYEES AND DELIVERY OF MATERIALS.
- CONTRACTOR SHALL CLEAR ALL EXCAVATION AND FILL AREAS AS SHOWN ON THE PLANS. ACTUAL LIMITS OF CLEARING MAYBE ADJUSTED IN THE FIELD BY OWNER OR ENGINEER.
- CONTRACTOR SHALL REMOVE ALL MUCK AND OTHER UNSUITABLE MATERIAL FROM FILL AREAS PRIOR TO PLACEMENT OF FILL. ALL MUCK AND OTHER UNSUITABLE MATERIAL EXCAVATED FROM LAKES OR REMOVED FROM FILL AREAS SHALL BE STOCKPILED AT THE PROPOSED PROJECT AS DETERMINED BY THE OWNER.
- ALL CONSTRUCTION DEBRIS AND OTHER WASTE MATERIAL SHALL BE DISPOSED OF OFF-SITE IN ACCORDANCE WITH APPLICABLE REGULATION.
- CONTRACTOR SHALL PROMPTLY REPORT ALL FIELD CHANGES TO THE ENGINEER.
- HORIZONTAL LOCATIONS OF INLETS AND STORM DRAINS MAY BE FIELD ADJUSTED TO PRESERVE EXISTING VEGETATION WITH PERMISSION OF ENGINEER. IN ADDITION, SITE GRADES MAY BE ADJUSTED IN FIELD BY ENGINEER.
- HORIZONTAL LOCATION OF STORM DRAINAGE HEADWALLS ARE SUBJECT TO MODIFICATION IN THE FIELD BY ENGINEER TO PRESERVE EXISTING VEGETATION.
- THE CONTRACTOR IS REQUIRED TO ADJUST ALL VALVE BOXES, MANHOLE RIMS, GRATES, ETC. AS NECESSARY TO MATCH PROPOSED GRADES.
- EXISTING FACILITIES SHALL BE RESTORED TO A CONDITION EQUIVALENT TO THAT WHICH EXISTED PRIOR TO COMMENCING CONSTRUCTION, AT NO ADDITIONAL COST TO OWNER.
- ALL UNPAVED AREAS DISTURBED DURING CONSTRUCTION SHALL BE SODED UNLESS NOTED OTHERWISE.
- CONTRACTOR SHALL SOD ALL CUL-DE-SAC AND MEDIAN ISLANDS.
- ALL CONCRETE SIDEWALKS SHALL HAVE CONTROL JOINTS CUT ON 5-FOOT CENTERS AND EXPANSION JOINTS PLACED ON 60-FOOT CENTERS, CHANGES IN DIRECTION, AND ABUTTING SEPARATE POURS.
- THE CONTRACTOR SHALL ACCURATELY PLOT THE LOCATIONS AND DEPTHS OF ALL IMPROVEMENTS INSTALLED ON A FINAL SET OF RECORDED DRAWINGS WHICH SHALL BE DELIVERED TO THE ENGINEER.
- THE CONTRACTOR SHALL ASSURE COMPLIANCE WITH ANY OSHA, EPA, AND/OR OTHER FEDERAL OR STATE OF FLORIDA RULES, REGULATIONS OR OTHER REQUIREMENTS, AS EACH MAY APPLY.

SITE DEMOLITION:

- ANY SITE DEMOLITION IS BASED ON AVAILABLE INFORMATION PROVIDED TO ENGINEER AND MAY NOT COVER ALL ASPECTS OF THE PROJECT. INCLUDING BUT NOT LIMITED TO IRRIGATION LINES/SERVICES AND ELECTRICAL SERVICES. IT IS THE CONTRACTOR'S RESPONSIBILITY TO COVER ALL EXISTING INFRASTRUCTURE TO BE REMOVED IN THEIR DEMOLITION BUDGET.
- CONTRACTOR TO CONTACT "SUNSHINE 811" FOR LOCATES TWO BUSINESS DAYS BEFORE YOU DIG, 1-800-432-4770. STATE, COUNTIES, AND CITIES ARE NOT PART OF THE ONE CALL SYSTEM, THEY MUST BE CALLED INDIVIDUALLY.

EXISTING UTILITY NOTE:

- CONTRACTOR TO CONTACT "SUNSHINE 811" FOR LOCATES TWO BUSINESS DAYS BEFORE YOU DIG, 1-800-432-4770. STATE, COUNTIES, AND CITIES ARE NOT PART OF THE ONE CALL SYSTEM, THEY MUST BE CALLED INDIVIDUALLY.
- MATCH EXISTING PAVEMENT MARKINGS AT EXISTING ROADS.
- TEMPORARY TRAFFIC CONTROL SHALL BE IN ACCORDANCE WITH THE FDOT STANDARD PLANS INDEX 102-100 THRU 102-670 (LATEST EDITION), OR THE MANUAL ON UNIFORM TRAFFIC CONTROL DEVICES (MUTCD), (LATEST EDITION).
- CONTRACTOR SHALL SET ROADWAY GROUND MOUNT SIGNS AT PROPER DEFLECTION ANGLE TO THE ROADWAY IN ACCORDANCE WITH FDOT STANDARD PLANS INDEX NUMBER 700-101.
- SEE FDOT INDEX NUMBERS 711-001 AND 706-001 FOR ADDITIONAL SIGNING AND MARKING DETAILS.
- ALL STOP SIGN LOCATIONS SHALL INCLUDE A 24"PAINTED WHITE STOP BAR. AS AN ALTERNATIVE, ROADS WITH BRICK SURFACES MAY UTILIZE CONTRASTING COLOR PAVERS IN LIEU OF PAINT.
- THE CONTRACTOR SHALL PROVIDE AND INSTALL BLUE/BLUE REFLECTIVE PAVEMENT MARKERS AT THE CENTER OF THE TRAFFIC LANE NEAREST ALL PROPOSED FIRE HYDRANTS.

SIGNING AND PAVEMENT MARKING NOTES:

- ALL SIGNING AND PAVEMENT MARKINGS SHALL BE INSTALLED IN ACCORDANCE WITH FDOT STANDARD PLANS (LATEST EDITION), THE MANUAL ON UNIFORM TRAFFIC CONTROL DEVICES (MUTCD), (LATEST EDITION) AND THE CURRENT LEE COUNTY DEPARTMENT OF TRANSPORTATION REQUIREMENTS.
- MATCH EXISTING PAVEMENT MARKINGS AT EXISTING ROADS.
- TEMPORARY TRAFFIC CONTROL SHALL BE IN ACCORDANCE WITH THE FDOT STANDARD PLANS INDEX 102-100 THRU 102-670 (LATEST EDITION), OR THE MANUAL ON UNIFORM TRAFFIC CONTROL DEVICES (MUTCD), (LATEST EDITION).
- CONTRACTOR SHALL SET ROADWAY GROUND MOUNT SIGNS AT PROPER DEFLECTION ANGLE TO THE ROADWAY IN ACCORDANCE WITH FDOT STANDARD PLANS INDEX NUMBER 700-101.
- SEE FDOT INDEX NUMBERS 711-001 AND 706-001 FOR ADDITIONAL SIGNING AND MARKING DETAILS.
- ALL STOP SIGN LOCATIONS SHALL INCLUDE A 24"PAINTED WHITE STOP BAR. AS AN ALTERNATIVE, ROADS WITH BRICK SURFACES MAY UTILIZE CONTRASTING COLOR PAVERS IN LIEU OF PAINT.
- THE CONTRACTOR SHALL PROVIDE AND INSTALL BLUE/BLUE REFLECTIVE PAVEMENT MARKERS AT THE CENTER OF THE TRAFFIC LANE NEAREST ALL PROPOSED FIRE HYDRANTS.

LEE COUNTY UTILITIES STANDARD DETAIL NOTES:

- ALL REFERENCES TO LEE COUNTY UTILITIES (LCU) STANDARD DETAILS ARE FROM THE (LATEST EDITION) LEE COUNTY UTILITIES DESIGN MANUAL. THESE STANDARD DETAILS WERE PREPARED BY OR AT THE DIRECTION OF LCU AND WERE FURNISHED TO JOHNSON ENGINEERING, INC.
- THE DESIGN STANDARDS REFERENCED WITHIN THIS PLAN SET HAVE BEEN INCORPORATED HEREIN VERBATIM AS SET FORTH WITHIN THE ABOVE REFERENCED LCU OPERATION AND MAINTENANCE MANUAL.

LEE COUNTY UTILITIES STANDARD PLAN NOTES:

- ALL WORK SHALL CONFORM TO LATEST REVISION OF THE LCU DESIGN MANUAL WHICH IS AVAILABLE ON OUR WEB-PAGE VIA THE FOLLOWING LINK: [HTTPS://WWW.LEE.GOV.COM/UTILITIES/DESIGN-MANUAL](https://www.lee.gov.com/utilities/design-manual)
- THE CONTRACTOR SHALL COMPLY WITH ALL REGULATORY AND PERMITTING AGENCIES' REQUIREMENTS.
- ANY QUANTITIES SHOWN ON PLANS ARE NOT VERIFIED BY LCU.
- ALL CONSTRUCTION PERFORMED MUST BE DONE BY A CONTRACTOR PROPERLY LICENSED IN THE STATE OF FLORIDA.
- A PRE-CONSTRUCTION MEETING IS REQUIRED BEFORE WORK MAY BEGIN. REQUIRED ATTENDEES INCLUDE BUT ARE NOT LIMITED TO; THE ENGINEER OF RECORD OR HIS DESIGNEE, THE UNDERGROUND CONTRACTOR AND THE LCU INSPECTOR ASSIGNED TO THE PROJECT. LCU IS TO BE NOTIFIED A MINIMUM OF TWO (2) WORKING DAYS PRIOR TO THE PRE-CONSTRUCTION MEETING.
- ONE COPY OF THE LCU APPROVED/STAMPED CONSTRUCTION PLANS MUST BE MAINTAINED BY THE CONTRACTOR AT THE SITE AT ALL TIMES.
- ANY AND ALL WORK AND MATERIALS INSTALLED BY THE CONTRACTOR THAT ARE INTENDED FOR OWNERSHIP AND MAINTENANCE BY LCU, WHICH DO NOT CONFORM TO LCU SPECIFICATIONS AND WHICH DO NOT HAVE PRIOR LCU WRITTEN APPROVAL, ARE SUBJECT TO REMOVAL AND REPLACEMENT AT THE CONTRACTOR'S EXPENSE.
- ANY WORK PERFORMED ON INFRASTRUCTURE INTENDED FOR OWNERSHIP AND MAINTENANCE BY LCU WITHOUT THE KNOWLEDGE OF LCU IS SUBJECT TO RE-EXCAVATION, REMOVAL AND REPLACEMENT OF SAME TO BE DONE AT THE CONTRACTOR'S EXPENSE.
- LCU INSPECTION STAFF IS TO BE PRESENT FOR ALL HOT TAPS, PRESSURE TESTS, LIFT STATION START-UPS, AND FOR ANY OTHER NECESSARY INSPECTION. THE CONTRACTOR IS TO PROVIDE A MINIMUM OF TWO (2) WORKING DAYS' NOTICE PRIOR TO SCHEDULING ANY OF THE ABOVE WITH THE EXCEPTION OF THE LIFT STATION START-UP WHICH REQUIRES A MINIMUM OF TWO-WEEK'S NOTICE.
- THE CONTRACTOR IS TO UNCOVER ALL EXISTING LCU UTILITY INFRASTRUCTURE TO VERIFY HORIZONTAL LOCATION, VERTICAL LOCATION, PIPE DIAMETER, AND PIPE MATERIAL PRIOR TO SCHEDULING THE CONNECTION WITH LCU.
- LOCATIONS, ELEVATIONS, AND DIMENSIONS OF EXISTING UTILITIES, STRUCTURES AND OTHER FEATURES ARE SHOWN ACCORDING TO THE BEST INFORMATION AVAILABLE AT THE TIME OF PREPARATION OF THESE PLANS, BUT DO NOT PURPORT TO BE ABSOLUTELY CORRECT. LCU WILL NOT GUARANTEE ANY LOCATIONS AS SHOWN ON THESE PLANS OR THOSE OMITTED FROM THESE PLANS.
- THE CONTRACTOR SHALL PROVIDE A MINIMUM OF AT LEAST TWO (2) WORKING DAYS' NOTICE TO THE INDIVIDUAL UTILITY COMPANIES PRIOR TO CONSTRUCTION.
- THE CONTRACTOR SHALL CONTACT THE ENGINEER OF RECORD AND LCU IMMEDIATELY TO REPORT ANY CONFLICT WITH LCU UTILITIES/STRUCTURES ARISING DURING CONSTRUCTION OF ANY FACILITIES SHOWN ON THESE DRAWINGS.
- ALL FRAMES, COVERS, VALVE BOXES, METER BOXES AND MANHOLES SHALL BE ADJUSTED TO FINISHED GRADE UPON COMPLETION OF PAVING OR RELATED CONSTRUCTION. ALL VALVE PADS SHALL BE POURED IN PLACE. NO PRE-CAST VALVE PADS WILL BE ACCEPTED.
- LCU REQUIRES 30"MINIMUM OF COVER FOR ALL UNDERGROUND PIPING EXCEPT UNDER PAVEMENT, WHICH REQUIRES 36"MINIMUM COVER. IF LCU REQUIRED COVER CANNOT BE MAINTAINED, ALTERNATE METHODS OF CONSTRUCTION OR PIPE PROTECTION MUST BE APPROVED BY LCU AND THE ENGINEER, AT NO ADDITIONAL COST TO THE COUNTY. IF STATE AGENCIES REQUIRE ADDITIONAL COVER, MEETING THE REQUIREMENTS SHALL BE DONE AT NO ADDITIONAL COST TO THE COUNTY.
- LCU REQUIRES THERE TO BE A MINIMUM OF TEN (10) FEET HORIZONTAL AND 18"VERTICAL SEPARATION BETWEEN POTABLE WATER & SANITARY SEWER MAINS. LCU ALSO REQUIRES MINIMUM OF TEN (10) FEET HORIZONTAL SEPARATION BETWEEN OTHER PUBLIC AND/OR PRIVATE UTILITIES, STRUCTURE(S), BUILDING(S), WALL(S), FOUNTAIN(S), FENCE(S) AND LCU INFRASTRUCTURE UNLESS SPECIFICALLY APPROVED BY LCU.
- LCU REQUIRES THERE TO BE A MINIMUM OF FIVE (5) FEET HORIZONTAL SEPARATION AND 18"VERTICAL SEPARATION BETWEEN LCU INFRASTRUCTURE AND DRAINAGE INFRASTRUCTURE, MITERED END SECTIONS, INLETS, ETC. LCU ALSO REQUIRES MINIMUM OF FIVE (5) FEET HORIZONTAL SEPARATION BETWEEN LCU INFRASTRUCTURE AND ALL NEW LIGHT POLE FOUNDATIONS.
- THE TRUNK OF PALM TREES SHALL BE A MINIMUM OF FIVE (5) FEET AND THE TRUNK OF SHADE TREES SHALL BE A MINIMUM OF TEN (10) FEET FROM ANY EXISTING OR PROPOSED LCU OWNED AND MAINTAINED PIPE/INFRASTRUCTURE.
- AS THE WORK PROGRESSES THE CONTRACTOR SHALL PROVIDE FOR ALL CHANGES AND DEVIATIONS FROM THE LCU STAMPED/APPROVED CONSTRUCTION PLANS TO BE RECORDED. THE EXACT LOCATION OF ALL CHANGES IN VERTICAL AND HORIZONTAL ALIGNMENT SHALL BE RECORDED WITH X, Y, AND Z COORDINATES WITH RESPECT TO THE NAVD 1988 STATE PLANE FLORIDA WEST COORDINATE SYSTEM, AS WELL AS ANY OTHER RECORD INFORMATION REQUIRED BY THE LCU DESIGN MANUAL.

NOTICE TO ALL CONTRACTORS

IT'S THE LAW IN FLORIDA
2 BUSINESS DAYS BEFORE
YOU DIG
CALL SUNSHINE
1-800-432-4770

STATE, COUNTIES & CITIES
ARE "NOT" PART OF THE
ONE CALL SYSTEM.THEY
MUST BE CALLED
INDIVIDUALLY.



BID DOCUMENTS

JOHNSON ENGINEERING
— An Apex Company —
JOHNSON ENGINEERING, LLC.
2122 JOHNSON STREET
FORT MYERS, FLORIDA 33901
PHONE: (239) 334-0046
E.R. #642 & L.B. #642

WEC
We believe in engineering
WEBER ENGINEERING CORPORATION
201 WEST MARION AVE SUITE 1306
PUNTA GORDA, FLORIDA 33950
PHONE: (941) 505-1700

ATLC ENGINEERING SOLUTIONS
ATLC ENGINEERING SOLUTIONS
255 S ORANGE AVE, SUITE 1600
ORLANDO, FL 32801
PHONE: (407) 841-9080

TYLER L. SHAFER, PE
License No. 82277
FLORIDA
PROFESSIONAL ENGINEER
T.Y. L. SHAFER, PE
License No. 82277
FLORIDA
PROFESSIONAL ENGINEER

Lee County
Southwest Florida
PUNTA RASSA BOAT
RAMP IMPROVEMENTS
LEE COUNTY, FLORIDA

REVISIONS	DATE	DESCRIPTION
NO.		
DATE:	FEBRUARY 2025	
PROJECT NO.	20247063-000	
FILE NO.	09-46-23	
SCALE:	AS SHOWN	

GENERAL NOTES & ABBREVIATIONS

SHEET NUMBER

C02



AERIAL PHOTOGRAPH SOURCE: LEE COUNTY – FLIGHT YEAR 2024
\\ftms01\Drawings\2024\20247063-000\Engineering\Drawings\DO\Phase 2\247063-000-AERIAL.dwg (C03 AERIAL PHOTOGRAPH MAP) csb Feb 18, 2025 - 1:24pm

JOHNSON
ENGINEERING
— An Apex Company —
JOHNSON ENGINEERING, LLC.
2122 JOHNSON STREET
FORT MYERS, FLORIDA 33901
PHONE: (239) 334-0046
E.R. #642 & L.B. #642

WEC
WEILER ENGINEERING CORPORATION
201 WEST MARKIN AVE SUITE 1306
PUNTA GORDA, FLORIDA 33950
PHONE: (941) 505-1700

ATLC
ENGINEERING
SOLUTIONS
TLC ENGINEERING SOLUTIONS
255 S ORANGE AVE, SUITE 1600
ORLANDO, FL 32801
PHONE: (407) 841-9090

TYLER M. SHARP, PE
License No. 82277
NO. 82277
STATE OF
FLORIDA
PROFESSIONAL ENGINEER

Lee County
Southwest Florida

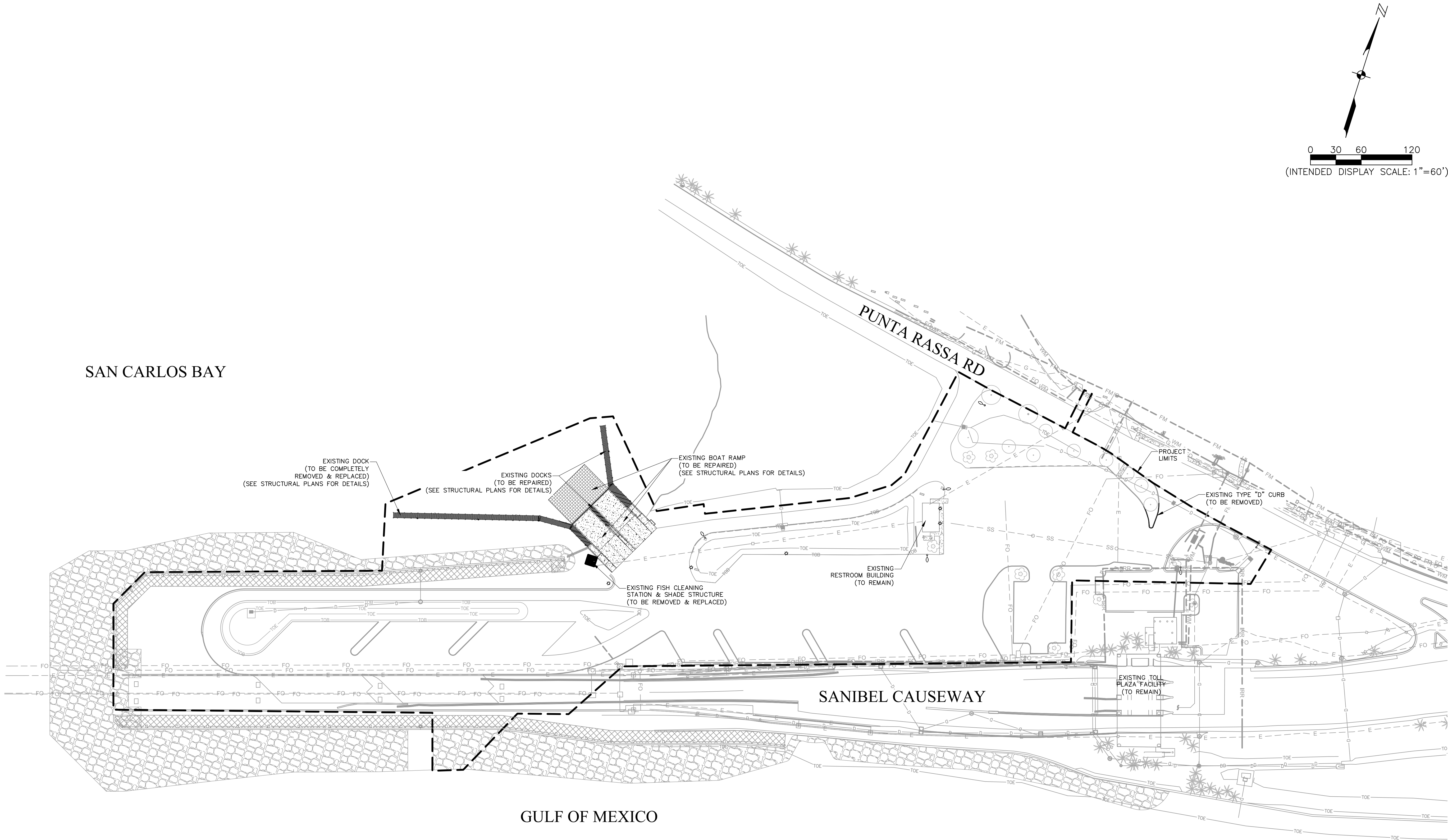
PUNTA RASSA BOAT
RAMP IMPROVEMENTS
LEE COUNTY, FLORIDA

REVISIONS		DATE			
DESCRIPTION					
NO.					
DATE:		FEBRUARY 2025			
PROJECT NO.		20247063-000			
FILE NO.		09-46-23			
SCALE:		AS SHOWN			

AERIAL
PHOTOGRAPH MAP

SHEET NUMBER
C03

BID DOCUMENTS



NOTES:

- CONTRACTOR TO COORDINATE WITH LEE COUNTY STAFF TO CONFIRM EXISTING UTILITIES USES. SERVICES TO TOLL PLAZA FACILITY & EXISTING RESTROOM BUILDINGS SHALL NOT BE INTERRUPTED THROUGHOUT CONSTRUCTION.

JOHNSON ENGINEERING
— An Apex Company —
JOHNSON ENGINEERING, LLC.
2122 JOHNSON STREET
FORT MYERS, FLORIDA 33901
PHONE: (239) 334-0046
E.R. #642 & L.B. #642

WEC
— reference in engineering —
WEILER ENGINEERING CORPORATION
201 WEST MARKIN AVE SUITE 1306
PUNTA GORDA, FLORIDA 33950
PHONE: (941) 505-1700

ATLC ENGINEERING SOLUTIONS
TLC ENGINEERING SOLUTIONS
255 S ORANGE AVE, SUITE 1600
ORLANDO, FL 32801
PHONE: (407) 841-9060

TYLER M. SHARP, PE
License No. 82277
NO. 82277
STATE OF FLORIDA
PROFESSIONAL ENGINEER

Lee County
Southwest Florida
Lee County logo with palm tree and sun.

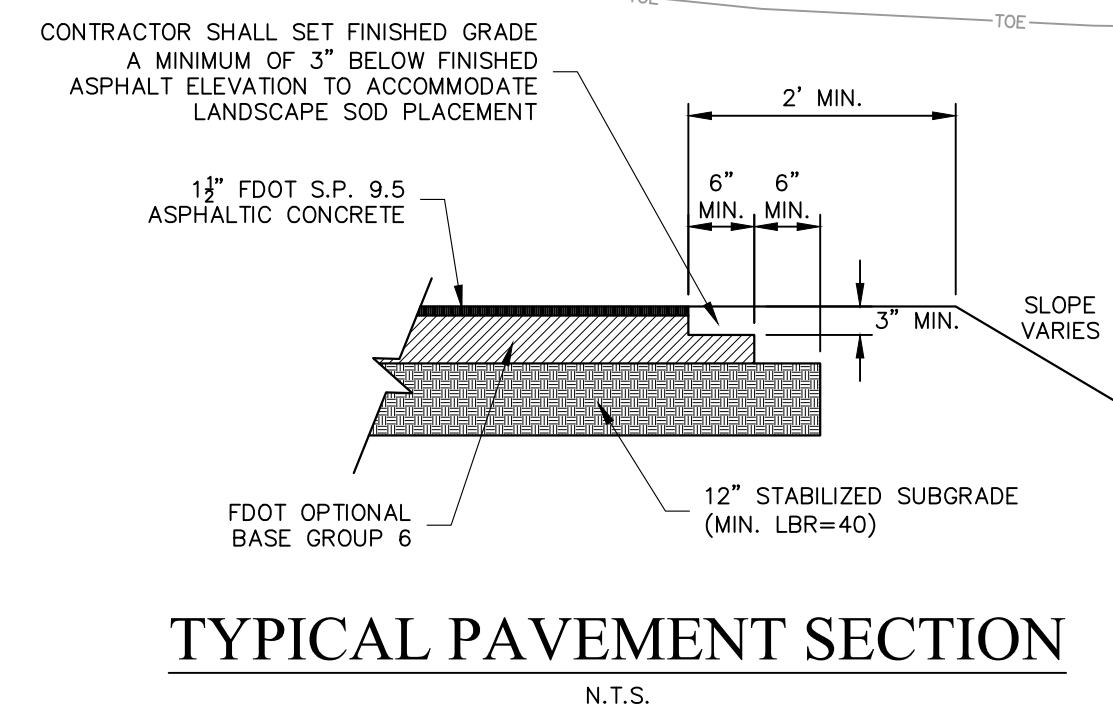
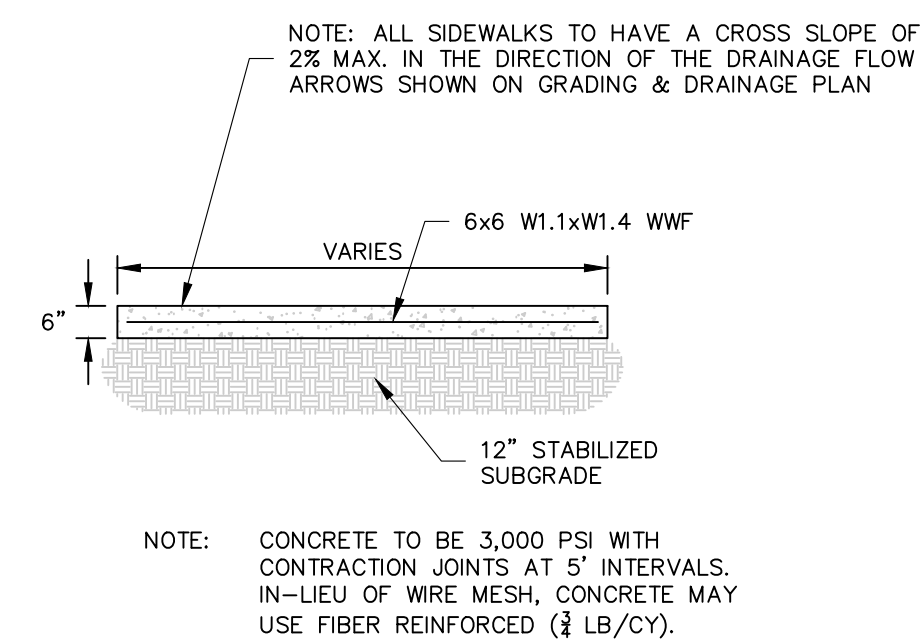
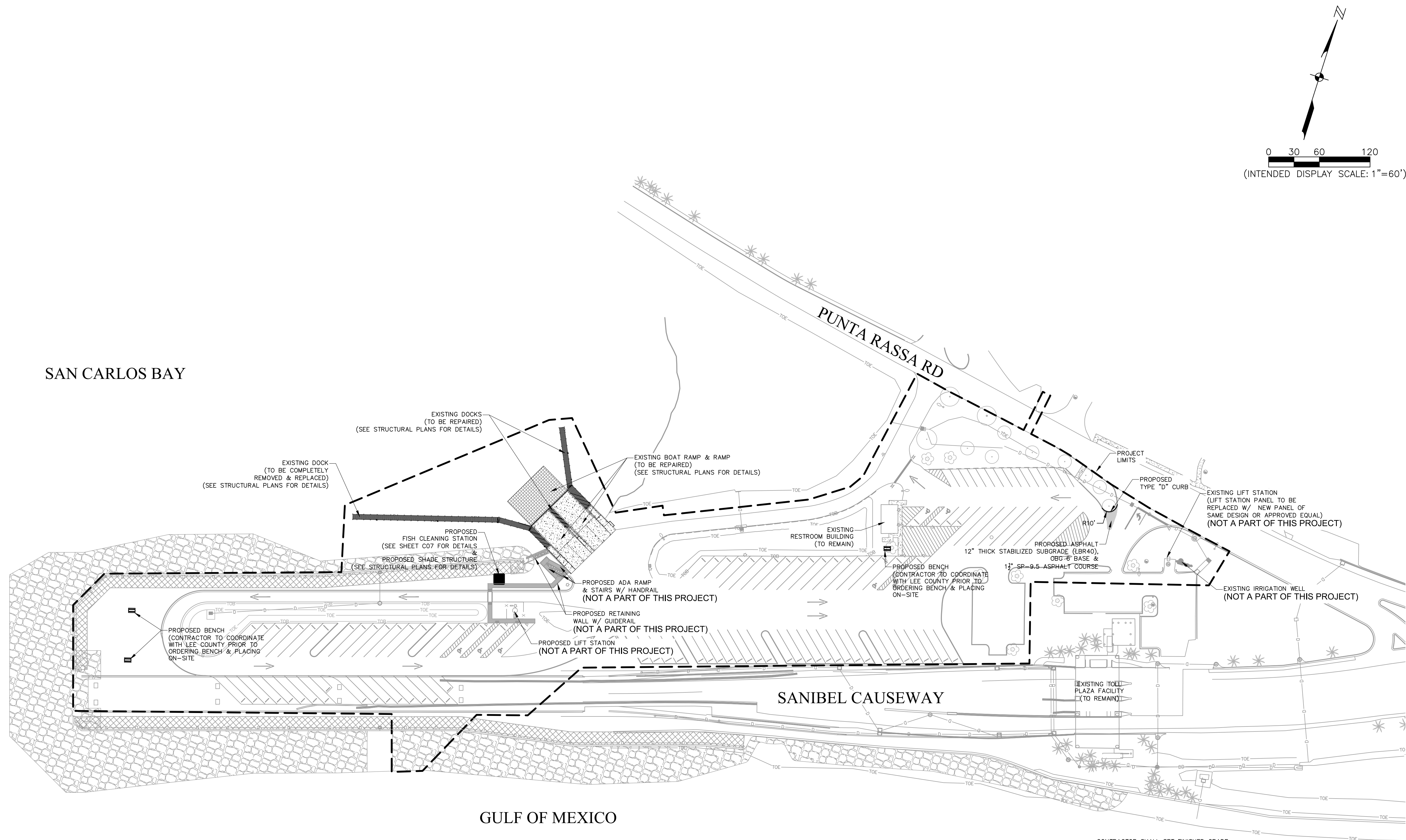
PUNTA RASSA BOAT RAMP IMPROVEMENTS
LEE COUNTY, FLORIDA

REVISIONS	DESCRIPTION	DATE
NO.		
DATE:	FEBRUARY 2025	
PROJECT NO.	20247063-000	
FILE NO.	09-46-23	
SCALE:	AS SHOWN	

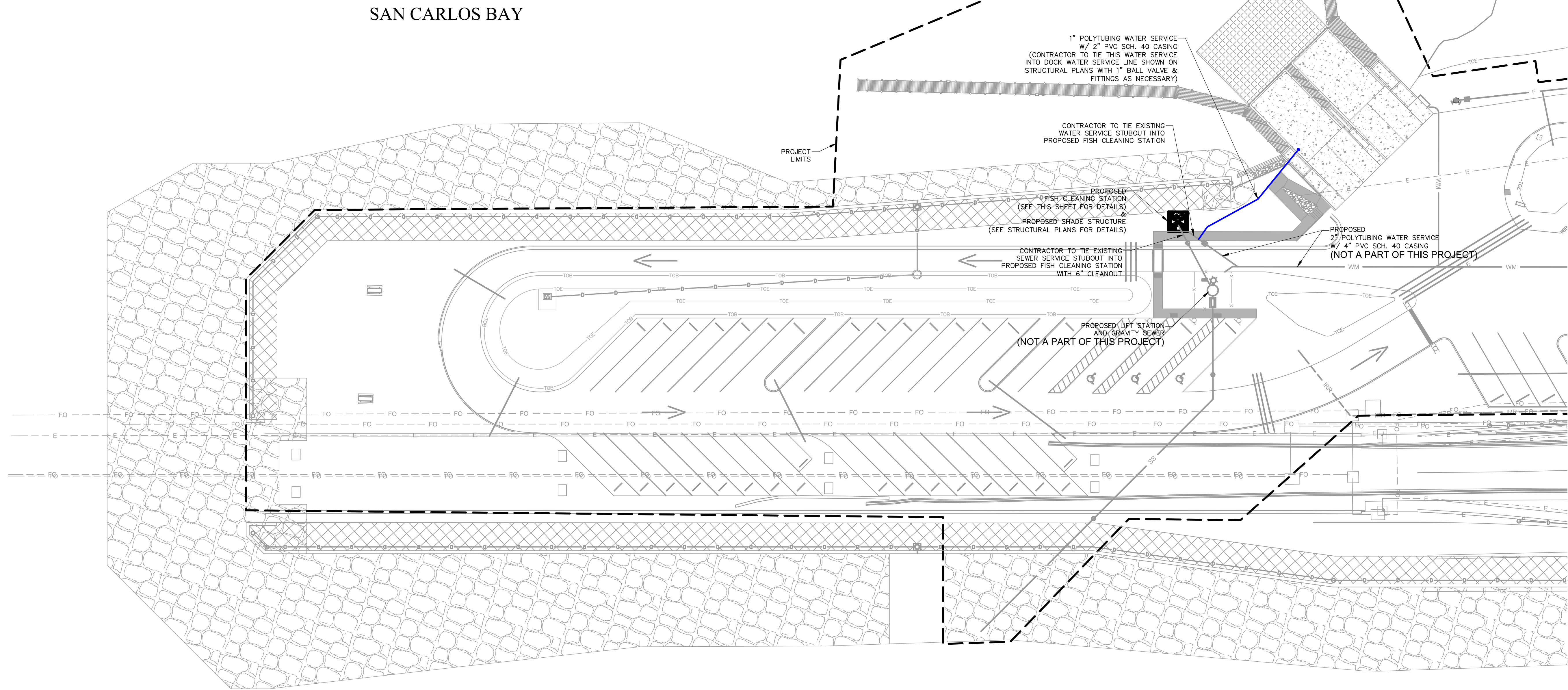
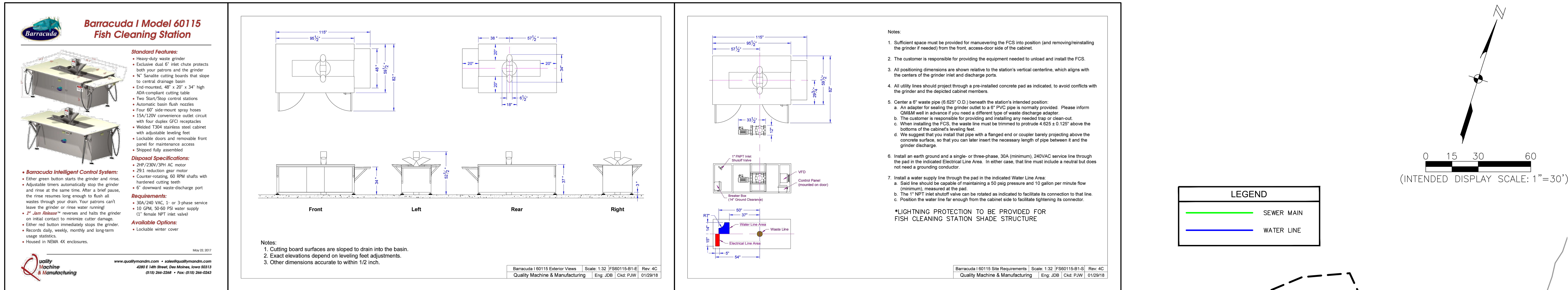
EXISTING CONDITIONS & DEMOLITION PLAN

SHEET NUMBER
C04

BID DOCUMENTS



REVISIONS		DATE
NO.	DESCRIPTION	
DATE: FEBRUARY 2025		
PROJECT NO. 20247063-000		
FILE NO.	09-46-23	
SCALE:	AS SHOWN	

[illegible]

GULF OF MEXICO

BID DOCUMENTS