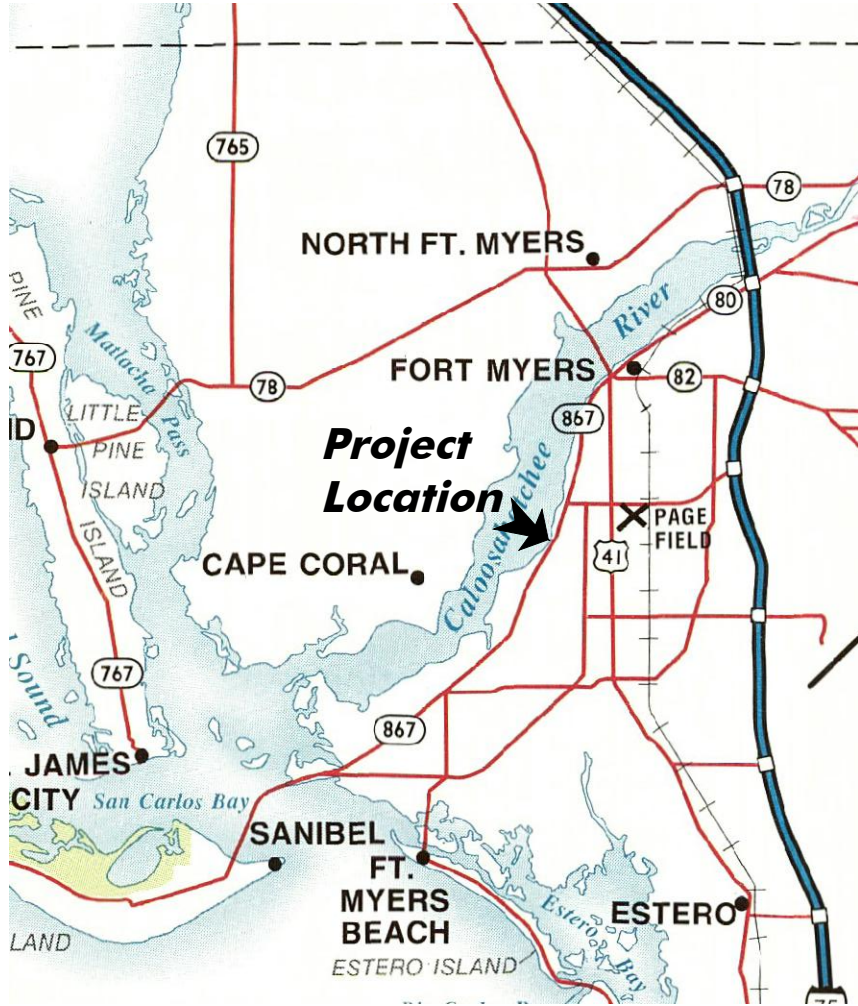


SECTION: 10
 TOWNSHIP: 45 S
 RANGE: 24 E

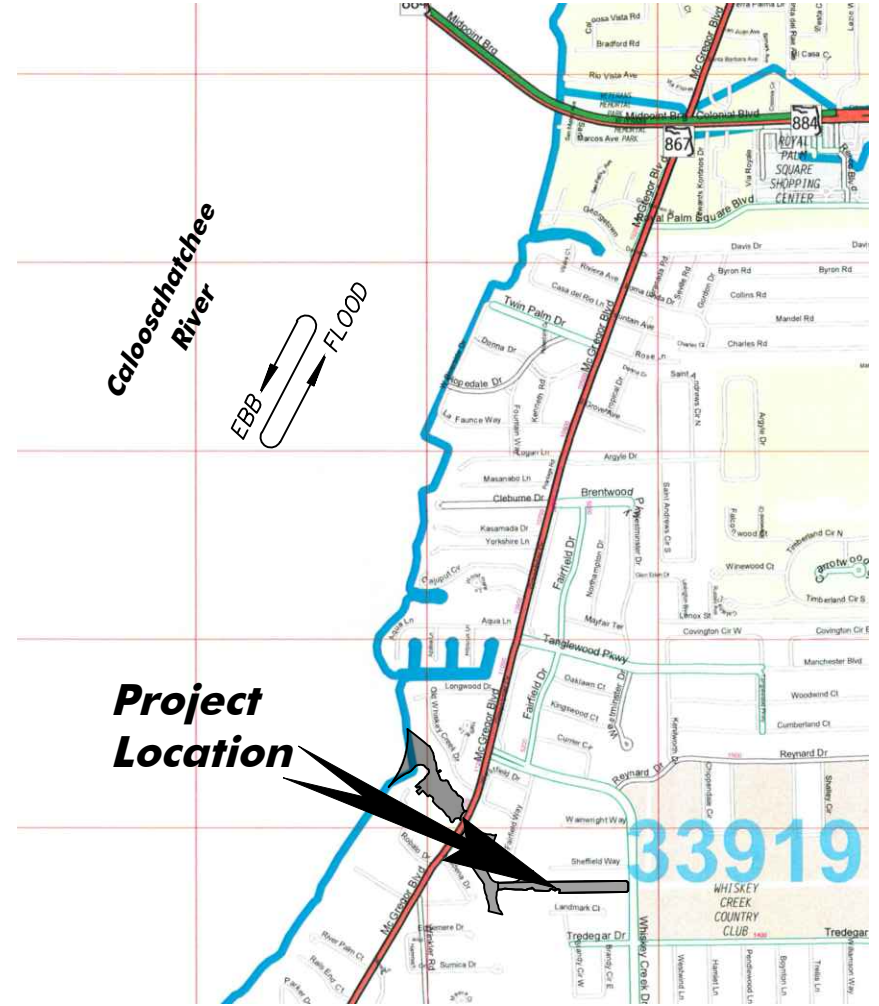
0 2.5mi 5mi
 SCALE FEET



Vicinity Map

SCALE: 1" = 5mi

0 1000 2000
 SCALE FEET



Location Map

SCALE: 1" = 2000'

BID PLANS, NOT FOR CONSTRUCTION

February 20, 2025 12:02:32 p.m.
 Drawing: LEE31MASTER.DWG



1938 Hill Avenue, Fort Myers, Florida 33901
 Office: 239-334-6870 Fax: 239-334-7810
 MARINE and ENVIRONMENTAL CONSULTANTS

2-20-25

CRY

Sheffield Canal

SHEET
1/6

SECTION: 10
 TOWNSHIP: 45 S
 RANGE: 24 E

2019 Lee County Aerial

0 150 300
 SCALE FEET



Notes: Bathymetric Survey completed by HWA, Inc on 7-24-24. Depths reference MLW per DEP MHW Request, MLW = -0.71' NAVD88.
BID PLANS, NOT FOR CONSTRUCTION

Overall Plan View

SCALE: 1" = 300'

February 20, 2025 12:02:32 p.m.
 Drawing: LEE31MASTER.DWG



1938 Hill Avenue, Fort Myers, Florida 33901
 Office: 239-334-6870 Fax: 239-334-7810
 MARINE and ENVIRONMENTAL CONSULTANTS

2-20-25

CRY

Sheffield Canal

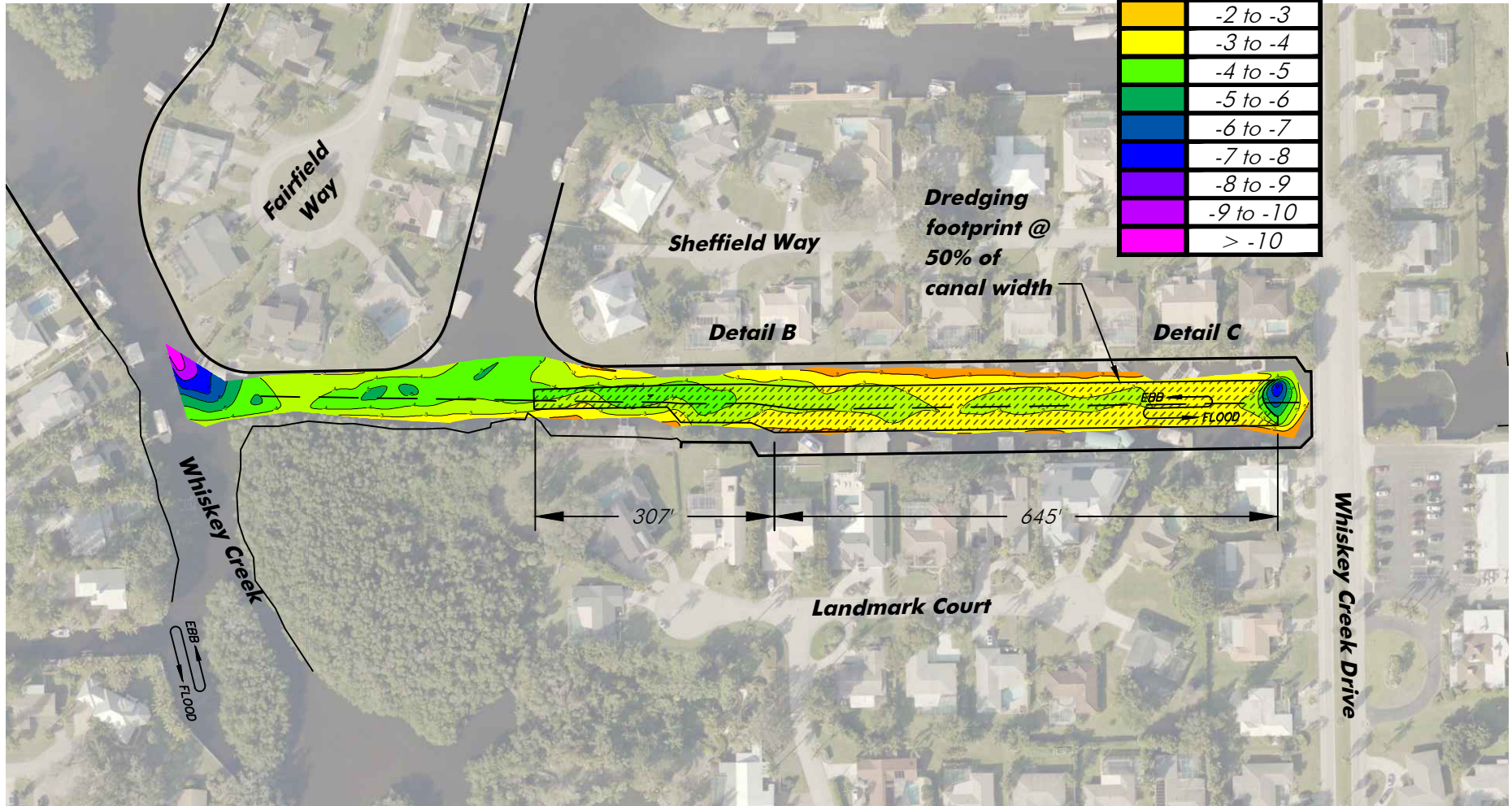
SHEET
2/6

SECTION: 10
 TOWNSHIP: 45 S
 RANGE: 24 E

2024 Lee County Aerial

Contour Legend	
	<0
	-1 to -2
	-2 to -3
	-3 to -4
	-4 to -5
	-5 to -6
	-6 to -7
	-7 to -8
	-8 to -9
	-9 to -10
	> -10

0 100 200
 SCALE FEET



Notes: Bathymetric Survey completed by HWA, Inc on 7-24-24. Depths reference MLW per DEP MHW Request, MLW = -0.71' NAVD88.
BID PLANS, NOT FOR CONSTRUCTION

Plan View

SCALE: 1" = 200'

February 20, 2025 12:02:32 p.m.
 Drawing: LEE31MASTER.DWG



1938 Hill Avenue, Fort Myers, Florida 33901
 Office: 239-334-6870 Fax: 239-334-7810
 MARINE and ENVIRONMENTAL CONSULTANTS

2-20-25

CRY

Sheffield Canal

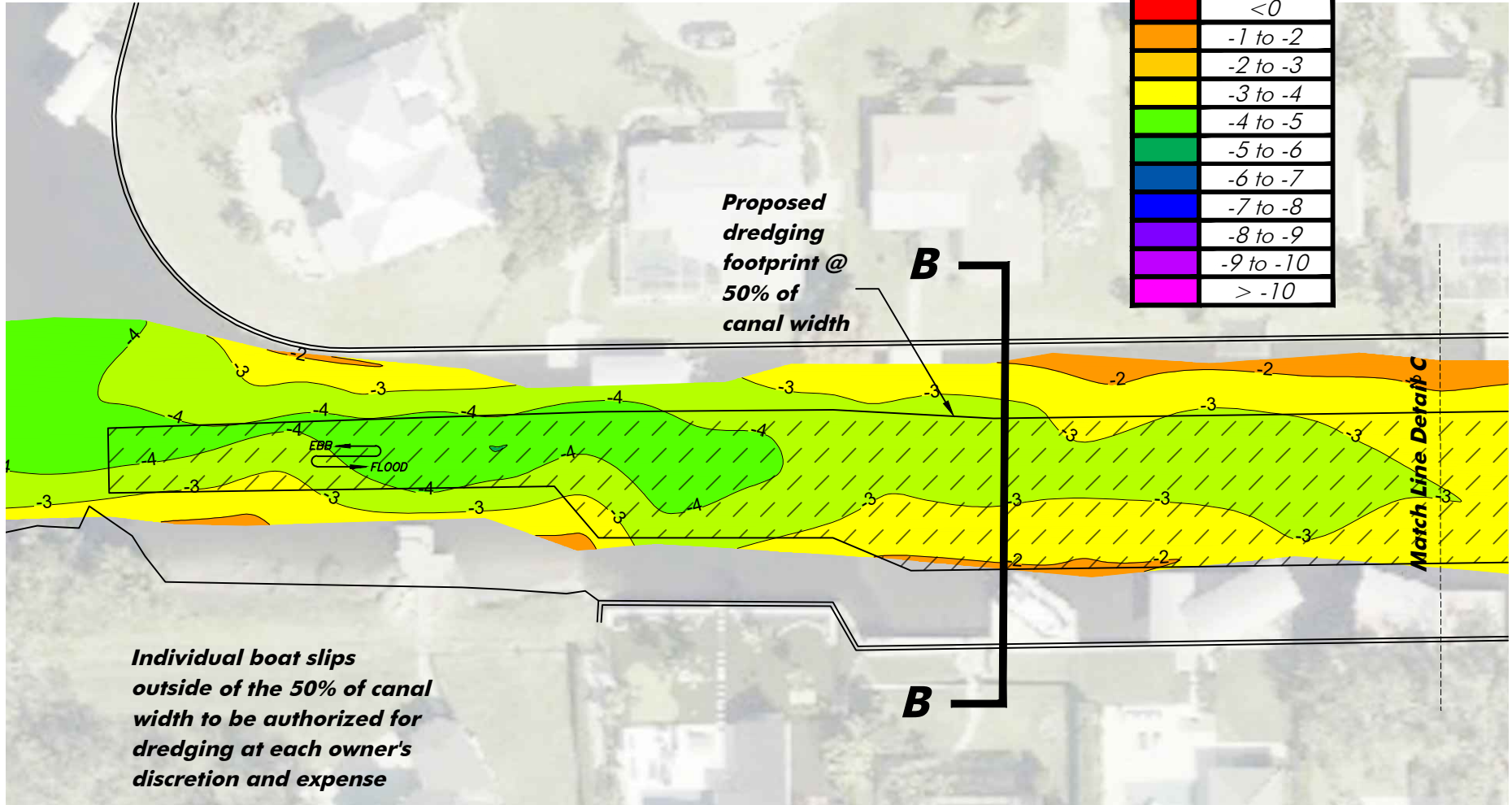
SHEET
3/6

SECTION: 10
 TOWNSHIP: 45 S
 RANGE: 24 E

2024 Lee County Aerial

0 30 60
 SCALE FEET

Contour Legend	
	<0
	-1 to -2
	-2 to -3
	-3 to -4
	-4 to -5
	-5 to -6
	-6 to -7
	-7 to -8
	-8 to -9
	-9 to -10
	> -10



Notes: Bathymetric Survey completed by HWA, Inc on 7-24-24. Depths reference MLW per DEP MHW Request, MLW = -0.71' NAVD88.
BID PLANS, NOT FOR CONSTRUCTION

Detail B

SCALE: 1" = 60'

February 20, 2025 12:02:32 p.m.
 Drawing: LEE31MASTER.DWG



1938 Hill Avenue, Fort Myers, Florida 33901
 Office: 239-334-6870 Fax: 239-334-7810
 MARINE and ENVIRONMENTAL CONSULTANTS

2-20-25

CRY

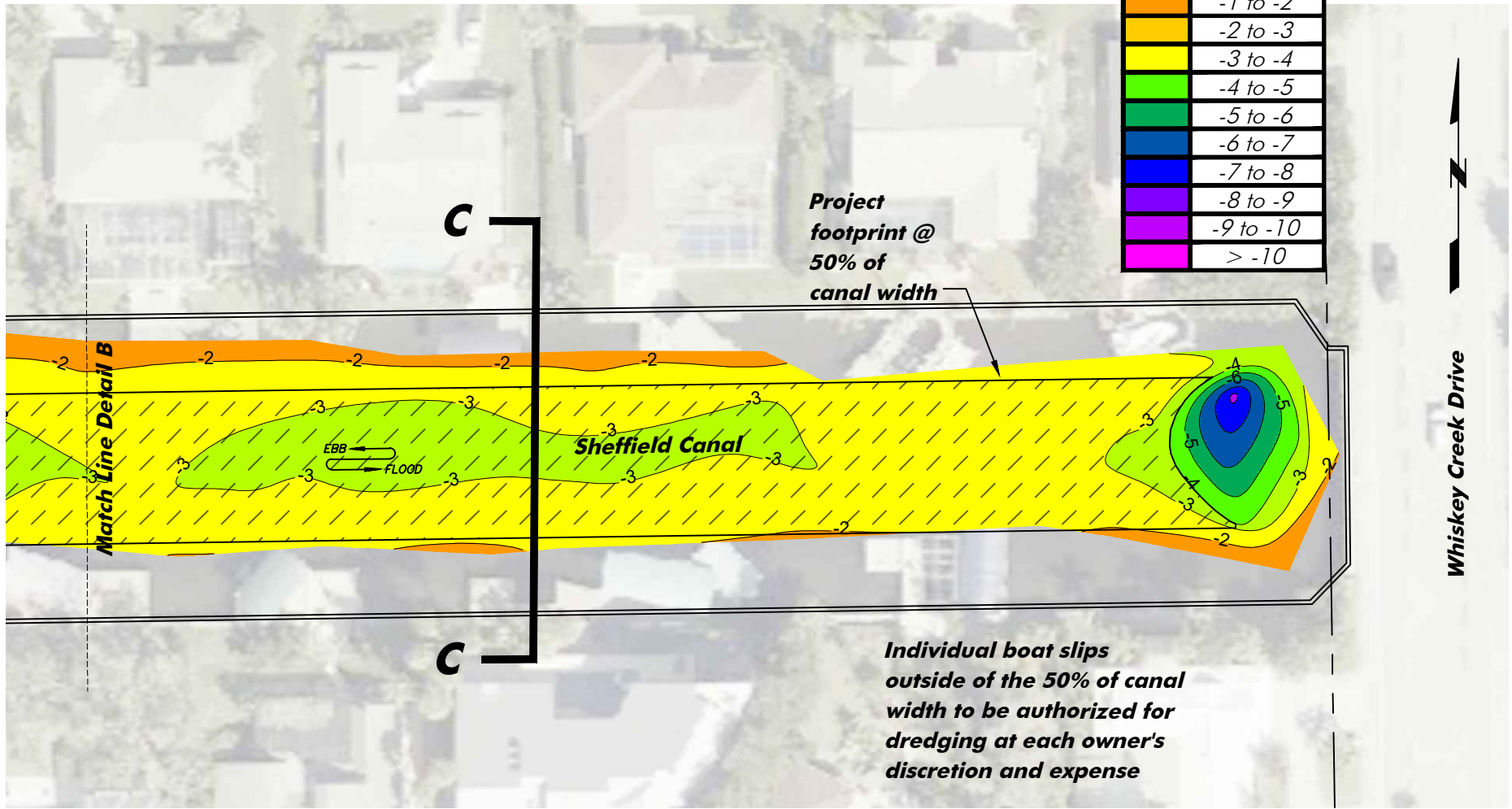
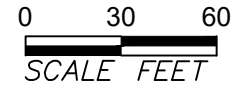
Sheffield Canal

SHEET
4/6

SECTION: 10
 TOWNSHIP: 45 S
 RANGE: 24 E

2024 Lee County Aerial

Contour Legend	
	<0
	-1 to -2
	-2 to -3
	-3 to -4
	-4 to -5
	-5 to -6
	-6 to -7
	-7 to -8
	-8 to -9
	-9 to -10
	> -10



Notes: Bathymetric Survey completed by HWA, Inc on 7-24-24. Depths reference MLW per DEP MHW Request, MLW = -0.71' NAVD88.
BID PLANS, NOT FOR CONSTRUCTION

Detail C
 SCALE: 1" = 60'

February 20, 2025 12:02:32 p.m.
 Drawing: LEE31MASTER.DWG



1938 Hill Avenue, Fort Myers, Florida 33901
 Office: 239-334-6870 Fax: 239-334-7810
 MARINE and ENVIRONMENTAL CONSULTANTS

2-20-25

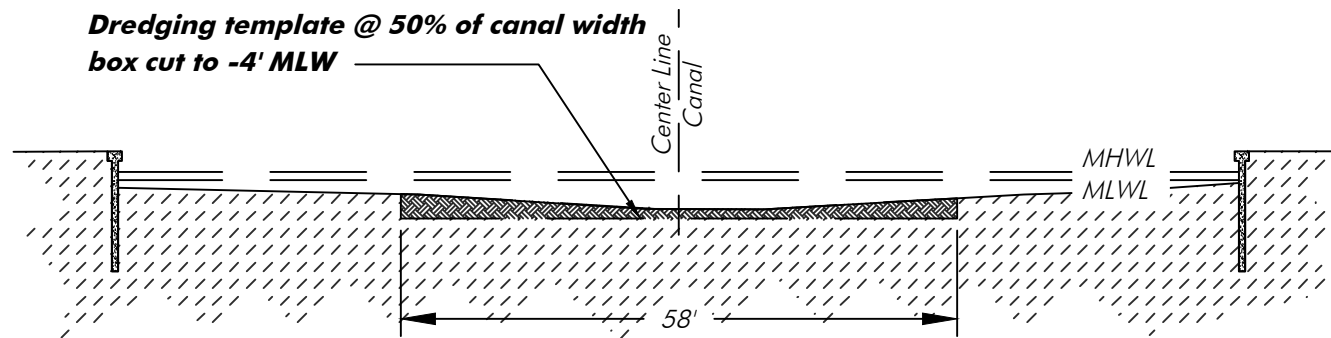
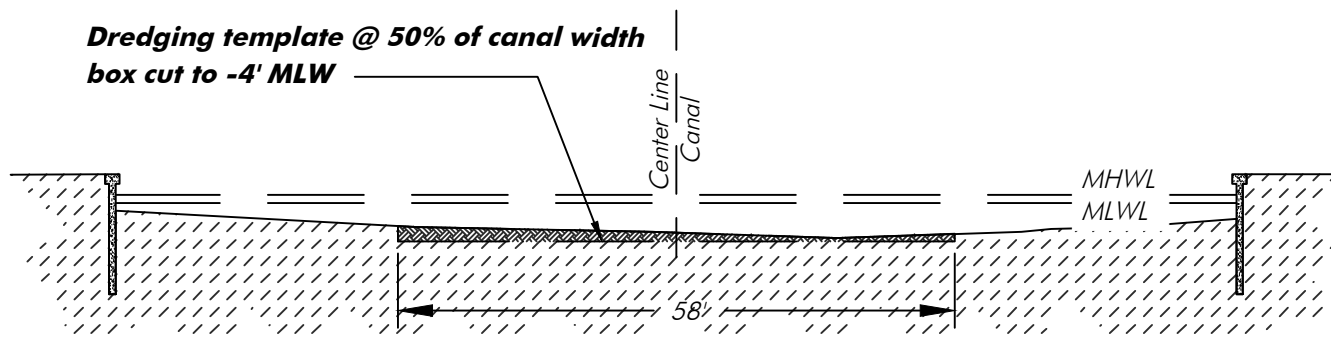
CRY

Sheffield Canal

SHEET
5/6

SECTION: 10
TOWNSHIP: 45 S
RANGE: 24 E

0 10 20
SCALE FEET



Notes: Bathymetric Survey completed by HWA, Inc on 7-24-24. Depths reference MLW per DEP MHW Request, MLW = -0.71' NAVD88.
BID PLANS, NOT FOR CONSTRUCTION

Sections

SCALE: 1" = 20'

February 20, 2025 12:02:32 p.m.
Drawing: LEE31MASTER.DWG



1938 Hill Avenue, Fort Myers, Florida 33901
Office: 239-334-6870 Fax: 239-334-7810
MARINE and ENVIRONMENTAL CONSULTANTS

2-20-25

CRY

Sheffield Canal

SHEET
6/6