



CONTRACT PLANS BRANTLEY-DOVER CANAL IMPROVEMENTS LEE COUNTY CONTRACT NO. 8876

CONTRACT PLANS COMPONENTS:

ROADWAY PLANS

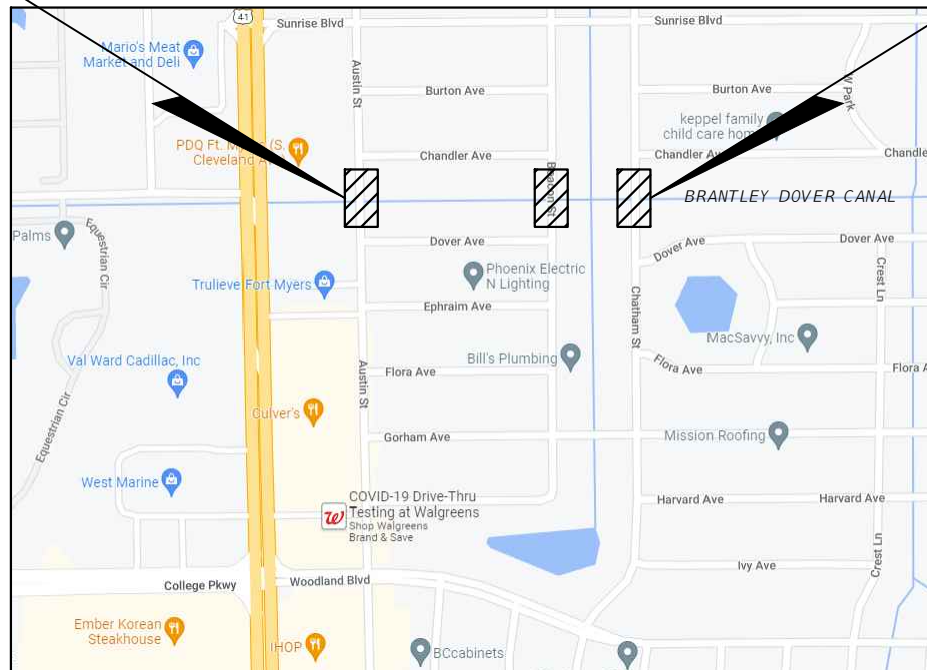
BEGIN PROJECT

END PROJECT

INDEX OF ROADWAY PLANS

SHEET NO.	SHEET DESCRIPTION
G-1	KEY SHEET
G-2	GENERAL NOTES AND SURVEY CONTROL
C-1	PROJECT LAYOUT
C-2 - C-3	DEMOLITION AND EROSION CONTROL
C-4	TYPICAL SECTIONS
C-5	PLAN AND PROFILE AUSTIN STREET
C-6	PLAN AND PROFILE BEACON STREET
C-7	PLAN AND PROFILE CHATHAM STREET
C-8 - C-9	DRAINAGE STRUCTURE SECTIONS
C-10	DETAILS

100% DESIGN PLANS
(NOT FOR CONSTRUCTION)



LEE COUNTY
BOARD OF COUNTY COMMISSIONERS

KEVIN RUANE	COMMISSIONER
CECIL L. PENDERGRASS	COMMISSIONER
RAY SANDELLI	COMMISSIONER
BRIAN HAMMAN	COMMISSIONER
MIKE GREENWELL	COMMISSIONER

PLANS PREPARED BY:



4030 W. BOY SCOUT BLVD., SUITE 700
TAMPA, FL 33607-1712
(813) 282-7275

ENGINEER OF RECORD: DANIEL B. PARSONS, P.E.
P.E. NO.: 72371

GOVERNING DESIGN STANDARDS:

Florida Department of Transportation, FY 2023-24 Standard Plans for Road and Bridge Construction and applicable Interim Revisions (IRs).

Standard Plans for Road and Bridge Construction and associated IRs are available at the following website:
<http://www.fdot.gov/design/standardplans>

GOVERNING STANDARD SPECIFICATIONS:

Florida Department of Transportation, FY 2023-24 Standard Specifications for Road and Bridge Construction and applicable IRs.

Standard Specifications for Road and Bridge Construction and associated IRs are available at the following website:
<http://www.fdot.gov/programmanagement/Implemented/SpecBooks>

LOCATION MAP
SECTION 13 TOWNSHIP 45 S RANGE 24 E

AUGUST 2023

REVISIONS		
DATE	BY	DESCRIPTION

LENGTH OF PROJECT		
DESCRIPTION	LIN. FT.	MILES
ROADWAY	600	0.11
BRIDGES	-	-
DITCH IMPROVEMENTS	-	-
NET LENGTH OF PROJECT	-	-
GROSS LENGTH OF PROJECT	600	0.11

COUNTY PROJECT MANAGER

RYAN RIORDAN

CONSTRUCTION CONTRACT NO.	FISCAL YEAR	SHT. NO.
TO BE DETERMINED	2023	G-1

NOTE: THE SCALE OF THESE PLANS MAY HAVE CHANGED DUE TO REPRODUCTION.

THE OFFICIAL RECORD OF THIS SHEET IS THE ELECTRONIC FILE DIGITALLY SIGNED AND SEALED UNDER RULE 61G15-23.004, F.A.C.

GENERAL NOTES

- LOCATION, ELEVATION, AND DIMENSIONS OF THE EXISTING UTILITIES, STRUCTURES, AND OTHER FEATURES ARE SHOWN IN ACCORDANCE WITH THE BEST INFORMATION AVAILABLE AT TIME OF THE PREPARATION OF THESE PLANS BUT DO NOT PURPORT TO BE ABSOLUTELY CORRECT. THE INFORMATION PROVIDED IN THESE PLANS IS SOLELY TO ASSIST THE CONTRACTOR IN ASSESSING THE CONDITIONS OF THE PROJECT AREA THAT MAY BE ENCOUNTERED DURING THE COURSE OF CONSTRUCTION. ALL CONTRACTORS ARE DIRECTED, PRIOR TO BIDDING, TO CONDUCT WHATEVER INVESTIGATIONS THEY DEEM NECESSARY TO ARRIVE AT THEIR OWN CONCLUSIONS REGARDING ACTUAL CONDITIONS THAT WILL BE ENCOUNTERED.
- THE CONTRACTOR SHALL VERIFY THE LOCATION, ELEVATION, AND DIMENSIONS OF ALL EXISTING UTILITIES, STRUCTURES, AND OTHER FEATURES AFFECTING HIS WORK AND SHALL COMPLY WITH ALL STATE, COUNTY, AND LOCAL ORDINANCES AND OBTAIN ANY NECESSARY WORK PERMITS THAT MAY BE REQUIRED PRIOR TO CONSTRUCTION.
- UTILITIES, BOTH LISTED AND NOT LISTED ON THESE PLANS, ARE TO BE ADJUSTED BY UTILITY OWNERS. CONTRACTOR IS RESPONSIBLE FOR ALL UTILITIES COORDINATION: THIS INCLUDES, BUT IS NOT LIMITED TO, PRE-CONSTRUCTION CONFERENCES, UTILITY INVESTIGATION, AND SCHEDULING OF UTILITY PROTECTIONS AND RELOCATIONS WITH UTILITY OWNERS PRIOR TO THE BEGINNING OF CONSTRUCTION.
- THE CONTRACTOR SHALL PROVIDE AT LEAST 48 HOURS NOTICE TO THE VARIOUS UTILITY COMPANIES IN ORDER TO PERMIT THE RELOCATION OF THE EXISTING UNDERGROUND UTILITIES IN ADVANCE OF CONSTRUCTION. CONTACT SUNSHINE 811 AT 1-800-432-4770.
- THE CONTRACTOR SHALL COMPLY WITH THE PROVISIONS OF THE LEE COUNTY LAND DEVELOPMENT CODE REGARDING TREE REMOVAL, SITE CLEARING AND LAND ALTERATION REGULATIONS.
- POSSIBLE TREE TRIMMING AND REMOVAL MAY BE REQUIRED TO PROVIDE ADEQUATE SIGHT DISTANCE, OR AS ORDERED BY THE ENGINEER. ALL EXPENSES INCURRED FOR THIS WORK WILL BE INCLUDED IN THE PRICE BID FOR CLEARING AND GRUBBING.
- ALL STREET SIGNS AND STREET/OBJECT MARKERS REMOVED BY CONTRACTOR DURING CONSTRUCTION TO BE REPLACED IN-KIND AT COMPLETION OF CONSTRUCTION (TO BE PAID UNDER PAY ITEM NO. 700-1-50). EXIST. SPEED BUMP AT THE BRANTLEY DOVER CANAL/BEACON STREET CROSSING TO BE RECONSTRUCTED IN-KIND AFTER COMPLETION OF ROADWAY RECONSTRUCTION (TO BE PAID UNDER PAY ITEM NO. 334-1-13).
- UNLESS OTHERWISE SPECIFIED IN THE CONTRACT DOCUMENTS AND SPECIFICATIONS, ANY AND ALL MATERIAL TO BE REMOVED SUCH AS CULVERT PIPE, GUARDRAIL, ROAD SIGNS, ETC. THAT THE ENGINEER DEEMS SALVAGEABLE SHALL BE NEATLY STOCKPILED IN AN AREA DESIGNATED BY THE ENGINEER, FOR FUTURE REMOVAL BY COUNTY FORCES. ALL OTHER EXCESS/UNSAVAGEABLE MATERIALS ARE TO BE REMOVED FROM THE CONSTRUCTION SITE AND PROPERLY DISPOSED OF BY THE CONTRACTOR.
- UNLESS OTHERWISE SPECIFIED IN THE CONTRACT DOCUMENTS AND SPECIFICATIONS, THE CONTRACTOR SHALL PROVIDE SUITABLE BORROW MATERIAL, APPROVED BY THE ENGINEER, AND INSTALL SAID MATERIAL IN ACCORDANCE WITH THE PLANS AND SPECIFICATIONS.
- THE CONTRACTOR SHALL BE RESPONSIBLE FOR THE COMPLETE STAKEOUT OF THE PROJECT, ELECTR./CABLE/TEL., LINE, GRADE, SLOPE STAKING, MAINTENANCE OF STAKING, AND ANY RESTAKING THAT MAY BE REQUIRED TO COMPLETE THE PROJECT IN ACCORDANCE WITH THE PLANS AND SPECIFICATIONS. ANY AND ALL EXPENSES INCURRED FOR THIS WORK SHALL BE INCLUDED IN THE UNIT PRICE BID FOR APPLICABLE ITEMS. NO ADDITIONAL PAYMENT SHALL BE MADE FOR THIS WORK.
- OVERALL CLEAN UP SHALL BE ACCOMPLISHED BY THE CONTRACTOR IN ACCORDANCE WITH COUNTY STANDARDS OR AS DIRECTED BY THE ENGINEER. ANY AND ALL EXPENSES INCURRED FOR THIS WORK SHALL BE INCLUDED IN THE UNIT PRICE BID FOR THE APPLICABLE LINE ITEMS.
- THE CONTRACTOR SHALL ENDEAVOR TO PROTECT PRIVATE PROPERTY. ANY DAMAGE CAUSED BY THE CONTRACTOR IN THE PERFORMANCE OF HIS WORK SHALL BE CORRECTED TO THE SATISFACTION OF THE ENGINEER AT THE CONTRACTOR'S EXPENSE. PAYMENT SHALL NOT BE MADE FOR THIS WORK.
- ANY DAMAGE TO STATE, COUNTY, OR LOCAL ROADS CAUSED BY THE CONTRACTOR'S HAULING OR EXCAVATION EQUIPMENT SHALL BE REPAIRED BY THE CONTRACTOR TO THE SATISFACTION OF THE COUNTY PROJECT ENGINEER. PAYMENT SHALL NOT BE MADE FOR THIS WORK.
- SIDEWALK REPLACEMENT LIMITS SHALL EXTEND TO THE NEAREST CONSTRUCTION JOINT TO PREVENT SMALL SECTIONS OF EXISTING PANELS FROM BEING LEFT IN PLACE.

- ANY U.S.C. AND G.S. MONUMENT WITHIN LIMITS OF CONSTRUCTION IS TO BE PROTECTED. IF IN DANGER OF DAMAGE, THE CONTRACTOR SHOULD NOTIFY NATIONAL GEODETIC SURVEY CENTER AT 1315 EAST-WEST HIGHWAY, SILVER SPRING, MARYLAND 20910-3282, (301) 713-3242.
- THE CONTRACTOR(S) PERFORMING TRENCH EXCAVATION ON THIS CONTRACT, SHALL COMPLY WITH THE OCCUPATIONAL SAFETY AND HEALTH ADMINISTRATION'S (OSHA) TRENCH EXCAVATION SAFETY STANDARDS, 29 C.F.R., S.1926.650, SUBPART P, INCLUDING ALL SUBSEQUENT REVISIONS OR UPDATES TO THE STANDARDS AS ADOPTED BY THE DEPARTMENT OF LABOR AND EMPLOYMENT SECURITY (DLES).
- UNLESS OTHERWISE SPECIFIED IN THE PLANS, EXISTING SOD, DISTURBED BY CONSTRUCTION, SHALL BE REPLACED PER THE LEE COUNTY LAND DEVELOPMENT CODE.
- MATERIALS AND CONSTRUCTION TO BE IN ACCORDANCE WITH THE FDOT STANDARD SPECIFICATIONS FOR ROAD AND BRIDGE CONSTRUCTION (FY 2023-24).
- FIELD MEASURED BEARINGS AND COORDINATES AS SHOWN HEREON ARE REFERENCED TO THE FLORIDA STATE PLANE COORDINATE SYSTEM, FLORIDA WEST ZONE, NORTH AMERICAN DATUM 1983, 2011 ADJUSTMENT (NAD83, 2011).
- ELEVATIONS SHOWN ON THE PLANS REFERENCE NAVD 1988 DATUM.
- ALL SEDIMENT BARRIER CALLED OUT WITHIN THESE PLANS IS TO BE STAKED TYPE III SILT FENCE.
- THE CONTRACTOR SHALL BE RESPONSIBLE FOR THE MAINTENANCE OF THE EXISTING DRAINAGE SYSTEM WITHIN THE LIMITS OF THE PROJECT AREA, FOR THE DURATION OF THE PROJECT. NO ADDITIONAL PAYMENT WILL BE MADE FOR THE WORK INVOLVED.
- THE CONTRACTOR IS TO MARK IN WHITE THE AREAS OF EXCAVATION PRIOR TO CALLING "SUNSHINE 811".
- THE CONTRACTOR IS TO CONTACT LEE COUNTY PUBLIC UTILITIES (SEE UTILITY CONTACTS TABLE, THIS SHEET), NO LESS THAN 48 HOURS PRIOR TO THE START OF CONSTRUCTION FOR COORDINATION AND PREPAREDNESS IN THE EVENT FACILITIES ARE DAMAGED BY THE CONSTRUCTION.
- THE CONTRACTOR IS TO "PROTECT IN PLACE" THE FACILITIES THAT ARE NOT TO BE RELOCATED AND/OR REMOVED, BUT ARE TO REMAIN IN PLACE.
- THE CONTRACTOR MUST VERIFY THE LOCATION OF ALL COUNTY FACILITIES PRIOR TO CONSTRUCTION.
- THE CONTRACTOR SHALL PROVIDE DETAILED RECORD DRAWINGS FOR ALL DRAINAGE RELATED ITEMS.
- ALL EXISTING DRAINAGE STRUCTURES ARE TO REMAIN UNLESS OTHERWISE NOTED.
- ALL DRAINAGE PIPE SHALL BE RCP CONCRETE CLASS III.
- ROADWAY STRIPING TO BE REPLACED IN-KIND IMMEDIATELY FOLLOWING ROADWAY RESTORATION. ROADWAY STRIPING TO BE PAID UNDER PAY ITEM NO. 710-90.

GEOTECHNICAL BORINGS TABLE			
POINT #	NORTHING	EASTING	DESCRIPTION
B-1	809598.0000	698440.0000	STANDARD BORING
B-2	809537.0000	698556.0000	STANDARD BORING
B-3	809601.0000	699254.0000	STANDARD BORING
B-4	809559.0000	699340.0000	STANDARD BORING
B-5	809568.0000	699606.0000	STANDARD BORING
B-6	809546.0000	699681.0000	STANDARD BORING
C-1	809586.0000	698480.0000	PAVEMENT CORE
C-2	809605.0000	699300.0000	PAVEMENT CORE
C-3	809618.0000	699631.0000	PAVEMENT CORE

SURVEY CONTROL POINTS				
POINT #	NORTHING	EASTING	ELEVATION	DESCRIPTION
101	809563.5680	698500.6710	9.27	SET MAG N&D "ATKINS TRAV.PT."
102	809553.7050	699283.7390	9.62	SET MAG N&D "ATKINS TRAV.PT."
103	809568.0450	699648.1250	9.86	SET MAG N&D "ATKINS TRAV.PT."
204	809706.6570	699614.7280	8.74	FND 1/2" IR NO ID
205	809622.3310	699665.5220	8.46	FND 5/8" IR NO ID
208	809619.3330	699265.2090	8.85	FND 1/2" IRC "PLS4839"
209	809619.3100	699315.5980	8.13	FND 5/8" IR NO ID
213	809531.0020	698517.6550	7.75	FND 3/4" IP NO ID

EROSION CONTROL NOTES

- THE CONTRACTOR SHALL INSTALL AND MAINTAIN EROSION CONTROL BARRIERS AS DICTATED BY ACTUAL SITE CONDITIONS AND AS DIRECTED BY THE COUNTY'S ENGINEER. THEIR LOCATIONS WILL BE ADJUSTED TO REFLECT PROJECT PHASING REQUIREMENTS, AND THEY WILL BE REMOVED WHEN NO LONGER REQUIRED. THE MAINTENANCE AND SUBSEQUENT REMOVAL OF EROSION CONTROL DEVICES ARE TO BE INCLUDED IN THEIR INDIVIDUAL UNIT BID PRICE. IF AREA DISTURBED IN PROJECT EXCEEDS (1) ACRE, CONTRACTOR SHALL FILL OUT AND SUBMIT A LEE COUNTY EROSION AND SEDIMENT CONTROL CHECKLIST TO COMPLY WITH NPDES PERMIT REQUIREMENTS.
- THE CONTRACTOR SHALL PROVIDE FOR ADEQUATE EROSION AND SEDIMENT CONTROL THROUGHOUT THE CONSTRUCTION PERIOD. INCLUDED PLANS HAVE BEEN PROVIDED AS A BASIS OF ESTIMATE FOR MATERIALS AND AS AN EXAMPLE ONLY. IT IS SOLELY THE CONTRACTOR'S RESPONSIBILITY TO DEVELOP THEIR OWN SITE SPECIFIC PLAN. THE CONTRACTOR IS RESPONSIBLE FOR MAINTAINING AND/OR MODIFYING THE EROSION AND SEDIMENT CONTROL MEASURES DURING CONSTRUCTION AS NECESSARY TO MEET FEDERAL, STATE, AND LOCAL WATER QUALITY STANDARDS. ALL EROSION CONTROL MEASURES SHALL BE IN ACCORDANCE WITH THE 'STATE OF FLORIDA EROSION AND SEDIMENT CONTROL DESIGNER AND REVIEWER MANUAL, LATEST VERSION (2023)' OR FDOT STANDARD PLANS INDEX FY 2023-24.
- EROSION CONTROLS SHALL BE INSTALLED PRIOR TO ANY LAND ALTERATION, MAINTAINED DURING CONSTRUCTION AND REMOVED FOLLOWING SOIL STABILIZATION AND FINAL COMPLETION. CONTRACTOR IS TO PROVIDE EROSION/SEDIMENT CONTROL TO PREVENT SILTATION OF ADJACENT PROPERTY, STREETS, STORM SEWERS, AND WATERWAYS.
- CONTRACTOR SHALL INSPECT ALL EROSION AND SEDIMENT CONTROL ELEMENTS THROUGHOUT THE PROJECT WORK AREA ON A DAILY BASIS OR AFTER A RAINFALL EVENT OF 0.5 INCH OR GREATER AND MAKE ALL NECESSARY REPAIRS AND/OR MODIFICATIONS AS NECESSARY TO MAINTAIN THEIR INTENDED FUNCTION. IF IN THE OPINION OF THE OWNER AND/OR LOCAL AUTHORITIES, EXCESSIVE QUANTITIES OF EARTH ARE TRANSPORTED OFF-SITE EITHER BY NATURAL DRAINAGE OR VEHICULAR TRAFFIC, THE CONTRACTOR IS TO REMOVE AND CLEAN SAID SURFACE TO THE SATISFACTION OF THE OWNER/AGENT OR AUTHORITIES.
- ALL EROSION PREVENTION AND CONTROL MEASURES MUST BE INSPECTED AND APPROVED BY THE COUNTY COMPLIANCE PERSONNEL AS REQUIRED, PRIOR TO ANY CONSTRUCTION ACTIVITIES. REMOVAL OF THESE SAME EROSION CONTROLS AND PREVENTION MEASURES MAY BE DONE ONLY AFTER AUTHORIZATION BY COUNTY PERSONNEL IS OBTAINED.
- ALL SURFACE WATER DISCHARGE FROM SITE, INCLUDING DEWATERING DISCHARGE, SHALL MEET CURRENT STATE WATER QUALITY STANDARDS, PER F.A.C. 62-302.530, PRIOR TO REACHING ANY WATERS OF THE STATE INCLUDING WETLANDS.
- DAMAGE TO WETLANDS AND/OR UPLAND BUFFERS ADJACENT TO CONSTRUCTION AREAS SHALL BE PREVENTED BY DELINEATING THE LIMITS OF CONSTRUCTION, AND INSTALLING SEDIMENT BARRIERS PRIOR TO THE COMMENCEMENT OF CONSTRUCTION ACTIVITIES, THEREBY RETAINING SEDIMENT WITHIN THE CONSTRUCTION AREA. CONTRACTOR WILL BE REQUIRED TO ADEQUATELY MAINTAIN THESE PROTECTION MEASURES AT ALL TIMES.
- EROSION CONTROL AND DUST CONTROL SHALL BE MAINTAINED WITHIN CONSTRUCTION AREAS BY QUICKLY STABILIZING DISTURBED AREAS TO PREVENT THE RELEASE OF SEDIMENT. THIS SHALL BE ACCOMPLISHED USING GRASS COVER, TURBIDITY FENCES, PERIODIC WATERING, AND OTHER BEST MANAGEMENT PRACTICES WHICH ARE ACCEPTABLE TO THE LEE COUNTY ENGINEERING INSPECTOR AND REGULATORY AGENCIES.
- NO DISCHARGE OF CONTAMINANTS INTO ADJACENT WETLANDS, WATER BODIES, OR UPLAND BUFFERS WILL BE PERMITTED AT ANY TIME.
- CONTRACTOR IS RESPONSIBLE FOR THE TURBIDITY NTU MONITORING PER THE PERMIT REQUIREMENTS, WITH ANY MONITORING RELATED COSTS INCLUDED IN THE PAY ITEM OR EROSION AND TURBIDITY CONTROL DEVICES. TURBIDITY SHALL NOT EXCEED 29 NTUS ABOVE BACKGROUND.
- AS NECESSARY FOR THE INSTALLATION OF THE PROPOSED CONSTRUCTION, THE CONTRACTOR SHALL BE RESPONSIBLE FOR DEVELOPING A PHASED DEWATERING AND FLOW DIVERSION PLAN TO MINIMIZE OFF-SITE DISCHARGE OF SURFACE AND GROUNDWATER, IN ACCORDANCE WITH PERMITS AND APPLICABLE REGULATIONS. DETAILS OF THE DEWATERING OPERATIONS SHALL BE SUBMITTED IN WRITING TO THE COUNTY OR AUTHORIZED REPRESENTATIVE ON A WEEKLY BASIS. THE DEWATERING OPERATION SHALL BE IN COMPLIANCE WITH CHAPTERS 62-331.231 AND 62.621.300 OF THE F.A.C. THE DEWATERING PLAN SHALL BE SUBMITTED TO THE OWNER FOR REVIEW AT THE PRE-CONSTRUCTION CONFERENCE. THE CONTRACTOR IS RESPONSIBLE FOR OBTAINING THE DEWATERING PERMIT.
- DEWATERING WITHIN UPLAND AREAS SHALL BE ACCOMPLISHED USING A FILTERED PUMPING SYSTEM DIRECTING THE WATER TO AREAS APPROVED BY LEE COUNTY PUBLIC WORKS OR AUTHORIZED REPRESENTATIVE. IN ADDITION, STAKED FILTER CLOTH SYNTHETIC BALES, OR OTHER SUITABLE TURBIDITY CONTROL DEVICES SHALL BE DEPLOYED TO PREVENT SILTATION OR TURBID DISCHARGE INTO THE RECEIVING WATER BODY OR JURISDICTIONAL WETLAND FROM THIS OPERATION. DEWATERING WITHIN THE CANAL SHALL NOT CAUSE ADVERSE WATER QUALITY IMPACTS OR INCREASE TURBIDITY MORE THAN 29 NTUS ABOVE BACKGROUND (OR AS DIRECTED BY THE SWMD PERMIT FOR THE PROJECT'S CONSTRUCTION).

MAINTENANCE OF TRAFFIC NOTES

- PRIOR TO BEGINNING EACH PHASE OF CONSTRUCTION, CONTRACTOR TO SUBMIT A MAINTENANCE OF TRAFFIC PLAN (AS PER APPLICABLE FDOT INDEX NO. 102-600 SERIES) TO THE LEE COUNTY DEPARTMENT OF TRANSPORTATION FOR APPROVAL.
- CONTRACTOR TO NOTIFY ALL ADJACENT PROPERTY OWNERS AND FIRST RESPONDERS 48 HOURS IN ADVANCE OF ANY CONSTRUCTION ACTIVITIES THAT SHALL RESTRICT/LIMIT ACCESS, DELIVERY, ETC. TO COUNTY MAINTAINED ROADWAYS AND/OR PRIVATE ROADWAYS/PROPERTIES.
- CONTRACTOR TO MAINTAIN ALL COMMERCIAL/RESIDENTIAL DRIVEWAY ACCESS AT ALL TIMES DURING CONSTRUCTION.
- EXISTING POSTED SPEED LIMIT IS TO BE MAINTAINED.

STORM EVENT SUMMARY (EXISTING CONDITIONS)			
SITE	STORM EVENT	PEAK STAGE (FT.)	PEAK FLOW RATE (CFS)
AUSTIN STREET	25 YR / 72 HR	8.80	146
BEACON STREET	25 YR / 72 HR	9.70	121
CHATHAM STREET	25 YR / 72 HR	9.76	71
NOTE: STAGES AND FLOW RATES LISTED ARE APPROXIMATE ONLY.			

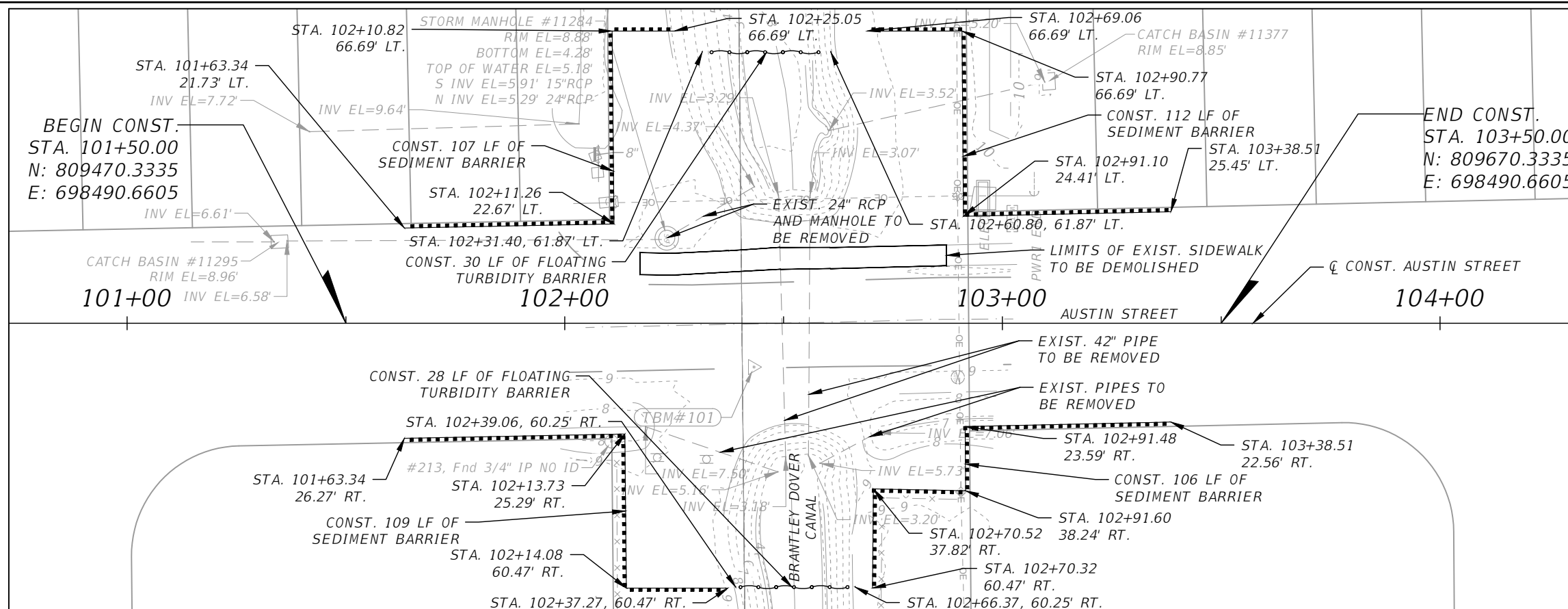
SUE LOCATES TABLE				
POINT #	NORTHING	EASTING	ELEVATION	DESCRIPTION
TH-01	809573.3190	698503.2000	9.21	THA 1 WM 6IN PVC C=1.46 HUB
TH-02	809567.0750	698508.3890	9.18	THA 2 POSS 8IN GM UNK HUB
TH-03	809592.3220	699277.6730	9.40	THA 3 WM 6IN ACP C=3.38 HUB
TH-04	809583.3850	699305.6170	9.27	THA 4 BT 1IN DBC C=1.76 HUB
TH-05	809593.5390	699626.4140	9.61	THA 5 WM 6IN ACP C=2.70 HUB

REVISIONS		ATKINS NORTH AMERICA, INC. 4030 W. BOY SCOUT BLVD., SUITE 700 TAMPA, FL 33607-1712 CERTIFICATE OF AUTHORIZATION NO. 24	ENGINEER OF RECORD: DANIEL B. PARSONS, P.E. FL. P.E. NO. 72371	LEE COUNTY PROCUREMENT MANAGEMENT 2115 SECOND STREET FORT MYERS, FLORIDA 33901	BRANTLEY DOVER CANAL IMPROVEMENTS		
DATE	DESCRIPTION				CONTRACT NO.	SHT. NO.	
						8876	G-2

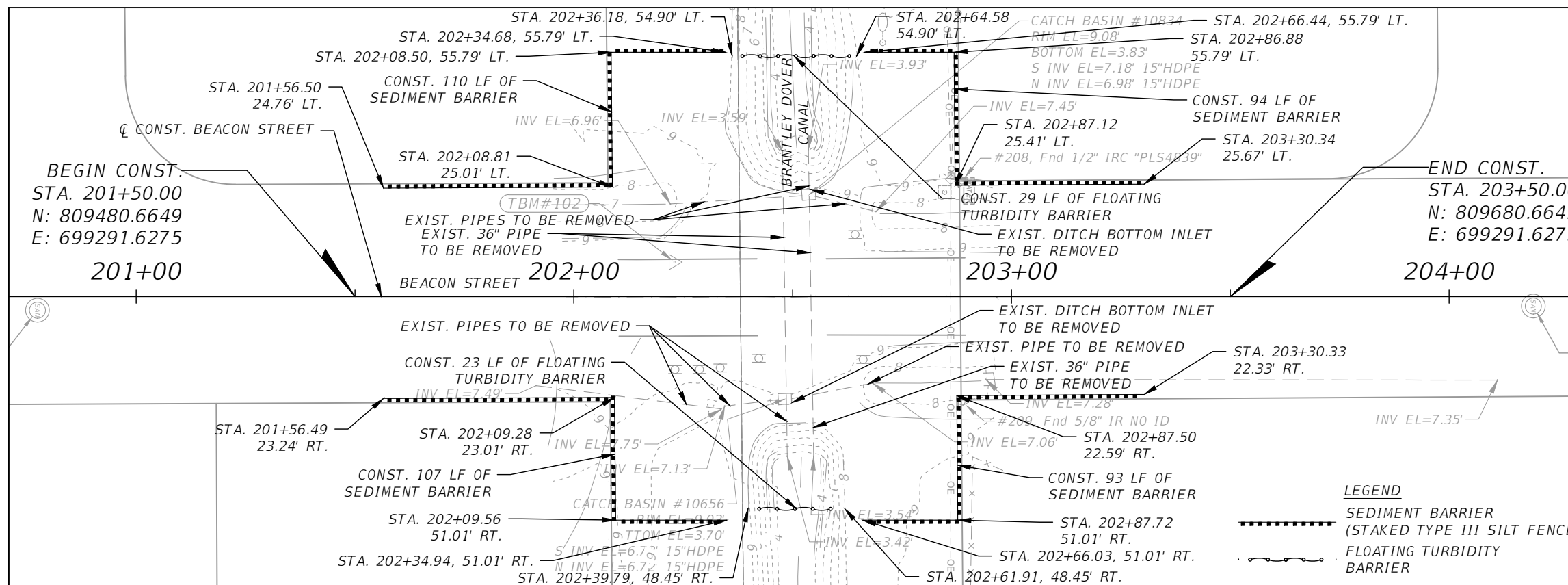


THE OFFICIAL RECORD OF THIS SHEET IS THE ELECTRONIC FILE DIGITALLY SIGNED AND SEALED UNDER RULE 61G15-23.004, F.A.C.

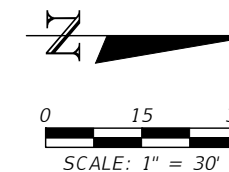
REVISIONS		ATKINS NORTH AMERICA, INC. 4030 W. BOY SCOUT BLVD., SUITE 700 TAMPA, FL 33607-1712 CERTIFICATE OF AUTHORIZATION NO. 24	ENGINEER OF RECORD: DANIEL B. PARSONS, P.E. FL. P.E. NO. 72371	LEE COUNTY PROCUREMENT MANAGEMENT 2115 SECOND STREET FORT MYERS, FLORIDA 33901	BRANTLEY DOVER CANAL IMPROVEMENTS	CONTRACT NO. 8876	SHT. NO. C-1
DATE	DESCRIPTION						
					PROJECT LAYOUT		



AUSTIN STREET - PLAN VIEW



BEACON STREET - PLAN VIEW



REVISIONS	
DATE	DESCRIPTION

ATKINS NORTH AMERICA, INC.
4030 W. BOY SCOUT BLVD., SUITE 700
TAMPA, FL 33607-1712
CERTIFICATE OF AUTHORIZATION NO. 24

ENGINEER OF RECORD:
DANIEL B. PARSONS, P.E.
FL. P.E. NO. 72371

LEE COUNTY PROCUREMENT MANAGEMENT
2115 SECOND STREET
FORT MYERS, FLORIDA 33901

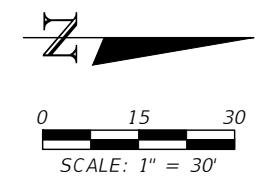
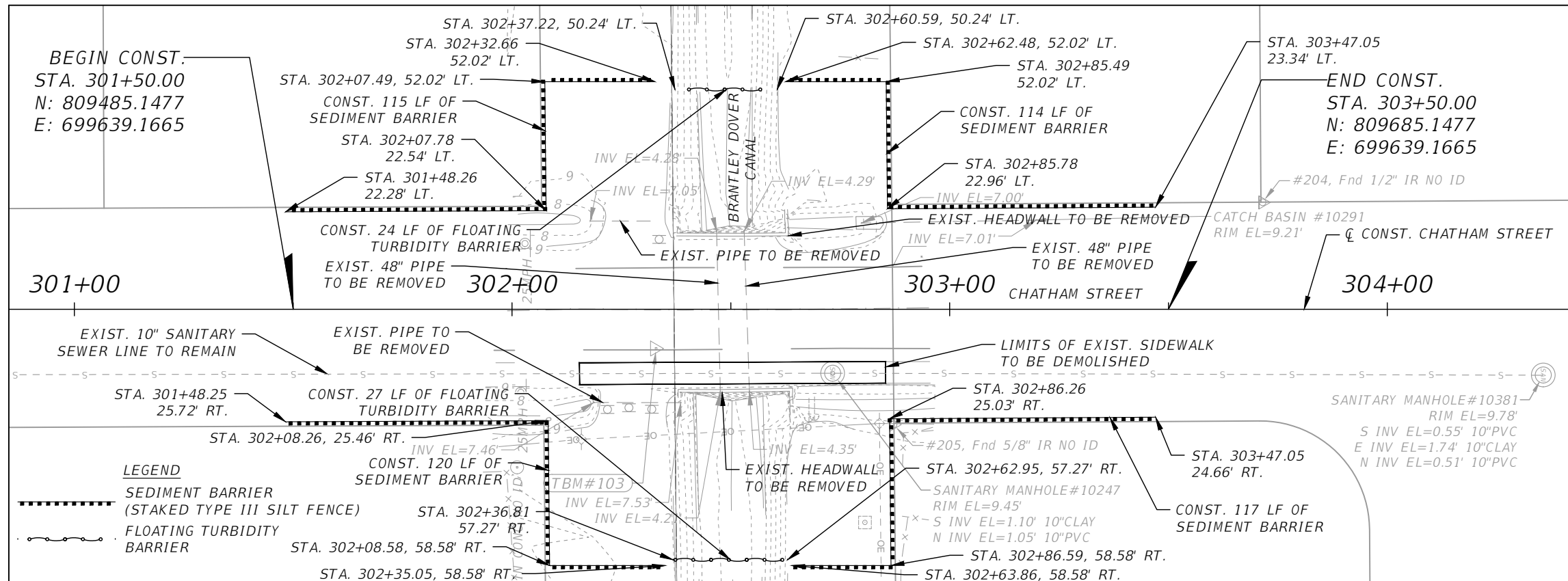
BRANTLEY DOVER CANAL IMPROVEMENTS

**DEMOLITION AND
EROSION CONTROL**

CONTRACT NO. 8876

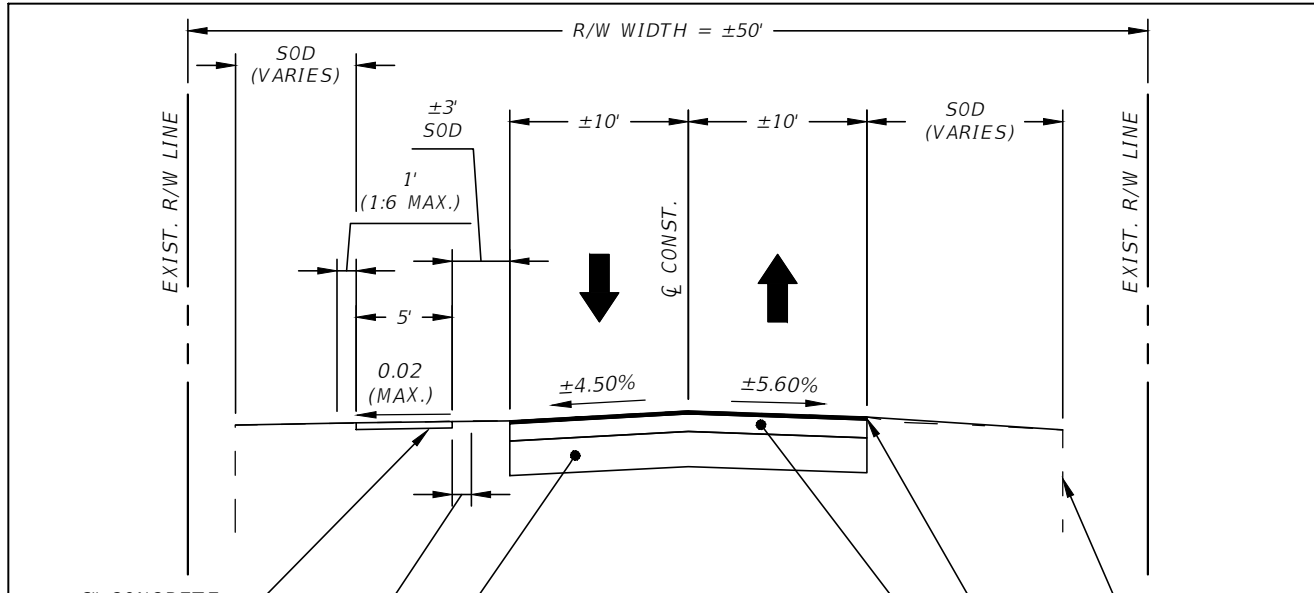
SHT. NO. C-2

THE OFFICIAL RECORD OF THIS SHEET IS THE ELECTRONIC FILE DIGITALLY SIGNED AND SEALED UNDER RULE 61G15-23.004, F.A.C.



THE OFFICIAL RECORD OF THIS SHEET IS THE ELECTRONIC FILE DIGITALLY SIGNED AND SEALED UNDER RULE 61G15-23.004, F.A.C.

REVISIONS		ATKINS NORTH AMERICA, INC. 4030 W. BOY SCOUT BLVD., SUITE 700 TAMPA, FL 33607-1712 CERTIFICATE OF AUTHORIZATION NO. 24	ENGINEER OF RECORD: DANIEL B. PARSONS, P.E. FL. P.E. NO. 72371	LEE COUNTY PROCUREMENT MANAGEMENT 2115 SECOND STREET FORT MYERS, FLORIDA 33901	BRANTLEY DOVER CANAL IMPROVEMENTS	
DATE	DESCRIPTION				CONTRACT NO.	SHT. NO.
					DEMOLITION AND EROSION CONTROL	8876 C-3

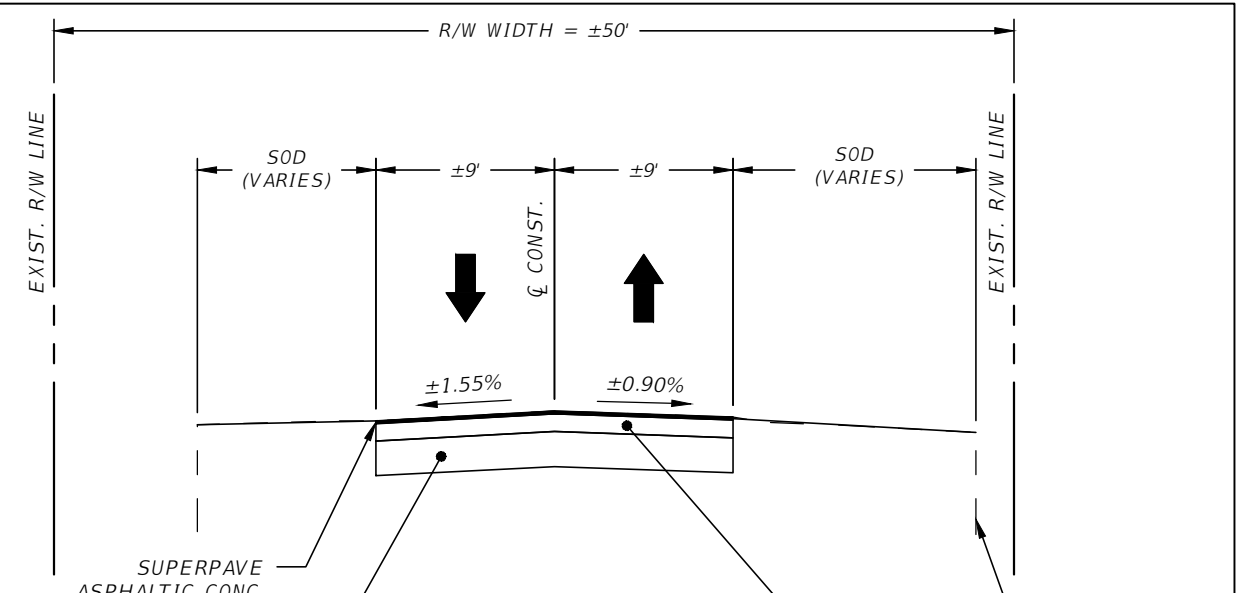


**TYPICAL SECTION
AUSTIN STREET**
25 M.P.H. POSTED SPEED LIMIT
STA. 101+50.00 - STA. 103+50.00

ROADWAY RECONSTRUCTION
STA. 102+27.21 - STA. 102+77.21
TYPE B STABILIZATION (12" MIN., LBR 100)
OPTIONAL BASE GROUP 07 (5½", TYPE B-12.5 ASPHALTIC CONC.)
SUPERPAVE ASPHALTIC CONC. (1¾", TRAFFIC C, TYPE SP-12.5)

MILLING AND RESURFACING
(1¾" AVERAGE DEPTH)
STA. 102+02.21 - STA. 102+27.21, STA. 102+77.21 - STA. 103+02.21

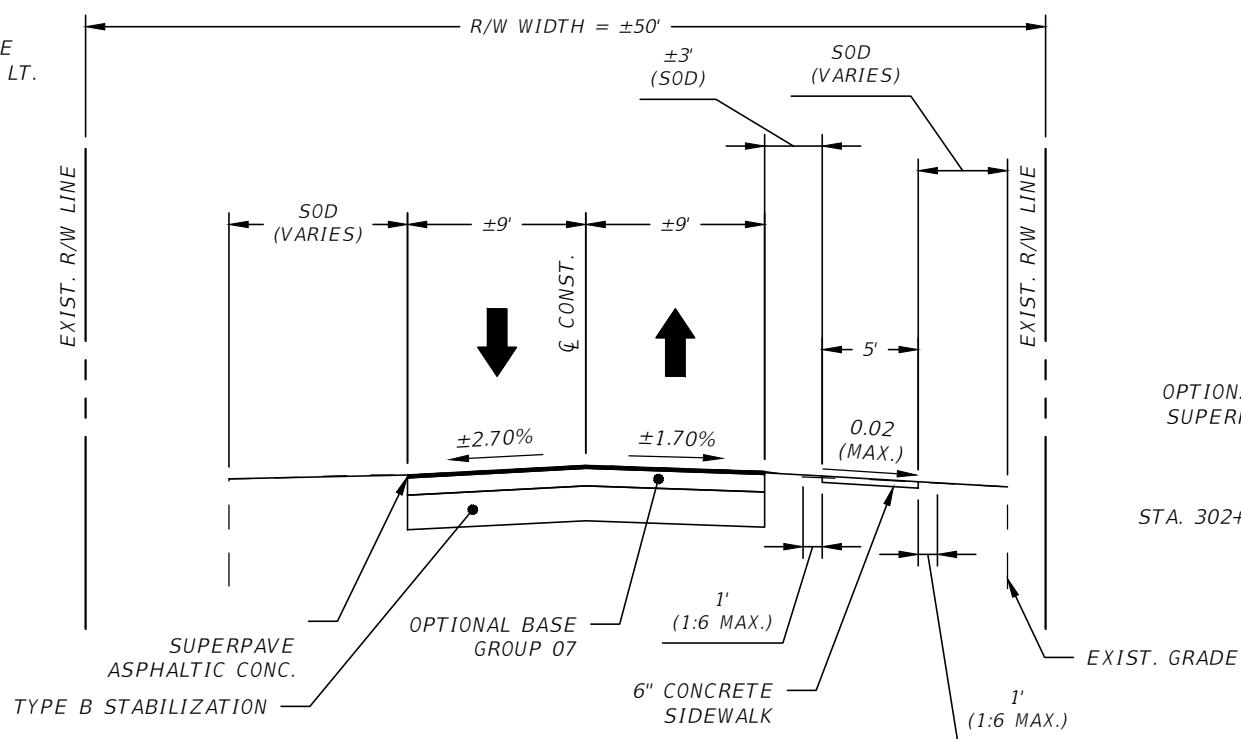
SIDEWALK
6" PORTLAND CEMENT CONCRETE
STA. 102+17.21 - STA. 102+87.21 LT.



**TYPICAL SECTION
BEACON STREET**
25 M.P.H. POSTED SPEED LIMIT
STA. 201+50.00 - STA. 203+50.00

ROADWAY RECONSTRUCTION
STA. 202+25.96 - STA. 202+75.96
TYPE B STABILIZATION (12" MIN., LBR 100)
OPTIONAL BASE GROUP 07 (5½", TYPE B-12.5 ASPHALTIC CONC.)
SUPERPAVE ASPHALTIC CONC. (1¾", TRAFFIC C, TYPE SP-12.5)

MILLING AND RESURFACING
(1¾" AVERAGE DEPTH)
STA. 202+00.96 - STA. 202+25.96, STA. 202+75.96 - STA. 203+00.96



**TYPICAL SECTION
CHATHAM STREET**
25 M.P.H. POSTED SPEED LIMIT
STA. 301+50.00 - STA. 303+50.00

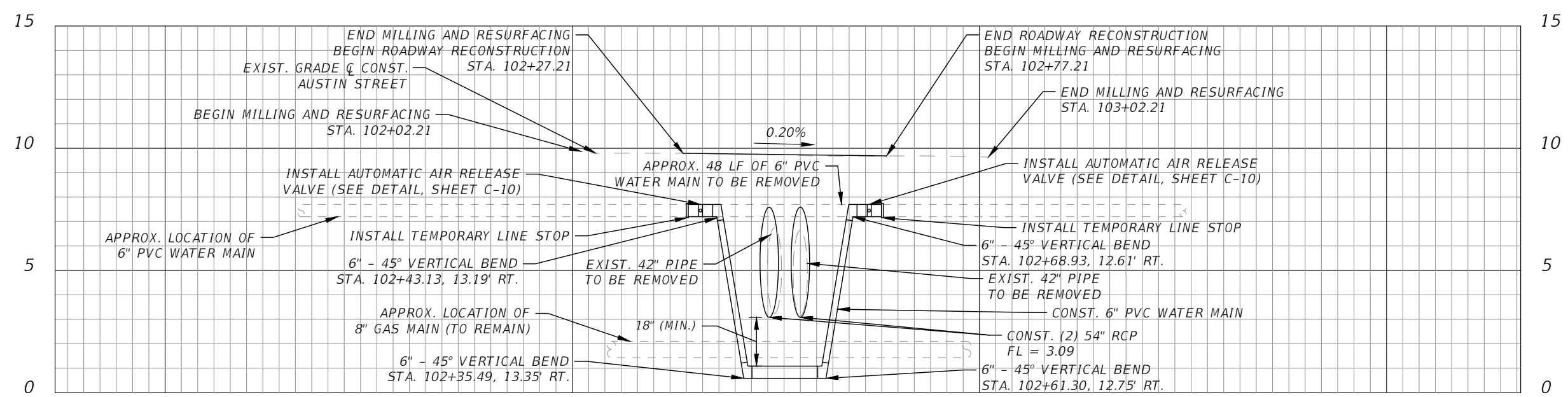
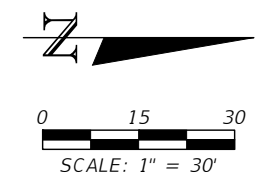
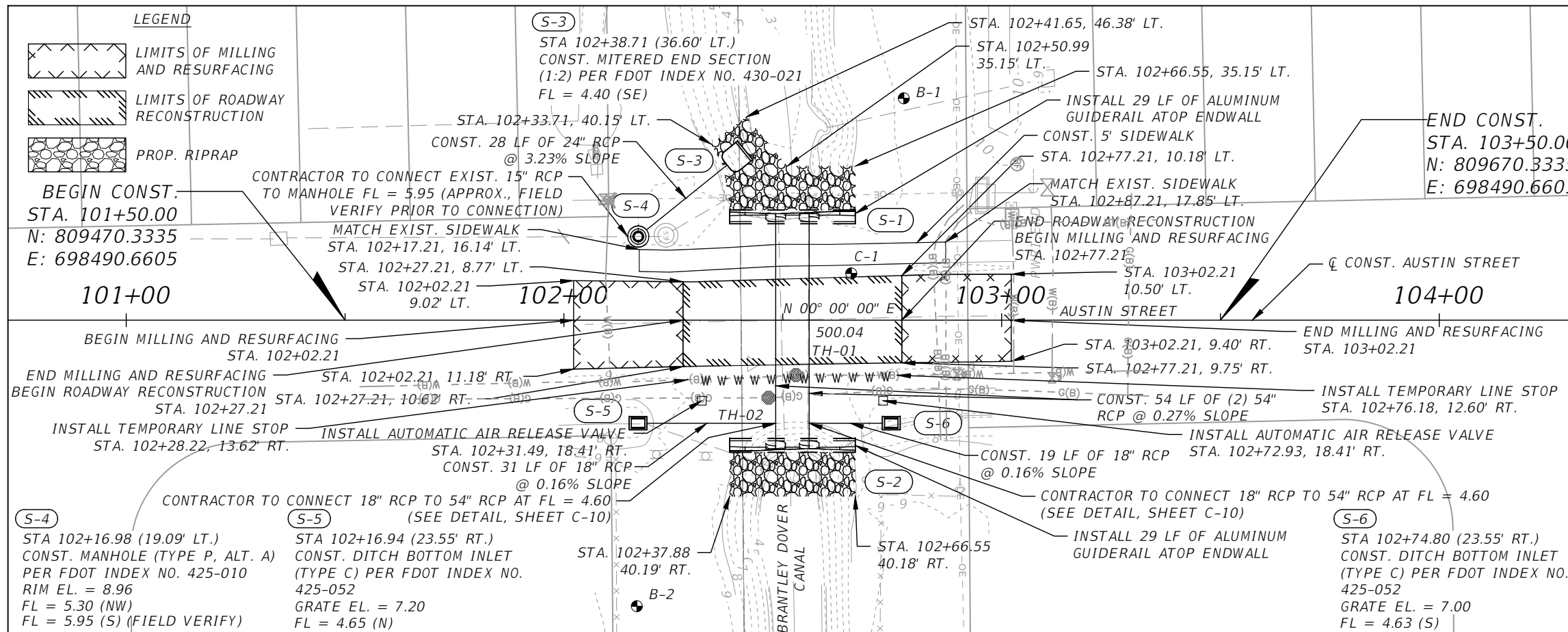
ROADWAY RECONSTRUCTION
STA. 302+25.42 - STA. 302+75.42
TYPE B STABILIZATION (12" MIN., LBR 100)
OPTIONAL BASE GROUP 07 (5½", TYPE B-12.5 ASPHALTIC CONC.)
SUPERPAVE ASPHALTIC CONC. (1¾", TRAFFIC C, TYPE SP-12.5)

MILLING AND RESURFACING
(1¾" AVERAGE DEPTH)
STA. 302+00.42 - STA. 302+25.42, STA. 302+75.42 - STA. 303+00.42

SIDEWALK
6" PORTLAND CEMENT CONCRETE
STA. 302+15.43 - STA. 302+85.37 RT.

REVISIONS		ATKINS NORTH AMERICA, INC. 4030 W. BOY SCOUT BLVD., SUITE 700 TAMPA, FL 33607-1712 CERTIFICATE OF AUTHORIZATION NO. 24	ENGINEER OF RECORD: DANIEL B. PARSONS, P.E. FL. P.E. NO. 72371	LEE COUNTY PROCUREMENT MANAGEMENT 2115 SECOND STREET FORT MYERS, FLORIDA 33901	BRANTLEY DOVER CANAL IMPROVEMENTS	CONTRACT NO. 8876	SHT. NO. C-4
DATE	DESCRIPTION						
					TYPICAL SECTIONS		

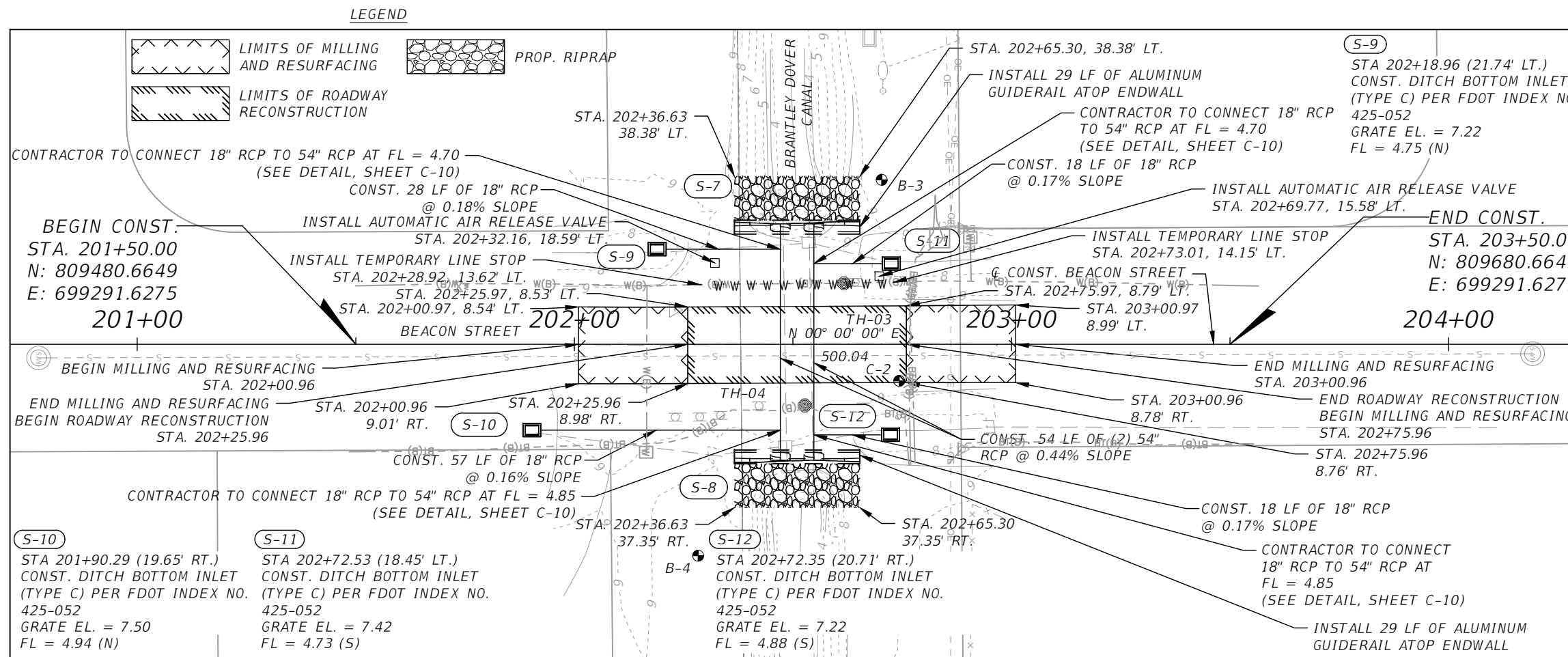
THE OFFICIAL RECORD OF THIS SHEET IS THE ELECTRONIC FILE DIGITALLY SIGNED AND SEALED UNDER RULE 61G15-23.004, F.A.C.



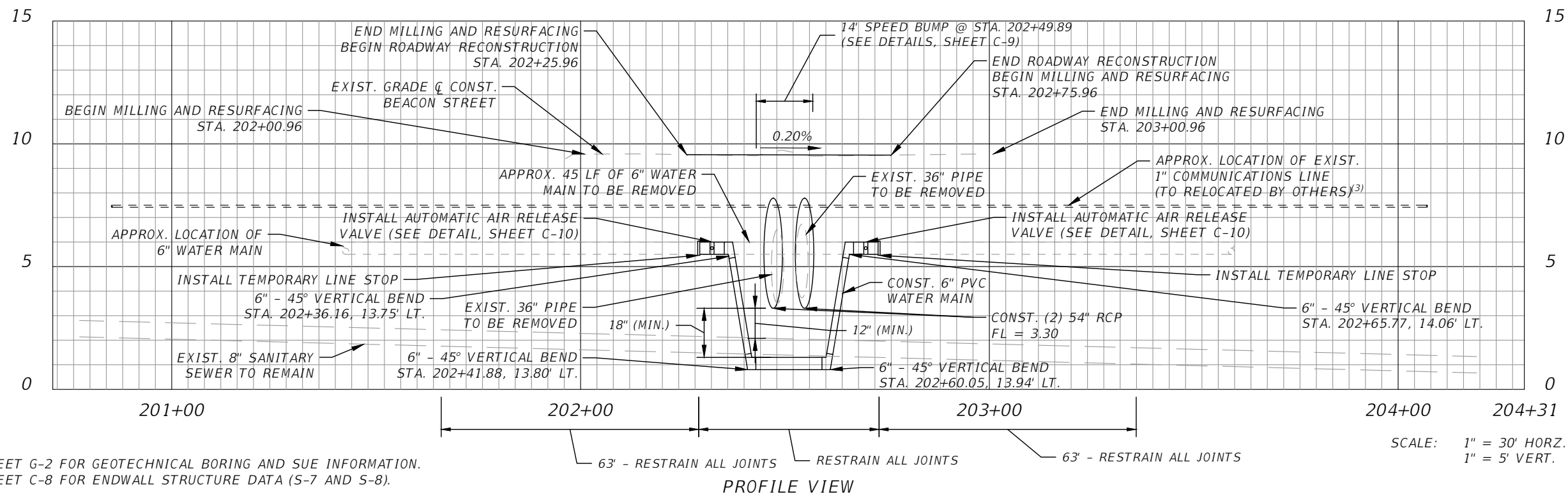
- NOTES:**
- REFER TO SHEET G-2 FOR GEOTECHNICAL BORING AND SUE INFORMATION.
 - REFER TO SHEET C-8 FOR ENDWALL STRUCTURE DATA (S-1 AND S-2).
 - COMCAST COULD NOT CONFIRM OWNERSHIP DURING UTILITY COORDINATION EFFORTS. CONTRACTOR TO CONTACT COMCAST AT LEAST 48 HOURS PRIOR TO COMMENCEMENT OF CONSTRUCTION ACTIVITIES. (SEE CONTACT INFORMATION ON SHEET G-2).

REVISIONS		ATKINS NORTH AMERICA, INC. 4030 W. BOY SCOUT BLVD., SUITE 700 TAMPA, FL 33607-1712 CERTIFICATE OF AUTHORIZATION NO. 24	ENGINEER OF RECORD: DANIEL B. PARSONS, P.E. FL. P.E. NO. 72371	LEE COUNTY PROCUREMENT MANAGEMENT 2115 SECOND STREET FORT MYERS, FLORIDA 33901	BRANTLEY DOVER CANAL IMPROVEMENTS	CONTRACT NO. 8876	SHT. NO. C-5
DATE	DESCRIPTION						
<p>PLAN AND PROFILE AUSTIN STREET</p>							

THE OFFICIAL RECORD OF THIS SHEET IS THE ELECTRONIC FILE DIGITALLY SIGNED AND SEALED UNDER RULE 61G15-23.004, F.A.C.



PLAN VIEW



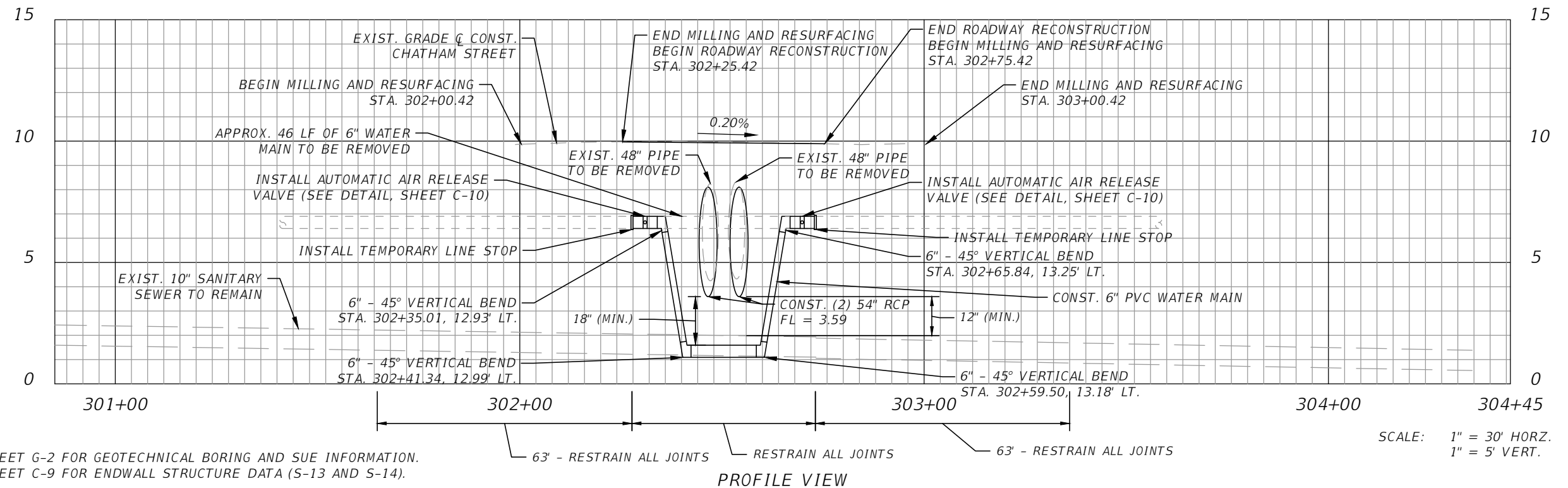
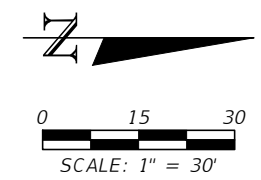
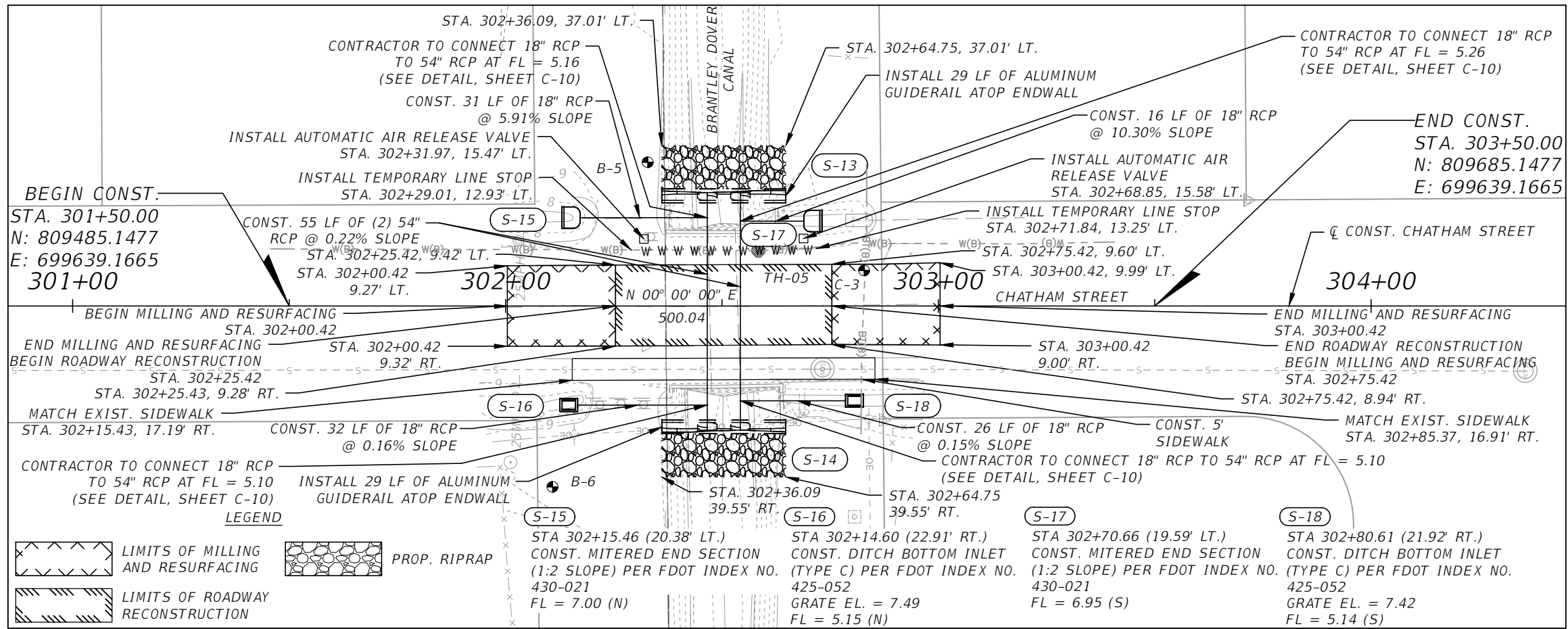
PROFILE VIEW

- NOTES:
 (1) REFER TO SHEET G-2 FOR GEOTECHNICAL BORING AND SUE INFORMATION.
 (2) REFER TO SHEET C-8 FOR ENDWALL STRUCTURE DATA (S-7 AND S-8).

REVISIONS		ATKINS NORTH AMERICA, INC. 4030 W. BOY SCOUT BLVD., SUITE 700 TAMPA, FL 33607-1712 CERTIFICATE OF AUTHORIZATION NO. 24	ENGINEER OF RECORD: DANIEL B. PARSONS, P.E. FL. P.E. NO. 72371	LEE COUNTY PROCUREMENT MANAGEMENT 2115 SECOND STREET FORT MYERS, FLORIDA 33901	BRANTLEY DOVER CANAL IMPROVEMENTS	CONTRACT NO. 8876	SHT. NO. C-6
DATE	DESCRIPTION						
<p>PLAN AND PROFILE BEACON STREET</p>							



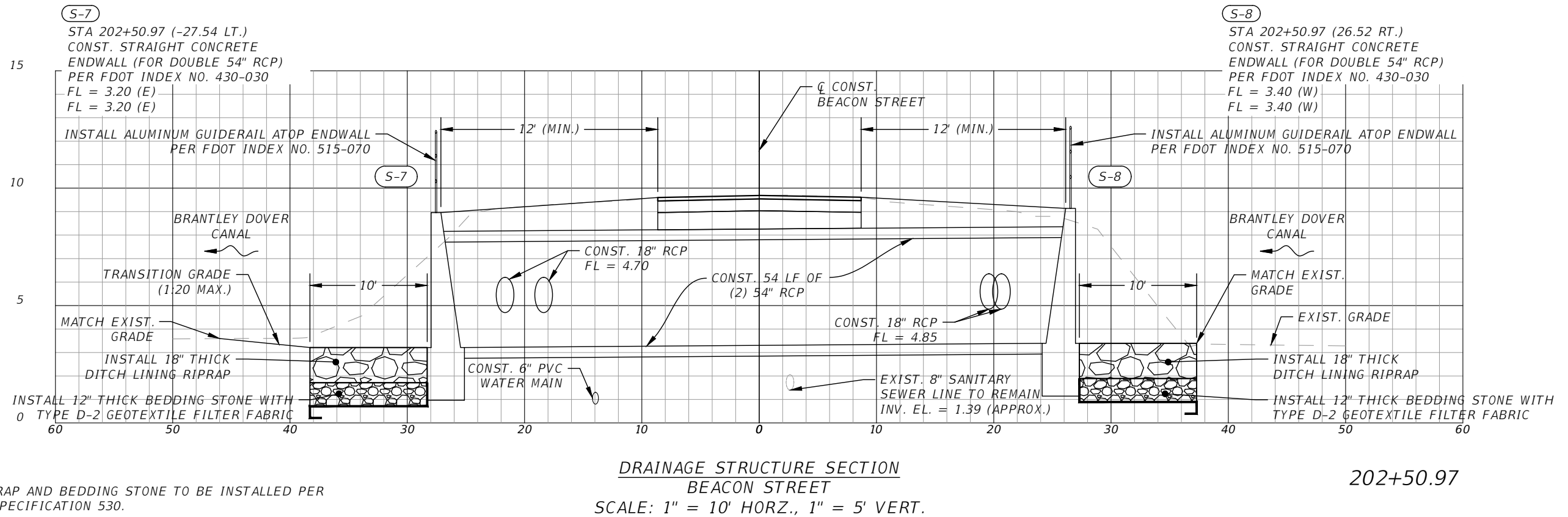
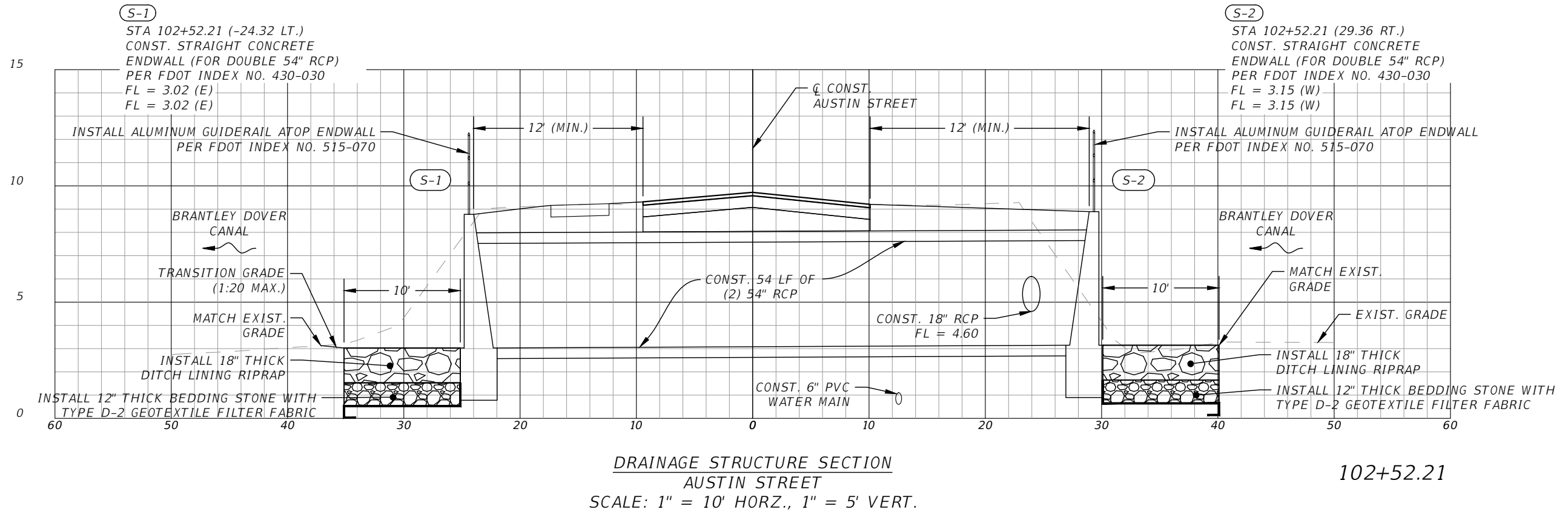
THE OFFICIAL RECORD OF THIS SHEET IS THE ELECTRONIC FILE DIGITALLY SIGNED AND SEALED UNDER RULE 61G15-23.004, F.A.C.



NOTES:
 (1) REFER TO SHEET G-2 FOR GEOTECHNICAL BORING AND SUE INFORMATION.
 (2) REFER TO SHEET C-9 FOR ENDWALL STRUCTURE DATA (S-13 AND S-14).

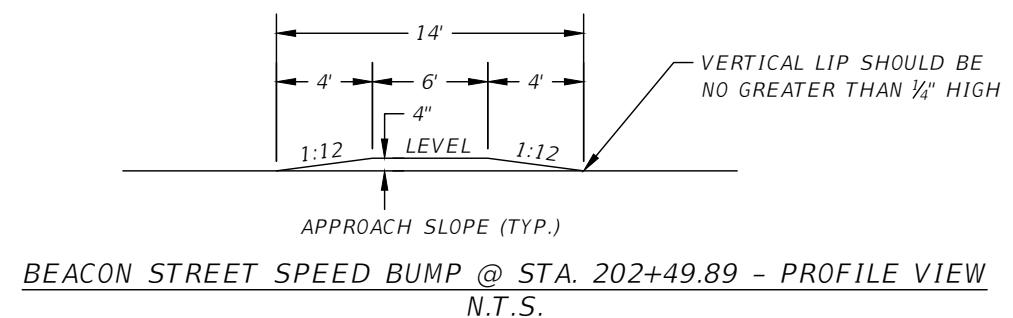
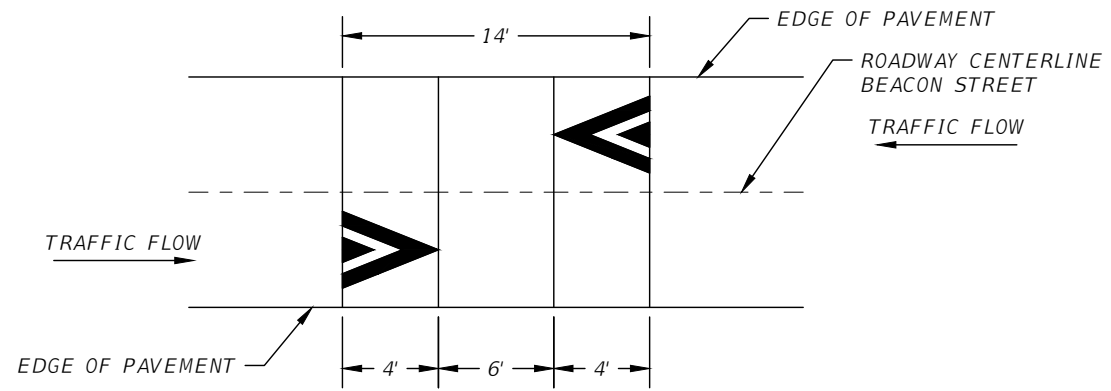
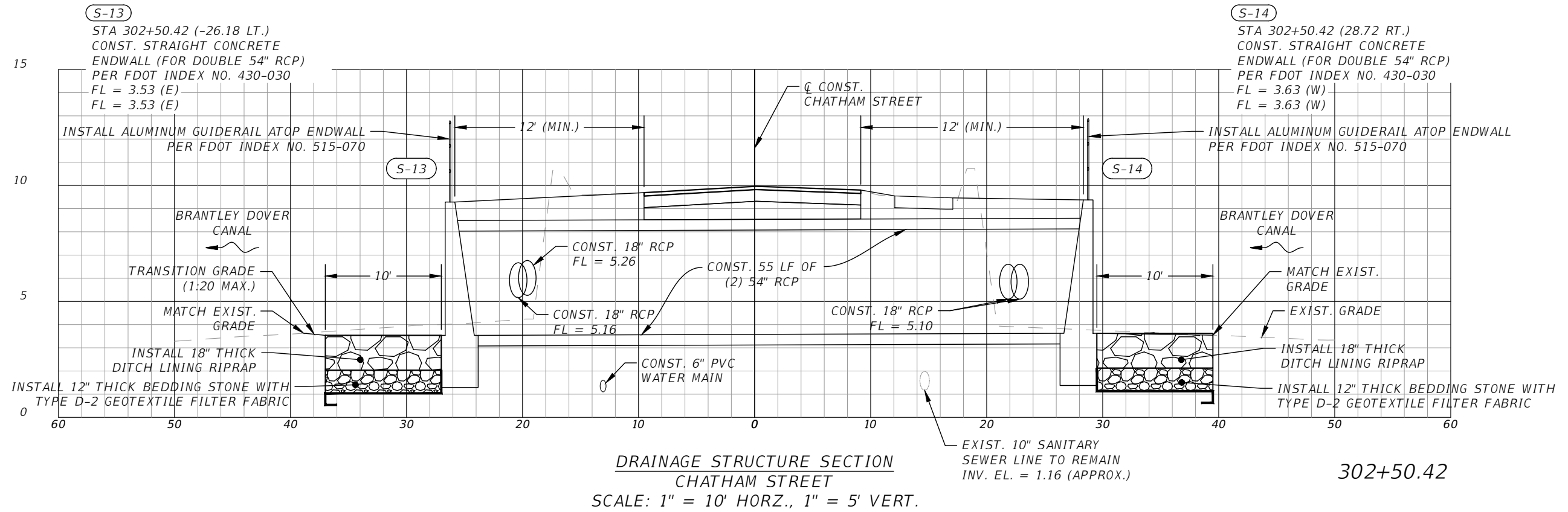
REVISIONS		ATKINS NORTH AMERICA, INC. 4030 W. BOY SCOUT BLVD., SUITE 700 TAMPA, FL 33607-1712 CERTIFICATE OF AUTHORIZATION NO. 24	ENGINEER OF RECORD: DANIEL B. PARSONS, P.E. FL. P.E. NO. 72371	LEE COUNTY PROCUREMENT MANAGEMENT 2115 SECOND STREET FORT MYERS, FLORIDA 33901	BRANTLEY DOVER CANAL IMPROVEMENTS		
DATE	DESCRIPTION				CONTRACT NO.	SHT. NO.	
						8876	C-7

THE OFFICIAL RECORD OF THIS SHEET IS THE ELECTRONIC FILE DIGITALLY SIGNED AND SEALED UNDER RULE 61G15-23.004, F.A.C.



NOTE:
 DITCH LINING RIPRAP AND BEDDING STONE TO BE INSTALLED PER
 FDOT STANDARD SPECIFICATION 530.

REVISIONS		ATKINS NORTH AMERICA, INC. 4030 W. BOY SCOUT BLVD., SUITE 700 TAMPA, FL 33607-1712 CERTIFICATE OF AUTHORIZATION NO. 24	ENGINEER OF RECORD: DANIEL B. PARSONS, P.E. FL. P.E. NO. 72371	LEE COUNTY PROCUREMENT MANAGEMENT 2115 SECOND STREET FORT MYERS, FLORIDA 33901	BRANTLEY DOVER CANAL IMPROVEMENTS	CONTRACT NO.	SHT. NO.
DATE	DESCRIPTION						
					DRAINAGE STRUCTURE SECTIONS	8876	C-8



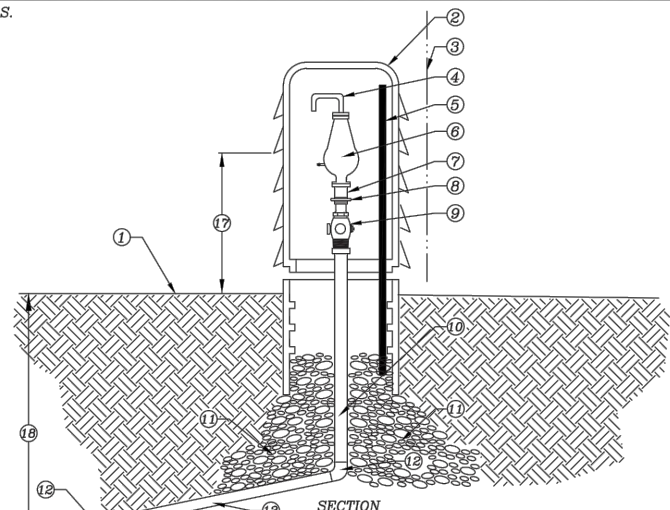
NOTE:
 DITCH LINING RIPRAP AND BEDDING STONE TO BE INSTALLED
 PER FDOT STANDARD SPECIFICATION 530.

REVISIONS		ATKINS NORTH AMERICA, INC. 4030 W. BOY SCOUT BLVD., SUITE 700 TAMPA, FL 33607-1712 CERTIFICATE OF AUTHORIZATION NO. 24	ENGINEER OF RECORD: DANIEL B. PARSONS, P.E. FL. P.E. NO. 72371	LEE COUNTY PROCUREMENT MANAGEMENT 2115 SECOND STREET FORT MYERS, FLORIDA 33901	BRANTLEY DOVER CANAL IMPROVEMENTS	CONTRACT NO. 8876	SHT. NO. C-9
DATE	DESCRIPTION						
					DRAINAGE STRUCTURE SECTIONS		

THE OFFICIAL RECORD OF THIS SHEET IS THE ELECTRONIC FILE DIGITALLY SIGNED AND SEALED UNDER RULE 61G15-23.004, F.A.C.

**STANDARD DETAIL NO. 6.4
LEE COUNTY UTILITIES
AUTOMATIC AIR RELEASE VALVE**

N.T.S.

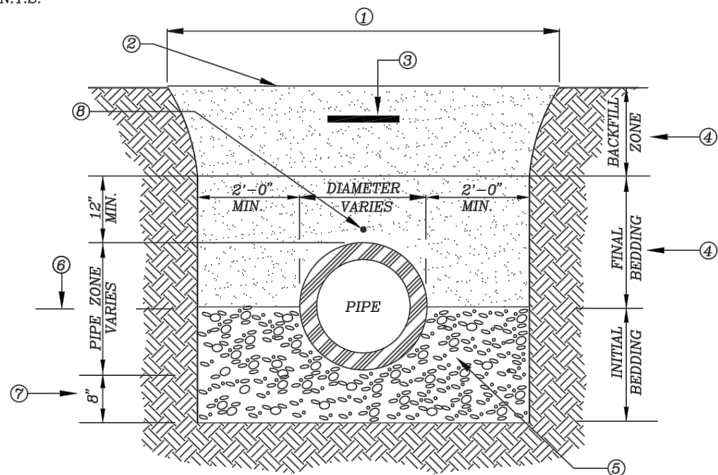


- SECTION**
- ① FINISHED GRADE
 - ② PEDESTAL HOUSING (SEE APPROVED MATERIAL LIST)
COLORS: BLUE-WATER, GREEN-SEWER, PANTONE-REUSE
 - ③ EDGE OF RIGHT-OF-WAY
 - ④ PVC STREET ELL
 - ⑤ S.S. POST WITH S.S. HARDWARE AND S.S. LOCKING HASP WITH BRASS LOCK
 - ⑥ SHORT BODY AUTOMATIC AIR RELEASE VALVE (SEE APPROVED MATERIAL LIST)
ALL INTERNAL WORKING PARTS SHALL BE 300 SERIES STAINLESS STEEL
 - ⑦ PVC SCHEDULE 80
 - ⑧ PVC REDUCER IF NEEDED
 - ⑨ BRASS BALL CORP. STOP
 - ⑩ 2" POLY-TUBE
 - ⑪ 3/4" GRANULAR MATERIAL, #57 STONE
 - ⑫ 2" BRASS FITTING IF NECESSARY
 - ⑬ 1% MIN. SLOPE UP, 2" POLY-TUBE
 - ⑭ TAP AT CROWN OF PIPE
 - ⑮ 2" DOUBLE STRAP TAPPING SADDLE (SEE APPROVED MATERIAL LIST)
 - ⑯ EXISTING PRESSURE MAIN
 - ⑰ 24"
 - ⑱ 30" MIN.

REV: 12/10/2015

**STANDARD DETAIL NO. 6.5
LEE COUNTY UTILITIES
TRENCH CROSS SECTION**

N.T.S.



- ① EXCAVATED TRENCH
- ② FINISHED GRADE
- ③ MARKING TAPE 12" DEPTH MAX.
- ④ MATERIALS CLEAN DRY SAND, FINE LIME ROCK OR PIT SHELL MECHANICALLY COMPACTED IN 6" LIFTS TO AT LEAST 95% OF MAX DENSITY, OR 98% IF UNDER PAVED AREA OF ROADWAY.
- ⑤ #57 STONE LOCATED UNDER PIPE OR EXISTING UNDISTURBED SUITABLE MATERIAL
- ⑥ SPRING LINE
- ⑦ STANDARD 8" MIN TRENCH UNDERCUT AND BACKFILL WITH #57 STONE COMPACTED IN 6" LIFTS. ADDITIONAL UNDERCUT AND CRUSHED ROCK BEDDING FOUNDATION WHEN DIRECTED BY L.C.U. THE CONTRACTOR IS TO REMOVE UNSTABLE MATERIAL FROM THE TRENCH FOUNDATION. THEN INSTALL STABILIZED CRUSHED ROCK BACKFILL WITH #57 STONE COMPACTED IN 6" LIFTS
- ⑧ LOCATING WIRE IS REQUIRED FOR ALL PRESSURIZED PIPELINES.

REV: 12/10/2015

**STANDARD DETAIL NO. 6.12
LEE COUNTY UTILITIES
RESTRAINED LENGTH SCHEDULE**

N.T.S.

DUCTILE IRON PIPE

PIPE SIZE (Inches)	MINIMUM RESTRAINED PIPE LENGTH (FEET)				DEAD END/VALVE	HORIZONTAL TEE
	90°	45°	22-1/2°	11-1/4°		
4	17	7	4	2	29	6
6	23	10	5	2	40	17
8	29	12	6	3	53	29
10	35	14	7	4	63	38
12	41	17	8	4	74	49
16	51	21	11	5	94	68
24	69	29	14	7	131	105
30	81	34	17	8	156	129

PVC PIPE

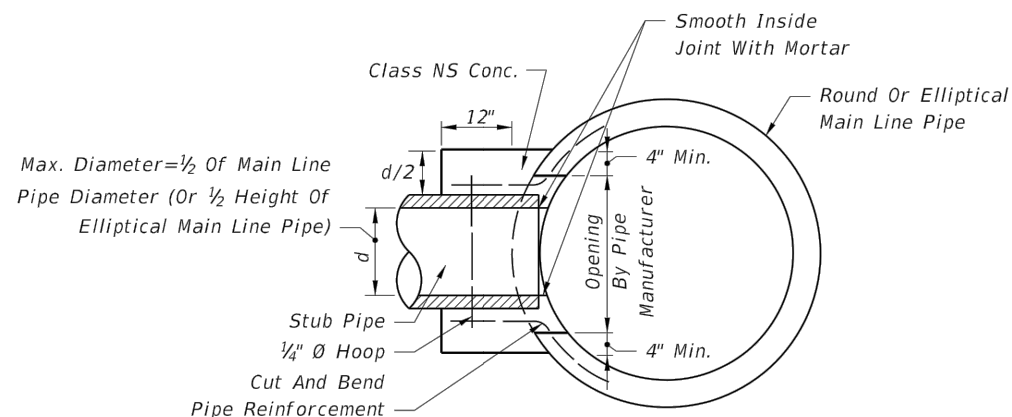
PIPE SIZE (Inches)	MINIMUM RESTRAINED PIPE LENGTH (FEET)				DEAD END/VALVE	HORIZONTAL TEE
	90°	45°	22-1/2°	11-1/4°		
4	20	8	4	2	45	8
6	29	12	6	3	63	25
8	36	15	8	4	83	43
10	44	18	9	5	99	58
12	51	21	11	5	116	74
16	63	26	13	7	149	103
24	87	36	18	9	208	158
30	102	42	21	10	248	194

A COMPLETE JOINT RESTRAINING SCHEDULE FOR ALL ENCOUNTERED VERTICAL & HORIZONTAL BENDS, VERTICAL OFFSETS, TEES, AND DEAD ENDS SHALL BE THE RESPONSIBILITY OF THE DESIGN ENGINEER.

LENGTH FIGURES BASED ON FOLLOWING:

Pressure = 150 psi, FS = 1.5, trench type = 3, 30" cover on Bare pipe, Soil type = GP & SP

REV: 12/22/2022



Cost of concrete and steel to be included in contract unit price for pipe culvert.

**CONCRETE COLLAR FOR JOINING
MAINLINE PIPE AND STUB PIPE**

REVISIONS		ATKINS NORTH AMERICA, INC. 4030 W. BOY SCOUT BLVD., SUITE 700 TAMPA, FL 33607-1712 CERTIFICATE OF AUTHORIZATION NO. 24	ENGINEER OF RECORD: DANIEL B. PARSONS, P.E. FL. P.E. NO. 72371	LEE COUNTY PROCUREMENT MANAGEMENT 2115 SECOND STREET FORT MYERS, FLORIDA 33901	BRANTLEY DOVER CANAL IMPROVEMENTS	CONTRACT NO. 8876	SHT. NO. C-10
DATE	DESCRIPTION						
					DETAILS		