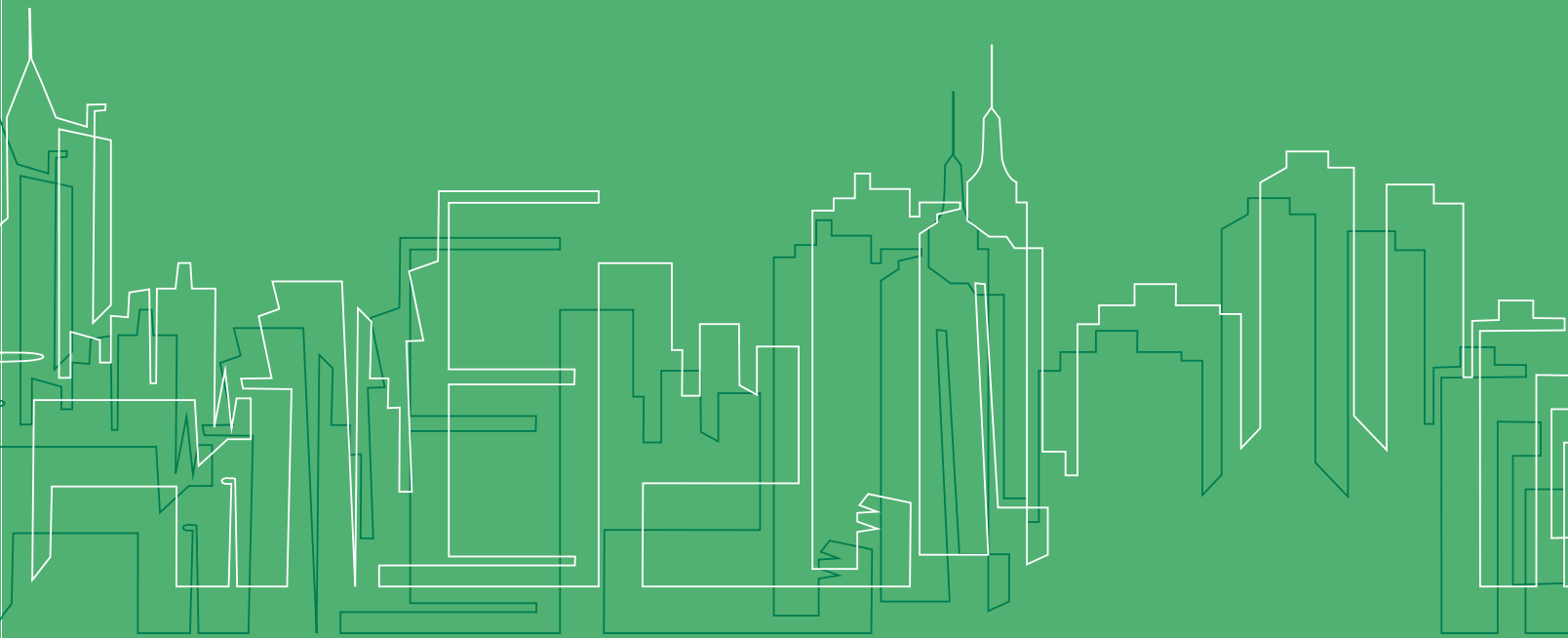




ASSA ABLOY

# Product Pricelist

U.S. & Canada Effective Date: April 17, 2023



Experience a safer  
and more open world



ASSA ABLOY



# Product Pricelist

U.S. & Canada Effective date April 17, 2023



## HES Product List

### Electric Strikes

1006 .....	2
1500 Series™ .....	4
1600 Series™ .....	5
ES100 Aperio® Wireless Electric Strike with Card Reader Kits .....	6
4500C .....	7
5000, 5200, 5300 .....	8
7000 .....	9
7501 .....	10
8000, 8300 .....	10
8500 .....	11
Securitron UNL, MUNL .....	11
9400, 9500, 9600, 9700, 9800 .....	12
Folger Adam SB:310-1(X) .....	13
Folger Adam 310-2, 310-2 3/4, 310-2 3/4OB .....	14
Folger Adam 310-3-1 .....	14
Folger Adam 310-4, 310-4 (S) .....	15
Folger Adam 310-4-X .....	15
Folger Adam 310-6-X .....	17
Folger Adam 310-1-X .....	19
Folger Adam 712, 712-75 .....	20
Folger Adam 732, 732-75 .....	20
Folger Adam SB710, SB710-75 .....	21
Folger Adam SB730, SB730-75 .....	21
Folger Adam 742-75 .....	22
Folger Adam SB740-75 .....	22
Electric Strike Accessories .....	23

### Cabinet Locks

610 .....	24
660 .....	24
KP20 Stand-Alone Keypad Cabinet Lock .....	24
K100 Aperio® Wireless Cabinet Lock Kits .....	25
K200 Integrated Wired Access Control Cabinet Lock .....	25
KS-M Mechanical Server Cabinet Lock .....	26
KS200 Wiegand Integrated Wired Access Control Server Cabinet Lock .....	26
KS210 Integrated Wired, RS-485 OSDP Access Control Server Cabinet Lock .....	27
K200, KS-M, KS200, KS210 Accessories .....	27

### Warranties | Terms & Conditions

Warranties, Terms & Conditions .....	28
--------------------------------------	----

# Electric Strikes

## 1006CLB Complete Pacs for Latchbolt Locks

MODEL	DESCRIPTION	630
1006CLB		\$755
1006CLB-F	Fail Safe	\$755
1006CLB-LBM		\$885
1006CLB-F-LBM	Fail Safe	\$885
1006CLB-LBSM		\$905
1006CLB-F-LBSM	Fail Safe	\$905

## 1006CDB Complete Pacs for Locks with Deadbolts

MODEL	DESCRIPTION	630
1006CDB		\$785
1006CDB-F	Fail Safe	\$785

## 1006CAS Complete Pacs for Locks with Continuous Deadbolt Recapture

MODEL	DESCRIPTION	630
1006CAS		\$796
1006CAS-F	Fail Safe	\$796
1006CAS-2		\$828
1006CAS-2-F	Fail Safe	\$828

## 1006CS Complete Pacs for Latchbolts & Deadbolts

MODEL	DESCRIPTION	630
1006CS		\$840
1006CS-F	Fail Safe	\$840

## 1006 Electric Strike Bodies

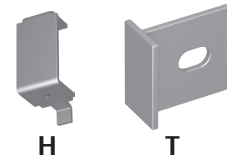
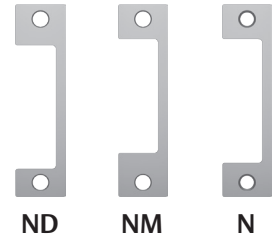
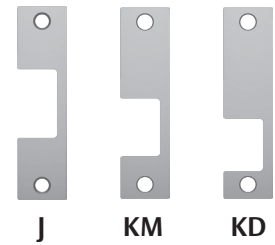
MODEL	DESCRIPTION	605	606	612	613	629	630	BLK
1006		\$853	\$836	\$836	\$800	\$853	\$700	\$750
1006-F	Fail Safe	\$853	\$836	\$836	\$800	\$853	\$700	\$750
1006-LBM		\$983	\$966	\$966	\$930	\$983	\$830	\$880
1006-F-LBM	Fail Safe	\$983	\$966	\$966	\$930	\$983	\$830	\$880
1006-LBSM		\$1003	\$986	\$986	\$950	\$1003	\$850	\$900
1006-F-LBSM	Fail Safe	\$1003	\$986	\$986	\$950	\$1003	\$850	\$900



How to Orders on next page

### Faceplates

MODEL	605	606	612	613	629	630	BLK
LB						\$55	
DB						\$85	
DB2						\$111	
J	\$136	\$122	\$122	\$74	\$122	\$44	\$73
KD	\$136	\$122	\$122	\$74	\$122	\$44	\$73
KM	\$136	\$122	\$122	\$74	\$122	\$44	\$73
ND	\$137	\$120	\$120	\$97	\$120	\$68	\$96
NM	\$137	\$120	\$120	\$97	\$120	\$68	\$96
HM	\$137	\$120	\$120	\$97	\$120	\$68	\$96
HTD	\$137	\$120	\$120	\$97	\$120	\$68	\$96



### Specialty Faceplates

MODEL	605	606	612	613	629	630	BLK
E	\$138	\$122	\$122	\$97	\$122	\$68	\$96
R	\$138	\$122	\$122	\$97	\$122	\$68	\$96
Z	\$137	\$120	\$120	\$75	\$120	\$45	\$74
J-2	\$152	\$133	\$133	\$119	\$133	\$88	\$117
KM-2	\$152	\$133	\$133	\$119	\$133	\$88	\$117

### Accessories

ITEM	DESCRIPTION	PRICE
1000-102	Rain guard	\$43
1000-104	Lip extension trim adapter (BLK)	\$79
1000-110	Replacement strike plate	\$131
1000-130	KD filler plate	\$58
1006-103	Full keeper shims	\$15
1006-105	Trim enhancer (BLK)	\$41

### How to Order Specify quantity and the following information. Order related products separately.

SERIES	MODEL	FAIL SAFE/SECURE	FINISH*	OPTION(S)
1006	—	– F	– 630	– LBM
1006 Universal Electric Strike Faceplates ordered separately	<p><b>CS**</b> Complete Electric Strike; includes the SMART Pac® III and J, KD, KM, HM, and AD faceplates</p> <p><b>CLB</b> Complete Electric Strike for latchbolt locks; includes the J, K, KD, and KM faceplates</p> <p><b>CDB**</b> Complete Electric Strike for Deadbolt Locks; includes the HM and AD faceplates</p> <p><b>CAS</b> Complete Electric Strike for Locks with Continuous Deadbolt Recature; includes the ND and NM faceplates</p>	<p><b>F</b> Fail Safe</p> <p><b>(blank)</b> Fail Secure (standard)</p>	<p><b>605</b> Bright Brass</p> <p><b>606</b> Satin Brass</p> <p><b>612</b> Satin Bronze</p> <p><b>613</b> Bronze Toned</p> <p><b>629</b> Bright Stainless Steel</p> <p><b>630</b> Satin Stainless Steel</p> <p><b>BLK</b> Black</p>	<p><b>LBM</b> Latchbolt Monitor</p> <p><b>LBSM</b> Latchbolt Strike Monitor</p>

\*Complete Pacs are only available in the 630 finish. \*\*Complete Pacs with deadbolts are not available with monitoring options.

### 1500C Series™ Complete Pacs for Latchbolt Locks

MODEL	DESCRIPTION	605	606	612	613E	629	630	BSP
<b>1500C</b>		\$882	\$871	\$871	\$742	\$882	\$639	\$742
<b>1500C-LM</b>	Lock monitors	\$987	\$976	\$976	\$847	\$987	\$744	\$847
<b>1500C-DLM</b>	Dual lock monitors	\$1092	\$1081	\$1081	\$952	\$1092	\$849	\$952
<b>1500C-LMS</b>	Lock monitors & strike monitors	\$1002	\$991	\$991	\$862	\$1002	\$759	\$862
<b>1500C-DLMS</b>	Dual lock monitors & strike monitors	\$1107	\$1096	\$1096	\$967	\$1107	\$864	\$967



### 1500 Series™ Electric Strike Bodies

MODEL	DESCRIPTION	605	606	612	613E	629	630	BSP
<b>1500</b>		\$714	\$700	\$700	\$655	\$714	\$590	\$655
<b>1500-LM</b>	Lock monitor	\$819	\$805	\$805	\$760	\$819	\$695	\$760
<b>1500-DLM</b>	Dual lock monitors	\$924	\$910	\$910	\$865	\$924	\$800	\$865
<b>1500-LMS</b>	Lock monitor & strike monitor	\$834	\$820	\$820	\$775	\$834	\$710	\$775
<b>1500-DLMS</b>	Dual lock monitors & strike monitor	\$939	\$925	\$925	\$880	\$939	\$815	\$880

### 1500 Faceplates

MODEL	605	606	612	613E	629	630	BSP
<b>1LB</b>	\$168	\$171	\$171	\$87	\$168	\$51	\$87
<b>1LB-2</b>	\$231	\$144	\$144	\$122	\$231	\$85	\$122

### 1500 Accessories

MODEL	DESCRIPTION	605	606	612	613E	629	630	BSP
<b>1500-104</b>	Lip extension trim adapter	\$114	\$107	\$107	\$91	\$114	\$50	\$91
<b>1500-106</b>	4500 filler plates and trim enhancer kit	\$106	\$100	\$100	\$84	\$106	\$43	\$84

### Accessories

ITEM	DESCRIPTION	PRICE
<b>OPT-1SRK</b>	Optional spring replacement kit	\$54
<b>OPT-1LM</b>	Optional upgrade kit includes single lock monitor	\$125
<b>OPT-1DLM</b>	Optional kit includes dual lock monitors	\$250
<b>MOD-1SOL</b>	Solenoid replacement module	\$339

### How to Order *Specify quantity and the following information. Order related products separately.*

SERIES	MODEL	FINISH	OPTION(S)*
<b>1500</b>	—	<b>– 630</b>	<b>– LM</b>
<b>1500</b> Universal Electric Strike faceplate option kits ordered separately	<b>C</b> Complete Electric Strike; includes 1LB faceplate kit for latchbolts	<b>605</b> Bright Brass <b>606</b> Satin Brass <b>612</b> Satin Bronze <b>613E</b> Dark Oxidized Satin Bronze Powder <b>629</b> Bright Stainless Steel <b>630</b> Satin Stainless Steel <b>BSP</b> Black Suede Powder	<b>LM</b> Lock Monitor <b>DLM</b> Dual Lock Monitor <b>LMS</b> Lock Monitor and Strike Monitor <b>DLMS</b> Dual Lock Monitors and Strike Monitor

\*LMS/DLMS factory installed only option.

## 1600CLB Series™ Complete Pacs for Latchbolt Locks

MODEL	DESCRIPTION	605	606	612	613E	629	630	BSP
1600-CLB		\$882	\$871	\$871	\$742	\$882	\$639	\$742
1600-CLB-LM	Lock monitor	\$987	\$976	\$976	\$847	\$987	\$744	\$847
1600-CLB-DLM	Dual lock monitor	\$1092	\$1081	\$1081	\$952	\$1092	\$849	\$952
1600-CLB-LMS	Lock monitor & strike monitor	\$1002	\$991	\$991	\$862	\$1002	\$759	\$862
1600-CLB-DLMS	Dual lock monitors & strike monitor	\$1107	\$1096	\$1096	\$967	\$1107	\$864	\$967

## 1600CDB Series™ Complete Pacs for Locks with Deadbolts

MODEL	DESCRIPTION	605	606	612	613E	629	630	BSP
1600-CDB		\$882	\$871	\$871	\$742	\$882	\$639	\$742
1600-CDB-LM	Lock monitor	\$987	\$976	\$976	\$847	\$987	\$744	\$847
1600-CDB-DLM	Dual lock monitors	\$1092	\$1081	\$1081	\$952	\$1092	\$849	\$952
1600-CDB-LMS	Lock monitor & strike monitor	\$1002	\$991	\$991	\$862	\$1002	\$759	\$862
1600-CDB-DLMS	Dual lock monitors & strike monitor	\$1107	\$1096	\$1096	\$967	\$1107	\$864	\$967

## 1600CS Series™ Complete Pacs for Latchbolts & Deadbolts

MODEL	DESCRIPTION	605	606	612	613E	629	630	BSP
1600-CS		\$1050	\$1042	\$1042	\$829	\$1050	\$688	\$829
1600-CS-LM	Lock monitor	\$1155	\$1147	\$1147	\$934	\$1155	\$793	\$934
1600-CS-DLM	Dual lock monitors	\$1260	\$1252	\$1252	\$1039	\$1260	\$898	\$1039
1600-CS-LMS	Lock monitor & strike monitor	\$1170	\$1162	\$1162	\$949	\$1170	\$808	\$949
1600-CS-DLMS	Dual lock monitors & strike monitor	\$1275	\$1267	\$1267	\$1054	\$1275	\$913	\$1054

## 1600 Electric Strike Bodies

MODEL	DESCRIPTION	605	606	612	613E	629	630	BSP
1600		\$714	\$700	\$700	\$655	\$714	\$590	\$655
1600-LM	Lock monitor	\$819	\$805	\$805	\$760	\$819	\$695	\$760
1600-DLM	Dual lock monitors	\$924	\$910	\$910	\$865	\$924	\$800	\$865
1600-LMS	Lock monitor & strike monitor	\$834	\$820	\$820	\$775	\$834	\$710	\$775
1600-DLMS	Dual lock monitors & strike monitor	\$939	\$925	\$925	\$880	\$939	\$815	\$880

## 1600 Faceplates

MODEL	DESCRIPTION	605	606	612	613E	629	630	BSP
1LB		\$168	\$171	\$171	\$87	\$168	\$51	\$87
1LB-2		\$231	\$144	\$144	\$122	\$231	\$85	\$122
1DB		\$168	\$171	\$171	\$87	\$168	\$51	\$87
1DB-2		\$231	\$144	\$144	\$122	\$231	\$85	\$122

## 1600 Accessories

MODEL	DESCRIPTION	605	606	612	613E	629	630	BSP
1600-104	1600 Lip extension trim adapter	\$114	\$107	\$107	\$91	\$114	\$50	\$91
1600-106	1600 adapter and trim enhancer kit	\$106	\$100	\$100	\$84	\$106	\$43	\$84

## Accessories

ITEM	DESCRIPTION	PRICE
OPT-1SRK	Optional spring replacement kit	\$54
OPT-1LM	Optional upgrade kit includes single lock monitor	\$125
OPT-1DLM	Optional kit includes dual lock monitors	\$250
MOD-1SOL	Solenoid replacement module	\$339

## How to Order Specify quantity and the following information. Order related products separately.

SERIES	MODEL	FINISH	OPTION(S)*
1600	– CS	– 630	– LM
1600 Universal Electric Strike; Faceplate option kits ordered separately	CS Complete Electric Strike; includes 1LB faceplate kit for latchbolts and 1DB faceplate kit for deadbolts	605 Bright Brass	LM Lock Monitor
	CLB Complete Electric Strike for Latchbolt Locks; includes 1LB faceplate kit for latchbolts	606 Satin Brass	DLM Dual Lock Monitor
		612 Satin Bronze	LMS Lock Monitor and Strike Monitor
	CDB Complete Electric Strike for Deadbolt Locks; includes 1DB faceplate kit for deadbolts	613E Dark Oxidized Satin Bronze Powder	DLMS Dual Lock Monitors and Strike Monitor
		629 Bright Stainless Steel	
		630 Satin Stainless Steel	
	BSP Black Suede Powder		

\*LMS/DLMS factory installed only option.



h.e.s.

ASSA ABLOY

### ES100-15 Aperio® Wireless Electric Strike with Card Reader Kits

MODEL	DESCRIPTION	630
ES100-15LH	Aperio® 1500 Wireless Electric Strike 1:1 Kit Latchbolts	\$1737
ES100-15LMH	Aperio® 1500 Monitored Wireless Electric Strike 1:1 Kit Latchbolts	\$1842

### 1500 Faceplates

MODEL	605	606	612	613E	629	630	BSP
1LB	\$168	\$171	\$171	\$87	\$168	\$51	\$87
1LB-2	\$231	\$144	\$144	\$122	\$231	\$85	\$122

### 1500 Accessories

MODEL	DESCRIPTION	605	606	612	613E	629	630	BSP
1500-104	Lip extension trim adapter	\$114	\$107	\$107	\$91	\$114	\$50	\$91
1500-106	4500 filler plates and trim enhancer kit	\$106	\$100	\$100	\$84	\$106	\$43	\$84

### ES100-15 Demo Mounts

ITEM	DESCRIPTION	PRICE
DEMO-ES100-15L-IPS-BSP	ES100-15 Aperio™ Wireless Electric Strike Demo Mount For Latchbolts With Black Suede Powdercoat Finish and HID multiCLASS SE Card Reader, HID NFC Mobile Access Enabled	\$1260

### ES100-16 Aperio® Wireless Electric Strike with Card Reader Kits

MODEL	DESCRIPTION	630
ES100-16LH	Aperio® 1600 Wireless Electric Strike 1:1 Kit Latchbolts	\$1737
ES100-16LMH	Aperio® 1600 Monitored Wireless Electric Strike 1:1 Kit Latchbolts	\$1842
ES100-16SH	Aperio® 1600 Wireless Electric Strike 1:1 Kit Latchbolts and Deadbolts	\$1786
ES100-16SMH	Aperio® 1600 Monitored Wireless Electric Strike 1:1 Kit Latchbolts and Deadbolts	\$1891

### 1600 Faceplates

MODEL	605	606	612	613E	629	630	BSP
1LB	\$168	\$171	\$171	\$87	\$168	\$51	\$87
1LB-2	\$231	\$144	\$144	\$122	\$231	\$85	\$122
1DB	\$168	\$171	\$171	\$87	\$168	\$51	\$87
1DB-2	\$231	\$144	\$144	\$122	\$231	\$85	\$122

### 1600 Accessories

MODEL	DESCRIPTION	605	606	612	613E	629	630	BSP
1600-104	1600 Lip extension trim adapter	\$114	\$107	\$107	\$91	\$114	\$50	\$91
1600-106	1600 adapter and trim enhancer kit	\$106	\$100	\$100	\$84	\$106	\$43	\$84

### ES100 Accessories

ITEM	DESCRIPTION	PRICE
OPT-1SRK	Optional spring replacement kit	\$54
OPT-1LM	Optional upgrade kit includes single lock monitor	\$125
EXT-10-ANT	ASSA ABLOY Aperio™ Wireless Hub External Antenna (3, 9 DBi Omni-Directional)	\$72



### How to Order *Specify quantity and the following information. Order related products separately.*

PRODUCT FAMILY	COMMUNICATION	MODEL SERIES	FACEPLATES	OPTIONS	CARD TECHNOLOGY	STRIKE FINISH
ES	100	- 15	L	H	-IPS	- 630
Electric Strike	100 Aperio Wireless	15 Reader and 1500 Strike 16 Reader and 1600 Strike	L Complete Pac for Latchbolts S* Complete Pac for Latchbolts and Deadbolts	H** Wholesale Kit MH** Wholesale Kit with Monitoring for High Security	IPS RFID (HID multiCLASS SE)	630 Satin Stainless Steel

\*Available with 1600 Only. \*\*Only available with L or S Complete Pac Options in 630 Finish.

**HES ES100:** The HES ES100 Electric Strike is available as either a pre-paired lock and hub kit (no certification required) or as a field configurable component (requires Aperio® Certified Integrator certification). Pre-paired kits support limited features. Field configured devices are required in order to support all options. Visit [IntelligentOpenings.com](http://IntelligentOpenings.com) to learn more.



## 4500C Complete Pacs for Latchbolt Locks

MODEL	DESCRIPTION	605	606	612	613	629	630
<b>4500C</b>		\$900	\$884	\$884	\$842	\$900	\$750
<b>4500C-LBM</b>	Latchbolt monitor	\$1030	\$1014	\$1014	\$972	\$1030	\$880
<b>4500C-LBSM</b>	Latchbolt strike monitor	\$1050	\$1034	\$1034	\$992	\$1050	\$900

## Accessories

ITEM	DESCRIPTION	PRICE
<b>4500-105</b>	Trim enhancer (BLK)	\$41
<b>4500-110</b>	Replacement strike plate	\$126
<b>4500-131</b>	Filler block	\$53
<b>4501-1/2</b>	1/2" stackable lip extension	\$70
<b>4501-1</b>	1" stackable lip extension	\$77



## How to Order *Specify quantity and the following information. Order related products separately.*

SERIES	FINISH*	OPTION(S)
<b>4500C</b>	<b>- 630</b>	<b>- LBM</b>
<b>4500C</b> Complete Electric Strike; includes faceplates for cylindrical and mortise locks	<b>605</b> Bright Brass	<b>LBM</b> Latchbolt Monitor
	<b>606</b> Satin Brass	<b>LBSM</b> Latchbolt Strike Monitor
	<b>612</b> Satin Bronze	
	<b>613</b> Bronze Toned	
	<b>629</b> Bright Stainless Steel	
	<b>630</b> Satin Stainless Steel	

### 5000C, 5200C, 5300C Complete Pacs for Latchbolt Locks

MODEL	DESCRIPTION	630
5000C		\$224
5000C-LBM	Latchbolt monitor	\$314
5200C		\$234
5200C-LBM	Latchbolt monitor	\$324
5200C-LBSM	Latchbolt strike monitor	\$344
5300C		\$445
5300C-LBM	Latchbolt Monitor	\$535

### 5000, 5200, 5300 Electric Strike Bodies

MODEL	DESCRIPTION	630
5000		\$199
5000-LBM	Latchbolt monitor	\$289
5200		\$209
5200-LBM	Latchbolt monitor	\$299
5200-LBSM	Latchbolt strike monitor	\$319
5300		\$420
5300-LBM	Latchbolt Monitor	\$509



### Faceplates

MODEL	605	606	612	613	629	630	BSP
501	\$78	\$57	\$57	\$48	\$78	\$23	\$48
501A	\$84	\$60	\$60	\$53	\$84	\$28	\$53
502	\$101	\$83	\$83	\$69	\$101	\$49	\$69
503	\$101	\$83	\$83	\$69	\$101	\$49	\$69
504	\$101	\$83	\$83	\$69	\$101	\$49	\$69

### Accessories

ITEM	DESCRIPTION	PRICE
5000-105	Trim enhancer (goof plate)	\$35
5104-1/2	1/2" stackable lip extension	\$60
5104-1	1" stackable lip extension	\$68
5104-1-1/4	1-1/4" stackable lip extension	\$70
5200 105	Trim enhancer (goof plate)	\$35
5200-500	Filler block	\$77
5204-1/2	1/2" stackable lip extension	\$60
5204-1	1" stackable lip extension	\$68
5204-1-1/4	1-1/4" stackable lip extension	\$70

### How to Order Specify quantity and the following information. Order related products separately.

SERIES	MODEL	FINISH*	OPTION(S)*
<b>5000</b>	<b>–</b>	<b>– 630</b>	<b>– LBM</b>
5000, 5200, 5300	C* Complete Electric Strike; includes the 501 and 501A faceplates	630 Satin Stainless Steel	LBM Latchbolt Monitor LBSM** Latchbolt Strike Monitor

\*Complete Pacs are only available in the 630 finish. \*\*LBSM only available with 5200.

FACEPLATE OPTIONS	FINISH
<b>502</b>	<b>– 613E</b>
For Cylindrical Locksets (ANSI Metal)	605 Bright Brass
501 Option 4-7/8" x 1-1/4"	606 Satin Brass
For Cylindrical Locksets (Aluminum)	612 Satin Bronze
501A Option 4-7/8" x 1-1/4"	613E Dark Oxidized Satin Brass
502 Option 7-15/16" x 1-7/16"	629 Bright Stainless Steel
503 Option 6-7/8" x 1-1/4"	630 Satin Stainless Steel
For Cylindrical Locksets (Wood)	BSP Black Suede Powder
504 Option 10" x 1-3/8"	

## 7000C Complete Pacs for Latchbolt Locks

MODEL	DESCRIPTION	630
7000C		\$380
7000C-LBM	Latchbolt monitor	\$500

## 7000 Electric Strike Bodies

MODEL	DESCRIPTION	630
7000		\$310
7000-LBM	Latchbolt monitor	\$430

## Faceplates

MODEL	605	606	612	613E	629	630	BLK
791	\$122	\$104	\$104	\$89	\$122	\$68	\$89
792	\$122	\$104	\$104	\$89	\$122	\$68	\$89
783S				\$261		\$183	
786S				\$296		\$203	
789S				\$296		\$203	



## Accessories

ITEM	DESCRIPTION	PRICE
7000-104	Lip extension trim adapter (791 & 792 options only)	\$37
7000-105	Trim enhancer (goof plate) (791 & 792 options only)	\$37
7000-106	Keeper pocket adapter (783S & 789S options only)	\$36
7000-107	Full keeper shim pack	\$21
7000-108	Spacer plate (783S & 789S options, black finish only)	\$40
7000-110	Replacement strike plate (791 and 792 option)	\$125
SMB	Surface mounting box	\$239

## How to Order Specify quantity and the following information. Order related products separately.

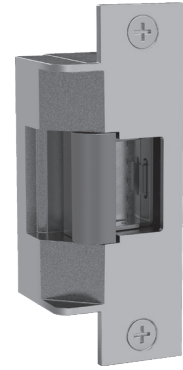
SERIES	MODEL	FINISH*	OPTION(S)
7000	—	– 630	– LBM
7000 Universal Electric Strike; faceplates ordered separately	C* Complete Electric Strike; includes the 791 and 792 faceplates (blank) Strike Body Only	630 Satin Stainless Steel	blank No Monitor LBM Latchbolt Monitor

\*Complete Pacs are only available in 630 finish.

FACEPLATE OPTIONS	FINISH
792	– 606
<b>For Cylindrical Locksets</b>	605 Bright Brass
791 Option 4-7/8" x 1-1/4"	606 Satin Brass
792 Option 7-15/16" x 1-7/16"	612 Satin Bronze
<b>For Rim Exit Devices</b>	613E Dark Oxidized Satin Brass
783S Option 9" x 1-3/4" x 11/16"	629 Bright Stainless Steel
786S Option 6-1/2" x 1-3/4" x 1/2"	630 Satin Stainless Steel
789S Option 9" x 1-3/4" x 1/2"	BLK Black

### 7501 Electric Strike

MODEL	DESCRIPTION	605	606	612	613	629	630
7501		\$834	\$816	\$816	\$800	\$834	\$730
7501-LBM	Latchbolt monitor	\$954	\$936	\$936	\$920	\$954	\$850



**How to Order** Specify quantity and the following information. Order related products separately.

SERIES	FINISH*	OPTION(S)
<b>7501</b>	<b>– 630</b>	<b>– LBM</b>
7501 Universal Electric Strike; includes faceplate for cylindrical locksets	605 Bright Brass 606 Satin Brass 612 Satin Bronze 613 Bronze Toned 629 Bright Stainless Steel 630 Satin Stainless Steel	LBM Latchbolt Monitor

### 8000C, 8300C Complete Pac for Latchbolt Locks

MODEL	DESCRIPTION	630
8000C		\$275
8000C-LBM	Latchbolt monitor	\$385
8300C		\$604
8300C-LBM	Latchbolt monitor	\$714



### 8000, 8300 Electric Strike Bodies

MODEL	DESCRIPTION	630
8000		\$240
8000-LBM	Latchbolt monitor	\$350
8300		\$592
8300-LBM	Latchbolt monitor	\$702

### Faceplates

MODEL	605	606	612	613	629	630	BLK
801	\$95	\$77	\$77	\$62	\$95	\$34	\$58
801A	\$101	\$83	\$83	\$67	\$101	\$42	\$63
801E	\$95	\$77	\$77	\$62	\$95	\$35	\$58
802	\$118	\$97	\$97	\$84	\$118	\$55	\$87
803	\$118	\$97	\$97	\$84	\$118	\$55	\$79
805	\$118	\$97	\$97	\$84	\$118	\$55	\$79

**How to Order** Specify quantity and the following information. Order related products separately.

SERIES	MODEL	FINISH*	OPTION(S)
<b>8000</b>	<b>—</b>	<b>– 630</b>	<b>– LBM</b>
8000, 8300 Universal Electric Strike; faceplates ordered separately	C Complete Electric Strike; includes the 801 and 801A faceplates (blank) Strike Body Only	630 Satin Stainless Steel	LBM Latchbolt Monitor

\*Complete Pacs are only available in 630 finish.

FACEPLATE OPTIONS	FINISH
<b>801</b>	<b>– 613E</b>
For Cylindrical Locksets (ANSI Metal)	605 Bright Brass
801 Option 4-7/8" x 1-1/4"	606 Satin Brass
For Cylindrical Locksets (Aluminum)	612 Satin Bronze
801A Option 4-7/8" x 1-1/4"	613E Dark Oxidized Satin Brass
802 Option 7-15/16" x 1-7/16"	629 Bright Stainless Steel
803 Option 6-7/8" x 1-1/4"	630 Satin Stainless Steel
For Cylindrical Locksets (Wood)	BLK Black
804 Option 10" x 1-3/8"	

### 8500 Electric Strike Bodies

MODEL	DESCRIPTION	605	606	612	613	629	630
<b>8500</b>		\$710	\$695	\$695	\$695	\$710	\$600
<b>8500-LBM</b>	Latchbolt monitor	\$830	\$815	\$815	\$815	\$830	\$720
<b>8500-LBSM</b>	Latchbolt strike monitor	\$850	\$835	\$835	\$835	\$850	\$740



### Faceplates

MODEL	605	606	612	613	629	630
<b>851M</b>	\$108	\$88	\$88	\$77	\$108	\$47
<b>852K</b>	\$108	\$88	\$88	\$77	\$108	\$47
<b>852L</b>	\$108	\$88	\$88	\$77	\$108	\$47
<b>852M</b>	\$108	\$88	\$88	\$77	\$108	\$47

### How to Order Specify quantity and the following information. Order related products separately.

SERIES	FINISH*	OPTION(S)
<b>8500</b>	<b>- 630</b>	<b>- LBM</b>
<b>8500</b> Universal Electric Strike; faceplates ordered separately	<b>605</b> Bright Brass <b>606</b> Satin Brass <b>612</b> Satin Bronze <b>613</b> Bronze Toned <b>629</b> Bright Stainless Steel <b>630</b> Satin Stainless Steel	<b>LBM</b> Latchbolt Monitor <b>LBSM</b> Latchbolt Strike Monitor

### Securitron UNL Electric Strike for Latchbolt Locks

ITEM	DESCRIPTION	PRICE
<b>UNL-12</b>	UnLatch for Cylindrical Locks - 12VDC	\$601
<b>UNL-24</b>	UnLatch for Cylindrical Locks - 24VDC	\$601
<b>UNL-12-10B</b>	UnLatch - 12VDC, Oil Rubbed Bronze	\$669
<b>UNL-24-10B</b>	UnLatch - 24VDC, Oil Rubbed Bronze	\$669

### Securitron MUNL Electric Strike for Latchbolt Locks

ITEM	DESCRIPTION	PRICE
<b>MUNL-12</b>	12VDC	\$837
<b>MUNL-24</b>	24VDC	\$837
<b>MUNL-12-10B</b>		\$899
<b>MUNL-24-10B</b>		\$899
<b>MUNL-12-US3</b>		\$857
<b>MUNL-24-US3</b>		\$857



### Accessories

ITEM	DESCRIPTION	PRICE
<b>FSUNL-12</b>	Fail Safe/Fail Secure UnLatch Module, 12 VDC	\$162
<b>FSUNL-24</b>	Fail Safe/Fail Secure UnLatch Module, 24 VDC	\$162

### How to Order Specify quantity and the following information. Order related products separately.

SERIES	FAIL SAFE/SECURE	VOLTAGE	FINISH
<b>MUNL</b>	<b>—</b>	<b>- 24</b>	<b>- 10B</b>
<b>UNL</b> Cylindrical	<b>(blank)</b> Fail Secure (Standard)	<b>12</b> 12 Volt	<b>(blank)</b> Stainless Steel
<b>MUNL</b> Mortise	Note: <b>FSUNL</b> for field-selectable fail safe operation ordered separately	<b>24</b> 24 Volt	<b>10B</b> Oil Rubbed Bronze <b>US3</b> Bright Brass

## 9400, 9500, 9600, 9700, 9800

### Surface Mounted Electric Strikes for Rim Exit Devices

MODEL	DESCRIPTION	605	606	612	613	613E	628E	629	630	BSP
<b>9400</b>		\$709	\$695	\$695	\$709	\$650		\$709	\$575	\$650
<b>9400-LBM</b>	Latchbolt monitor	\$829	\$815	\$815	\$829	\$770		\$829	\$695	\$770
<b>9400-LBSM</b>	Latchbolt strike monitor	\$844	\$830	\$830	\$844	\$785		\$844	\$710	\$785
<b>9500</b>		\$809	\$795	\$795	\$809	\$750		\$809	\$675	\$750
<b>9500-LBM</b>	Latchbolt monitor	\$929	\$915	\$915	\$929	\$870		\$929	\$795	\$870
<b>9500-LBSM</b>	Latchbolt strike monitor	\$944	\$930	\$930	\$944	\$885		\$944	\$810	\$885
<b>9600</b>		\$709	\$695	\$695	\$709	\$650		\$709	\$575	\$650
<b>9600-LBM</b>	Latchbolt monitor	\$829	\$815	\$815	\$829	\$770		\$829	\$695	\$770
<b>9600-LBSM</b>	Latchbolt strike monitor	\$844	\$830	\$830	\$844	\$785		\$844	\$710	\$785
<b>9700</b>		\$829	\$815	\$815	\$829	\$770		\$829	\$695	\$770
<b>9700-LBM</b>	Latchbolt monitor	\$949	\$935	\$935	\$949	\$890		\$949	\$815	\$890
<b>9700-LBSM</b>	Latchbolt strike monitor	\$964	\$950	\$950	\$964	\$905		\$964	\$830	\$905
<b>9800</b>		\$829	\$815			\$770	\$770	\$829	\$695	\$770



### Accessories

ITEM	DESCRIPTION	PRICE
<b>9000-MTK</b>	Metal template installation kit	\$89
<b>SMB</b>	Surface mounting box	\$239

### Spacer Plates/ Brackets

MODEL	DESCRIPTION	613E	628	628E	630	BSP
<b>9000-108</b>	1/8" Spacer plate	\$53		\$53	\$38	\$53
<b>9000-116</b>	1/16" Spacer plate	\$53		\$53	\$38	\$53
<b>9000-ASB</b>	Aluminum spacer bracket	\$125	\$114			\$125

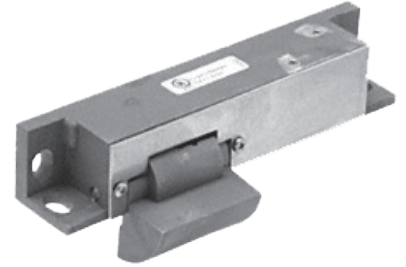
### How to Order *Specify quantity and the following information. Order related products separately.*

SERIES	FINISH	OPTION(S)
<b>9600</b>	<b>- 630</b>	<b>- LBM</b>
<b>9400</b> Surface Mounted Electric Strike for 1/2" Pullman Exit Device; no faceplates required	<b>605</b> Bright Brass <b>606</b> Satin Brass	<b>LBM</b> Latchbolt Monitor <b>LBSM</b> Latchbolt Strike Monitor
<b>9500</b> Surface Mounted Electric Strike for 3/4" Pullman, fire rated; no faceplates required	<b>612</b> Satin Bronze <b>613</b> Bronze Toned	
<b>9600</b> Surface Mounted Electric Strike for 3/4" Pullman Rim Exit Devices, non-fire rated; no faceplates required	<b>613E</b> Dark Oxidized Satin Bronze <b>629</b> Bright Stainless Steel	
<b>9700</b> Surface Mounted Electric Strike for Corbin Russwin SecureBolt® and Yale SquareBolt® Rim Exit Devices; no faceplates required	<b>628E*</b> Satin Aluminum Powder <b>630</b> Satin Stainless Steel	
<b>9800</b> Surface Mounted Electric Strike for Adams Rite® Starwheel and Interlocking Rim Exit Devices; no faceplates required	<b>BSP</b> Black Suede Powder	

\*Only Available on 9800

## Folger Adam SB:310-1(1/2) Electric Strike Bodies

ITEM	DESCRIPTION	PRICE
SB:310-1(1/2)-12D		\$710
SB:310-1(1/2)-24D		\$710
SB:310-1(1/2)-F-12D	Fail safe	\$710
SB:310-1(1/2)-F-24D	Fail safe	\$710
SB:310-1(1/2)-12D-LCBMA		\$890
SB:310-1(1/2)-24D-LCBMA		\$890
SB:310-1(1/2)-F-12D-LCBMA	Fail safe	\$890
SB:310-1(1/2)-F-24D-LCBMA	Fail safe	\$890



## Folger Adam SB:310-1(3/4) Electric Strike Bodies

ITEM	DESCRIPTION	PRICE
SB:310-1(3/4)-12D		\$710
SB:310-1(3/4)-24D		\$710
SB:310-1(3/4)-F-12D	Fail safe	\$710
SB:310-1(3/4)-F-24D	Fail safe	\$710
SB:310-1(3/4)-12D-LCBMA		\$890
SB:310-1(3/4)-24D-LCBMA		\$890
SB:310-1(3/4)-F-12D-LCBMA	Fail safe	\$890
SB:310-1(3/4)-F-24D-LCBMA	Fail safe	\$890

## Folger Adam SB:310-1(1) Electric Strike Bodies

ITEM	DESCRIPTION	PRICE
SB:310-1(1)-12D		\$710
SB:310-1(1)-24D		\$710
SB:310-1(1)-F-12D	Fail safe	\$710
SB:310-1(1)-F-24D	Fail safe	\$710
SB:310-1(1)-12D-LCBMA		\$890
SB:310-1(1)-24D-LCBMA		\$890
SB:310-1(1)-F-12D-LCBMA	Fail safe	\$890
SB:310-1(1)-F-24D-LCBMA	Fail safe	\$890

## Folger Adam SB:310-1(PK) Electric Strike Bodies

ITEM	DESCRIPTION	PRICE
SB:310-1(PK)-12D		\$710
SB:310-1(PK)-24D		\$710
SB:310-1(PK)-F-12D	Fail safe	\$710
SB:310-1(PK)-F-24D	Fail safe	\$710
SB:310-1(PK)-12D-LCBMA		\$890
SB:310-1(PK)-24D-LCBMA		\$890
SB:310-1(PK)-F-12D-LCBMA	Fail safe	\$890
SB:310-1(PK)-F-24D-LCBMA	Fail safe	\$890

## Folger Adam SB:310-1(SK) Electric Strike Bodies

ITEM	DESCRIPTION	PRICE
SB:310-1(SK)-12D		\$738
SB:310-1(SK)-24D		\$738
SB:310-1(SK)-F-12D	Fail safe	\$738
SB:310-1(SK)-F-24D	Fail safe	\$738
SB:310-1(SK)-12D-LCBMA		\$918
SB:310-1(SK)-24D-LCBMA		\$918
SB:310-1(SK)-F-12D-LCBMA	Fail safe	\$918
SB:310-1(SK)-F-24D-LCBMA	Fail safe	\$918

### How to Order Specify quantity and the following information. Order related products separately.

PREFIX	SERIES	KEEPER STYLE	FAIL SAFE/SECURE	VOLTAGE	OPTION(S)
SB	310-1	(3/4)	- F	- 24D	- LCBMA
<b>Strike BODY ONLY</b>					
SB Strike Body	310-1 Strike Body Only	(1/2) 1/2" keeper (3/4) 3/4" keeper (1) 1" keeper (PK) For use with 3/4" Pullman style latchbolts (SK) For use with Squarebolt® style rim exit devices	(blank) Fail Secure (Standard) F Fail Safe	12D 12 Volt 24D 24 Volt	LCBMA Latchbolt & locking cam monitor with auxiliary switch



### Folger Adam 310-2 Electric Strike for Latchbolt Locks

MODEL	DESCRIPTION	605	606	612	613	629	630
310-2-12D		\$1053	\$1011	\$1011	\$954	\$1053	\$905
310-2-24D		\$1053	\$1011	\$1011	\$954	\$1053	\$905
310-2-F-12D	Fail safe	\$1053	\$1011	\$1011	\$954	\$1053	\$905
310-2-F-24D	Fail safe	\$1053	\$1011	\$1011	\$954	\$1053	\$905
310-2-12D-LCBMA		\$1233	\$1190	\$1190	\$1145	\$1233	\$1084
310-2-24D-LCBMA		\$1233	\$1190	\$1190	\$1145	\$1233	\$1084
310-2-F-12D-LCBMA	Fail safe	\$1233	\$1190	\$1190	\$1145	\$1233	\$1084
310-2-F-24D-LCBMA	Fail safe	\$1233	\$1190	\$1190	\$1145	\$1233	\$1084

### Folger Adam 310-2 3/4 Electric Strike for Latchbolt Locks

MODEL	DESCRIPTION	605	606	612	613	629	630
310-2 3/4-12D		\$1165	\$1126	\$1126	\$1082	\$1163	\$1032
310-2 3/4-24D		\$1165	\$1126	\$1126	\$1082	\$1163	\$1032
310-2 3/4-F-12D	Fail safe	\$1165	\$1126	\$1126	\$1082	\$1163	\$1032
310-2 3/4-F-24D	Fail safe	\$1165	\$1126	\$1126	\$1082	\$1163	\$1032
310-2 3/4-12D-LCBMA		\$1359	\$1306	\$1306	\$1259	\$1342	\$1211
310-2 3/4-24D-LCBMA		\$1359	\$1306	\$1306	\$1259	\$1342	\$1211
310-2 3/4-F-12D-LCBMA	Fail safe	\$1359	\$1306	\$1306	\$1259	\$1342	\$1211
310-2 3/4-F-24D-LCBMA	Fail safe	\$1359	\$1306	\$1306	\$1259	\$1342	\$1211

### Folger Adam 310-2 3/4OB Electric Strike for Latchbolt Locks

MODEL	DESCRIPTION	605	606	612	613	629	630
310-2 3/4OB-12D		\$1427	\$1386	\$1386	\$1344	\$1427	\$1278
310-2 3/4OB-24D		\$1427	\$1386	\$1386	\$1344	\$1427	\$1278
310-2 3/4OB-F-12D	Fail safe	\$1427	\$1386	\$1386	\$1344	\$1427	\$1278
310-2 3/4OB-F-24D	Fail safe	\$1427	\$1386	\$1386	\$1344	\$1427	\$1278

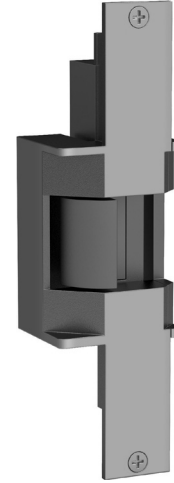
### Folger Adam 310-3-1 Electric Strike for Latchbolt Locks & Deadbolts

MODEL	DESCRIPTION	605	606	612	613	629	630
310-3-1-12D		\$1366	\$1345	\$1345	\$1299	\$1366	\$1294
310-3-1-24D		\$1366	\$1345	\$1345	\$1299	\$1366	\$1294
310-3-1-F-12D	Fail safe	\$1366	\$1345	\$1345	\$1299	\$1366	\$1294
310-3-1-F-24D	Fail safe	\$1366	\$1345	\$1345	\$1299	\$1366	\$1294
310-3-1-12D-LCBMA		\$1557	\$1524	\$1524	\$1481	\$1557	\$1473
310-3-1-24D-LCBMA		\$1557	\$1524	\$1524	\$1481	\$1557	\$1473
310-3-1-F-12D-LCBMA	Fail safe	\$1557	\$1524	\$1524	\$1481	\$1557	\$1473
310-3-1-F-24D-LCBMA	Fail safe	\$1557	\$1524	\$1524	\$1481	\$1557	\$1473

### How to Order *Specify quantity and the following information. Order related products separately.*

SERIES	FAIL SAFE/SECURE	VOLTAGE	FINISH	OPTION(S)
310-2	- F	- 24D	- 613	- LCBMA
<b>KEEPER STYLE</b>				
310-2 1/2" keeper standard; for up to a 5/8" throw latchbolt	(blank) Fail Secure (Standard)	12D 12 Volt 24D 24 Volt	605 Bright Brass 606 Satin Brass 612 Satin Bronze 613 Bronze Toned 629 Bright Stainless Steel 630 Satin Stainless Steel	LCBMA* Latchbolt & locking cam monitor with auxiliary switch
310-2 3/4 3/4" keeper standard; for up to a 3/4" throw latchbolt without deadbolt	F Fail Safe			
310-2 3/4OB* 3/4" keeper standard; for a pair of doors without a door coordinator				
310-3-1 1" keeper standard; for up to a 3/4" throw latchbolt and a 1" deadbolt				

\*LCBMA not available with 310-2 3/4OB.



### Faceplates

MODEL	605	606	612	613	629	630
FP-310-2	\$338	\$294	\$294	\$250	\$338	\$200

### Faceplates

MODEL	605	606	612	613	629	630
FP-310-2-34	\$463	\$425	\$425	\$378	\$461	\$328

### Faceplates

MODEL	605	606	612	613	629	630
FP-310-2-34OB	\$714	\$675	\$681	\$631	\$714	\$576

### Faceplates

MODEL	605	606	612	613	629	630
FP-310-3-1	\$667	\$633	\$633	\$589	\$667	\$595

### How to Order

PREFIX	SERIES	FINISH
FP	- 310-2 3/4OB	- 630
<b>FACEPLATE ONLY</b>		
FP Faceplate	310-2 1/2" keeper standard; for up to a 5/8" throw latchbolt	605 Bright Brass 606 Satin Brass
	310-2 3/4 3/4" keeper standard; for up to a 3/4" throw latchbolt without deadbolt	612 Satin Bronze 613 Bronze Toned
	310-2 3/4OB 3/4" keeper standard; for a pair of doors without a door coordinator	629 Bright Stainless Steel 630 Satin Stainless Steel
	310-3-1 1" keeper standard; for up to a 3/4" throw latchbolt and a 1" deadbolt	



## Folger Adam 310-4 Electric Strike for Pullman Rim Exit Devices

MODEL	DESCRIPTION	605	606	612	613	629	630
310-4-12D		\$1088	\$1047	\$1047	\$998	\$1088	\$947
310-4-24D		\$1088	\$1047	\$1047	\$998	\$1088	\$947
310-4-F-12D	Fail safe	\$1088	\$1047	\$1047	\$998	\$1088	\$947
310-4-F-24D	Fail safe	\$1088	\$1047	\$1047	\$998	\$1088	\$947
310-4-12D-LCBMA		\$1275	\$1225	\$1225	\$1176	\$1275	\$1124
310-4-24D-LCBMA		\$1275	\$1225	\$1225	\$1176	\$1275	\$1124
310-4-F-12D-LCBMA	Fail safe	\$1275	\$1225	\$1225	\$1176	\$1275	\$1124
310-4-F-24D-LCBMA	Fail safe	\$1275	\$1225	\$1225	\$1176	\$1275	\$1124

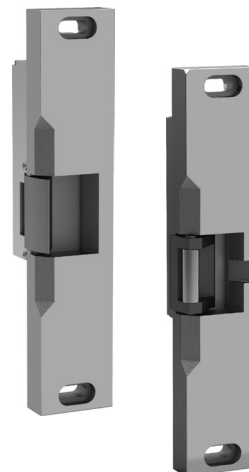
## Folger Adam 310-4(S) Electric Strike for Squarebolt® Rim Exit Device

MODEL	DESCRIPTION	605	606	612	613	629	630
310-4(S)-12D		\$1140	\$1101	\$1101	\$1055	\$1140	\$1005
310-4(S)-24D		\$1140	\$1101	\$1101	\$1055	\$1140	\$1005
310-4(S)-F-12D	Fail safe	\$1140	\$1101	\$1101	\$1055	\$1140	\$1005
310-4(S)-F-24D	Fail safe	\$1140	\$1101	\$1101	\$1055	\$1140	\$1005
310-4(S)-12D-LCBMA		\$1332	\$1293	\$1293	\$1244	\$1332	\$1184
310-4(S)-24D-LCBMA		\$1332	\$1293	\$1293	\$1244	\$1332	\$1184
310-4(S)-F-12D-LCBMA	Fail safe	\$1332	\$1293	\$1293	\$1244	\$1332	\$1184
310-4(S)-F-24D-LCBMA	Fail safe	\$1332	\$1293	\$1293	\$1244	\$1332	\$1184

### How to Order Specify quantity and the following information. Order related products separately.

SERIES	FAIL SAFE/SECURE	VOLTAGE	FINISH	OPTION(S)
310-4 (S)	- F	- 24D	- 613	- LCBMA
<b>KEEPER STYLE</b>				
310-4 PK keeper standard; for use with 3/4" Pullman style latchbolts	(blank) Fail Secure (Standard) F Fail Safe	12D 12 Volt 24D 24 Volt	605 Bright Brass 606 Satin Brass 612 Satin Bronze 613 Bronze Toned 629 Bright Stainless Steel 630 Satin Stainless Steel	LCBMA* Latchbolt & locking cam monitor with auxiliary switch
310-4(S) SK keeper standard; for use with Squarebolt® style rim exit devices				

\*LCBMA not available with 310-2 3/4OB.



### Faceplates

MODEL	605	606	612	613	629	630
FP-310-4	\$384	\$343	\$343	\$292	\$384	\$240

### Faceplates

MODEL	605	606	612	613	629	630
FP-310-4-SK	\$419	\$383	\$383	\$334	\$419	\$281

### How to Order

PREFIX	SERIES	KEEPER STYLE	FINISH
FP	- 310-4	(SK)	- 630
<b>FACEPLATE ONLY</b>			
FP Faceplate	310-4	(Blank) Keeper standard; for use with 3/4" Pullman style latchbolts (SK) For use with Squarebolt® style rim exit devices	605 Bright Brass 606 Satin Brass 612 Satin Bronze 613 Bronze Toned 629 Bright Stainless Steel 630 Satin Stainless Steel



## Folger Adam 310-4-1

### Electric Strike for Surface Vertical Rods

MODEL	DESCRIPTION	605	606	612	613	629	630
310-4-1-12D		\$1845	\$1798	\$1798	\$1770	\$1845	\$1770
310-4-1-24D		\$1845	\$1798	\$1798	\$1770	\$1845	\$1770
310-4-1-F-12D	Fail safe	\$1845	\$1798	\$1798	\$1770	\$1845	\$1770
310-4-1-F-24D	Fail safe	\$1845	\$1798	\$1798	\$1770	\$1845	\$1770
310-4-1-12D-LCBMA		\$2169	\$2118	\$2118	\$2089	\$2169	\$2089
310-4-1-24D-LCBMA		\$2169	\$2118	\$2118	\$2089	\$2169	\$2089
310-4-1-F-12D-LCBMA	Fail safe	\$2169	\$2118	\$2118	\$2089	\$2169	\$2089
310-4-1-F-24D-LCBMA	Fail safe	\$2169	\$2118	\$2118	\$2089	\$2169	\$2089

## Folger Adam 310-4-2 Electric Strike for Surface Vertical Rods

MODEL	DESCRIPTION	605	606	612	613	629	630
310-4-2-12D		\$1845	\$1798	\$1798	\$1770	\$1845	\$1770
310-4-2-24D		\$1845	\$1798	\$1798	\$1770	\$1845	\$1770
310-4-2-F-12D	Fail safe	\$1845	\$1798	\$1798	\$1770	\$1845	\$1770
310-4-2-F-24D	Fail safe	\$1845	\$1798	\$1798	\$1770	\$1845	\$1770
310-4-2-12D-LCBMA		\$2169	\$2118	\$2118	\$2089	\$2169	\$2089
310-4-2-24D-LCBMA		\$2169	\$2118	\$2118	\$2089	\$2169	\$2089
310-4-2-F-12D-LCBMA	Fail safe	\$2169	\$2118	\$2118	\$2089	\$2169	\$2089
310-4-2-F-24D-LCBMA	Fail safe	\$2169	\$2118	\$2118	\$2089	\$2169	\$2089

## Folger Adam 310-4-3

### Electric Strike for Surface Vertical Rods

MODEL	DESCRIPTION	605	606	612	613	629	630
310-4-3-12D		\$1933	\$1888	\$1888	\$1854	\$1933	\$1854
310-4-3-24D		\$1933	\$1888	\$1888	\$1854	\$1933	\$1854
310-4-3-F-12D	Fail safe	\$1933	\$1888	\$1888	\$1854	\$1933	\$1854
310-4-3-F-24D	Fail safe	\$1933	\$1888	\$1888	\$1854	\$1933	\$1854
310-4-3-12D-LCBMA		\$2253	\$2209	\$2209	\$2173	\$2253	\$2173
310-4-3-24D-LCBMA		\$2253	\$2209	\$2209	\$2173	\$2253	\$2173
310-4-3-F-12D-LCBMA	Fail safe	\$2253	\$2209	\$2209	\$2173	\$2253	\$2173
310-4-3-F-24D-LCBMA	Fail safe	\$2253	\$2209	\$2209	\$2173	\$2253	\$2173

## Folger Adam 310-4-30

### Electric Strike for Surface Vertical Rods

MODEL	DESCRIPTION	605	606	612	613	629	630
310-4-30-12D		\$1933	\$1888	\$1888	\$1854	\$1933	\$1854
310-4-30-24D		\$1933	\$1888	\$1888	\$1854	\$1933	\$1854
310-4-30-F-12D	Fail safe	\$1933	\$1888	\$1888	\$1854	\$1933	\$1854
310-4-30-F-24D	Fail safe	\$1933	\$1888	\$1888	\$1854	\$1933	\$1854
310-4-30-12D-LCBMA		\$2253	\$2209	\$2209	\$2173	\$2253	\$2173
310-4-30-24D-LCBMA		\$2253	\$2209	\$2209	\$2173	\$2253	\$2173
310-4-30-F-12D-LCBMA	Fail safe	\$2253	\$2209	\$2209	\$2173	\$2253	\$2173
310-4-30-F-24D-LCBMA	Fail safe	\$2253	\$2209	\$2209	\$2173	\$2253	\$2173



**INSTALLATION NOTE:** Double-door models are available with four different center-to-center dimensions between latchbolt keepers. Keepers are wide enough to compensate for vertical rod exit bolts, which may be as much as 3/8" (10 mm) off center-to-center dimension, either way. When using an electric strike in conjunction with a vertical rod exit device, it is necessary that:

1. The bottom rod of the exit device be removed or made inoperative
2. The latchbolt of the exit device be the "Pullman" or beveled type
3. The latchbolt be free-latching and remain projected while the door is open. Mechanisms that hold the latchbolt retracted while the door is open, and automatically release it when the door is closed, must be removed or made inoperative.

### Faceplates

MODEL	605	606	612	613	629	630
FP-310-4-1	\$558	\$508	\$508	\$498	\$558	\$498

### Faceplates

MODEL	605	606	612	613	629	630
FP-310-4-2	\$558	\$508	\$508	\$498	\$558	\$498

### Faceplates

MODEL	605	606	612	613	630
FP-310-4-3	\$644	\$597	\$597	\$583	\$583

### Faceplates

MODEL	605	606	612	613	630
FP-310-4-30	\$644	\$597	\$597	\$583	\$583

### How to Order

PREFIX	SERIES	FINISH
FP	- 310-4-X	- 630
<b>FACEPLATE ONLY</b>		
FP Faceplate	<b>1</b> For use with vertical rod spacing between 4" and 4-3/4" <b>2</b> For use with vertical rod spacing between 4-5/8" and 5-3/8" <b>30</b> For use with vertical rod spacing between 2-5/8" and 3-3/8"	<b>605</b> Bright Brass <b>606</b> Satin Brass <b>612</b> Satin Bronze <b>613</b> Bronze Toned <b>629</b> Bright Stainless Steel <b>630</b> Satin Stainless Steel

### How to Order *Specify quantity and the following information. Order related products separately.*

SERIES	FAIL SAFE/SECURE	VOLTAGE	FINISH	OPTION(S)
310-4-X	F	- 24D	- 612	-LCBMA
<b>ROD SPACING</b>				
1 For use with vertical rod spacing between 4" and 4-3/4"	(blank) Fail Secure (Standard)	12D 12 Volt	605 Bright Brass	LCBMA Latchbolt & locking cam monitor with auxiliary switch
2 For use with vertical rod spacing between 4-5/8" and 5-3/8"		24D 24 Volt	606 Satin Brass	
3 For use with vertical rod spacing between 5-1/4" and 6"	F Fail Safe		612 Satin Bronze	
30 For use with vertical rod spacing between 2-5/8" and 3-3/8"			613 Bronze Toned	
			629 Bright Stainless Steel	
			630 Satin Stainless Steel	

## Folger Adam 310-6-1 Electric Strike for Concealed Vertical Rods

MODEL	DESCRIPTION	612	627
310-6-1-12D		\$2080	\$1785
310-6-1-24D		\$2080	\$1785
310-6-1-F-12D	Fail safe	\$2080	\$1785
310-6-1-F-24	Fail safe	\$2080	\$1785
310-6-1-12D-LCBMA		\$2398	\$2122
310-6-1-24D-LCBMA		\$2398	\$2122
310-6-1-F-12D-LCBMA	Fail safe	\$2398	\$2122
310-6-1-F-24D-LCBMA	Fail safe	\$2398	\$2122

## Folger Adam 310-6-2 Electric Strike for Concealed Vertical Rods

MODEL	DESCRIPTION	612	627
310-6-2-12D		\$2080	\$1785
310-6-2-24D		\$2080	\$1785
310-6-2-F-12D	Fail safe	\$2080	\$1785
310-6-2-F-24D	Fail safe	\$2080	\$1785
310-6-2-12D-LCBMA		\$2398	\$2122
310-6-2-24D-LCBMA		\$2398	\$2122
310-6-2-F-12D-LCBMA	Fail safe	\$2398	\$2122
310-6-2-F-24D-LCBMA	Fail safe	\$2398	\$2122

## Folger Adam 310-6-3 Electric Strike for Concealed Vertical Rods

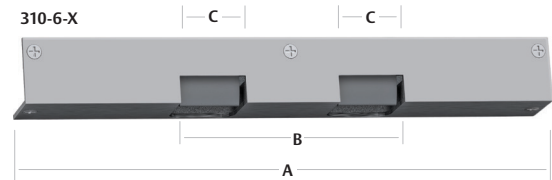
MODEL	DESCRIPTION	612	627
310-6-3-12D		\$2080	\$1785
310-6-3-24D		\$2080	\$1785
310-6-3-F-12D		\$2080	\$1785
310-6-3-F-24D		\$2080	\$1785
310-6-3-12D-LCBMA		\$2398	\$2122
310-6-3-24D-LCBMA		\$2398	\$2122
310-6-3-F-12D-LCBMA		\$2398	\$2122
310-6-3-F-24D-LCBMA		\$2398	\$2122

## Folger Adam 310-6-8 Electric Strike for Concealed Vertical Rods

MODEL	DESCRIPTION	612	627
310-6-8-12D		\$1457	\$1071
310-6-8-24D		\$1457	\$1071
310-6-8-F-12D	Fail safe	\$1457	\$1071
310-6-8-F-24D	Fail safe	\$1457	\$1071
310-6-8-12D-LCBMA		\$1659	\$1273
310-6-8-24D-LCBMA		\$1659	\$1273
310-6-8-F-12D-LCBMA	Fail safe	\$1659	\$1273
310-6-8-F-24D-LCBMA	Fail safe	\$1659	\$1273

## Folger Adam 310-6-30 Electric Strike for Concealed Vertical Rods

MODEL	DESCRIPTION	612	627
310-6-30-12D		\$2080	\$1785
310-6-30-24D		\$2080	\$1785
310-6-30-F-12D	Fail safe	\$2080	\$1785
310-6-30-F-24D	Fail safe	\$2080	\$1785
310-6-30-12D-LCBMA		\$2398	\$2122
310-6-30-24D-LCBMA		\$2398	\$2122
310-6-30-F-12D-LCBMA	Fail safe	\$2398	\$2122
310-6-30-F-24D-LCBMA	Fail safe	\$2398	\$2122



	A	B	C	D	E
310-6-1	14-1/2" [368.3mm]	4-3/8" [111.125mm]	1-13/16" [46mm]	1-3/4" [44.45mm]	1-3/4" [44.45mm]
310-6-2	15-1/8" [384.2mm]	5" [127mm]	1-13/16" [46mm]	1-3/4" [44.45mm]	1-3/4" [44.45mm]
310-6-3	15-3/4" [400.05mm]	5-5/8" [142.8mm]	1-13/16" [46mm]	1-3/4" [44.45mm]	1-3/4" [44.45mm]
310-6-30	13-1/8" [333.4mm]	3" [76.2mm]	1-13/16" [46mm]	1-3/4" [44.45mm]	1-3/4" [44.45mm]
310-6-8	10-7/8" [276.3mm]		1-13/16" [46mm]	1-3/4" [44.45mm]	1-3/4" [44.45mm]

**INSTALLATION NOTE:** Double-door models are available with four different center-to-center dimensions between latchbolt keepers. Keepers are wide enough to compensate for vertical rod exit bolts, which may be as much as 3/8" (10 mm) off center-to-center dimension, either way. When using an electric strike in conjunction with a vertical rod exit device, it is necessary that:

1. The bottom rod of the exit device be removed or made inoperative
2. The latchbolt of the exit device be the "Pullman" or beveled type
3. The latchbolt be free-latching and remain projected while the door is open. Mechanisms that hold the latchbolt retracted while the door is open, and automatically release it when the door is closed, must be removed or made inoperative.

## Folger Adam 310-6-1— 310-6-30 Electric Strikes for Concealed Vertical Rods **Continued**



**How to Order** Specify quantity and the following information. Order related products separately.

SERIES	KEEPER STYLE	FAIL SAFE/SECURE	VOLTAGE	FINISH	OPTION(S)
<b>310-6-X</b>	<b>(PK)</b>	<b>– F</b>	<b>– 24D</b>	<b>– 627</b>	<b>– LCBMA</b>
<b>ROD SPACING</b>					
<b>1</b> For use with vertical rod spacing between 4" and 4-3/4"	<b>(PK)</b> For use with 3/4" Pullman style latchbolts	<b>(blank)</b> Fail Secure (Standard)	<b>12D</b> 12 Volt	<b>612</b> Satin Bronze	<b>LCBMA</b> Latchbolt & locking cam monitor with auxiliary switch
<b>2</b> For use with vertical rod spacing between 4-5/8" and 5-3/8"			<b>24D</b> 24 Volt		
<b>3</b> For use with vertical rod spacing between 5-1/4" and 6"	<b>F</b> Fail Safe	<b>627</b> Satin Aluminum			
<b>8</b> For only the active leaf of a pair of doors					
<b>30</b> For use with vertical rod spacing between 2-5/8" and 3-3/8"					

### Faceplates

MODEL	612	627
<b>FP-310-6-1</b>	\$813	\$512

### Faceplates

MODEL	612	627
<b>FP-310-6-2</b>	\$813	\$512

### Faceplates

MODEL	612	627
<b>FP-310-6-3</b>	\$813	\$512

### Faceplates

MODEL	612	627
<b>FP-310-6-8</b>	\$813	\$512

### Faceplates

MODEL	612	627
<b>FP-310-6-30</b>	\$813	\$512

### How to Order

PREFIX	SERIES	KEEPER STYLE	FINISH
<b>FP</b>	<b>– 310-6-X</b>	<b>(PK)</b>	<b>– 612</b>
<b>FACEPLATE ONLY</b>			
<b>FP</b> Faceplate	<b>1</b> For use with vertical rod spacing between 4" and 4-3/4" <b>2</b> For use with vertical rod spacing between 4-5/8" and 5-3/8" <b>3</b> For use with vertical rod spacing between 5-1/4" and 6" <b>8</b> For only the active leaf of a pair of doors <b>30</b> For use with vertical rod spacing between 2-5/8" and 3-3/8"	<b>(PK)</b> For use with 3/4" Pullman style latchbolts	<b>612</b> Satin Bronze <b>627</b> Satin Aluminum

## Folger Adam SB:310-1-1 Electric Strike Bodies

MODEL	DESCRIPTION	630
SB:310-1-1-12D		\$1192
SB:310-1-1-24D		\$1192
SB:310-1-1-F-12D	Fail safe	\$1192
SB:310-1-1-F-24D	Fail safe	\$1192
SB:310-1-1-12D-LCBMA		\$1537
SB:310-1-1-24D-LCBMA		\$1537
SB:310-1-1-F-12D-LCBMA	Fail safe	\$1537
SB:310-1-1-F-24D-LCBMA	Fail safe	\$1537

## Folger Adam SB:310-1-2 Electric Strike Bodies

MODEL	DESCRIPTION	630
SB:310-1-2-24D		\$1192
SB:310-1-2-F-12D	Fail safe	\$1192
SB:310-1-2-F-24D	Fail safe	\$1192
SB:310-1-2-12D-LCBMA		\$1537
SB:310-1-2-24D-LCBMA		\$1537
SB:310-1-2-F-12D-LCBMA	Fail safe	\$1537
SB:310-1-2-F-24D-LCBMA	Fail safe	\$1537

## Folger Adam SB:310-1-3 Electric Strike Bodies

MODEL	DESCRIPTION	630
SB:310-1-3-12D		\$1192
SB:310-1-3-24D		\$1192
SB:310-1-3-F-12D	Fail safe	\$1192
SB:310-1-3-F-24D	Fail safe	\$1192
SB:310-1-3-12D-LCBMA		\$1537
SB:310-1-3-24D-LCBMA		\$1537
SB:310-1-3-F-12D-LCBMA	Fail safe	\$1537
SB:310-1-3-F-24D-LCBMA	Fail safe	\$1537

## Folger Adam SB:310-1-30 Electric Strike Bodies

MODEL	DESCRIPTION	630
SB:310-1-30-12D		\$1192
SB:310-1-30-24D		\$1192
SB:310-1-30-F-12D	Fail safe	\$1192
SB:310-1-30-F-24D	Fail safe	\$1192
SB:310-1-30-12D-LCBMA		\$1537
SB:310-1-30-24D-LCBMA		\$1537
SB:310-1-30-F-24D-LCBMA	Fail safe	\$1537
SB:310-1-30-F-12D-LCBMA	Fail safe	\$1537

## How to Order Specify quantity and the following information. Order related products separately.

PREFIX	SERIES	ROD SPACING	KEEPER STYLE	FAIL SAFE/SECURE	VOLTAGE	OPTION(S)
SB	- 310-1	- 1	(PK)	- F	- 24D	- LCBMA
<b>STRIKE BODY ONLY</b>						
SB Strike Body	310-1 Strike Body Only	<b>1</b> For use with vertical rod spacing between 4" and 4-3/4" <b>2</b> For use with vertical rod spacing between 4-5/8" and 5-3/8" <b>3</b> For use with vertical rod spacing between 5-1/4" and 6" <b>30</b> For use with vertical rod spacing between 2-5/8" and 3-3/8"	(PK) For use with Pullman style latchbolts	(blank) Fail Secure (Standard) F Fail Safe	<b>12D</b> 12 Volt <b>24D</b> 24 Volt	LCBMA Latchbolt & locking cam monitor with auxiliary switch

### Folger Adam 712 Electric Strike for Latchbolt Locks

MODEL	DESCRIPTION	605	606	612	613	629	630
712-12D		\$996	\$957	\$957	\$906	\$957	\$854
712-24D		\$996	\$957	\$957	\$906	\$957	\$854
712-F-12D	Fail safe	\$996	\$957	\$957	\$906	\$957	\$854
712-F-24D	Fail safe	\$996	\$957	\$957	\$906	\$957	\$854
712-12D-LBMLCM		\$1178	\$1138	\$1138	\$1088	\$1138	\$1037
712-24D-LBMLCM		\$1178	\$1138	\$1138	\$1088	\$1138	\$1037
712-F-12D-LBMLCM	Fail safe	\$1178	\$1138	\$1138	\$1088	\$1138	\$1037
712-F-24D-LBMLCM	Fail safe	\$1178	\$1138	\$1138	\$1088	\$1138	\$1037

### Folger Adam 712-75 Electric Strike for Latchbolt Locks

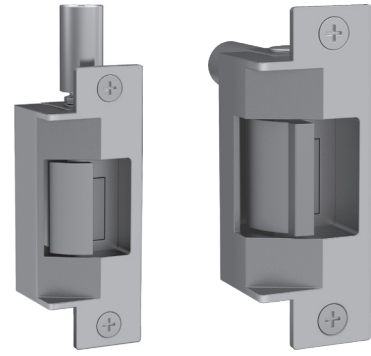
MODEL	DESCRIPTION	605	606	612	613	629	630
712-75-12D		\$1031	\$987	\$987	\$945	\$987	\$889
712-75-24D		\$1031	\$987	\$987	\$945	\$987	\$889
712-75-F-12D	Fail safe	\$1031	\$987	\$987	\$945	\$987	\$889
712-75-F-24D	Fail safe	\$1031	\$987	\$987	\$945	\$987	\$889
712-75-12D-LBMLCM		\$1213	\$1167	\$1167	\$1125	\$1167	\$1072
712-75-24D-LBMLCM		\$1213	\$1167	\$1167	\$1125	\$1167	\$1072
712-75-F-12D-LBMLCM	Fail safe	\$1213	\$1167	\$1167	\$1125	\$1167	\$1072
712-75-F-24D-LBMLCM	Fail safe	\$1213	\$1167	\$1167	\$1125	\$1167	\$1072

### Folger Adam 732 Electric Strike for Latchbolt Locks

MODEL	DESCRIPTION	605	606	612	613	629	630
732-12D		\$996	\$957	\$957	\$906	\$957	\$854
732-24D		\$996	\$957	\$957	\$906	\$957	\$854
732-F-12D	Fail safe	\$996	\$957	\$957	\$906	\$957	\$854
732-F-24D	Fail safe	\$996	\$957	\$957	\$906	\$957	\$854
732-12D-LBMLCM		\$1178	\$1138	\$1138	\$1088	\$1138	\$1037
732-24D-LBMLCM		\$1178	\$1138	\$1138	\$1088	\$1138	\$1037
732-F-12D-LBMLCM	Fail safe	\$1178	\$1138	\$1138	\$1088	\$1138	\$1037
732-F-24D-LBMLCM	Fail safe	\$1178	\$1138	\$1138	\$1088	\$1138	\$1037

### Folger Adam 732-75 Electric Strike for Latchbolt Locks

MODEL	DESCRIPTION	605	606	612	613	629	630
732-75-12D		\$1031	\$987	\$987	\$945	\$987	\$889
732-75-24D		\$1031	\$987	\$987	\$945	\$987	\$889
732-75-F-12D	Fail safe	\$1031	\$987	\$987	\$945	\$987	\$889
732-75-F-24D	Fail safe	\$1031	\$987	\$987	\$945	\$987	\$889
732-75-12D-LBMLCM		\$1213	\$1167	\$1167	\$1125	\$1167	\$1072
732-75-24D-LBMLCM		\$1213	\$1167	\$1167	\$1125	\$1167	\$1072
732-75-F-12D-LBMLCM	Fail safe	\$1213	\$1167	\$1167	\$1125	\$1167	\$1072
732-75-F-24D-LBMLCM	Fail safe	\$1213	\$1167	\$1167	\$1125	\$1167	\$1072



**700 & 742 Series | LBMLCM:** When using LBMLCM with a SARGENT 78/8200 Series or BEST 40 Series Mortise Lock, a 1/2" or 5/8" keeper latchbolt detection will be dependent on the door gap in order to ensure functionality. Consult customer support regarding use with other manufacturers.

**712-75, 732-75 and 742-75:** The LBMLCM option is compatible with SARGENT 78/8200 Series or BEST 40 Series 3/4" throw mortise lock latchbolts in hollow metal and wood frame applications. Monitoring capabilities are dependent on a maximum 1/8" door gap in order to ensure functionality. Consult customer support regarding use with other manufacturers.

### How to Order *Specify quantity and the following information. Order related products separately.*

SOLENOID ORIENTATION	KEEPER STYLE	FAIL SAFE/SECURE	VOLTAGE	FINISH	OPTION(S)
<b>712</b>		<b>- F</b>	<b>- 24D</b>	<b>- 630</b>	<b>- LBMLCM</b>
712 Vertical for hollow metal frames	(blank) 1/2" PK Keeper for up to 5/8" latchbolt	(blank) Fail Secure (Standard)	12D 12 Volt 24D 24 Volt	605 Bright Brass 606 Satin Brass	LBMLCM Latchbolt & locking cam monitor
732 Horizontal for wood and concrete frames	-75 3/4 PK keeper for up to a 3/4" throw latchbolt without deadbolt	F Fail Safe		612 Satin Bronze 613 Bronze Toned 629 Bright Stainless Steel 630 Satin Stainless Steel	



### Folger Adam SB:710 Electric Strike Bodies

MODEL	DESCRIPTION	630
SB:710-12D		\$672
SB:710-24D		\$672
SB:710-F-12D	Fail safe	\$672
SB:710-F-24D	Fail safe	\$672
SB:710-12D-LBMLCM		\$852
SB:710-24D-LBMLCM		\$852
SB:710-F-12D-LBMLCM	Fail safe	\$852
SB:710-F-24D-LBMLCM	Fail safe	\$852

### Folger Adam SB:710-75 Electric Strike Bodies

MODEL	DESCRIPTION	630
SB:710-75-12D		\$672
SB:710-75-24D		\$672
SB:710-75-F-12D	Fail safe	\$672
SB:710-75-F-24D	Fail safe	\$672
SB:710-75-12D-LBMLCM		\$852
SB:710-75-24D-LBMLCM		\$852
SB:710-75-F-12D-LBMLCM	Fail safe	\$852
SB:710-75-F-24D-LBMLCM	Fail safe	\$852

### Folger Adam SB:730 Electric Strike Bodies

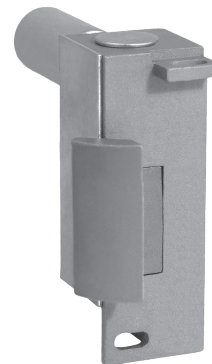
MODEL	DESCRIPTION	630
SB:730-12D		\$672
SB:730-24D		\$672
SB:730-F-12D	Fail safe	\$672
SB:730-F-24D	Fail safe	\$672
SB:730-12D-LBMLCM		\$852
SB:730-24D-LBMLCM		\$852
SB:730-F-12D-LBMLCM	Fail safe	\$852
SB:730-F-24D-LBMLCM	Fail safe	\$852

### Folger Adam SB:730-75 Electric Strike Bodies

MODEL	DESCRIPTION	630
SB:730-75-12D		\$672
SB:730-75-24D		\$672
SB:730-75-F-12D	Fail safe	\$672
SB:730-75-F-24D	Fail safe	\$672
SB:730-75-12D-LBMLCM		\$852
SB:730-75-24D-LBMLCM		\$852
SB:730-75-F-12D-LBMLCM	Fail safe	\$852
SB:730-75-F-24D-LBMLCM	Fail safe	\$852

### How to Order *Specify quantity and the following information. Order related products separately.*

PREFIX	SOLENOID ORIENTATION	KEEPER STYLE	FAIL SAFE/SECURE	VOLTAGE	OPTION(S)
<b>SB</b>	<b>710</b>	<b>- (blank)</b>	<b>- F</b>	<b>- 24D</b>	<b>- LBMLCM</b>
SB Strike Body Only	<b>710</b> Vertical for hollow metal frames <b>730</b> Horizontal for wood and concrete frames	<b>(blank)</b> 1/2" PK Keeper for up to 5/8" latchbolt <b>-75</b> 3/4" PK keeper for up to a 3/4" throw latchbolt without deadbolt	<b>(blank)</b> Fail Secure (Standard) <b>F</b> Fail Safe	<b>12D</b> 12 Volt <b>24D</b> 24 Volt	<b>LBMLCM</b> Latchbolt & locking cam monitor



**INSTALLATION NOTE:** Double-door models are available with four different center-to-center dimensions between latchbolt keepers. Keepers are wide enough to compensate for vertical rod exit bolts, which may be as much as 3/8" (10 mm) off center-to-center dimension, either way. When using an electric strike in conjunction with a vertical rod exit device, it is necessary that:

1. The bottom rod of the exit device be removed or made inoperative.
2. The latchbolt of the exit device be the "Pullman" or beveled type.
3. The latchbolt be free-latching and remain projected while the door is open. Mechanisms that hold the latchbolt retracted while the door is open, and automatically release it when the door is closed, must be removed or made inoperative.

### Faceplates

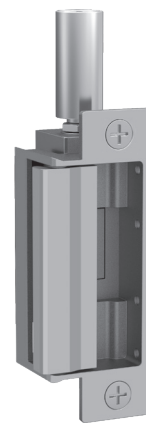
MODEL	605	606	612	613	629	630
FP-712	\$330	\$292	\$292	\$241	\$292	\$188
FP-712-75	\$366	\$322	\$322	\$279	\$322	\$221

### How to Order

PREFIX	SERIES	FINISH
<b>FP</b>	<b>- 732-75</b>	<b>- 613</b>
<b>FACEPLATE ONLY</b>		
FP Faceplate	<b>712</b> 1/2" PK keeper standard; Hollow metal frames, for up to a 5/8" throw latchbolt <b>712-75</b> 3/4" PK keeper standard; Hollow metal frames, for up to a 3/4" throw latchbolt without deadbolt <b>732</b> PK keeper standard; Wood frames, for up to a 5/8" throw latchbolt <b>732-75</b> 3/4" PK keeper standard; Wood frames, for up to a 3/4" throw latchbolt without deadbolt	<b>605</b> Bright Brass <b>606</b> Satin Brass <b>612</b> Satin Bronze <b>613</b> Bronze Toned <b>629</b> Bright Stainless Steel <b>630</b> Satin Stainless Steel

## Folger Adam 742-75 Complete Pacs for Latchbolt Locks

MODEL	DESCRIPTION	605	606	612	613	629	630
742-75-12D		\$1066	\$1024	\$1024	\$974	\$1024	\$924
742-75-24D		\$1066	\$1024	\$1024	\$974	\$1024	\$924
742-75-F-12D	Fail safe	\$1066	\$1024	\$1024	\$974	\$1024	\$924
742-75-F-24D	Fail safe	\$1066	\$1024	\$1024	\$974	\$1024	\$924
742-75-12D-LBMLCM		\$1246	\$1204	\$1204	\$1155	\$1204	\$1104
742-75-24D-LBMLCM		\$1246	\$1204	\$1204	\$1155	\$1204	\$1104
742-75-F-12D-LBMLCM	Fail safe	\$1246	\$1204	\$1204	\$1155	\$1204	\$1104
742-75-F-24D-LBMLCM	Fail safe	\$1246	\$1204	\$1204	\$1155	\$1204	\$1104



### How to Order Complete Pacs

Specify quantity and the following information. Order related products separately.

SERIES	FAIL SAFE/SECURE	VOLTAGE	FINISH	OPTION(S)
742-75	-F	-12D	-613	-LBMLCM
<b>SOLENOID ORIENTATION</b>				
742-75	(blank) Fail Secure (Standard)	12D 12 Volt	605 Bright Brass	LBMLCM Latchbolt & locking cam monitor
	F Fail Safe	24D 24 Volt	606 Satin Brass	
			612 Satin Bronze	
			613 Bronze Toned	
			629 Bright Stainless Steel	
			630 Satin Stainless Steel	

### Faceplates

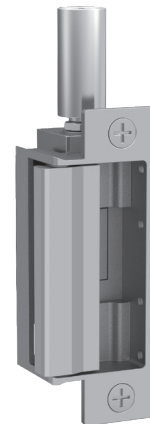
MODEL	605	606	612	613	629	630
FP-742	\$352	\$309	\$309	\$257	\$309	\$208

### How to Order Faceplate Only

PREFIX	SERIES	FINISH
FP	-742-75	-630
FP Faceplate	742-75 Hollow metal frames, for up to a 3/4" throw latchbolt without deadbolt	605 Bright Brass 606 Satin Brass 612 Satin Bronze 613 Bronze Toned 629 Bright Stainless Steel 630 Satin Stainless Steel

## Folger Adam SB740-75 Electric Strike Bodies

MODEL	DESCRIPTION	630
SB:740-75-12D		\$721
SB:740-75-24D		\$721
SB:740-75-F-12D	Fail safe	\$721
SB:740-75-F-24D	Fail safe	\$721
SB:740-75-12D-LBMLCM		\$902
SB:740-75-24D-LBMLCM		\$902
SB:740-75-F-12D-LBMLCM	Fail safe	\$902
SB:740-75-F-24D-LBMLCM	Fail safe	\$902



### How to Order

Specify quantity and the following information. Order related products separately.

PREFIX	SERIES	FAIL SAFE/SECURE	VOLTAGE	OPTION(S)
SB	740-75	—	-24D	—
<b>STRIKE BODY ONLY</b>				
SB Strike Body	740-75	(blank) Fail Secure (Standard)	12D 12 Volt	LBMLCM Latchbolt & locking cam monitor
		F Fail Safe	24D 24 Volt	

**700 & 742 Series | LBMLCM:** When using LBMLCM with a SARGENT 78/8200 Series or BEST 40 Series Mortise Lock, a 1/2" or 5/8" keeper latchbolt detection will be dependent on the door gap in order to ensure functionality. Consult customer support regarding use with other manufacturers.

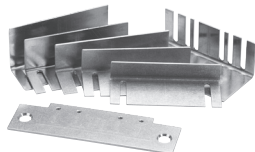
**712-75, 732-75 and 742-75:** The LBMLCM option is compatible with SARGENT 78/8200 Series or BEST 40 Series 3/4" throw mortise lock latchbolts in hollow metal and wood frame applications. Monitoring capabilities are dependent on a maximum 1/8" door gap in order to ensure functionality. Consult customer support regarding use with other manufacturers.



# Electric Strike Accessories

## Electric Strike Accessories

ITEM	DESCRIPTION	PRICE
HESCUT-MTK	For installing the 1006, 1500, 1600, 4500, 5000, 5200, 7000, and 7501 electric strikes (4-7/8" ANSI jamb preparations only)	\$94
9000-MTK	Metal template installation kit	\$89
SMB	Surface mounting box	\$239
150	Stainless steel. Installed at the edge of the door to cover the lock and electric strike. Available in 626 finish only	\$102
152	Mount inside hollow metal, wood and aluminum jambs	\$28
157	Torx screws	\$16
157D	Tamper-Resistant Torx R20 insert bit	\$46
310-2-3	Available for the Folger Adam 300 Series electric strike in standard 630 finish. Torx screws included	\$270
2001-1	Converts AC to unfiltered DC. Rated 35 V, 2 Amp. Not recommended for 1006 Electric Strike	\$42
2001M	Converts AC to unfiltered DC. Rated 35 V, 1 Amp. Includes MOV and self-resettable fuse. Not recommended for 1006 Electric Strike.	\$76
2004M	Adapter between existing HES electric strikes and ElectroLynx® connectors	\$45
2005M3	For use with 1006, input voltage must be DC.	\$115
2006M	Audible operation indicator at 24VDC, 75db at 11-3/4"	\$58
2007M	With 4" wire leads	\$24



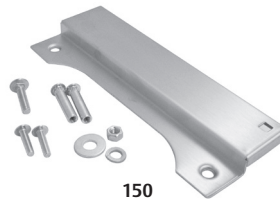
HESCUT-MTK



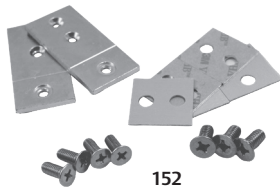
9000-MTK



SMB



150



152



157



157D



310-2-3



2001-1



2001M



2004M



2005M3



2006M

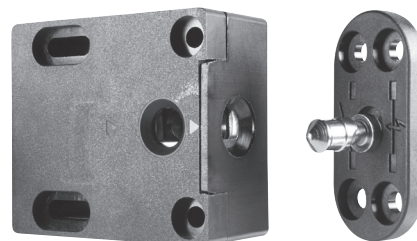


2007M

# Cabinet Locks

## 610 Multi-Purpose Electromechanical Lock

ITEM	DESCRIPTION	PRICE
610	Standard — No Monitoring	\$147
610LM	Locked State Monitoring	\$205



### How to Order

Specify quantity and the following information. Order related products separately.

SERIES	OPTION(S)
610	– LM
610 Cabinet Lock	(blank) No Monitoring LM Locked State Monitoring

## 660 Multi-Purpose Electromechanical Lock

MODEL	DESCRIPTION	BLK
660		\$173
660-LBSM		\$215
660-LBSM-20PK		\$4300
660-Preload		\$257
660-LBSM-Preload		\$299



### Accessories

ITEM	DESCRIPTION	PRICE
660-KO	660 Key override	\$95

### How to Order

Specify quantity and the following information. Order related products separately.

SERIES	VOLTAGE	OPTION(S)
660	– 12V	– LBSM – Preload
660 Cabinet Lock	12V 12 Volt 24V 24 Volt	(blank) No preload, no monitoring Preload Up to 15 lbs LBSM Locked state monitoring LBSM-20PK Locked state monitoring 20 pack LBSM-Preload Locked state monitoring with Preload

## KP20 Series Cabinet Lock

MODEL	DESCRIPTION	BLK
KP20	Stand-alone Keypad Cabinet Lock	\$135



## K100 Aperio® Wireless Cabinet Lock Kits

ITEM	DESCRIPTION	PRICE
K100-622H-IPS-BP	K100-622 Aperio™ v3 Integrated Wireless Cabinet Lock Kit For 1/16" to 1/2" Thick Doors With Pinch Knob, HID multiCLASS SE Card Reader And AH20 Wiegand 1-to-1 Wireless Hub	\$1030
K100-622H-IPS-BP2	K100-622 Aperio™ v3 Integrated Wireless Cabinet Lock Kit For ≤ 1/2" to 1-1/2" Thick Doors With Pinch Knob, HID multiCLASS SE Card Reader And AH20 Wiegand 1-to-1 Wireless Hub	\$1040
K100-622H-IPS-BP3	K100-622 Aperio™ v3 Integrated Wireless Cabinet Lock Kit For ≤ 1-1/2" to 2-1/4" Thick Doors With Pinch Knob, HID multiCLASS SE Card Reader And AH20 Wiegand 1-to-1 Wireless Hub	\$1050
K100-622H-IPS-BL	K100-622 Aperio™ v3 Integrated Wireless Cabinet Lock Kit For 1/16" to 1/2" Thick Doors With Lever Knob, HID multiCLASS SE Card Reader And AH20 Wiegand 1-to-1 Wireless Hub	\$1030
K100-622H-IPS-BL2	K100-622 Aperio™ v3 Integrated Wireless Cabinet Lock Kit For ≤ 1/2" to 1-1/2" Thick Doors With Lever Knob, HID multiCLASS SE Card Reader And AH20 Wiegand 1-to-1 Wireless Hub	\$1040
K100-622H-IPS-BL3	K100-622 Aperio™ v3 Integrated Wireless Cabinet Lock Kit For ≤ 1-1/2" to 2-1/4" Thick Doors With Lever Knob, HID multiCLASS SE Card Reader And AH20 Wiegand 1-to-1 Wireless Hub	\$1050



## K100 Demo Mounts

ITEM	DESCRIPTION	PRICE
DEMO-K100-622-IPS-BL	K100-622 Aperio™ Integrated Wireless Cabinet Lock Demo Mount With Lever Knob and HID multiCLASS SE Card Reader, NFC HID Mobile Access Enabled	\$1105
DEMO-K100-622-IPS-BP	K100-622 Aperio™ Integrated Wireless Cabinet Lock Demo Mount With Pinch Knob and HID multiCLASS SE Card Reader, NFC HID Mobile Access Enabled	\$1105

## Accessories

ITEM	DESCRIPTION	PRICE
OBS-622	K Series Open Back Strike Plate for Drawers	\$30

## How to Order Specify quantity and the following information. Order related products separately.

SERIES	MODEL	CREDENTIAL TECHNOLOGY	COLOR	KNOB TYPE	SHAFT LENGTH (DOOR THICKNESS)
K100	- 622H	- IPS	- B	P	2
	622H* Factory Paired* for Doors with AH20 1:1 Wiegand Hub	IPS HID Prox®, Kantech ioProx, HID iCLASS®, HID iCLASS SE® (SIOenabled), HID iCLASS® Seos™, HID MIFARE® SE, HID DESFire® EV1 SE, MIFARE Classic, MIFARE DESFire EV1, NFC-enabled mobile phones	B Black	P Pinch L Lever	2 ≥ 1/2" to 1-1/2" 3 ≥ 1-1/2" to 2-1/4"

\*Kit includes integrated lock paired with Wiegand 1:1 wireless hub.

**K100:** The K100 Cabinet Lock is available as either a pre-paired lock and hub kit (no certification required) or as a field configurable component (requires Aperio® Certified Integrator certification). Pre-paired kits support limited features. Field configured devices are required in order to support all options. Visit [www.IntelligentOpenings.com](http://www.IntelligentOpenings.com) to learn more.

## K200 Integrated Wired Access Control Cabinet Lock

ITEM	DESCRIPTION	PRICE
K200-622-IPS-BP	K200-622 Integrated Wired, Wiegand Cabinet Lock For Doors With HID multiCLASS SE Card Reader and Black Pinch Knob	\$755
K200-622-IPV040-BP	K200-622 Integrated Wired, Wiegand Cabinet Lock For Doors With HID SE PIV-I 40 Bit Card Reader and Black Pinch Knob	\$755
K200-622-IPV064-BP	K200-622 Integrated Wired, Wiegand Cabinet Lock For Doors With HID SE PIV-I 64 Bit Card Reader and Black Pinch Knob	\$755
K200-622-IPV075-BP	K200-622 Integrated Wired, Wiegand Cabinet Lock For Doors With HID SE PIV-I 75 Bit Card Reader and Black Pinch Knob	\$755
K200-622-IPV128-BP	K200-622 Integrated Wired, Wiegand Cabinet Lock For Doors With HID SE PIV-I 128 Bit Card Reader and Black Pinch Knob	\$755
K200-622-IPV200-BP	K200-622 Integrated Wired, Wiegand Cabinet Lock For Doors With HID SE PIV-I 200 Bit Card Reader and Black Pinch Knob	\$755



## K200 Integrated Wired Access Control Cabinet Lock for Drawers

ITEM	DESCRIPTION	PRICE
K200-622D-IPS-BP	K200-622 Integrated Wired, Wiegand Cabinet Lock For Drawers With HID multiCLASS SE Card Reader and Black Pinch Knob	\$785
K200-622D-IPV040-BP	K200-622 Integrated Wired, Wiegand Cabinet Lock For Drawers With HID SE PIV-I 40 Bit Card Reader and Black Pinch Knob	\$785
K200-622D-IPV064-BP	K200-622 Integrated Wired, Wiegand Cabinet Lock For Drawers With HID SE PIV-I 64 Bit Card Reader and Black Pinch Knob	\$785
K200-622D-IPV075-BP	K200-622 Integrated Wired, Wiegand Cabinet Lock For Drawers With HID SE PIV-I 75 Bit Card Reader and Black Pinch Knob	\$785
K200-622D-IPV128-BP	K200-622 Integrated Wired, Wiegand Cabinet Lock For Drawers With HID SE PIV-I 128 Bit Card Reader and Black Pinch Knob	\$785
K200-622D-IPV200-BP	K200-622 Integrated Wired, Wiegand Cabinet Lock For Drawers With HID SE PIV-I 200 Bit Card Reader and Black Pinch Knob	\$785

## KS-M Mechanical Server Cabinet Lock

ITEM	DESCRIPTION	PRICE
KS-M-B	KS-M Mechanical Server Cabinet Lock with No Cylinder	\$126
KS-M-B-K1	KS-M Mechanical Server Cabinet Lock with MEDECO X4 SFIC (DGV Commercial Keyway) with 2 Keys (1 Control, 1 User)	\$231



## KS200 Integrated Wired, Wiegand Access Control Server Cabinet Lock

ITEM	DESCRIPTION	PRICE
KS200-S-IPS-B	KS200-S Integrated Wired, Wiegand Server Cabinet Lock With No Cylinder and HID multiCLASS SE Card Reader, HID NFC Mobile Access Enabled	\$670
KS200-S-IPS-B-BC	KS200-S Integrated Wired, Wiegand Server Cabinet Lock With Blank Plastic SFIC Core and HID multiCLASS SE Card Reader, HID NFC Mobile Access Enabled	\$685
KS200-S-IPS-B-K1	KS200-S Integrated Wired, Wiegand Server Cabinet Lock With MEDECO X4 SFIC (DGV Commercial Keyway) with 2 Keys (1 Control, 1 User) and HID multiCLASS SE Card Reader, HID NFC Mobile Access Enabled	\$770
KS200-S-IPV040-B	KS200-S Integrated Wired, Wiegand Server Cabinet Lock With No Cylinder and HID SE PIV-I 40 Bit Card Reader, HID NFC Mobile Access Enabled	\$670
KS200-S-IPV040-B-BC	KS200-S Integrated Wired, Wiegand Server Cabinet Lock With Blank Plastic SFIC Core and HID SE PIV-I 40 Bit Card Reader, HID NFC Mobile Access Enabled	\$685
KS200-S-IPV040-B-K1	KS200-S Integrated Wired, Wiegand Server Cabinet Lock With MEDECO X4 SFIC (DGV Commercial Keyway) with 2 Keys (1 Control, 1 User) and HID SE PIV-I 40 Bit Card Reader, HID NFC Mobile Access Enabled	\$770
KS200-S-IPV064-B	KS200-S Integrated Wired, Wiegand Server Cabinet Lock With No Cylinder and HID SE PIV-I 64 Bit Card Reader, HID NFC Mobile Access Enabled	\$670
KS200-S-IPV064-B-BC	KS200-S Integrated Wired, Wiegand Server Cabinet Lock With Blank Plastic SFIC Core and HID SE PIV-I 64 Bit Card Reader, HID NFC Mobile Access Enabled	\$685
KS200-S-IPV064-B-K1	KS200-S Integrated Wired, Wiegand Server Cabinet Lock With MEDECO X4 SFIC (DGV Commercial Keyway) with 2 Keys (1 Control, 1 User) and HID SE PIV-I 64 Bit Card Reader, HID NFC Mobile Access Enabled	\$770
KS200-S-IPV075-B	KS200-S Integrated Wired, Wiegand Server Cabinet Lock With No Cylinder and HID SE PIV-I 75 Bit Card Reader, HID NFC Mobile Access Enabled	\$670
KS200-S-IPV075-B-BC	KS200-S Integrated Wired, Wiegand Server Cabinet Lock With Blank Plastic SFIC Core and HID SE PIV-I 75 Bit Card Reader, HID NFC Mobile Access Enabled	\$685
KS200-S-IPV075-B-K1	KS200-S Integrated Wired, Wiegand Server Cabinet Lock With MEDECO X4 SFIC (DGV Commercial Keyway) with 2 Keys (1 Control, 1 User) and HID SE PIV-I 75 Bit Card Reader, HID NFC Mobile Access Enabled	\$770
KS200-S-IPV128-B	KS200-S Integrated Wired, Wiegand Server Cabinet Lock With No Cylinder and HID SE PIV-I 128 Bit Card Reader, HID NFC Mobile Access Enabled	\$670
KS200-S-IPV128-B-BC	KS200-S Integrated Wired, Wiegand Server Cabinet Lock With Blank Plastic SFIC Core and HID SE PIV-I 128 Bit Card Reader, HID NFC Mobile Access Enabled	\$685
KS200-S-IPV128-B-K1	KS200-S Integrated Wired, Wiegand Server Cabinet Lock With MEDECO X4 SFIC (DGV Commercial Keyway) with 2 Keys (1 Control, 1 User) and HID SE PIV-I 128 Bit Card Reader, HID NFC Mobile Access Enabled	\$770
KS200-S-IPV200-B	KS200-S Integrated Wired, Wiegand Server Cabinet Lock With No Cylinder and HID SE PIV-I 200 Bit Card Reader, HID NFC Mobile Access Enabled	\$670
KS200-S-IPV200-B-BC	KS200-S Integrated Wired, Wiegand Server Cabinet Lock With Blank Plastic SFIC Core and HID SE PIV-I 200 Bit Card Reader, HID NFC Mobile Access Enabled	\$685
KS200-S-IPV200-B-K1	KS200-S Integrated Wired, Wiegand Server Cabinet Lock With MEDECO X4 SFIC (DGV Commercial Keyway) with 2 Keys (1 Control, 1 User) and HID SE PIV-I 200 Bit Card Reader, HID NFC Mobile Access Enabled	\$770



## KS210 Integrated Wired, RS-485 OSDP Access Control Server Cabinet Lock

ITEM	DESCRIPTION	PRICE
KS210-S-IPS-B	KS210-S Integrated Wired, OSDP Server Cabinet Lock With No Cylinder and HID multiCLASS SE Card Reader, HID BLE & NFC Mobile Access Enabled	\$750
KS210-S-IPS-B-BC	KS210-S Integrated Wired, OSDP Server Cabinet Lock With Blank Plastic SFIC Core and HID multiCLASS SE Card Reader, HID BLE & NFC Mobile Access Enabled	\$765
KS210-S-IPS-B-K1	KS210-S Integrated Wired, OSDP Server Cabinet Lock With MEDECO X4 SFIC (DGV Commercial Keyway) with 2 Keys (1 Control, 1 User) and HID multiCLASS SE Card Reader, HID BLE & NFC Mobile Access Enabled	\$850
KS210-S-IPV040-B	KS210-S Integrated Wired, OSDP Server Cabinet Lock With No Cylinder and HID SE PIV-I 40 Bit Card Reader, HID BLE & NFC Mobile Access Enabled	\$750
KS210-S-IPV040-B-BC	KS210-S Integrated Wired, OSDP Server Cabinet Lock With Blank Plastic SFIC Core and HID SE PIV-I 40 Bit Card Reader, HID BLE & NFC Mobile Access Enabled	\$765
KS210-S-IPV040-B-K1	KS210-S Integrated Wired, OSDP Server Cabinet Lock With MEDECO X4 SFIC (DGV Commercial Keyway) with 2 Keys (1 Control, 1 User) and HID SE PIV-I 40 Bit Card Reader, HID BLE & NFC Mobile Access Enabled	\$850
KS210-S-IPV064-B	KS210-S Integrated Wired, OSDP Server Cabinet Lock With No Cylinder and HID SE PIV-I 64 Bit Card Reader, HID BLE & NFC Mobile Access Enabled	\$750
KS210-S-IPV064-B-BC	KS210-S Integrated Wired, OSDP Server Cabinet Lock With Blank Plastic SFIC Core and HID SE PIV-I 64 Bit Card Reader, HID BLE & NFC Mobile Access Enabled	\$765
KS210-S-IPV064-B-K1	KS210-S Integrated Wired, OSDP Server Cabinet Lock With MEDECO X4 SFIC (DGV Commercial Keyway) with 2 Keys (1 Control, 1 User) and HID SE PIV-I 64 Bit Card Reader, HID BLE & NFC Mobile Access Enabled	\$850
KS210-S-IPV075-B	KS210-S Integrated Wired, OSDP Server Cabinet Lock With No Cylinder and HID SE PIV-I 75 Bit Card Reader, HID BLE & NFC Mobile Access Enabled	\$750
KS210-S-IPV075-B-BC	KS210-S Integrated Wired, OSDP Server Cabinet Lock With Blank Plastic SFIC Core and HID SE PIV-I 75 Bit Card Reader, HID BLE & NFC Mobile Access Enabled	\$765
KS210-S-IPV075-B-K1	KS210-S Integrated Wired, OSDP Server Cabinet Lock With MEDECO X4 SFIC (DGV Commercial Keyway) with 2 Keys (1 Control, 1 User) and HID SE PIV-I 75 Bit Card Reader, HID BLE & NFC Mobile Access Enabled	\$850
KS210-S-IPV128-B	KS210-S Integrated Wired, OSDP Server Cabinet Lock With No Cylinder and HID SE PIV-I 128 Bit Card Reader, HID BLE & NFC Mobile Access Enabled	\$750
KS210-S-IPV128-B-BC	KS210-S Integrated Wired, OSDP Server Cabinet Lock With Blank Plastic SFIC Core and HID SE PIV-I 128 Bit Card Reader, HID BLE & NFC Mobile Access Enabled	\$765
KS210-S-IPV128-B-K1	KS210-S Integrated Wired, OSDP Server Cabinet Lock With MEDECO X4 SFIC (DGV Commercial Keyway) with 2 Keys (1 Control, 1 User) and HID SE PIV-I 128 Bit Card Reader, HID BLE & NFC Mobile Access Enabled	\$850
KS210-S-IPV200-B	KS210-S Integrated Wired, OSDP Server Cabinet Lock With No Cylinder and HID SE PIV-I 200 Bit Card Reader, HID BLE & NFC Mobile Access Enabled	\$750
KS210-S-IPV200-B-BC	KS210-S Integrated Wired, OSDP Server Cabinet Lock With Blank Plastic SFIC Core and HID SE PIV-I 200 Bit Card Reader, HID BLE & NFC Mobile Access Enabled	\$765
KS210-S-IPV200-B-K1	KS210-S Integrated Wired, OSDP Server Cabinet Lock With MEDECO X4 SFIC (DGV Commercial Keyway) with 2 Keys (1 Control, 1 User) and HID SE PIV-I 200 Bit Card Reader, HID BLE & NFC Mobile Access Enabled	\$850



## Accessories

### K200, KS-M, KS200 & KS210 Accessories

ITEM	DESCRIPTION	PRICE
OBS-622	K Series Open Back Strike Plate for Drawers	\$30
CBL6-QC12	Lock Side Interface Cable: 6 Foot, 12 Conductor and Molex both ends	\$70
CBL12-QC12	System Side Interface Cable: 12 Foot, 12 Conductor and Molex one end, pinned one end	\$90
SFIC	KS Series MEDECO X4 SFIC Small Format Interchangeable Core (DGV Commercial Keyway) with 2 Keys (1 Control, 1 User)	\$100
SFIC-BC	KS Series SFIC Small Format Interchangeable Core Blank, Black Plastic Core	\$15
KS-DPS	KS Series Surface Mount DPS (external)	\$30
KS-CAM45	KS Series Locking Cam: 45MM—5	\$8
KS-CAM38	KS Series Locking Cam: 38MM—1	\$8
WT-1	Wiegand Test Box with LED Indicators	\$700
WT-2	Wiegand Test Box with LCD Backlit Display with LED Indicators	\$807



# Warranties & Terms & Conditions

## HES Warranties

We believe that the best products in the industry should be supported by our commitment to deliver the highest quality products and services. HES is proud to extend the most comprehensive no-fault, no-questions asked warranty coverage to all of our products and solutions. This is our expectation and commitment to you – our valued customer.



**SecuriCare  
Warranty**

### SecuriCare 10-year Warranty

- Duration:** Ten years from date of shipment.
- Condition:** Any reason including, but not limited to, installation error, vandalism or force majeure.
- Replacement:** Replacement product or equivalent shipped at h.e.s. expense via next day air freight in most cases.
- Products Covered:**
- When installed with a Smart PAC III, the following electric strikes are upgraded to the 10-year warranty:
    - » 1006, 1500, 1600, 4500, 5000, 5200, 5300, 7500, 8000, 8300, 8500, 9400, 9500, 9600, 9700, 9800
    - » Folger Adam 310, 712, 732, 742



**SecuriCare  
Warranty**

### SecuriCare 5-year Warranty

- Duration:** Five years from date of shipment.
- Condition:** Any reason including, but not limited to, installation error, vandalism or force majeure.
- Replacement:** Replacement product or equivalent shipped at h.e.s.'s expense via next day air freight in most cases.
- Products Covered:**
- Electric Strikes:
    - » 1006, 1500, 1600, 4500, 5000, 5200, 5300, 7500, 8000, 8300, 8500, 9400, 9500, 9600, 9700, 9800
    - » Folger Adam 310, 712, 732, 742
    - » Securitron MUNL, UNL



**SecuriCare  
Warranty**

### SecuriCare 3-year Warranty

- Duration:** Three years from date of shipment.
- Condition:** Any reason, including but not limited to, installation error, vandalism or force majeure.
- Replacement:** Replacement product or equivalent shipped at h.e.s.'s expense via next day air freight in most cases.
- Products Covered:**
- ES100 Aperio® Wireless Electric Strike
  - Cabinet Locks: 600, K, and KS Series & Accessories

Check your individual product to determine warranty coverage. Batteries and consumables are not covered by HES Warranty programs. Replacement products, at HES's sole option, may be the identical item or a unit which serves as a functional replacement. If the customer has an account with HES or a valid credit card, the customer may order an advance replacement product, whereby HES will charge the customer's account for the price of the product plus next day air freight, and will credit back to the customer the full amount of the charge, including outbound freight, upon HES receipt of the original product from the customer. HES's sole and exclusive liability, and customer's sole remedy, is limited to the replacement of the HES product when delivered to HES's facility (freight and insurance charges prepaid by customer).

## HES Terms & Conditions

**PRICES:** All prices are subject to change without notice. Prices listed on the HES website will serve as the most current list price. All shipments will be made at prices in effect at the time of order. The customer shall be responsible for payment of all applicable sales and/or use taxes and freight costs.

**MINIMUM ORDER:** Minimum product charge per invoice is \$150.00 USD.

**PAYMENT TERMS:** Net thirty (30) days from date of invoice. Interest at the rate of up to 1-1/2% per month may be charged on all past due accounts. An order received on an account which has not been paid within 45 days of the date of invoice may not be processed until the account is current. Custom orders may require a deposit.

**DELIVERY TERMS:** All prices are Ex-works factory. Purchaser assumes the risk of loss or damage to the goods while in transit from the point of shipment. HES reserves the right to make delivery in installments. Installments shall be separately invoiced and paid for when due. Delay in delivery of an installment shall not relieve the purchaser of its obligation to accept remaining deliveries.

**FREIGHT POLICY:** All Purchase Orders received with a minimum net value of \$3,500 will qualify automatically for free standard freight within the continental United States. This minimum amount applies per Purchase Order to qualify and does not include free expedited freight. Qualified orders may ship partial or ship complete at your preference. Qualified orders that ship partial will not incur freight charges. All shipments that do not qualify for free freight will be charged for freight based upon our terms in effect at the time of shipment. Customers may provide their own carrier account number for expedited freight methods or for any Purchase Order to be used to cover freight costs. Minimum amounts are subject to change without notice.

**SHORTAGE:** Any claim for shortages must be made to HES in writing within one (1) week of receipt of merchandise.

**WARRANTY RETURNS:** A Customer Care Form (CCF) for defective product must be obtained from HES before any merchandise can be returned. CCF's are valid for sixty (60) days from date of issuance. Goods returned under the terms of MagnaCare® and SecuriCare® Warranties may require a copy of the original invoice.

**RETURNS:** A Customer Care Form (CCF) must be obtained from HES before any merchandise can be returned. CCF's are valid for sixty (60) days from date of issuance. Items that are not factory sealed, or that are returned later than 90 days from the date of receipt are subject to a restocking charge plus an additional charge for any damage.

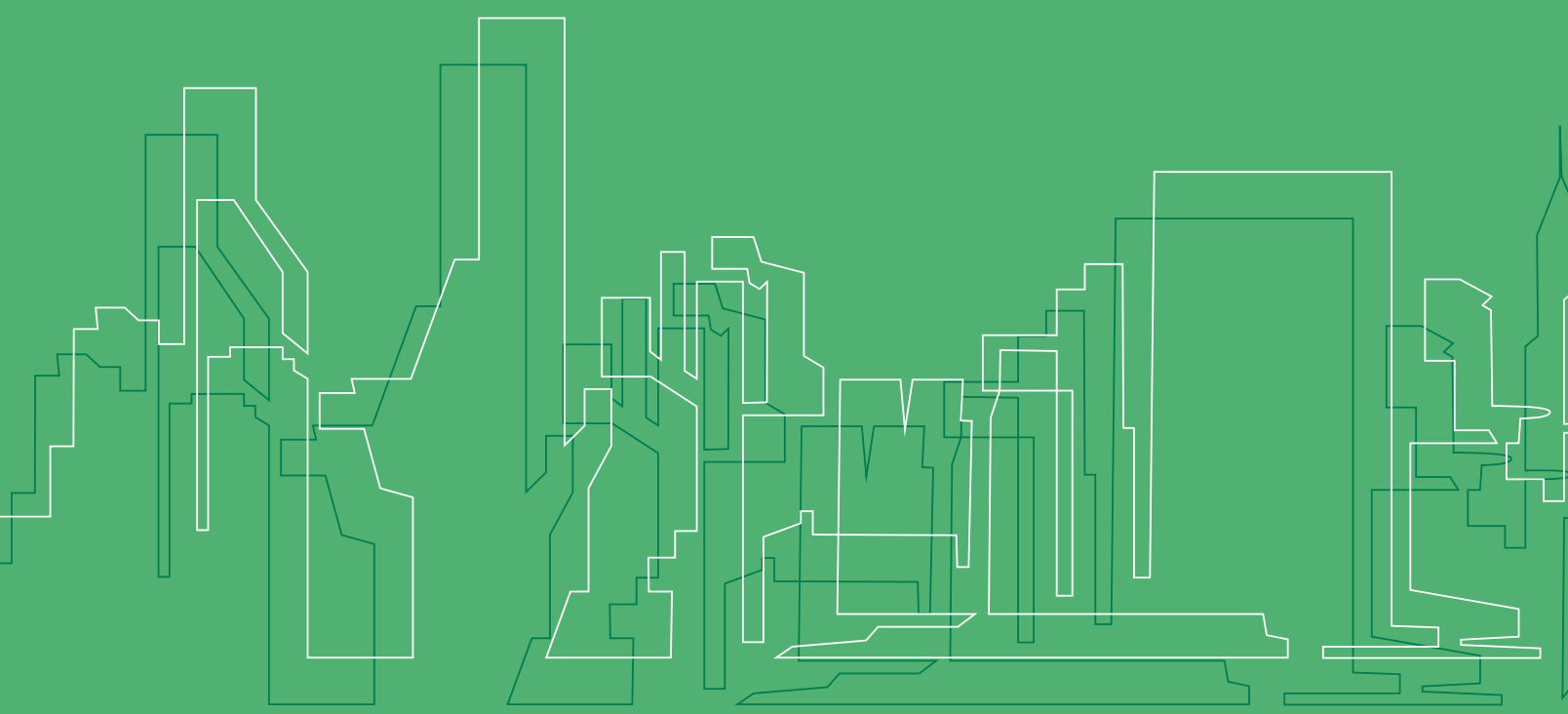
**CANCELLATIONS:** Any order may be subject to a 5% cancellation charge for catalog items. Cancellation of non-catalog or custom items will be subject to a 20% cancellation charge plus all costs (both direct and indirect) incurred by manufacturing at the point of cancellation that are properly allocated to the cancelled item(s).

**LIMITATION OF LIABILITY:** Neither party will be liable to the other for any delay or failure in performance arising directly out of war, sabotage, insurrection, riot, and any other act of civil disobedience, act of public enemy, fire, explosion, flood, storm, or other act of God or nature, or similar cause beyond its reasonable control, including shortage or unavailability of labor or materials. If, notwithstanding the foregoing limitations, HES has any liability to the purchaser, the purchaser agrees that the total liability to the purchaser for all losses, damages, and causes of action, whether in contract, equity, tort (including without limitation, negligence and gross negligence), or otherwise, will not exceed the amount the purchaser paid to HES for the products (including, without limitation, incidental or consequential damages, damages for lost profits or business interruption, and punitive damages).

**NO THIRD PARTY LIABILITY** If the purchaser uses the HES Products on behalf of others or provides to others any products referenced herein, the HES Parties shall have no liability to such persons whatsoever, and the purchaser agree to defend and indemnify the HES Parties from any and all claims and demands asserted against them, and from any legal fees, costs and other expenses that the HES Parties incur therewith.



The ASSA ABLOY Group is the global leader in access solutions. Every day we help people feel safe, secure and experience a more open world.



## USA

800 626 7590 | f. 866 582 4641 | [hesinnovations.com](https://hesinnovations.com)  
[customerservice.hes@assaabloy.com](mailto:customerservice.hes@assaabloy.com)  
[techsupport.hes@assaabloy.com](mailto:techsupport.hes@assaabloy.com)  
[orders.hes@assaabloy.com](mailto:orders.hes@assaabloy.com)

## CANADA

800 461 3007 | f. 800 461 8989 | [assaabloydss.ca](https://assaabloydss.ca)  
[sales.dss.ca@assaabloy.com](mailto:sales.dss.ca@assaabloy.com)  
[orders.dss.ca@assaabloy.com](mailto:orders.dss.ca@assaabloy.com)

Printed in the U.S. A.

Patent pending and/or patent [www.assaabloydss.com/patents](https://www.assaabloydss.com/patents)

Copyright © 2023, Hanchett Entry Systems, Inc., an ASSA ABLOY Group company. All rights reserved. Reproduction in whole or in part without the express written permission of Hanchett Entry Systems, Inc. is prohibited. HES-115-0323