



Advertise Date: Friday, September 15, 2023

Lee County Board of County Commissioners
DIVISION OF PROCUREMENT MANAGEMENT

Request for Information (RFI)

RFI No.:	RFI230515KLB		
RFI Name:	Migration of Current Fiber Transport System		
Submission Deadline			
Date/Time:	Monday, October 16, 2023	Time:	2:30 PM
Location:	Lee County Procurement Management 2115 Second Street, 1st Floor Fort Myers, FL 33901		
Procurement Contact:	Kacey Bell	Title	Procurement Analyst
Phone:	(239) 533-8835	Email:	kbell@leegov.com
Requesting Dept.	Technology Services		

All Request for Information documents are available for download at www.leegov.com/procurement



Notice to / Vendor / Respondent

REQUEST FOR INFORMATION (RFI)

Lee County, Florida, is requesting information from qualified individuals/firms for:

RFI230515KLB - Migration of Current Fiber Transport

TABLE OF CONTENTS

- 1. GENERAL INFORMATION**
 - a. Request for Information Process**
 - b. Background**
 - c. Purpose**
- 2. RFI RESPONSE INSTRUCTIONS**
- 3. PUBLIC RECORDS EXEMPTIONS, TRADE SECRET OR PROPRIETARY INFORMATION**
- 4. RESPONSE SUBMISSION**
- 5. COSTS**
- 6. QUESTIONS**

Sincerely,

A handwritten signature in blue ink, appearing to read "Robin Dennard", with a long horizontal line extending to the right.

Robin Dennard, CPPB
Procurement Manager

*WWW.LeeGov.Com/Procurement is the County's official posting site

REMAINDER OF PAGE INTENTIONALLY LEFT BLANK

1. GENERAL INFORMATION

A. Request for Information (RFI) Process

This RFI is issued for planning purposes by Lee County Procurement Management Department to solicit information regarding available providers for the services described herein.

An RFI is not a method of procurement. Responses to an RFI are not offers and shall not be accepted by Lee County to form a binding Agreement. This RFI and Responses to it shall not result in the execution of an Agreement with Lee County. By submitting a Response to this RFI, a Vendor is not prohibited from responding to any related subsequent solicitation. This RFI may be used for purposes of researching general, special, and/or technical specifications for a solicitation. Lee County reserves the right to utilize the information gathered through the RFI process to develop a scope of services, which may be incorporated into a contract using an approved method of procurement.

Respondents who reply to this RFI may be invited to present their ideas in person to County representatives. An invitation to present in person does not prohibit a Vendor from responding to any related subsequent solicitation.

B. Background

The County currently uses three different methods to transport data and telecom services: DWDM, SONET and dark fiber. DWDM is the core of the transport network and provides 10Gbps and 1Gbps data service at only five locations. SONET technology was first introduced to the County back in 2004 and is used to transport T1s for the County's Telecom network. SONET is also used to provide minor data circuits for County Network needs and redundancy for the Public Safety radio network and is available at 42 locations. Lee County IT owns three rings of 48 count dark fiber that supports DWDM, SONET and other agencies such as LCSO, LMHS, LCPA, E911 and COFM and has become saturated as the County has grown. While each transport method used today has proven to be an excellent way of providing services, the County's growth and increased data service needs have exhausted the transport Network's capability and dark fiber resources.

Though the DWDM platform can offer higher bandwidth circuits, 1Gbps, DWDM facilities are only available at 5 locations -

1. Justice Center – 1700 Monroe Street, Fort Myers, FL, 33901
2. Emergency Operations Center (EOC) – 2675 Ortiz Ave., Fort Myers, FL, 33905
3. Evidence Locker – 10070 Intercom Drive, Fort Myers, FL 33912
4. LCSO Head Quarters – 14750 Six Mile Cypress Parkway, Fort Myers FL 33912
5. Cape Coral Emergency Operations Center (EOC) – 1115 SE 9th Ave., Cape Coral, FL 33990

The SONET network is an OC 48 platform, 2.48 Gbps total bandwidth. It was originally built to deliver T1s (1.728 Mbps) to support the telecom network. As data needs increased over time, greater circuits were built on this network ranging from 10 – 150 Mbps to support various data needs. Due to the limited overall bandwidth, the network is not capable of supporting multiple circuits requiring 1 Gbps bandwidth. Lee County IT has SONET facilities at 42 locations across the County. Recent demands have been for greater circuit bandwidth at locations outside the existing 42.

Limitations of both the DWDM and SONET networks led to an increased demand for dark fiber by County agencies and partner organizations. Of the three rings of 48 count fiber owned by Lee County IT, Zone 1 is the most saturated and has limited free pairs left. As of now, there are no plans to lay more fiber in the ground and this is part of the reason a Network upgrade is needed. Using what's left of available fiber to build a Network with increased bandwidth capacity seems to be the most economical option to meet immediate data needs.

Lee County IT is faced with the challenge of demand for greater bandwidth at more locations as the County grows. Updating an outdated transport network will prove key in meeting existing and future needs. Advancements in network transport technology have made increased bandwidths available at economical prices over the same fiber resources. Improvements in Network Transport will allow Lee County IT to recoup dark fiber by providing services to customers that were not available in the past. Telecom delivery has also changed from T1s to data circuits which is another strain on the existing infrastructure and reason to upgrade.

The Lee County Emergency Center which houses the Lee County Data Center completed in 2012 has a new project to expand its services by 2025 and will continue to be the core location for the growing BoCC network for both voice and data services. The new fiber transport services shall continue to provide a path consistent with the future of communications and allows for the growth of the Lee County IT services. The Lee County fiber backbone requires faster up to date facilities to continue to add County facilities to the fiber network reducing costs paid to various carriers for connectivity back to the network making the County more self-sufficient.

C. Purpose

In preparation for an upcoming procurement, Lee County is seeking information from Vendors to understand availability and provide an avenue to migrate the County's current fiber transport services while reducing the overall cost without sacrificing service and reliability. The County is aggressively looking at improving the networks efficiency and performance while keeping our technology on the cutting edge.

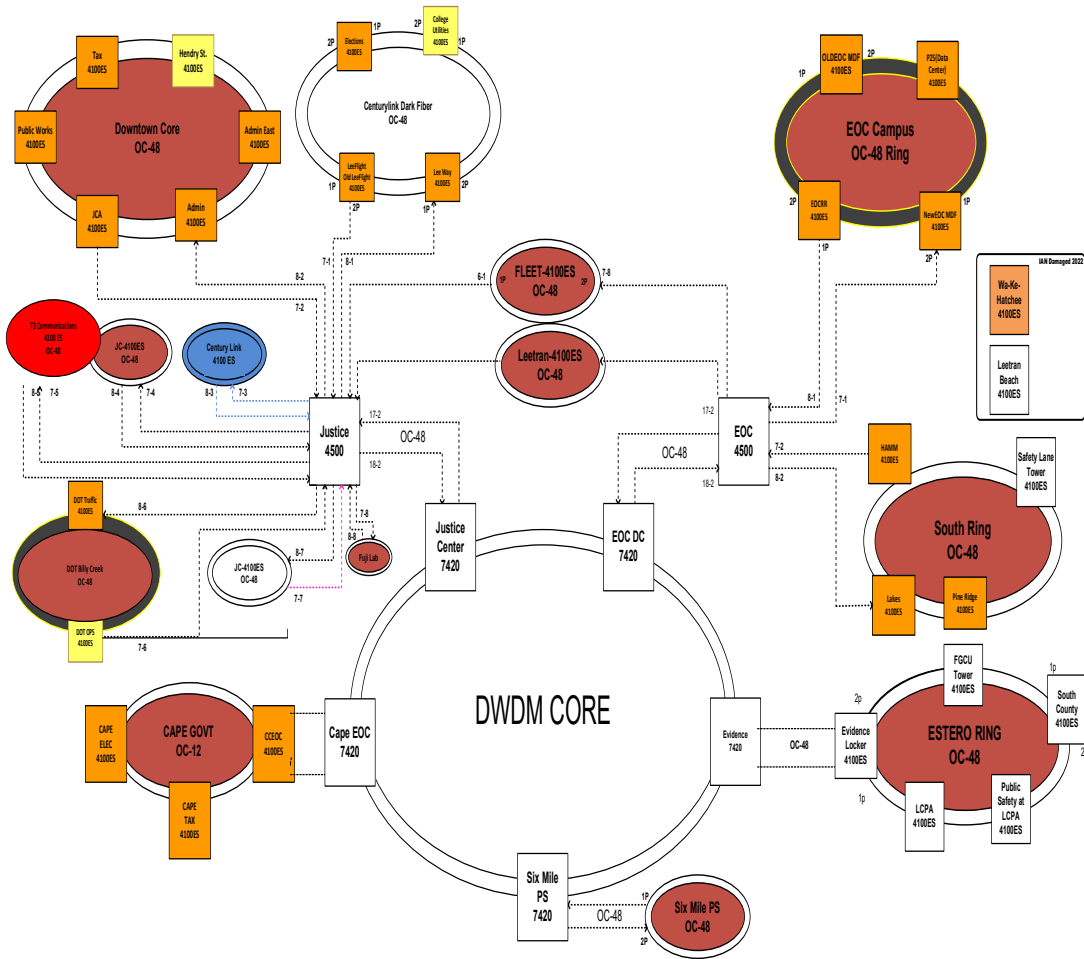
Lee County Basic Requirements

- Best design concept – ring versus hub and spoke or any newer approach
- Connection-Oriented Ethernet (COE), hybrid or equivalent
- Reliability and availability – fully redundant
- Best Technical Solution – Product & Roadmap
- Meeting all bandwidth and end user product requirements with a single transport platform
- ROI – 36 month or less
 - Reduce dependency on leased services
 - Immediate OPEX savings
 - Enable converged communications services among other Lee County departments/entities
- Ease of Operations – complete end-to-end network management and provision tool included with the solution. Mgmt. Tool should have or allow for automations, proactive alert monitoring, and trend reporting

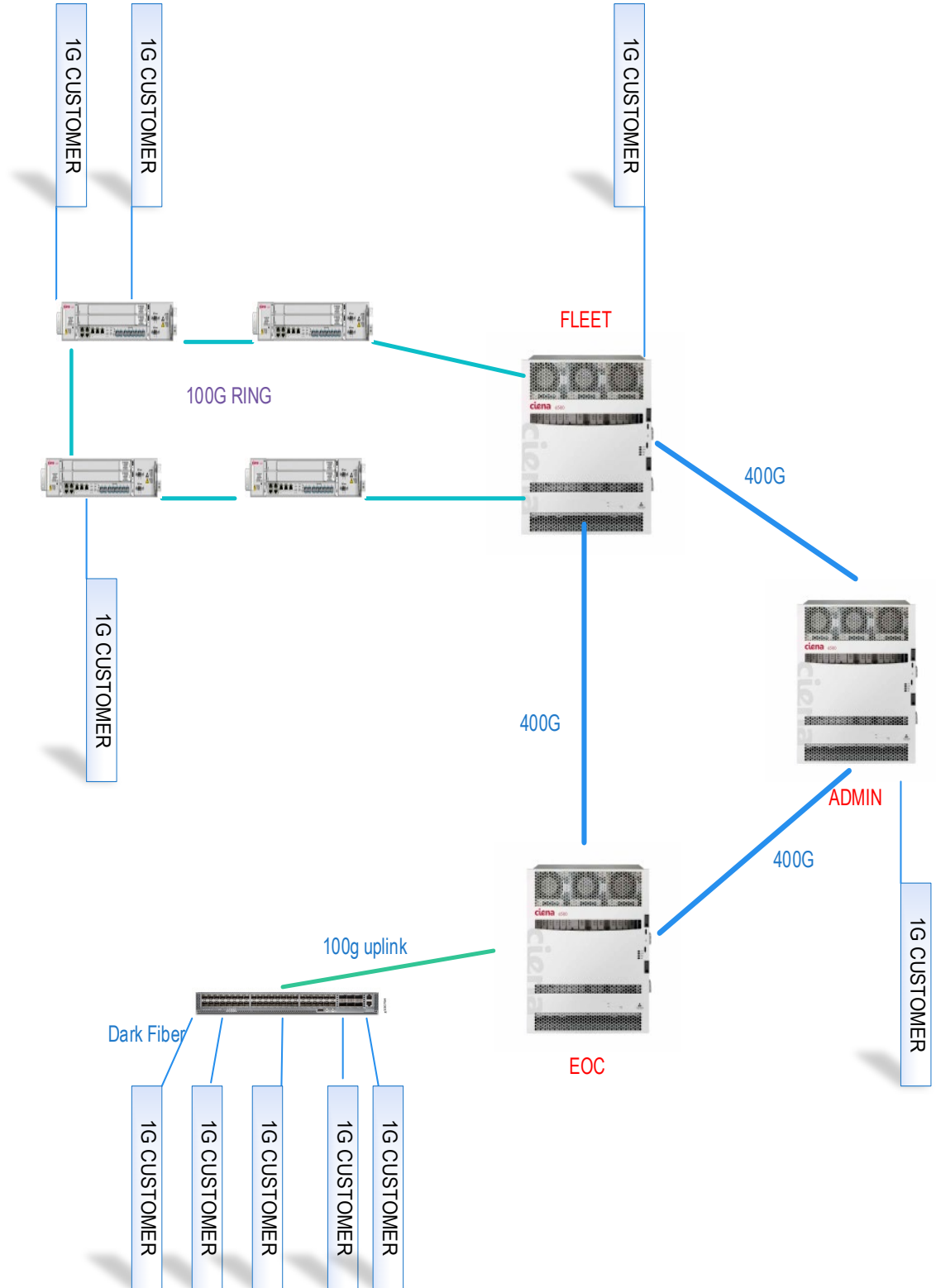
- Create new rings or similar redundant path on a new Converged the County's data and telephone network/services to continue support of
 - 55 critical asset sites for Phase 1
 - Approximately 178 access sites total with 10 or 50 Mbps to each site
 - Five core sites (EOC, Justice Center, Evidence, Cape EOC, Six Mile) with DWDM
- Enhance the Existing CORE bandwidth from 2-OC-48 to a min of 400Gigabytes
- Enhance Edge Data Network Delivery for any location to a min of 1Gb to 10Gb max
- Review of existing County Fiber Infrastructure will be required, please provide an approach

REMAINDER OF PAGE INTENTIONALLY LEFT BLANK

Current Transport Network
 ITG Fujitsu DWDM & SONET Transport Network
 Edited Adam Boissiere 8/2023



Current Transport Network



2. RFI Response Instructions

Respondents to this RFI are asked to be thorough, but concise. The RFI Response should include the following:

- a. The Respondent's name; place of business address(s); web site address, if applicable; and contact information, including representative name and alternate, with telephone number(s) and e-mail address(es).
- b. A description of how the Respondent's approach will fulfill the County's purpose as described herein. The description should also identify known or potential concerns with the approach.

3. Public Records Exemptions, Trade Secret or Proprietary Information

Any portion of the submitted Response which is asserted to be exempt from disclosure under Chapter 119, Florida Statutes, shall be clearly marked "exempt", "confidential", or "trade secret" (as applicable) and shall also contain the statutory basis for such claim on every page. Pages containing trade secret shall be marked "trade secret as defined in Section 812.081, Florida Statutes". Failure to segregate and identify such portions shall constitute a waiver of any claimed exemption and the County will provide such records in response to public records requests without notifying the Respondent. Designating material simply as "proprietary" will not necessarily protect it from disclosure under Chapter 119, Florida Statute. An entire Response should not be considered trade secret. Respondents who fail to identify trade secret as directed herein acknowledge and agree that they waive any right or cause of action, civil or criminal, against the County, its employees, and its representatives, for the release or disclosure of trade secret information not so identified.

4. Response Submission

Respondents to this RFI shall submit one (1) electronic copy of its response. The electronic format shall be submitted via e-mail. The software used to produce the electronic files must be Microsoft Word 2013 and/or Excel 2013 or newer. The electronic files must be appropriately named.

The Respondent shall also submit via e-mail one (1) electronic redacted copy of the Response suitable for release to the public. Any confidential or trade secret information covered under Section 812.081, Florida Statutes, should be either redacted or completely removed. The redacted Response shall be marked as the "redacted" copy and contain a transmittal letter authorizing release of the redacted version of the Response in the event the County received a public records request.

Responses to this RFI shall be provided no later than 2:30PM, Eastern Standard Time (EST), October 16, 2023. Responses shall be e-mailed to: kbell@leegov.com

Responses shall be addressed to:

Kacey Bell
Procurement Analyst
kbell@leegov.com

After the County has received all Responses to this RFI, the County, in its sole discretion, shall determine if a meeting with Respondents is necessary to clarify the information received. In the event the County decides to hold a meeting, the Respondent(s) will be notified via email.

5. Costs

Respondents are responsible for all costs associated with preparing a Response to this RFI. Lee County will not be responsible for any Respondent costs associated with preparing a Response to this RFI.

6. Questions

Questions concerning this RFI shall be submitted in writing no later than 5:00 PM, eight days prior to the response deadline, via email to: kbell@leegov.com

All County responses to questions received by the deadline for questions will be posted with this RFI on the County website.