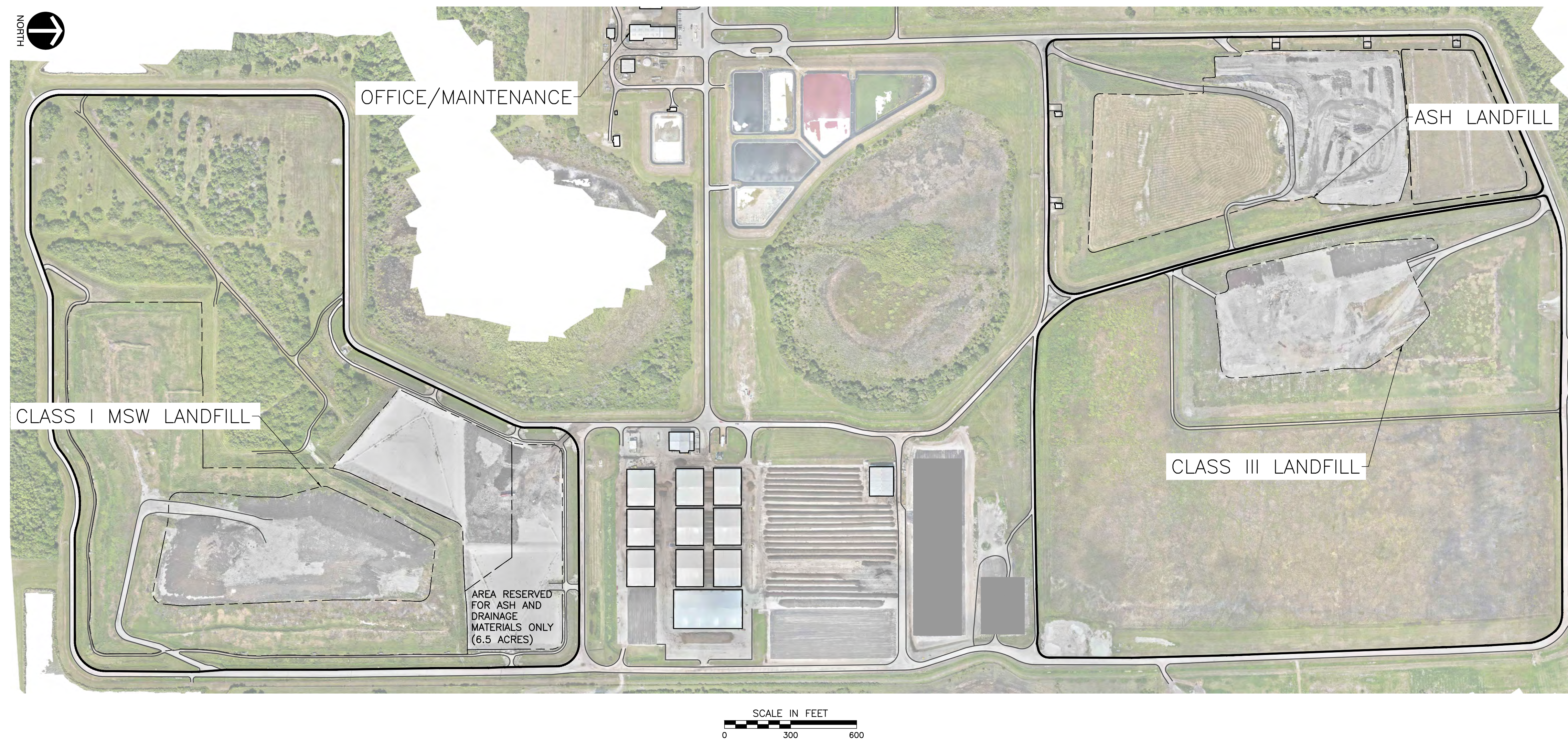


# LEE-HENDRY REGIONAL SOLID WASTE MANAGEMENT FACILITY

## LANDFILL OPERATION AREAS EXHIBITS

AUGUST 2024



AERIAL IMAGERY: APRIL 26, 2024

**SAFETY NOTE:**  
 CONTRACTOR SHALL BE SOLELY RESPONSIBLE FOR INITIATING, MAINTAINING AND SUPERVISING ALL SAFETY PRECAUTIONS AND PROGRAMS IN CONNECTION WITH THE WORK. CONTRACTOR SHALL COMPLY WITH ALL APPLICABLE LAWS AND REGULATIONS RELATING TO THE SAFETY OF PERSONS OR PROPERTY, OR TO THE PROTECTION OF PERSONS OR PROPERTY FROM DAMAGE, INJURY, OR LOSS; AND SHALL ERECT AND MAINTAIN ALL NECESSARY SAFEGUARDS FOR SUCH SAFETY AND PROTECTION.

NO.	DATE	DESCRIPTION

**LEE**  
**Civil & Environmental Consultants, Inc.**  
 117 Seaboard Lane · Suite E-100 · Franklin, TN 37067  
 615-333-7797 · 800-763-2326  
 www.cecinco.com

**LEE-HENDRY REGIONAL SOLID WASTE MANAGEMENT FACILITY**  
**LEE COUNTY, FL**



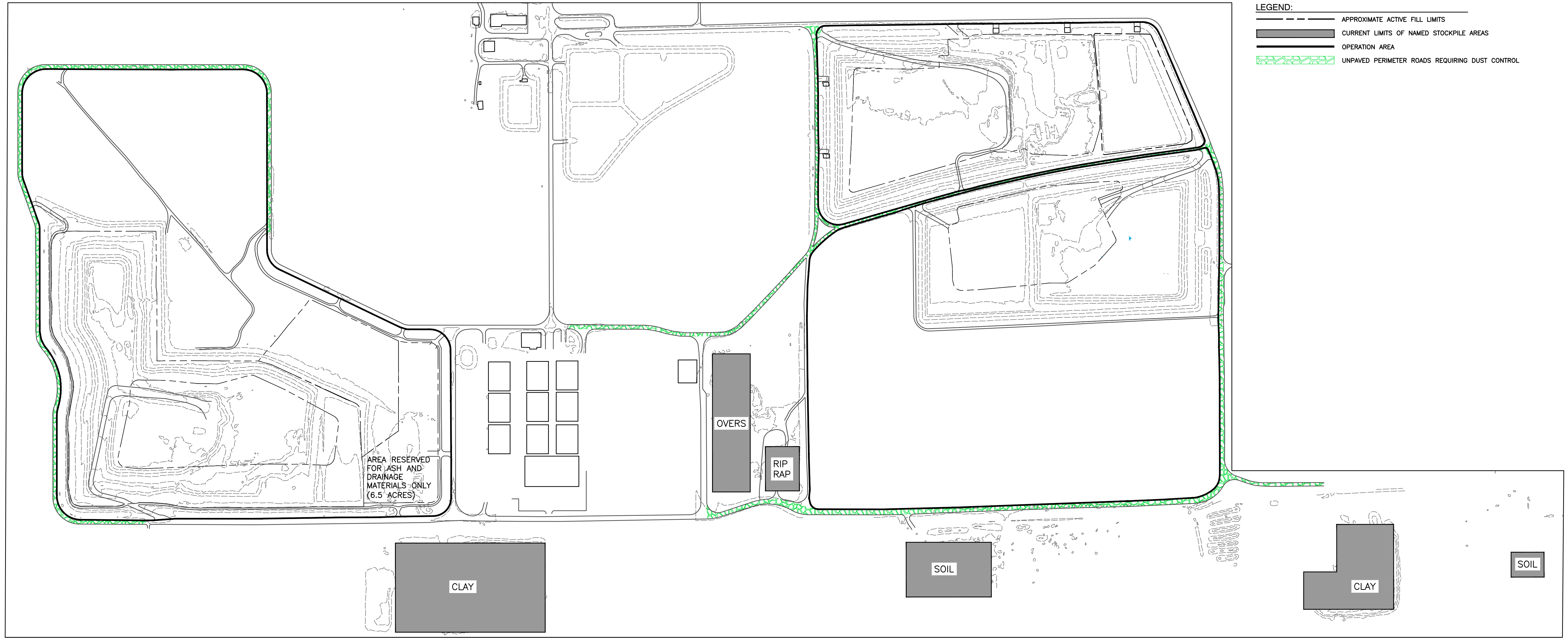
<b>COVER SHEET</b>	DATE:	AUGUST 2024	DRAWN BY:	AJW
	DWS SCALE:		CHECKED BY:	WCM
	PROJECT NO.:	398-154	APPROVED BY:	WCM

DRAWING NO.: **C000**

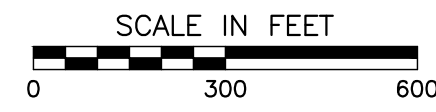
A:\130-0001\398-154\0000\Drawings\398154-Exhibits\mg\COMB1\_L5171512024 - EP\_7/22/2024 8:46 AM



# LANDFILL FACILITY - DUST CONTROL AND STOCKPILE EXHIBIT



- LEGEND:**
- APPROXIMATE ACTIVE FILL LIMITS
  - CURRENT LIMITS OF NAMED STOCKPILE AREAS
  - OPERATION AREA
  - UNPAVED PERIMETER ROADS REQUIRING DUST CONTROL



**SAFETY NOTE:**  
 CONTRACTOR SHALL BE SOLELY RESPONSIBLE FOR INITIATING, MAINTAINING AND SUPERVISING ALL SAFETY PRECAUTIONS AND PROGRAMS IN CONNECTION WITH THE WORK. CONTRACTOR SHALL COMPLY WITH ALL APPLICABLE LAWS AND REGULATIONS RELATING TO THE SAFETY OF PERSONS OR PROPERTY, OR TO THE PROTECTION OF PERSONS OR PROPERTY FROM DAMAGE, INJURY, OR LOSS; AND SHALL ERECT AND MAINTAIN ALL NECESSARY SAFEGUARDS FOR SUCH SAFETY AND PROTECTION.

### FACILITY - DUST CONTROL AND STOCKPILES

COMPANY RESPONSIBILITIES

1. DUST CONTROL OF UNPAVED PERIMETER ROADWAYS, ACTIVE AREAS ON THE LANDFILL UNITS, AND STOCKPILE AREAS.
2. LOAD AND HAUL DAILY, INTERMEDIATE AND INTERNAL LANDFILL ROAD CONSTRUCTION MATERIALS FROM DESIGNATED MATERIAL STOCKPILES TO LANDFILL UNIT OPERATION AREAS.
3. LITTER COLLECTION GENERATED FROM INBOUND TRASH TRUCKS AND LANDFILL UNITS.

EXCLUSIONS

1. MAINTENANCE OF UNPAVED PERIMETER ROADS
2. CHURCH ROAD EAST AND SOUTH LITTER COLLECTION

NO.	DATE	DESCRIPTION

**Civil & Environmental Consultants, Inc.**  
 117 Seaboard Lane · Suite E-100 · Franklin, TN 37067  
 615-333-7797 · 800-763-2326  
[www.cecinc.com](http://www.cecinc.com)

**LEE-HENDRY REGIONAL SOLID  
 WASTE MANAGEMENT FACILITY  
 LEE COUNTY, FL**



LANDFILL FACILITY - DUST CONTROL AND STOCKPILE

DATE: AUGUST 2024	DRAWN BY: AJW	CHECKED BY: WCM
DWG. SCALE:		PROJECT NO: 306-154
APPROVED BY:		WCM

**EX-1**

# LANDFILL OPERATION AREA - CLASS I EXHIBIT



## LANDFILL UNITS OPERATION AREA

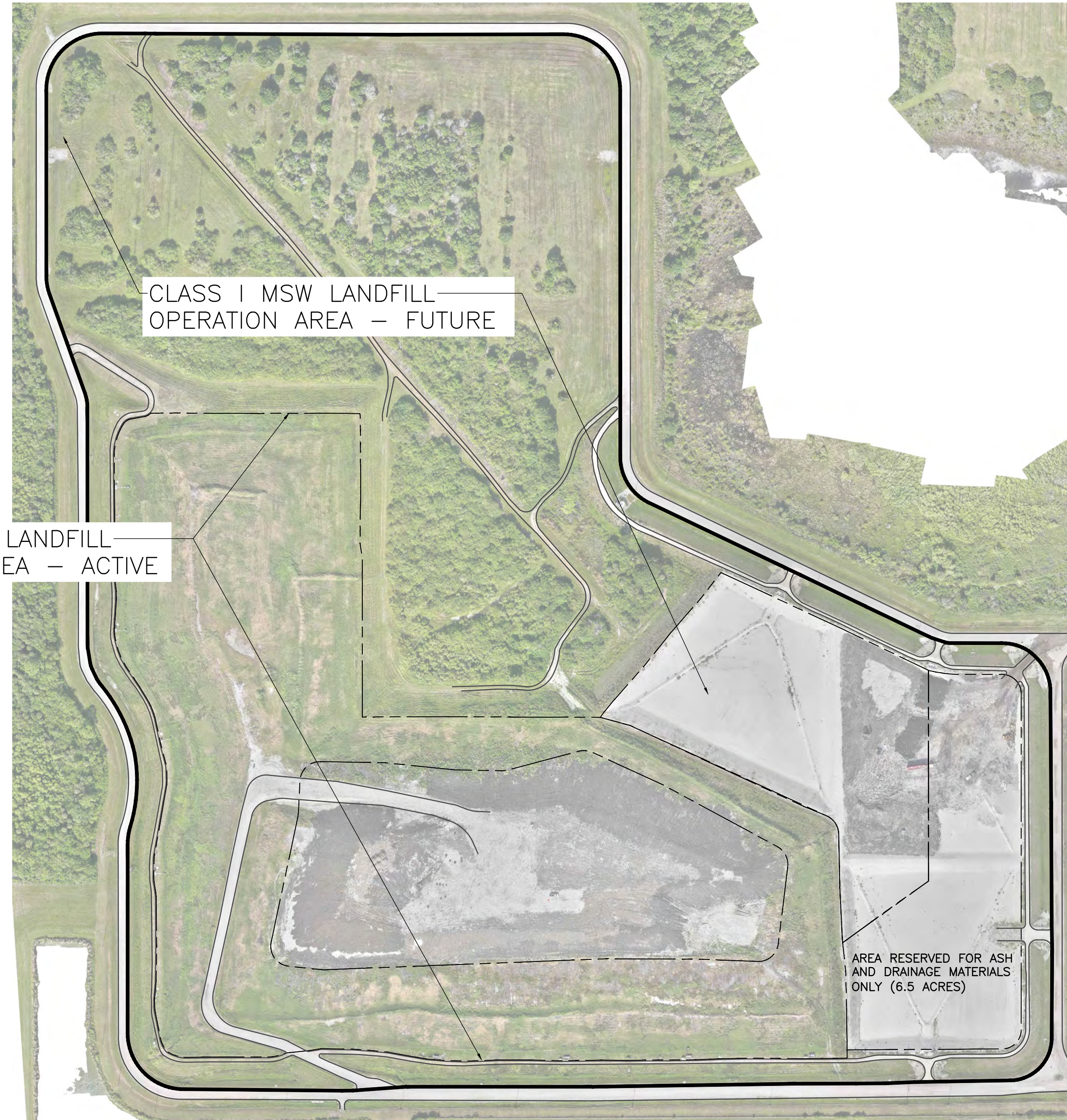
### COMPANY RESPONSIBILITIES

1. RECEIVING WASTE.
2. PUSH AND PACK WASTE.
3. CONSTRUCT AND MAINTAIN INTERNAL LANDFILL APPROACH ROADS.
4. MAINTAIN SLOPES AND GRADES.
5. LANDFILL MOWING INCLUDING DITCHES AND EXTENDING TO PERIMETER SITE ROADS.
6. WEED WHACKING AROUND PUMP STATIONS INCLUDING EXISTING AND FUTURE GROUNDWATER AND GAS WELL STICKUPS.
7. INSTALLATION AND MAINTENANCE OF DAILY AND INTERMEDIATE COVER SYSTEMS.
8. STORMWATER MANAGEMENT AND MAINTENANCE (INCLUDES DITCH CLEANOUT).
9. EROSION AND SEDIMENT CONTROL.
10. REPAIRS TO MAINTAIN COVER AND INTERNAL ROAD SYSTEMS.
11. DUST CONTROL OF INTERNAL LANDFILL APPROACH ROADS.
12. LITTER CONTROLS AND COLLECTION.
13. LOCALIZED SEEP AND OUTBREAK REPAIRS.

### EXCLUSIONS

1. OPERATE/MAINTAIN PUMP STATIONS/CLEANOUTS/ LEACHATE COLLECTION AND CONTROL SYSTEMS.
2. CULVERT SECTION JETTING AND CLEANOUT.
3. LANDFILL GAS COLLECTION SYSTEMS.
4. UNTIL AREAS ARE DEVELOPED FOR WASTE PLACEMENT, NO MOWING IS REQUIRED IN OVERGROWN UNDEVELOPED FUTURE LANDFILL FOOTPRINT AREAS.

CLASS I MSW LANDFILL OPERATION AREA - ACTIVE



**LEGEND:**  
 - - - - - APPROXIMATE ACTIVE FILL LIMITS  
 ——— OPERATION AREA

AERIAL IMAGERY: APRIL 26, 2024

**SAFETY NOTE:**  
 CONTRACTOR SHALL BE SOLELY RESPONSIBLE FOR INITIATING, MAINTAINING AND SUPERVISING ALL SAFETY PRECAUTIONS AND PROGRAMS IN CONNECTION WITH THE WORK. CONTRACTOR SHALL COMPLY WITH ALL APPLICABLE LAWS AND REGULATIONS RELATING TO THE SAFETY OF PERSONS OR PROPERTY, OR TO THE PROTECTION OF PERSONS OR PROPERTY FROM DAMAGE, INJURY, OR LOSS; AND SHALL ERECT AND MAINTAIN ALL NECESSARY SAFEGUARDS FOR SUCH SAFETY AND PROTECTION.



SUBMITTAL RECORD

NO	DATE	DESCRIPTION

**C&E**  
**Civil & Environmental Consultants, Inc.**  
 117 Seaboard Lane · Suite E-100 · Franklin, TN 37067  
 615-333-7797 · 800-763-2326  
 www.ceshinc.com

**LEE-HENDRY REGIONAL SOLID WASTE MANAGEMENT FACILITY  
 LEE COUNTY, FL**



**LANDFILL OPERATION AREA - CLASS I**

DATE:	AUGUST 2024	DRAWN BY:	AJW
DWS SCALE:		CHECKED BY:	WCM
PROJECT NO.:	396-154	APPROVED BY:	WCM

DRAWING NO.: **EX-2**



# LANDFILL OPERATION AREA - CLASS III EXHIBIT

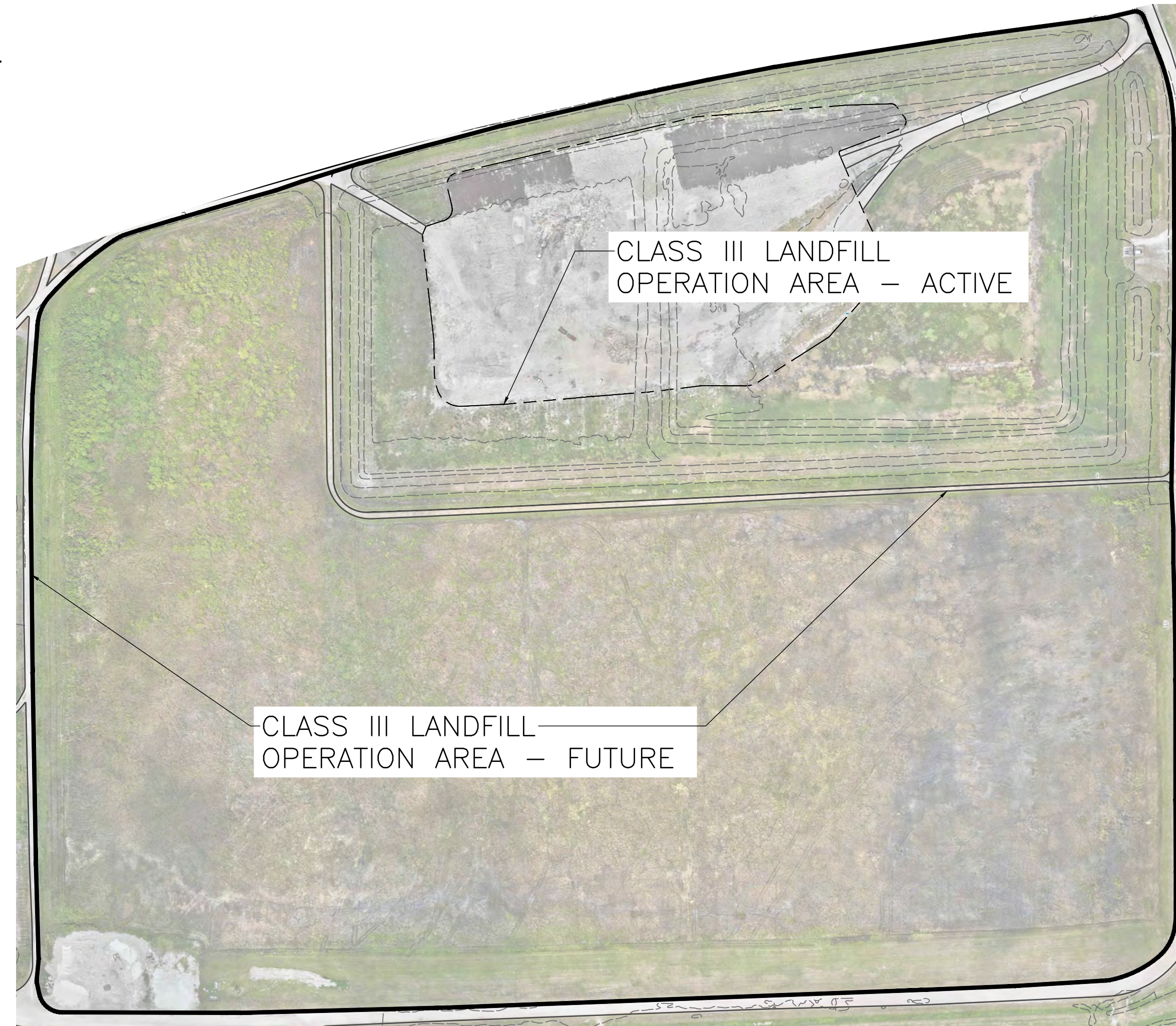
## LANDFILL UNITS OPERATION AREA

### COMPANY RESPONSIBILITIES

1. RECEIVING WASTE.
2. PUSH AND PACK WASTE.
3. CONSTRUCT AND MAINTAIN INTERNAL LANDFILL APPROACH ROADS.
4. MAINTAIN SLOPES AND GRADES.
5. LANDFILL MOWING INCLUDING DITCHES AND EXTENDING TO PERIMETER SITE ROADS.
6. WEED WHACKING AROUND PUMP STATIONS INCLUDING EXISTING AND FUTURE GROUNDWATER AND GAS WELL STICKUPS.
7. INSTALLATION AND MAINTENANCE OF DAILY AND INTERMEDIATE COVER SYSTEMS.
8. STORMWATER MANAGEMENT AND MAINTENANCE (INCLUDES DITCH CLEANOUT).
9. EROSION AND SEDIMENT CONTROL.
10. REPAIRS TO MAINTAIN COVER AND INTERNAL ROAD SYSTEMS.
11. DUST CONTROL OF INTERNAL LANDFILL APPROACH ROADS.
12. LITTER CONTROLS AND COLLECTION.
13. LOCALIZED SEEP AND OUTBREAK REPAIRS.

### EXCLUSIONS

1. OPERATE/MAINTAIN PUMP STATIONS/CLEANOUTS/ LEACHATE COLLECTION AND CONTROL SYSTEMS.
2. CULVERT SECTION JETTING AND CLEANOUT.
3. LANDFILL GAS COLLECTION SYSTEMS.
4. UNTIL AREAS ARE DEVELOPED FOR WASTE PLACEMENT, NO MOWING IS REQUIRED IN OVERGROWN UNDEVELOPED FUTURE LANDFILL FOOTPRINT AREAS.



**LEGEND:**  
 - - - - - APPROXIMATE ACTIVE FILL LIMITS  
 \_\_\_\_\_ OPERATION AREA

AERIAL IMAGERY: APRIL 26, 2024

**SAFETY NOTE:**  
 CONTRACTOR SHALL BE SOLELY RESPONSIBLE FOR INITIATING, MAINTAINING AND SUPERVISING ALL SAFETY PRECAUTIONS AND PROGRAMS IN CONNECTION WITH THE WORK. CONTRACTOR SHALL COMPLY WITH ALL APPLICABLE LAWS AND REGULATIONS RELATING TO THE SAFETY OF PERSONS OR PROPERTY, OR TO THE PROTECTION OF PERSONS OR PROPERTY FROM DAMAGE, INJURY, OR LOSS; AND SHALL ERECT AND MAINTAIN ALL NECESSARY SAFEGUARDS FOR SUCH SAFETY AND PROTECTION.

SCALE IN FEET  
 0 200 400

SUBMITTAL RECORD

NO. DATE DESCRIPTION

**CEE**  
**Civil & Environmental Consultants, Inc.**  
 117 Seaboard Lane · Suite E-100 · Franklin, TN 37067  
 615-333-7797 · 800-763-2326  
 www.ceeinc.com

**LEE-HENDRY REGIONAL SOLID WASTE MANAGEMENT FACILITY**  
**LEE COUNTY, FL**



LANDFILL OPERATION AREA - CLASS III

DATE: AUGUST 2024  
 DWG SCALE: AS SHOWN  
 PROJECT NO: 398-154  
 DRAWN BY: AJW  
 CHECKED BY: WCM  
 APPROVED BY: WCM

DRAWING NO. **EX-3**

A:\300-398-154-0000\Drawings\398154-Exhibit.mxd [E:\398-154-0000] - Lin 7/22/2024 9:46 AM



# LANDFILL OPERATION AREA - ASH MONOFILL EXHIBIT



**LEGEND:**

---	APPROXIMATE ACTIVE FILL LIMITS
———	OPERATION AREA

ASH LANDFILL OPERATION  
AREA - ACTIVE

ASH LANDFILL OPERATION  
AREA - FUTURE

**LANDFILL UNITS OPERATION AREA**

COMPANY RESPONSIBILITIES

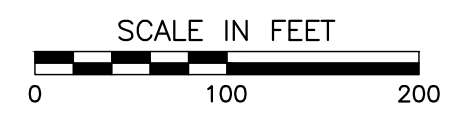
EXCLUSIONS

1. RECEIVING WASTE.
2. PUSH AND PACK WASTE.
3. CONSTRUCT AND MAINTAIN INTERNAL LANDFILL APPROACH ROADS.
4. MAINTAIN SLOPES AND GRADES.
5. LANDFILL MOWING INCLUDING DITCHES AND EXTENDING TO PERIMETER SITE ROADS.
6. WEED WHACKING AROUND PUMP STATIONS INCLUDING EXISTING AND FUTURE GROUNDWATER AND GAS WELL STICKUPS.
7. INSTALLATION AND MAINTENANCE OF DAILY AND INTERMEDIATE COVER SYSTEMS.
8. STORMWATER MANAGEMENT AND MAINTENANCE (INCLUDES DITCH CLEANOUT).
9. EROSION AND SEDIMENT CONTROL.
10. REPAIRS TO MAINTAIN COVER AND INTERNAL ROAD SYSTEMS.
11. DUST CONTROL OF INTERNAL LANDFILL APPROACH ROADS.
12. LITTER CONTROLS AND COLLECTION.
13. LOCALIZED SEEP AND OUTBREAK REPAIRS.

1. OPERATE/MAINTAIN PUMP STATIONS/CLEANOUTS/ LEACHATE COLLECTION AND CONTROL SYSTEMS.
2. CULVERT SECTION JETTING AND CLEANOUT.
3. LANDFILL GAS COLLECTION SYSTEMS.
4. UNTIL AREAS ARE DEVELOPED FOR WASTE PLACEMENT, NO MOWING IS REQUIRED IN OVERGROWN UNDEVELOPED FUTURE LANDFILL FOOTPRINT AREAS.


AERIAL IMAGERY: APRIL 26, 2024

**SAFETY NOTE:**  
CONTRACTOR SHALL BE SOLELY RESPONSIBLE FOR INITIATING, MAINTAINING AND SUPERVISING ALL SAFETY PRECAUTIONS AND PROGRAMS IN CONNECTION WITH THE WORK. CONTRACTOR SHALL COMPLY WITH ALL APPLICABLE LAWS AND REGULATIONS RELATING TO THE SAFETY OF PERSONS OR PROPERTY, OR TO THE PROTECTION OF PERSONS OR PROPERTY FROM DAMAGE, INJURY, OR LOSS; AND SHALL ERECT AND MAINTAIN ALL NECESSARY SAFEGUARDS FOR SUCH SAFETY AND PROTECTION.



**SUBMITTAL RECORD**

NO.	DATE	DESCRIPTION



**Civil & Environmental Consultants, Inc.**  
117 Seaboard Lane - Suite E-100 - Franklin, TN 37067  
615-333-7797 - 800-763-2326  
www.cecinc.com

**LEE-HENDRY REGIONAL SOLID WASTE MANAGEMENT FACILITY  
LEE COUNTY, FL**

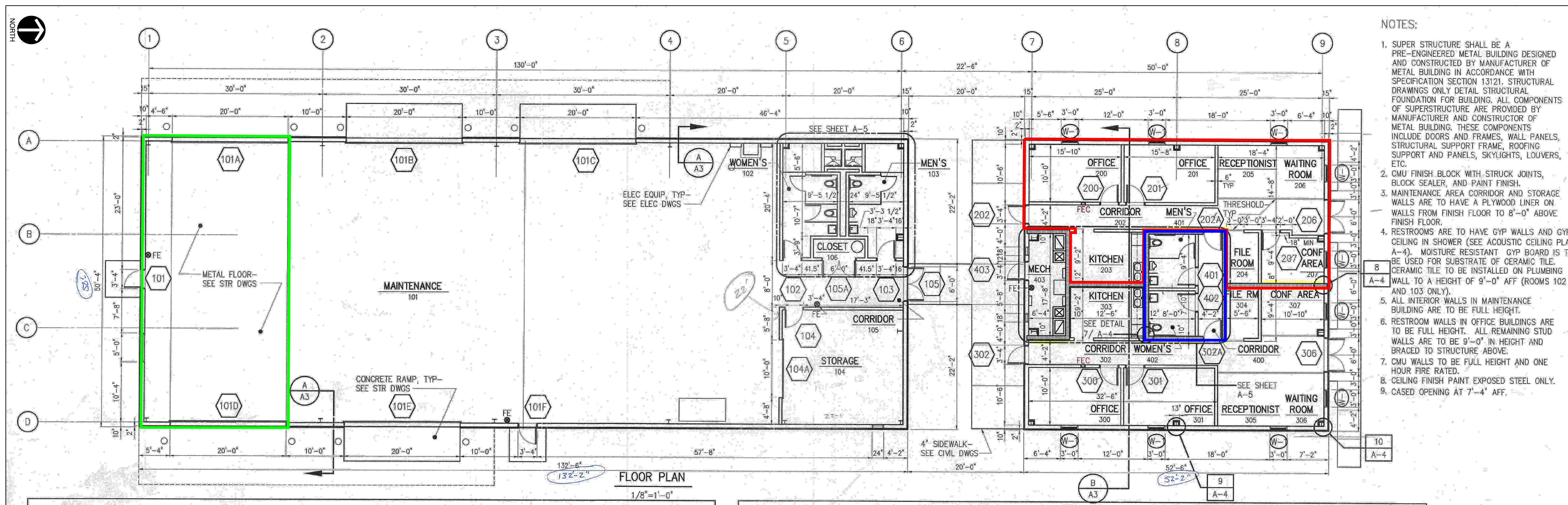


<b>LANDFILL OPERATION AREA - ASH MONOFILL</b>	
DATE: AUGUST 2024	DRAWN BY: AJW
DWS SCALE:	WCM
PROJECT NO: 396-154	CHECKED BY:
APPROVED BY:	WCM

DRAWING NO.: **EX-4**

A:\130-1301\1301-154-1-0000\Drawings\130154-Exhibit\154-Exhibit.dwg (17/15/2024) - 7/22/2024 9:48 AM

# LANDFILL OFFICE AND MAINTENANCE AREA



- LEGEND:**
- EXTENTS OF COMPANY OFFICE AREA
  - SHARED RESTROOMS
  - STORAGE AND MAINTENANCE AREA

**NOTES:**

1. SUPER STRUCTURE SHALL BE A PRE-ENGINEERED METAL BUILDING DESIGNED AND CONSTRUCTED BY MANUFACTURER OF METAL BUILDING IN ACCORDANCE WITH SPECIFICATION SECTION 13121. STRUCTURAL DRAWINGS ONLY DETAIL STRUCTURAL FOUNDATION FOR BUILDING. ALL COMPONENTS OF SUPERSTRUCTURE ARE PROVIDED BY MANUFACTURER AND CONSTRUCTOR OF METAL BUILDING. THESE COMPONENTS INCLUDE DOORS AND FRAMES, WALL PANELS, STRUCTURAL SUPPORT FRAME, ROOFING SUPPORT AND PANELS, SKYLIGHTS, LOUVERS, ETC.
2. CMU FINISH BLOCK WITH STRUCK JOINTS, BLOCK SEALER, AND PAINT FINISH.
3. MAINTENANCE AREA CORRIDOR AND STORAGE WALLS ARE TO HAVE A PLYWOOD LINER ON WALLS FROM FINISH FLOOR TO 8'-0" ABOVE FINISH FLOOR.
4. RESTROOMS ARE TO HAVE GYP WALLS AND GYP CEILING IN SHOWER (SEE ACOUSTIC CEILING PLAN A-4). MOISTURE RESISTANT GYP BOARD IS TO BE USED FOR SUBSTRATE OF CERAMIC TILE. CERAMIC TILE TO BE INSTALLED ON PLUMBING WALL TO A HEIGHT OF 9'-0" AFF (ROOMS 102 AND 103 ONLY).
5. ALL INTERIOR WALLS IN MAINTENANCE BUILDING ARE TO BE FULL HEIGHT.
6. RESTROOM WALLS IN OFFICE BUILDINGS ARE TO BE FULL HEIGHT. ALL REMAINING STUD WALLS ARE TO BE 9'-0" IN HEIGHT AND BRACED TO STRUCTURE ABOVE.
7. CMU WALLS TO BE FULL HEIGHT AND ONE HOUR FIRE RATED.
8. CEILING FINISH PAINT EXPOSED STEEL ONLY.
9. CASED OPENING AT 7'-4" AFF.

**FLOOR PLAN**  
1/8"=1'-0"

## LANDFILL OFFICE AND MAINTENANCE AREA

### COMPANY RESPONSIBILITIES

1. CLEAN AND MAINTAIN ASSIGNED OFFICE SPACE AND MAINTENANCE AREA.
2. RECEIVE AND STORE COMPANY ORDERED PARTS AND INVENTORY DELIVERED TO THE SITE.
3. SUPPLY ALL COMPANY CONSUMABLES AND CLEANING PRODUCTS NEEDED TO MAINTAIN THE OFFICE SPACE AND MAINTENANCE AREA AND USED BY STAFF.
4. PORTABLE CELL AND CB RADIO COMMUNICATIONS.
5. INTERNET SERVICE.
6. GASOLINE AND DIESEL FUEL FOR COMPANY VEHICLES AND EQUIPMENT OPERATIONS.
7. PROVIDE POTABLE DRINKING WATER.
8. PROVIDE PHONE LANDLINE SERVICE TO COMPANY OFFICE AREA.

### EXCLUSIONS

1. ELECTRIC.

FLOOR PLAN FROM HAZEN AND SAWYER ENVIRONMENTAL ENGINEERS AND SCIENTISTS DATED MAY 2002.

**SAFETY NOTE:**  
CONTRACTOR SHALL BE SOLELY RESPONSIBLE FOR INITIATING, MAINTAINING AND SUPERVISING ALL SAFETY PRECAUTIONS AND PROGRAMS IN CONNECTION WITH THE WORK. CONTRACTOR SHALL COMPLY WITH ALL APPLICABLE LAWS AND REGULATIONS RELATING TO THE SAFETY OF PERSONS OR PROPERTY, OR TO THE PROTECTION OF PERSONS OR PROPERTY FROM DAMAGE, INJURY, OR LOSS; AND SHALL ERECT AND MAINTAIN ALL NECESSARY SAFEGUARDS FOR SUCH SAFETY AND PROTECTION.

SUBMITTAL RECORD

**Civil & Environmental Consultants, Inc.**  
 117 Seaboard Lane · Suite E-100 · Franklin, TN 37067  
 615-333-7797 · 800-763-2326  
 www.cechinc.com

**LEE-HENDRY REGIONAL SOLID WASTE MANAGEMENT FACILITY**  
**LEE COUNTY, FL**



DATE:	AUGUST 2024	DRAWN BY:	AJM
DWG SCALE:		CHECKED BY:	WCM
PROJECT NO.:	396-154	APPROVED BY:	WCM

DRAWING NO. **EX-5**

A:\130-2001\130-1541-0000\Draw\130154-Exhibit\DWG\EX-5.dwg - 1/17/2024 9:46 AM