

Orange Blossom Dr

Boring and trenching around the intersection will be up to 10 FT deep.

Mast arm foundations will be 20 FT - 25 FT deep on all 4 corners

Lat 26.33139527
Lon -81.76277501

Lat 26.33139349
Lon -81.7623943

Bonita Beach Rd SE

865

Bonita Beach Rd SE

865

865

BONITA BEACH RD & IMPERIAL PKWY

Bonita Beach Rd SE

865

Bonita Beach Rd SE

865

865

Lat 26.33091031
Lon -81.76275929

Lat 26.33091073
Lon -81.76232133

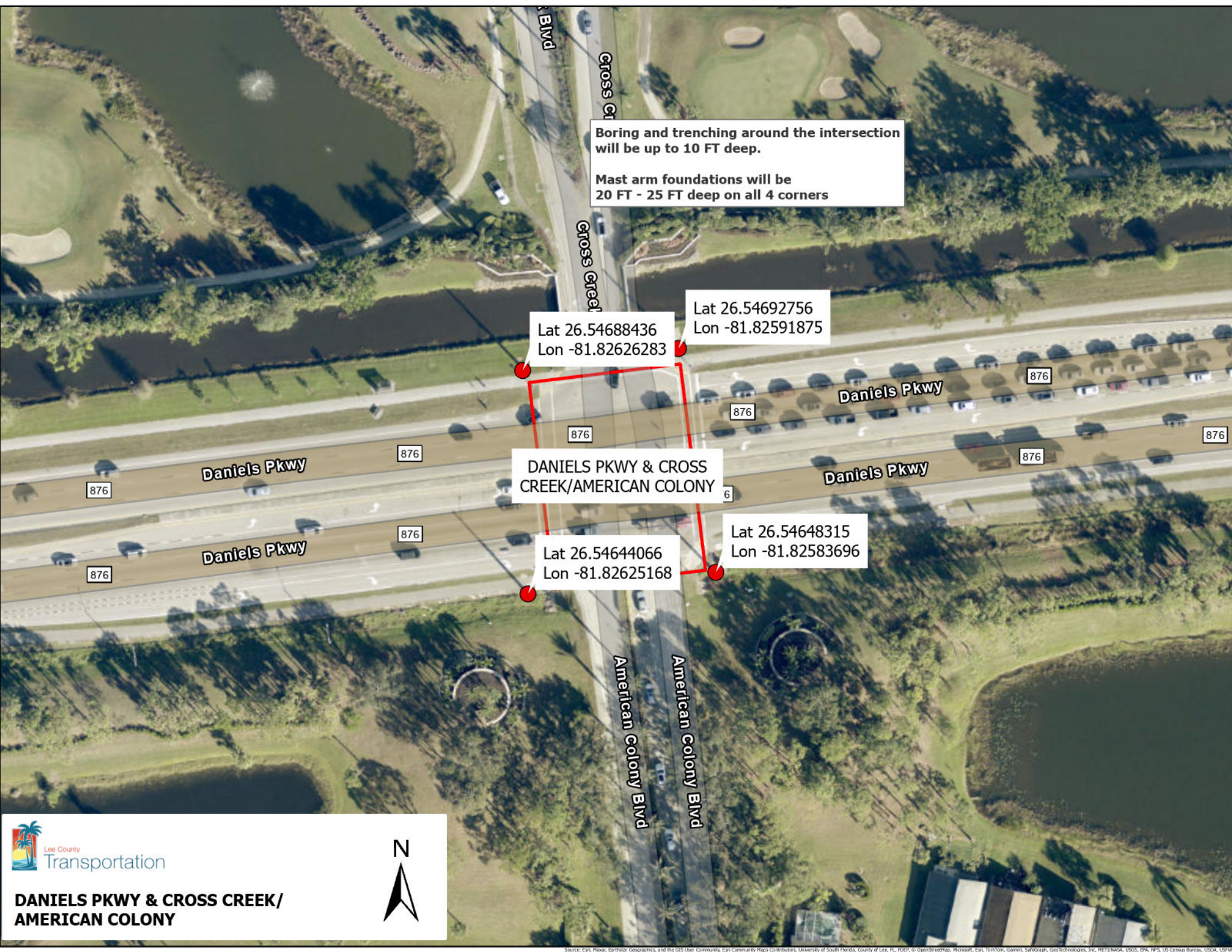
Imperial Pkwy

Imperial Pkwy



BONITA BEACH RD & IMPERIAL PKWY





Boring and trenching around the intersection will be up to 10 FT deep.
Mast arm foundations will be 20 FT - 25 FT deep on all 4 corners

Lat 26.54688436
Lon -81.82626283

Lat 26.54692756
Lon -81.82591875

DANIELS PKWY & CROSS CREEK/AMERICAN COLONY

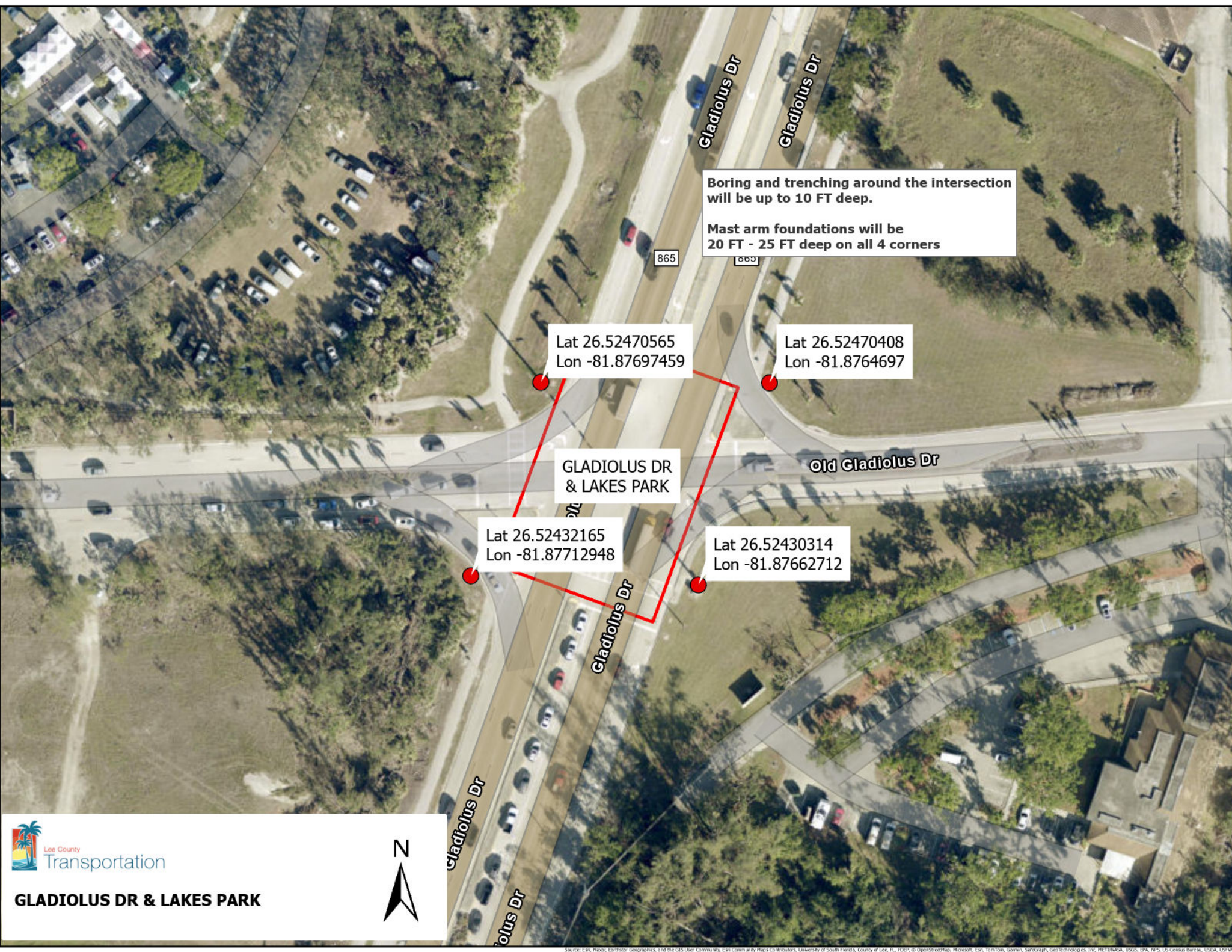
Lat 26.54644066
Lon -81.82625168

Lat 26.54648315
Lon -81.82583696



**DANIELS PKWY & CROSS CREEK/
AMERICAN COLONY**





Boring and trenching around the intersection will be up to 10 FT deep.

Mast arm foundations will be 20 FT - 25 FT deep on all 4 corners

Lat 26.52470565
Lon -81.87697459

Lat 26.52470408
Lon -81.8764697

GLADIOLUS DR
& LAKES PARK

Lat 26.52432165
Lon -81.87712948

Lat 26.52430314
Lon -81.87662712



GLADIOLUS DR & LAKES PARK



Boring and trenching around the intersection will be up to 10 FT deep.

Mast arm foundations will be 20 FT - 25 FT deep on all NE & NW corners

Lat 26.60391723
Lon -81.61232723

Lat 26.60399685
Lon -81.61216384

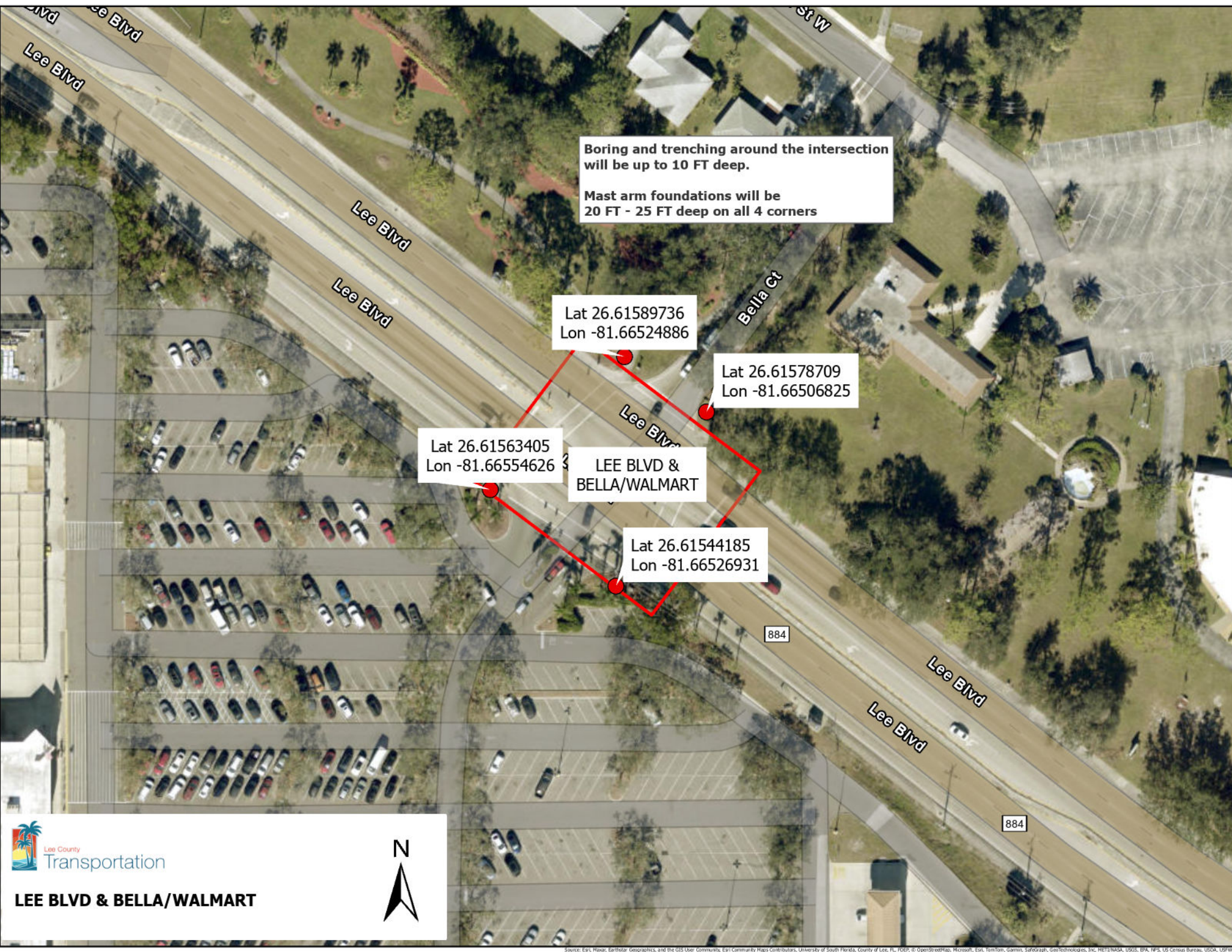
JOEL BLVD &
BELL BLVD

Donna J
Beasley
Technical
Academy



JOEL BLVD & BELL BLVD





Boring and trenching around the intersection will be up to 10 FT deep.
Mast arm foundations will be 20 FT - 25 FT deep on all 4 corners

Lat 26.61589736
Lon -81.66524886

Lat 26.61578709
Lon -81.66506825

Lat 26.61563405
Lon -81.66554626

LEE BLVD & BELLA/WALMART

Lat 26.61544185
Lon -81.66526931



LEE BLVD & BELLA/WALMART



Boring and trenching around the intersection will be up to 10 FT deep.
Mast arm foundations will be 20 FT - 25 FT deep on all 4 corners

Lat 26.61709335
Lon -81.71491138

Lat 26.61710557
Lon -81.71457263

LEE BLVD &
GUNNERY RD

Lat 26.61668662
Lon -81.71494109

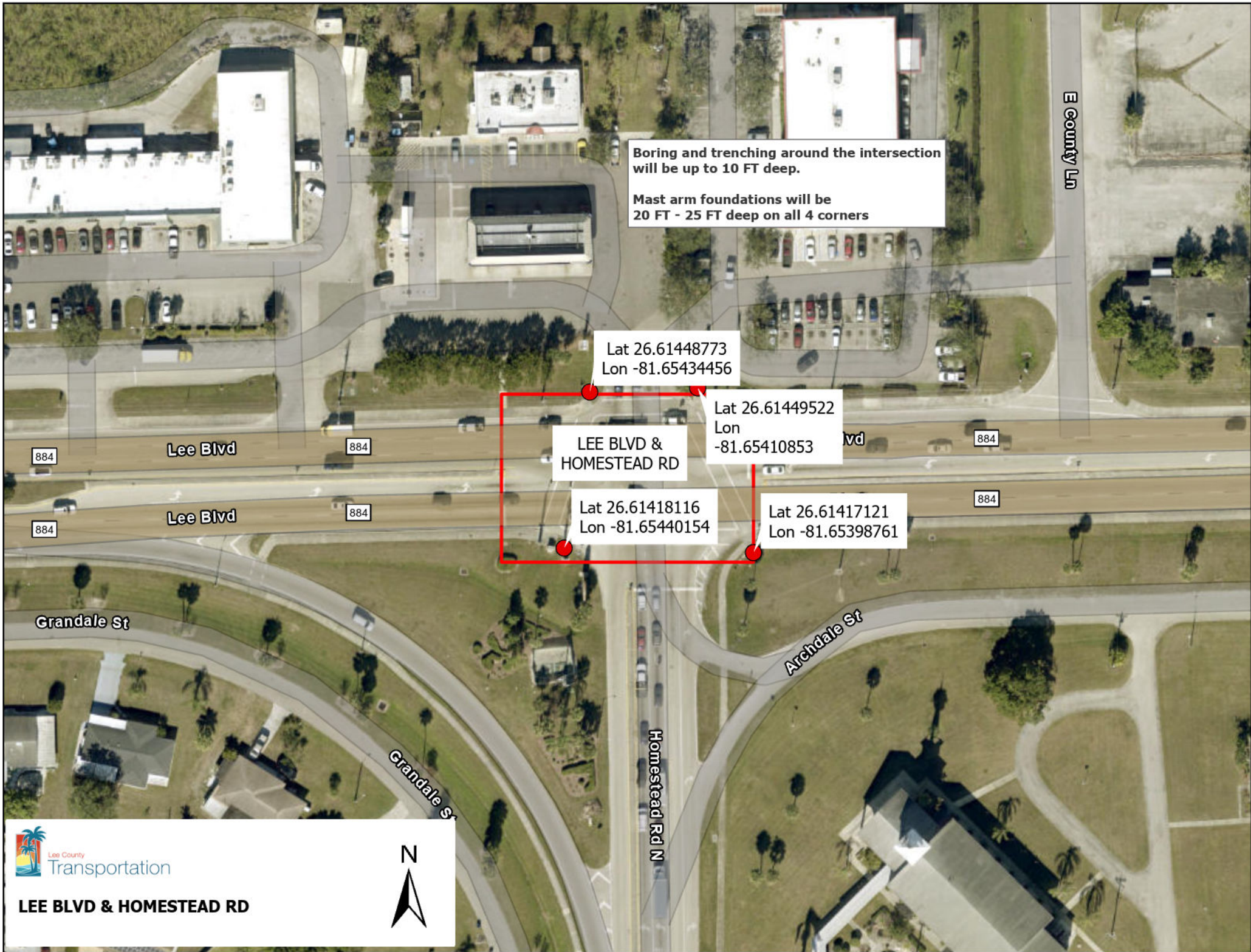
Lat 26.61668834
Lon -81.71451052



LEE BLVD & GUNNERY RD



Source: Esri, Navar, Earthstar, Geographics, and the GIS User Community; Esri Community Maps Contributors, University of South Florida, County of Lee, FL, POB, © OpenStreetMap, Microsoft, Esri, TomTom, Garmin, Safegraph, GeoTechnologies, Inc, HERE/NASA, USGS, EPA, NPS, US Census Bureau, USGA, USFWS



Boring and trenching around the intersection will be up to 10 FT deep.
Mast arm foundations will be 20 FT - 25 FT deep on all 4 corners

Lat 26.61448773
Lon -81.65434456

Lat 26.61449522
Lon -81.65410853

LEE BLVD &
HOMESTEAD RD

Lat 26.61418116
Lon -81.65440154

Lat 26.61417121
Lon -81.65398761



LEE BLVD & HOMESTEAD RD



Fillmore Ave

Lee Blvd

Connecticut Rd

Boring and trenching around the intersection will be up to 10 FT deep.
Mast arm foundations will be 20 FT - 25 FT deep on all NE, NW and SW corners

Lat 26.60307067
Lon -81.63915486

Lat 26.60309956
Lon -81.6388222

LEE BLVD & LEELAND HEIGHTS BLVD

Lat 26.60280999
Lon -81.63909849

Leeland Heights Blvd W

Leeland Heights Blvd W

Leeland Heights E

Connecticut Rd

Colorado Rd

Spur A Canal

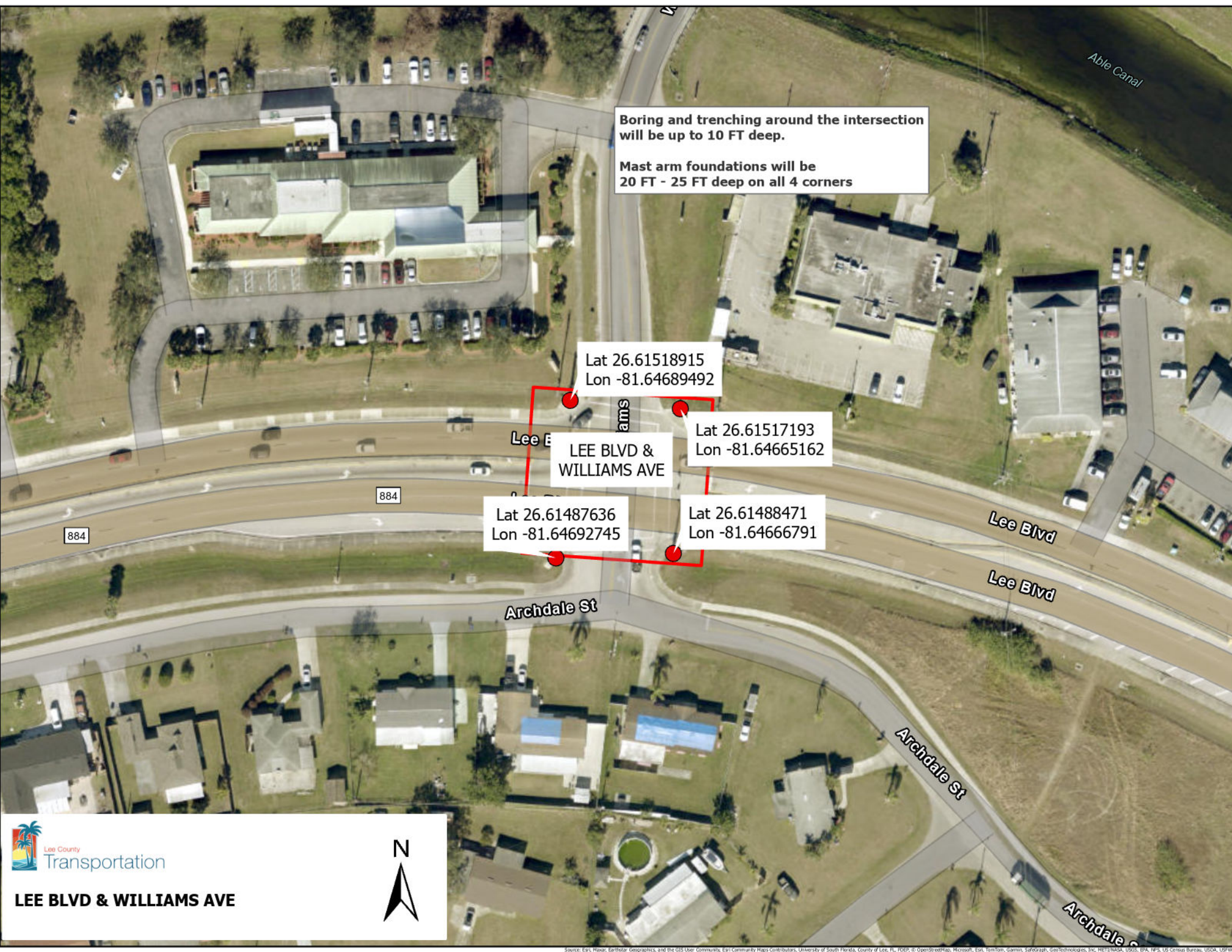
Leeland Heights Blvd W

Leeland Heights Blvd W



LEE BLVD & LEELAND HEIGHTS BLVD





Boring and trenching around the intersection will be up to 10 FT deep.
Mast arm foundations will be 20 FT - 25 FT deep on all 4 corners

Lat 26.61518915
Lon -81.64689492

Lat 26.61517193
Lon -81.64665162

LEE BLVD &
WILLIAMS AVE

Lat 26.61487636
Lon -81.64692745

Lat 26.61488471
Lon -81.64666791

884

884



LEE BLVD & WILLIAMS AVE



Boring and trenching around the intersection will be up to 10 FT deep.

Mast arm foundations will be 20 FT - 25 FT deep on all 4 corners

Lat 26.3317089
Lon -81.7386608

Lat 26.33170019
Lon -81.73820818

BONITA BEACH
RD & BONITA
GRANDE DR

Lat 26.33136975
Lon -81.73858639

Lat 26.331337
Lon -81.7381522

Lee County Transportation **Alternate Location**

BONITA BEACH RD & BONITA GRANDE DR



Source: Esri, Navar, Earthstar Geographics, and the GIS User Community; Esri Community Maps Contributors, University of South Florida, County of Lee, FL, POB, © OpenStreetMap, Microsoft, Esri, TomTom, Garmin, SafeGraph, GeoTechnologies, Inc, METI/NASA, USGS, EPA, NPS, US Census Bureau, USGA, USFWS

Gunnery Rd N
Gunnery

Boring and trenching around the intersection will be up to 10 FT deep.
Mast arm foundations will be 20 FT - 25 FT deep on all 4 corners

Lat 26.62433147
Lon -81.71559193

Lat 26.62429353
Lon -81.71530529

GUNNERY RD
& 12TH ST W

12th St W

Lat 26.62405791
Lon -81.71528844

Lat 26.62390047
Lon -81.71551188

Gunnery F
Gunnery F

Lee County Transportation **Alternate Location**

GUNNERY RD & 12TH ST W



Boring and trenching around the intersection will be up to 10 FT deep.
Mast arm foundations will be 20 FT - 25 FT deep on all 4 corners

Lat 26.60431863
Lon -81.78453827

Lat 26.60420746
Lon -81.78413887

TREELINE AVE
& PELICAN
PRESERVE BLVD

Lat 26.60401157
Lon -81.78468866

Lat 26.60381179
Lon -81.78427232

Lee County Transportation **Alternate Location**

TREELINE AVE & PELICAN PRESERVE BLVD

