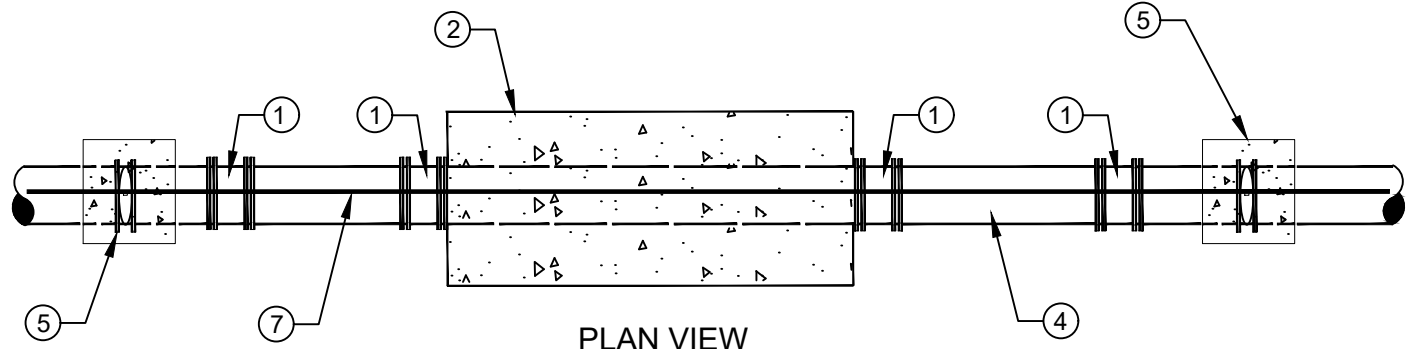



SECTION VIEW



PLAN VIEW

- ① 45° M.J. ELBOW RESTRAINED
- ② 2,500 MIN. P.S.I. CONCRETE PROTECTIVE PAD 4' WIDE MIN. X 4" THICK X OVERALL LENGTH OF PIPELINE CROSSING
- ③ 6" MIN. COMPACTED MATERIAL OR #57 STONE
- ④ USE PVC C-900 DR 14 MIN. FOR ALL SEWAGE FORCE MAINS. USE PRESSURE CLASS 350 DIP FOR ALL WATER MAINS
- ⑤ GATE VALVE OR PLUG VALVE INSTALL ATION PER LCU STANDARD DETAIL
- ⑥ AIR RELEASE VALVE (SEE APPROVED MATERIAL LIST)
- ⑦ 12 GAUGE DOUBLE INSUATED COPPER LOCATING WIRE (SEE LCU STANDARD DETAL)

NOT TO SCALE

	LEE COUNTY UTILITIES ENGINEERING <small>1500 MONROE STREET FORT MYERS, FLORIDA 33901</small>	
	TITLE: SUBAQUEOUS CROSSING	
<small>REVISION:</small> 4/3/24	<small>DETAIL NO:</small> G-09.dwg	